

LOT 26

CONCESSION 2

(OTTAWA FRONT)

(GLOUCESTER)

PART 1 PLAN SR - 481
pin 04263 - 0221

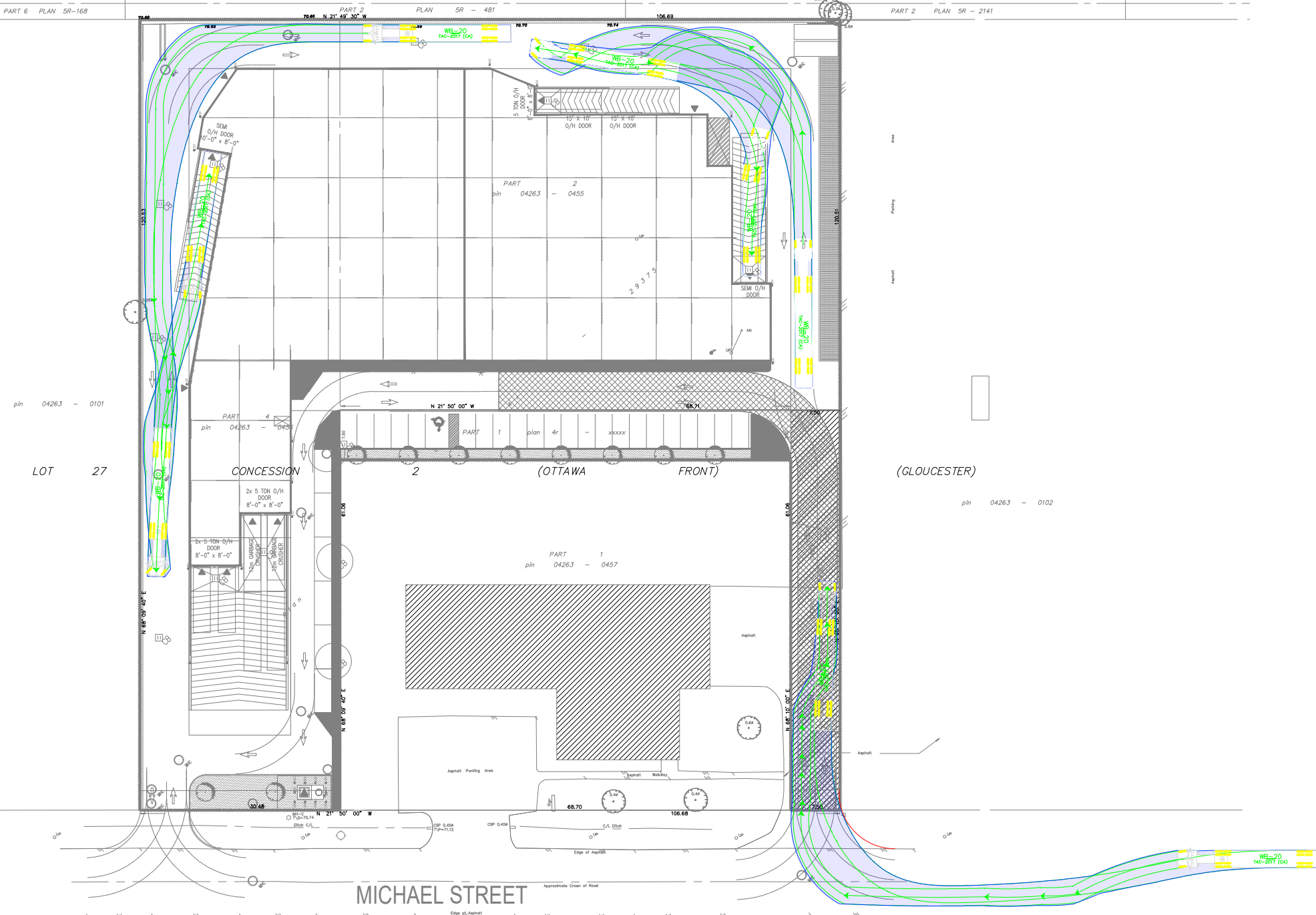
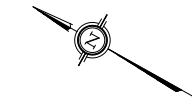
PART 1 PLAN SR - 2141
pin 04263 - 0222

PART 2
PLAN SR-168

PART 6 PLAN SR-168

PART 2 PLAN SR - 481

PART 2 PLAN SR - 2141



MICHAEL STREET

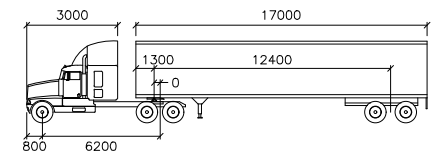
MICHAEL STREET (AS WIDENED BY BY-LAW 241-58, INST.Q.32524) (PLAN BA-2542)
pin 04263 - 0292



REFER TO ELECTRICAL SITE PLAN FOR LIGHTING, TRANSFORMER AND GENERATOR DETAILS
BOUNDARY INFORMATION FROM CAD SURVEY BY:
ANNIS, O'SULLIVAN, HOLLEBERG, LTD. - ONTARIO LAND SURVEYORS
COMPLETED ON JULY 6, 2022

Plan #18942 007-12-23-0017

Notes:



WB-20

| | | mm | |
|---------------|--------|--------------------|--------|
| Tractor Width | : 2600 | Lock to Lock Time | : 6.0 |
| Trailer Width | : 2600 | Steering Angle | : 28.2 |
| Tractor Track | : 2600 | Articulating Angle | : 70.0 |
| Trailer Track | : 2600 | | |

| | | | |
|---------|-------------------|-----|------------|
| 03 | Issued for Review | MS | 2023-12-12 |
| 02 | Issued for Review | AN | 2022-12-05 |
| 01 | Issued for Review | BB | 2023-12-12 |
| REV: | DESCRIPTION: | BY: | DATE: |
| STATUS: | | | |

CGH Transportation
6 Plaza Court
Ottawa, ON
K2H 7W1
(343) 999-9117

CLIENT: Roca Homes
424 George St W,
Ottawa, ON
K1S 3J2

ARCHITECT: Nicholas Caragianis Architect Inc.
137 Pamilla Street
Ottawa, ON
K1s 3K9

| | | | |
|--|---------------------|-----------------|----------------|
| SITE: 1591 Michael Street | | | |
| TITLE: Turning Movement Analysis WB-20 In-Bound Movements | | | |
| SCALE AT A3: NTS | DATE: 2023-12-12 | DRAWN: MS | CHECKED: MC |
| PROJECT NO: 2023-176 | DRAWING NO: 001 | REVISION: 03 | |

LOT 26

CONCESSION 2

(OTTAWA FRONT)

(GLOUCESTER)

PART 1 PLAN SR - 481
pin 04263 - 0221

PART 1 PLAN SR - 2141
pin 04263 - 0222

PART 6 PLAN SR-168

PART 2 PLAN SR - 481

PART 2 PLAN SR - 2141

pin 04263 - 0101

LOT 27

CONCESSION

(OTTAWA FRONT)

(GLOUCESTER)

2x 5 TON O/H DOOR
8'-0" x 8'-0"

PART 1
pin 04263 - 0457

pin 04263 - 0102

MICHAEL STREET

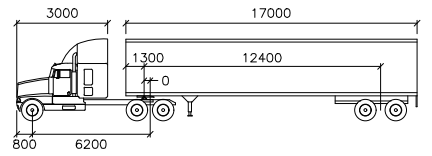
MICHAEL STREET (AS WIDENED BY BY-LAW 241-58, INST.GL32524) (PLAN BA-2542)
pin 04263 - 0292



REFER TO ELECTRICAL SITE PLAN FOR LIGHTING, TRANSFORMER AND GENERATOR DETAILS
BOUNDARY INFORMATION FROM CAD SURVEY BY: ANIS, O'SULLIVAN, VOLLEBEK LTD. - ONTARIO LAND SURVEYORS COMPLETED ON JULY 6, 2022

Plan #18942 007-12-23-0017

Notes:



WB-20

| | | mm | |
|---------------|--------|--------------------|--------|
| Tractor Width | : 2600 | Lock to Lock Time | : 6.0 |
| Trailer Width | : 2600 | Steering Angle | : 28.2 |
| Tractor Track | : 2600 | Articulating Angle | : 70.0 |
| Trailer Track | : 2600 | | |

| | | | |
|---------|-------------------|-----|------------|
| 03 | Issued for Review | MS | 2023-12-12 |
| 02 | Issued for Review | AN | 2022-12-05 |
| 01 | Issued for Review | BB | 2022-02-17 |
| REV: | DESCRIPTION: | BY: | DATE: |
| STATUS: | | | |

CGH Transportation
6 Plaza Court
Ottawa, ON
K2H 7W1
(343) 999-9117

CLIENT: Roca Homes
424 George St W,
Ottawa, ON
K1S 3J2

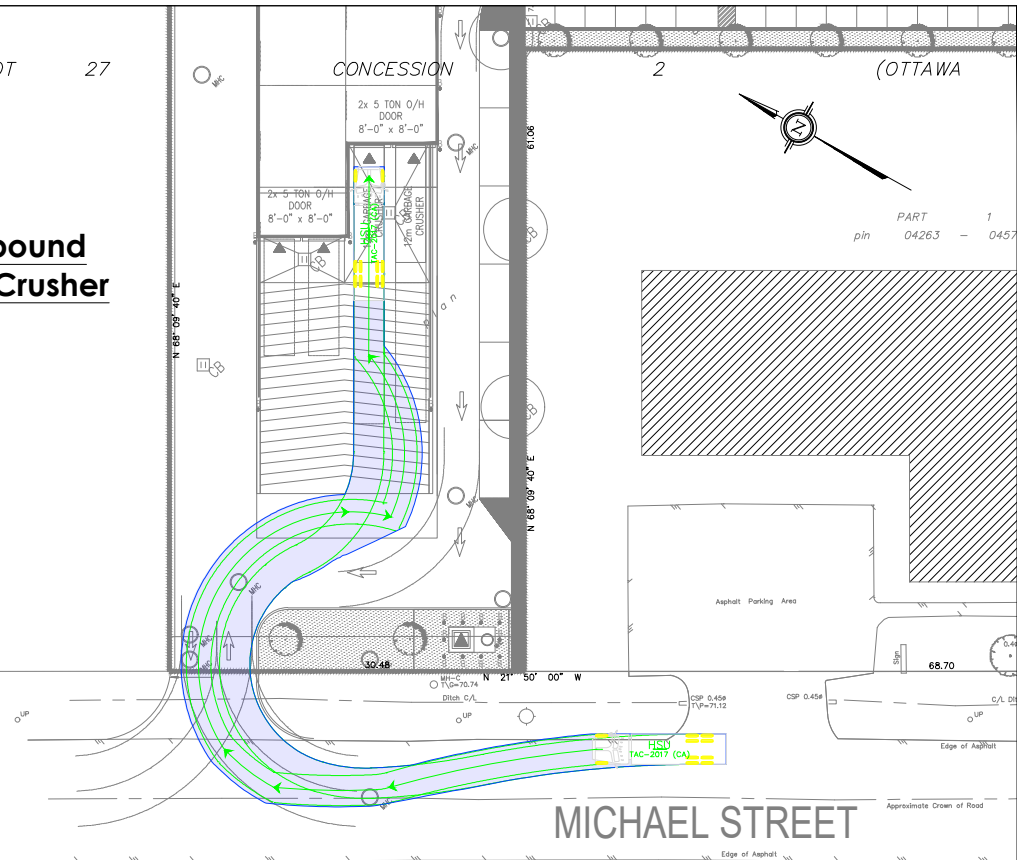
ARCHITECT: Nicholas Caragianis Architect Inc.
137 Pamilla Street
Ottawa, ON
K1s 3K9

SITE:
1591 Michael Street

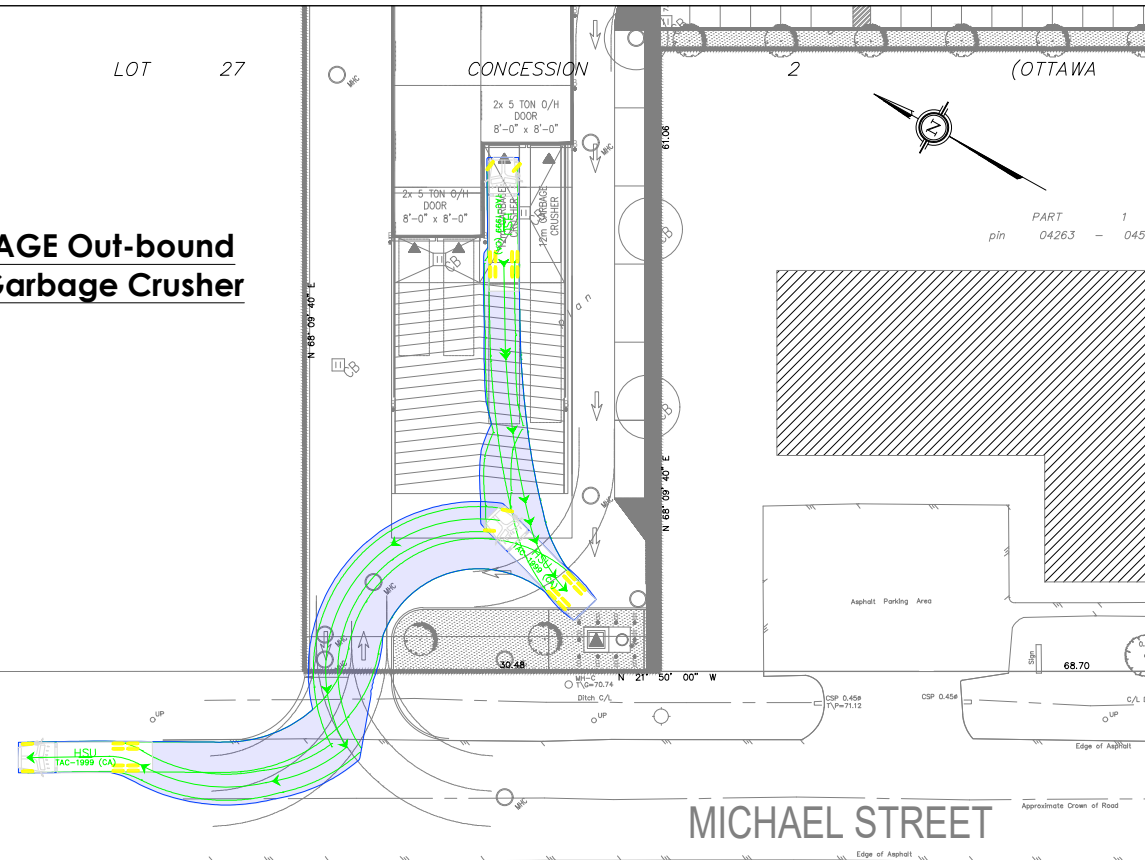
TITLE: Turning Movement Analysis
WB-20 Out-Bound Movements

| | | | |
|--------------|-------------|-----------|----------|
| SCALE AT A3: | DATE: | DRAWN: | CHECKED: |
| NTS | 2023-12-12 | MS | MC |
| PROJECT NO: | DRAWING NO: | REVISION: | |
| 2023-176 | 002 | 03 | |

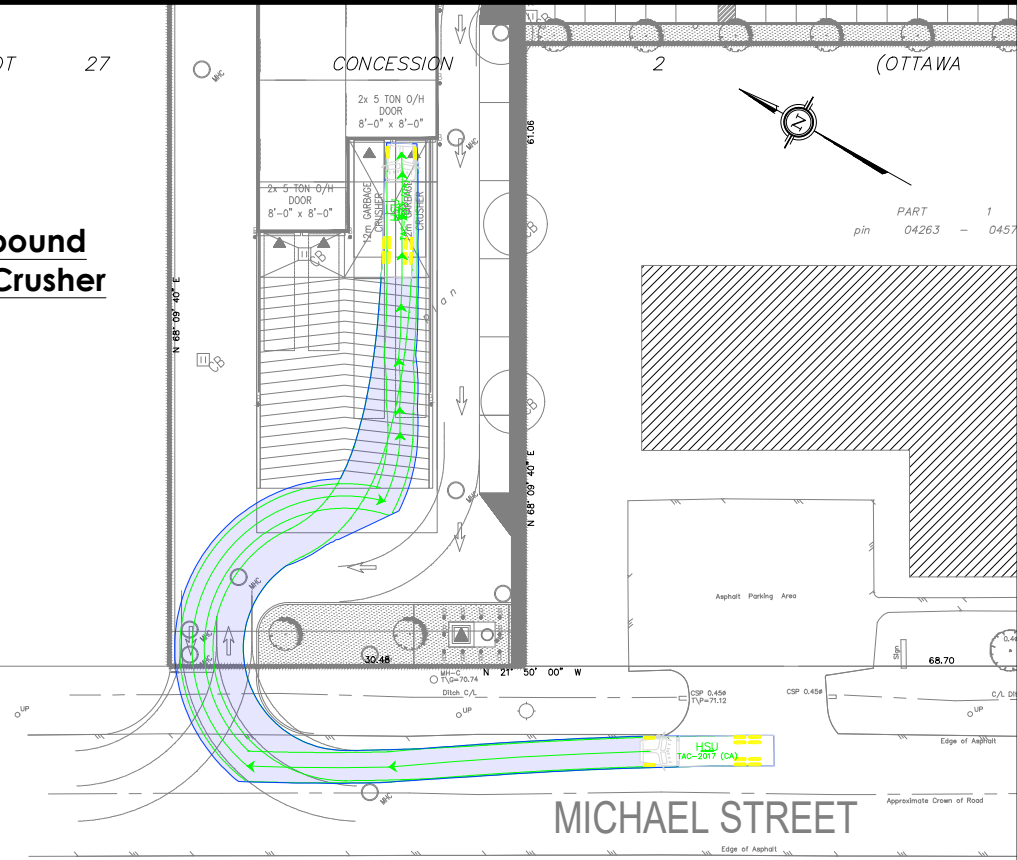
**GARBAGE In-bound
WEST Garbage Crusher**



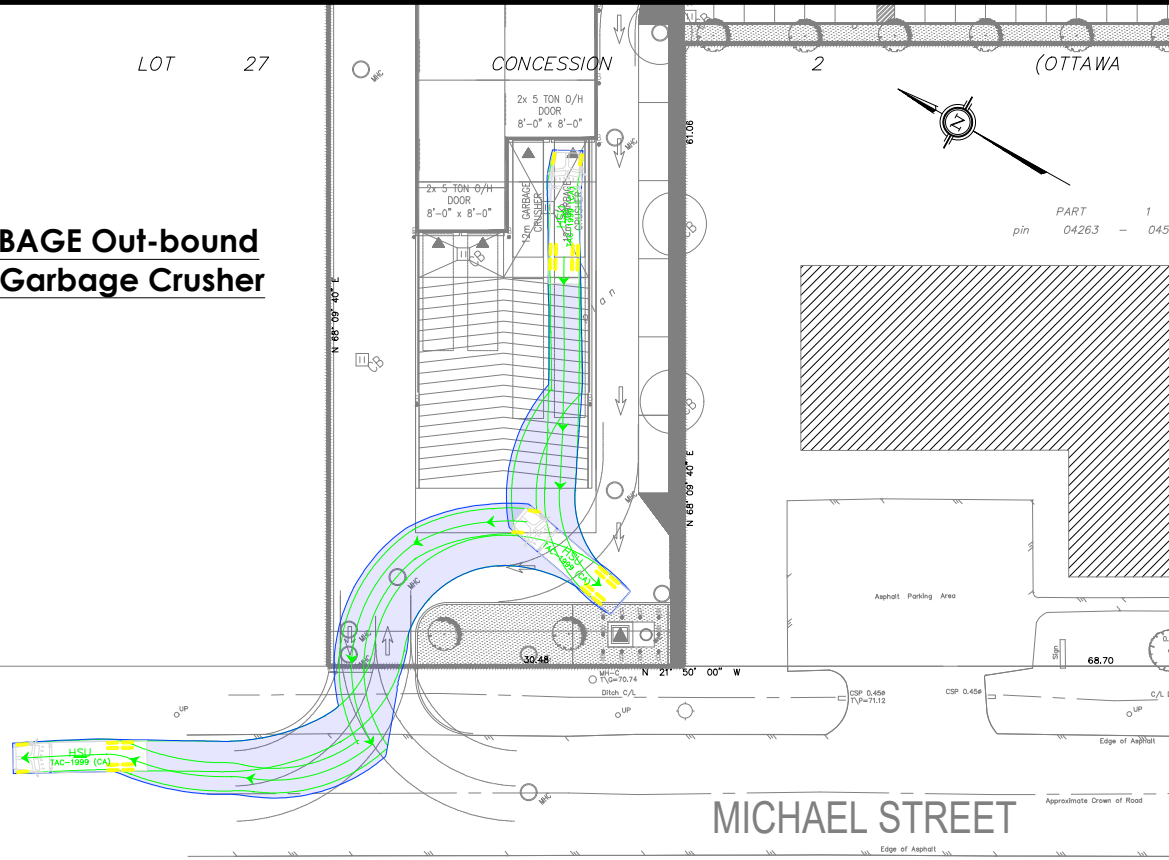
**GARBAGE Out-bound
WEST Garbage Crusher**



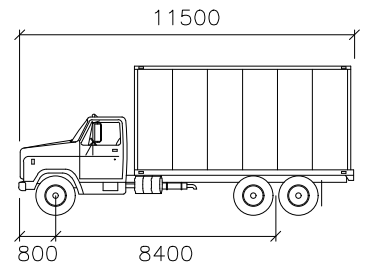
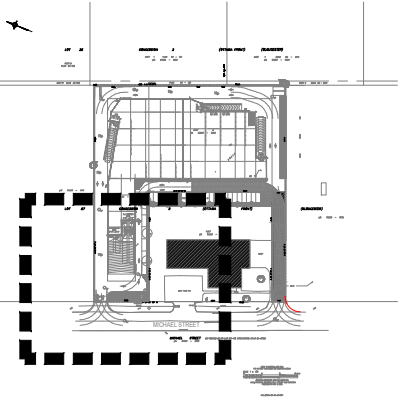
**GARBAGE In-bound
EAST Garbage Crusher**



**GARBAGE Out-bound
EAST Garbage Crusher**



Notes:



HSU

| | |
|-------------------|--------|
| | mm |
| Width | : 2600 |
| Track | : 2600 |
| Lock to Lock Time | : 6.0 |
| Steering Angle | : 40.0 |

| | | | |
|---------|-------------------|-----|------------|
| 03 | Issued for Review | MS | 2023-12-12 |
| 02 | Issued for Review | AN | 2022-12-05 |
| 01 | Issued for Review | BB | 2022-02-17 |
| REV: | DESCRIPTION: | BY: | DATE: |
| STATUS: | | | |

CGH Transportation
6 Plaza Court
Ottawa, ON
K2H 7W1
(343) 999-9117

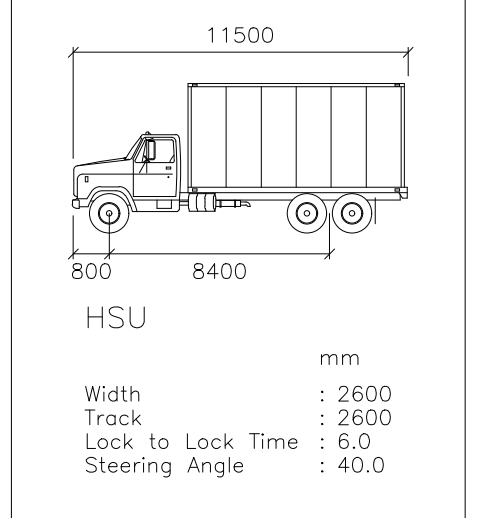
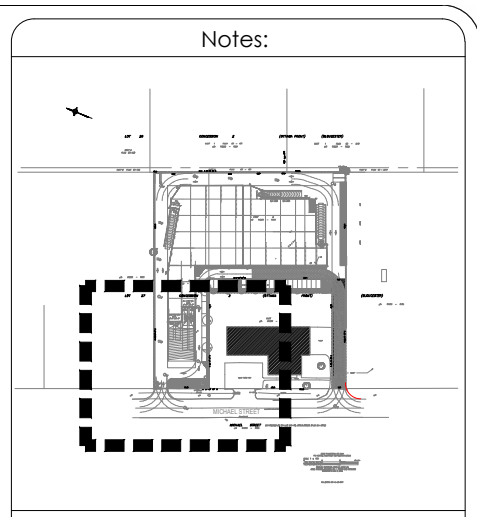
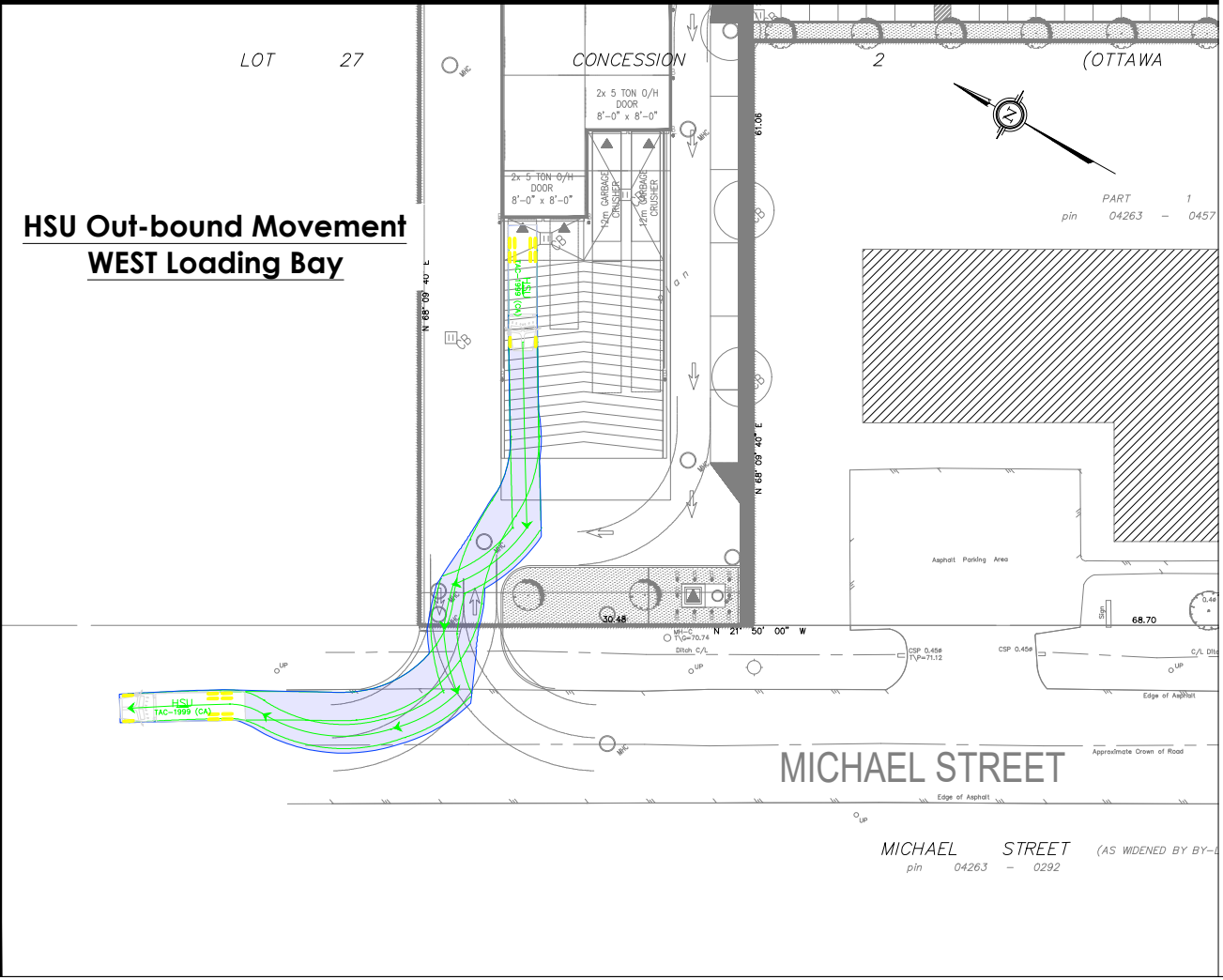
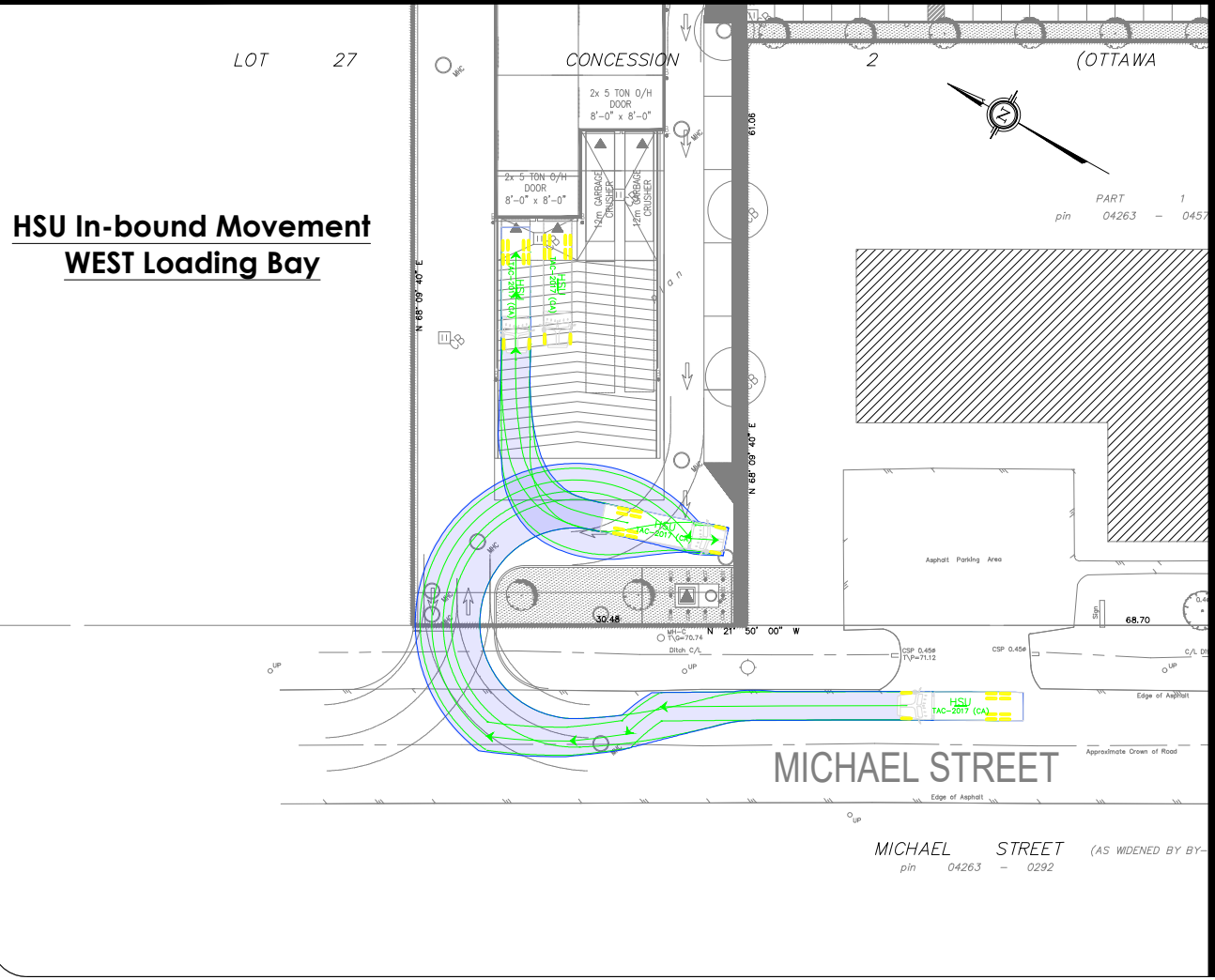
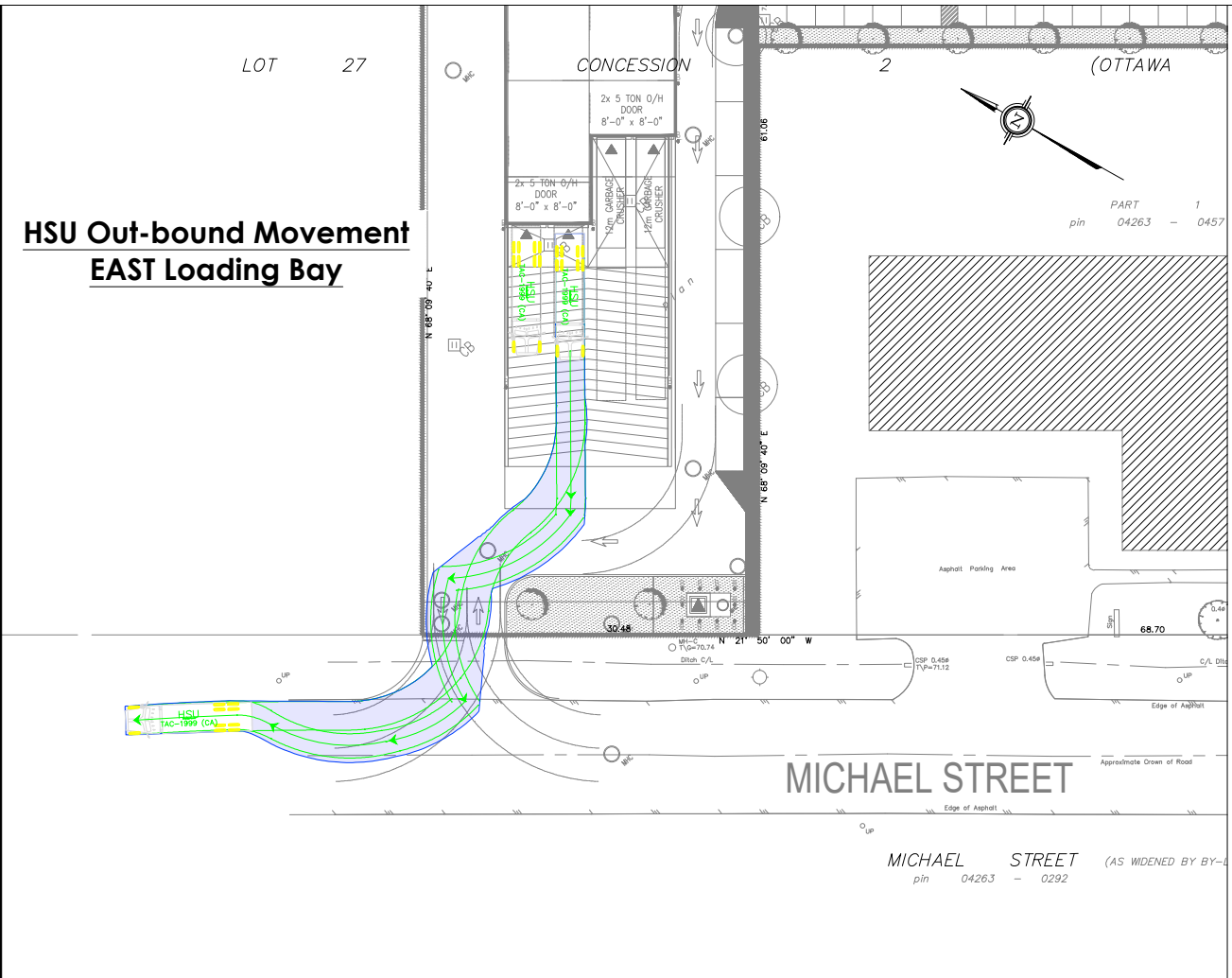
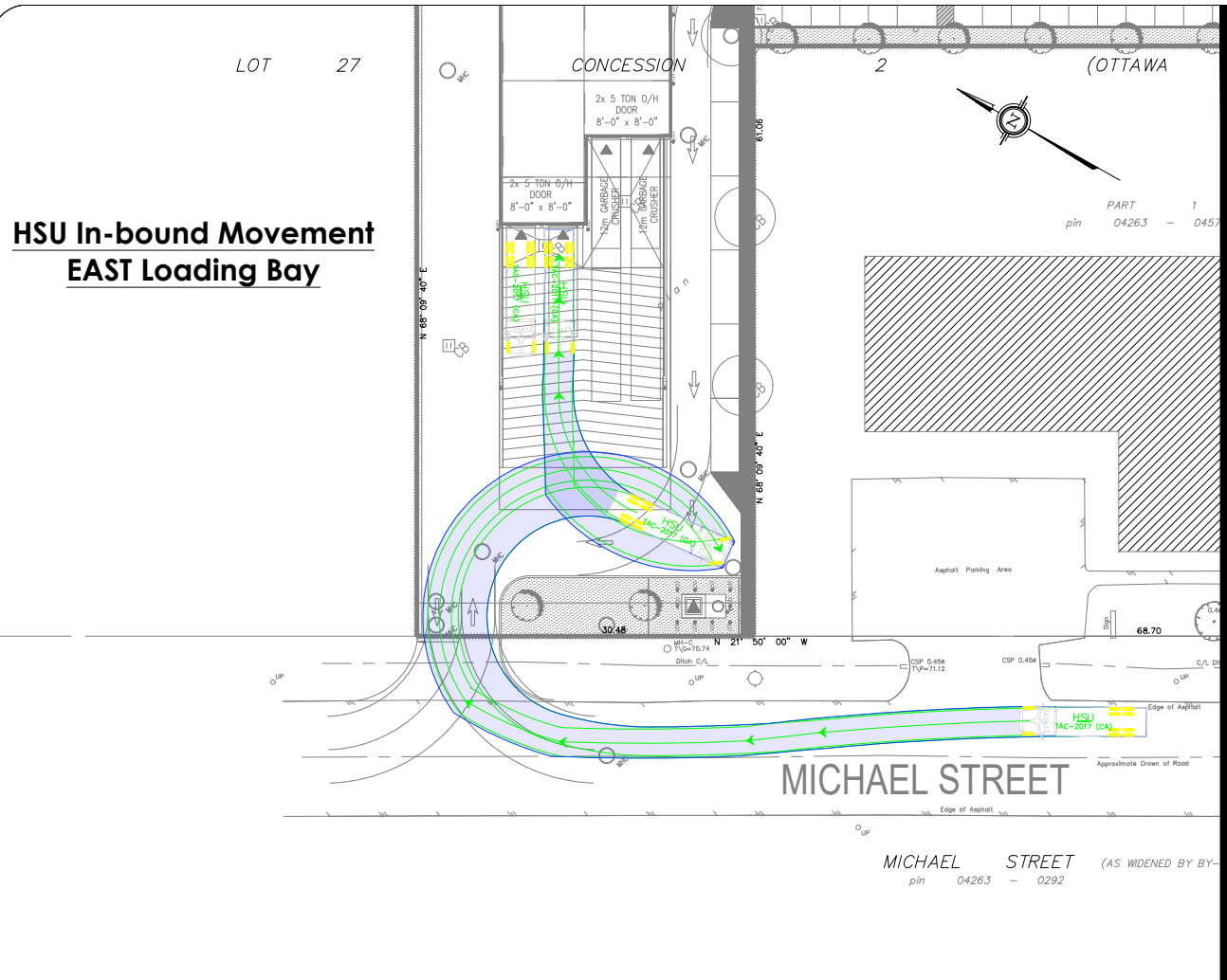
CLIENT: Roca Homes
424 George St W,
Ottawa, ON
K1S 3J2

ARCHITECT: Nicholas Caragianis Architect Inc.
137 Pamilla Street
Ottawa, ON
K1S 3K9

SITE:
1591 Michael Street

TITLE:
**Turning Movement Analysis
GARBAGE Turning Movements**

| | | | |
|-------------------------|---------------------|-----------------|----------------|
| SCALE AT A3: NTS | DATE: 2023-12-12 | DRAWN: MS | CHECKED: MC |
| PROJECT NO: 2023-176 | DRAWING NO: 003 | REVISION: 03 | |



| | | | |
|---------|-------------------|-----|------------|
| 03 | Issued for Review | MS | 2023-12-12 |
| 02 | Issued for Review | AN | 2022-12-05 |
| 01 | Issued for Review | BB | 2022-02-17 |
| REV: | DESCRIPTION: | BY: | DATE: |
| STATUS: | | | |

CGH Transportation
6 Plaza Court
Ottawa, ON
K2H 7W1
(343) 999-9117

CLIENT: Roca Homes
424 George St W,
Ottawa, ON
K1S 3J2

ARCHITECT: Nicholas Caragianis Architect Inc.
137 Pamilla Street
Ottawa, ON
K1S 3K9

SITE: 1591 Michael Street

TITLE: Turning Movement Analysis
HSU Turning Movements (1)

| | | | |
|--------------|-------------|-----------|----------|
| SCALE AT A3: | DATE: | DRAWN: | CHECKED: |
| NTS | 2023-12-12 | MS | MC |
| PROJECT NO: | DRAWING NO: | REVISION: | |
| 2023-176 | 004 | 03 | |

PART 2
PLAN 5R-168

pin 04263 - 0221

pin 04263 - 0222

PART 6 PLAN 5R-168

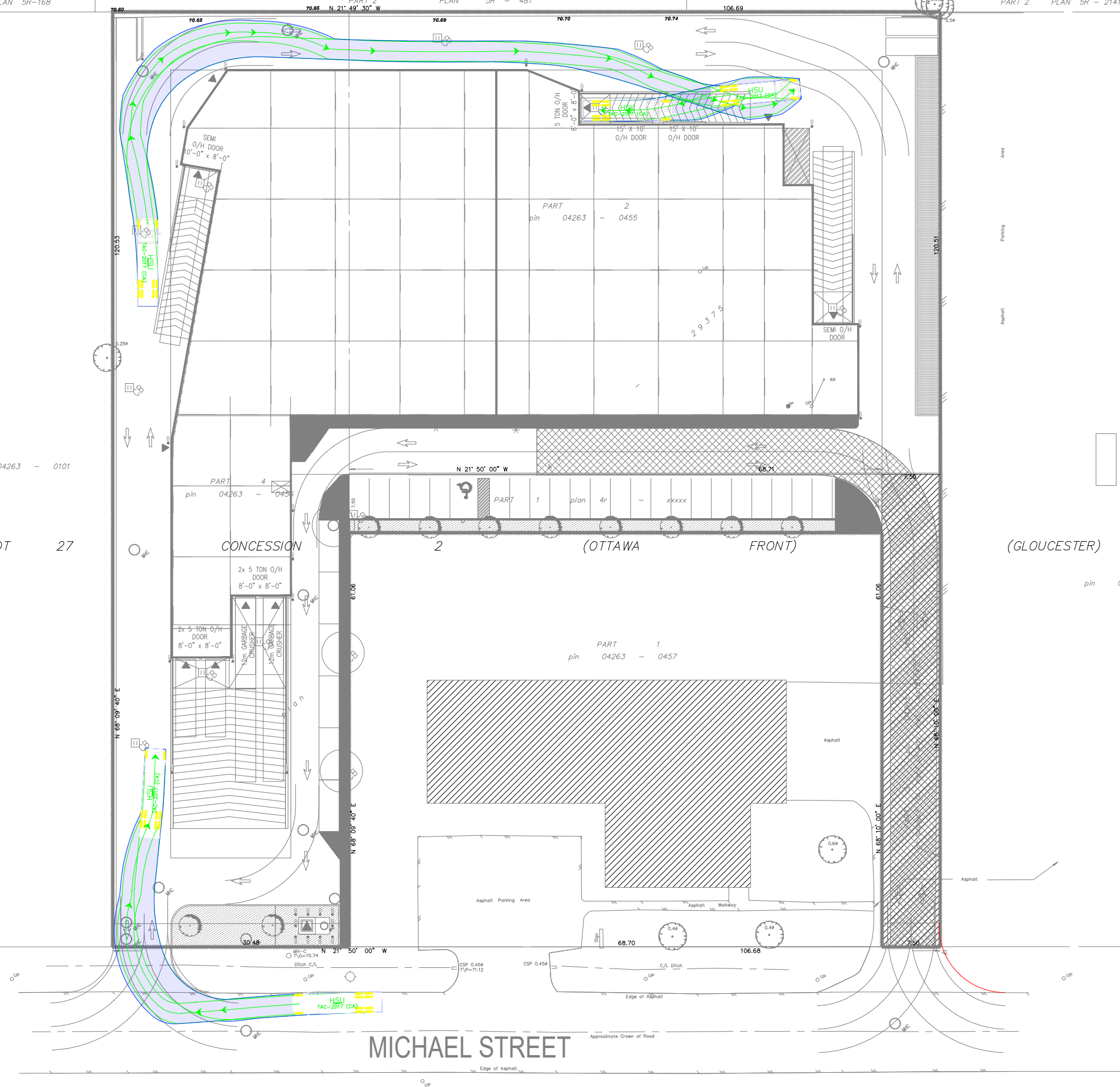
PART 2 PLAN 5R - 481

PART 2 PLAN 5R - 2141

pin 04263 - 0101

LOT 27

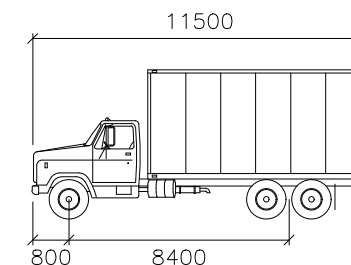
pin 04263 - 0102



MICHAEL STREET

MICHAEL STREET (AS WIDENED BY BY-LAW 241-58, INST.GL32524) (PLAN BA-2542)
pin 04263 - 0292

Notes:



HSU
mm
Width : 2600
Track : 2600
Lock to Lock Time : 6.0
Steering Angle : 40.0

| | | | |
|---------|-------------------|-----|------------|
| 03 | Issued for Review | MS | 2023-12-12 |
| 02 | Issued for Review | AN | 2022-12-05 |
| 01 | Issued for Review | BB | 2022-02-17 |
| REV: | DESCRIPTION: | BY: | DATE: |
| STATUS: | | | |

CGH Transportation
6 Plaza Court
Ottawa, ON
K2H 7W1
(343) 999-9117

CLIENT: Roca Homes
424 George St W,
Ottawa, ON
K1S 3J2

ARCHITECT: Nicholas Caragianis Architect Inc.
137 Pamilla Street
Ottawa, ON
K1S 3K9

SITE: 1591 Michael Street

TITLE: Turning Movement Analysis
HSU Turning Movements (2)

| | | | |
|--------------|-------------|-----------|----------|
| SCALE AT A3: | DATE: | DRAWN: | CHECKED: |
| NTS | 2023-12-12 | MS | MC |
| PROJECT NO: | DRAWING NO: | REVISION: | |
| 2023-176 | 005 | 03 | |

PART 2
PLAN 5R-168

pin 04263 - 0221

pin 04263 - 0222

PART 6 PLAN 5R-168

PART 2 PLAN 5R - 481

PART 2 PLAN 5R - 2141

pin 04263 - 0101

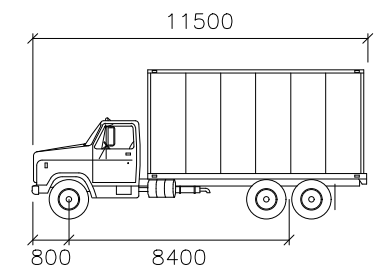
LOT 27

pin 04263 - 0102

MICHAEL STREET

MICHAEL STREET (AS WIDENED BY BY-LAW 241-58, INST.GL32524) (PLAN BA-2542)
pin 04263 - 0292

Notes:



HSU
mm
Width : 2600
Track : 2600
Lock to Lock Time : 6.0
Steering Angle : 40.0

| | | | |
|---------|-------------------|-----|------------|
| 03 | Issued for Review | MS | 2023-12-12 |
| 02 | Issued for Review | AN | 2022-12-05 |
| 01 | Issued for Review | BB | 2022-02-17 |
| REV: | DESCRIPTION: | BY: | DATE: |
| STATUS: | | | |

CGH Transportation
6 Plaza Court
Ottawa, ON
K2H 7W1
(343) 999-9117

CLIENT: Roca Homes
424 George St W,
Ottawa, ON
K1S 3J2

ARCHITECT: Nicholas Caragianis Architect Inc.
137 Pamilla Street
Ottawa, ON
K1S 3K9

SITE: 1591 Michael Street

TITLE: Turning Movement Analysis
HSU Turning Movements (3)

| | | | |
|--------------|-------------|-----------|----------|
| SCALE AT A3: | DATE: | DRAWN: | CHECKED: |
| NTS | 2023-12-12 | MS | MC |
| PROJECT NO: | DRAWING NO: | REVISION: | |
| 2023-176 | 006 | 03 | |

