

**LEGEND**

- PROPOSED BARRIER CURB
- PROPOSED DEPRESSED CURB
- DRAINAGE AREA LIMITS
- POST-DEVELOPMENT AREA ID
- POST-DEVELOPMENT DRAINAGE AREA (ha)
- 1.5 YEAR WEIGHTED RUNOFF COEFFICIENT
- EXISTING CONCRETE CURB
- EXISTING VALVE & VALVE BOX
- EXISTING SERVICE POST
- EXISTING HYDRANT
- EXISTING CATCHBASIN
- EXISTING CATCHBASIN MH
- EXISTING UTILITY POLE / GUY WIRES

**GENERAL NOTES:**

1. COORDINATE AND SCHEDULE ALL WORK WITH OTHER TRADES AND CONTRACTORS.
2. DETERMINE THE EXACT LOCATION, SIZE, MATERIAL AND ELEVATION OF ALL EXISTING UTILITIES PRIOR TO COMMENCING CONSTRUCTION. PROTECT AND ASSUME RESPONSIBILITY FOR ALL EXISTING UTILITIES WHETHER OR NOT SHOWN ON THIS DRAWING.
3. OBTAIN ALL NECESSARY PERMITS AND APPROVALS FROM THE CITY OF OTTAWA BEFORE COMMENCING CONSTRUCTION.
4. BEFORE COMMENCING CONSTRUCTION OBTAIN AND PROVIDE PROOF OF COMPREHENSIVE, ALL RISK AND OPERATIONAL LIABILITY INSURANCE FOR \$5,000,000.00, INSURANCE POLICY TO NAME OWNERS, ENGINEERS AND ARCHITECTS AS CO-INSURED.
5. COMPLETE ALL WORKS IN ACCORDANCE WITH THE MOST CURRENT CITY OF OTTAWA STANDARDS AND SPECIFICATIONS USING THE CURRENT GUIDELINES, BYLAWS AND STANDARDS INCLUDING MATERIALS OF CONSTRUCTION, DISINFECTION AND ALL RELEVANT REFERENCES TO OPSS, OPSD & AWWA GUIDELINES - ALL CURRENT VERSIONS AND 'AS AMENDED'.
6. RESTORE ALL DISTURBED AREAS ON-SITE AND OFF-SITE, INCLUDING TRENCHES AND SURFACES ON PUBLIC ROAD ALLOWANCES TO EXISTING CONDITIONS OR BETTER TO THE SATISFACTION OF THE CITY OF OTTAWA AND ENGINEER.
7. REMOVE FROM SITE ALL EXCESS EXCAVATED MATERIAL, ORGANIC MATERIAL AND DEBRIS UNLESS OTHERWISE INSTRUCTED BY ENGINEER. EXCAVATE AND REMOVE FROM SITE ANY CONTAMINATED MATERIAL. ALL CONTAMINATED MATERIAL SHALL BE DISPOSED OF AT A LICENSED LANDFILL FACILITY.
8. ALL ELEVATIONS ARE GEODETIC.
9. REFER TO GEOTECHNICAL INVESTIGATION REPORT (PG5829-1, DATED JUNE 7, 2021), PREPARED BY PATERSON GROUP INC., FOR SUBSURFACE CONDITIONS, CONSTRUCTION RECOMMENDATIONS, AND GEOTECHNICAL INSPECTION REQUIREMENTS. THE GEOTECHNICAL CONSULTANT IS TO REVIEW ON-SITE CONDITIONS AFTER EXCAVATION PRIOR TO PLACEMENT OF THE GRANULAR MATERIAL.
10. REFER TO ARCHITECT'S AND LANDSCAPE ARCHITECT'S DRAWINGS FOR BUILDING AND HARD SURFACE AREAS AND DIMENSIONS.
11. REFER TO THE DEVELOPMENT SERVICING STUDY & STORMWATER MANAGEMENT REPORT (R-2023-003) PREPARED BY NOVATECH.
12. SAW CUT AND KEY GRIND ASPHALT AT ALL ROAD CUTS AND ASPHALT TIE IN POINTS AS PER CITY OF OTTAWA STANDARDS (R10).
13. PROVIDE LINE / PARKING PAINTING AS REQUIRED PER THE ARCHITECTURAL SITE PLAN.

**BENCHMARK NOTES:**

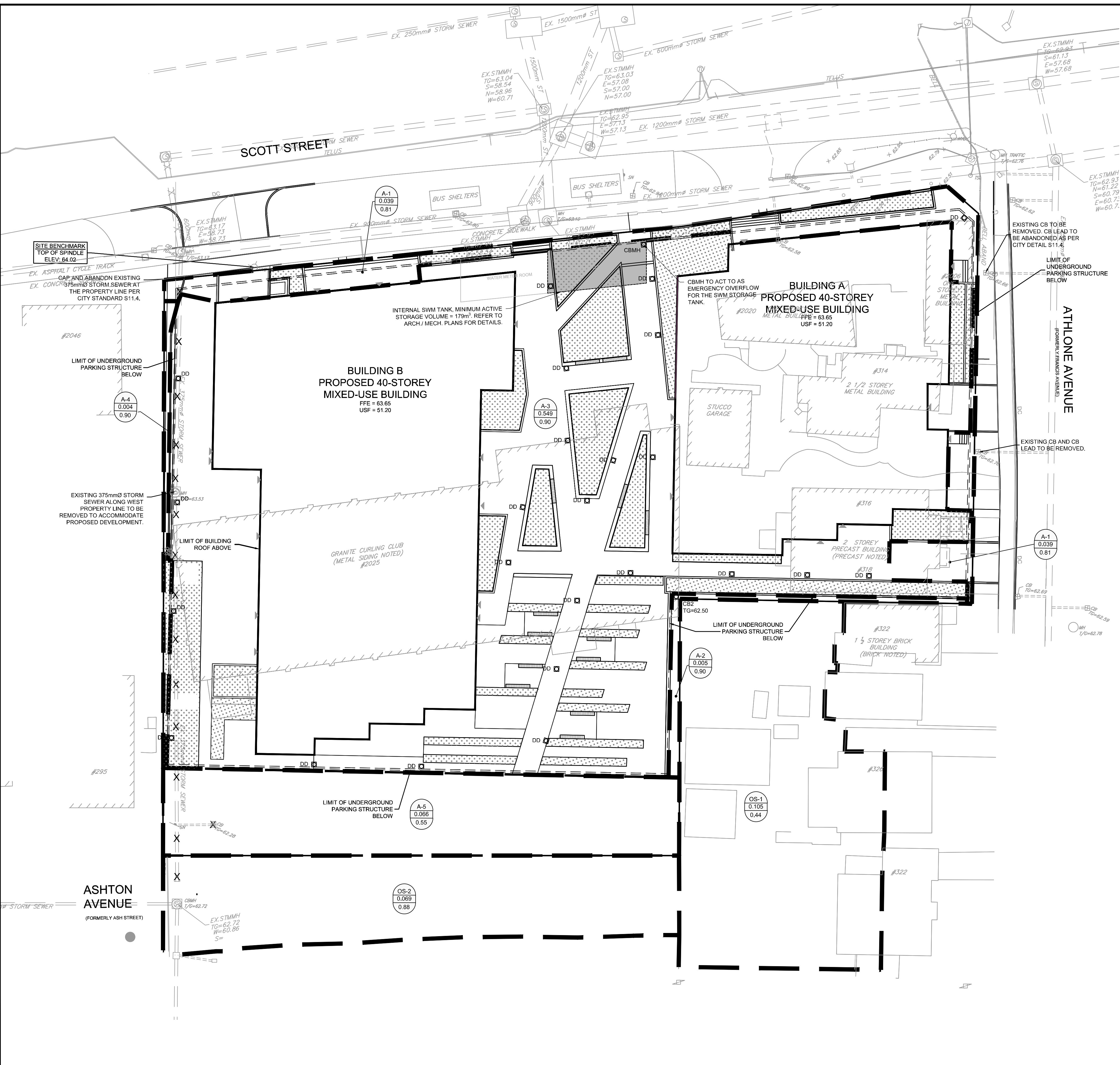
1. ELEVATIONS SHOWN ARE GEODETIC AND ARE REFERRED TO THE CGVD28 GEODETIC DATUM. DERIVED ARE DERIVED FROM A SITE BENCHMARK AS SHOWN ON PG 68 HAVING AN ELEVATION OF 64.02.
2. IT IS THE RESPONSIBILITY OF THE USER OF THIS INFORMATION TO VERIFY THAT THE JOB BENCHMARK HAS NOT BEEN ALTERED OR DISTURBED AND THAT ITS RELATIVE ELEVATION AND DESCRIPTION AGREES WITH THE INFORMATION SHOWN ON THIS DRAWING.
3. BENCHMARK WAS PROVIDED ON PLAN OF SURVEY OF PART OF LOT 60 AND ALL OF LOTS 61 & 62, REGISTERED PLAN 263 AND PART OF LOT 31, CONVESSION 1 (OTTAWA FRONT), SURVEYED BY STANTEC GEOMATICS LTD.
4. NEW BENCHMARK TO BE ESTABLISHED BY SURVEYOR PRIOR TO CONSTRUCTION TO REPLACE EXISTING BENCHMARK ON FIRE HYDRANT THAT WILL BE RELOCATED.

**INTERNAL SWM STORAGE SYSTEM**

DESIGN EVENT	STORAGE SYSTEM CONTROLLED FLOW	STORAGE VOLUMES	
		REQUIRED	PROVIDED
1.2 YR		40.7 m <sup>3</sup>	
1.5 YR	PUMPED FLOW	67.7 m <sup>3</sup>	>179 m <sup>3</sup>
1:100 YR	RATE = 31.5 L/s	178.6 m <sup>3</sup>	

**NOTES:**

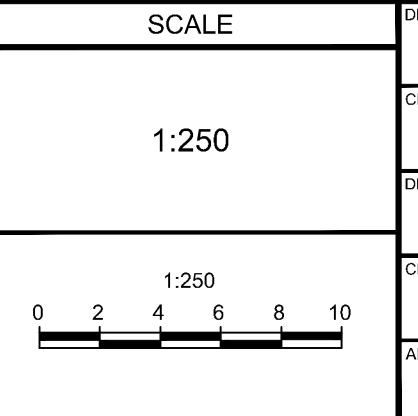
1. ALL DRAINAGE FROM AREA A-3 (PROPOSED AMENITY AREA DECK DRAINS AND ALL ROOF DRAINS) TO BE DIRECTED TO THE INTERNAL STORMWATER STORAGE SYSTEM. REFER TO ARCHITECTURAL AND MECHANICAL PLANS FOR DETAILS.
2. REFER TO ARCHITECTURAL AND STRUCTURAL PLANS FOR EXACT SIZE AND DETAILS OF INTERNAL STORMWATER STORAGE SYSTEM.
3. REFER TO ARCHITECTURAL AND MECHANICAL PLANS FOR LOCATION AND CONNECTIONS AND DETAILS OF THE INTERNAL STORMWATER STORAGE SYSTEM AND EMERGENCY OVERFLOW PIPING.



**NOTE:**  
THE POSITION OF ALL POLE LINES, CONDUITS, WATERMANS, SEWERS AND OTHER UNDERGROUND AND OVERGROUND UTILITIES AND STRUCTURES IS NOT NECESSARILY SHOWN ON THE CONTRACT DRAWINGS, AND WHERE SHOWN, THE ACCURACY OF THE POSITION OF SUCH UTILITIES AND STRUCTURES IS NOT GUARANTEED. BEFORE STARTING WORK, DETERMINE THE EXACT LOCATION OF ALL SUCH UTILITIES AND STRUCTURES AND ASSUME ALL LIABILITY FOR DAMAGE TO THEM.

**OWNER INFORMATION**  
HOPPNER HOLDINGS INC.  
1818 BRADLEY SIDE ROAD,  
CARP, ONTARIO K0A 1L0  
KEN HOPPNER  
PHONE: 613-831-5490  
khoppner@morleyhoppner.com

No.	REVISION	DATE	BY
1.	ISSUED FOR SPC APPLICATION	FEB 22/23	FST



**FOR REVIEW ONLY**

DESIGN	CV
CHECKED	FST
DRAWN	CV
CHECKED	FST
APPROVED	FST

**NOVATECH**  
Engineers, Planners & Landscape Architects  
Suite 200, 240 Michael Cowpland Drive  
Ottawa, Ontario, Canada K2M 1P6

Telephone (613) 254-9643  
Facsimile (613) 254-9867  
Website www.novatech-eng.com

**CITY OF OTTAWA**  
2026 SCOTT STREET

**DRAWING NAME**  
POST-DEVELOPMENT STORM DRAINAGE AREA PLAN

PROJECT No. 121302  
REV # 1  
DRAWING No. 121302-SWM2

M:\2023\121302\CD\121302-SWM.dwg, SWM2, Feb 22, 2023, 4:53pm, cadwin