

# 2026 SCOTT STREET

## DESIGN BRIEF

ISSUED FOR SITE PLAN CONTROL

23.03.27

### REZONING

A Zoning By-Law Amendment Application was submitted on April 25, 2022 for the properties, 2006, 2020 & 2026 Scott Street, and 314 & 318 Athlone Avenue.

Previously, properties 2006, 2020 Scott Street, and 314 Athlone Avenue were zoned Traditional Mainstreet, Exception 102 - TM[102], while 2026 Scott Street was zoned as Community Leisure Facility Zone - L1, and 318 Athlone Avenue was zoned R4 UB.

The subject sites, 2006, 2020 & 2026 Scott Street, and 314 & 318 Athlone Avenue were approved to be rezoned to TM[2829] S465-h during a Planning Committee Meeting on October 27, 2022. Please see section "Updates Since ZBA Approval" (Page 18) for more information regarding the changes made to the proposed design since October 27, 2022.

### CONTEXT

2026 Scott Street is located in Ottawa's Westboro community. The site's close proximity to a future LRT transit station will result in the future development becoming an active residential and commercial node within the city (Figure 2.0).

The site, situated between residential neighbourhoods, Richmond Avenue's arterial shopping, and a transit corridor to the North allows for a variation of uses and demographics to reside, visit, and utilize the proposed development. This valued location sits in close proximity to nature via walking and cycling trails along the Ottawa River (Figure 1.0). Simultaneously, 2026 Scott Street's adjacent infrastructure provide urban living essentials.



Figure 1.0 - City of Ottawa site context map.





Figure 2.0 - Westboro neighbourhood site context aerial image.

The Westboro neighbourhood consists of a hybrid of small scale homes, and multi-unit residential dwellings of various scales. The urban fabric of the neighbourhood therefore varies from brick clad two storey homes to metal panelized towers. This range in typology therefore results in an ever-evolving neighbourhood, where density, demographics, and the experience of space create a vibrant atmosphere.



Figure 3.0 - Existing Granite Curling Club, 2026 Scott Street.



Figure 4.0 - Existing Granite Curling Club, 2026 Scott Street.



Figure 5.0 & 6.0 - Current use, Granite Curling Club.



The property is currently divided into five parcels, occupied by the Granite Curling Club, a few commercial businesses, and surface parking (Figures 3.0-6.0). The North edge of the site meets the public along one of Ottawa's busiest thoroughfares (Figure 7.0-9.0). Towards the West, the site is met by Athlone Avenue, a residential street (Figure 10.0). Along the South edge, a large park services the community. This park, historically and currently, acts as bridge between community oriented infrastructures such as a Gymnastic Club, and Curling Club, flanking its South and North edges. Therefore, the redevelopment of this site seeks to maintain this community space, while further enhancing the experience of the site, it's contextual fabric, and the connections it will provide to the future LRT transit station.



Figure 7.0 - Existing Site Conditions, View East along Scott Street.



Figure 8.0 - Existing Site Conditions, View West along Scott Street.





Figure 9.0 - Existing Site Conditions, View West along Scott Street.



Figure 10.0 - Existing Site Conditions, View South along Athlone Avenue.









Figure 12.0 - View of proposed towers from the North side of Scott Street.

### **Built Form and Urban Fabric**

The proposed buildings are strategically situated on the site to provide greater relief from the abutting neighbourhood, allow direct access to Lion's Park from the future LRT station, and create multiple wide pedestrian thoroughfares from all corners of the site. The two proposed buildings are situated along the Scott Street axis, maintaining the street edge (Figure 12.0). The building's tower forms are situated closer to Scott Street as a means of creating a further stepback from the low-rise neighbourhood to the South. The two buildings, separated by approximately 24.2 meters at grade, creates a wide North-South pedestrian thoroughfare. This landscaped plaza draws people into the site, funneling users along a series of retail/commercial units, and eventually to the existing and expansive Lion's park. This public plaza, widening at the South end of the site prior to reaching the park, further unifies the relationship between Lion's park and the existing site. The site is also accessed along Athlone Avenue, where a pedestrian thoroughfare connects the site from East to West. This circulation axis widens at the central node of the site and jogs to meet Lion's Park. Additionally, the site has a service access point at the West edge of the property boundary along Scott Street. The site has a perimeter consisting of landscaping and sidewalk, further connecting the two proposed buildings to the existing urban fabric.

### **The Base/Podium**

The proposed towers, each comprised of 40 storeys, encompass six storey podiums (Figure 13.0). The buildings are connected by a four storey link, intended to be utilized for amenity space. The various uses at grade activate the ground plane. Commercial/retail units, primarily glazed, line the interior plaza space, while amenity uses create lively façades along Scott Street. The South façade of the West building encompasses residential units with individual terraces fronting Lion's Park. Bicycle storage and a pet wash station are also located at grade for ease of access and additional pedestrian and cyclist traffic flow, encouraging interactions at grade. Each building's "back-of-house" services, such as move-in rooms and waste and recycling removal facilities will be accessed via a Scott Street vehicular entrance point, and along Athlone Avenue. Opaque materiality and architectural screens where these services are located aids in the distinction between user's lively amenity spaces and service areas.



The porosity of the buildings, and the site as a whole, is further emphasized as the buildings relate to each other at grade. Access to commercial/retail and amenity spaces within the interior plaza space opposing each other intend on creating a lively duality. This interior plaza space aims to become an interactive space for residents of each building and the greater public. The building materiality also emphasizes this notion of duality as the buildings reflect each other as sisters but are not viewed as identical twins. Landscape features paralleling the architectural intent of this space result in a vivid and lush common gathering space (Figure 14.0).



Figure 13.0 - View of podium looking West along Scott Street.



Figure 14.0 - View of entrances along Scott Street.



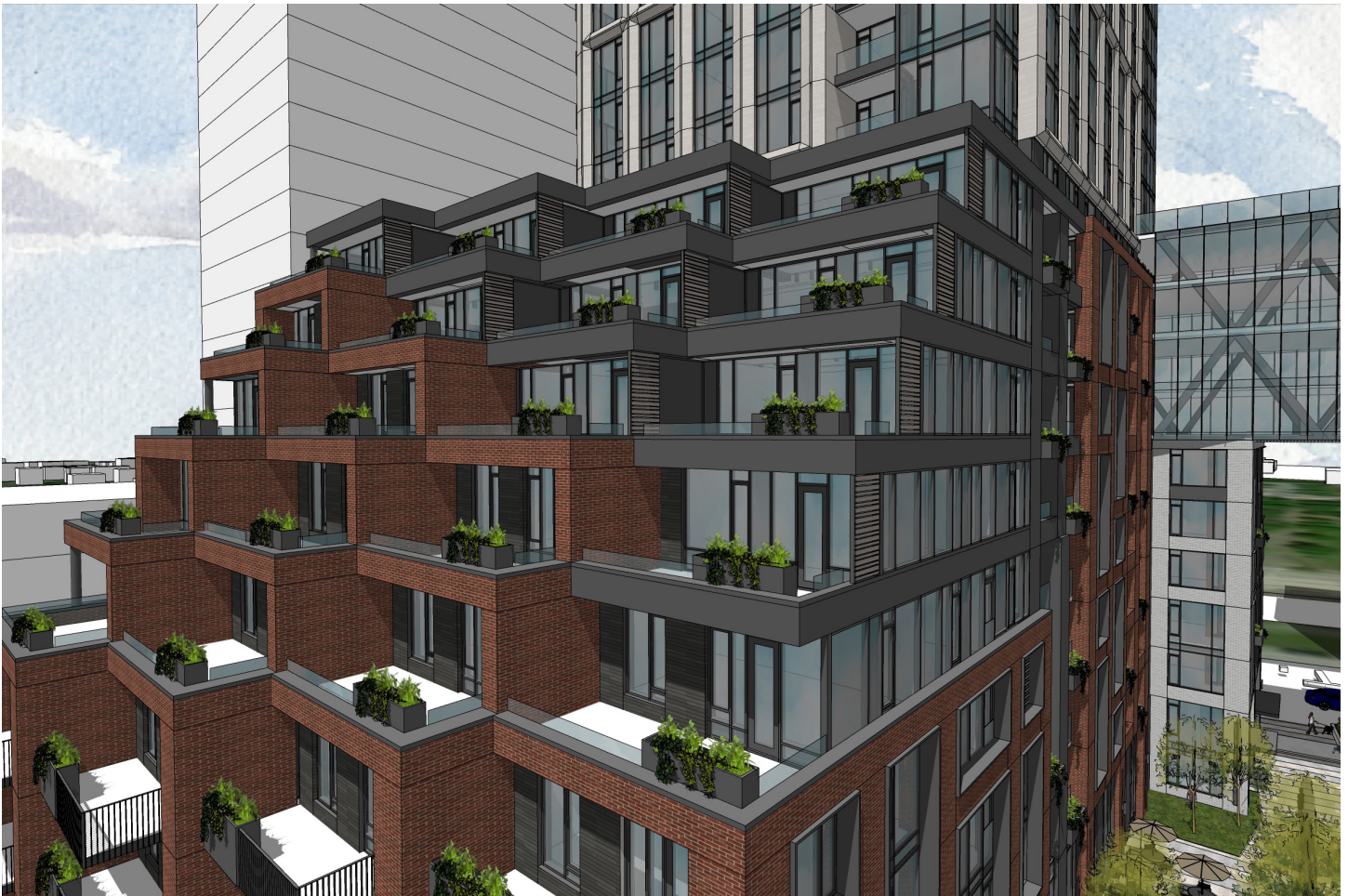


Figure 15.0 - View looking North-West, West building podium terraces.

## Building Transition

The podiums share a consistent datum along Scott Street. The six storey massing is segmented into bays, as inset balconies and changes in materiality separate out elements of the façade. The segmented bays also aim to create a repetitive, yet distinctive pattern at the pedestrian level. For users walking along Athlone Avenue, Scott Street, or through the interior plaza space, the scale of the building is minimized by the rhythmic use of masonry clad piers. The podiums wrap around the East and West facades individually and step down to meet the residential neighbourhood abutting the site. The terraces creating these stepped forms front Lion's Park, animating the buildings at various levels (Figure 15.0). The fine grain masonry materials and continuation of segmented bays on all facades of the podiums aim to reflect the existing context. Many low-rise residential homes along Athlone Avenue and Ashton Avenue are clad in masonry, and require the proposed development to mimic the scale, variable materiality, and textural quality of the neighbourhood (Figure 16.0).

Please refer to attached approved zoning envelope schedule for further information regarding building height and transition measures (Figure 48.0).

## The Middle

The four-storey bridge connecting the two buildings from levels seven through ten creates a unique skyline feature for those viewing from afar, yet not out of eye-level reach for pedestrians surrounding





Figure 16.0 - View of West building from the central public plaza space.

the site. The link, set back from the six storey podiums and tower masses along Scott Street, and cantilevered beyond the East and West building forms, highlights itself as a transition element. The link physically bridges the two buildings, yet signifies a vertical gap between each building's podium and tower components. The primarily glazed link aims to house active amenity spaces, further identifying itself through function and materiality (Figure 17.0).



Figure 17.0 - View of both towers and podiums from the abutting neighbourhood to the South.



## The Tower and the Top

The tower portion of each building aims to provide an sleek and elegant component to the composition. Pre-cast panels frame triple grid windows, emphasizing the verticality of the towers. The uniformity of the pre-cast panels and windows is countered by the glazed corners, further elongating the form. The top, setback from the body of the tower, houses some residential units and potentially additional amenity space. The architectural language is extended to encompass the mechanical penthouses and create a crown, visible from afar and impacting the Ottawa skyline (Figure 18.0).

The 40 storey towers provide density to the neighbourhood as they contain a total of 856 units. These units will consist of a variety of unit typologies. These unit's views benefit from the varied landscape and topography of the city. To the south, units will have an unobstructed view of the park, while along the North facades, residents will see the Ottawa River, and beyond, the Gatineau hills. To the North-East, residents will view the city's downtown core (Figures 44.0-47.0).

## Sustainability

The proposed development is exploring various sustainable strategies and components which may be suitable to the site. However, at this stage in the project, a specific approach has not yet been selected. It is intended that an appropriate sustainability strategy will be developed based on the proposed building's location, orientation, specific function, and needs.



Figure 18.0 - View of tower crowns looking South-East.







Figure 20.0 - View looking South from central public plaza space.

Ease of access to the site is further reinforced by the siting of the two towers, and the landscaping at grade (Figure 19.0). The site is serviced by OC Transpo bus routes and is within close walking distance of the future OC Transpo LRT Transit Station. Additionally, the site is accessed by vehicular traffic, pedestrians, and cyclists. The precise location of both towers and landscaping features aid in funneling users on foot into and through the site, towards entrances, and outdoor amenity spaces. Additionally, landscaping elements such as mature trees, planting walls containing vegetation, and shrubbery, helps to buffer traffic, noise, and wind, while creating safe and enjoyable designated zones for residents and users. For users travelling by vehicle, the development will be completed with three and a half levels

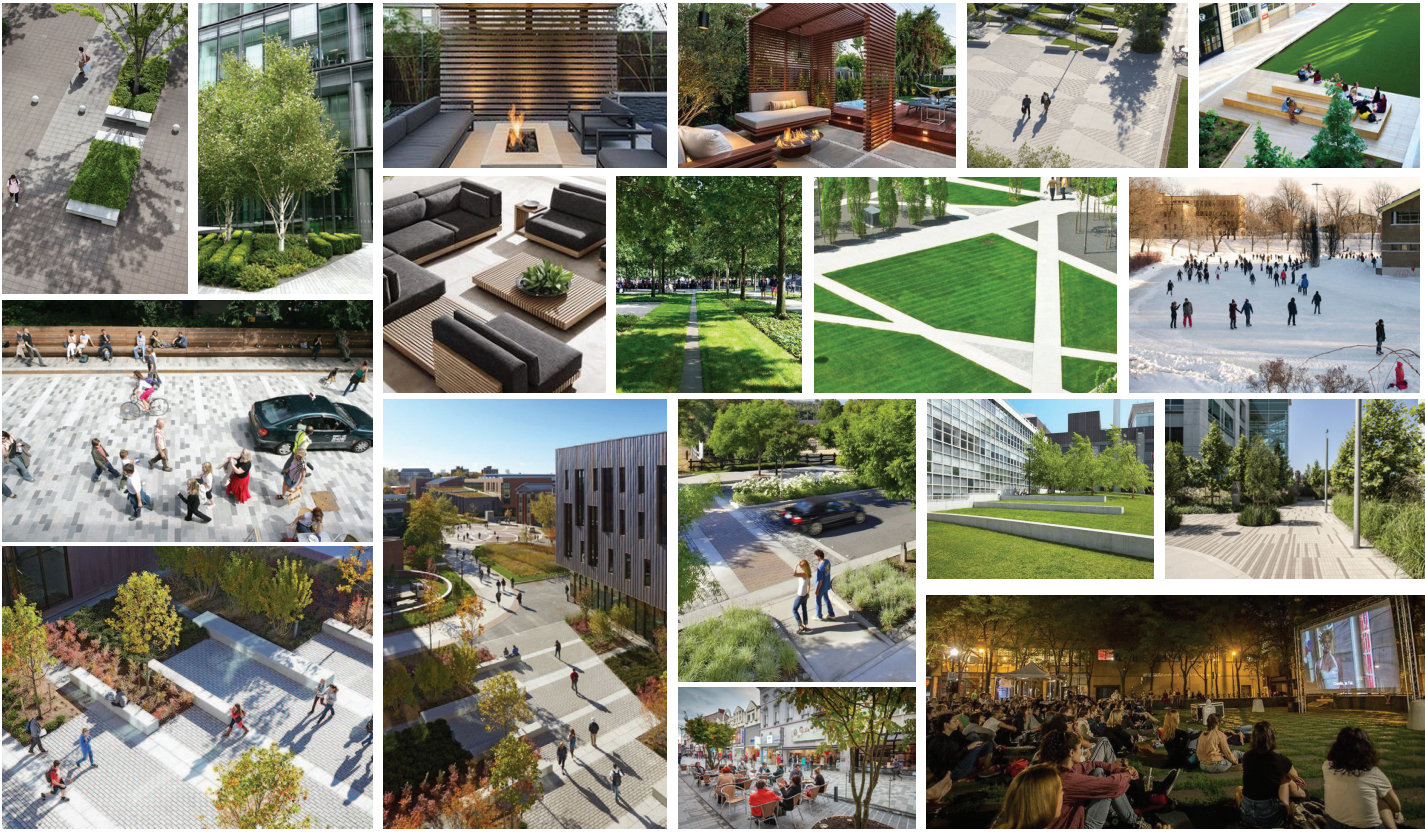


Figure 21.0 - Landscape concept images.

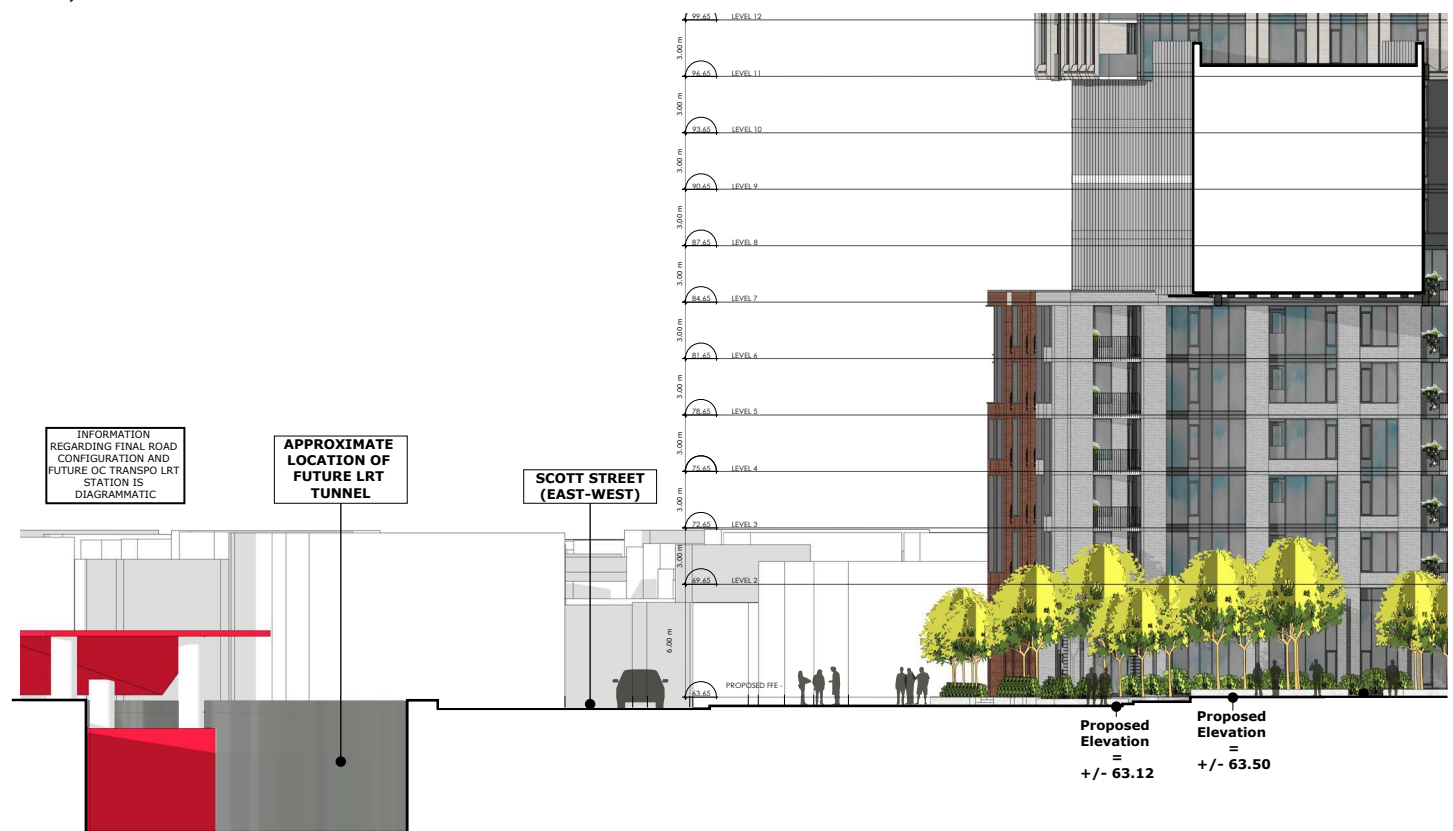


of underground vehicular parking at a ratio of 0.42 spaces per unit plus 60 visitor parking spaces for a total of +/- 418 parking spaces. The parking garage will have two access points. One access will be located at the West edge of the site along Scott Street, while the other will be located towards the South property boundary, along Athlone Avenue.

The site landscape strategy not only addresses site access, pedestrian flow, user comfort, and building functionality, but also delivers integrated solutions to various grade changes. The landscape design incorporates ramped entrances to each building and the public plaza along Scott Street, Athlone Avenue, as well as from Lion's Park. The site is strategically segmented to have hardscaped zones for pedestrians and cyclists, as well as commercial/retail and amenity terraces. These hardscape zones are further differentiated by paving materiality and planters, angular in nature to reflect the development's desire to funnel users throughout the site. These zones, along with vegetative planters and grassed areas, create comfortable spaces for users to sit, relax, and enjoy.

### Streetscape Cross Sections

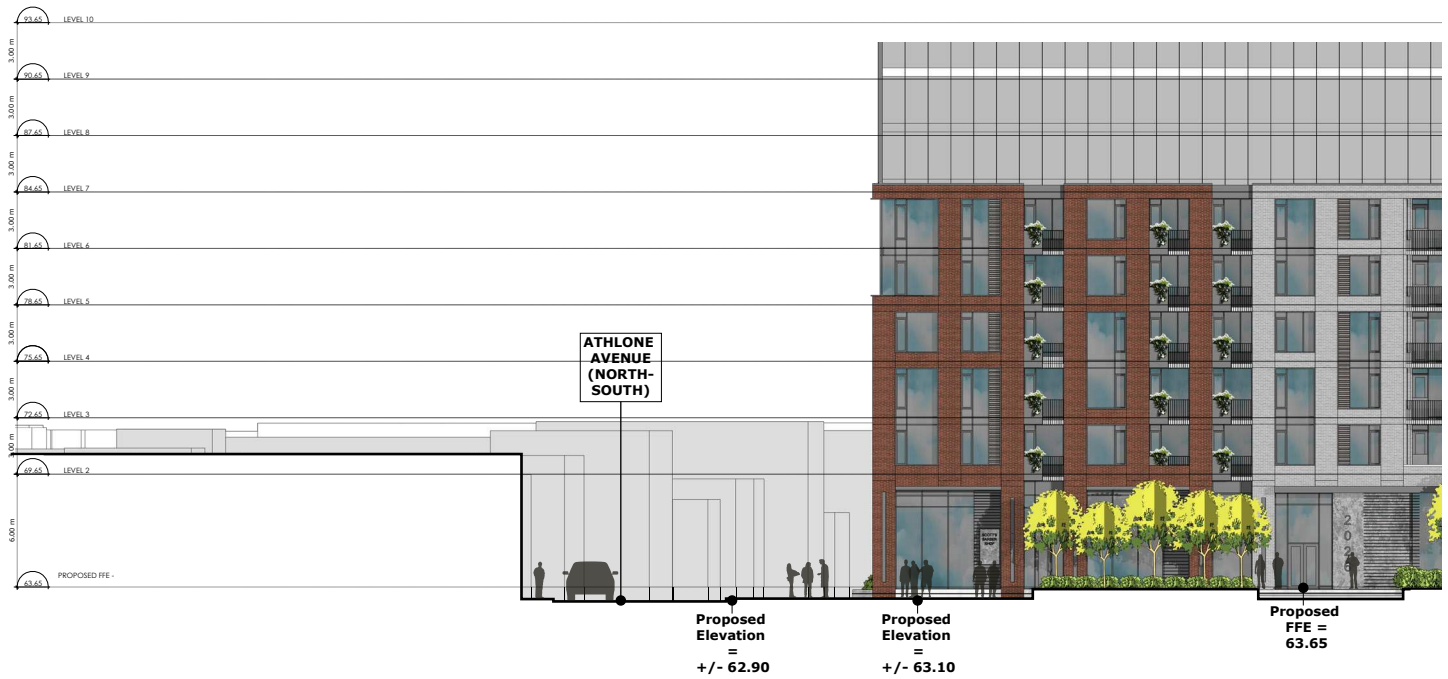
The following site sections reflect the manner in which the proposed development aims to reinvent the streetscape of Scott Street and Athlone Avenue, and connect to Lion's Park. The Scott Street site section's final proposed street condition and details regarding the future OC Transpo LRT Transit station are diagrammatic. It is intended that the Scott Street and Athlone Avenue intersection is to become an urban node within the city, flanked by the LRT station and the proposed development (Figures 22.0-24.0).



1 SCOTT STREET SITE SECTION  
A3.01 Scale: 1: 100

Figure 22.0 - Scott Street Site Section.





1 ATHLONE AVENUE SITE SECTION  
 A3.01 Scale: 1: 100

Figure 23.0 - Athlone Avenue Site Section.



1 LION'S PARK SITE SECTION  
 A3.01 Scale: 1: 100

Figure 24.0 - Lion's Park Site Section.







# ALTERNATE BUILDING MASSING STUDIES



Fig. 37.0  
Alternative Massing Study.



Fig. 38.0  
Alternative Massing Study.



Fig. 39.0  
Alternative Massing Study.



Fig. 40.0  
Alternative Massing Study.



Fig. 41.0  
Alternative Massing Study.

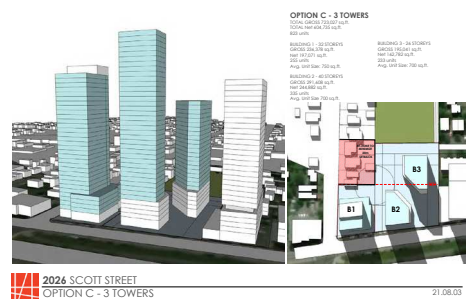


Fig. 42.0  
Alternative Massing Study.

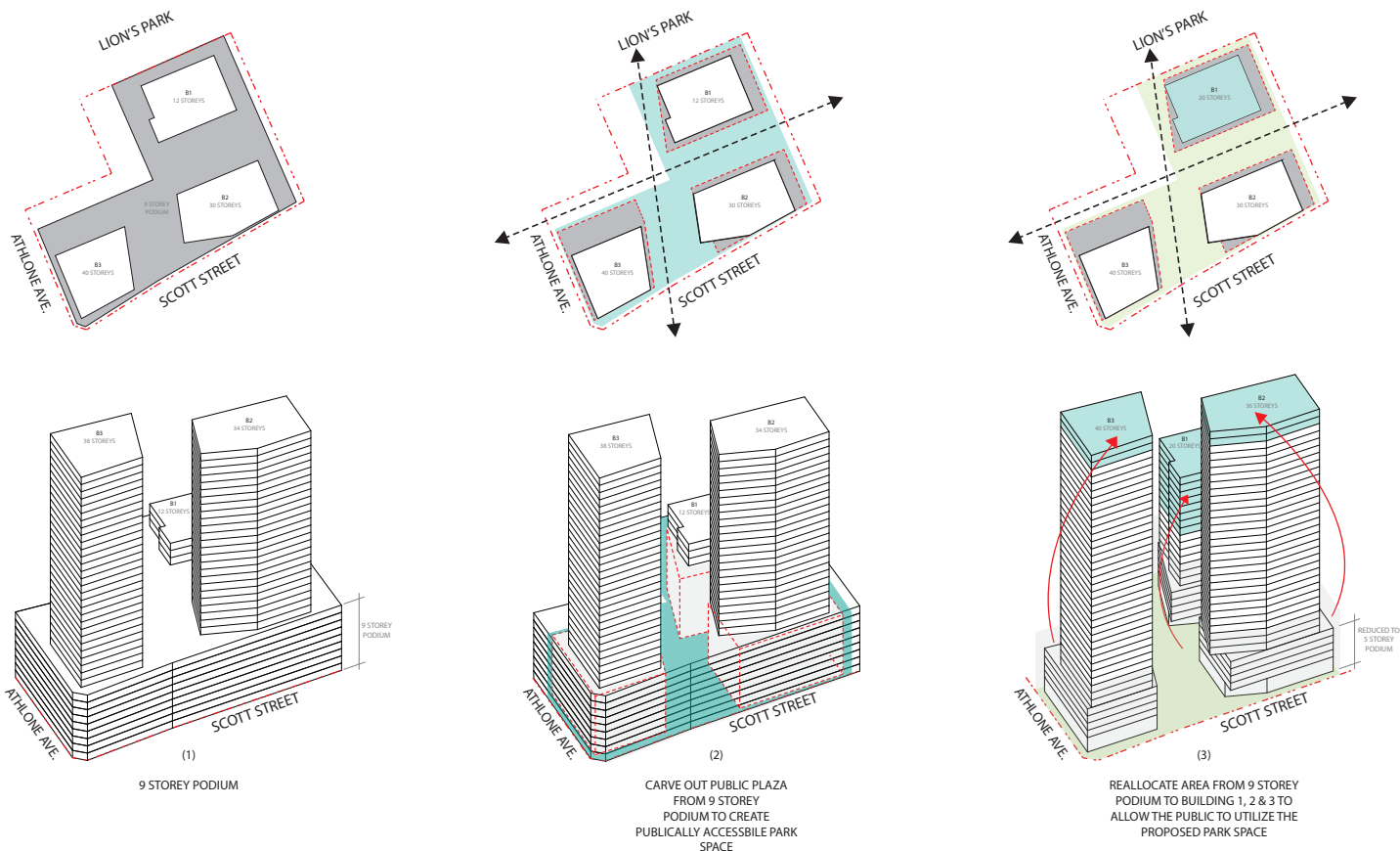


Figure 43.0 - Alternative three tower massing scheme diagram.



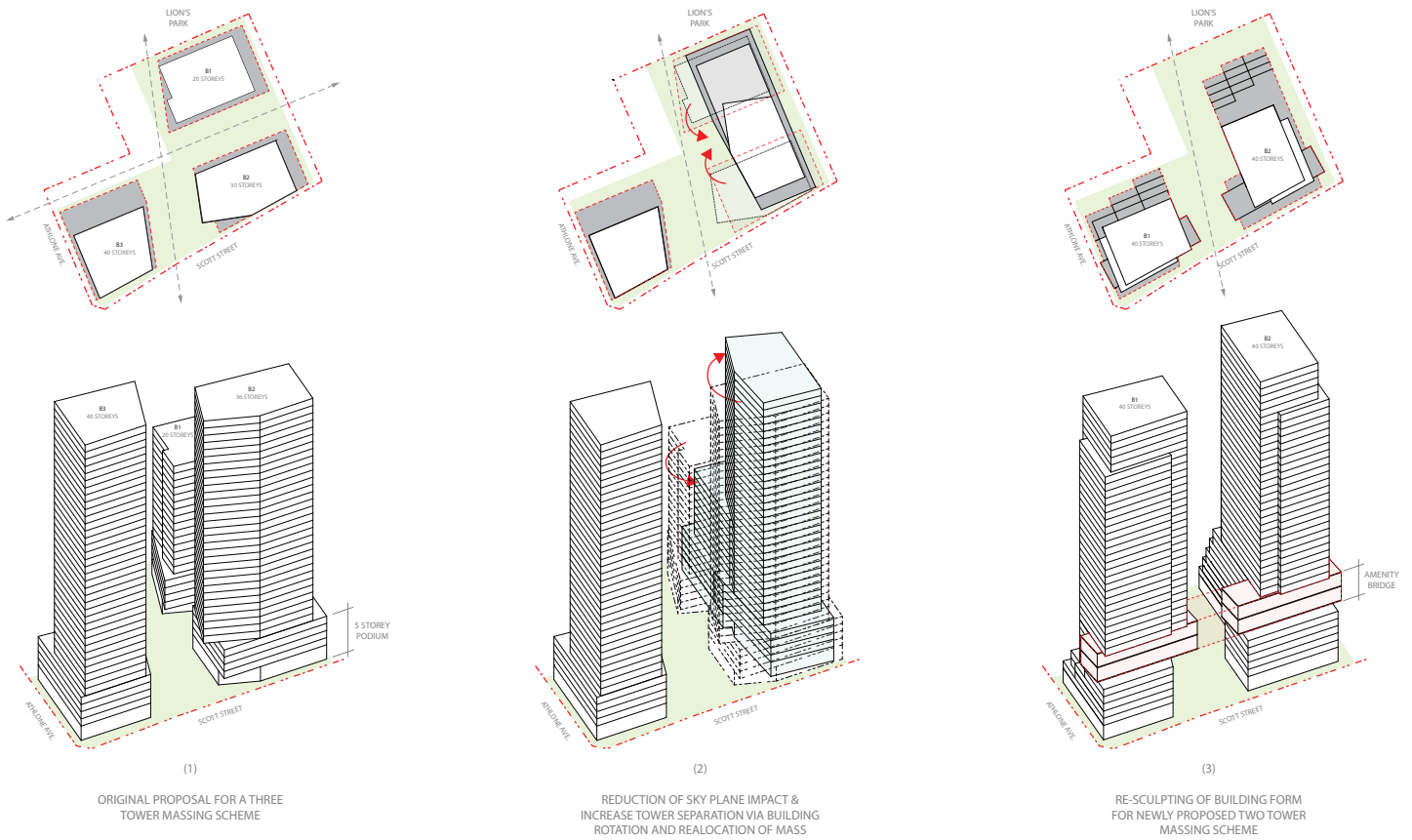


Figure 44.0 - Proposed design massing diagram.

### Alternative Massing Studies

The massing studies above (Figures 25.0-42.0) were not selected for various reasons relating to building orientation, transition, sun shadow impacts, site porosity, and the incorporation of public space. A number of three-tower massing strategies were explored. In particular, a three-tower scheme consisting of a 20-storey, 36-storey, and 40-storey scheme evolved as a means of carving out the As-of-Right massing, and reallocating the density into tower form to create a public plaza (Figure 43.0). This strategy divided the site with a North-South axis, creating a public thoroughfare from the future LRT station through to Lion’s Park. However, this strategy did not provide as great of relief to the adjacent neighbourhood as the current proposal.

The current proposal evolved from this three-tower iteration. The two most Western towers were rotated, merged, and shifted to reduce the skyline impact and provide greater relief to the South (Figure 44.0). This scheme results in greater building separation and more usable public space. The buildings were further sculpted to create a stepped form towards the abutting neighbourhood, link the two buildings through an amenity bridge, and further emphasize primary uses at grade. The proposed massing also maintains the through site connection from the future LRT station to Lion’s park. The proposed massing strategy results in a maximized exterior amenity space, increased pedestrian flow throughout the site, greater building separation, and improved transition to the adjacent neighbourhood.



## Summary of the Urban Design Review Panel Comments

The UDRP was in support of the two-tower approach based on a number of criteria. The Panel was appreciative of the stepped form towards the south, but wished for additional studies as to how this terraced massing could be developed further. The UDRP supported the notion of a bridge, however, the Panel had concerns over the bridge's height and relationship to the street. The UDRP also recommended the towers be of varying heights. The Panel recommended this site be mixed-use, given its proximity to the future LRT station. The Panel also encouraged further considerations of building transition and façade treatment along Athlone Avenue due to its proximity to low-rise residences.

### Updates Since ZBA Approval

On October 27, 2022, a motion was carried at a Planning Committee Meeting to approve the subject sites, 2006, 2020 & 2026 Scott Street, and 314 & 318 Athlone Avenue to be rezoned to TM[2829] S465-h.

Since attending the Urban Design Review Panel (UDRP) on September 9, 2022, and the Planning Committee meeting on October 27, 2022, the proposed design has continued to evolve.

The two-tower scheme presented to the Planning Committee remains similar in form and scale. The overall building massing has not been significantly altered. The tower forms for both the West and East buildings are both 40 storeys in height, as presented to the Planning Committee. City Staff and the Planning Committee encouraged the proposed development to not exceed 40 storeys. Therefore, in order to maintain density, we have not reduced or increased the building heights of either tower. The podium form was further developed in between presenting to the UDRP and presenting to the Planning Committee. The alterations included smaller stepped terraces along the South facades. Additionally, the scheme presented to the UDRP had continual stepping to the South façade of the tower portion of each building. The proposed scheme terminates the stepping further south from the towers, providing a greater setback from the abutting neighbourhood. This additional relief, along with the narrower stepped terraces, create a more delicate approach to the overall massing. The location and building footprints of both the East and West towers remain very similar to that proposed to the UDRP and Planning Committee. Since presenting to the Planning Committee the four-storey bridge form from levels seven through 10 has been revised, connecting the East and West buildings. The bridge creates a visual and physical break between the towers and podiums of each building. The amenity space, now linked, is visible from grade as you approach the site, as well as from afar and provides a unique element to passersby, as well as for users experiencing the bridge from within. The bridge is still being developed, as the specific uses within this space are still being defined. Therefore, the external design is yet to be finalized.

The architectural language has been further developed, as the design proposed to the Planning Committee was presented as massing with architectural intent. Materiality, porosity, scale, and texture have been explored as a means of defining the proposed buildings' language. The podium consists of varying masonry materials, punctuated by glazing where porosity is essential. The varied masonry aims to break up the facades and provide visual intent of the programmatic uses. The masonry clad stepped terraces along the South edge of the podiums aim to reflect the low-rise residential scale and quality. The towers, clad in pre-cast panels framing triple height windows elongate the form and provide a rhythmic grid to all facades. The landscape proposal has evolved parallel to the architecture, as the buildings' architectural language, programmatic functions, and formal elements have been further developed.



# Elevations

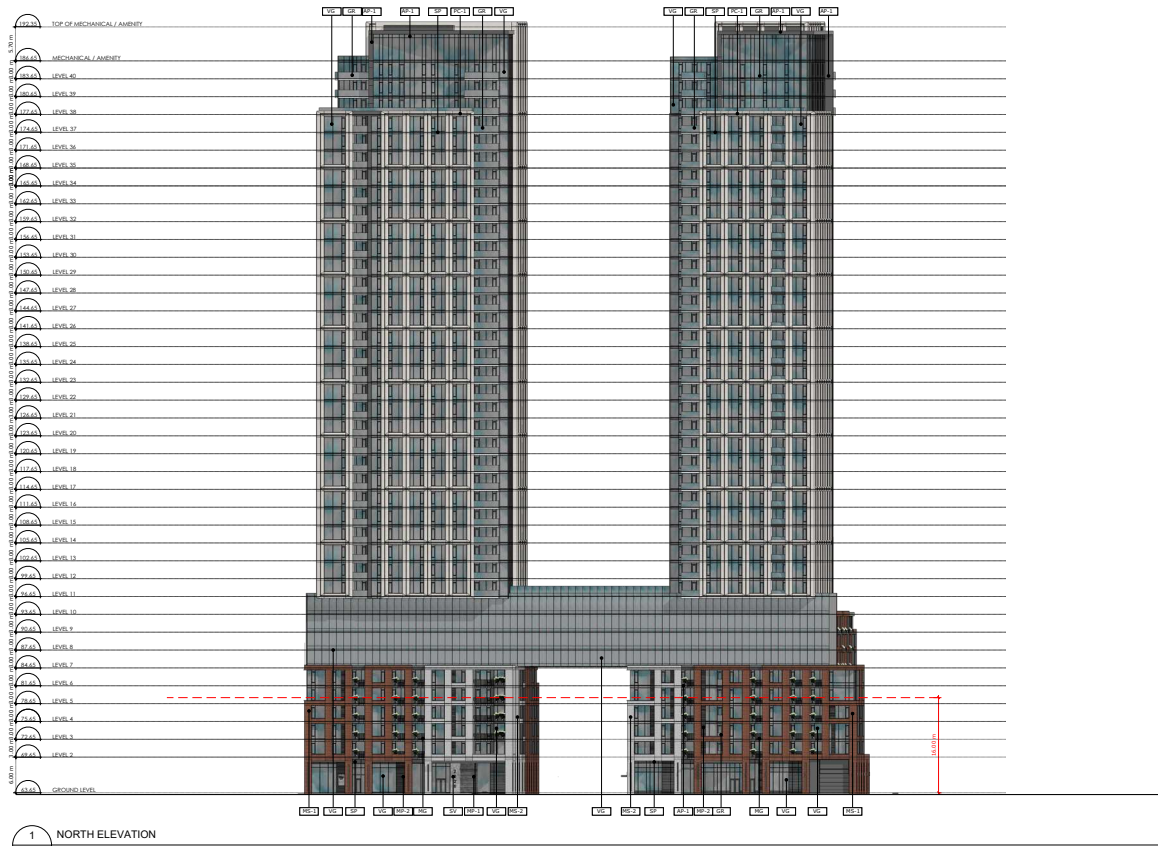


Figure 45.0 - Building 1 + 2 North Elevations

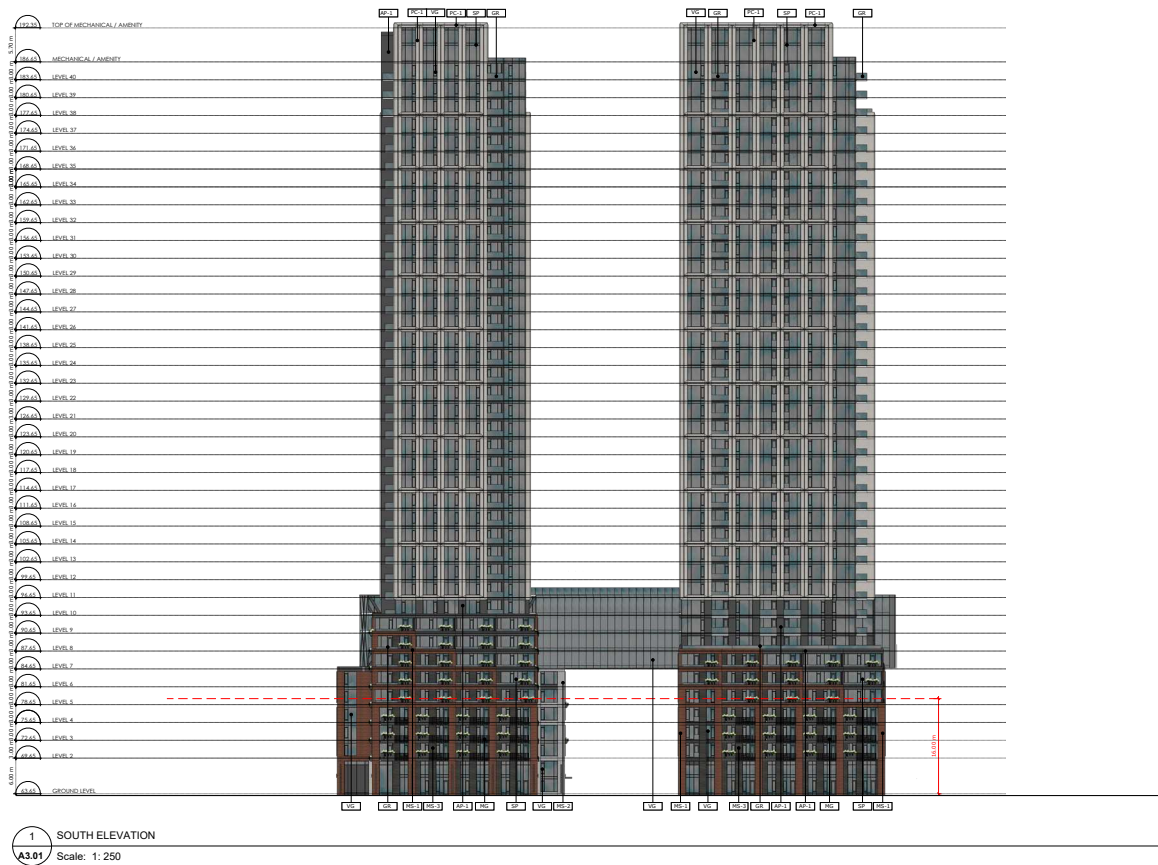


Figure 46.0 - Building 1 + 2 South Elevations



# Elevations



Figure 47.0 - East Building East Elevation + West Building West Elevation.

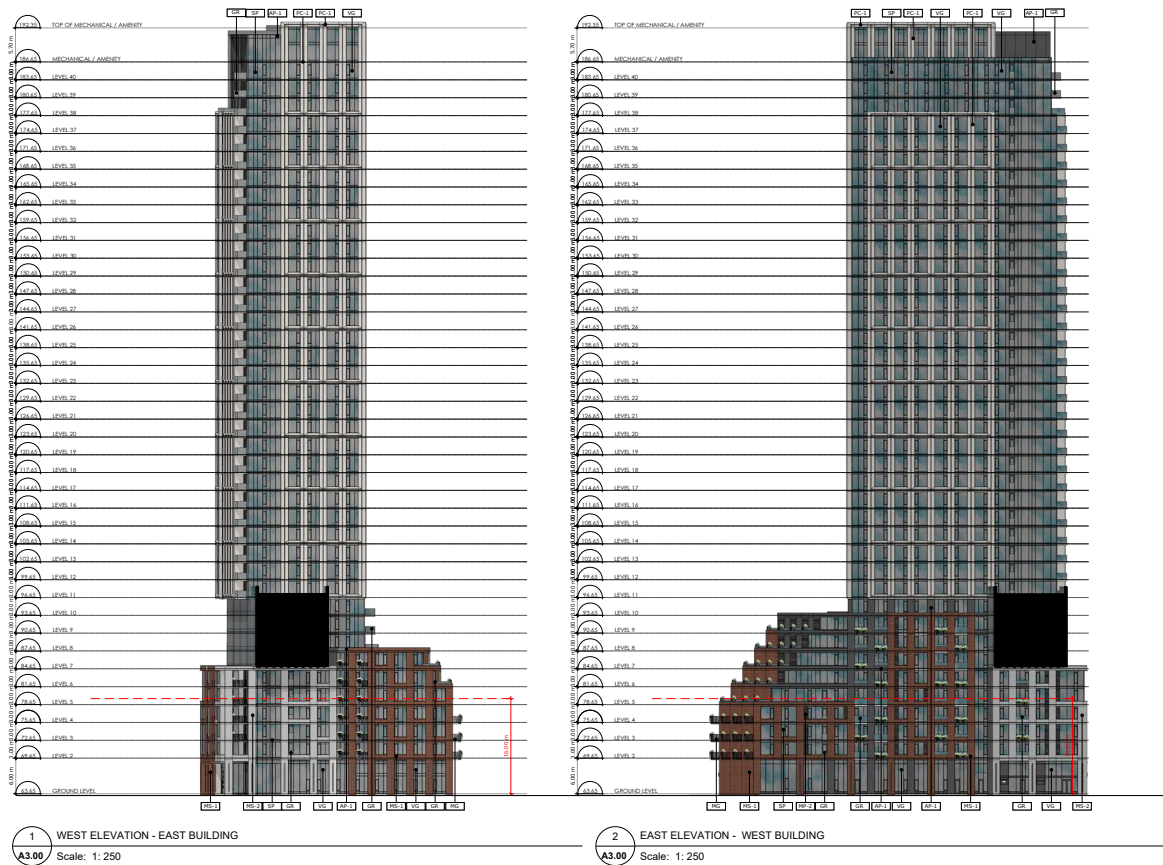
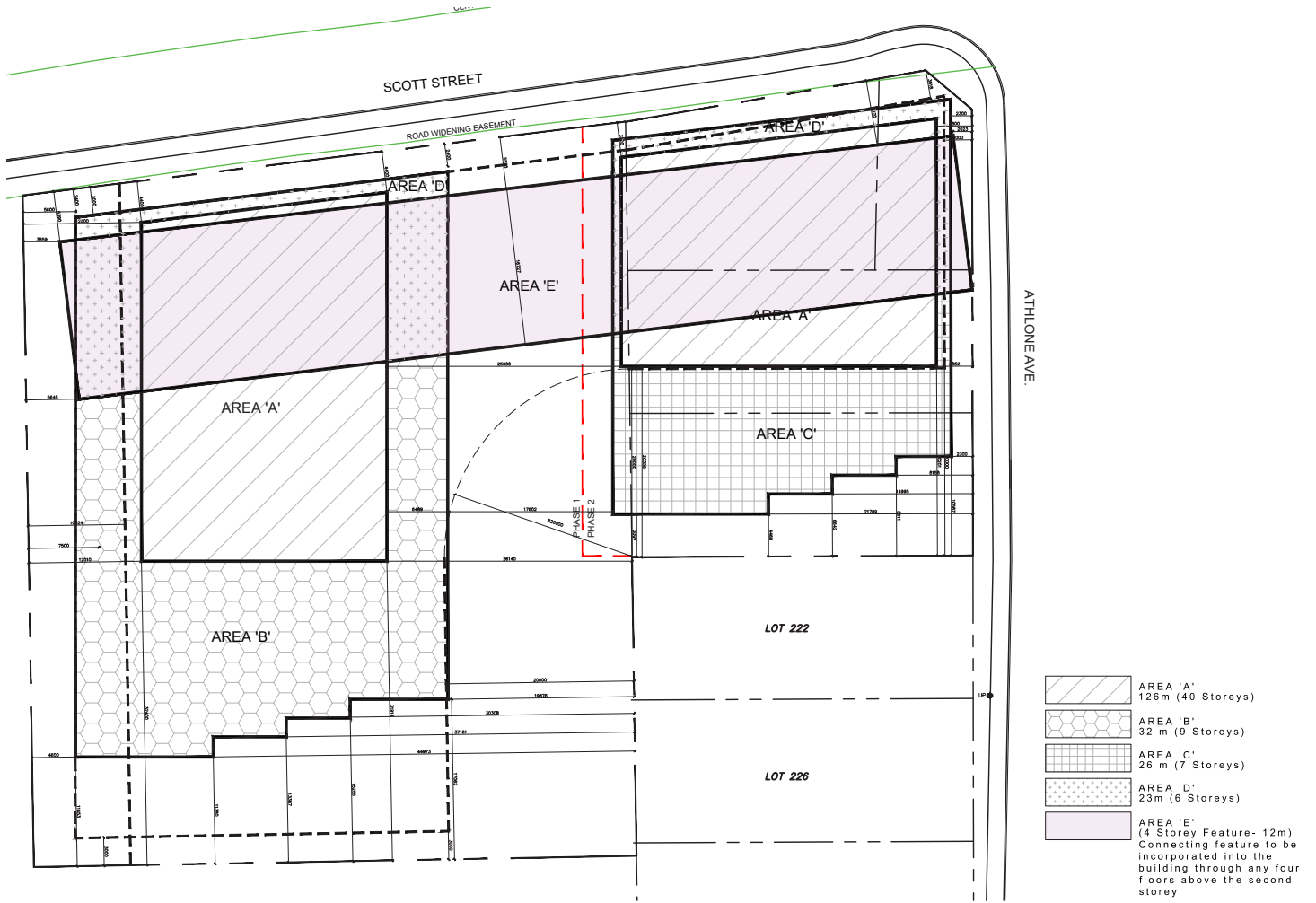


Figure 48.0 - East Building West Elevation + West Building East Elevation

# Zoning Envelope Schedule



**2026 SCOTT STREET**  
ZONING ENVELOPE SCHEDULE

SCALE 1:500

December 12, 2022

Figure 49.0 - Approved Zoning Envelope Schedule