

PROJECT TEAM

ARCHITECT
 HOBIN ARCHITECTURE
 PATRICK BISSON
 T 613-238-7200

PLANNING
 FOTENY CONSULTANTS INC.
 ANGELO TREMBLAY
 T 613-730-5709

CIVIL
 NOVATECH
 T 613-254-9643 X209

LANDSCAPE ARCHITECT
 PROJECT PASSAGE
 SERGE GALLIARD
 T 514-891-5442

TRANSPORTATION
 NOVATECH
 JENNIFER LUCING
 T 613-254-9643 X254

ENVIRONMENTAL
 GRADIENT WIND ENGINEERING
 JOSHUA FOSTER
 T 613-836-0634

SURVEYOR
 STANTEC
 BRIAN WEBSTER
 T 613-229-7444

no.	date	revision
4	23-10-13	REISSUED FOR SITE PLAN CONTROL
3	23-02-22	ISSUED FOR SITE PLAN CONTROL
2	22-04-07	ISSUED FOR REZONING
1	21-06-08	CITY OF OTTAWA PRECONSULTATION

It is the responsibility of the appropriate contractor to check and verify all dimensions on site and report all errors and/or omissions to the architect.

All contractors must comply with all pertinent codes and by-laws.
 Do not scale drawings.

This drawing may not be used for construction until signed.

Copyright reserved.

Hobin Architecture Incorporated
 63 Pamela Street
 Ottawa, Ontario
 Canada K1S 3K7
 T: 613 238 7200
 F: 613 235 2005
 E: info@hobinarc.com
 hobinarc.com

PROJECT LOCATION:
 MORLEY HOPPNER LTD.
 314 & 318 ATHLONE AVE., 2006, 2020, 2026 SCOTT ST.
 OTTAWA ON.

DRAWING TITLE:
 PARKING LEVEL 4

DRAWN BY: PB **DATE:** 23-10-13 **SCALE:** 1:150

PROJECT: 2026

DRAWING NO.: A2.00

3049

REVISION NO.:



PROJECT TEAM

ARCHITECT
HOBIN ARCHITECTURE
PATRICK BISSON
T: 613-238-7200

PLANNING
FOTENY CONSULTANTS INC.
ANGEL TREMBLAY
T: 613-730-5709

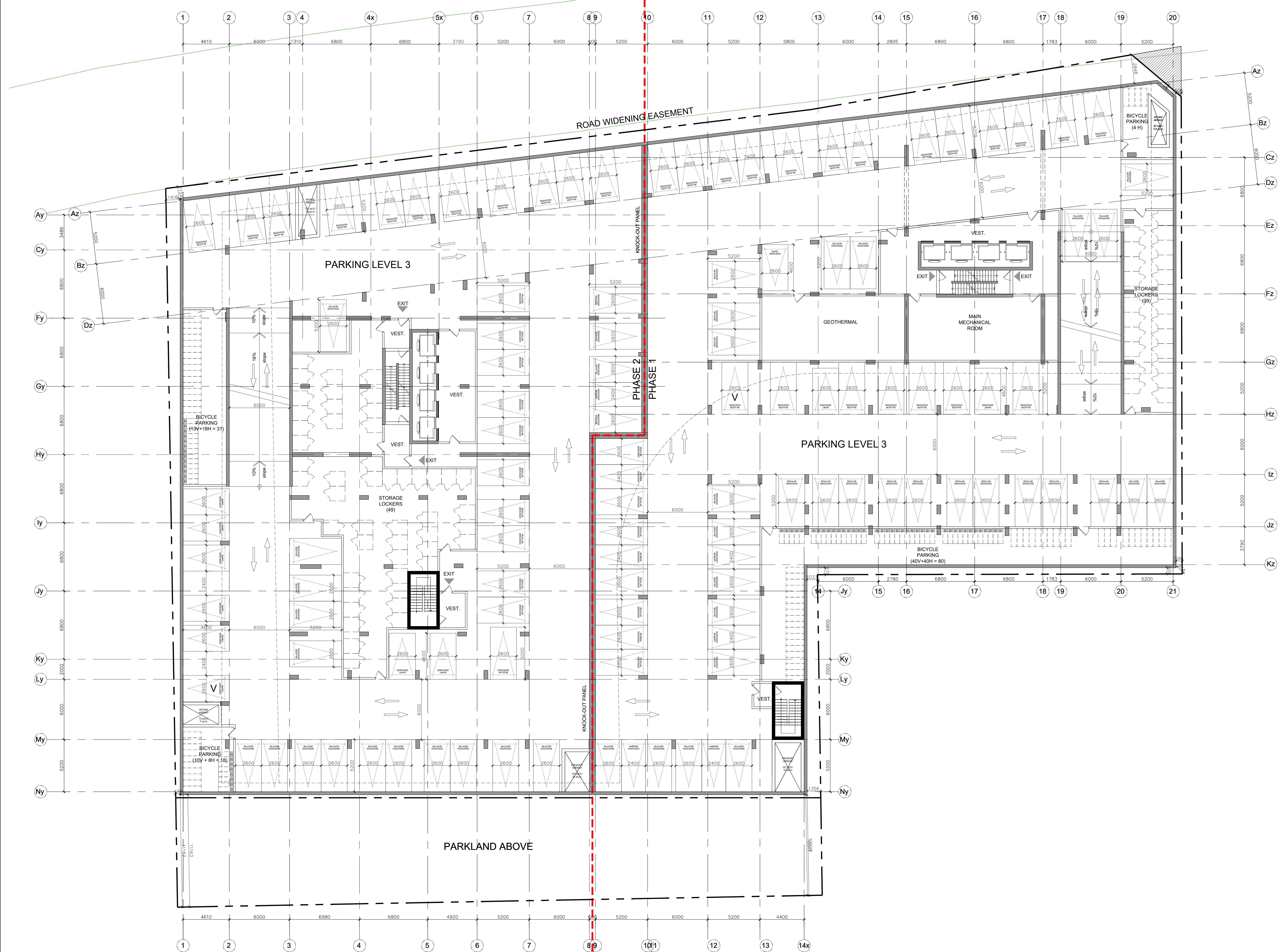
CIVIL
NOVATECH
LEE SHEETS
T: 613-254-9643 X209

LANDSCAPE ARCHITECT
PROJECT PACKAGE
SERGE GALLAN
T: 614-881-5442

TRANSPORTATION
NOVATECH
JENNIFER LUONG
T: 613-254-9643 X254

ENVIRONMENTAL
GRADIENT WIND ENGINEERING
JOSHUA FOSTER
T: 613-834-0634

SURVEYOR
STANTEC
BRIAN WEBSTER
T: 613-229-7444



no.	date	revision
4	23-10-13	REISSUED FOR SITE PLAN CONTROL
3	23-02-22	ISSUED FOR SITE PLAN CONTROL
2	23-04-07	ISSUED FOR REZONING
1	21-06-08	CITY OF OTTAWA PRECONSULTATION

It is the responsibility of the appropriate contractor to check and verify all dimensions on site and report all errors and/or omissions to the architect.

All contractors must comply with all pertinent codes and by-laws.

Do not scale drawings.

This drawing may not be used for construction until signed.

Copyright reserved.

Hobin Architecture Incorporated
63 Pamela Street
Ottawa, Ontario
Canada K1S 3K7
T: 613 238 7200
F: 613 235 2005
E: mail@hobinarc.com
hobinarc.com

PROJECT LOCATION:
MORLEY HOPPNER LTD.
314 & 318 ATLHONE AVE., 2006,2020, 2026 SCOTT ST.
OTTAWA ON.

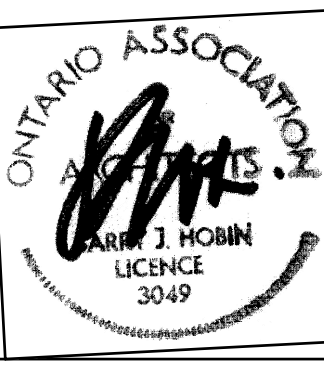
DRAWING TITLE:
PARKING LEVEL 3

DRAWN BY: DATE: SCALE:
PB 23-10-13 1:150

PROJECT:
2026

DRAWING NO.:
A2.01

REVISION NO.:



PROJECT TEAM

ARCHITECT
HOBIN ARCHITECTURE
PATRICK BISSON
T: 613-238-7200

PLANNING
FOTENR CONSULTANTS INC.
ANGEL TREMBLAY
T: 613-730-5709

CIVIL
NOVATECH
LEE SHEETS
T: 613-254-9643 X209

LANDSCAPE ARCHITECT
PROJECT PACKAGE
SERGE GALLAN
T: 614-881-5442

TRANSPORTATION
NOVATECH
JENNIFER LUONG
T: 613-254-9643 X254

ENVIRONMENTAL
GRADIENT WIND ENGINEERING
JOSHUA FOSTER
T: 613-834-0634

SURVEYOR
STANTEC
BRIAN WEBSTER
T: 613-229-7444

no.	date	revision
4	23-10-13	REISSUED FOR SITE PLAN CONTROL
3	23-02-22	ISSUED FOR SITE PLAN CONTROL
2	23-04-07	ISSUED FOR REZONING
1	21-06-08	CITY OF OTTAWA PRECONSULTATION

It is the responsibility of the appropriate contractor to check and verify all dimensions on site and report all errors and/or omissions to the architect.

All contractors must comply with all pertinent codes and by-laws.

Do not scale drawings.

This drawing may not be used for construction until signed.

Copyright reserved.

Hobin Architecture Incorporated
63 Pamela Street
Ottawa, Ontario
Canada K1S 3K7
T: 613 238 7200
F: 613 235 2005
E: mail@hobinarc.com
hobinarc.com

PROJECT LOCATION:
MORLEY HOPPNER LTD.
314 & 318 ATHLONE AVE., 2006, 2020, 2026 SCOTT ST.
OTTAWA ON.

DRAWING TITLE:
PARKING LEVEL 2

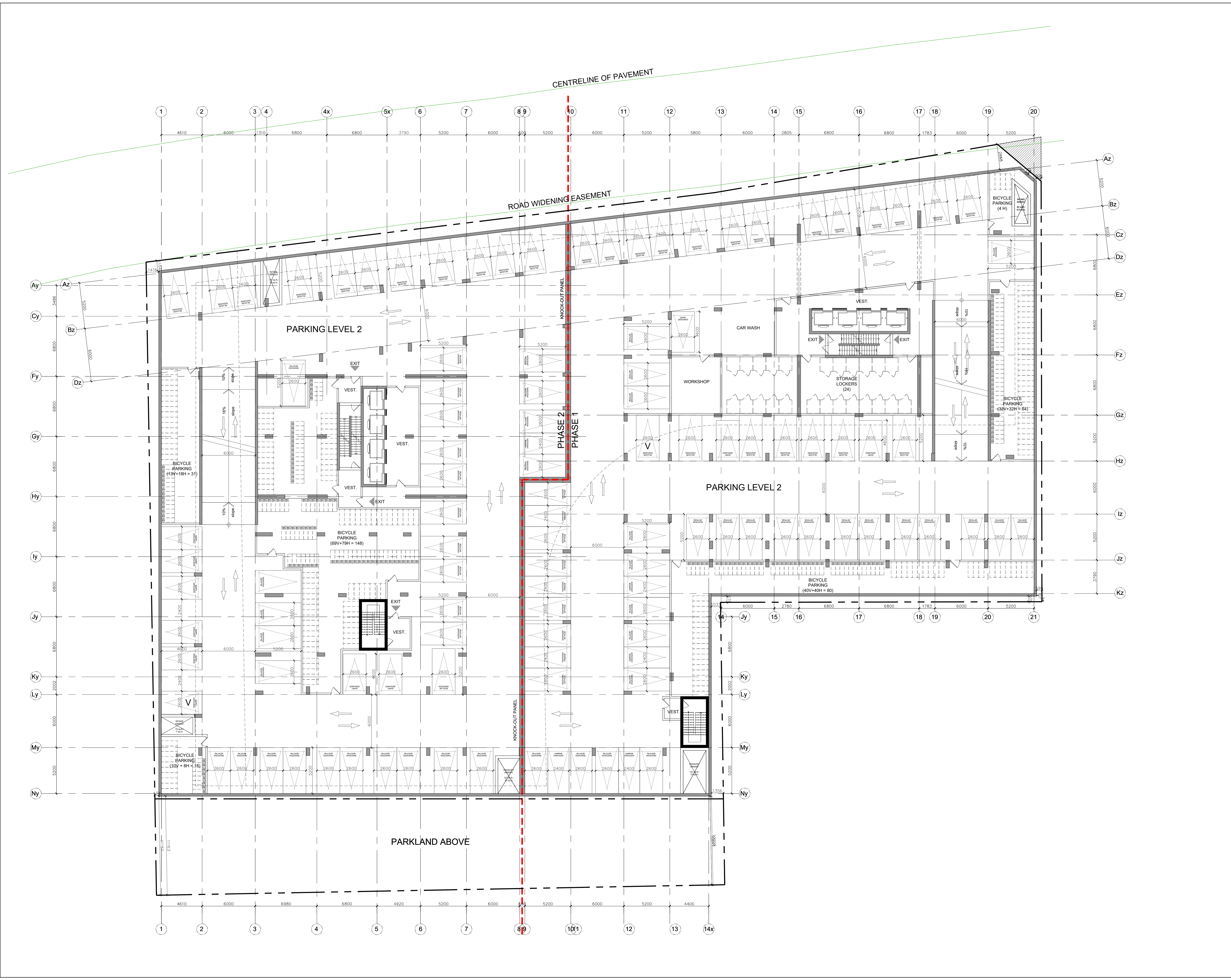
DRAWN BY: DATE: SCALE:
PB 23-10-13 1:150

PROJECT:
2026

DRAWING NO.:

A2.02

REVISION NO.:



PROJECT TEAM

ARCHITECT
HOBIN ARCHITECTURE
PATRICK BISSON
T: 613-238-7200

PLANNING
FOTENY CONSULTANTS INC.
ANGEL TREMBLAY
T: 613-730-5709

CIVIL
NOVATECH
LEE SHEETS
T: 613-254-9643 X209

LANDSCAPE ARCHITECT
PROJECT PACKAGE
SERGE GALLAN
T: 614-881-5442

TRANSPORTATION
NOVATECH
JENNIFER LUONG
T: 613-254-9643 X254

ENVIRONMENTAL
GRADIENT WIND ENGINEERING
JOSHUA FOSTER
T: 613-836-0634

SURVEYOR
STANTEC
BRIAN WEBSTER
T: 613-229-7644

no.	date	revision
4	23-10-13	REISSUED FOR SITE PLAN CONTROL
3	23-02-22	ISSUED FOR SITE PLAN CONTROL
2	23-04-07	ISSUED FOR REZONING
1	21-06-08	CITY OF OTTAWA PRECONSULTATION

It is the responsibility of the appropriate contractor to check and verify all dimensions on site and report all errors and/or omissions to the architect.

All contractors must comply with all pertinent codes and by-laws.

Do not scale drawings.

This drawing may not be used for construction until signed.

Copyright reserved.

Hobin Architecture Incorporated
63 Pamela Street
Ottawa, Ontario
Canada K1S 3K7
T: 613 238 7200
F: 613 235 2005
E: info@hobin.com
hobin.com

PROJECT LOCATION:
MORLEY HOPPNER LTD.
314 & 318 ATHLONE AVE., 2006, 2020, 2026 SCOTT ST.
OTTAWA ON.

DRAWING TITLE:
PARKING LEVEL 1

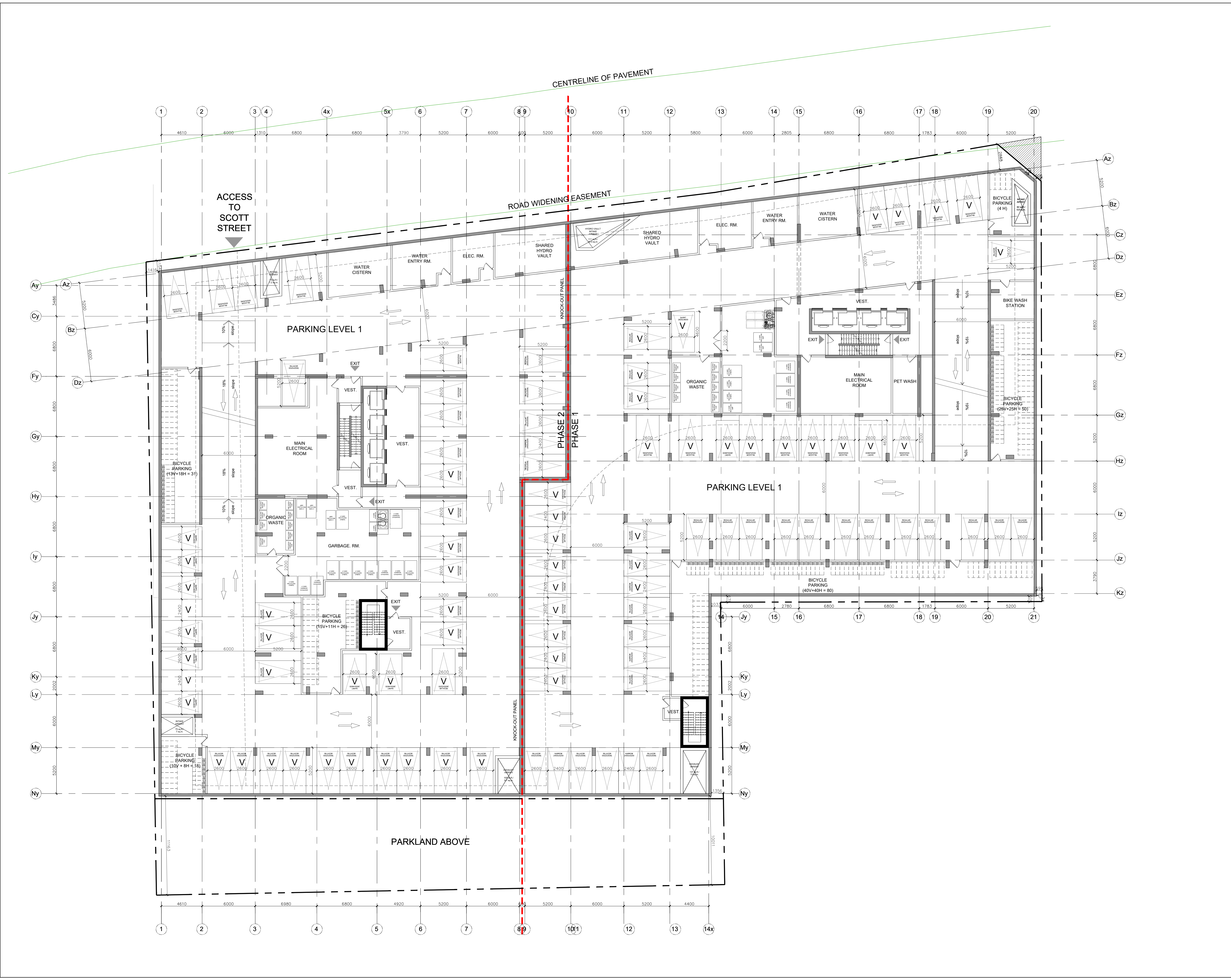
DRAWN BY: DATE: SCALE:
PB 23-10-13 1:150

PROJECT:
2026

DRAWING NO.:

A2.03

REVISION NO.:



PROJECT TEAM

ARCHITECT
 HOBIN ARCHITECTURE
 PATRICK BOSSON
 T: 613-238-7200

PLANNING
 POTERIN CONSULTANTS INC.
 MIGUEL TREMBLAY
 T: 613-735-5709

CIVIL
 NOVATECH
 LEE SHEETS
 T: 613-254-9643 X209

LANDSCAPE ARCHITECT
 PROJECT PAYSAGE
 SERGE GALLANT
 T: 514-889-5442

TRANSPORTATION
 NOVATECH
 JENNIFER LUONG
 T: 613-254-9643 X254

ENVIRONMENTAL
 GRADIENT WIND ENGINEERING
 JOSHUA FOSTER
 T: 613-834-0634

SURVEYOR
 STANTEC
 BRIAN WEBSTER
 T: 613-229-7444

DRAFT

no.	date	revision
4	23-10-13	REISSUED FOR SITE PLAN CONTROL
3	23-02-22	ISSUED FOR SITE PLAN CONTROL
2	23-04-07	ISSUED FOR REZONING
1	21-08-08	CITY OF OTTAWA PRECONSULTATION

It is the responsibility of the appropriate contractor to check and verify all dimensions on site and report all errors and/or omissions to the architect.

All contractors must comply with all pertinent codes and by-laws.

Do not scale drawings.
 This drawing may not be used for construction until signed.

Copyright reserved.

Hobin Architecture Incorporated
 63 Pamela Street
 Ottawa, Ontario
 Canada K1S 3K7
 T: 613 238 7200
 F: 613 235 2005
 E: info@hobinarch.com
 hobinarch.com

PROJECT LOCATION:
 MORLEY HOPPNER LTD.
 314 & 318 ATHLONE AVE., 2006.2020.2026 SCOTT ST.
 OTTAWA ON.

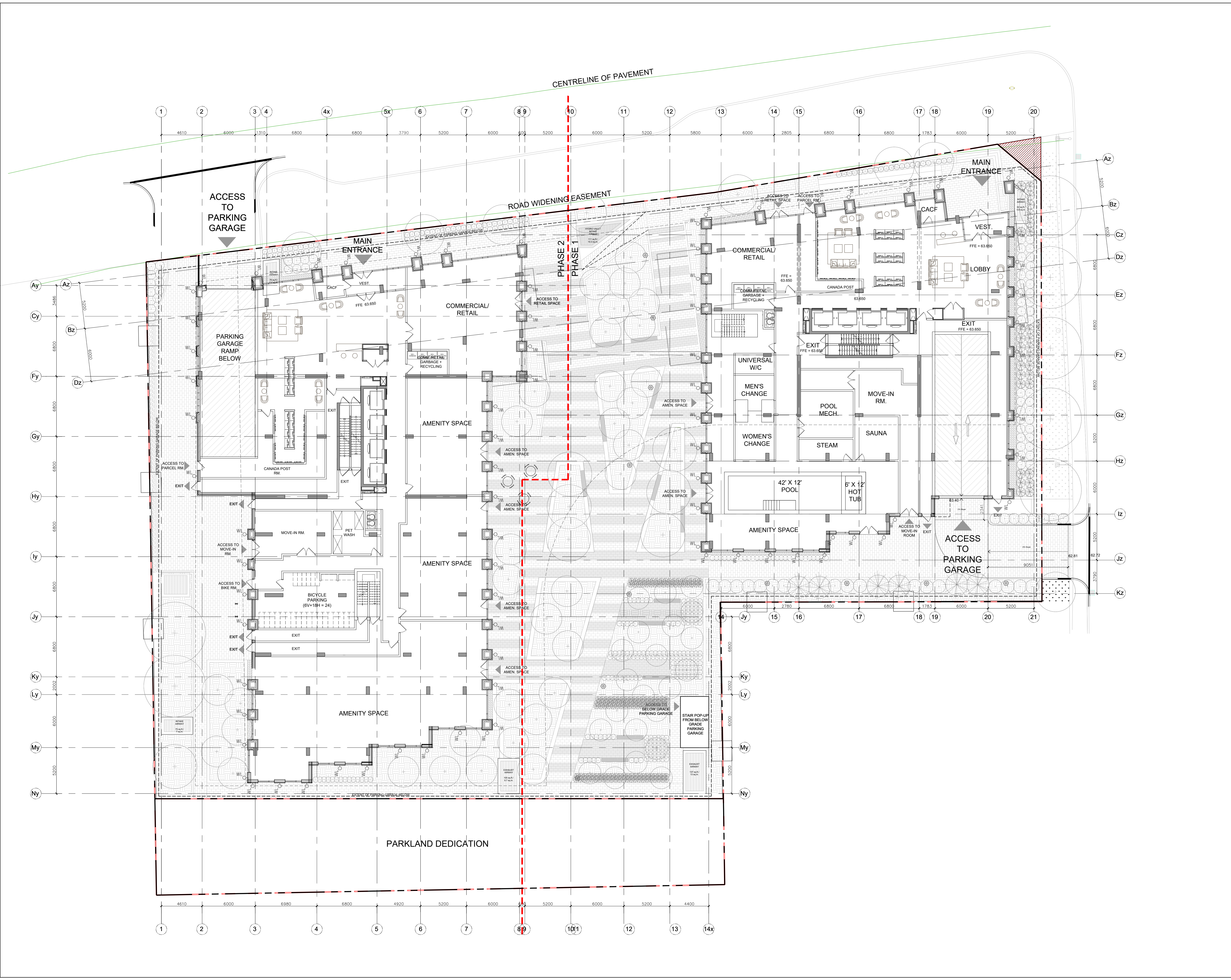
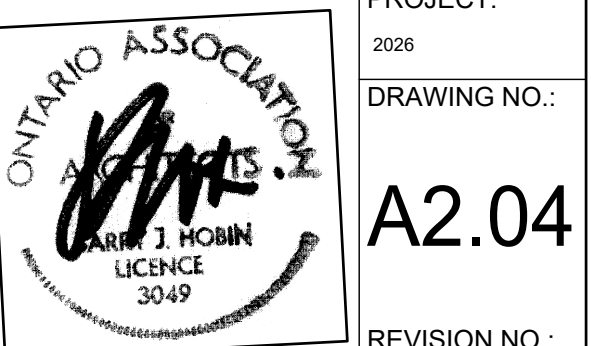
DRAWING TITLE:
 GROUND PLAN

DRAWN BY: DATE: SCALE:
 PB 23-10-13 1/150

PROJECT:
 2026

DRAWING NO.:
 A2.04

REVISION NO.:



PROJECT TEAM

ARCHITECT
 HOBIN ARCHITECTURE
 PATRICK BISSON
 T 613-238-7200

PLANNING
 FOTENY CONSULTANTS INC.
 ANGELO TREMBLAY
 T 613-730-5709

CIVIL
 NOVATECH
 LEE SHEETS
 T 613-254-9643 X209

LANDSCAPE ARCHITECT
 PROJECT PAVAGE
 SERGE GALLANZ
 T 514-891-5442

TRANSPORTATION
 NOVATECH
 JENNIFER LUONG
 T 613-254-9643 X254

ENVIRONMENTAL
 GRADIENT WIND ENGINEERING
 JOSHUA FOSTER
 T 613-834-0634

SURVEYOR
 STANTEC
 BRIAN WEBSTER
 T 613-229-7444

no.	date	revision
4	23-10-13	REISSUED FOR SITE PLAN CONTROL
3	23-02-22	ISSUED FOR SITE PLAN CONTROL
2	22-04-07	ISSUED FOR REZONING
1	21-06-08	CITY OF OTTAWA PRECONSULTATION

It is the responsibility of the appropriate contractor to check and verify all dimensions on site and report all errors and/or omissions to the architect.

All contractors must comply with all pertinent codes and by-laws.
 Do not scale drawings.

This drawing may not be used for construction until signed.

Copyright reserved.

Hobin Architecture Incorporated
 63 Pamela Street
 Ottawa, Ontario
 Canada K1S 3K7
 T: 613 238 7200
 F: 613 235 2005
 E: mail@hobinarc.com
 hobinarc.com

PROJECT LOCATION:
 MORLEY HOPPNER LTD.
 314 & 318 ATHLONE AVE., 2006, 2020, 2026 SCOTT ST.
 OTTAWA ON.

DRAWING TITLE:
 LEVEL 2

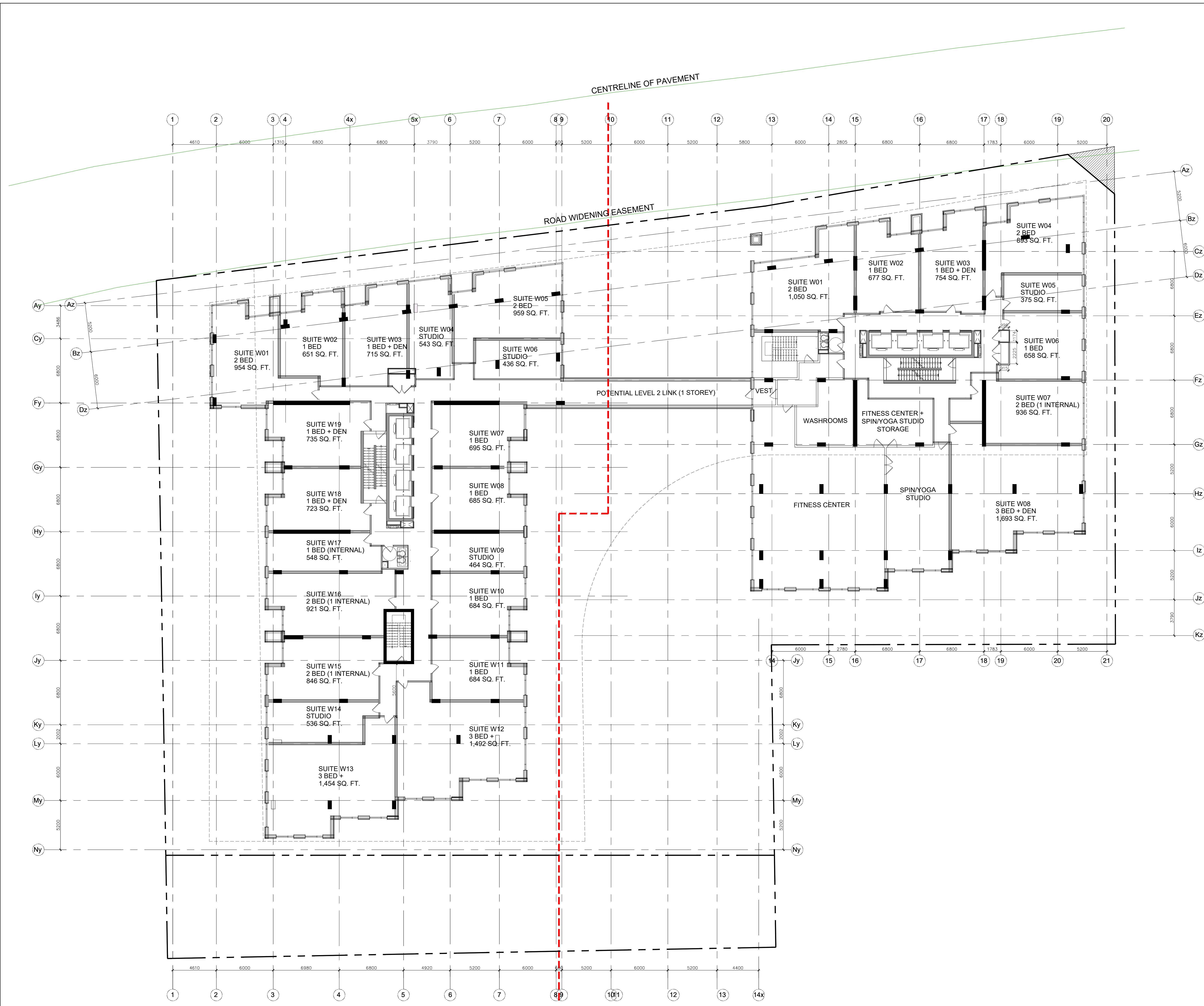
DRAWN BY: PB **DATE:** 23-10-13 **SCALE:** 1/150

PROJECT: 2026

DRAWING NO.: A2.05

3049 LICENCE

REVISION NO.:



PROJECT TEAM

ARCHITECT
 HOBIN ARCHITECTURE
 PATRICK BISSON
 T 613-238-7200

PLANNING
 FOTENY CONSULTANTS INC.
 ANGELO TREMBLAY
 T 613-730-5709

CIVIL
 NOVATECH
 LEE SHEETS
 T 613-254-9643 X209

LANDSCAPE ARCHITECT
 PROJECT PASSAGE
 SERGE GALLIARD
 T 514-891-5442

TRANSPORTATION
 NOVATECH
 JENNIFER LUCING
 T 613-254-9643 X254

ENVIRONMENTAL
 GRADIENT WIND ENGINEERING
 JOSHUA FOSTER
 T 613-834-0634

SURVEYOR
 STANTEC
 BRIAN WEBSTER
 T 613-229-7644



no.	date	revision
4	23-10-13	REISSUED FOR SITE PLAN CONTROL
3	23-02-22	ISSUED FOR SITE PLAN CONTROL
2	22-04-07	ISSUED FOR REZONING
1	21-06-08	CITY OF OTTAWA PRECONSULTATION

It is the responsibility of the appropriate contractor to check and verify all dimensions on site and report all errors and/or omissions to the architect.

All contractors must comply with all pertinent codes and by-laws.

Do not scale drawings.

This drawing may not be used for construction until signed.

Copyright reserved.

Hobin Architecture Incorporated
 63 Pamela Street
 Ottawa, Ontario
 Canada K1S 3K7
 T: 613 238 7200
 F: 613 235 2005
 E: info@hobin.com
 hobin.com

PROJECT LOCATION:
 MORLEY HOPPNER LTD.
 314 & 318 ATHLONE AVE., 2006, 2020, 2026 SCOTT ST.
 OTTAWA ON.

DRAWING TITLE:
 LEVELS 3-4

DRAWN BY: PB **DATE:** 23-10-13 **SCALE:** 1/150

PROJECT: 2026 **DRAWING NO.:**

A2.06

REVISION NO.:

PROJECT TEAM

ARCHITECT
 HOBIN ARCHITECTURE
 PATRICK BISSON
 T 613-238-7200

PLANNING
 FOTENY CONSULTANTS INC.
 ANGELO TREMBLAY
 T 613-730-5709

CIVIL
 NOVATECH
 LEE SHEETS
 T 613-254-9643 X209

LANDSCAPE ARCHITECT
 PROJECT PASSAGE
 SERGE GALLIARD
 T 614-891-5442

TRANSPORTATION
 NOVATECH
 JENNIFER LUONG
 T 613-254-9643 X254

ENVIRONMENTAL
 GRADIENT WIND ENGINEERING
 JOSHUA FOSTER
 T 613-834-0634

SURVEYOR
 STANTEC
 BRIAN WEBSTER
 T 613-229-7644

no.	date	revision
4	23-10-13	REISSUED FOR SITE PLAN CONTROL
3	23-02-22	ISSUED FOR SITE PLAN CONTROL
2	22-04-07	ISSUED FOR REZONING
1	21-06-08	CITY OF OTTAWA PRECONSULTATION

It is the responsibility of the appropriate contractor to check and verify all dimensions on site and report all errors and/or omissions to the architect.

All contractors must comply with all pertinent codes and by-laws.
 Do not scale drawings.

This drawing may not be used for construction until signed.
 Copyright reserved.

Hobin Architecture Incorporated
 63 Pamela Street
 Ottawa, Ontario
 Canada K1S 3K7
 T: 613 238 7200
 F: 613 235 2005
 E: info@hobin.com
 hobin.com

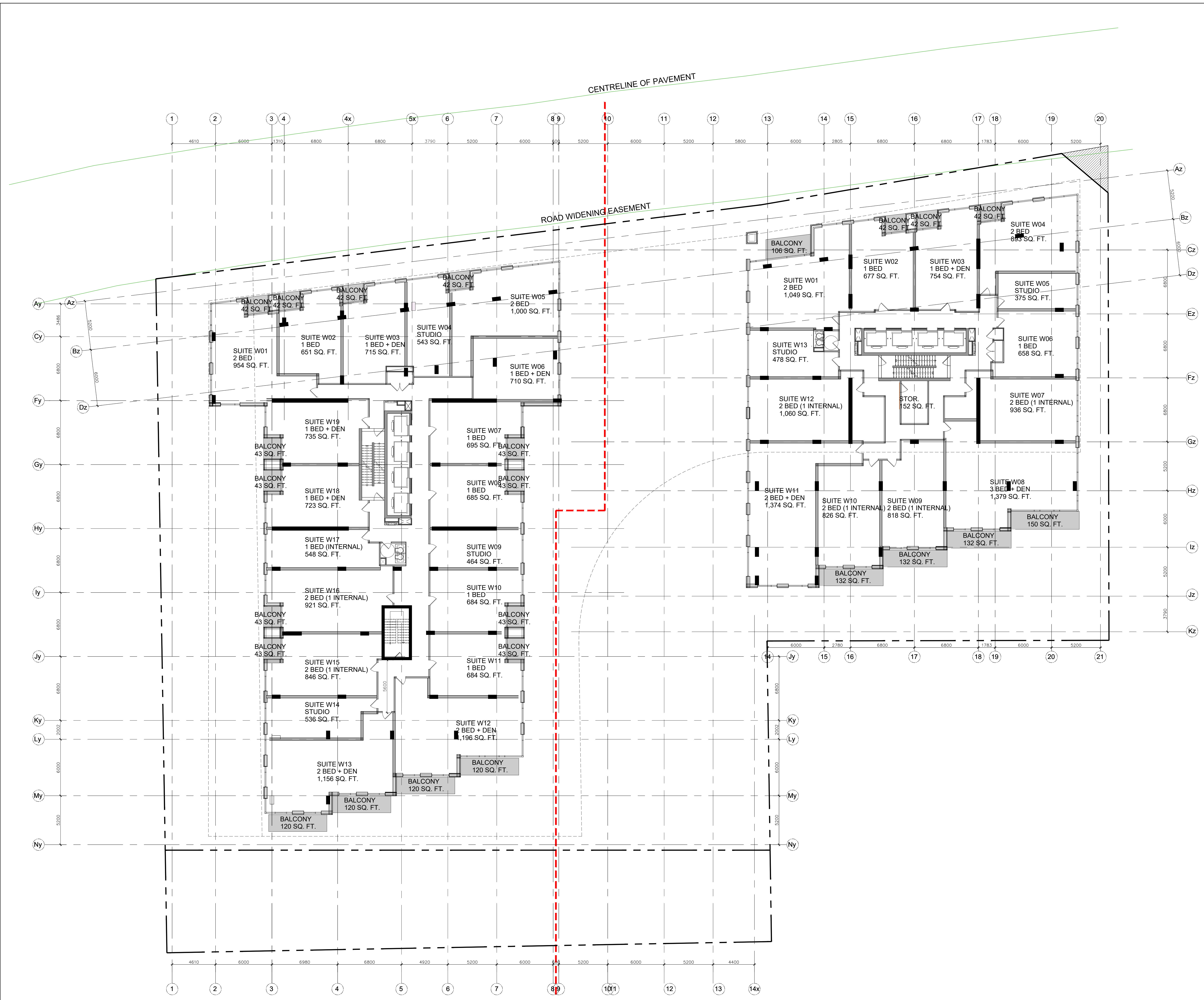
PROJECT LOCATION:
 MORLEY HOPPNER LTD.
 314 & 318 ATHLONE AVE., 2006, 2020, 2026 SCOTT ST.
 OTTAWA ON.

DRAWING TITLE:
 LEVEL 5

DRAWN BY: PB **DATE:** 23-10-13 **SCALE:** 1/150

PROJECT: 2026 **DRAWING NO.:**

A2.07
 REVISION NO.:



PROJECT TEAM

ARCHITECT
 HOBIN ARCHITECTURE
 PATRICK BISSON
 T 613-238-7200

PLANNING
 FOTENY CONSULTANTS INC.
 ANGELO TREMBLAY
 T 613-730-5709

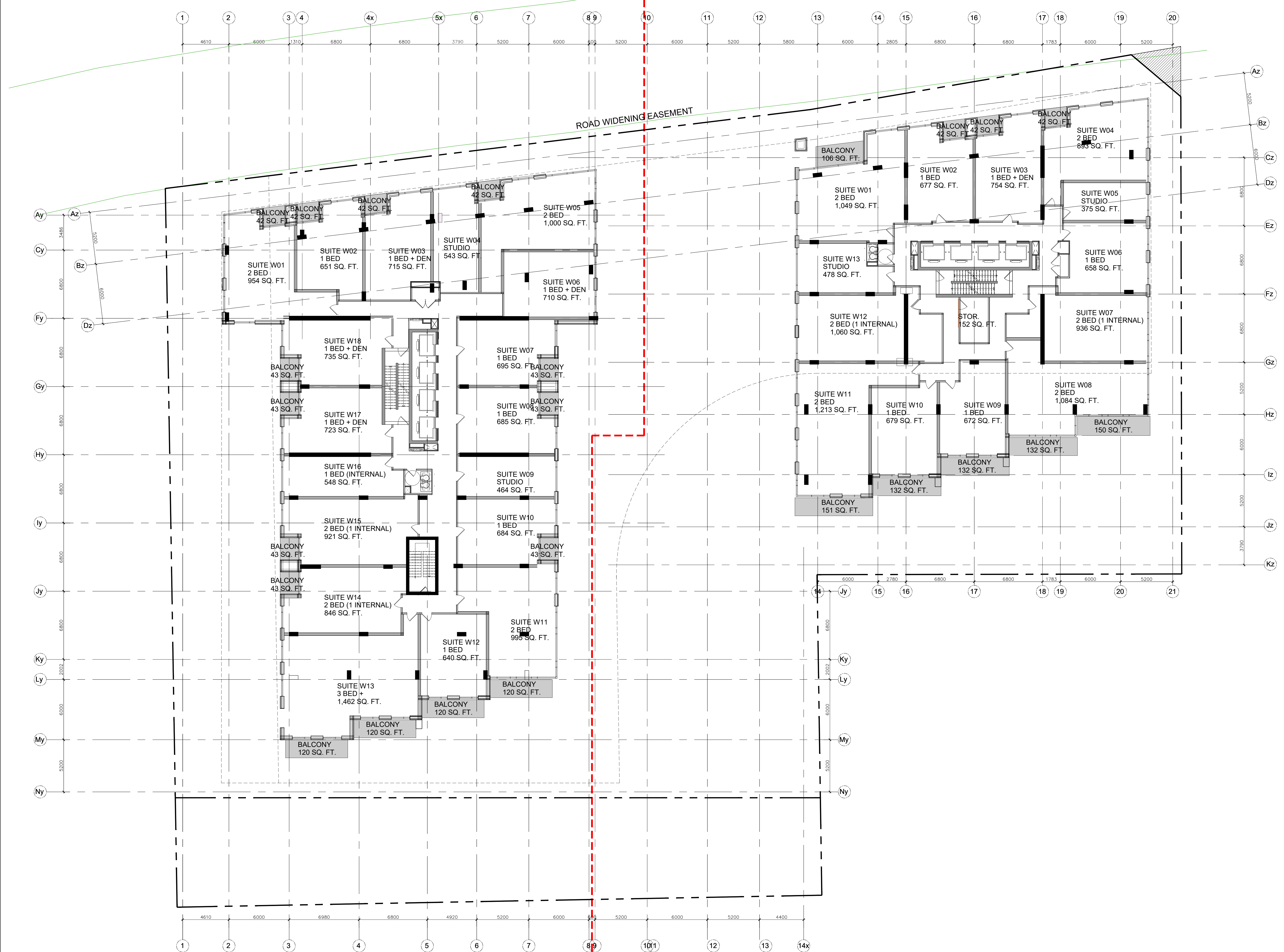
CIVIL
 NOVATECH
 LEE SHEETS
 T 613-254-9643 X209

LANDSCAPE ARCHITECT
 PROJECT PASSAGE
 SERGE GALLIARD
 T 514-891-5442

TRANSPORTATION
 NOVATECH
 JENNIFER LUCONG
 T 613-254-9643 X254

ENVIRONMENTAL
 GRADIENT WIND ENGINEERING
 JOSHUA FOSTER
 T 613-834-0634

SURVEYOR
 STANTEC
 BRIAN WEBSTER
 T 613-229-7444



no.	date	revision
4	23-10-13	REISSUED FOR SITE PLAN CONTROL
3	23-10-12	ISSUED FOR SITE PLAN CONTROL
2	22-04-07	ISSUED FOR REZONING
1	21-06-08	CITY OF OTTAWA PRECONSULTATION

It is the responsibility of the appropriate contractor to check and verify all dimensions on site and report all errors and/or omissions to the architect.

All contractors must comply with all pertinent codes and by-laws.

Do not scale drawings.

This drawing may not be used for construction until signed.

Copyright reserved.

Hobin Architecture Incorporated
 63 Pamela Street
 Ottawa, Ontario
 Canada K1S 3K7
 T: 613 238 7200
 F: 613 235 2005
 E: info@hobin.com
 hobin.com

PROJECT LOCATION:
 MORLEY HOPPNER LTD.
 314 & 318 ATHLONE AVE., 2006, 2020, 2026 SCOTT ST.
 OTTAWA ON.

DRAWING TITLE:
 LEVEL 6

DRAWN BY: PB **DATE:** 23-10-13 **SCALE:** 1/150

PROJECT: 2026 **DRAWING NO.:**

A2.08

REVISION NO.:

PROJECT TEAM

ARCHITECT
HOBIN ARCHITECTURE
PATRICK BISSON
T 613-238-7200

PLANNING
FOTENY CONSULTANTS INC.
ANGEL TREMBLAY
T 613-730-5709

CIVIL
NOVATECH
LEE SHEETS
T 613-254-9643 X209

LANDSCAPE ARCHITECT
PROJECT PASSAGE
SERGE GALLAN
T 614-891-5442

TRANSPORTATION
NOVATECH
JENNIFER LUCING
T 613-254-9643 X254

ENVIRONMENTAL
GRADIENT WIND ENGINEERING
JOSHUA FOSTER
T 613-834-0634

SURVEYOR
STANTEC
BRIAN WEBSTER
T 613-229-7444

no.	date	revision
4	23-10-13	REISSUED FOR SITE PLAN CONTROL
3	23-02-22	ISSUED FOR SITE PLAN CONTROL
2	22-04-07	ISSUED FOR REZONING
1	21-06-08	CITY OF OTTAWA PRECONSULTATION

It is the responsibility of the appropriate contractor to check and verify all dimensions on site and report all errors and/or omissions to the architect.

All contractors must comply with all pertinent codes and by-laws.

Do not scale drawings.

This drawing may not be used for construction until signed.

Copyright reserved.

Hobin Architecture Incorporated
63 Pamela Street
Ottawa, Ontario
Canada K1S 3K7
T: 613 238 7200
F: 613 235 2005
E: info@hobin.com
hobin.com

PROJECT LOCATION:
MORLEY HOPPNER LTD.
314 & 318 ATHLONE AVE., 2006, 2020, 2026 SCOTT ST.
OTTAWA ON.

DRAWING TITLE:
LEVEL 7

DRAWN BY: PB **DATE:** 23-10-13 **SCALE:** 1/150

PROJECT: 2026 **DRAWING NO.:**

A2.09
REVISION NO.:



PROJECT TEAM

ARCHITECT
 HOBIN ARCHITECTURE
 PATRICK BISSON
 T 613-238-7200

PLANNING
 FOTENY CONSULTANTS INC.
 ANTOINETTE TREMBLAY
 T 613-730-5709

CIVIL
 NOVATECH
 LEE SHEETS
 T 613-254-9643 X209

LANDSCAPE ARCHITECT
 PROJECT PASSAGE
 SERGE GALLIARD
 T 514-889-5442

TRANSPORTATION
 NOVATECH
 JENNIFER LUCING
 T 613-254-9643 X254

ENVIRONMENTAL
 GRADIENT WIND ENGINEERING
 JOSHUA FOSTER
 T 613-834-0634

SURVEYOR
 STANTEC
 BRIAN WEBSTER
 T 613-229-7444

no.	date	revision
4	23-10-13	REISSUED FOR SITE PLAN CONTROL
3	23-02-22	ISSUED FOR SITE PLAN CONTROL
2	22-04-07	ISSUED FOR REZONING
1	21-06-08	CITY OF OTTAWA PRECONSULTATION

It is the responsibility of the appropriate contractor to check and verify all dimensions on site and report all errors and/or omissions to the architect.

All contractors must comply with all pertinent codes and by-laws.

Do not scale drawings.

This drawing may not be used for construction until signed.

Copyright reserved.

Hobin Architecture Incorporated
 63 Pamela Street
 Ottawa, Ontario
 Canada K1S 3K7
 T: 613 238 7200
 F: 613 235 2005
 E: info@hobin.com
 hobin.com

PROJECT LOCATION:
 MORLEY HOPPNER LTD.
 314 & 318 ATHLONE AVE., 2006, 2020, 2026 SCOTT ST.
 OTTAWA ON.

DRAWING TITLE:
 LEVEL 8

DRAWN BY: DATE: SCALE:
 PB 23-10-13 1/150

PROJECT:
 2026

DRAWING NO.:
 A2.10

3049 LICENCE



PROJECT TEAM

ARCHITECT
 HOBIN ARCHITECTURE
 PATRICK BISSON
 T 613-238-7200

PLANNING
 FOTENY CONSULTANTS INC.
 ANGELO TREMBLAY
 T 613-730-5709

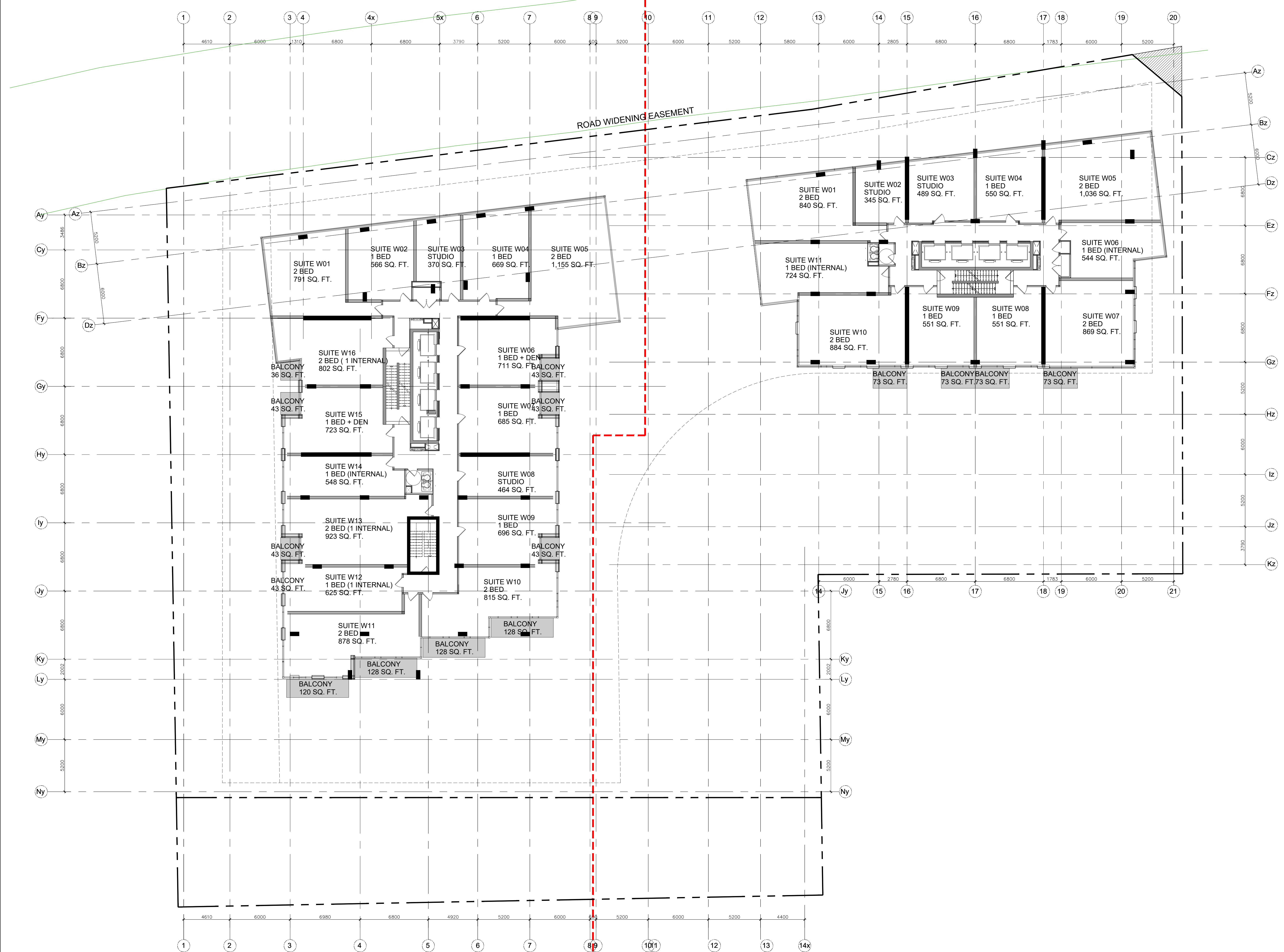
CIVIL
 NOVATECH
 LEE SHEETS
 T 613-254-9643 X209

LANDSCAPE ARCHITECT
 PROJECT PASSAGE
 SERGE GALLIARD
 T 514-891-5442

TRANSPORTATION
 NOVATECH
 JENNIFER LUCING
 T 613-254-9643 X254

ENVIRONMENTAL
 GRADIENT WIND ENGINEERING
 JOSHUA FOSTER
 T 613-834-0634

SURVEYOR
 STANTEC
 BRIAN WEBSTER
 T 613-229-7444



no.	date	revision
4	23-10-13	REISSUED FOR SITE PLAN CONTROL
3	23-02-22	ISSUED FOR SITE PLAN CONTROL
2	22-04-07	ISSUED FOR REZONING
1	21-06-08	CITY OF OTTAWA PRECONSULTATION

It is the responsibility of the appropriate contractor to check and verify all dimensions on site and report all errors and/or omissions to the architect.

All contractors must comply with all pertinent codes and by-laws.

Do not scale drawings.

This drawing may not be used for construction until signed.

Copyright reserved.

Hobin Architecture Incorporated
 63 Pamela Street
 Ottawa, Ontario
 Canada K1S 3K7
 T: 613 238 7200
 F: 613 235 2005
 E: mail@hobinarc.com
 hobinarc.com

PROJECT LOCATION:
 MORLEY HOPPNER LTD.
 314 & 318 ATHLONE AVE., 2006, 2020, 2026 SCOTT ST.
 OTTAWA ON.

DRAWING TITLE:
 LEVEL 9

DRAWN BY: PB **DATE:** 23-10-13 **SCALE:** 1/150

PROJECT: 2026 **DRAWING NO.:**

A2.11
 REVISION NO.:

PROJECT TEAM

ARCHITECT
 HOBIN ARCHITECTURE
 PATRICK BISSON
 T 613-238-7200

PLANNING
 FOTENY CONSULTANTS INC.
 ANGELO TREMBLAY
 T 613-730-5709

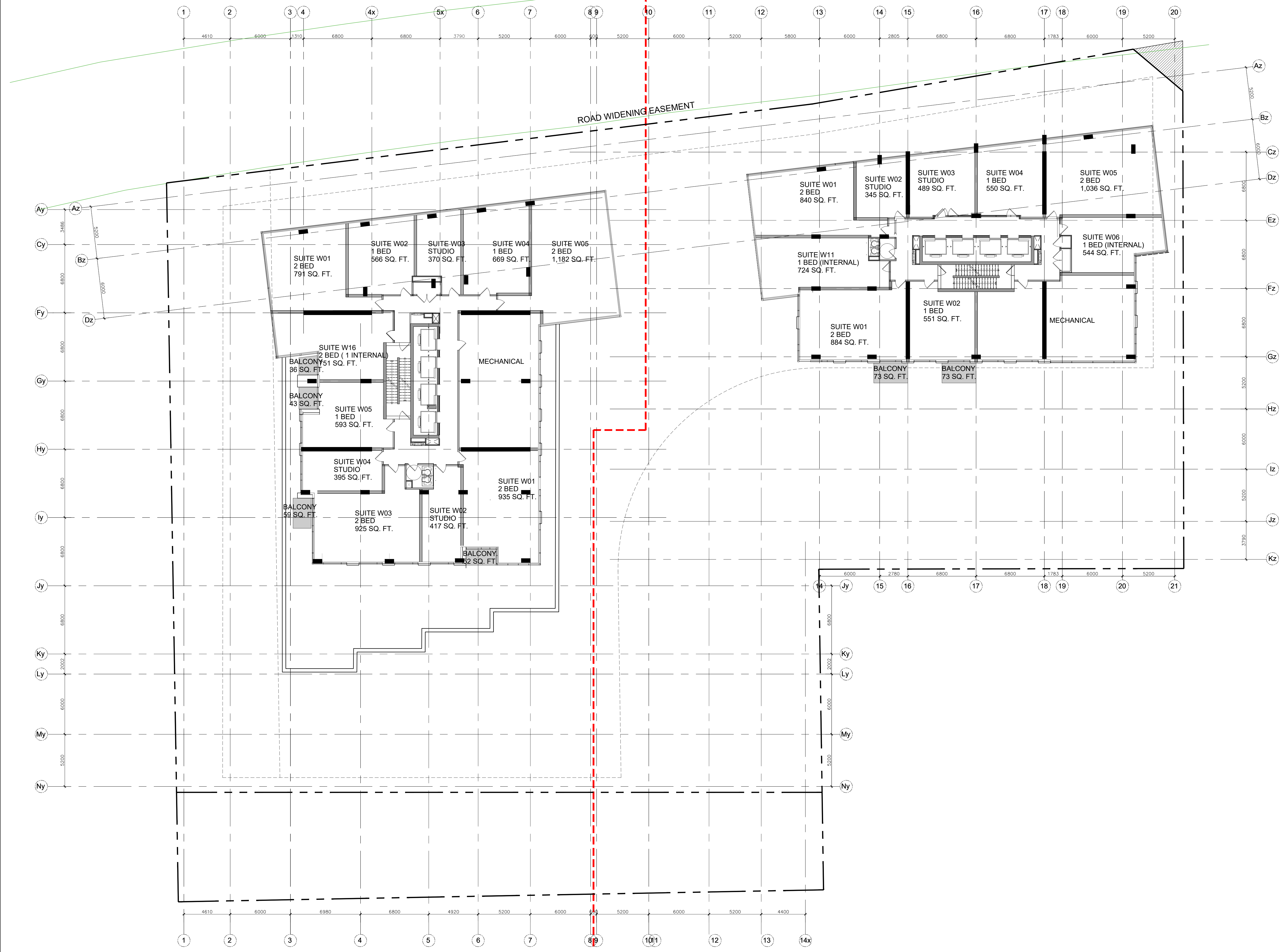
CIVIL
 NOVATECH
 LEE SHEETS
 T 613-254-9643 X209

LANDSCAPE ARCHITECT
 PROJECT PASSAGE
 SERGE GALLIARD
 T 514-891-5442

TRANSPORTATION
 NOVATECH
 JENNIFER LUONG
 T 613-254-9643 X254

ENVIRONMENTAL
 GRADIENT WIND ENGINEERING
 JOSHUA FOSTER
 T 613-834-0634

SURVEYOR
 STANTEC
 BRIAN WEBSTER
 T 613-229-7444



no.	date	revision
4	23-10-13	REISSUED FOR SITE PLAN CONTROL
3	23-02-22	ISSUED FOR SITE PLAN CONTROL
2	22-04-07	ISSUED FOR REZONING
1	21-06-08	CITY OF OTTAWA PRECONSULTATION

It is the responsibility of the appropriate contractor to check and verify all dimensions on site and report all errors and/or omissions to the architect.

All contractors must comply with all pertinent codes and by-laws.

Do not scale drawings.

This drawing may not be used for construction until signed.

Copyright reserved.

Hobin Architecture Incorporated
 63 Pamela Street
 Ottawa, Ontario
 Canada K1S 3K7
 T: 613 238 7200
 F: 613 235 2005
 E: mail@hobinarc.com
 hobinarc.com

PROJECT LOCATION:
 MORLEY HOPPNER LTD.
 314 & 318 ATHLONE AVE., 2006, 2020, 2026 SCOTT ST.
 OTTAWA ON.

DRAWING TITLE:
 LEVEL 10

DRAWN BY: PB **DATE:** 23-10-13 **SCALE:** 1/150

PROJECT: 2026 **DRAWING NO.:**

A2.12

REVISION NO.:

PROJECT TEAM

ARCHITECT
 HOBIN ARCHITECTURE
 PATRICK BISSON
 T 613-238-7200

PLANNING
 FOTENY CONSULTANTS INC.
 ANTOINETTE TREMBLAY
 T 613-730-5709

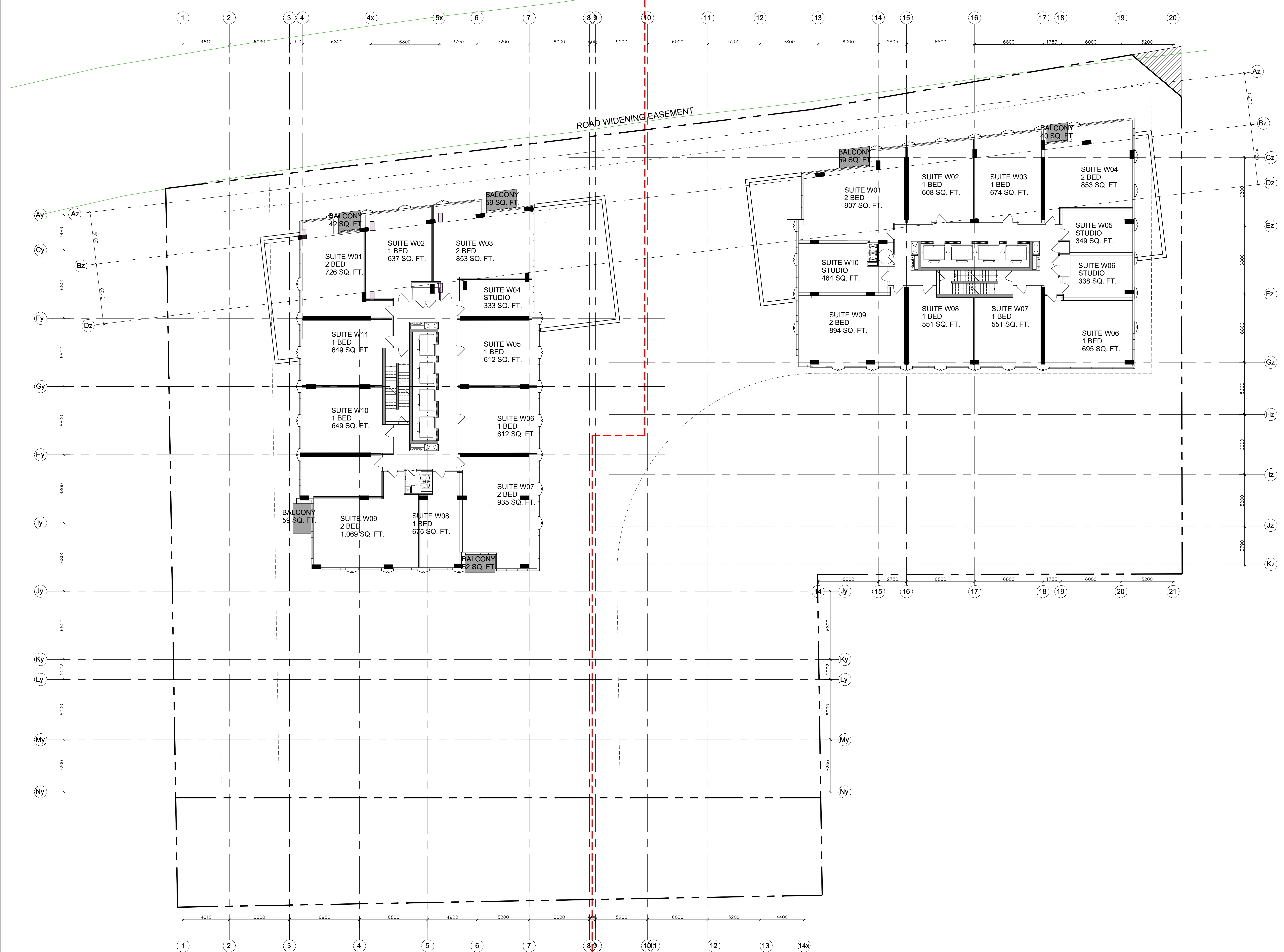
CIVIL
 NOVATECH
 LEE SHEETS
 T 613-254-9643 X209

LANDSCAPE ARCHITECT
 PROJECT PAVAGE
 SERGE GALLIARD
 T 514-891-5442

TRANSPORTATION
 NOVATECH
 JENNIFER LUCING
 T 613-254-9643 X254

ENVIRONMENTAL
 GRADIENT WIND ENGINEERING
 JOSHUA FOSTER
 T 613-834-0634

SURVEYOR
 STANTEC
 BRIAN WEBSTER
 T 613-229-7444



no.	date	revision
4	23-10-13	REISSUED FOR SITE PLAN CONTROL
3	23-02-22	ISSUED FOR SITE PLAN CONTROL
2	20-04-07	ISSUED FOR REZONING
1	21-06-08	CITY OF OTTAWA PRECONSULTATION

It is the responsibility of the appropriate contractor to check and verify all dimensions on site and report all errors and/or omissions to the architect.

All contractors must comply with all pertinent codes and by-laws.

Do not scale drawings.

This drawing may not be used for construction until signed.

Copyright reserved.

Hobin Architecture Incorporated
 63 Pamela Street
 Ottawa, Ontario
 Canada K1S 3K7
 T: 613 238 7200
 F: 613 235 2005
 E: mail@hobin.com
 hobin.com

PROJECT LOCATION:
 MORLEY HOPPNER LTD.
 314 & 318 ATHLONE AVE., 2006, 2020, 2026 SCOTT ST.
 OTTAWA ON.

DRAWING TITLE:
 LEVELS 11

DRAWN BY: PB **DATE:** 23-10-13 **SCALE:** 1/150

PROJECT: 2026 **DRAWING NO.:**

A2.13

REVISION NO.:

PROJECT TEAM

ARCHITECT
 HOBIN ARCHITECTURE
 PATRICK BISSON
 T 613-238-7200

PLANNING
 FOTENY CONSULTANTS INC.
 ANTOINETTE TREMBLAY
 T 613-730-5709

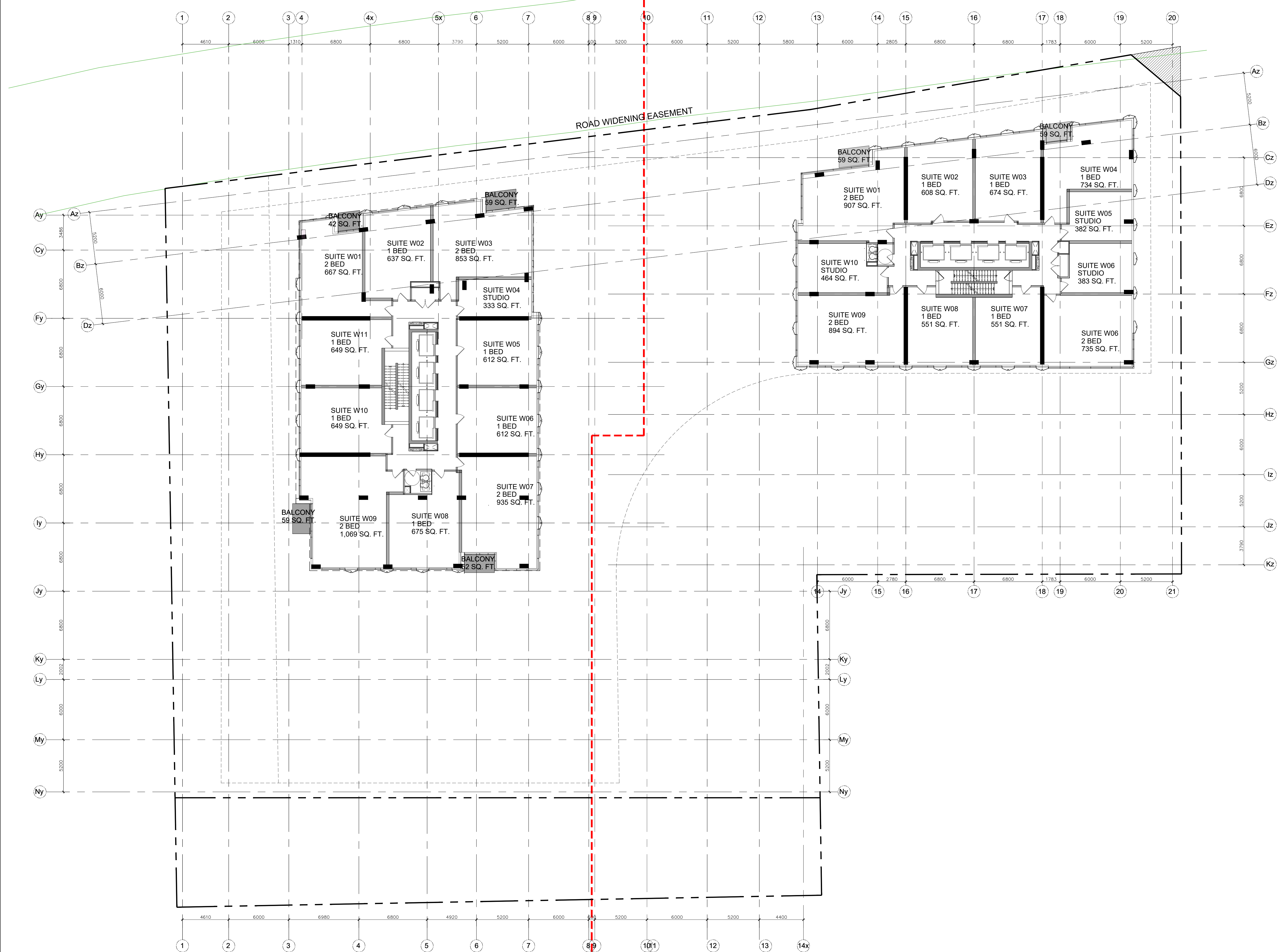
CIVIL
 NOVATECH
 LEE SHEETS
 T 613-254-9643 X209

LANDSCAPE ARCHITECT
 PROJECT PASSAGE
 SERGE GALLIARD
 T 514-891-5442

TRANSPORTATION
 NOVATECH
 JENNIFER LUONG
 T 613-254-9643 X254

ENVIRONMENTAL
 GRADIENT WIND ENGINEERING
 JOSHUA FOSTER
 T 613-834-0634

SURVEYOR
 STANTEC
 BRIAN WEBSTER
 T 613-229-7444



no.	date	revision
4	23-10-13	REISSUED FOR SITE PLAN CONTROL
3	23-02-22	ISSUED FOR SITE PLAN CONTROL
2	22-04-07	ISSUED FOR REZONING
1	21-06-08	CITY OF OTTAWA PRECONSULTATION

It is the responsibility of the appropriate contractor to check and verify all dimensions on site and report all errors and/or omissions to the architect.

All contractors must comply with all pertinent codes and by-laws.

Do not scale drawings.

This drawing may not be used for construction until signed.

Copyright reserved.

Hobin Architecture Incorporated
 63 Pamela Street
 Ottawa, Ontario
 Canada K1S 3K7
 T: 613 238 7200
 F: 613 235 2005
 E: mail@hobinarc.com
 hobinarc.com

PROJECT LOCATION:
 MORLEY HOPPNER LTD.
 314 & 318 ATHLONE AVE., 2006, 2020, 2026 SCOTT ST.
 OTTAWA ON.

DRAWING TITLE:
 LEVELS 12-38

DRAWN BY: PB **DATE:** 23-10-13 **SCALE:** 1/150

PROJECT: 2026 **DRAWING NO.:**

A2.14

REVISION NO.:

PROJECT TEAM

ARCHITECT
 HOBIN ARCHITECTURE
 PATRICK BISSON
 T 613-238-7200

PLANNING
 FOTENY CONSULTANTS INC.
 ANTOINETTE TREMBLAY
 T 613-730-5709

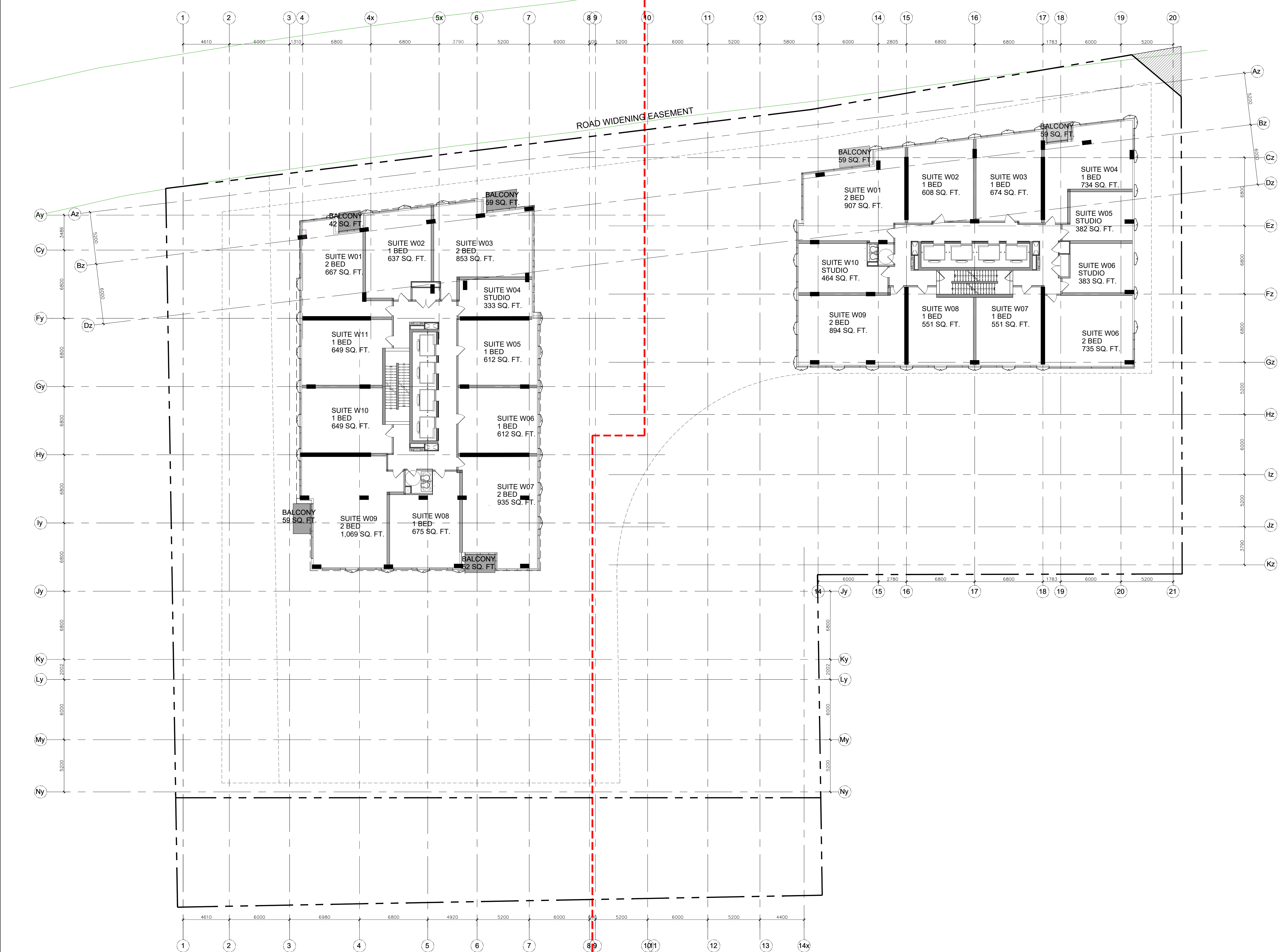
CIVIL
 NOVATECH
 LEE SHEETS
 T 613-254-9643 X209

LANDSCAPE ARCHITECT
 PROJECT PASSAGE
 SERGE GALLANZ
 T 514-891-5442

TRANSPORTATION
 NOVATECH
 JENNIFER LUONG
 T 613-254-9643 X254

ENVIRONMENTAL
 GRADIENT WIND ENGINEERING
 JOSHUA FOSTER
 T 613-834-0634

SURVEYOR
 STANTEC
 BRIAN WEBSTER
 T 613-229-7644



no.	date	revision
4	23-10-13	REISSUED FOR SITE PLAN CONTROL
3	23-02-22	ISSUED FOR SITE PLAN CONTROL
2	23-04-07	ISSUED FOR REZONING
1	21-06-08	CITY OF OTTAWA PRECONSULTATION

It is the responsibility of the appropriate contractor to check and verify all dimensions on site and report all errors and/or omissions to the architect.

All contractors must comply with all pertinent codes and by-laws.

Do not scale drawings.

This drawing may not be used for construction until signed.

Copyright reserved.

Hobin Architecture Incorporated
 63 Pamela Street
 Ottawa, Ontario
 Canada K1S 3K7
 T: 613 238 7200
 F: 613 235 2005
 E: mail@hobinarc.com
 hobinarc.com

PROJECT LOCATION:
 MORLEY HOPPNER LTD.
 314 & 318 ATHLONE AVE., 2006, 2020, 2026 SCOTT ST.
 OTTAWA ON.

DRAWING TITLE:
 LEVEL 39-40

DRAWN BY: PB **DATE:** 23-10-13 **SCALE:** 1/150

PROJECT: 2026 **DRAWING NO.:**

A2.15

REVISION NO.:

PROJECT TEAM

ARCHITECT
 HOBIN ARCHITECTURE
 PATRICK BISSON
 T 613-238-7200

PLANNING
 FOTENY CONSULTANTS INC.
 ANGELO TREMBLAY
 T 613-730-5709

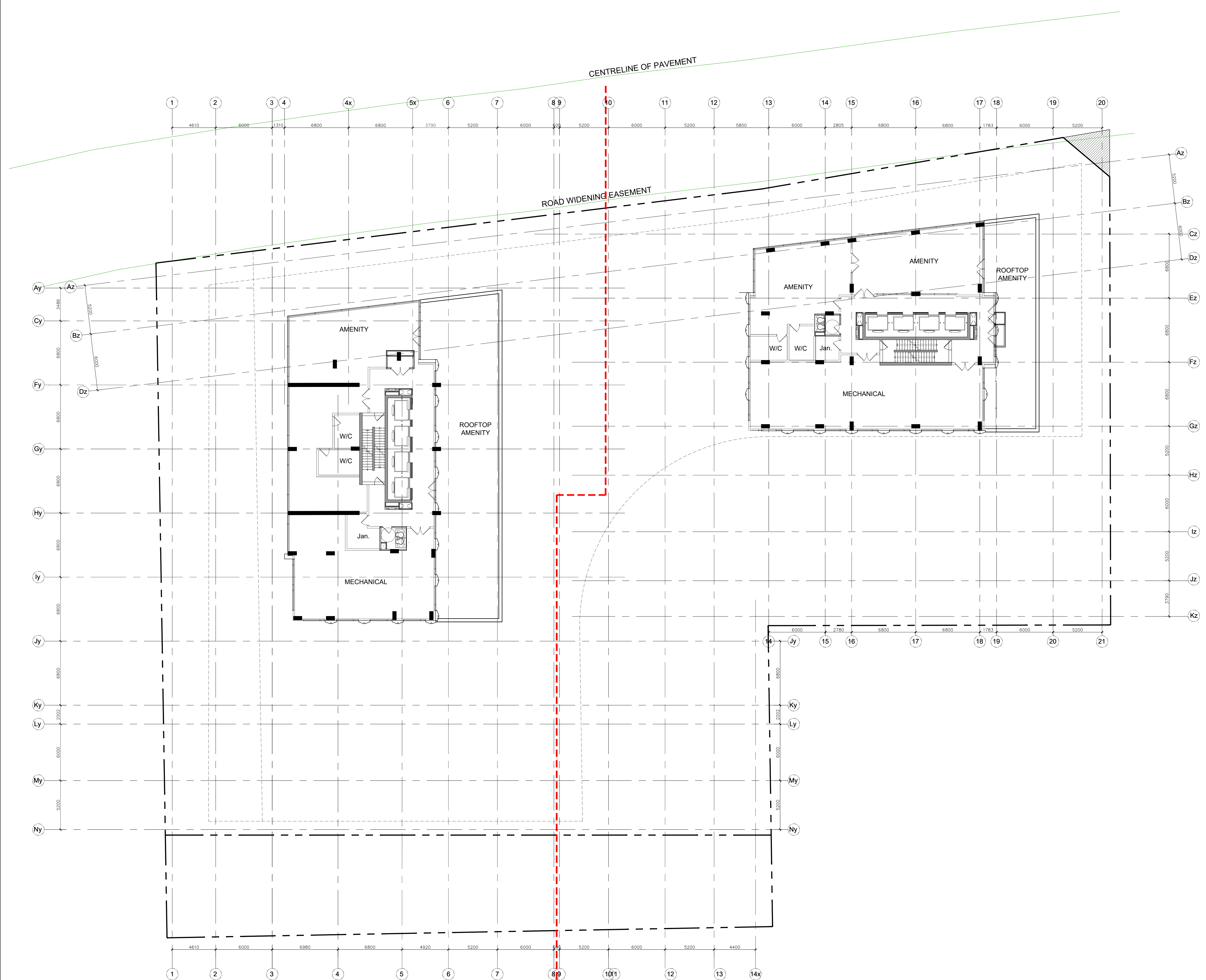
CIVIL
 NOVATECH
 T 613-254-9643 X209

LANDSCAPE ARCHITECT
 PROJECT PAVAGE
 SERGE GALLANZ
 T 514-891-5442

TRANSPORTATION
 NOVATECH
 JENNIFER LUONG
 T 613-254-9643 X254

ENVIRONMENTAL
 GRADIENT WIND ENGINEERING
 JOSHUA FOSTER
 T 613-834-0634

SURVEYOR
 STANTEC
 BRIAN WEBSTER
 T 613-229-7444



no.	date	revision
4	23-10-13	REISSUED FOR SITE PLAN CONTROL
3	23-02-22	ISSUED FOR SITE PLAN CONTROL
2	23-04-07	ISSUED FOR REZONING
1	21-06-08	CITY OF OTTAWA PRECONSULTATION

It is the responsibility of the appropriate contractor to check and verify all dimensions on site and report all errors and/or omissions to the architect.

All contractors must comply with all pertinent codes and by-laws. Do not scale drawings.

This drawing may not be used for construction until signed. Copyright reserved.

Hobin Architecture Incorporated
 63 Pamela Street
 Ottawa, Ontario
 Canada K1S 3K7
 T: 613 238 7200
 F: 613 235 2005
 E: mail@hobinarc.com
 hobinarc.com

PROJECT/LOCATION:
 MORLEY HOPPNER LTD.
 314 & 318 ATHLONE AVE., 2006,2020, 2026 SCOTT ST.
 OTTAWA ON.

DRAWING TITLE:
 LEVEL 41

DRAWN BY: PB **DATE:** 23-10-13 **SCALE:** 1:150

PROJECT: 2026 **DRAWING NO.:**

A2.16
 REVISION NO.: