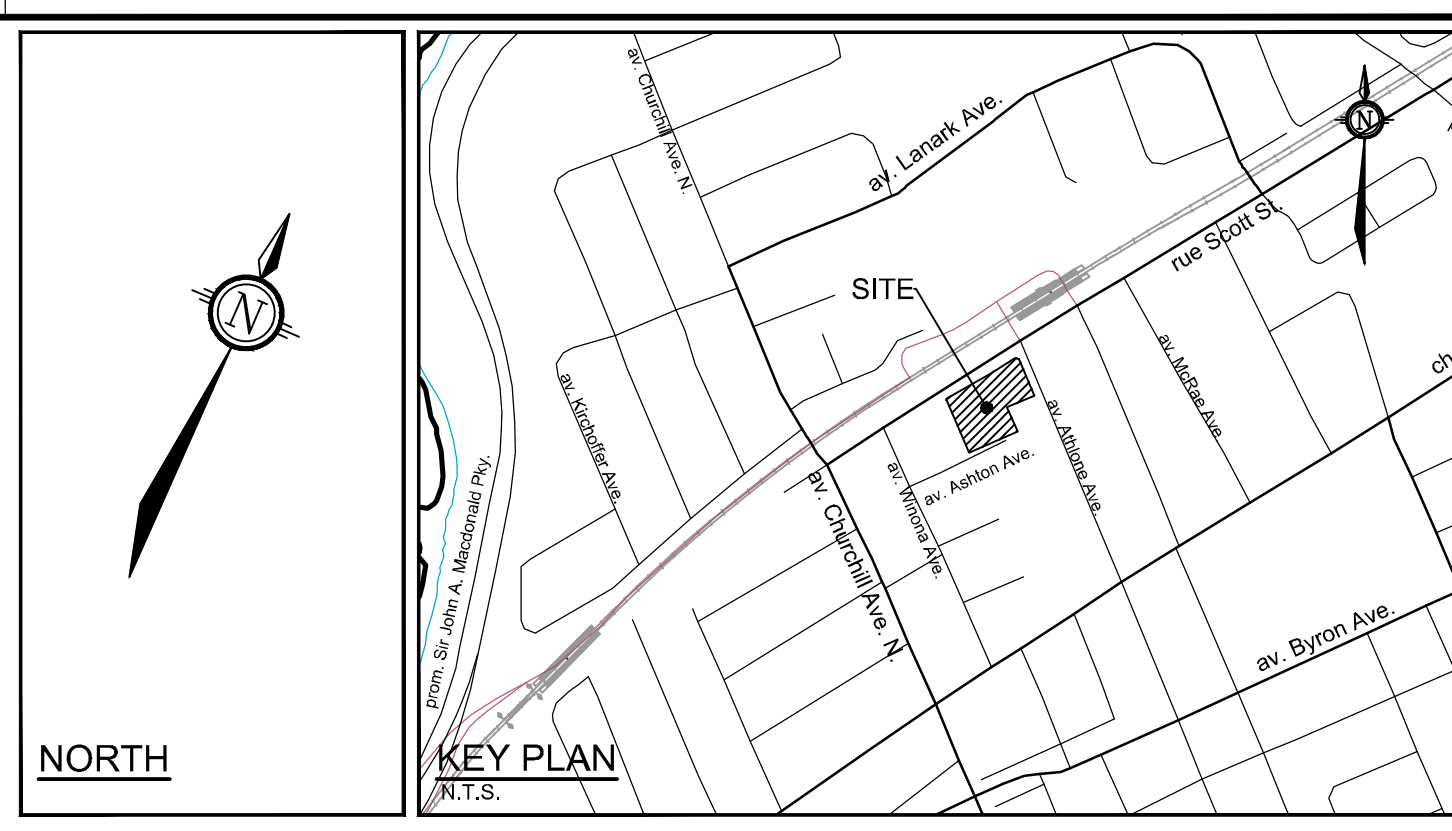


CONTRACTOR TO ESTABLISH ANOTHER BENCHMARK AS THE FIRE HYDRANT IS BEING RELOCATED



**LEGEND**

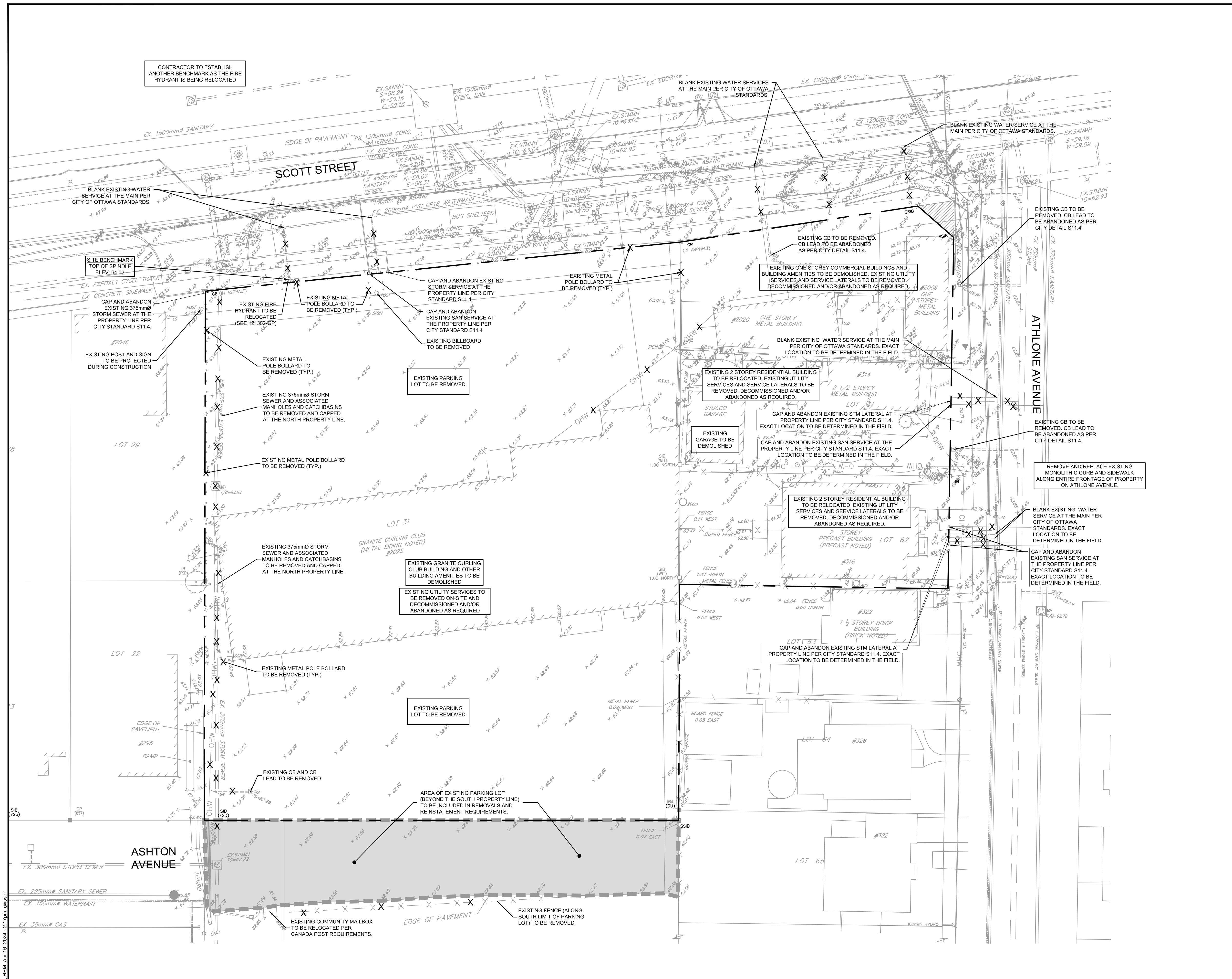
- REMOVALS**
- X EXISTING CONCRETE CURB
  - V&V EXISTING VALVE & VALVE BOX
  - SP EXISTING SERVICE POST
  - HYD EXISTING HYDRANT
  - CBMH EXISTING CATCHBASIN
  - CB EXISTING CATCHBASIN/H
  - EX UP EXISTING UTILITY POLE
  - CW GUY WIRES
  - EXISTING TREES/VEGETATION

**GENERAL NOTES:**

- COORDINATE AND SCHEDULE ALL WORK WITH OTHER TRADES AND CONTRACTORS.
- DETERMINE THE EXACT LOCATION, SIZE, MATERIAL AND ELEVATION OF ALL EXISTING UTILITIES PRIOR TO COMMENCING CONSTRUCTION. PROTECT AND ASSUME RESPONSIBILITY FOR ALL EXISTING UTILITIES WHETHER OR NOT SHOWN ON THIS DRAWING.
- ALL ELEVATIONS ARE GEODETIC.

**BENCHMARK NOTES:**

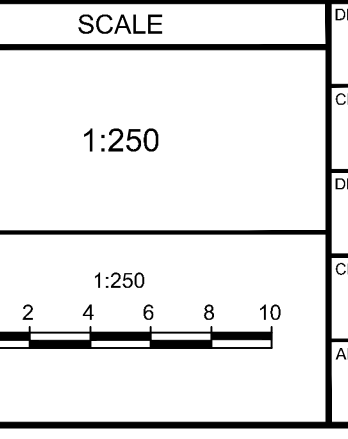
- ELEVATIONS SHOWN ARE GEODETIC AND ARE REFERRED TO THE CGVD28 GEODETIC DATUM. DERIVED ARE DERIVED FROM A SITE BENCHMARK AS SHOWN ON P6 HAVING AN ELEVATION OF 64.02.
- IT IS THE RESPONSIBILITY OF THE USER OF THIS INFORMATION TO VERIFY THAT THE JOB BENCHMARK HAS NOT BEEN ALTERED OR DISTURBED AND THAT ITS RELATIVE ELEVATION AND DESCRIPTION AGREES WITH THE INFORMATION SHOWN ON THIS DRAWING.
- BENCHMARK WAS PROVIDED ON PLAN OF SURVEY OF PART OF LOT 60 AND ALL OF LOTS 61 & 62, REGISTERED PLAN 263 AND PART OF LOT 31, CONCESSION 1 (OTTAWA FRONT), SURVEYED BY STANTEC GEOMATICS LTD.
- NEW BENCHMARK TO BE ESTABLISHED BY SURVEYOR PRIOR TO CONSTRUCTION TO REPLACE EXISTING BENCHMARK ON FIRE HYDRANT THAT WILL BE RELOCATED.



NOTE:  
THE POSITION OF ALL POLE LINES, CONDUITS, WATERMANS, SEWERS AND OTHER UNDERGROUND AND OVERGROUND UTILITIES AND STRUCTURES IS NOT NECESSARILY SHOWN ON THE CONTRACT DRAWINGS, AND WHERE SHOWN, THE ACCURACY OF THE POSITION OF SUCH UTILITIES AND STRUCTURES IS NOT GUARANTEED. BEFORE STARTING WORK, DETERMINE THE EXACT LOCATION OF ALL SUCH UTILITIES AND STRUCTURES AND ASSUME ALL LIABILITY FOR DAMAGE TO THEM.

**OWNER INFORMATION**  
HOPPNER HOLDINGS INC.  
1818 BRADLEY SIDE ROAD,  
CARP, ONTARIO K0A 1L0  
KEN HOPPNER  
PHONE: 613-831-5490  
khoppner@morleyhoppner.com

No.	REVISION	DATE	BY
4.	REVISED PER CITY COMMENTS	APR 16/24	FST
3.	REVISED PER CITY COMMENTS	MAR 9/24	FST
2.	REVISED PER CITY COMMENTS	OCT 16/23	FST
1.	ISSUED FOR SPC APPLICATION	FEB 22/23	FST



DESIGN	CV
CHECKED	FST
DRAWN	CV
CHECKED	FST
APPROVED	FST

**FOR REVIEW ONLY**

**NOVATECH**  
Engineers, Planners & Landscape Architects  
Suite 200, 240 Michael Cowpland Drive  
Ottawa, Ontario, Canada K2M 1P6  
Telephone (613) 254-9643  
Facsimile (613) 254-5867  
Website www.novatech-eng.com

LOCATION  
CITY OF OTTAWA  
2026 SCOTT STREET

DRAWING NAME  
**EXISTING CONDITIONS AND REMOVALS PLAN**

PROJECT No. 121302  
REV 4  
DRAWING No. 121302-REM  
PLAN #18976

D07-12-23-0019