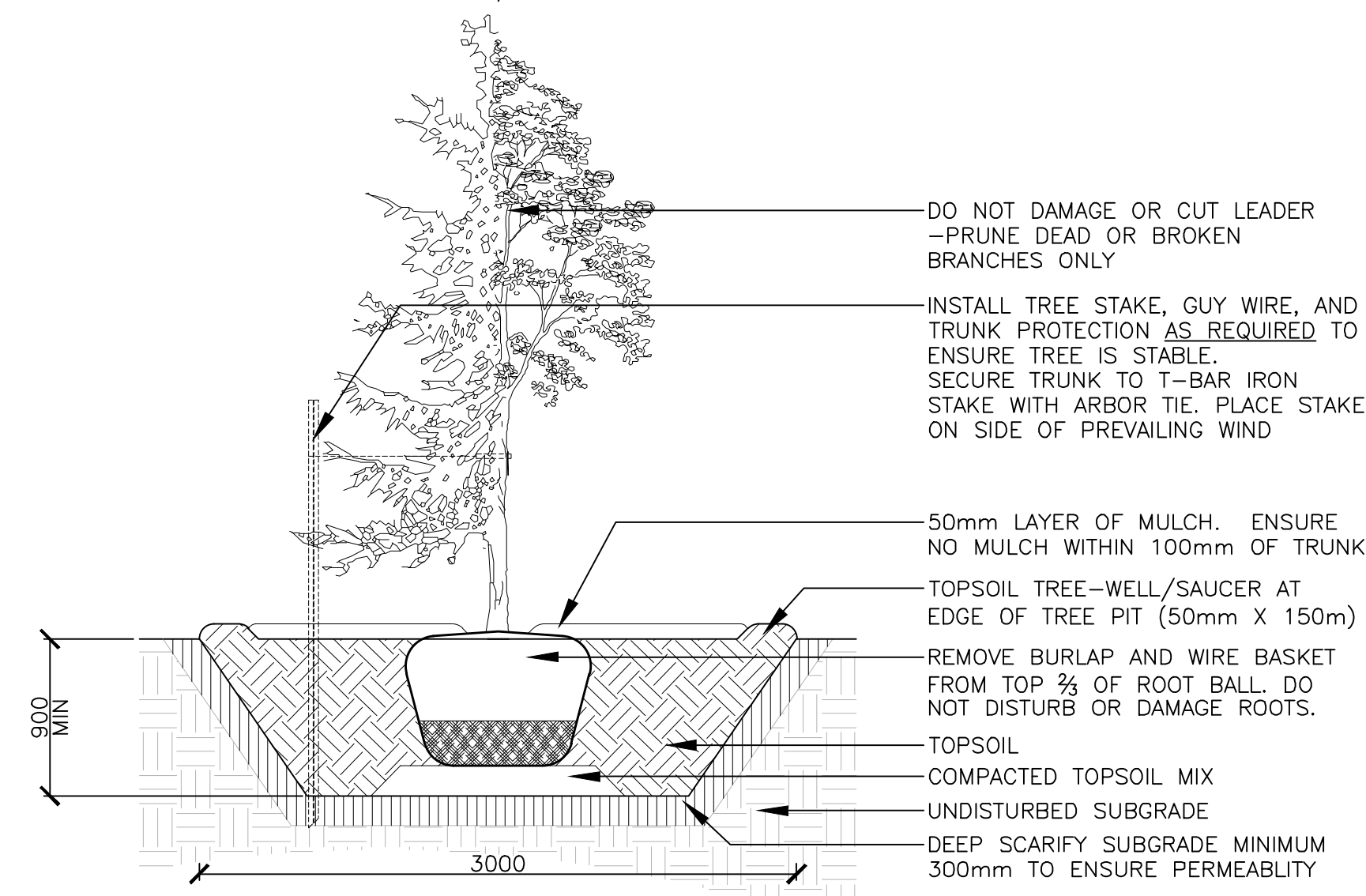


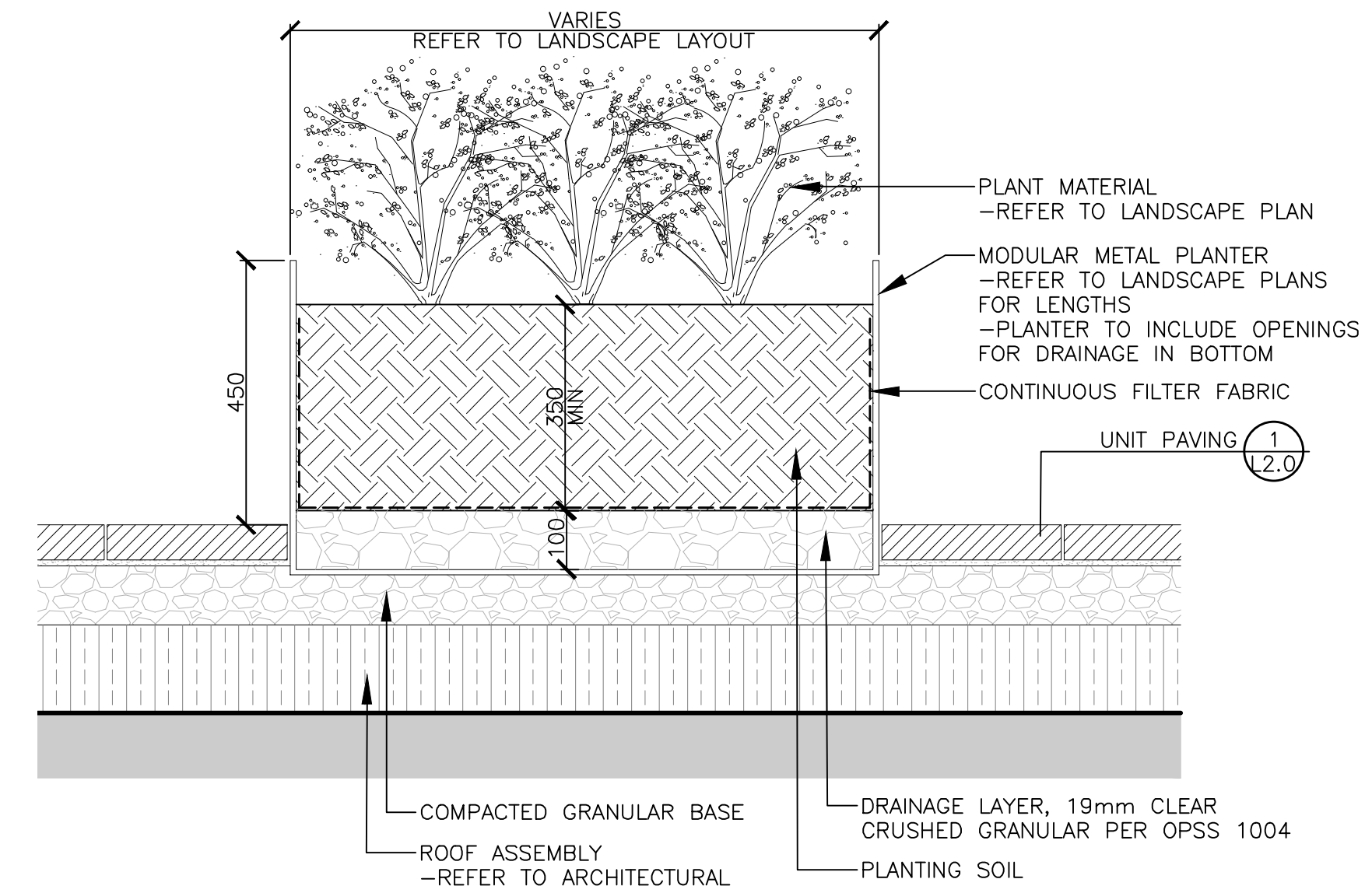
NOTES:
 • TOP OF ROOT BALL TO RETAIN SAME ELEVATION AS GROWING CONDITIONS

1 SHRUB PLANTING 1:30



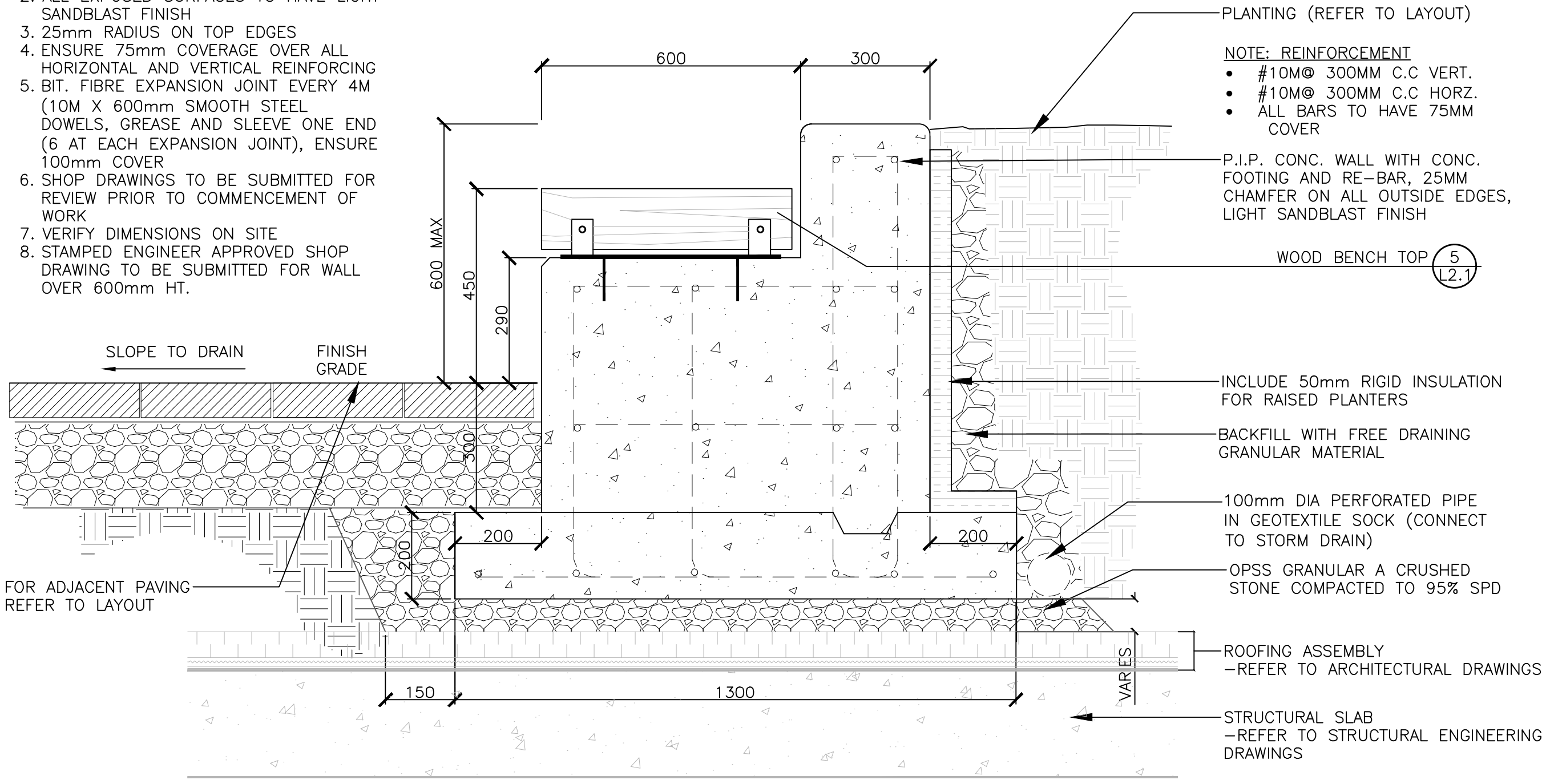
NOTES:
 • TREE STAKES ARE GENERALLY ARE TO BE USED FOR CONDITIONS WHERE THE INSTALLED TREE IS UNSTABLE AND/OR BECOMES UNSTABLE
 • ALLOW 10mm TO 25mm SLACK ON GUY WIRE SUPPORT FOR TREE
 • TOP OF ROOT BALL TO RETAIN SAME ELEVATION AS GROWING CONDITIONS
 • REMOVE STAKES ONE YEAR AFTER INSTALL
 • INSTALL STAKE BEYOND EDGE OF ROOT BALL

2 TREE PLANTING 1:30

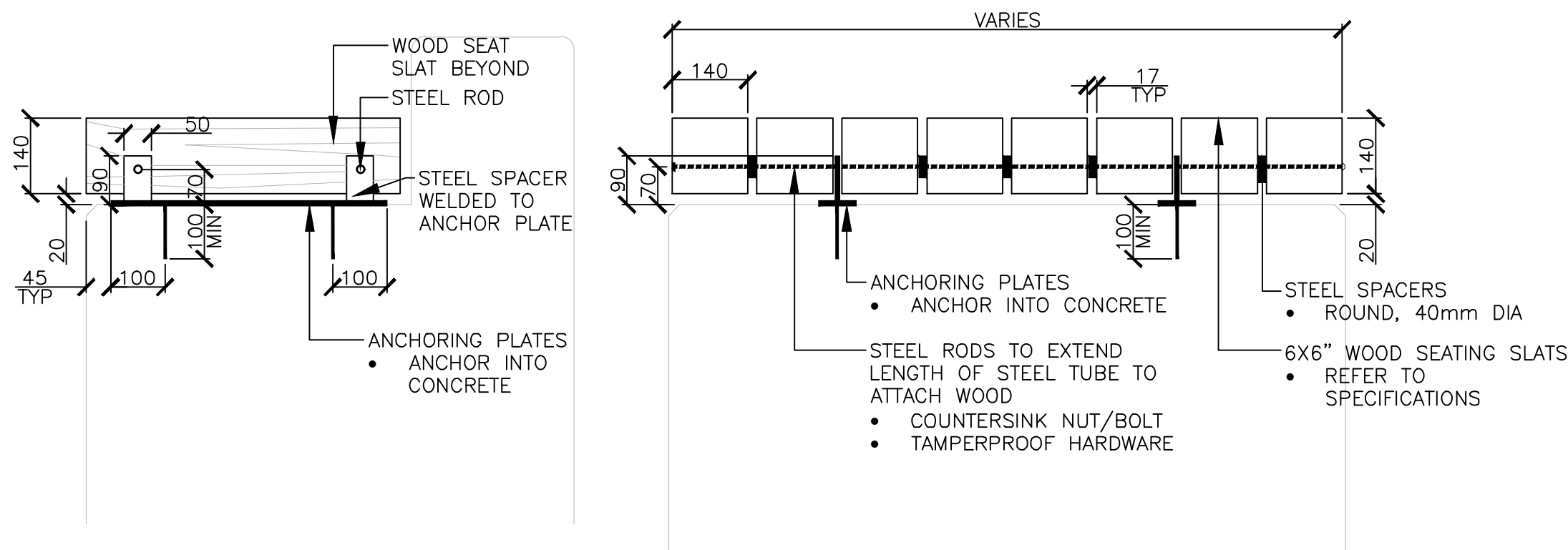


3 RAISED PLANTER 1:10

NOTES:
 1. ALL WALLS TO HAVE ARCHITECTURAL GRADE FORM WORK
 2. ALL EXPOSED SURFACES TO HAVE LIGHT SANDBLAST FINISH
 3. 25mm RADIUS ON TOP EDGES
 4. ENSURE 75mm COVERAGE OVER ALL HORIZONTAL AND VERTICAL REINFORCING
 5. BIT. FIBRE EXPANSION JOINT EVERY 4M (10M X 600mm SMOOTH STEEL DOWELS, GREASE AND SLEEVE ONE END (6 AT EACH EXPANSION JOINT), ENSURE 100mm COVER
 6. SHOP DRAWINGS TO BE SUBMITTED FOR REVIEW PRIOR TO COMMENCEMENT OF WORK
 7. VERIFY DIMENSIONS ON SITE
 8. STAMPED ENGINEER APPROVED SHOP DRAWING TO BE SUBMITTED FOR WALL OVER 600mm HT.



4 PLANTER WALL WITH BENCH 1:10



NOTES:
 1. CONTRACTOR TO SUBMIT SHOP DRAWINGS FOR APPROVAL PRIOR TO FABRICATION INCLUDING BUT NOT LIMITED TO HARDWARE, FINISH, ANCHORING AND INSTALLATION METHOD ETC.
 2. ALL STEEL TO BE GALVANIZED
 3. WOOD SEAT SLATS TO BE WESTERN RED CEDAR, 2X6" UNFINISHED
 3.1. SMOOTH ALL EDGES, ALL WOOD TO BE FREE OF SPLINTERS OR IRREGULARITIES, STABLE AND FREE OF MOVEMENT AFTER INSTALLATION

5 WOOD BENCH TOP 1:10

KEY	BOTANICAL NAME	COMMON NAME	QTY	SIZE	REMARKS
DECIDUOUS TREES					
AC	AMELANCHIER CANADENSIS	SERVICEBERRY	5	TREEFORM 40MM	W.B
AS	ACER SACCHARUM	SUGAR MAPLE	3	50mm CAL.	B&B/W.B
PT	POPULUS TREMULOIDES	TREMBLING ASPEN	7	50mm CAL.	B&B/W.B
QA	QUERCUS ALBA	WHITE OAK	2	50mm CAL.	B&B/W.B
QR	QUERCUS RUBRA	RED OAK	2	50mm CAL.	B&B/W.B
UP	ULMUS AMERICANA 'PRINCETON'	PRINCETON ELM	4	50mm CAL.	B&B/W.B
CONIFEROUS TREES					
PP	PICEA PUNGENS	COLORADO SPRUCE	2	1800mm HT.	B&B/W.B
SHRUBS					
CC	CARPINUS CAROLINIANA	BLUE BEECH	3	GAL.	POT
DK	DIERVILLA KODIAK BLACK	KODIAK BLACK DIERVILLA	3	GAL.	POT
HA	HYDRANGEA ARBORESCENS 'ANNABELLE'	ANNABELLE HYDRANGEA	3	GAL.	POT
HI	HAMAMELIS X INTERMEDIA ARNOLD PROMISE STD	ARNOLD'S PROMISE WITCH HAZEL TREEFORM	3	GAL.	POT
JH	JUNIPERUS HORR. 'PRINCE OF WALES'	PRINCE OF WALES JUNIPER	3	GAL.	POT
JG	JUNIPERUS CHINENSIS 'AUREA'	GOLD COAST JUNIPER	3	GAL.	POT
JO	JUNIPERUS VIRGINIANA 'GREY OWL'	GREY OWL JUNIPER	3	GAL.	POT
JS	JUNIPERUS CHINENSIS 'SPARTAN'	SPARTAN JUNIPER	3	GAL.	POT
JV	JUNIPERUS VIRGINIANA CANERTII	CANAERT RED CEDAR	3	GAL.	POT
MD	MICROBIOTA DECUSSATA	SIBERIAN CARPET CYPRESS	3	GAL.	POT
MP	MALUS PINK SPIRES	PINK SPIRES CRABAPPLE	3	GAL.	POT
PC	PINUS CEMBRA ALGONQUIN PILLAR	ALGONQUIN PILLAR SWISS STONE PINE	3	GAL.	POT
PO	PHYSOCARPUS OPUFOLIUS 'TINY WINE'	TINY WINE NINEBARK	3	GAL.	POT
PS	PHILADELPHUS X SNOWBELLE	SNOWBELLE MOCK ORANGE	3	GAL.	POT
RA	RHUS AROMATICA 'GRO-LOW'	GRO LOW SUMAC	3	GAL.	POT
SR	SYRINGA RETICULATA IVORY SILK	IVORY SILK LILAC	3	GAL.	POT
SS	SPIRAEA NIPPONICA 'SNOWMOUND'	SNOWMOUND SPIREA	3	GAL.	POT
GRASSES & PERENNIALS					
AF	AGASTACHE FOENICULUM 'BLUE FORTUNE'	ANISE HYSSOP	1	GAL.	POT
BC	BOUETEROUIA CURTIPENDULA	SIDE OATS GAMA	1	GAL.	POT
CA	CALAMAGROTIS ACUTIFLORA 'KARL FOERSTER'	KARL FOERSTER FEATHER REED GRASS	1	GAL.	POT
DC	DESCHAMPISIA CAESPITOSA	TUFTED HAIR GRASS	1	GAL.	POT
SA	SESLERIA AUTUMNALIS	AUTUMN MOORE GRASS	1	GAL.	POT
SB	SCHIZACHYRIUM SCOPARIUM 'THE BLUES'	THE BLUES LITTLE BLUESTEM	1	GAL.	POT
SH	SPOROBOLUS HETEROLEPSIS	PRAIRIE DROPSSEED	1	GAL.	POT
SN	SALVIA NEMOROSA 'MAY NIGHT'	MAY NIGHT MEADOW SAGE	1	GAL.	POT
PN	PANICUM VIRGATUM 'NORTHWIND'	NORTHWIND SWITCHGRASS	1	GAL.	POT
PP	PICEA OMORIKA 'PIMOKO'	PIMOKO DWARF SERBIAN SPRUCE	1	GAL.	POT
TC	TAXUS CUSPIDATA 'MOONGLOW'	EMERALD SPREADER JAPANESE YEW	1	GAL.	POT

6 PRELIMINARY PLANT LIST 1:30

PROJECT TEAM
 ARCHITECT
 FAXS ARCHITECTURE
 BRIGGAN GORDON-COOPER
 403.923.5072
 PLANNING
 Q2 PLANNING & DESIGN
 CHRISTINE INOUANG
 613.850.8345
 CIVIL
 IS GROUP
 DEMETRIUS YANNIKOPOULOS
 613.447.8844
 LANDSCAPE ARCHITECT
 CSW LANDSCAPE ARCHITECTS LTD.
 JERRY COURSH
 613.986.1008
 TRANSPORTATION
 IS GROUP
 BEN PASCOLOUCHEU
 613.225.3911 ext. 66074
 ENVIRONMENTAL
 GRADIENT WIND ENGINEERING
 JOSHUA FROSTER
 613.836.9834



RELEASES

NO.	DESCRIPTION	DATE

1050 TAWADINA RD WATERIDGE

1050 TAWADINA RD
 OTTAWA, ON
 PART OF BLOCK 11
 REGISTERED PLAN 4M-1651
 CITY OF OTTAWA
 ANNIS O'SULLIVAN VOLLEBECK LTD. 2022

22.01.W.U.
 CSW PROJECT NO. 232501

LMSW JC
 DATE 22.01.14
 SCALE AS NOTED

LANDSCAPE DETAILS

L2.1