

STRUCTURE ID	AREA ID	TOP OF GRATE ELEVATION	STORM STRUCTURE TABLE									
			INLET		OUTLET		SIZE		OPSD		COVER	
CB01		88.40			85.430	600x600mm	OPSD 705.010	S19.1	200	PVC SDR-35		
CB02		88.37			85.250	600x600mm	OPSD 705.011	S19.1	200	PVC SDR-35		
CB03		88.32			85.130	600x600mm	OPSD 705.012	S19.1	200	PVC SDR-35		
CB04		88.35			84.740	600x600mm	OPSD 705.013	S19.1	200	PVC SDR-35		
CB05		88.39			84.440	600x600mm	OPSD 705.014	S19.1	200	PVC SDR-35		
CB06		88.43			84.270	600x600mm	OPSD 705.015	S19.1	200	PVC SDR-35		
CB07		88.46			84.000	600x600mm	OPSD 705.016	S19.1	200	PVC SDR-35		
STMH100		88.78		84.300	84.270	1200mm DIA.	OPSD 701.010	S24.1	200	PVC SDR-35		
CBMH101		88.48			85.510	1200mm DIA.	OPSD 701.010	S28.1	250	PVC SDR-35		
STMH102		88.40		85.100	85.050	1200mm DIA.	OPSD 701.010	S24.1	300	PVC SDR-35		
STMH103		88.55			84.340	1200mm DIA.	OPSD 701.010	S24.1	375	PVC SDR-35		
STMH104		88.72			83.990	1200mm DIA.	OPSD 701.010	S24.1	525	CONCRETE		
CBMH105		88.60			83.530	1200mm DIA.	OPSD 701.010	S28.1	525	CONCRETE	125 VHV-2	
STMH106		88.79			83.450	1200mm DIA.	OPSD 701.010	S24.1	525	CONCRETE		
CBMH107		88.92			87.260	1200mm DIA.	OPSD 701.010	S28.1	300	PVC SDR-35		
YCB01		88.80			87.330	300mm DIA.	S30	S30	250	HDPE		
TCB02		88.80			87.580	300mm DIA.	S30	S30	250	HDPE		
TCB03		88.80			87.720	300mm DIA.	S30	S30	250	HDPE		
TCB04		88.85			87.850	300mm DIA.	S31	S30	250	HDPE		
TCB05		88.80			87.480	300mm DIA.	S30	S30	250	HDPE		
TCB06		88.80			87.570	300mm DIA.	S30	S30	250	HDPE		
TCB07		88.80			87.720	300mm DIA.	S30	S30	250	HDPE		
LCB08		88.85			87.850	300mm DIA.	S31	S30	250	HDPE		

WATERMAIN SCHEDULE					
STATION	DESCRIPTION	FINISHED GRADE	TOP OF WATERMAIN	COVER	
Dual 200mm W/M Services 1					
0+00.00	W/M STUB		89.07	86.670	2.40
0+001.00	200mm VB		89.03	86.630	2.40
0+002.15	45° Bend		88.99	86.590	2.40
0+004.33	45° Bend		88.95	86.550	2.40
0+011.04	Crossing with 200mm PVC STM		88.87	86.470	2.40
0+021.61	Crossing with 250mm PVC STM		88.69	86.290	2.40
0+023.11	Crossing with 200mm PVC SAN		88.58	86.180	2.40
0+025.22	45° Bend		88.52	86.120	2.40
0+026.57	45° Bend		88.49	86.090	2.40
0+038.71	200mm VB		89.25	86.850	2.40
0+093.21	Crossing with 1050mm CONC STM		89.31	86.910	2.40
0+095.21	Crossing with 375mm PVC SAN		89.41	87.010	2.40
0+098.22	Connect to Ex. 300mm W/M WITH200x300 Tee		89.31	86.910	2.40
Dual 200mm W/M Services 2					
1+000.00	W/M STUB		89.07	86.670	2.40
1+001.00	200mm VB		89.03	86.630	2.40
1+002.56	45° Bend		88.99	86.590	2.40
1+005.57	45° Bend		88.95	86.550	2.40
1+013.40	Crossing with 200mm PVC STM		88.87	86.470	2.40
1+016.79	45° Bend		88.75	86.350	2.40
1+018.96	45° Bend		88.68	86.280	2.40
1+026.92	Crossing with 200mm PVC SAN		88.84	86.440	2.40
1+032.78	200mm VB		88.67	86.270	2.40
1+041.84	Connect to Ex. 300mm W/M WITH200x300 Tee		89.97	87.570	2.40

STATION	DESCRIPTION	FINISHED GRADE	TOP OF WATERMAIN	COVER	Obvert		Invert	
					ELEVATION	DIAMETER	ELEVATION	DIAMETER
1	200mmØ PVC SAN	85.660	85.460	1.060	Clearance Above	84.400	84.200	200mmØ PVC STM
2	200mmØ PVC SAN	85.630	85.430	0.530	Clearance Under	86.360	86.160	200mmØ PVC W/M
3	200mmØ PVC STM	84.550	84.350	1.720	Clearance Under	86.470	86.270	200mmØ PVC W/M
4	200mmØ PVC STM	84.530	84.330	1.720	Clearance Under	86.450	86.250	200mmØ PVC W/M
5	250mmØ PVC STM	85.730	85.480	0.360	Clearance Under	86.290	86.090	200mmØ PVC W/M
6	200mmØ PVC SAN	85.400	85.200	0.520	Clearance Under	86.180	85.980	200mmØ PVC W/M
7	250mmØ PVC STM	85.410	85.160	0.280	Clearance Above	84.940	84.740	200mmØ PVC SAN

SAN STRUCTURE TABLE				
STRUCTURE ID	TOP OF GRATE ELEVATION	INLET	OUTLET	DESCRIPTION
SANMH201	88.47	84.750	84.720	1200mm DIA. OPSD-701.010 S24
SANMH202	88.66	85.360	85.300	1200mm DIA. OPSD-701.010 S24
SANMH203	88.80	84.950	84.920	1200mm DIA. OPSD-701.010 S24

APPROVED  
By Adam Brown at 12:56 pm, Aug 10, 2023

*Adam Brown*

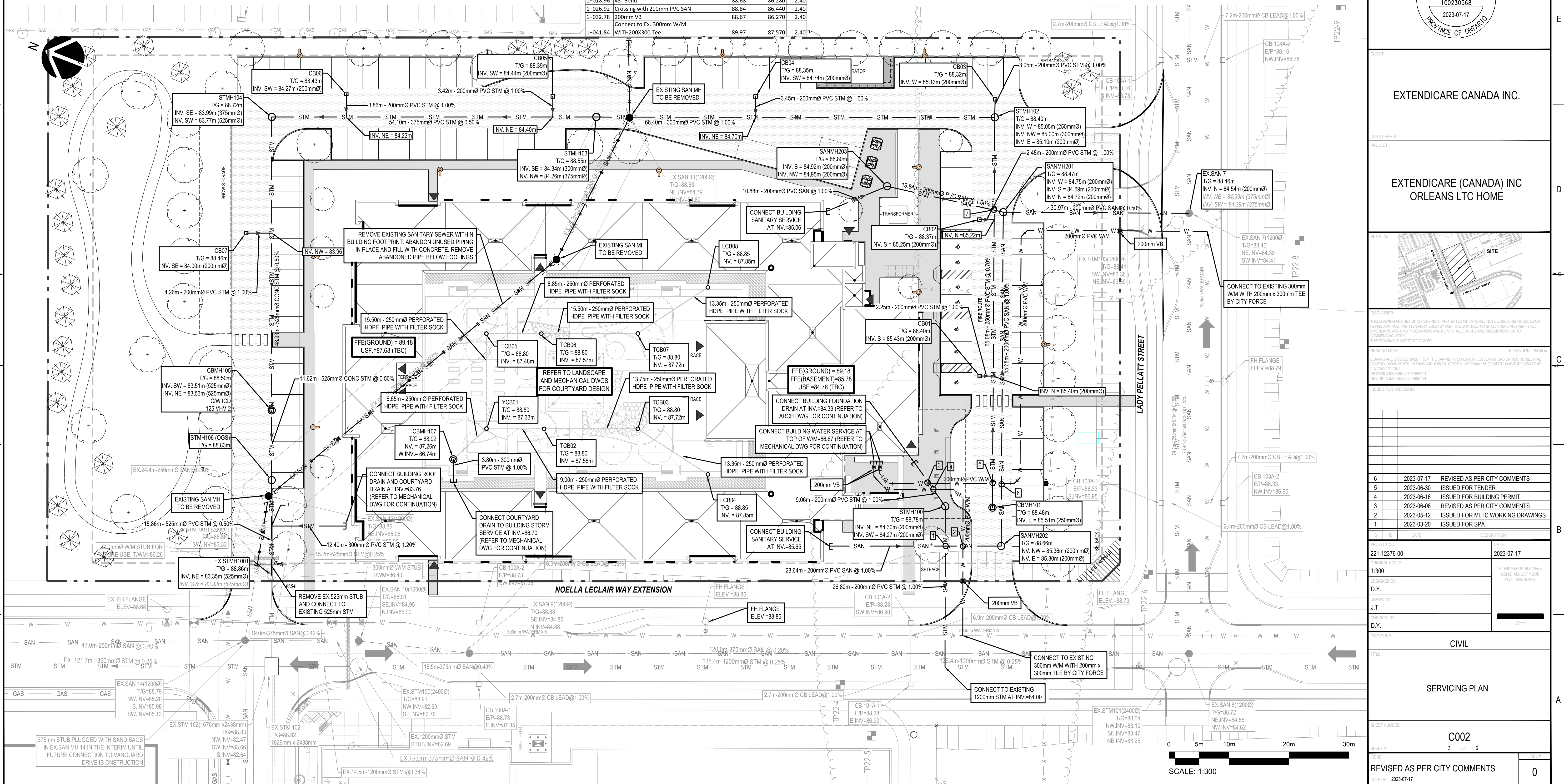
ADAM BROWN  
MANAGER, DEVELOPMENT REVIEW - RURAL  
PLANNING, REAL ESTATE & ECONOMIC DEVELOPMENT  
DEPARTMENT, CITY OF OTTAWA

MONTGOMERY SISAM ARCHITECTS INC.

197 SPADINA AVE. SUITE 301  
TORONTO, ONTARIO  
CANADA M5T 2E8

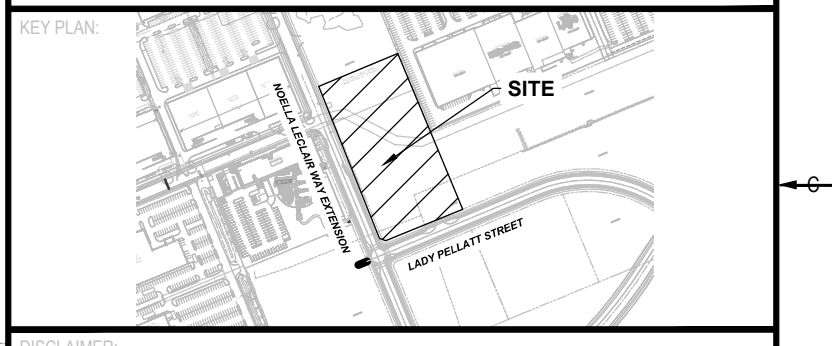
CLIENT: EXTENDICARE CANADA INC.  
PROJECT: EXTENDICARE (CANADA) INC ORLEANS LTC HOME

PROFESSIONAL ENGINEER  
D. B. YANG  
100230568  
2023-07-17  
PROVINCE OF ONTARIO



EXTENDICARE CANADA INC.

EXTENDICARE (CANADA) INC  
ORLEANS LTC HOME



REVISIONS

NO.	DATE	DESCRIPTION
6	2023-07-17	REVISED AS PER CITY COMMENTS
5	2023-06-30	ISSUED FOR TENDER
4	2023-06-16	ISSUED FOR BUILDING PERMIT
3	2023-06-08	REVISED AS PER CITY COMMENTS
2	2023-05-12	ISSUED FOR MLTC WORKING DRAWINGS
1	2023-03-20	ISSUED FOR SPA

NO.	DATE	DESCRIPTION
6	2023-07-17	REVISED AS PER CITY COMMENTS
5	2023-06-30	ISSUED FOR TENDER
4	2023-06-16	ISSUED FOR BUILDING PERMIT
3	2023-06-08	REVISED AS PER CITY COMMENTS
2	2023-05-12	ISSUED FOR MLTC WORKING DRAWINGS
1	2023-03-20	ISSUED FOR SPA

NO.	DATE	DESCRIPTION
6	2023-07-17	REVISED AS PER CITY COMMENTS
5	2023-06-30	ISSUED FOR TENDER
4	2023-06-16	ISSUED FOR BUILDING PERMIT
3	2023-06-08	REVISED AS PER CITY COMMENTS
2	2023-05-12	ISSUED FOR MLTC WORKING DRAWINGS
1	2023-03-20	ISSUED FOR SPA

NO.	DATE	DESCRIPTION
6	2023-07-17	REVISED AS PER CITY COMMENTS
5	2023-06-30	ISSUED FOR TENDER
4	2023-06-16	ISSUED FOR BUILDING PERMIT
3	2023-06-08	REVISED AS PER CITY COMMENTS
2	2023-05-12	ISSUED FOR MLTC WORKING DRAWINGS
1	2023-03-20	ISSUED FOR SPA