

MUNICIPALLY KNOWN AS ROBERTSON ROAD (FORMERLY HIGHWAY No. 15 INST NP60670 DHO PLAN P-2684-6) (OTTAWA ROAD No. 36)

TOPOGRAPHIC PLAN OF SURVEY OF

PART OF BLOCK D AND PART OF NORTHSIDE ROAD (AS CLOSED BY INST. NS123760) REGISTERED PLAN 392092 CITY OF OTTAWA

FARLEY, SMITH & DENIS SURVEYING LTD. 2022

Scale 1: 300

Metric Note Distances and coordinates on this plan are in metres and can be converted to feet by dividing by 0.3048.

Distance Note Distances shown on this plan are ground distances and can be converted to grid distances by multiplying by the combined scale factor of 0.99993.

Bearing Note Bearings hereon are grid bearings derived from the Can-Net Real Time Network and are referred to the Central Meridian of MTM Zone 9 (76°30' West Longitude) Nad-83 (Original).

Elevation Notes 1. Elevations shown are geodetic and are referred to Geodetic Datum CGVD-1928 -1973.

Utility Notes 1. This drawing cannot be accepted as acknowledging all of the utilities and it will be the responsibility of the user to contact the respective utility authorities for confirmation.

Notes & Legend Denotes Survey Monument Planted, Survey Monument Found, Standard Iron Bar, Short Standard Iron Bar, Iron Bar, Cut Cross, Witness, Measured, Plan by (B57) dated January 11, 2000 (Ref. No. 18-392092), Plan by (L287) dated July 7, 2000 (Job No. 227-00), Plan SR-8383, Maintenance Hole (Storm), Maintenance Hole (Sanitary), Maintenance Hole (Traffic), Valve Chamber (Watermain), Overhead Wires, Utility Pole, Anchor, Light Standard, Catch Basin, Corrugated Steel Pipe, Fire Hydrant, Traffic Terminal Box, Traffic Light, Bollard, Sign, Monitoring Well, Invert, Top of Grate, Top of Pipe, Centreline, Top of Slope, Location of Elevations, Top of Concrete Curb Elevation, Property Line

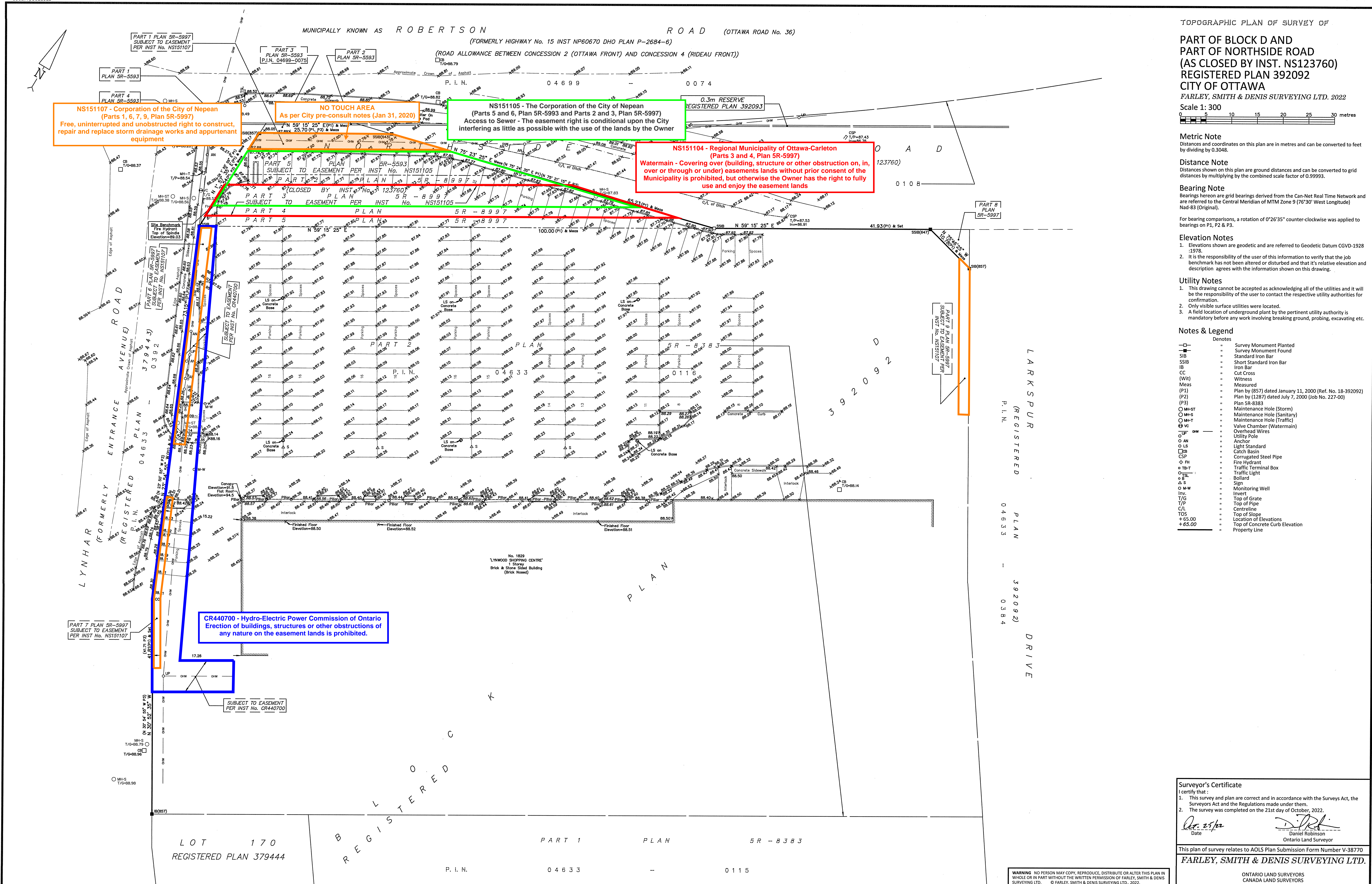
NS151107 - Corporation of the City of Nepean (Parts 1, 6, 7, 9, Plan SR-5997) Free, uninterrupted and unobstructed right to construct, repair and replace storm drainage works and appurtenant equipment

NO TOUCH AREA As per City pre-consult notes (Jan 31, 2020)

NS151105 - The Corporation of the City of Nepean (Parts 5 and 6, Plan SR-5993 and Parts 2 and 3, Plan SR-5997) Access to Sewer - The easement right is conditional upon the City interfering as little as possible with the use of the lands by the Owner

NS151104 - Regional Municipality of Ottawa-Carleton (Parts 3 and 4, Plan SR-5997) Watermain - Covering over (building, structure or other obstruction on, in, over or through or under) easements lands without prior consent of the Municipality is prohibited, but otherwise the Owner has the right to fully use and enjoy the easement lands

CR440700 - Hydro-Electric Power Commission of Ontario Erection of buildings, structures or other obstructions of any nature on the easement lands is prohibited.



Surveyor's Certificate I certify that: 1. This survey and plan are correct and in accordance with the Surveys Act, the Surveys Act and the Regulations made under them. 2. The survey was completed on the 21st day of October, 2022. Date: Oct. 25/22 Daniel Robinson Ontario Land Surveyor This plan of survey relates to AOLS Plan Submission Form Number V-38770 FARLEY, SMITH & DENIS SURVEYING LTD. ONTARIO LAND SURVEYORS CANADA LAND SURVEYORS Unit 275, 30 COLONNADE ROAD, OTTAWA, ONTARIO K2E 7J6 TEL: (613) 727-8226 E-mail: fdsurveys@bellnet.ca

WARNING NO PERSON MAY COPY, REPRODUCE, DISTRIBUTE OR ALTER THIS PLAN IN WHOLE OR IN PART WITHOUT THE WRITTEN PERMISSION OF FARLEY, SMITH & DENIS SURVEYING LTD. © FARLEY, SMITH & DENIS SURVEYING LTD., 2022.