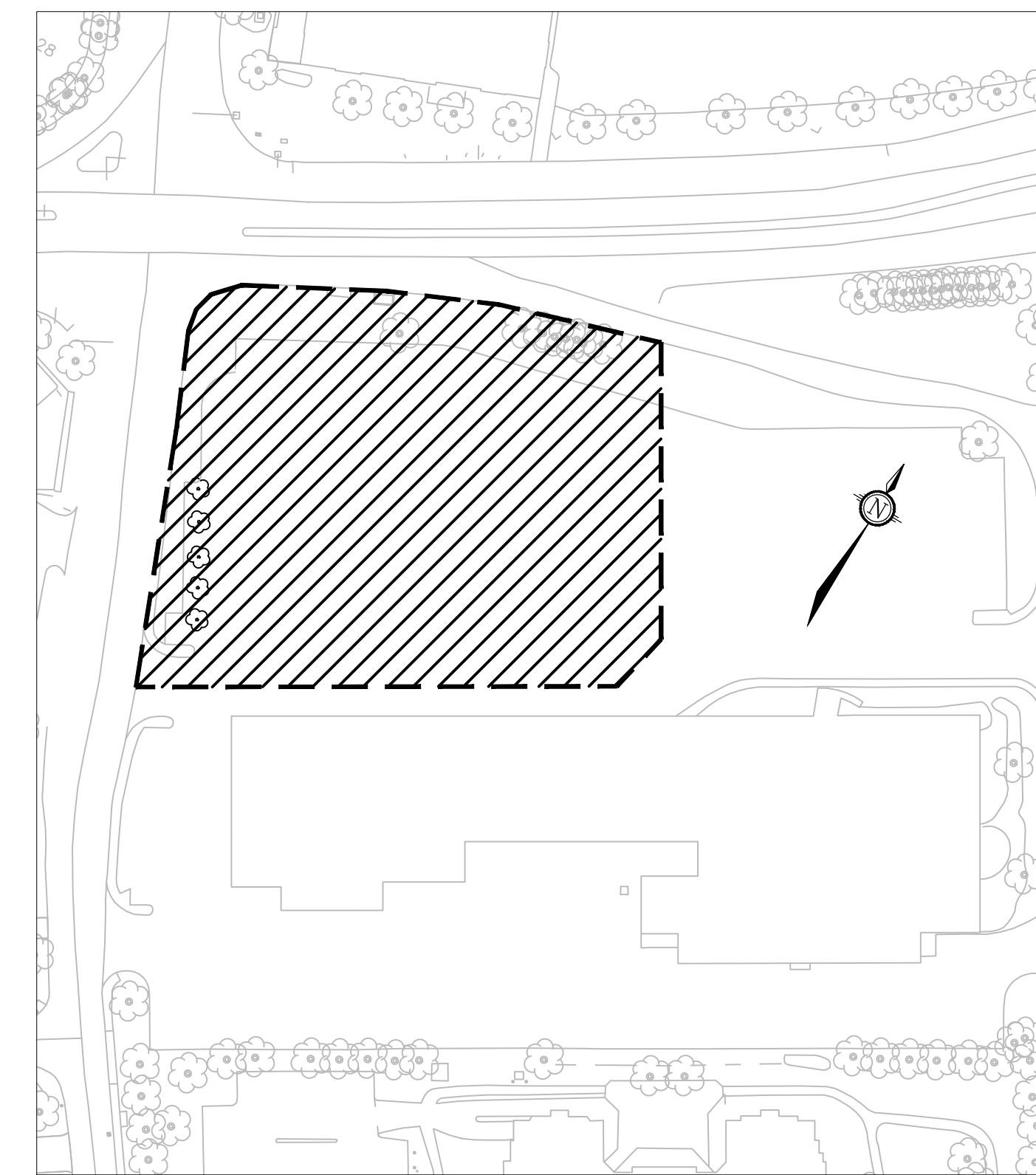
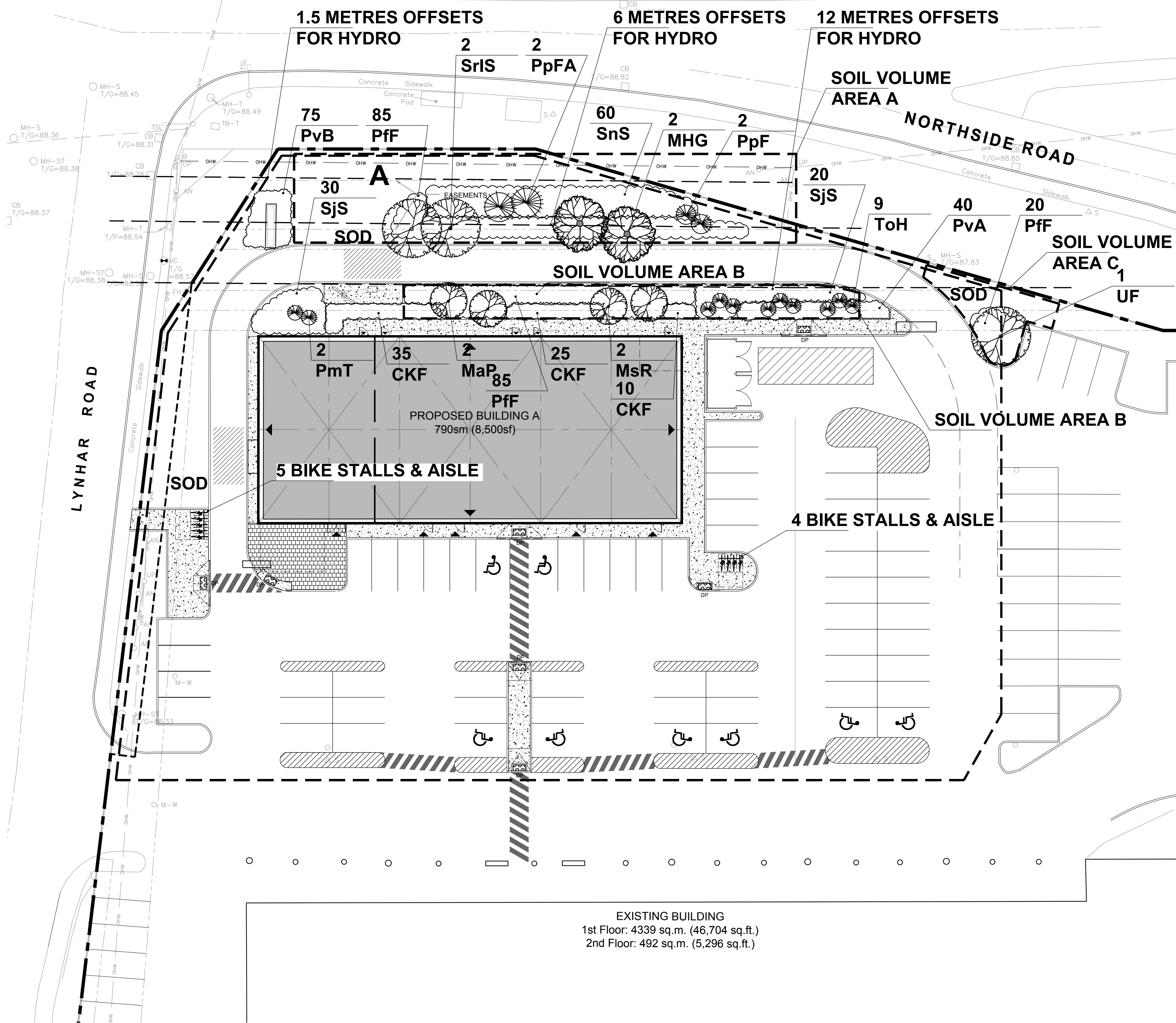


ROBERTSON ROAD



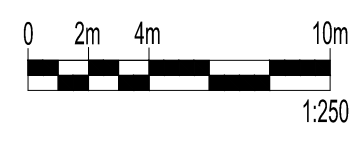
ID	Qty	Botanical Name	Common Name	Scheduled Size	Remarks
Trees					
UF	1	Umus x 'Frontier'	Frontier Elm	70mm cal.	WB, Staked
Small trees (6.0-12m max) under 6m-12m hydro offset					
MHG	2	Malus x 'Harvest Gold'	Harvest Gold Crabapple	50mm cal.	WB, Staked
Srs	2	Syringa reticulata 'Ivory Silk'	Ivory Silk Tree Lilac	50mm cal.	WB, Staked
Small trees Ornamental Trees (6.0m max) under 1.5m-6m hydro offset					
MaP	2	Morus alba 'Pendula'	Weeping Mulberry	150cm stem	WB, Staked
MsR	2	Malus sargentii 'Rosea'	Sargent's Pink Flowering Crab	50mm cal.	WB, Staked
PpF	2	Picea pungens 'Fastigiata'	Pyramidal Spruce	1200mm ht.	WB, Staked
PpFA	2	Picea pungens 'Fat Albert'	Fat Albert Colorado blue spruce	1200mm ht.	WB, Staked
Shrubs					
PF	190	Potentilla fruticosa 'Farreri'	Gold Drop Potentilla	50cm ht.	Potted, 0.85m o.c.
PmT	2	Pinus Mughoio 'Tannenbaum'	Tannenbaum Mugho Pine	1000mm ht.	WB, Staked
SJS	50	Spiraea japonica 'Shirobana'	Shirobana Spirea	50cm ht.	Potted, 1.0m o.c.
SnS	60	Spiraea nipponica 'Snowmound'	Snowmound Spirea	50cm ht.	Potted, 1.0m o.c.
ToH	9	Thuja occidentalis 'Holmstrup'	Holmstrup Cedar	1200mm ht.	WB, Staked
Perennials / Ornamental Grasses					
PvA	40	Flowering perennials		150mm Pot	50cm o.c.
PvB	75	Low Sun Flowering Perennials		150mm Pot	50cm o.c.
CKF	70	Calamagrostis acutifolia 'Karl Foerster'	Karl Foerster Feather Reed Grass	1 gallon Pot	80cm o.c.

Note: Perennial types: (invasives such as miscanthus or purple loosestrife are not to be planted)

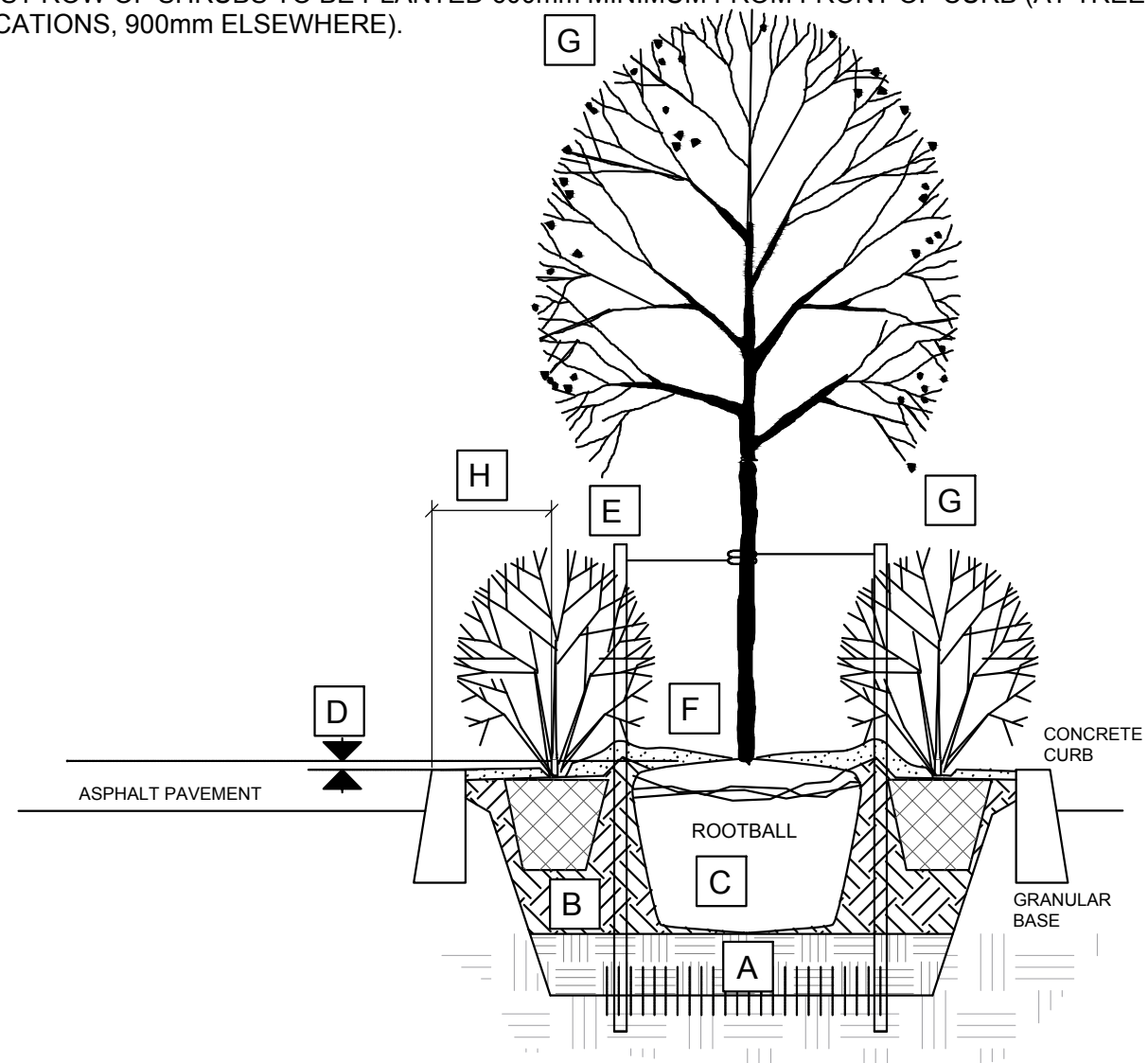
Soil Volume Area, Tree Quantity and Size	Tree Quantity	OTTAWA Target Soil Volume (m ³)	Design Soil Volume	Soil Adequacy percentage
AREA A - 4 ornamental trees (typical), 4 small conifers				
plant bed (435 sq m x 0.4 ave metre deep)	8	84.0	174.0	207.14%
AREA B - 4 ornamental trees (typical), 9 upright junipers				
plant bed (145 sq m x 0.4 ave metre deep)	13	45.5	58.0	127.61%
AREA C - 1 medium tree (typical)				
plant bed (60 sq m x 0.6 ave metre deep)	1	25.0	36.0	144.00%

* Small ornamental trees with growth to 8-15cm DBH, large shrubs, and columnar conifers calculated using 'How much soil to grow a big tree' by DeepRoot as a guide

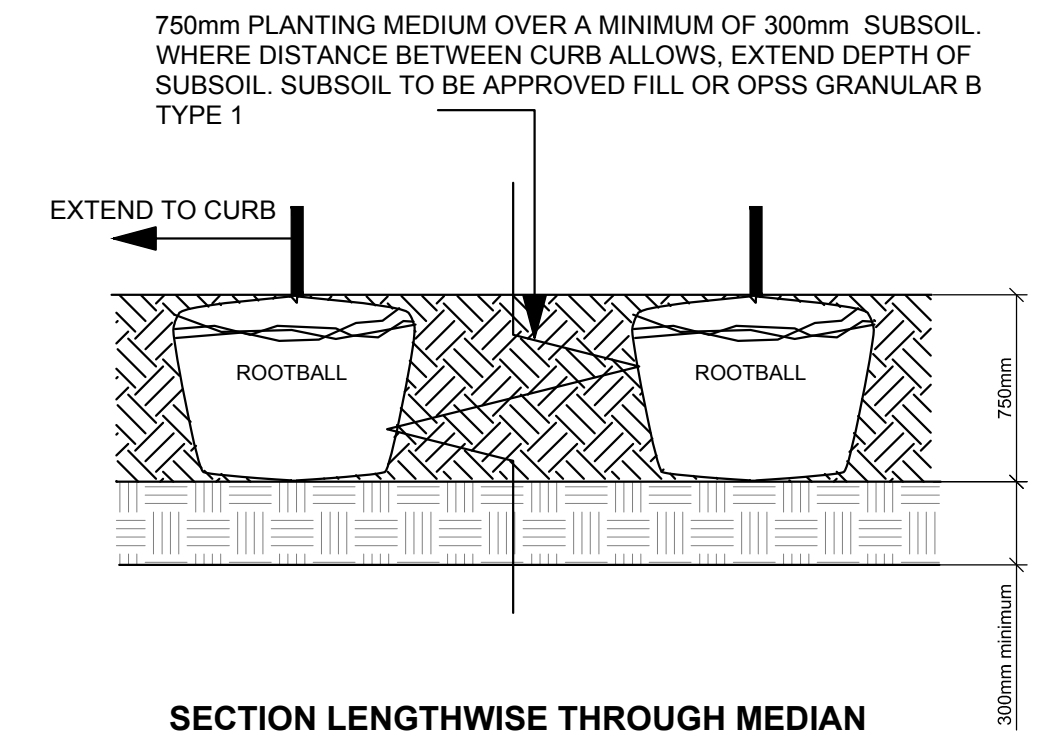
LANDSCAPE PLAN SCALE: 1:250



- A SUBSOIL / SUBGRADE CULTIVATED LAYER
- B PLANTING MEDIUM
- C ROOTBALL / POT
- D TOP OF ROOT CROWN TO BE FLUSH WITH PLANTING SOIL
- E 2-METAL POSTS (40x 40x 2100 mm) PLACE AT OUTSIDE OF ROOTBALL AND FASTEN TO TRUNK WITH 3 mm GALVANIZED WIRE AND 25 mmø 2 PLY REINFORCED HOSE (PARALLEL TO CURB).
- F 50-75 mm MULCH LAYER, KEEP MULCH AWAY FROM STEMS AND PROVIDE 100mm DEEP SAUCER.
- G PRUNE DAMAGE, DISEASED OR WEAK BRANCHES AS PER ACCEPTED HORTICULTURAL PRACTICE. DO NOT DAMAGE OR REMOVE LEADER
- H FIRST ROW OF SHRUBS TO BE PLANTED 600mm MINIMUM FROM FRONT OF CURB (AT TREE LOCATIONS, 900mm ELSEWHERE).



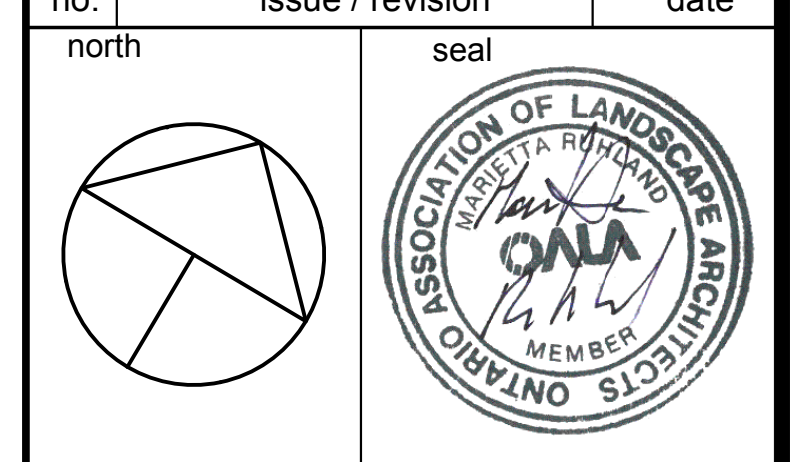
PLANTING IN MEDIAN



- Bed Preparation
- EXCAVATE OR PLACE FILL FOR PLANTING BED TO PROVIDE 750mm MINIMUM DEPTH OF PLANTING MEDIUM AND 300mm DEPTH SUBSOIL (CONTINUOUS BETWEEN TREES), CULTIVATE PLANTING SUBSOIL INTO SUBGRADE TO A DEPTH OF 150mm.
 - PLACE COMPACTED PLANTING MEDIUM ON SUBSOIL TO ACHIEVE FINAL GRADE.
 - CENTRE OF BED TO BE CROWNED ABOVE ADJACENT GRADE TO APPROVAL OF CONSULTANT.

- GENERAL NOTES
- ALL GENERAL SITE INFORMATION AND CONDITIONS COMPILED FROM EXISTING PLANS, SURVEYS AND CONSULTANT'S FIELD NOTES. REPORT ALL DISCREPANCIES PRIOR TO ANY WORK. NO RESPONSIBILITY IS BORN BY THE CONSULTANT FOR UNKNOWN SUBSURFACE CONDITIONS.
 - THE LOCATION OF THE UTILITIES IS APPROXIMATE ONLY, AND THE EXACT LOCATION SHOULD BE DETERMINED BY CONSULTING THE MUNICIPAL AUTHORITIES AND UTILITY COMPANIES CONCERNED. THE CONTRACTOR SHALL PROVE THE LOCATION OF UTILITIES AND SHALL BE RESPONSIBLE FOR ADEQUATE PROTECTION FROM DAMAGE.
 - No tree, designated on this plan as to stay, shall be removed. Where conditions in the field affect the safety or retention of the designated tree, the Landscape Architect and Planning Staff (OR OWNER) are to be notified.
 - Pruning of existing trees shall be done only to repair existing damage, AS SHOWN ON PLAN or as directed by the City (OR LANDSCAPE ARCHITECT). Pruning to be done only by a qualified arborist.
 - REVIEW PROJECT WITH CONSULTANT PRIOR TO COMMENCING ANY ON SITE WORK.
 - ALL DIMENSIONS SHOWN ARE TO BE VERIFIED ON SITE PRIOR TO ANY CONSTRUCTION. No deviations are to be made from the layouts as shown on this plan without prior consultation with the Landscape Architect and Planning Staff (OR OWNER).
 - OBTAIN APPROVAL OF LANDSCAPE ARCHITECT FOR GRANULAR BASE AND LAYOUT OF ALL PAVEMENT AREAS PRIOR TO CONSTRUCTION.
 - All sodded areas to receive a minimum of 150mm of topsoil over graded sub-base. DO NOT USE MESH. Sod shall come from an approved source and shall be laid within 24 hours of being cut in the nursery. Only nursery sod shall be used.
 - STAKE PLANTING LOCATIONS AND RECEIVE APPROVAL OF LANDSCAPE ARCHITECT, PRIOR TO EXCAVATION OF ANY PLANTING PITS. No substitutions of Plant Material shall be made without prior approval(s) of the Landscape Architect (and Planning Staff).
 - WHERE CLAY IS ENCOUNTERED PROPER DRAINAGE MUST BE ENSURED IN TREE/SHRUB PITS. PRIOR TO PLANTING, HAVE METHOD APPROVED BY LANDSCAPE ARCHITECT.
 - Final subgrade is to be approved by the Landscape Architect prior to IMPORTING TOPSOIL AND sod being laid.
 - MAINTAIN POSITIVE SURFACE RUNOFF THROUGH THE ENTIRE CONSTRUCTION PERIOD.
 - REINSTATE ALL AREAS AND ITEMS DAMAGED AS A RESULT OF CONSTRUCTION ACTIVITIES.

no.	issue / revision	date
1	Issued for Site Plan Control	2023/03/03



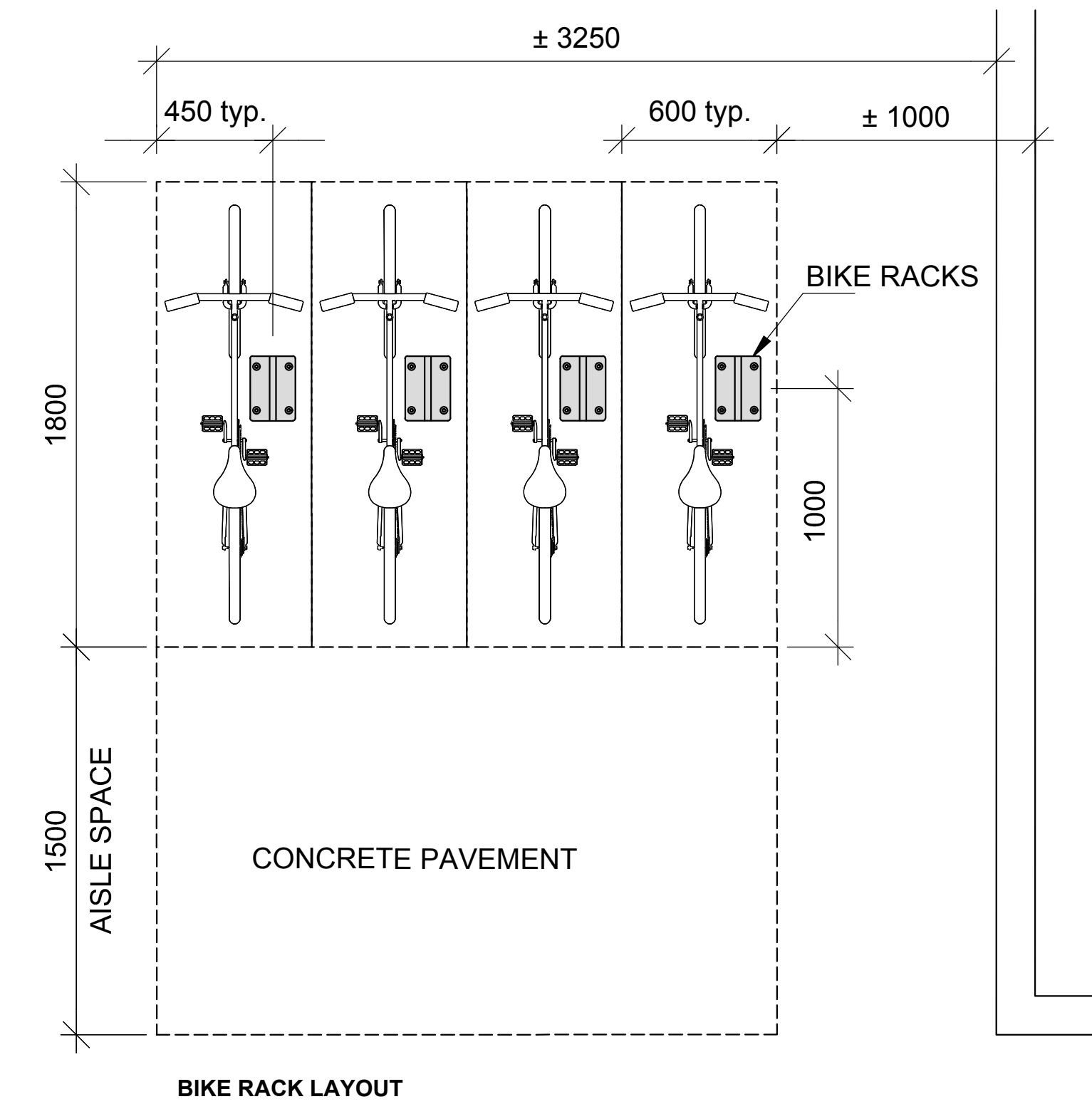
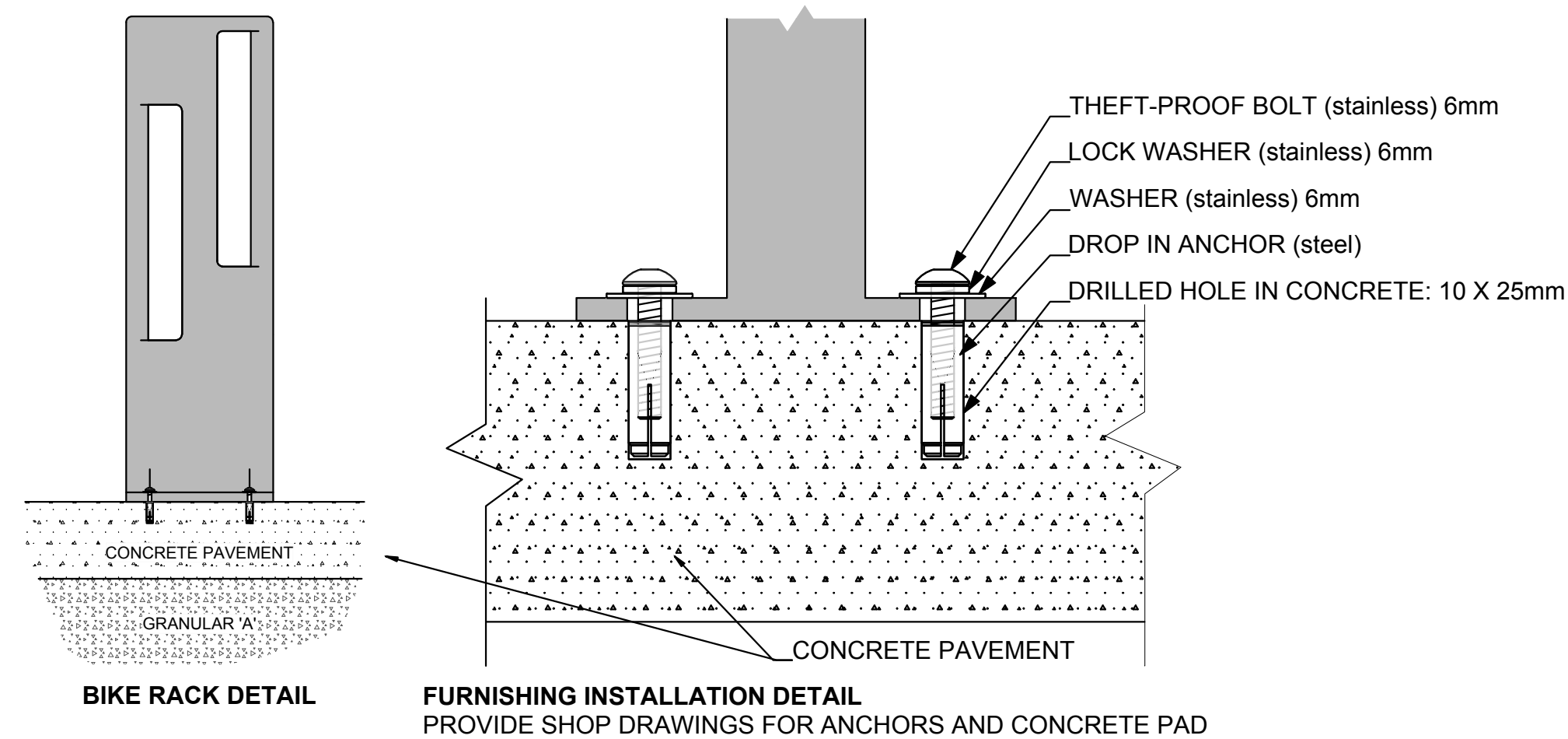
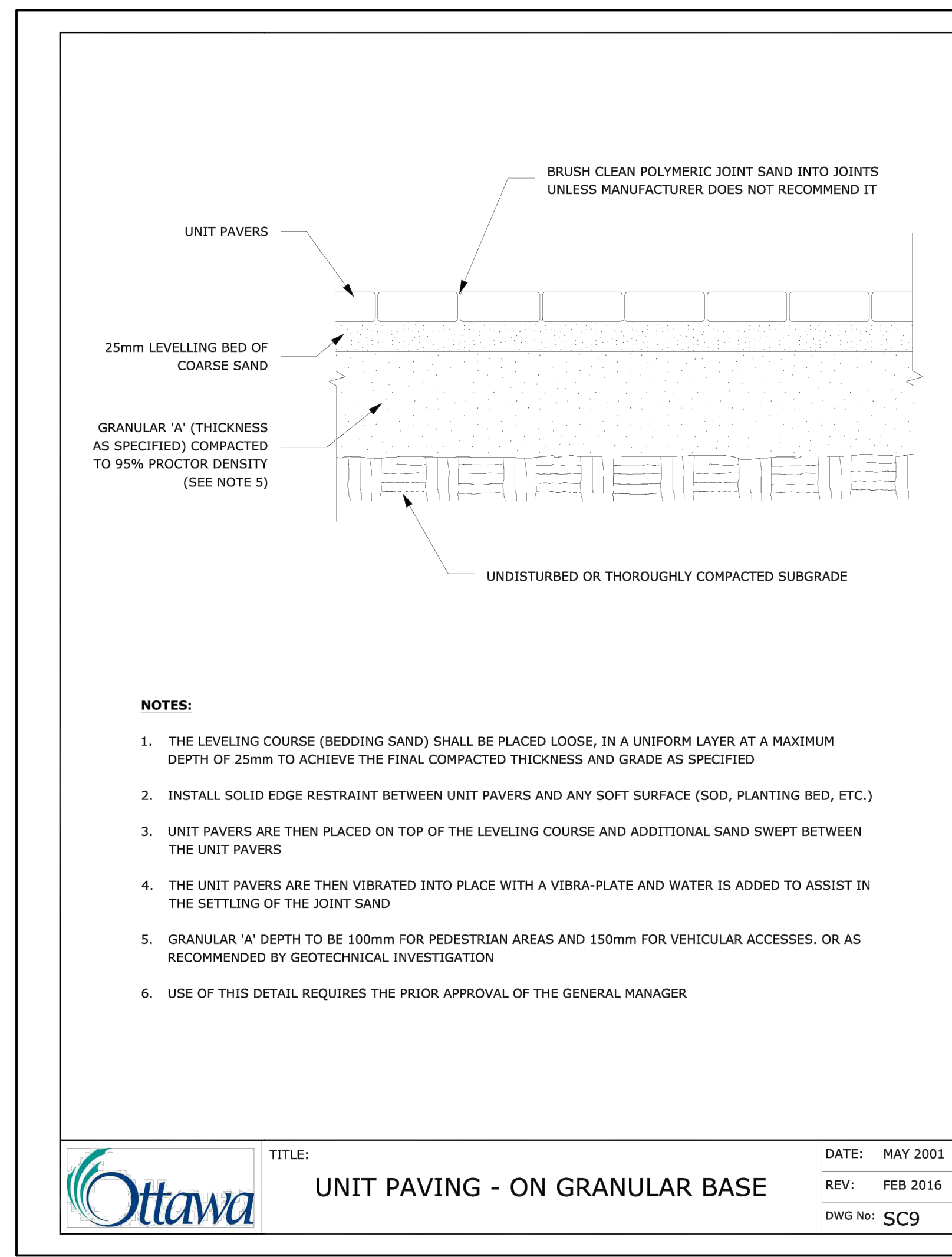
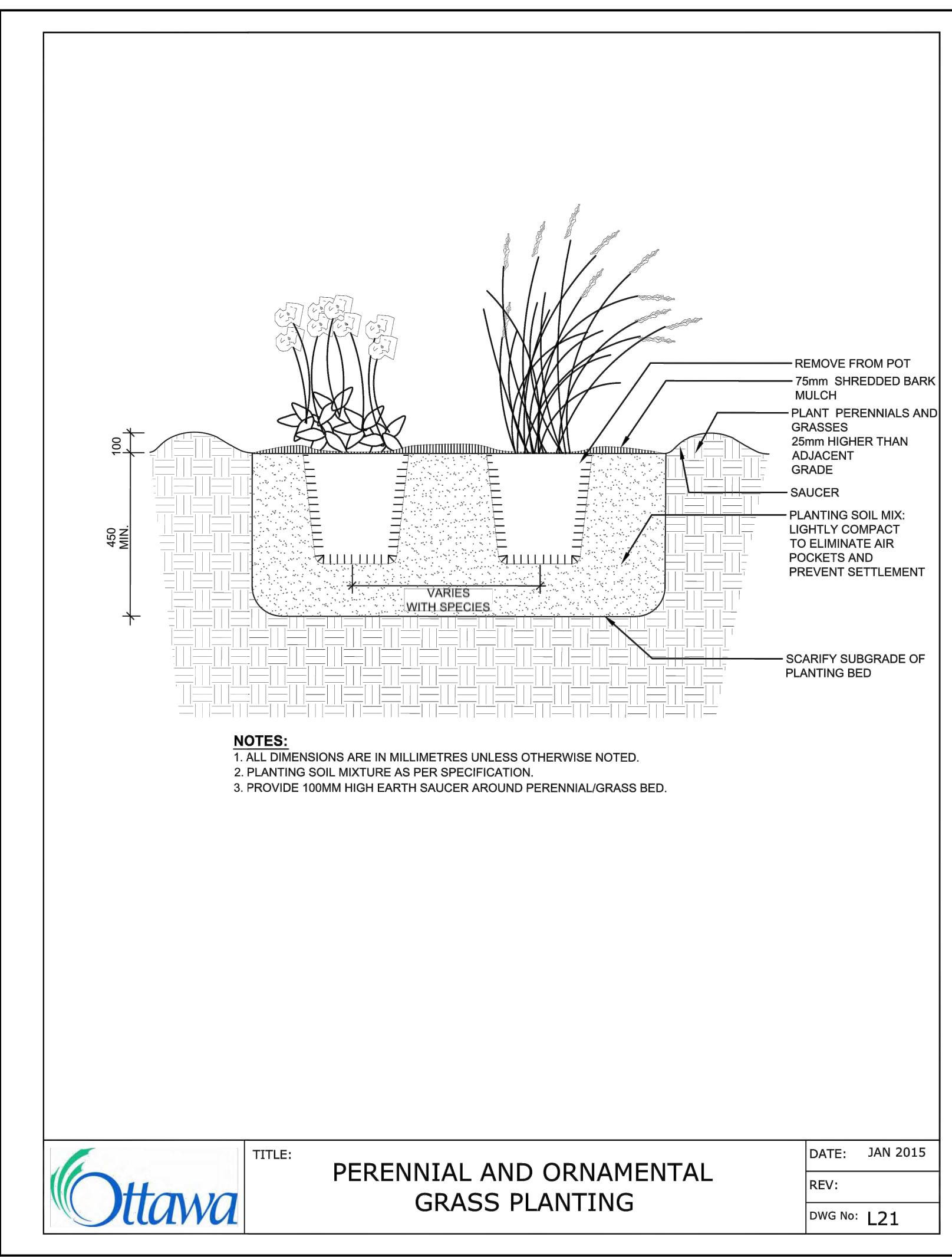
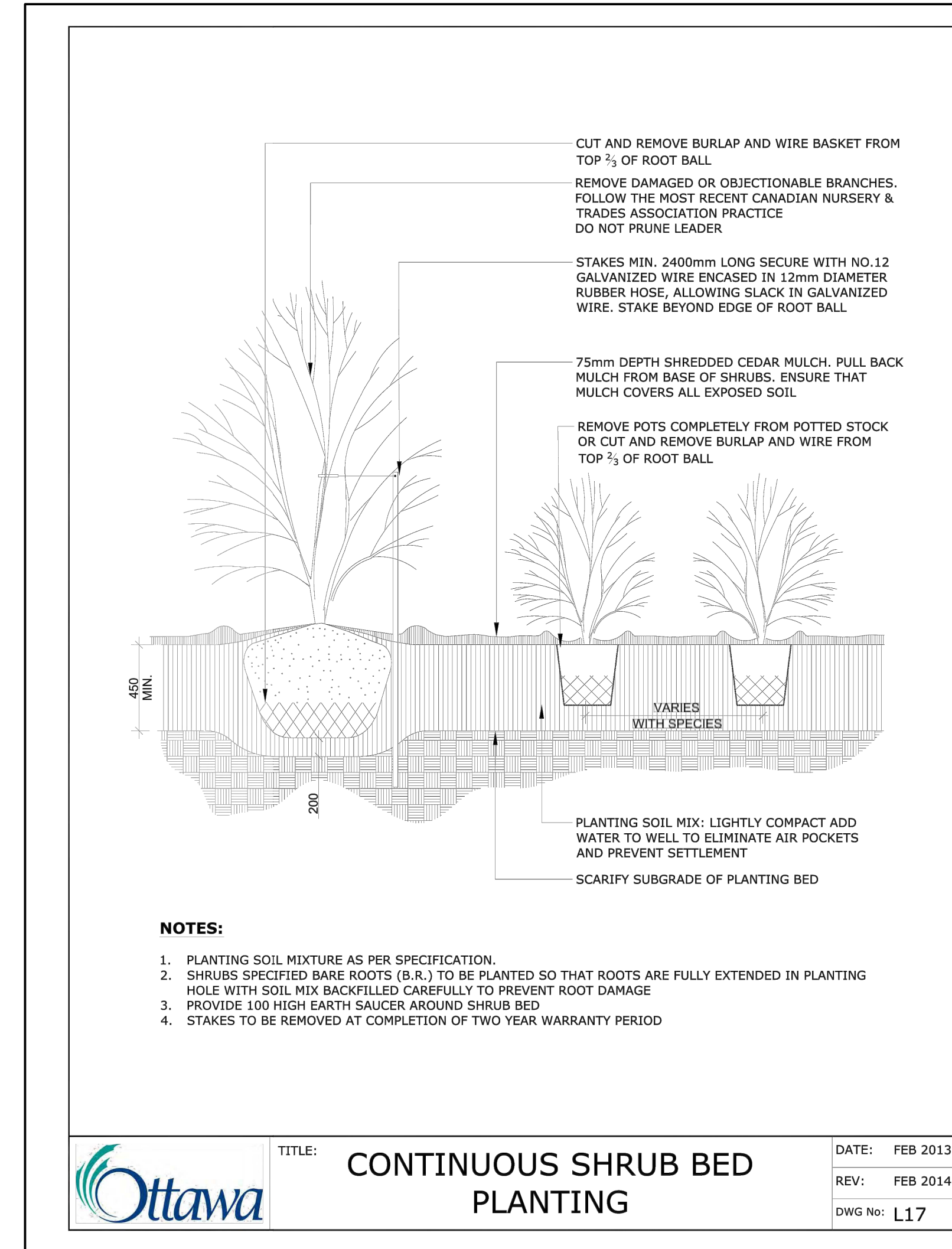
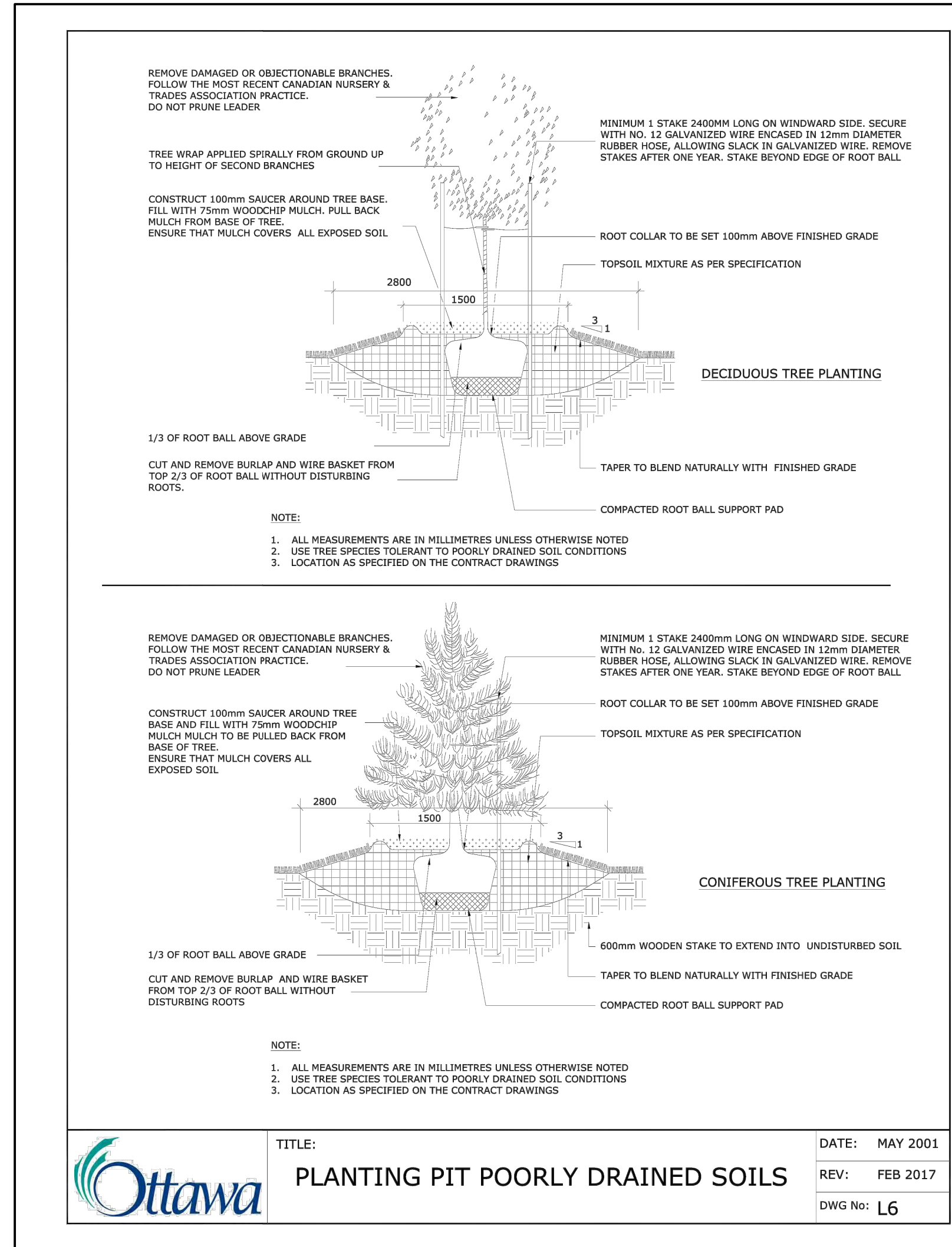
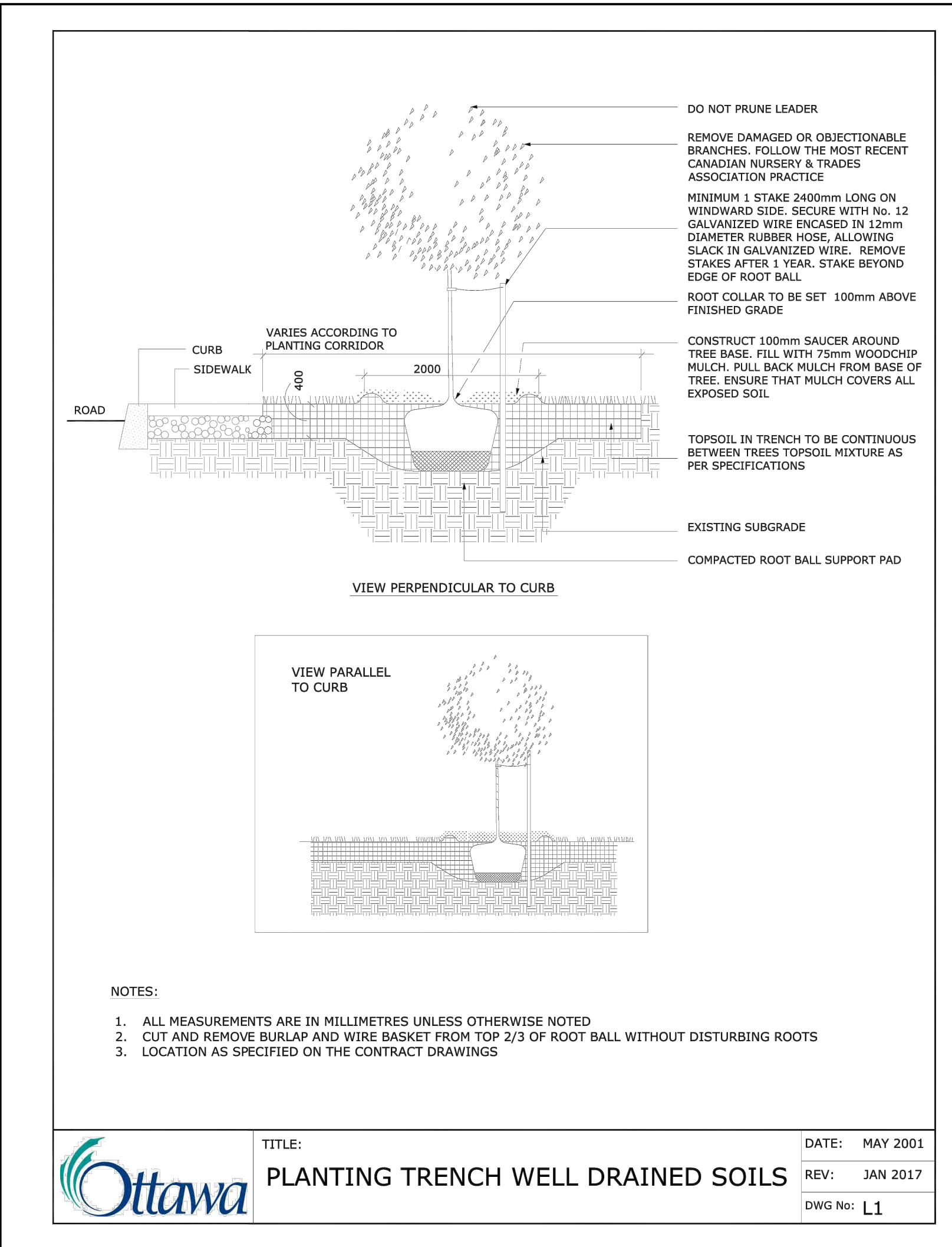
Ruhland & Associates Ltd
 landscape architecture • urban design • site planning
 Ph: 647-224-4764 • Fax: 647-224-4731 • info@ralta.ca • www.ralta.ca

project **LYNWOOD CENTRE REDEVELOPMENT**
1826 ROBERSTON ROAD
 drawing title

scale	drawn by	designed by
AS SHOWN	M. Markov	R. Ruhland
date	checked by	plot date
Nov. 2022	R. Ruhland	
project number	drawing number	
22-1694	L - 01	

Contractor to check and verify all dimensions on the job

NOTES:
TREES ARE TO BE INSTALLED AS PER CITY STANDARD DETAILS, SOIL VOLUME AS PER BELOW NOTES AND MATRIX ON SHEET L-01.
- STANDARD TREE SOIL VOLUMES QUANTITIES INCLUDE THE TOP 900-1000mm OF SOIL/EXISTING SUBSOIL LAYER TO CALCULATE TOTAL SOIL VOLUMES REQUIRED BY THE CITY OF OTTAWA FOR SUSTAINABLE TREE GROWTH. WHERE LARGER SOFT AREAS ARE AVAILABLE, THE TOP 400-500mm LAYER IS USED TO CALCULATE SOIL VOLUMES.
- WHERE EXISTING MATERIAL BELOW THE SPECIFIED TOPSOIL IS NOT CONDUCTIVE TO TREE GROWTH, AN ADDITIONAL LAYER OF PLANTING MEDIUM IS TO BE INSTALLED BELOW SPECIFIED TOPSOIL DEPTH TO OBTAIN THE SOIL VOLUME DEPTH REQUIRED.
- REFER TO SOIL VOLUME MATRIX AND PLANS FOR AREA WHERE TREE SOIL VOLUMES ARE REQUIRED.



- GENERAL NOTES**
- ALL GENERAL SITE INFORMATION AND CONDITIONS COMPILED FROM EXISTING PLANS, SURVEYS AND CONSULTANT'S FIELD NOTES. REPORT ALL DISCREPANCIES PRIOR TO ANY WORK. NO RESPONSIBILITY IS BORN BY THE CONSULTANT FOR UNKNOWN SUBSURFACE CONDITIONS.
 - THE LOCATION OF THE UTILITIES IS APPROXIMATE ONLY, AND THE EXACT LOCATION SHOULD BE DETERMINED BY CONSULTING THE MUNICIPAL AUTHORITIES AND UTILITY COMPANIES CONCERNED. THE CONTRACTOR SHALL PROVE THE LOCATION OF UTILITIES AND SHALL BE RESPONSIBLE FOR ADEQUATE PROTECTION FROM DAMAGE.
 - No tree, designated on this plan as to stay, shall be removed. Where conditions in the field affect the safety or retention of the designated tree, the Landscape Architect and Planning Staff (OR OWNER) are to be notified.
 - Pruning of existing trees shall be done only to repair existing damage, AS SHOWN ON PLAN or as directed by the City (OR LANDSCAPE ARCHITECT). Pruning to be done only by a qualified arborist.
 - REVIEW PROJECT WITH CONSULTANT PRIOR TO COMMENCING ANY ON SITE WORK.
 - ALL DIMENSIONS SHOWN ARE TO BE VERIFIED ON SITE PRIOR TO ANY CONSTRUCTION. No deviations are to be made from the layouts as shown on this plan without prior consultation with the Landscape Architect and Planning Staff (OR OWNER).
 - OBTAIN APPROVAL OF LANDSCAPE ARCHITECT FOR GRANULAR BASE AND LAYOUT OF ALL PAVEMENT AREAS PRIOR TO CONSTRUCTION.
 - All sodded areas to receive a minimum of 150mm of topsoil over graded sub-base. DO NOT USE MESH. Sod shall come from an approved source and shall be laid within 24 hours of being cut in the nursery. Only nursery sod shall be used.
 - STAKE PLANTING LOCATIONS AND RECEIVE APPROVAL OF LANDSCAPE ARCHITECT, PRIOR TO EXCAVATION OF ANY PLANTING PITS. No substitutions of Plant Material shall be made without prior approval(s) of the Landscape Architect (and Planning Staff).
 - WHERE CLAY IS ENCOUNTERED PROPER DRAINAGE MUST BE ENSURED IN TREE/SHRUB PITS. PRIOR TO PLANTING, HAVE METHOD APPROVED BY LANDSCAPE ARCHITECT.
 - Final subgrade is to be approved by the Landscape Architect prior to IMPORTING TOPSOIL AND sod being laid.
 - MAINTAIN POSITIVE SURFACE RUNOFF THROUGHOUT THE ENTIRE CONSTRUCTION PERIOD.
 - REINSTATE ALL AREAS AND ITEMS DAMAGED AS A RESULT OF CONSTRUCTION ACTIVITIES.

7		
6		
5		
4		
3		
2		
1	Issued for Site Plan Control	2023/03/03

no. issue / revision date

north seal

Ruhland & Associates Ltd
landscape architecture • urban design • site planning
Ph: 613-224-4264 Fax: 613-224-4231 info@ra.ca www.ra.ca

project **LYNWOOD CENTRE REDEVELOPMENT**
1826 ROBERSTON ROAD

drawing title **LANDSCAPE PLAN**

scale AS SHOWN	drawn by M. Malkov	designed by R. Ruhland
date Nov. 2022	checked by R. Ruhland	plot date
project number 22-1694	drawing number L - 01	

Contractor to check and verify all dimensions on the job