

- TREE PROTECTION REQUIREMENTS**
- PRIOR TO ANY WORK ACTIVITY WITHIN THE CRITICAL ROOT ZONE (CRZ = 10 X QUARTER OF A TREE. TREE PROTECTION FENCING MUST BE INSTALLED SURROUNDING THE CRITICAL ROOT ZONE, AND REMAIN IN PLACE UNTIL THE WORK IS COMPLETE.
  - UNLESS PLANS ARE APPROVED BY CITY FORESTRY STAFF, FOR WORK WITHIN THE CRZ:
    - DO NOT PLACE ANY MATERIAL OR EQUIPMENT - INCLUDING OUTDOORS;
    - DO NOT ATTACH ANY SIGNS, NOTICES OR POSTERS TO ANY TREE;
    - DO NOT RAISE OR LOWER THE EXISTING GRADE;
    - TUNNELS OR BORE WHEN DIGGING;
    - DO NOT DAMAGE THE ROOT SYSTEM, TRUNK, OR BRANCHES OR ANY TREE;
    - ENSURE THAT EXHAUST FUMES FROM ALL EQUIPMENT ARE NOT DIRECTED TOWARD ANY TREE CANOPY;
    - DO NOT EXTEND HARD SURFACE OR SIGNIFICANTLY CHANGE LANDSCAPING;
  - TREE PROTECTION FENCING MUST BE AT LEAST 1.2M IN HEIGHT, AND CONSTRUCTED OF RIGID OR FRAMED MATERIALS (E.G. MDOGLUC, STEEL, PLYWOOD HOARDING, OR SNOW FENCE ON A 2"x4" WOOD FRAME) WITH POSTS 2.4M APART, SUCH THAT THE FENCE LOCATION CANNOT BE ALTERED. ALL SUPPORTS AND BRACKS MUST BE PLACED OUTSIDE OF THE CRZ, AND INSTALLATION MUST MINIMIZE DAMAGE TO EXISTING ROOTS. (SEE DETAIL)
  - THE LOCATION OF THE TREE PROTECTION FENCING MUST BE DETERMINED BY AN ARBORIST AND RETAINED ON AN ASSOCIATED PLAN FOR THE SITE (E.G. TREE CONSERVATION REPORT, TREE INFORMATION REPORT, ETC.). THE PLAN AND CONSTRUCTION FENCING MUST BE APPROVED BY CITY FORESTRY STAFF PRIOR TO THE COMMENCEMENT OF WORK.
  - IF THE FENCED TREE PROTECTION AREA MUST BE REDUCED TO FACILITATE CONSTRUCTION, MITIGATION MEASURES MUST BE PRESCRIBED BY AN ARBORIST AND APPROVED BY CITY FORESTRY STAFF. THESE MAY INCLUDE THE PLACEMENT OF PLYWOOD, WOOD CHIPS, OR STEEL PLATING OVER THE ROOTS FOR PROTECTION ON THE PROPER PRUNING AND CARE OF ROOTS WHERE ENCOUNTERED.
- THE CITY'S TREE PROTECTION BY-LAW, 2005-S48 PROTECTS BOTH CITY-OWNED TREES, CITY WIDE, AND PRIVATELY OWNED TREES WITHIN THE URBAN AREA. PLEASE REFER TO WWW.OTTAWA.CA/TREEBYLAW FOR MORE INFORMATION ON HOW THE TREE BY-LAW APPLIES.



**TREE PROTECTION SPECIFICATION**  
 TO BE IMPLEMENTED FOR RETAINED TREES, BOTH ON SITE AND ON ADJACENT SITES, PRIOR TO ANY TREE REMOVAL OR SITE WORKS AND MAINTAINED FOR THE DURATION OF WORK ACTIVITIES ON SITE.

SCALE: NTS  
 DATE: MARCH 2021  
 DRAWING NO.: 1 of 1

**1 CITY OF OTTAWA STANDARD TREE PROTECTION DETAIL**  
**L1 n.t.s.**

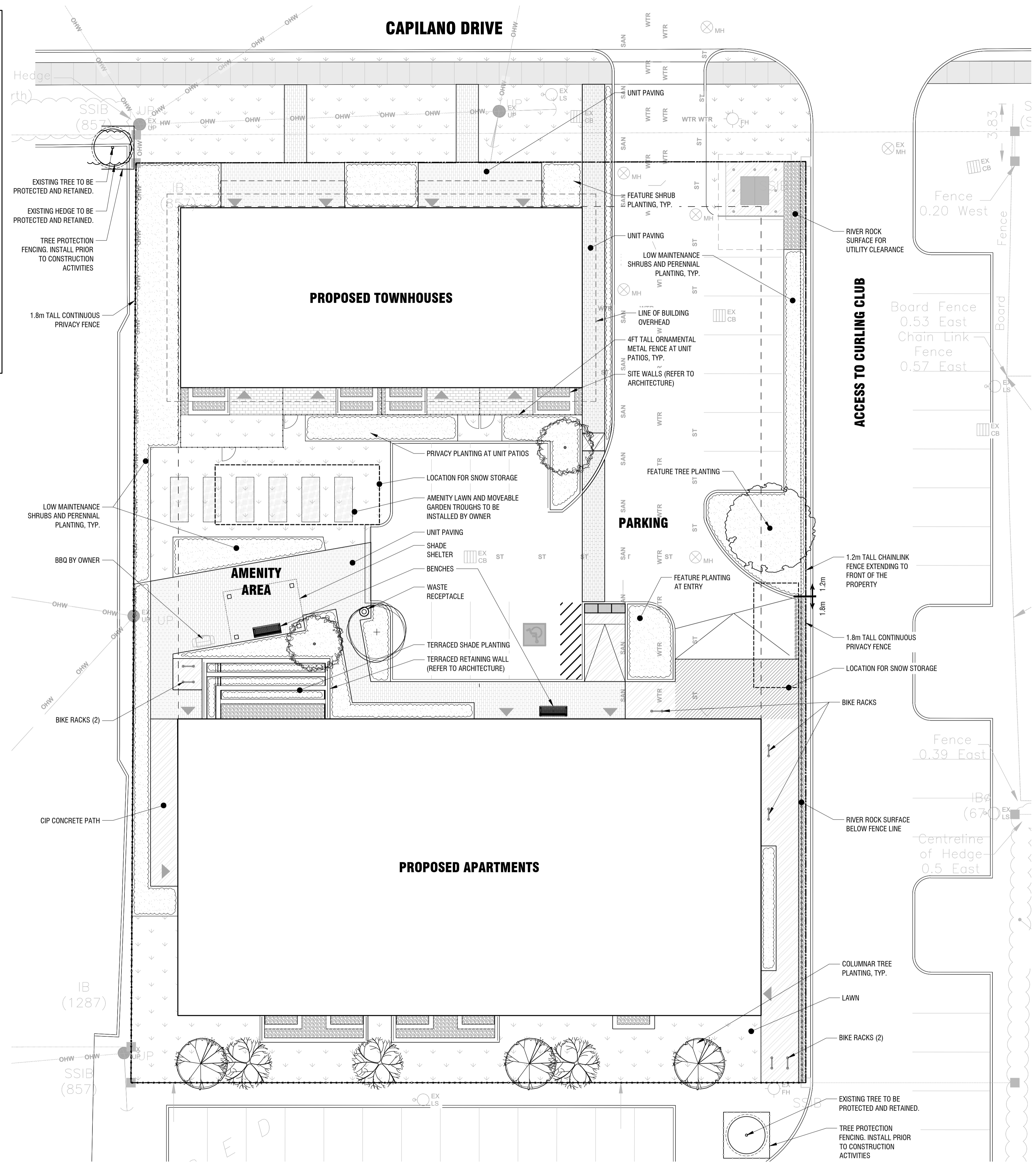
- NOTES:**
- DO NOT SCALE DRAWINGS;
  - NOTES ARE APPLICABLE TO ALL DRAWINGS IN THE SET;
  - Fotenn Consultants Inc. IS NOT RESPONSIBLE FOR ACCURACY OF BASE INFORMATION;
  - REFER TO CIVIL ENGINEERING DRAWINGS FOR GRADING & SITE SERVICING INFORMATION;
  - THE CONTRACTOR IS RESPONSIBLE FOR CONFIRMING SITE CONDITIONS AND REPORTING ANY DISCREPANCIES TO THE LANDSCAPE ARCHITECT;
  - THE CONTRACTOR IS RESPONSIBLE FOR CONFIRMING EXACT LOCATIONS OF ALL UNDERGROUND SERVICES AND OBTAINING CLEARANCE FROM ALL APPLICABLE UTILITIES. PROPOSED WORKS FOUND TO BE IN CONFLICT WITH UNDERGROUND SERVICES MAY BE ADJUSTED AT THE DIRECTION OF THE LANDSCAPE ARCHITECT;
  - LANDSCAPE ELEMENTS SHOWN ARE SUBJECT TO THE FINAL LOCATION OF UNDERGROUND SERVICES AND UTILITIES;
  - DO NOT INSTALL TREES ON PROPERTY / LOT LINES OR WITHIN DRAINAGE EASEMENTS;
  - PERFORM WORK IN ACCORDANCE WITH DETAILS AND SPECIFICATIONS;
  - ALL PLANT MATERIAL SHALL BE No. 1 NURSERY STOCK AND SHALL MEET OR EXCEED THE SPECIFICATION OF THE Canadian Standards for Nursery Stock, AS PUBLISHED BY THE Canadian Nursery Landscape Association;
  - SPECIES SUBSTITUTIONS ARE NOT PERMITTED WITHOUT PRIOR WRITTEN APPROVAL OF THE LANDSCAPE ARCHITECT;
  - ALL UN-PAVED SURFACES TO RECEIVE 150mm DEPTH TOPSOIL & SOD.

**IMPORTANT NOTICE FOR CONTRACTOR:**

THE CITY OF OTTAWA REQUIRES A Certificate of Completion (F1) Landscape Works TO BE SUBMITTED AND SEALED BY THE LANDSCAPE ARCHITECT. CONTRACTORS ARE RESPONSIBLE FOR FAMILIARIZING THEMSELVES WITH THE REQUIREMENTS OF THIS PROCESS AND PROVIDING SUFFICIENT NOTICE TO THE LANDSCAPE ARCHITECT TO CONDUCT SITE REVIEWS DURING INSTALLATION OF TREES. THE 1 YEAR WARRANTY PERIOD SHALL NOT COMMENCE UNTIL THE LANDSCAPE ARCHITECT HAS SUBMITTED THE F1 Certificate.

PRIOR TO INSTALLATION OF TREES, THE DEVELOPER WILL CONTACT THE PLANNING AND GROWTH MANAGEMENT AND FORESTRY SERVICES TO REVIEW THE SPECIES AND LOCATION OF TREES.

**PRELIMINARY  
NOT FOR CONSTRUCTION**



**2 LANDSCAPE PLAN**  
**L1 1:150**



Copyright Reserved  
 The Copyrights to all designs and drawings are the property of Fotenn Consultants Inc. Unauthorized reproduction or use is forbidden. DO NOT SCALE DRAWING

Copyright réservés  
 Les droits d'auteur à tous les modèles et dessins sont la propriété de Fotenn Consultants Inc. Reproduction ou utilisation non autorisée est interdite. NE PAS L'ÉCHELLE DE DESSIN

**OTTAWA SALUS CORPORATION**

Client / Client

key plan / plan repère

- legend / légende
- PROPERTY BOUNDARY
  - DECIDUOUS TREES (SEE PLANTING NOTES & SCHEDULE FOR SPECIES AND QUANTITIES)
  - CIP CONCRETE PAVING
  - HEAVY DUTY CIP CONCRETE PAVING
  - UNIT PAVERS
  - LAWN
  - PLANTING AREA
  - RIVER ROCK
  - 1.8m WOODEN PRIVACY FENCE
  - 1.2m CHAINLINK FENCE
  - 4' ORNAMENTAL METAL FENCE
  - BICYCLE RACK (2 BIKES PER RACK)
  - UNIVERSALLY ACCESSIBLE BENCH
  - FUTURE GARDEN PLOT

rev'n	description / la description	yyyy/mm/dd
02	revised per City comments for SPA	2023/07/26
01	issue for Site Plan Application	2023/03/03
00	issue for Client review	2023/02/01

**FOTENN Planning + Design**  
 396 Cooper Street, Suite 300  
 Ottawa, ON, CANADA K2P 2H7  
 613.730.5709  
 fotenn.com

north / le nord stamp / le cachet

**56 CAPILANO**

drawing / dessin

**LANDSCAPE PLAN**

designed / conçu	drawn / dessiné	reviewed / examiné
BM	BM/MB	DF
date	project number / No. du projet	
2023/01/26		

drawing number / No. du dessin

**L1 of 4**

PLOT INFORMATION: DWG NAME: P:\PROJECTS\252\Architectural\56 Capilano\56 Capilano\56 Capilano\56 Capilano.dwg PLOT DATE: 2023/07/26 2:14:45 PM SHEET SIZE: ISO (A1) (841x594) PLOTTED BY: Binama Mitchell LAST SAVED BY: binama



# PLANT SCHEDULE

TREES	QTY	BOTANICAL NAME	COMMON NAME	SIZE / CONDITION / SPACING
AL	2	Amelanchier laevis	Allegheny Serviceberry	50mm cal. / W.B. (single stem, tree form)
CA	1	Cercis canadensis 'Ace of Hearts'	Ace of Hearts Eastern Redbud	50mm cal. / W.B. (single stem, tree form)
FT	1	Fagus sylvatica 'Tricolor'	Tricolor European Beech	60mm cal. / W.B.
LF	3	Liriodendron tulipifera 'Fastigiata'	Columnar Tulip Poplar	60mm cal. / W.B.
QP	3	Quercus palustris 'Pringreen'	Green Pillar® Pin Oak	60mm cal. / W.B.

SHRUBS	QTY	BOTANICAL NAME	COMMON NAME	SIZE / CONDITION / SPACING
Fo	6	Forsythia ovata 'Ottawa'	Early Forsythia	100cm ht. / specimen quality / 5.0m sp.
Hv	1	Hamamelis virginiana	Common Witch Hazel	100cm ht. / specimen quality / 1.75m sp.
Po2	28	Physocarpus opulifolius 'Dart's Gold'	Dart's Gold Ninebark	#2 Pot / Refer to plan for spacing
Rr	35	Rosa rugosa	Rugosa Rose	#2 Pot / 90cm sp.
Ss	47	Sorbaria sorbifolia 'Sem'	Sem False Spiraea	#2 Pot / 90cm sp.

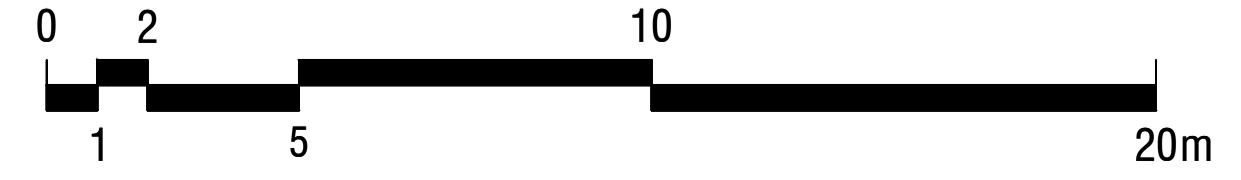
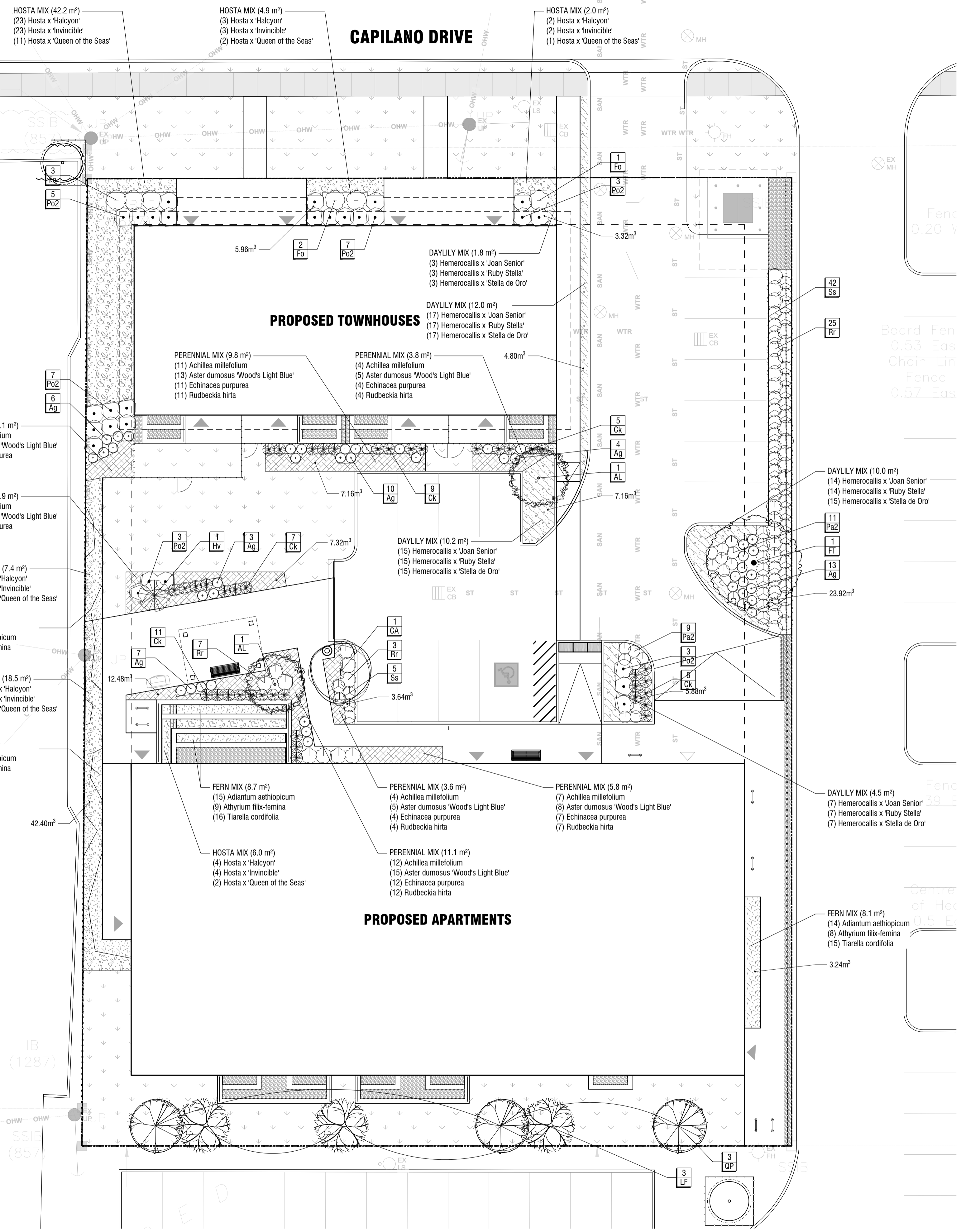
PERENNIALS & GRASSES	QTY	BOTANICAL NAME	COMMON NAME	SIZE / CONDITION / SPACING
Ag	43	Andropogon gerardii 'Dancing Wind'	Dancing Wind Big Bluestem	#1 Pot / Refer to plan for spacing
Ck	40	Calamagrostis x acutiflora 'Karl Foerster'	Karl Foerster Feather Reed Grass	#2 Pot / 75cm sp.
Pa2	19	Perovskia atriplicifolia	Russian Sage	#2 Pot / 75cm sp.

	<b>HOSTA MIX</b>	80.9 m <sup>2</sup>
	Hosta x 'Halcyon' / Halcyon Hosta	132 #2 Pot / 75cm sp.
	Hosta x 'Invincible' / Invincible Hosta	132 #2 Pot / 75cm sp.
	Hosta x 'Queen of the Seas' / Queen of the Seas Hosta	59 #2 Pot / 100cm sp.
	<b>DAYLILY MIX</b>	38.5 m <sup>2</sup>
	Hemerocallis x 'Joan Senior' / Joan Senior Daylily	160 #1 Pot / 45cm sp.
	Hemerocallis x 'Ruby Stella' / Ruby Stella Daylily	160 #1 Pot / 45cm sp.
	Hemerocallis x 'Stella de Oro' / Stella de Oro Daylily	160 #1 Pot / 45cm sp.
	<b>FERN MIX</b>	31.0 m <sup>2</sup>
	Adiantum aethiopicum / Maidenhair Fern	160 #1 Pot / 45cm sp.
	Athyrium filix-femina / Common Lady Fern	90 #1 Pot / 60cm sp.
	Tiarella cordifolia / Foamflower	160 #1 Pot / 45cm sp.
	<b>PERENNIAL MIX</b>	50.2 m <sup>2</sup>
	Achillea millefolium / Common Yarrow	209 #1 Pot / 45cm sp.
	Aster dumosus 'Wood's Light Blue' / Wood's Light Blue Aster	258 #1 Pot / 45cm sp.
	Echinacea purpurea / Coneflower	209 #1 Pot / 45cm sp.
	Rudbeckia hirta / Black-eyed Susan	209 #1 Pot / 45cm sp.

**PLANTING MIX NOTES:**  
DISTRIBUTE PLANTS EVENLY WITHIN EACH MIX TYPE TO ACHIEVE A UNIFORMLY BLENDED MIX IN EACH AREA

- STANDARDS FOR TREE PLANTING:**
- NO PLANTING ON CORNERS OR ANYWHERE WHERE IT WOULD CREATE A SIGHT LINE CONCERN;
  - MAINTAIN A MINIMUM DISTANCE OF 7.5m FROM ALL BUILDINGS;
  - MAINTAIN A MINIMUM DISTANCE OF 2.5m FROM THE CURB FOR DECIDUOUS TREES AND 4.5m FOR CONIFEROUS TREES;
  - MAINTAIN A MINIMUM DISTANCE OF 1.5m FOR DECIDUOUS (4.5m FOR CONIFERS) FROM ANY SIDEWALK OR PRIVATE WALKWAY;
  - MAINTAIN A MINIMUM DISTANCE OF 1.2m FROM ALL DRIVEWAYS;
  - MAINTAIN A MINIMUM DISTANCE OF 2.5m FROM COMMUNITY MAILBOXES, LIGHT STANDARDS, FIRE HYDRANTS AND NO PLANTING IN FRONT OF HYDRANTS;
  - MAINTAIN A MINIMUM DISTANCE OF 3.0m FROM ALL HYDRO TRANSFORMERS;
  - MAINTAIN A MINIMUM DISTANCE OF 1.0m FROM ALL UNDERGROUND SERVICES;
  - MAINTAIN A MINIMUM DISTANCE OF 1.0m FROM ALL BELL AND CABLE BOXES;
  - MAINTAIN A MINIMUM DISTANCE OF 10.0 FROM BUS SHELTERS

**PRELIMINARY**  
NOT FOR CONSTRUCTION



**1 PLANTING PLAN**  
**L2 1:150**

Copyright Reserved  
The Copyrights to all designs and drawings are the property of Fotenn Consultants Inc. Unauthorized reproduction or use is forbidden. DO NOT SCALE DRAWING  
Copyright réservés  
Les droits d'auteur à tous les modèles et dessins sont la propriété de Fotenn Consultants Inc. Reproduction ou utilisation non autorisée est interdite. NE PAS L'ÉCHELLE DE DESSIN

## OTTAWA SALUS CORPORATION

key plan / plan repère

legend / légende

- PROPERTY BOUNDARY
- DECIDUOUS TREES (SEE PLANTING NOTES & SCHEDULE FOR SPECIES AND QUANTITIES)
- LAWN
- RIVER ROCK
- SHRUB AND PERENNIAL PLANTING (SEE PLANTING PLAN AND SCHEDULE FOR SPECIES, QUANTITIES AND PLANTING LOCATIONS)

rev'n	description / la description	yyyy/mm/dd
02	revised per City comments for SPA	2023/07/26
01	issue for Site Plan Application	2023/03/03
00	issue for Client review	2023/02/01

**FOTENN Planning + Design**  
396 Cooper Street, Suite 300  
Ottawa, ON, CANADA K2P 2H7  
613.730.5709  
fotenn.com

north / le nord stamp / le cachet

project / projet

## 56 CAPILANO

drawing / dessin

## PLANTING PLAN

designed / conçu <b>BM</b>	drawn / dessiné <b>BM/MB</b>	reviewed / examiné <b>DF</b>
date <b>2023/01/26</b>		
drawing number / No. du dessin		

# L2 of 4

PLOT INFORMATION: DWG NAME: P:\PROJECTS\252\Architectural\56Capilano\56Capilano\56Capilano\56Capilano.dwg PLOT DATE: 2023/01/26 2:28:09 PM SHEET SIZE: 600x900mm PLOTTED BY: Binama Mitchell LAST SAVED BY: Binama Mitchell



**OTTAWA SALUS CORPORATION**

key plan / plan repère

legend / légende

rev'n	description / la description	yyyy/mm/dd
02	revised per City comments for SPA	2023/07/26
01	issue for Site Plan Application	2023/03/03
00	issue for Client review	2023/02/01

**FOTENN Planning + Design**  
 396 Cooper Street, Suite 300  
 Ottawa, ON, CANADA K2P 2H7  
 613.730.5709  
 fotenn.com

north / le nord

stamp / le cachet

project / projet

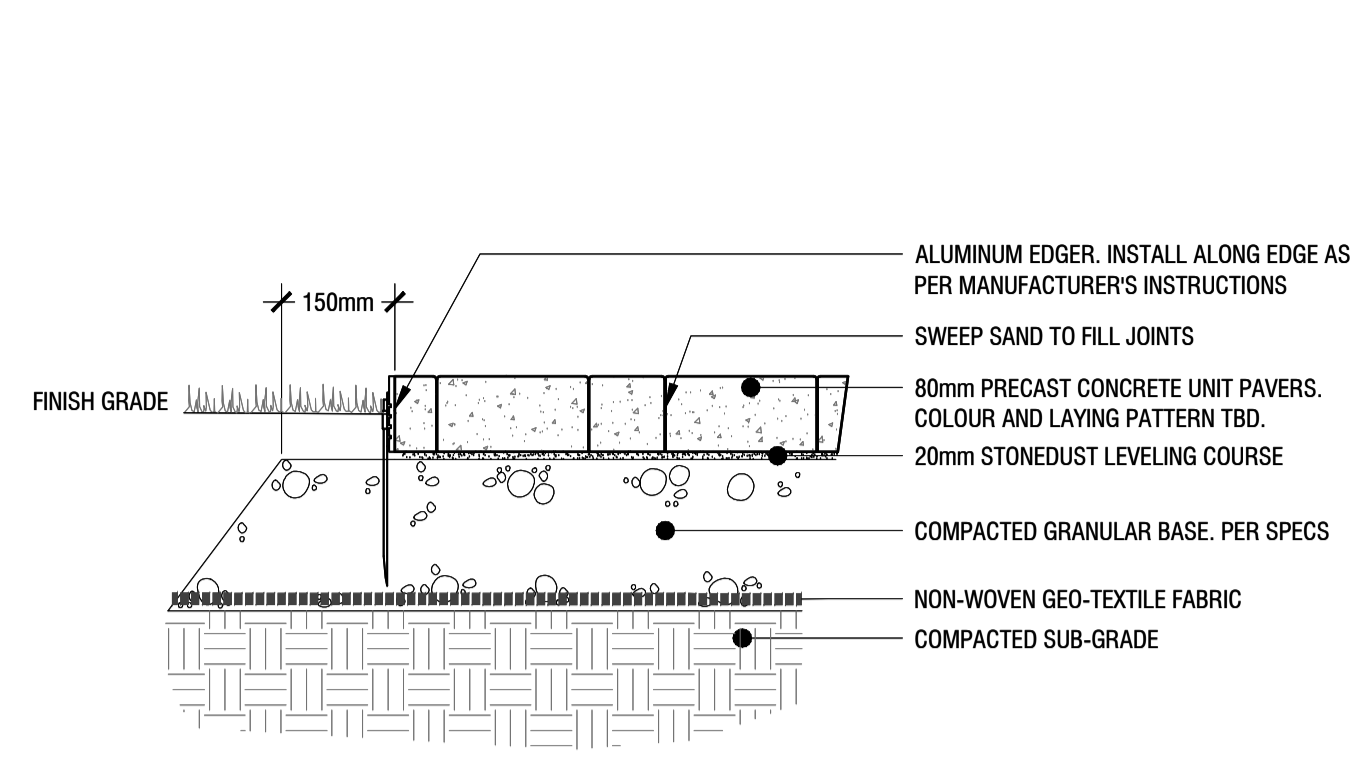
**56 CAPILANO**

drawing / dessin

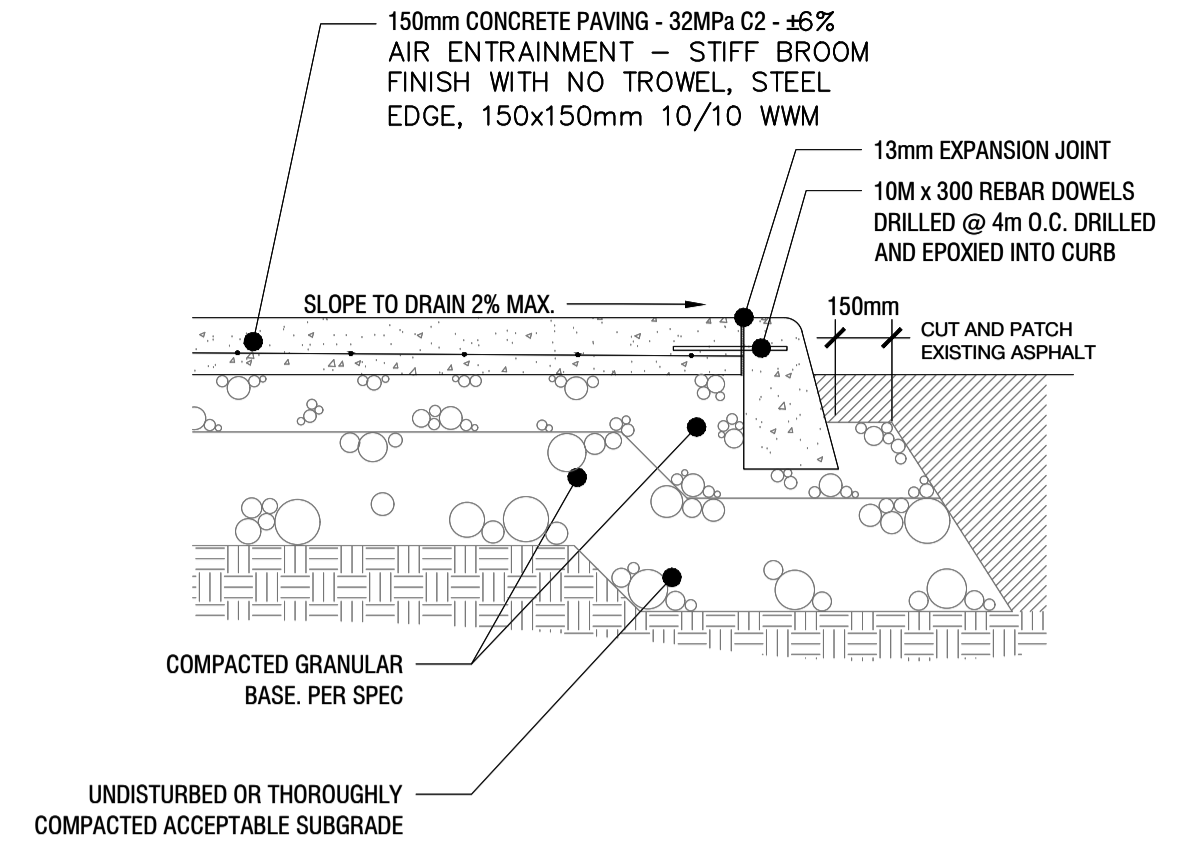
**LANDSCAPE DETAILS**

designed / conçu <b>BM</b>	drawn / dessiné <b>BM/MB</b>	reviewed / examiné <b>DF</b>
date <b>2023/01/26</b>		project number / No. du projet
drawing number / No. du dessin <b>L3 of 4</b>		

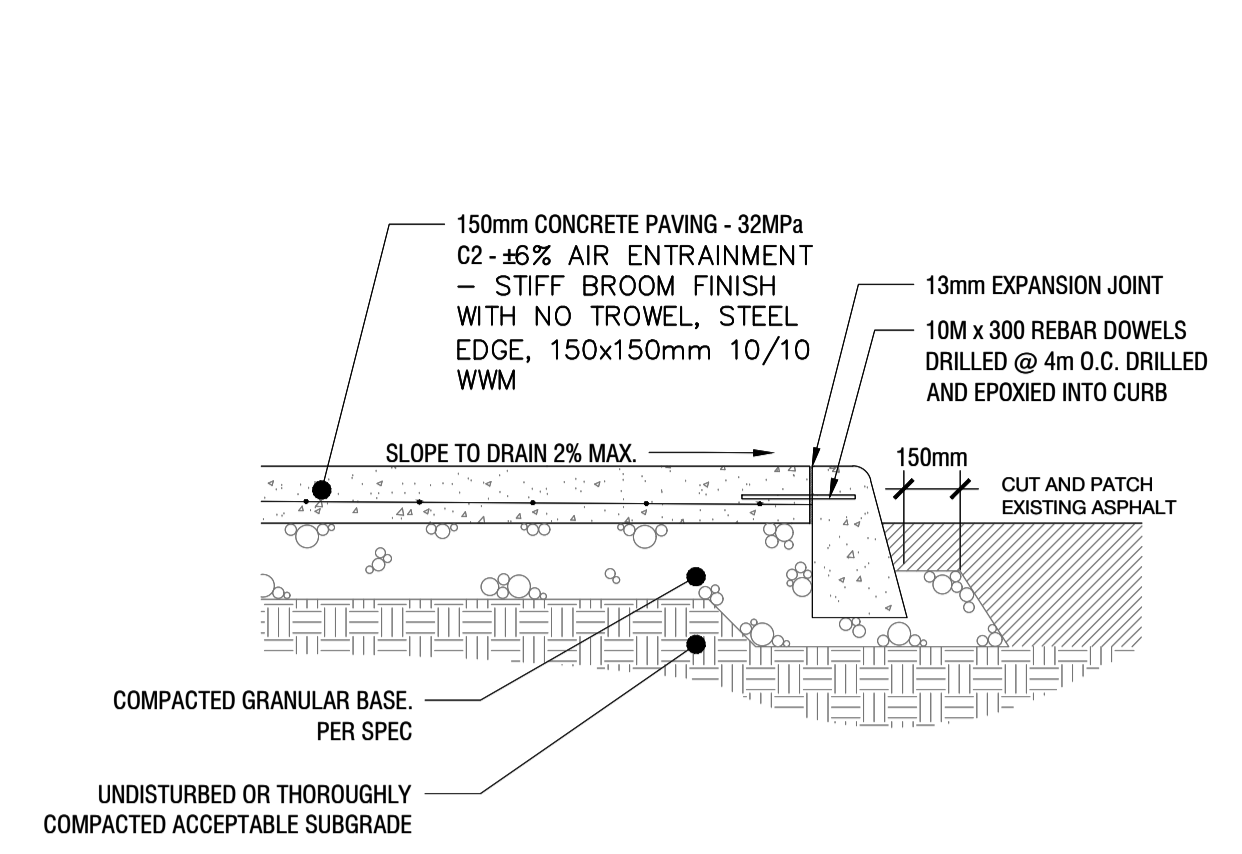
**PRELIMINARY**  
 NOT FOR CONSTRUCTION



**3 PRECAST PAVERS WITH ALUMINUM EDGE**  
**L3 NTS**



**2 CIP HEAVY DUTY CONCRETE PAVING DETAIL**  
**L3 NTS**

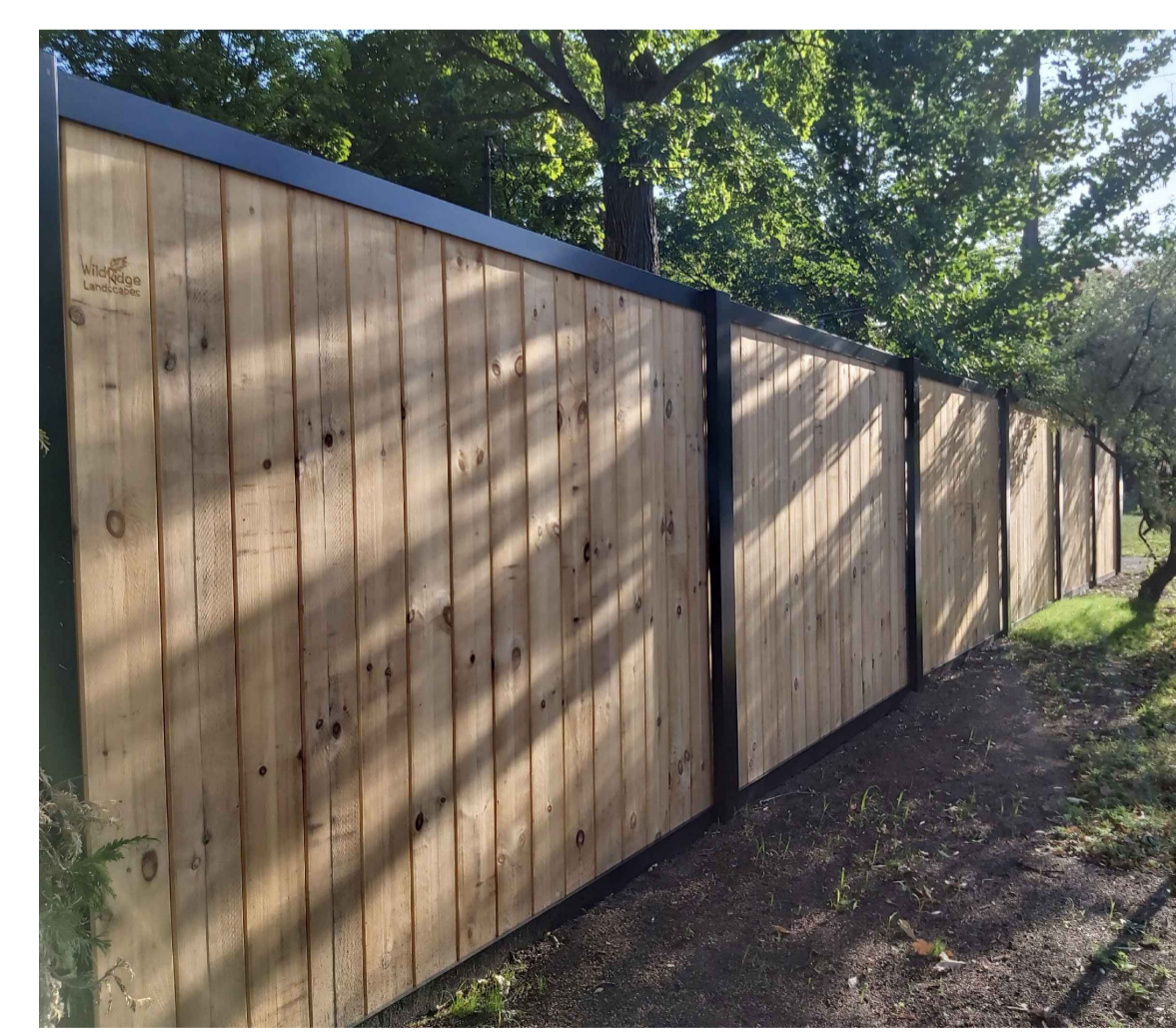


**1 CIP LIGHT DUTY CONCRETE PAVING DETAIL**  
**L3 NTS**



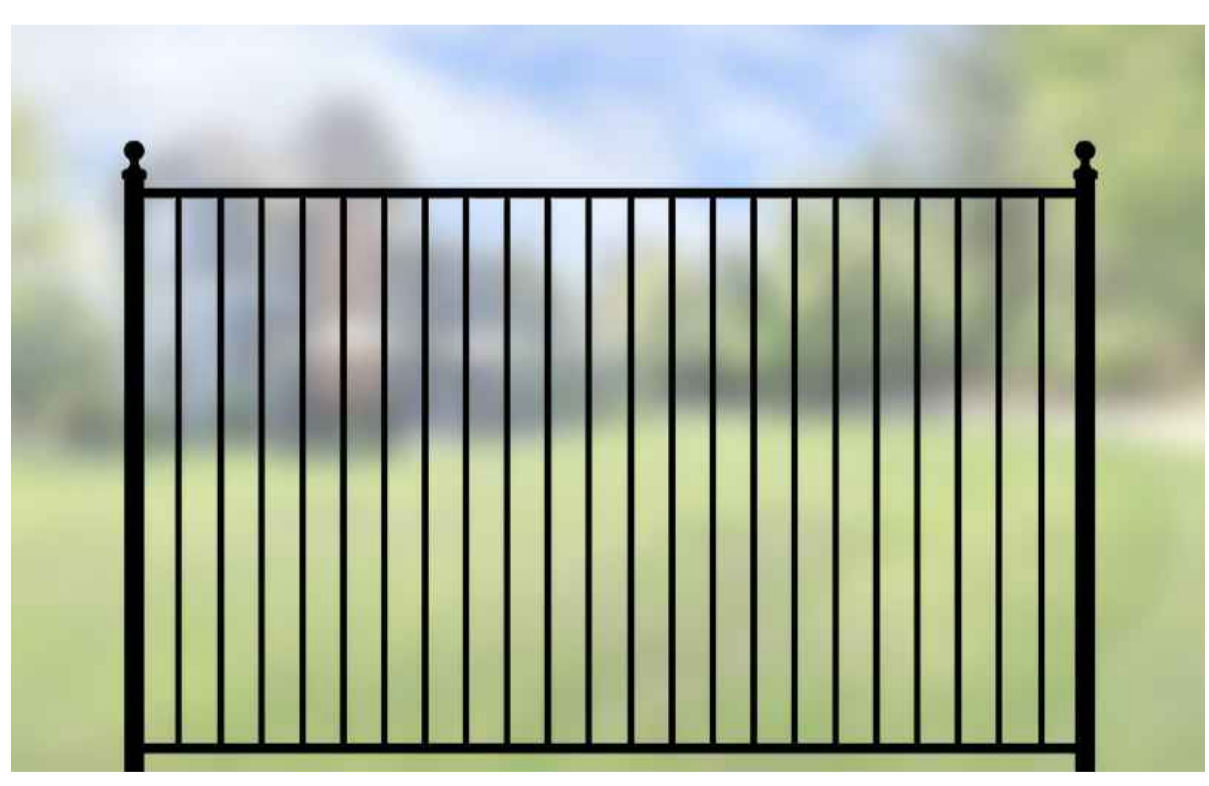
- NOTES:**
- PRODUCT TO BE 'GABLE ROOF RECTANGLE' BY POLIGON OR APPROVED EQUAL;
  - SHELTER ROOF DIMENSIONS TO BE 5m X 3.5m;
  - CONTRACTOR IS RESPONSIBLE FOR OBTAINING A BUILDING PERMIT;
  - MANUFACTURER SUPPLIED DRAWINGS AND SPECIFICATIONS FOR FOOTINGS AND STRUCTURE ARE REQUIRED TO BE SEALED BY A P.Eng LICENSED TO PRACTICE IN THE PROVINCE OF ONTARIO;
  - INSTALL PER MANUFACTURER'S INSTRUCTIONS.

**4 SHADE STRUCTURE**  
**L3 NTS**



- NOTES:**
- INSTALL 1.8m HEIGHT PRIVACY FENCE 150mm INSIDE PROPERTY LINE;
  - INSTALL PER MANUFACTURER'S INSTRUCTIONS;
  - PRODUCT TO BE 'ALCUF DP1 PRIVACY' BY ALCUF INTERNATIONAL INC. OR APPROVED EQUAL.

**5 WOOD FENCE DETAIL**  
**L3 NTS**



- NOTES:**
- INSTALL 1.2m POWDERCOATED ALUMINUM FENCE AND GATES, REFER TO LANDSCAPE PLANS FOR LOCATIONS;
  - INSTALL PER MANUFACTURER'S INSTRUCTIONS;
  - PRODUCT TO BE 'ELEGANT TRADITIONAL' WITH PYRAMID POST CAPS BY IRON EAGLE INDUSTRIES OR APPROVED EQUAL.

**6 ORNAMENTAL METAL FENCE AT UNIT PATIOS**  
**L3 NTS**



- NOTES:**
- INSTALL PER MANUFACTURER'S INSTRUCTIONS;
  - PRODUCT TO BE 'ARCHITECTURAL COLOUR COATED CHAIN LINK FENCE' BY MERCHANTS METALS OR APPROVED EQUAL.

**7 CHAINLINK FENCE**  
**L3 NTS**



