

1 CITY OF OTTAWA STANDARD TREE PROTECTION DETAIL
L1 n.t.s.

NOTES:

DO NOT SCALE DRAWINGS;

NOTES ARE APPLICABLE TO ALL DRAWINGS IN THE SET;

Fotenn Consultants Inc. IS NOT RESPONSIBLE FOR ACCURACY OF BASE INFORMATION;

REFER TO CIVIL ENGINEERING DRAWINGS FOR GRADING & SITE SERVICING INFORMATION;

THE CONTRACTOR IS RESPONSIBLE FOR CONFIRMING SITE CONDITIONS AND REPORTING ANY DISCREPANCIES TO THE LANDSCAPE ARCHITECT;

THE CONTRACTOR IS RESPONSIBLE FOR CONFIRMING EXACT LOCATIONS OF ALL UNDERGROUND SERVICES AND OBTAINING CLEARANCE FROM ALL APPLICABLE UTILITIES. PROPOSED WORKS FOUND TO BE IN CONFLICT WITH UNDERGROUND SERVICES MAY BE ADJUSTED AT THE DIRECTION OF THE LANDSCAPE ARCHITECT;

LANDSCAPE ELEMENTS SHOWN ARE SUBJECT TO THE FINAL LOCATION OF UNDERGROUND SERVICES AND UTILITIES;

DO NOT INSTALL TREES ON PROPERTY / LOT LINES OR WITHIN DRAINAGE EASEMENTS;

PERFORM WORK IN ACCORDANCE WITH DETAILS AND SPECIFICATIONS;

ALL PLANT MATERIAL SHALL BE No. 1 NURSERY STOCK AND SHALL MEET OR EXCEED THE SPECIFICATION OF THE Canadian Standards for Nursery Stock, AS PUBLISHED BY THE Canadian Nursery Landscape Association;

SPECIES SUBSTITUTIONS ARE NOT PERMITTED WITHOUT PRIOR WRITTEN APPROVAL OF THE LANDSCAPE ARCHITECT;

ALL UN-PAVED SURFACES TO RECEIVE 150mm DEPTH TOPSOIL & SOD.

IMPORTANT NOTICE FOR CONTRACTOR:

THE CITY OF OTTAWA REQUIRES A Certificate of Completion (F1) Landscape Works TO BE SUBMITTED AND SEALED BY THE LANDSCAPE ARCHITECT. CONTRACTORS ARE RESPONSIBLE FOR FAMILIARIZING THEMSELVES WITH THE REQUIREMENTS OF THIS PROCESS AND PROVIDING SUFFICIENT NOTICE TO THE LANDSCAPE ARCHITECT TO CONDUCT SITE REVIEWS DURING INSTALLATION OF TREES. THE 1 YEAR WARRANTY PERIOD SHALL NOT COMMENCE UNTIL THE LANDSCAPE ARCHITECT HAS SUBMITTED THE F1 Certificate.

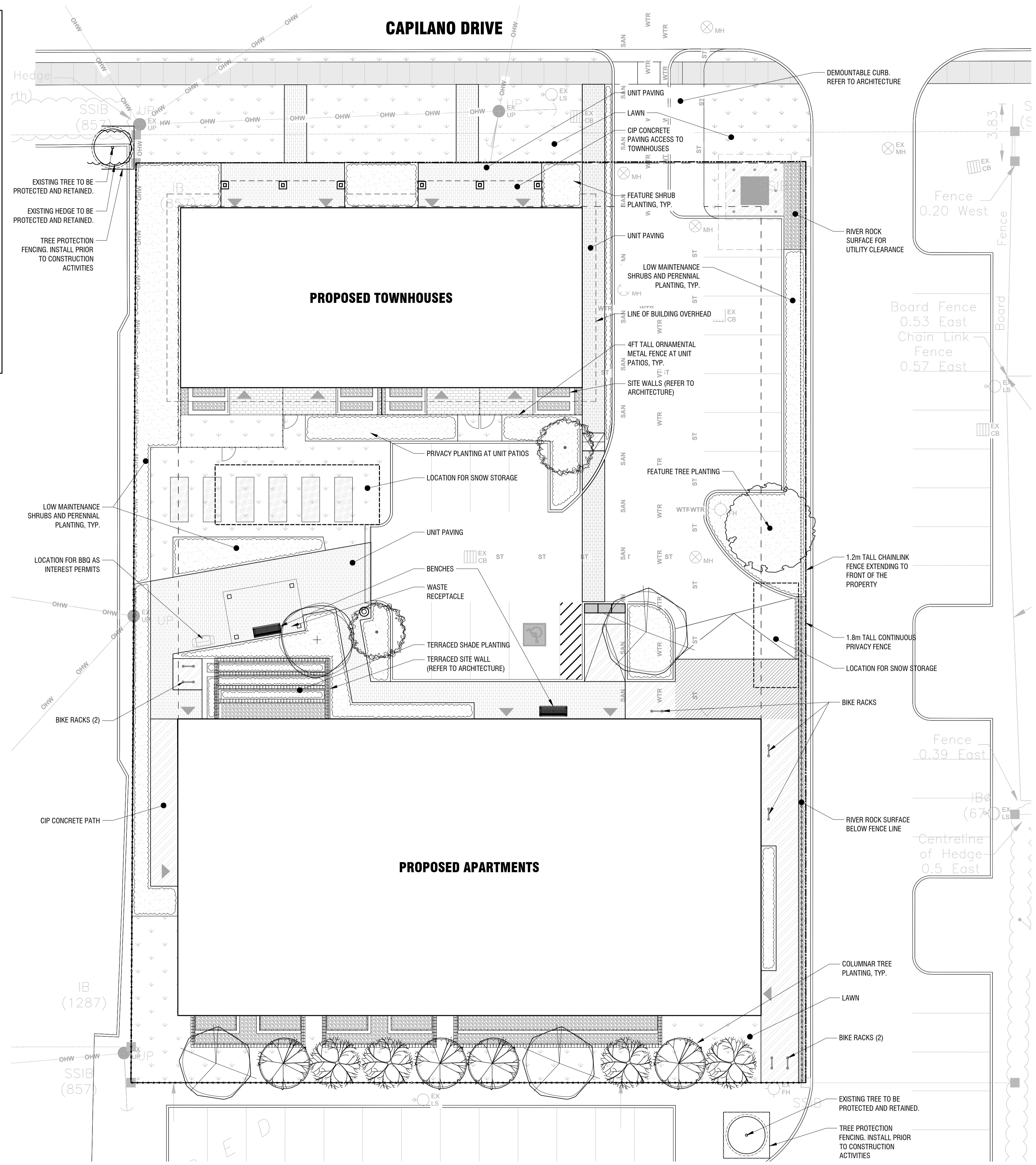
PRIOR TO INSTALLATION OF TREES, THE DEVELOPER WILL CONTACT THE PLANNING AND GROWTH MANAGEMENT AND FORESTRY SERVICES TO REVIEW THE SPECIES AND LOCATION OF TREES.

Allison Hamlin

ALLISON HAMLIN
MANAGER (A), DEVELOPMENT REVIEW WEST
PLANNING, REAL ESTATE & ECONOMIC DEVELOPMENT
DEPARTMENT, CITY OF OTTAWA

APPROVED
By Allison Hamlin at 4:15 pm, Nov 01, 2023

PRELIMINARY
NOT FOR CONSTRUCTION



2 LANDSCAPE PLAN
L1 1:150



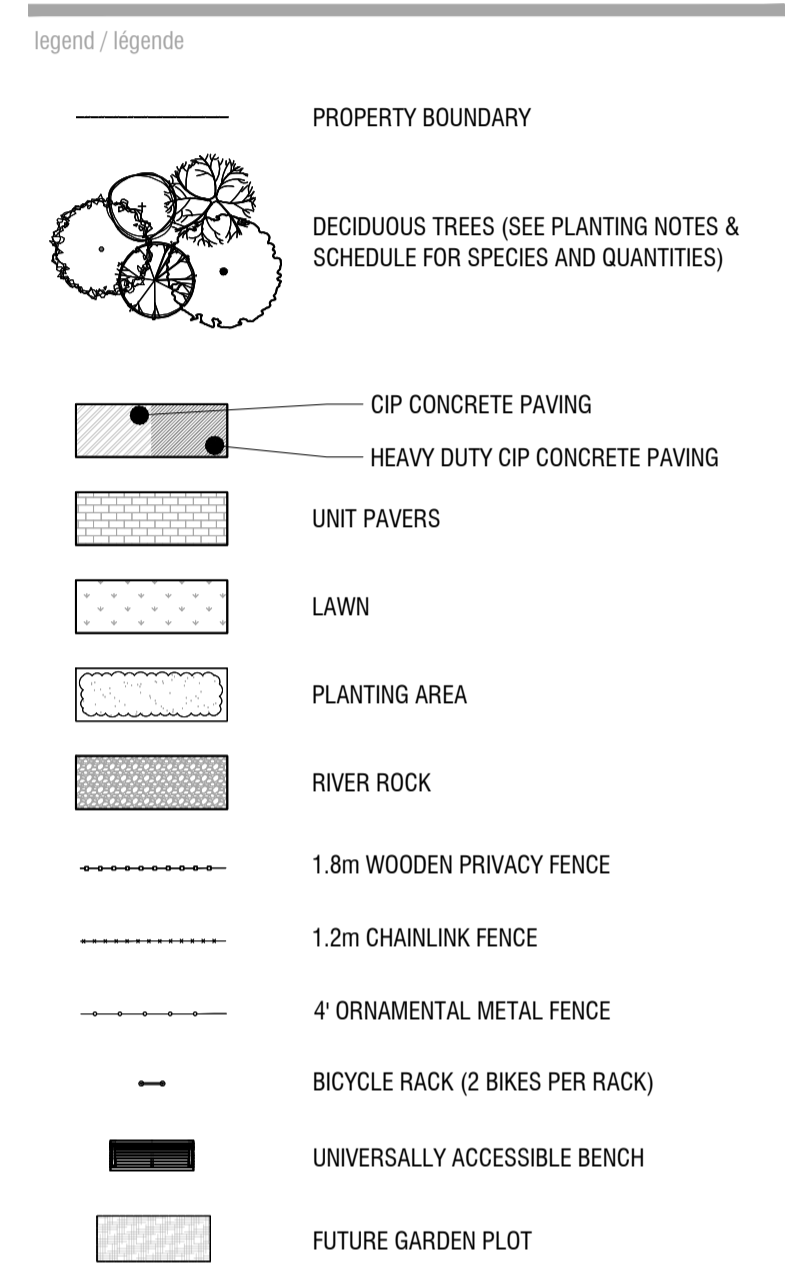
Copyright Reserved
The Copyrights to all designs and drawings are the property of Fotenn Consultants Inc. Unauthorised reproduction or use is forbidden. DO NOT SCALE DRAWING

Copyright réservés
Les droits d'auteur à tous les modèles et dessins sont la propriété de Fotenn Consultants Inc. Reproduction ou utilisation non autorisée est interdite. NE PAS L'ÉCHELLE DE DESSIN

Client / Client

OTTAWA SALUS CORPORATION

key plan / plan repère



rev'n	description / la description	yyyy/mm/dd
04	re-issue for SPA	2023/10/10
03	revised per City comments for SPA	2023/09/21
02	revised per City comments for SPA	2023/07/26
01	issue for Site Plan Application	2023/03/03
00	issue for Client review	2023/02/01

FOTENN Planning + Design
396 Cooper Street, Suite 300
Ottawa, ON, CANADA K2P 2H7
613.730.5709
fotenn.com

north / le nord stamp / le cachet

project / projet

56 CAPILANO

drawing / dessin

LANDSCAPE PLAN

designed / conçu	drawn / dessiné	reviewed / examiné
BM	BM/MB	DF
date	project number / No. du projet	
2023/01/26		

drawing number / No. du dessin

L1 of 4

PLOT INFORMATION: DWG NAME: P:\PROJECTS\252\Architectural\56 Capilano\56 Capilano\56 Capilano.dwg PLOT DATE: 2023-10-19 3:27:13 PM SHEET SIZE: 300x420mm PLOTTED BY: Binama Mitchell LAST SAVED BY: binama

D07-12-23-0028

PLANT SCHEDULE

TREES	QTY	BOTANICAL NAME	COMMON NAME	SIZE / CONDITION / SPACING
AG	1	Acer griseum	Paperbark Maple	60mm cal. / W.B.
ARA	2	Acer rubrum 'Armstrong'	Armstrong Red Maple	60mm cal. / W.B.
AL	2	Amelanchier laevis	Allegheny Serviceberry	50mm cal. / W.B. (single stem, tree form)
FT	1	Fagus sylvatica 'Tricolor'	Tricolor European Beech	60mm cal. / W.B.
LF	4	Liriodendron tulipifera 'Fastigiata'	Columnar Tulip Poplar	60mm cal. / W.B.
PT	1	Populus tremuloides	Quaking Aspen	50mm cal. / W.B.
QP	4	Quercus palustris 'Pringreen'	Green Pillar® Pin Oak	60mm cal. / W.B.

SHRUBS	QTY	BOTANICAL NAME	COMMON NAME	SIZE / CONDITION / SPACING
Fo	6	Forsythia ovata 'Ottawa'	Early Forsythia	100cm ht. / specimen quality / 5.0m sp.
Hv	1	Hamamelis virginiana	Common Witch Hazel	100cm ht. / specimen quality / 1.75m sp.
Po2	27	Physocarpus opulifolius 'Dart's Gold'	Dart's Gold Ninebark	#2 Pot / Refer to plan for spacing
Rr	34	Rosa rugosa	Rugosa Rose	#2 Pot / 90cm sp.
Ss	47	Sorbaria sorbifolia 'Sem'	Sem False Spiraea	#2 Pot / 90cm sp.

PERENNIALS & GRASSES	QTY	BOTANICAL NAME	COMMON NAME	SIZE / CONDITION / SPACING
An	43	Andropogon gerardii 'Dancing Wind'	Dancing Wind Big Bluestem	#1 Pot / Refer to plan for spacing
Ck	40	Calamagrostis x acutiflora 'Karl Foerster'	Karl Foerster Feather Reed Grass	#2 Pot / 75cm sp.
Pa2	19	Perovskia atriplicifolia	Russian Sage	#2 Pot / 75cm sp.

	HOSTA MIX Hosta x 'Halcyon' / Halcyon Hosta Hosta x 'Invincible' / Invincible Hosta Hosta x 'Queen of the Seas' / Queen of the Seas Hosta	80.9 m ² 132 132 59	#2 Pot / 75cm sp. #2 Pot / 75cm sp. #2 Pot / 100cm sp.
	DAYLILY MIX Hemerocallis x 'Joan Senior' / Joan Senior Daylily Hemerocallis x 'Ruby Stella' / Ruby Stella Daylily Hemerocallis x 'Stella de Oro' / Stella de Oro Daylily	38.5 m ² 160 160 160	#1 Pot / 45cm sp. #1 Pot / 45cm sp. #1 Pot / 45cm sp.
	FERN MIX Adiantum aethiopicum / Maidenhair Fern Athyrum filix-femina / Common Lady Fern Tiarella cordifolia / Foamflower	31.0 m ² 160 90 160	#1 Pot / 45cm sp. #1 Pot / 60cm sp. #1 Pot / 45cm sp.
	PERENNIAL MIX Achillea millefolium / Common Yarrow Aster dumosus 'Wood's Light Blue' / Wood's Light Blue Aster Echinacea purpurea / Coneflower Rudbeckia hirta / Black-eyed Susan	50.2 m ² 209 258 209 209	#1 Pot / 45cm sp. #1 Pot / 45cm sp. #1 Pot / 45cm sp. #1 Pot / 45cm sp.

PLANTING MIX NOTES:
DISTRIBUTE PLANTS EVENLY WITHIN EACH MIX TYPE TO ACHIEVE A UNIFORMLY BLENDED MIX IN EACH AREA

STANDARDS FOR TREE PLANTING:

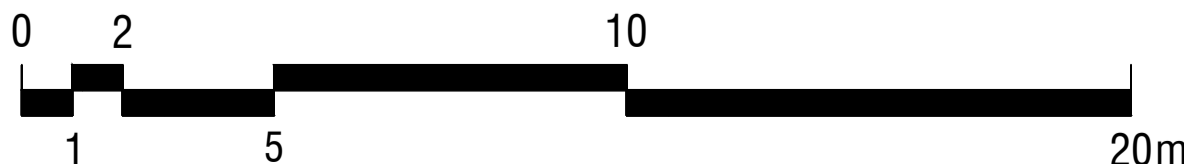
- NO PLANTING ON CORNERS OR ANYWHERE WHERE IT WOULD CREATE A SIGHT LINE CONCERN;
- MAINTAIN A MINIMUM DISTANCE OF 7.5m FROM ALL BUILDINGS;
- MAINTAIN A MINIMUM DISTANCE OF 2.5m FROM THE CURB FOR DECIDUOUS TREES AND 4.5m FOR CONIFEROUS TREES;
- MAINTAIN A MINIMUM DISTANCE OF 1.5m FOR DECIDUOUS (4.5m FOR CONIFERS) FROM ANY SIDEWALK OR PRIVATE WALKWAY;
- MAINTAIN A MINIMUM DISTANCE OF 1.2m FROM ALL DRIVEWAYS;
- MAINTAIN A MINIMUM DISTANCE OF 2.5m FROM COMMUNITY MAILBOXES, LIGHT STANDARDS, FIRE HYDRANTS AND NO PLANTING IN FRONT OF HYDRANTS;
- MAINTAIN A MINIMUM DISTANCE OF 3.0m FROM ALL HYDRO TRANSFORMERS;
- MAINTAIN A MINIMUM DISTANCE OF 1.0m FROM ALL UNDERGROUND SERVICES;
- MAINTAIN A MINIMUM DISTANCE OF 1.0m FROM ALL BELL AND CABLE BOXES;
- MAINTAIN A MINIMUM DISTANCE OF 10.0m FROM BUS SHELTERS

Allison Hamlin

ALLISON HAMLIN
MANAGER (A), DEVELOPMENT REVIEW WEST
PLANNING, REAL ESTATE & ECONOMIC DEVELOPMENT
DEPARTMENT, CITY OF OTTAWA

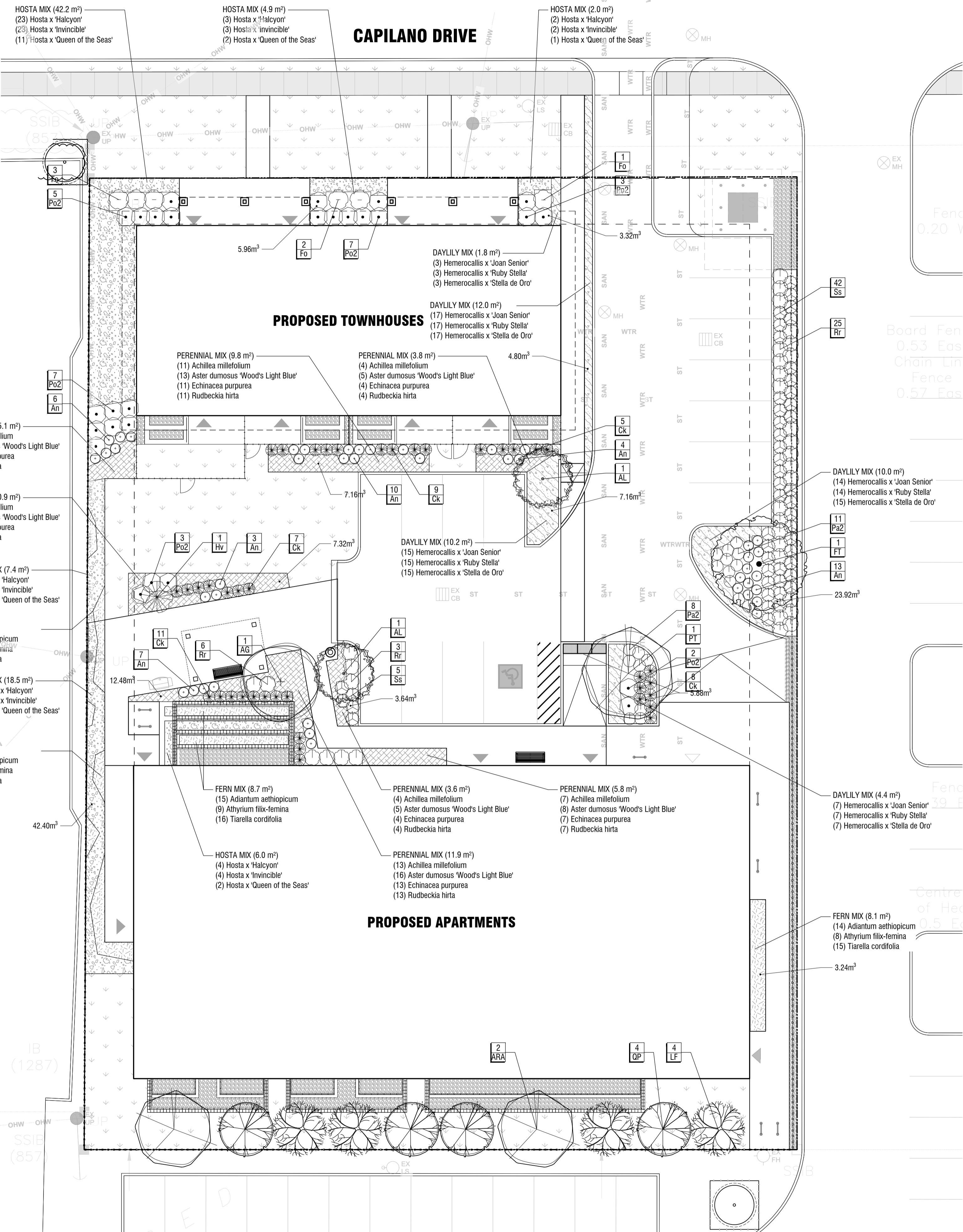
APPROVED

By Allison Hamlin at 4:16 pm, Nov 01, 2023



1
L2

PLANTING PLAN
1:150



Copyright Reserved
The Copyrights to all designs and drawings are the property of Fotenn Consultants Inc. Unauthorised reproduction or use is forbidden. DO NOT SCALE DRAWING
Copyright réservés
Les droits d'auteur à tous les modèles et dessins sont la propriété de Fotenn Consultants Inc. Reproduction ou utilisation non autorisée est interdite. NE PAS L'ÉCHELLE DE DESSIN

Client / Client
OTTAWA SALUS CORPORATION

key plan / plan repère

legend / légende

- PROPERTY BOUNDARY
- DECIDUOUS TREES (SEE PLANTING NOTES & SCHEDULE FOR SPECIES AND QUANTITIES)
- LAWN
- RIVER ROCK
- SHRUB AND PERENNIAL PLANTING (SEE PLANTING PLAN AND SCHEDULE FOR SPECIES, QUANTITIES AND PLANTING LOCATIONS)

rev'n	description / la description	yyyy/mm/dd
04	re-issue for SPA	2023/10/10
03	revised per City comments for SPA	2023/09/21
02	revised per City comments for SPA	2023/07/26
01	issue for Site Plan Application	2023/03/03
00	issue for Client review	2023/02/01

FOTENN Planning + Design

396 Cooper Street, Suite 300
Ottawa, ON, CANADA K2P 2H7

613.730.5709
fotenn.com

north / le nord stamp / le cachet

project / projet
56 CAPILANO

drawing / dessin

PLANTING PLAN

designed / conçu	drawn / dessiné	reviewed / examiné
BM	BM/MB	DF
date	project number / No. du projet	
2023/01/26		

drawing number / No. du dessin

L2 of 4

PLOT INFORMATION: DWG NAME: P:\PROJECTS\252\Architectural\56-Capilano\56-Capilano\56-Capilano\56-Capilano.dwg PLOT DATE: 2023-10-13 10:28:28 PM SHEET SIZE: 300x450mm PLOTTED BY: Binama Mohamed LAST SAVED BY: binama

OTTAWA SALUS CORPORATION

key plan / plan repère

legend / légende


Allison Hamlin

ALLISON HAMLIN
 MANAGER (A), DEVELOPMENT REVIEW WEST
 PLANNING, REAL ESTATE & ECONOMIC DEVELOPMENT
 DEPARTMENT, CITY OF OTTAWA

APPROVED
 By Allison Hamlin at 4:16 pm, Nov 01, 2023

rev'n	description / la description	yyyy/mm/dd
04	re-issue for SPA	2023/10/10
03	revised per City comments for SPA	2023/09/21
02	revised per City comments for SPA	2023/07/26
01	issue for Site Plan Application	2023/03/03
00	issue for Client review	2023/02/01

FOTENN Planning + Design
 396 Cooper Street, Suite 300
 Ottawa, ON, CANADA K2P 2H7
 613.730.5709
 fotenn.com

north / le nord stamp / le cachet


project / projet
56 CAPILANO

drawing / dessin

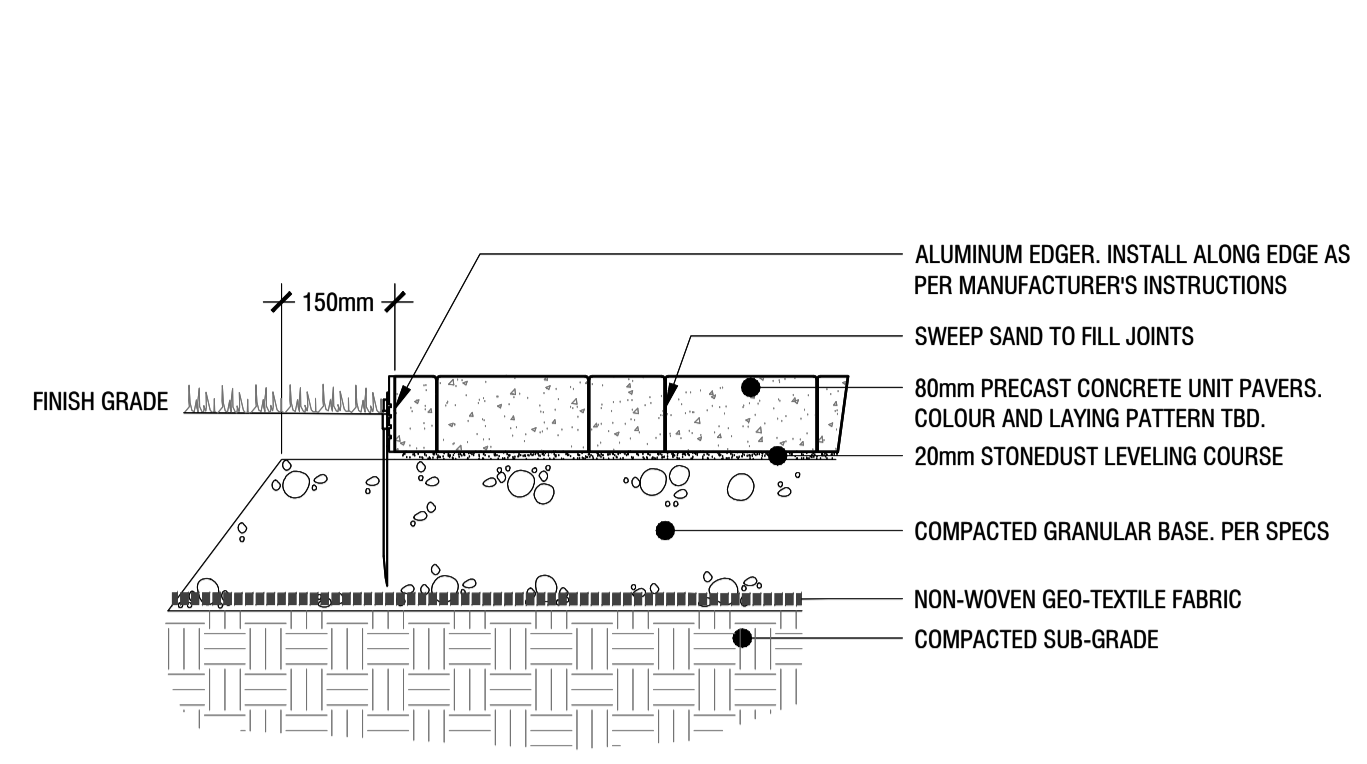
LANDSCAPE DETAILS

designed / conçu	drawn / dessiné	reviewed / examiné
BM	BM/MB	DF

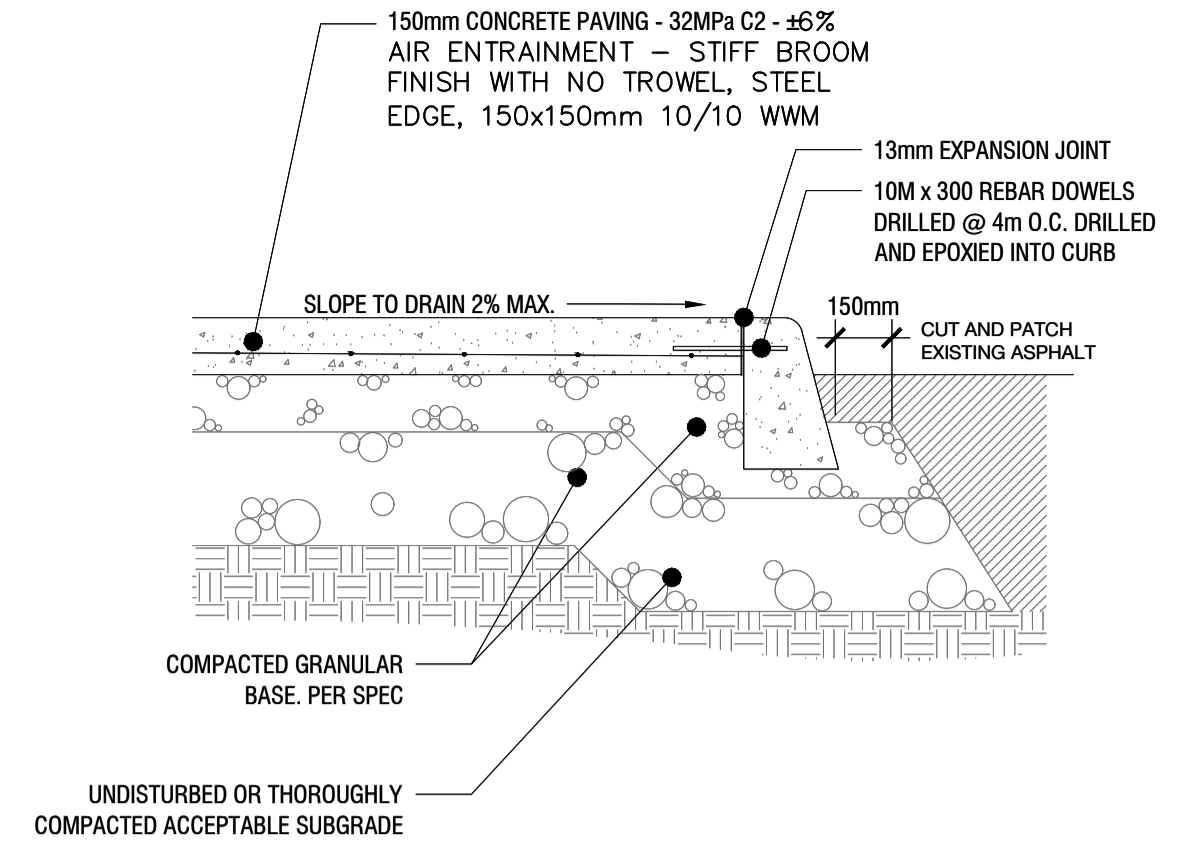
date
2023/01/26
 project number / No. du projet

drawing number / No. du dessin
L3 of 4

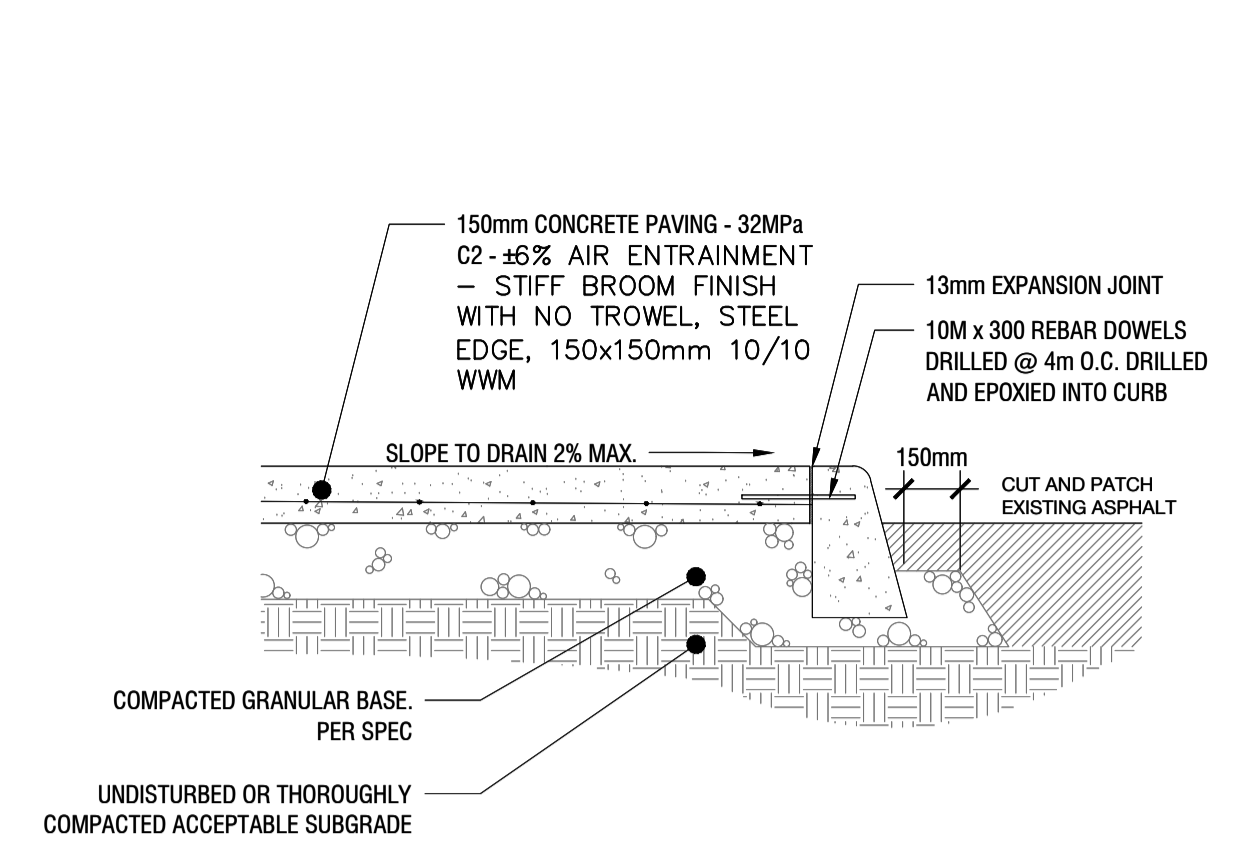
PRELIMINARY
 NOT FOR CONSTRUCTION



3 PRECAST PAVERS WITH ALUMINUM EDGE
L3 NTS



2 CIP HEAVY DUTY CONCRETE PAVING DETAIL
L3 NTS



1 CIP LIGHT DUTY CONCRETE PAVING DETAIL
L3 NTS



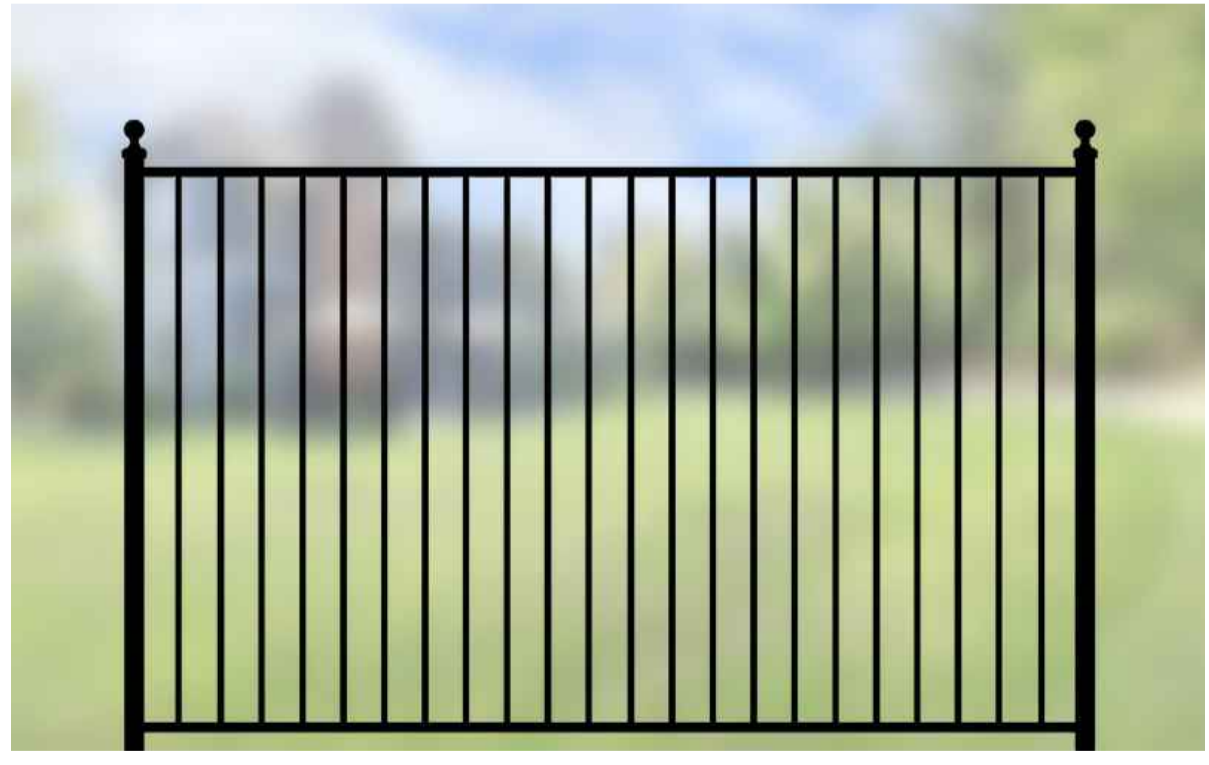
- NOTES:**
1. PRODUCT TO BE 'GABLE ROOF RECTANGLE' BY POLYGON OR APPROVED EQUAL;
 2. SHELTER ROOF DIMENSIONS TO BE 5m X 3.5m;
 3. CONTRACTOR IS RESPONSIBLE FOR OBTAINING A BUILDING PERMIT;
 4. MANUFACTURER SUPPLIED DRAWINGS AND SPECIFICATIONS FOR FOOTINGS AND STRUCTURE ARE REQUIRED TO BE SEALED BY A P.Eng LICENSED TO PRACTICE IN THE PROVINCE OF ONTARIO;
 5. INSTALL PER MANUFACTURER'S INSTRUCTIONS.

4 SHADE STRUCTURE
L3 NTS



- NOTES:**
1. INSTALL 1.8m HEIGHT PRIVACY FENCE 150mm INSIDE PROPERTY LINE;
 2. INSTALL PER MANUFACTURER'S INSTRUCTIONS;
 3. PRODUCT TO BE 'ALCUIF DP1 PRIVACY' BY ALCUIF INTERNATIONAL INC. OR APPROVED EQUAL.

5 WOOD FENCE DETAIL
L3 NTS



- NOTES:**
1. INSTALL 1.2m POWDERCOATED ALUMINUM FENCE AND GATES, REFER TO LANDSCAPE PLANS FOR LOCATIONS;
 2. INSTALL PER MANUFACTURER'S INSTRUCTIONS;
 3. PRODUCT TO BE 'ELEGANT TRADITIONAL' WITH PYRAMID POST CAPS BY IRON EAGLE INDUSTRIES OR APPROVED EQUAL.

6 ORNAMENTAL METAL FENCE AT UNIT PATIOS
L3 NTS



- NOTES:**
1. INSTALL PER MANUFACTURER'S INSTRUCTIONS;
 2. PRODUCT TO BE 'ARCHITECTURAL COLOUR COATED CHAIN LINK FENCE' BY MERCHANTS METALS OR APPROVED EQUAL.

7 CHAINLINK FENCE
L3 NTS

OTTAWA SALUS CORPORATION

key plan / plan repère

legend / légende

04	re-issue for SPA	2023/10/10
03	revised per City comments for SPA	2023/09/21
02	revised per City comments for SPA	2023/07/26
01	issue for Site Plan Application	2023/03/03
00	issue for Client review	2023/02/01
rev'n	description / la description	yyyy/mm/dd

FOTENN Planning + Design
396 Cooper Street, Suite 300
Ottawa, ON, CANADA K2P 2H7
613.730.5709
fotenn.com

north / le nord stamp / le cachet

56 CAPILANO

drawing / dessin

LANDSCAPE DETAILS


designed / conçu BM	drawn / dessiné BM/MB	reviewed / examiné DF
date 2023/01/26		
drawing number / No. du dessin		

L4 of 4
#18926

PRELIMINARY
NOT FOR CONSTRUCTION

200 SERIES

MTR-0250-00004
Legacy # MLWR250-32-ST



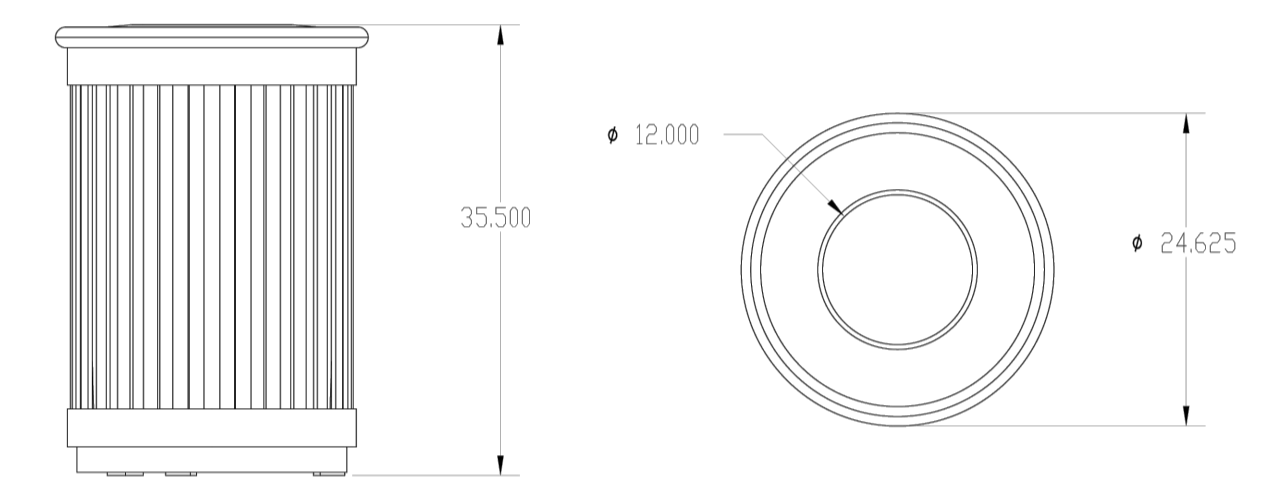
DESCRIPTION: 200 Series - 250 Trash Receptacle: Heavy Duty Steel Flat Bar and H.S. Steel Frame, Metal Lid, 1 x 32 Gallon Polyethylene Liner.

FINISH: All steel components are protected with E-Coat rust proofing. The Maglin Powdercoat System provides a durable finish on all metal surfaces.

INSTALLATION: The trash container is delivered pre-assembled. Holes (0.5") are provided in each mounting foot for securing to base.

TO SPECIFY: Select MTR-0250-00004
Choose:
- Powdercoat Color

HEIGHT: 35.5" (90.2cm) DIAMETER: 24.63" (62.5cm) WEIGHT: 200lbs (90kg)



MAGLIN Site Furniture
T 800 716 6506
F 877 260 9393
www.maglin.com
sales@maglin.com

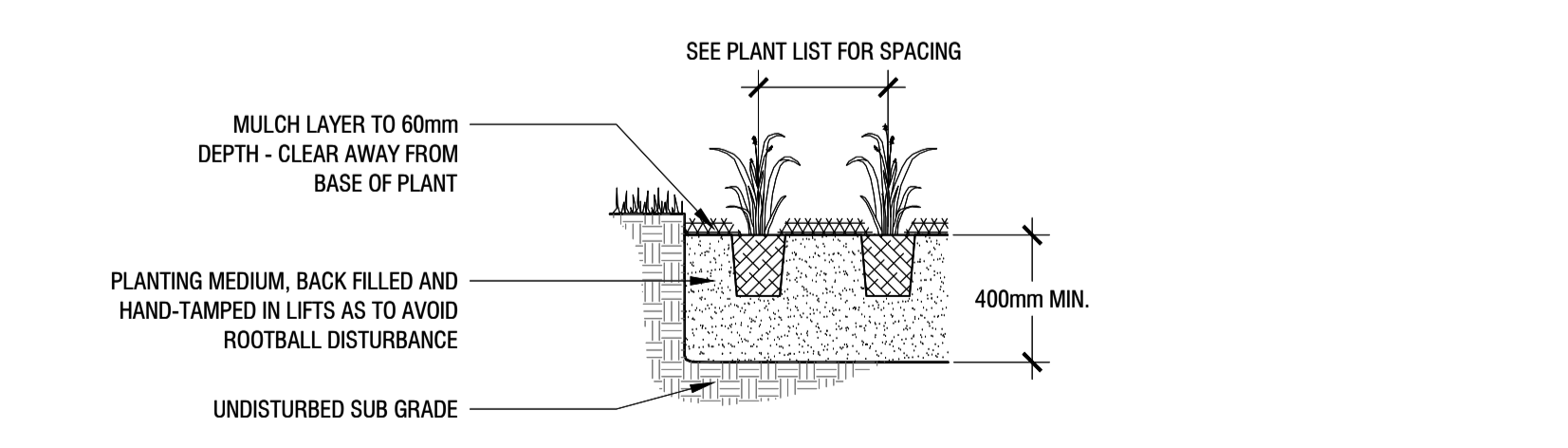
- All drawings, specifications, design and details on this page remain the property of Maglin Site Furniture Inc. and may not be used without Maglin authorization.
- Details and specifications may vary due to continuing improvements of our products.

3 WASTE RECEPTACLE
L4 NTS

Allison Hamlin

ALLISON HAMLIN
MANAGER (A), DEVELOPMENT REVIEW WEST
PLANNING, REAL ESTATE & ECONOMIC DEVELOPMENT
DEPARTMENT, CITY OF OTTAWA

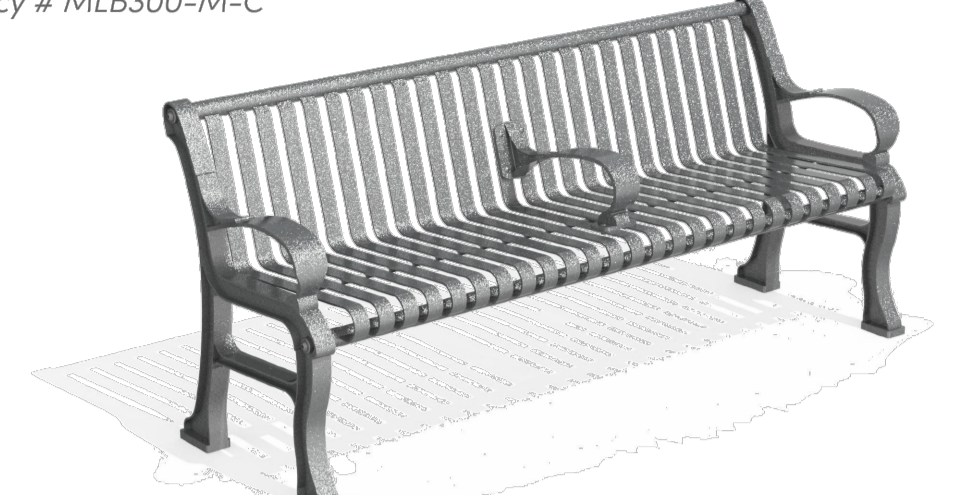
APPROVED
By Allison Hamlin at 4:16 pm, Nov 01, 2023



6 PERENNIAL PLANTING DETAIL
L4 1:20

300 SERIES

MBE-0300-00016
Legacy # MLB300-M-C



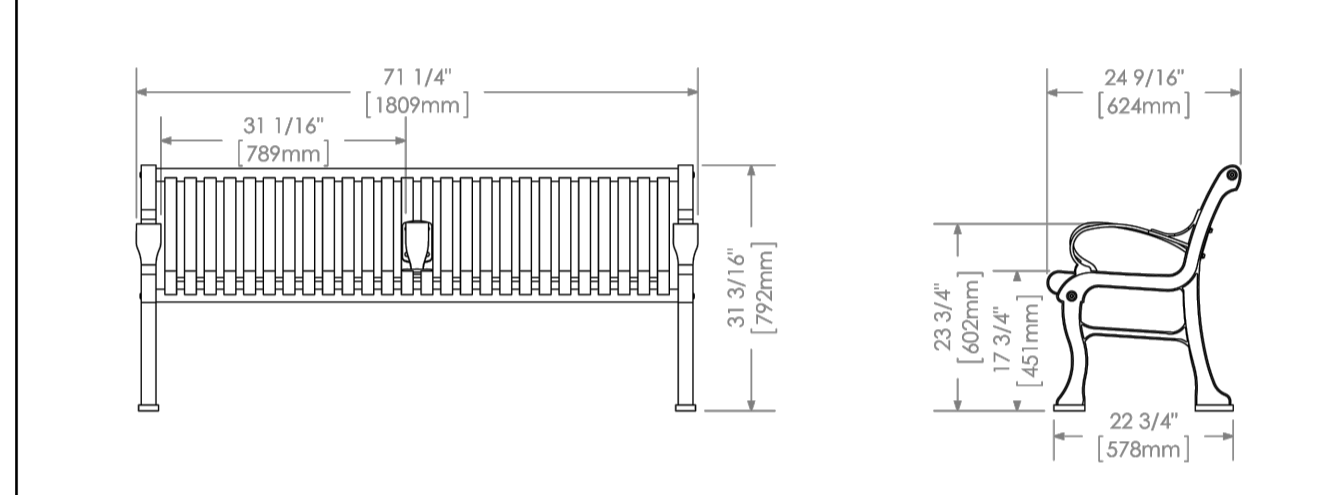
MATERIALS: Bench ends are made from solid cast aluminum. The seat employs flat bar straps and H.S. steel tube.

FINISH: All steel components are protected with E-Coat rust proofing. The Maglin Powdercoat System provides a durable finish on all metal surfaces.

INSTALLATION: The bench is delivered pre-assembled. Holes (0.5") are provided in each foot for securing to base.

TO SPECIFY: Select MBE-0300-00016
Choose:
- Powdercoat Color

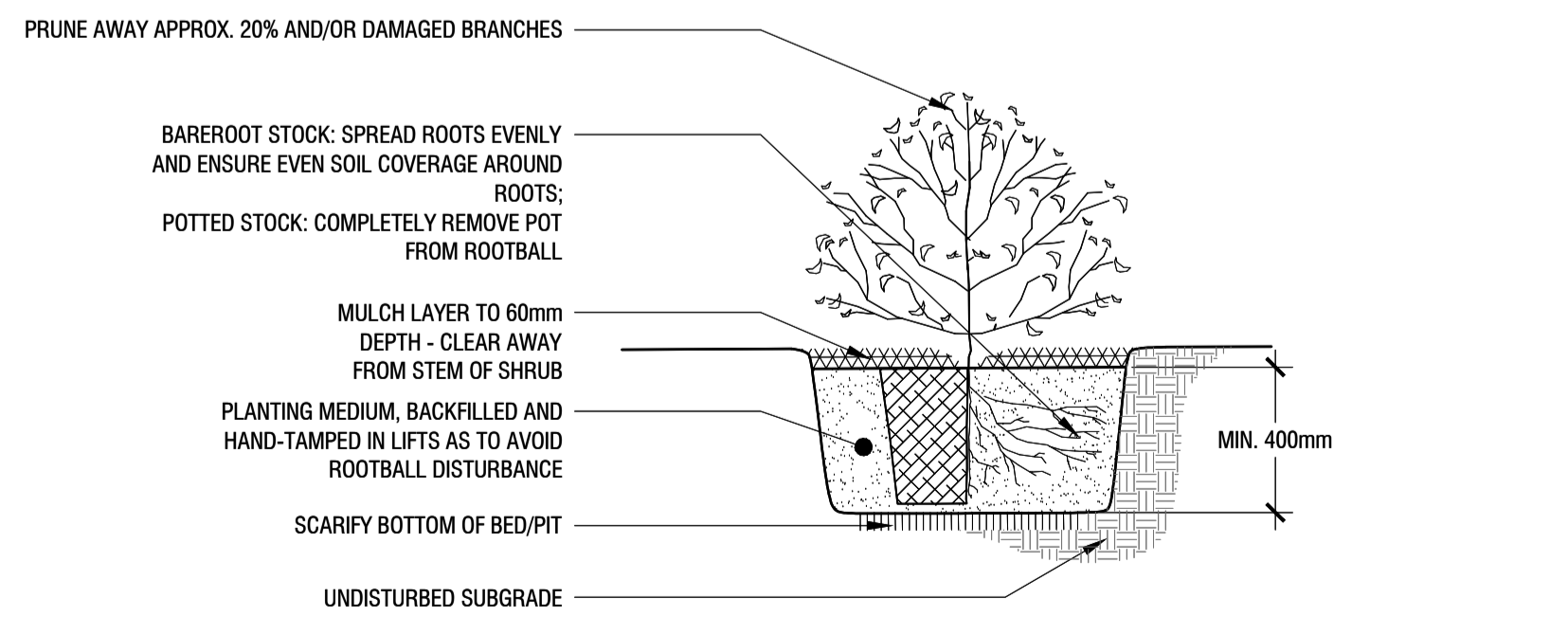
HEIGHT: 31.19" (79.2cm) LENGTH: 71.25" (180.9cm) DEPTH: 24.56" (62.4cm) WEIGHT: 134.29lbs (60.92kg)



MAGLIN Site Furniture
T 800 716 6506
F 877 260 9393
www.maglin.com
sales@maglin.com

- All drawings, specifications, design and details on this page remain the property of Maglin Site Furniture Inc. and may not be used without Maglin authorization.
- Details and specifications may vary due to continuing improvements of our products.


2 BENCH
L4 NTS



5 SHRUB PLANTING DETAIL
L4 1:20

500 SERIES

MBR-0500-00003
Legacy # MBR500-S



Sustainability Facts

Unit Size	One (1) MBR-0500-00001 Bike Rack
Carbon footprint (GWP)	103 kg CO2-Eq <small>Measured in kilograms of carbon dioxide equivalent</small>
Total energy use (TPE)	1770 MJ-Eq <small>Measured in megajoules of energy equivalent</small>
Water use (WDP)	0.843 m3 water <small>Measured in cubic metres of water</small>
Material recyclability	100%

LEED v4.1 Credits

Type III Environmental Product Declaration

Material Inventory

Low VOC finishes

Free of Red List substances

*Full EPD can be referenced for more information: https://www.epdregistration.com/maglin/

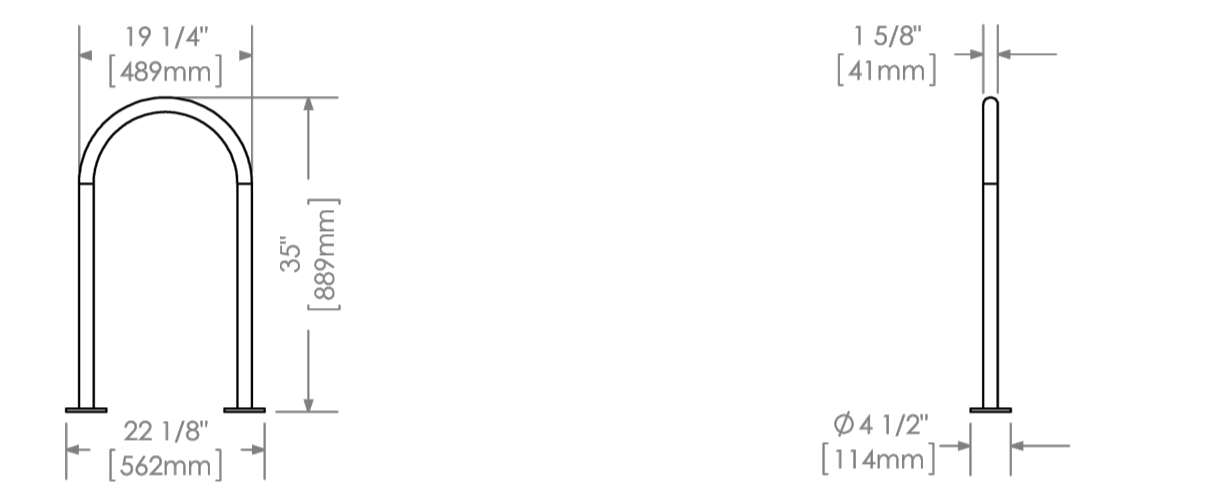
DESCRIPTION: 500 Series - 500 Bike Rack: H.S. Steel Tube, Surface Mount, 2 Bike Configuration

FINISH: All steel components are protected with E-Coat rust proofing. The Maglin Powdercoat System provides a durable finish on all metal surfaces.

INSTALLATION: The bike rack is delivered pre-assembled. It is available with either a surface mount or direct burial installation option.

TO SPECIFY: Select MBR-0500-00003
Choose:
- Powdercoat Color

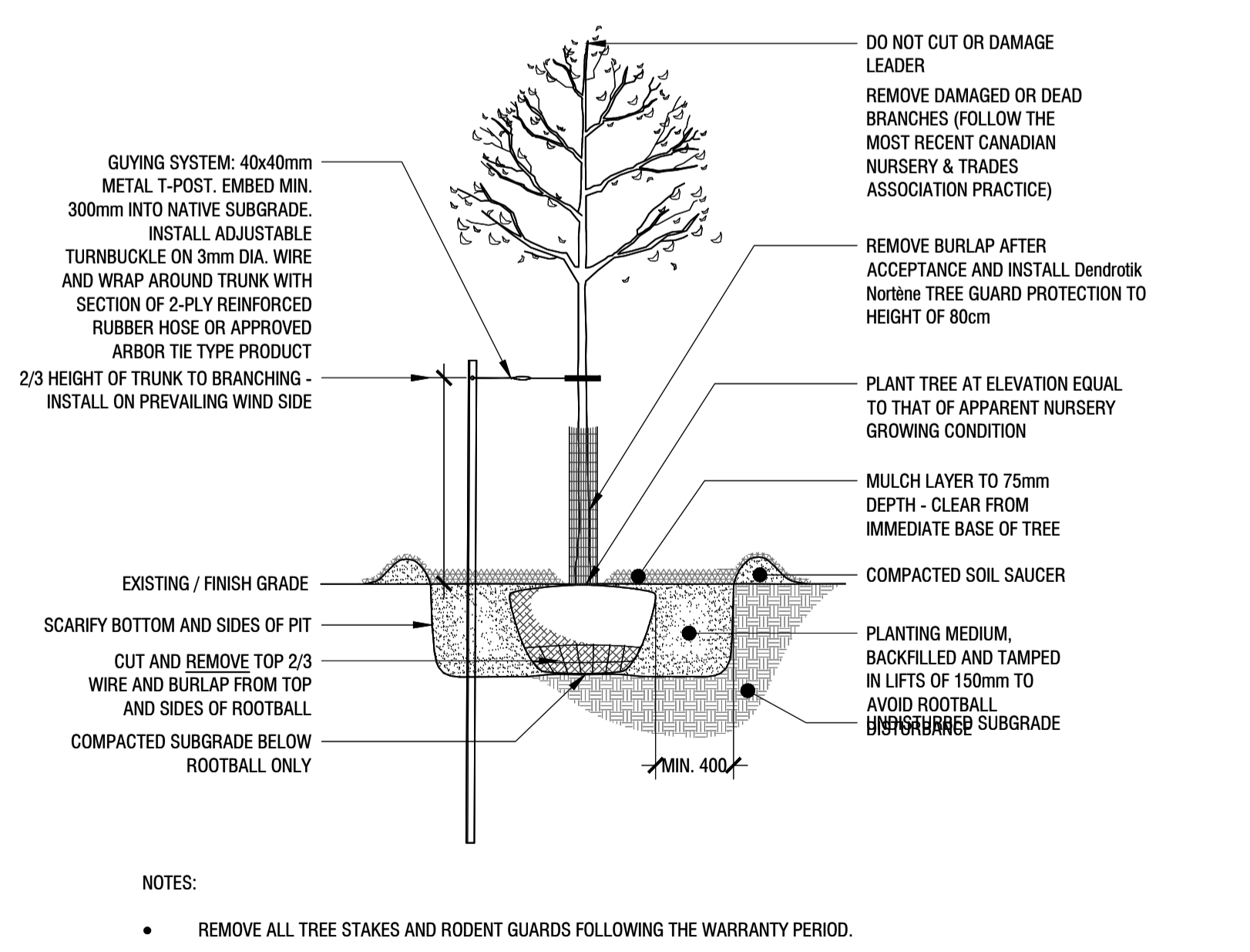
HEIGHT: 35" (88.9cm) LENGTH: 19.25" (48.9cm) WEIGHT: 13.27 lbs (6.0kg)



MAGLIN Site Furniture
T 800 716 6506
F 877 260 9393
www.maglin.com
sales@maglin.com

- All drawings, specifications, design and details on this page remain the property of Maglin Site Furniture Inc. and may not be used without Maglin authorization.
- Details and specifications may vary due to continuing improvements of our products.

1 BIKE RACK
L4 NTS



4 DECIDUOUS TREE PLANTING DETAIL
L4 1:30

PLOT INFORMATION: DWG NAME: P:\PROJECTS\2537\Architectural\56\Capilano\56-Capilano\56-Capilano-SPA\56-Capilano-SPA.dwg PLOT DATE: 2023-10-18 12:52:38 PM SHEET SIZE: 300x420mm PLOT DATE: 2023-10-18 12:52:38 PM SHEET SIZE: 300x420mm PLOTTED BY: Binama Mitchell LAST SAVED BY: binama

D07-12-23-0028