

1 CITY OF OTTAWA STANDARD TREE PROTECTION DETAIL
L1 n.t.s.

NOTES:

DO NOT SCALE DRAWINGS.

NOTES ARE APPLICABLE TO ALL DRAWINGS IN THE SET.

Fotenn Consultants Inc. IS NOT RESPONSIBLE FOR ACCURACY OF BASE INFORMATION.

REFER TO CIVIL ENGINEERING DRAWINGS FOR GRADING & SITE SERVICING INFORMATION.

THE CONTRACTOR IS RESPONSIBLE FOR CONFIRMING SITE CONDITIONS AND REPORTING ANY DISCREPANCIES TO THE LANDSCAPE ARCHITECT.

THE CONTRACTOR IS RESPONSIBLE FOR CONFIRMING EXACT LOCATIONS OF ALL UNDERGROUND SERVICES AND OBTAINING CLEARANCE FROM ALL APPLICABLE UTILITIES. PROPOSED WORKS FOUND TO BE IN CONFLICT WITH UNDERGROUND SERVICES MAY BE ADJUSTED AT THE DIRECTION OF THE LANDSCAPE ARCHITECT.

LANDSCAPE ELEMENTS SHOWN ARE SUBJECT TO THE FINAL LOCATION OF UNDERGROUND SERVICES AND UTILITIES.

DO NOT INSTALL TREES ON PROPERTY / LOT LINES OR WITHIN DRAINAGE EASEMENTS.

PERFORM WORK IN ACCORDANCE WITH DETAILS AND SPECIFICATIONS.

ALL PLANT MATERIAL SHALL BE No. 1 NURSERY STOCK AND SHALL MEET OR EXCEED THE SPECIFICATION OF THE Canadian Standards for Nursery Stock, AS PUBLISHED BY THE Canadian Nursery Landscape Association.

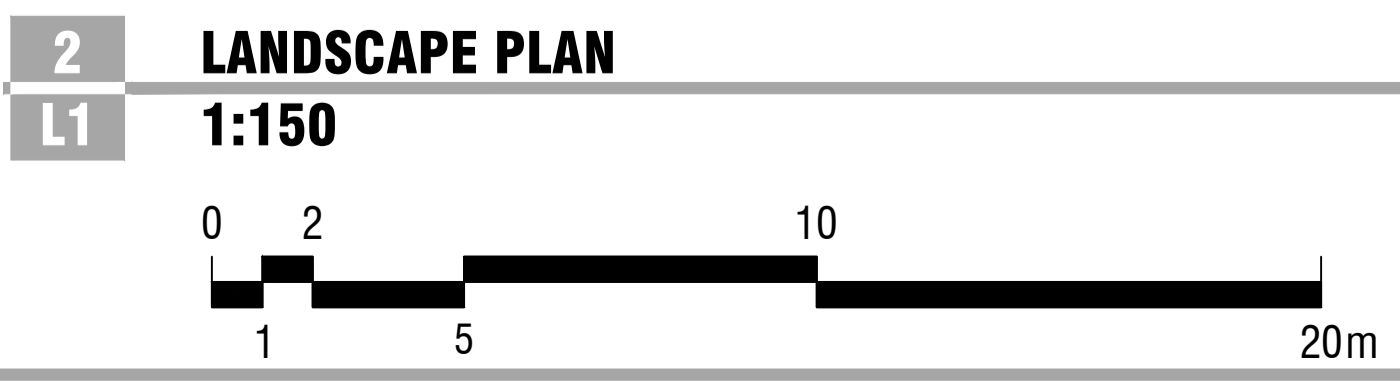
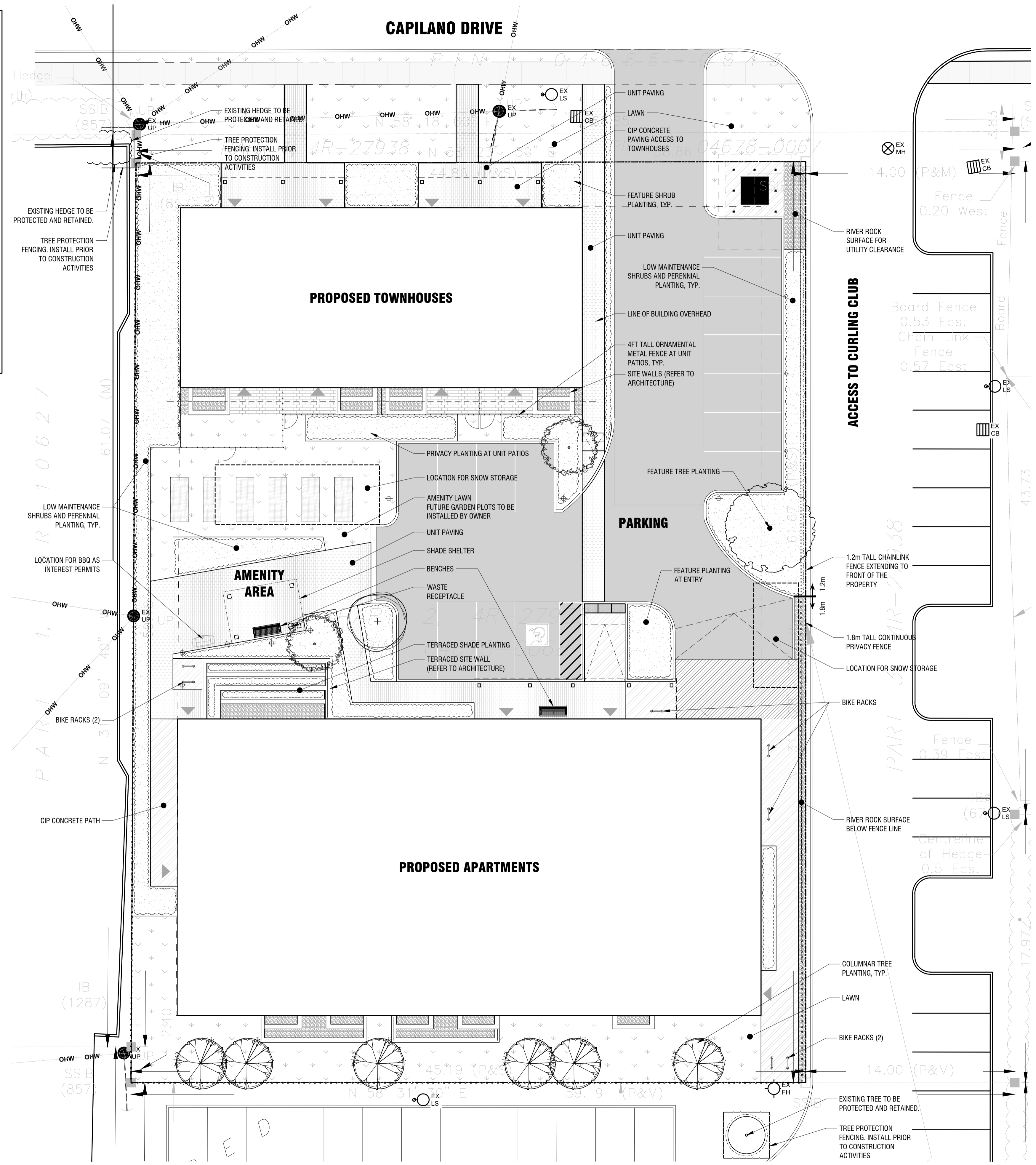
SPECIES SUBSTITUTIONS ARE NOT PERMITTED WITHOUT PRIOR WRITTEN APPROVAL OF THE LANDSCAPE ARCHITECT.

ALL UN-PAVED SURFACES TO RECEIVE 150mm DEPTH TOPSOIL & SOD.

IMPORTANT NOTICE FOR CONTRACTOR:

THE CITY OF OTTAWA REQUIRES A Certificate of Completion (F1) Landscape Works TO BE SUBMITTED AND SEALED BY THE LANDSCAPE ARCHITECT. CONTRACTORS ARE RESPONSIBLE FOR FAMILIARIZING THEMSELVES WITH THE REQUIREMENTS OF THIS PROCESS AND PROVIDING SUFFICIENT NOTICE TO THE LANDSCAPE ARCHITECT TO CONDUCT SITE REVIEWS DURING INSTALLATION OF TREES. THE 1 YEAR WARRANTY PERIOD SHALL NOT COMMENCE UNTIL THE LANDSCAPE ARCHITECT HAS SUBMITTED THE F1 Certificate.

PRIOR TO INSTALLATION OF TREES, THE DEVELOPER WILL CONTACT THE PLANNING AND GROWTH MANAGEMENT AND FORESTRY SERVICES TO REVIEW THE SPECIES AND LOCATION OF TREES.



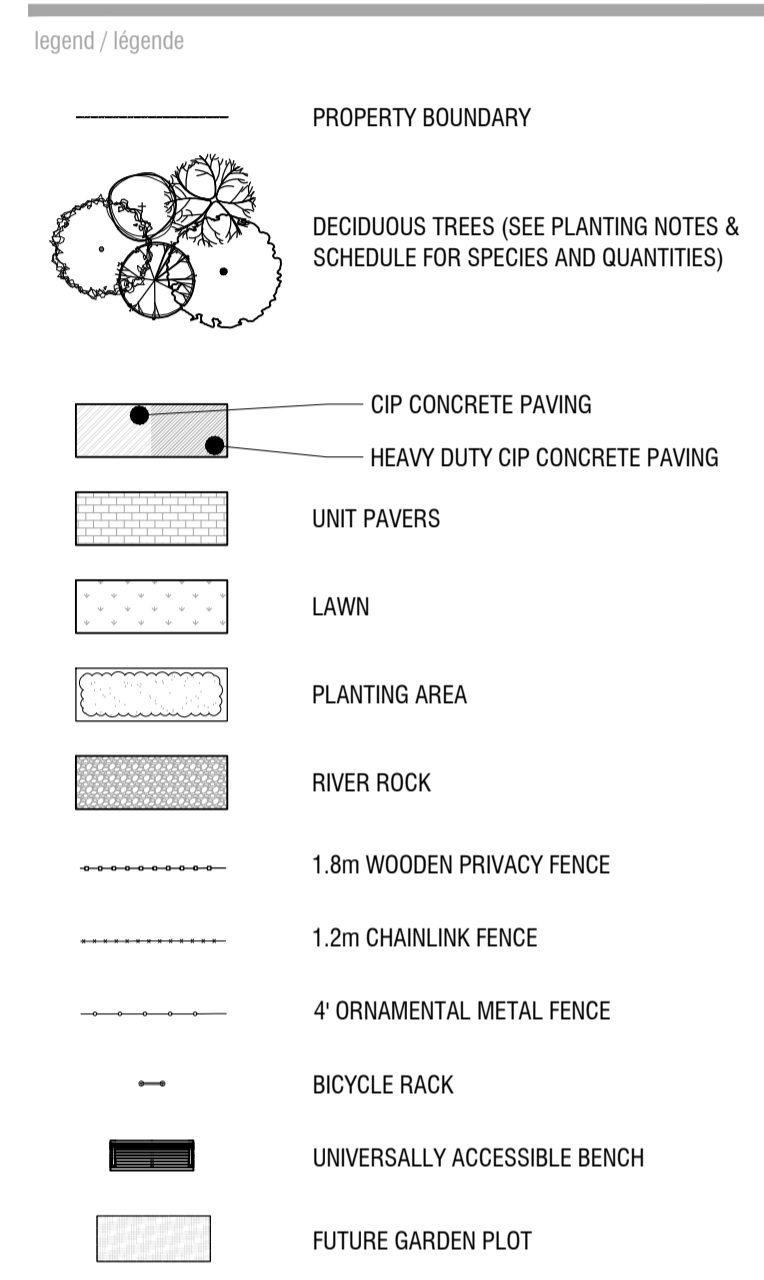
Copyright Reserved
The Copyrights to all designs and drawings are the property of Fotenn Consultants Inc. Unauthorized reproduction or use is forbidden. DO NOT SCALE DRAWING.

Copyright réservés
Les droits d'auteur à tous les modèles et dessins sont la propriété de Fotenn Consultants Inc. Reproduction ou utilisation non autorisée est interdite. NE PAS L'ÉCHELLE DE DESSIN.

OTTAWA SALUS CORPORATION

key plan / plan repère

Client / Client



rev'n	description / la description	yyyy/mm/dd
01	Issue for Site Plan Application	2023/03/03
00	Issue for Client review	2023/02/01

FOTENN Planning + Design

396 Cooper Street, Suite 300
Ottawa, ON, CANADA K2P 2H7

613.730.5709
fotenn.com

north / le nord

stamp / le cachet

project / projet

56 CAPILANO

drawing / dessin

LANDSCAPE PLAN

designed / conçu
BM

drawn / dessiné
BM/MB

reviewed / examiné
DF

date
2023/01/26

project number / No. du projet

drawing number / No. du dessin

L1 of 4

PLOT INFORMATION: DWG NAME: P:\PROJECTS\253\Architectural\56 Capilano\56 Capilano - Landscape Development\PLANS\Rev02-56Capilano - Landscape.dwg PLOT DATE: 2023-01-26 2:28:19 PM SHEET SIZE: 600x900 (mm) PLOTTER: HP DesignJet 5600 Plotter PLOT DATE: 2023-01-26 2:28:19 PM SHEET SIZE: 600x900 (mm) PLOTTER: HP DesignJet 5600 Plotter PLOT DATE: 2023-01-26 2:28:19 PM SHEET SIZE: 600x900 (mm) PLOTTER: HP DesignJet 5600 Plotter

PLANT SCHEDULE

TREES	QTY	BOTANICAL NAME	COMMON NAME	SIZE / CONDITION / SPACING
AR2	2	Acer ginnala 'Ruby Slippers'	Ruby Slippers Amur Maple	50mm cal. / W.B.
CA3	1	Cercis canadensis 'Ace of Hearts'	Ace of Hearts Eastern Redbud	50mm cal. / W.B. (single stem, tree form)
FT	1	Fagus sylvatica 'Tricolor'	Tricolor European Beech	60mm cal. / W.B.
QP2	6	Quercus palustris 'Pringreen'	Green Pillar® Pin Oak	60mm cal. / W.B.

SHRUBS	QTY	BOTANICAL NAME	COMMON NAME	SIZE / CONDITION / SPACING
Fo	6	Forsythia ovata 'Ottawa'	Early Forsythia	100cm ht. / specimen quality / 5.0m sp.
Hv	1	Hamamelis virginiana	Common Witch Hazel	---
Po2	28	Physocarpus opulifolius 'Dart's Gold'	Dart's Gold Ninebark	---
Rr	36	Rosa rugosa	Rugosa Rose	#2 Pot / 90cm sp.
Ss	48	Sorbaria sorbifolia 'Sem'	Sem False Spiraea	#2 Pot / 90cm sp.

PERENNIALS & GRASSES	QTY	BOTANICAL NAME	COMMON NAME	SIZE / CONDITION / SPACING
Ck	40	Calamagrostis x acutiflora 'Karl Foerster'	Karl Foerster Feather Reed Grass	#2 Pot / 75cm sp.
Pr2	43	Pennisetum setaceum 'Rubrum'	Purple Fountain Grass	#2 Pot / 75cm sp.
Pa2	19	Perovskia atriplicifolia	Russian Sage	#2 Pot / 75cm sp.

HOSTA MIX	QTY	SIZE	SPACING
Hosta x 'Halcyon' / Halcyon Hosta	132	0.8m	oc
Hosta x 'Invincible' / Invincible Hosta	132	0.8m	oc
Hosta x 'Queen of the Seas' / Queen of the Seas Hosta	59	1.2m	oc

DAYLILY MIX	QTY	SIZE	SPACING
Hemerocallis x 'Joan Senior' / Joan Senior Daylily	154	0.5m	oc
Hemerocallis x 'Ruby Stella' / Ruby Stella Daylily	154	0.5m	oc
Hemerocallis x 'Stella de Oro' / Stella de Oro Daylily	154	0.5m	oc

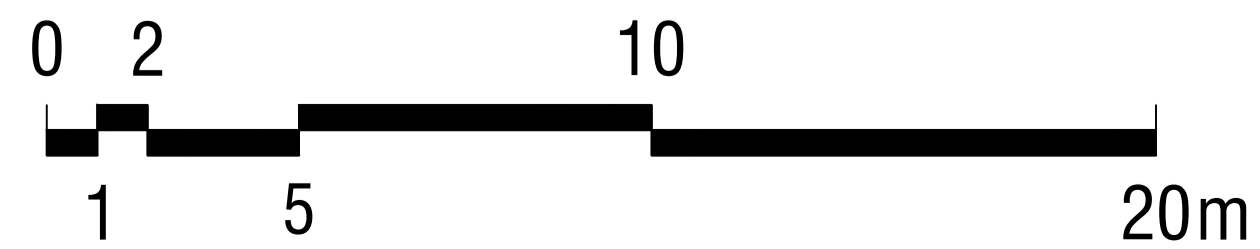
FERN MIX	QTY	SIZE	SPACING
Adiantum aethiopicum / Maidenhair Fern	165	0.45m	oc
Athyrium filix-femina / Common Lady Fern	93	0.6m	oc
Helleborus x hybridus 'Rome in Red' / Rome in Red Hellebore	134	0.5m	oc

PERENNIAL MIX	QTY	SIZE	SPACING
Achillea millefolium / Common Yarrow	217	0.5m	oc
Aster dumosus 'Wood's Light Blue' / Wood's Light Blue Aster	267	0.45m	oc
Echinacea purpurea / Coneflower	217	0.5m	oc
Rudbeckia fulgida / Coneflower	217	0.5m	oc

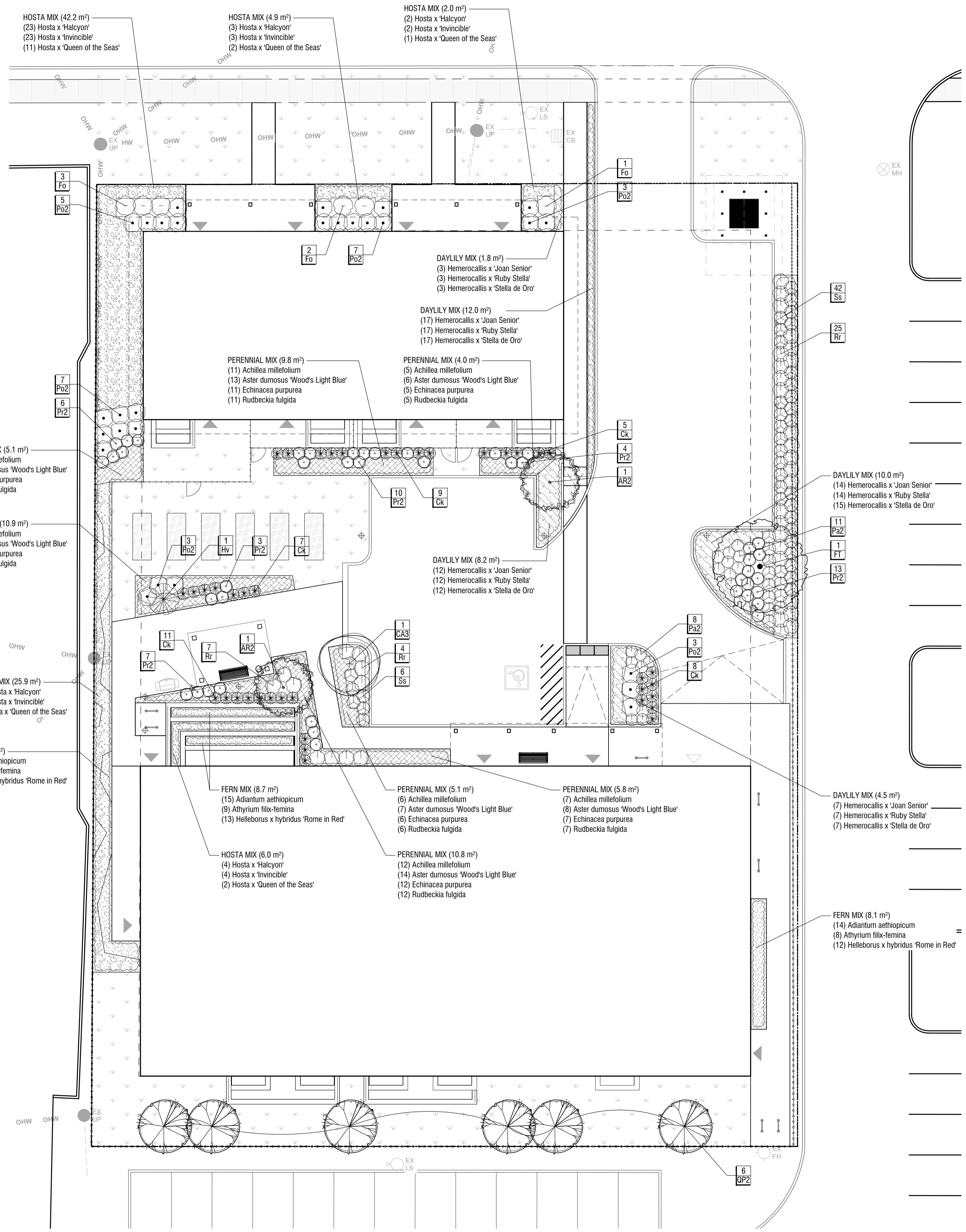
STANDARDS FOR TREE PLANTING:

- NO PLANTING ON CORNERS OR ANYWHERE WHERE IT WOULD CREATE A SIGHT LINE CONCERN;
- MAINTAIN A MINIMUM DISTANCE OF 7.5m FROM ALL BUILDINGS;
- MAINTAIN A MINIMUM DISTANCE OF 2.5m FROM THE CURB FOR DECIDUOUS TREES AND 4.5m FOR CONIFEROUS TREES;
- MAINTAIN A MINIMUM DISTANCE OF 1.5m FOR DECIDUOUS (4.5m FOR CONIFERS) FROM ANY SIDEWALK OR PRIVATE WALKWAY;
- MAINTAIN A MINIMUM DISTANCE OF 1.2m FROM ALL DRIVEWAYS;
- MAINTAIN A MINIMUM DISTANCE OF 2.5m FROM COMMUNITY MAILBOXES, LIGHT STANDARDS, FIRE HYDRANTS AND NO PLANTING IN FRONT OF HYDRANTS;
- MAINTAIN A MINIMUM DISTANCE OF 3.0m FROM ALL HYDRO TRANSFORMERS;
- MAINTAIN A MINIMUM DISTANCE OF 1.0m FROM ALL UNDERGROUND SERVICES;
- MAINTAIN A MINIMUM DISTANCE OF 1.0m FROM ALL BELL AND CABLE BOXES;
- MAINTAIN A MINIMUM DISTANCE OF 10.0 FROM BUS SHELTERS

PRELIMINARY
NOT FOR CONSTRUCTION



1 PLANTING PLAN
L2 1:150



Copyright Reserved
The Copyrights to all designs and drawings are the property of Fotenn Consultants Inc. Unauthorized reproduction or use is forbidden. DO NOT SCALE DRAWING
Copyright réservés
Les droits d'auteur à tous les modèles et dessins sont la propriété de Fotenn Consultants Inc. Reproduction ou utilisation non autorisée est interdite. NE PAS L'ÉCHELLE DE DESSIN

OTTAWA SALUS CORPORATION

key plan / plan repère

legend / légende

	LAWN
--	------

rev'n	description / la description	yyyy/mm/dd
01	issue for Site Plan Application	2023/03/03
00	issue for Client review	2023/02/01

FOTENN Planning + Design
396 Cooper Street, Suite 300
Ottawa, ON, CANADA K2P 2H7
613.730.5709
fotenn.com

north / le nord

stamp / le cachet

project / projet

56 CAPILANO

drawing / dessin

LANDSCAPE PLAN

designed / conçu	drawn / dessiné	reviewed / examiné
BM	BM/MB	DF
date	project number / No. du projet	
2023/01/26		

drawing number / No. du dessin

L2 of 4

PLOT INFORMATION: DWG NAME: P:\PROJECTS\253\Architectural\56 Capilano\56 Capilano_Landscape\56 Capilano_Landscape.dwg PLOT DATE: 2023-01-24 11:38:27 AM SHEET SIZE: 300x420mm A1 (594.0x441.0) MM PLOTTED BY: Brennan Mitchell LAST SAVED BY: amitchell

OTTAWA SALUS CORPORATION

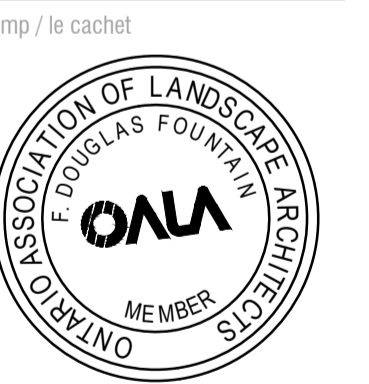
key plan / plan repère

legend / légende

rev'n	description / la description	yyyy/mm/dd
01	issue for Site Plan Application	2023/03/03
00	issue for Client review	2023/02/01

FOTENN Planning + Design
 396 Cooper Street, Suite 300
 Ottawa, ON, CANADA K2P 2H7
 613.730.5709
 fotenn.com

north / le nord



project / projet

56 CAPILANO

drawing / dessin

LANDSCAPE DETAILS

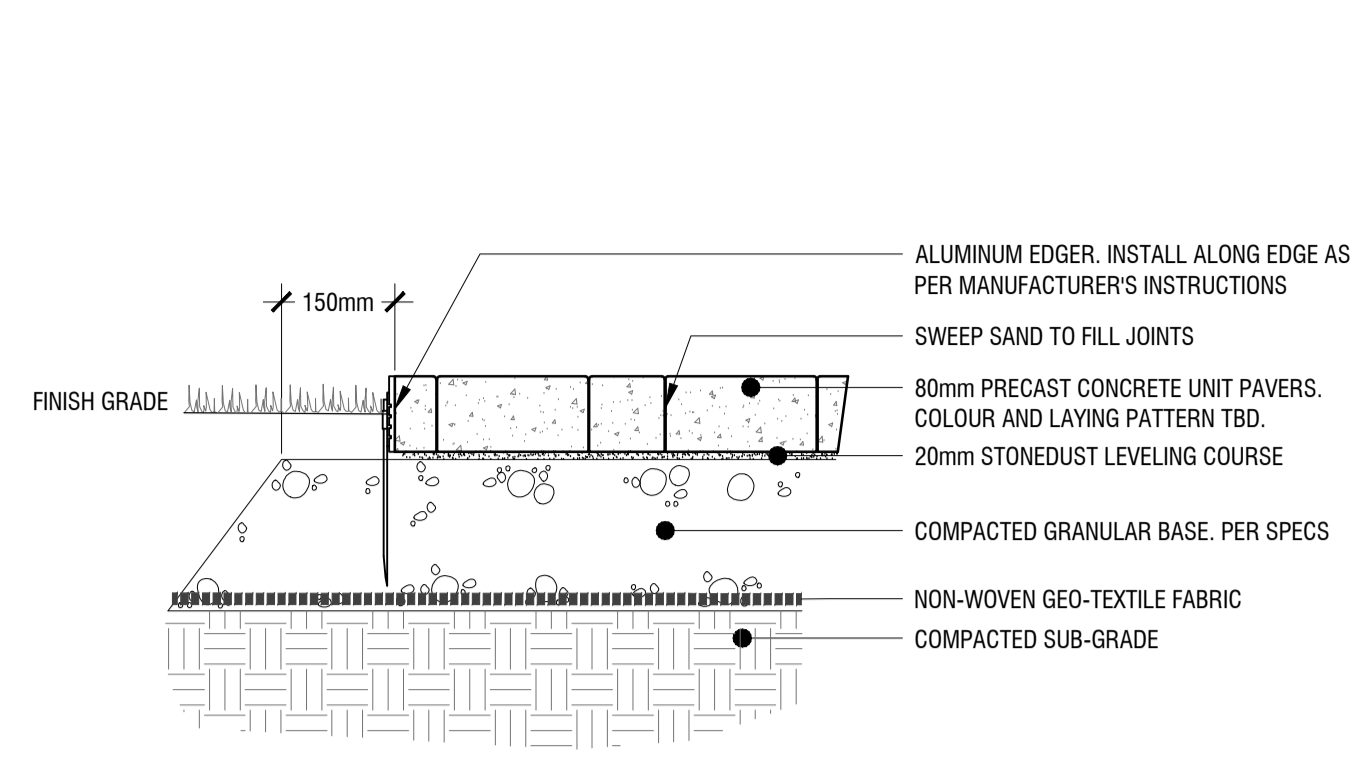
designed / conçu BM	drawn / dessiné BM/MB	reviewed / examiné DF
-------------------------------	---------------------------------	---------------------------------

date
2023/01/26

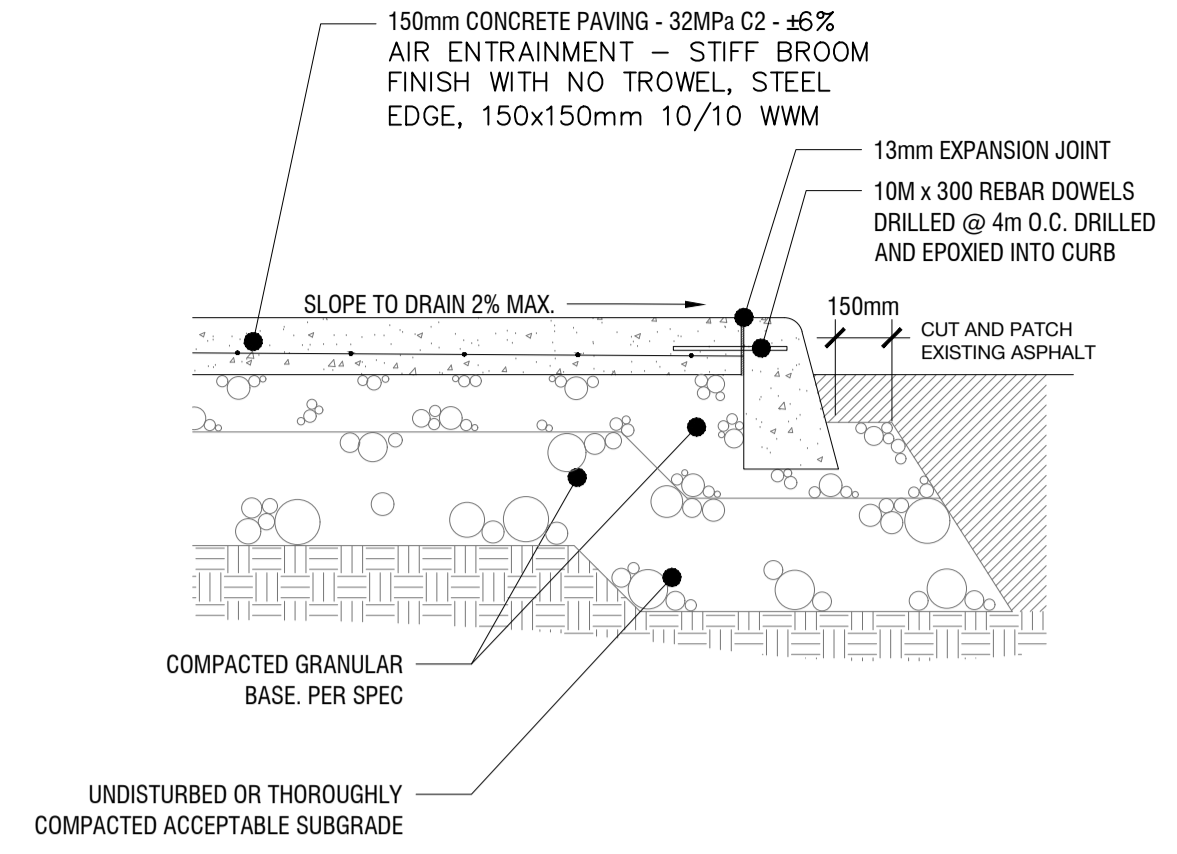
drawing number / No. du dessin

L3 of 4

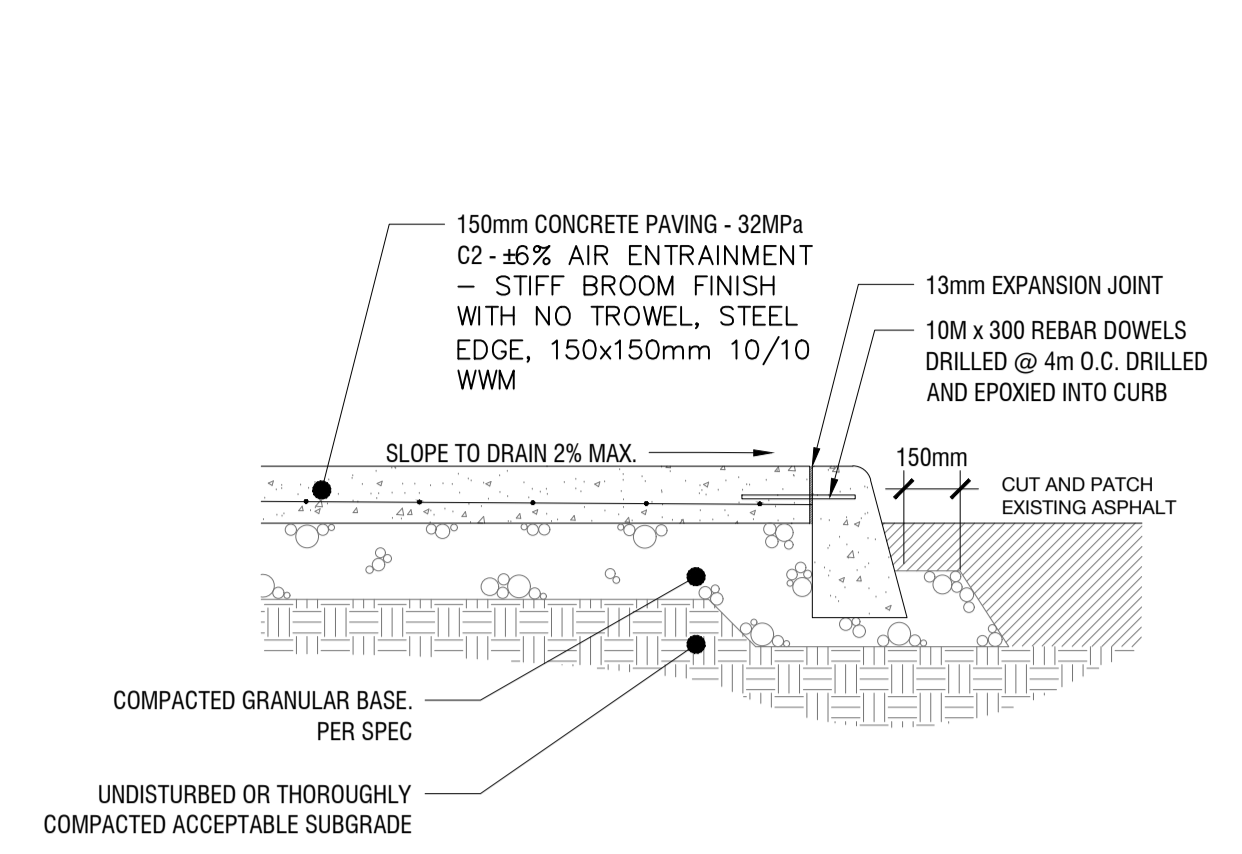
PRELIMINARY
NOT FOR CONSTRUCTION



3 PRECAST PAVERS WITH ALUMINUM EDGE
L3 NTS



2 CIP HEAVY DUTY CONCRETE PAVING DETAIL
L3 NTS



1 CIP LIGHT DUTY CONCRETE PAVING DETAIL
L3 NTS



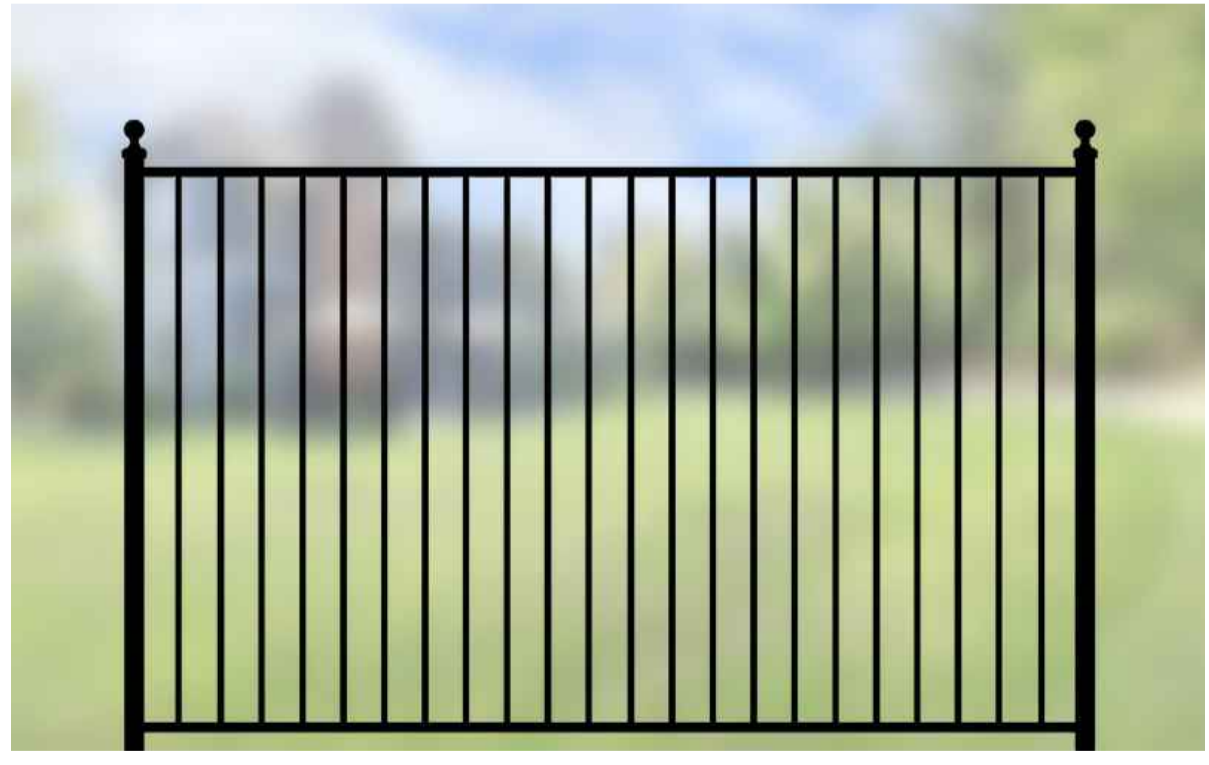
- NOTES:**
1. INSTALL PER MANUFACTURER'S INSTRUCTIONS;
 2. PRODUCT TO BE 'GABLE ROOF RECTANGLE' BY POLIGON OR APPROVED EQUAL.

4 SHADE STRUCTURE
L3 NTS



- NOTES:**
1. INSTALL 1.8m HEIGHT PRIVACY FENCE 150mm INSIDE PROPERTY LINE;
 2. INSTALL PER MANUFACTURER'S INSTRUCTIONS;
 3. PRODUCT TO BE 'ALCUF DP1 PRIVACY' BY ALCUF INTERNATIONAL INC. OR APPROVED EQUAL.

5 WOOD FENCE DETAIL
L3 NTS



- NOTES:**
1. INSTALL 1.2m POWDERCOATED ALUMINUM FENCE AND GATES, REFER TO LANDSCAPE PLANS FOR LOCATIONS;
 2. INSTALL PER MANUFACTURER'S INSTRUCTIONS;
 3. PRODUCT TO BE 'ELEGANT TRADITIONAL' WITH PYRAMID POST CAPS BY IRON EAGLE INDUSTRIES OR APPROVED EQUAL.

6 ORNAMENTAL METAL FENCE AT UNIT PATIOS
L3 NTS



- NOTES:**
1. INSTALL PER MANUFACTURER'S INSTRUCTIONS;
 2. PRODUCT TO BE 'ARCHITECTURAL COLOUR COATED CHAIN LINK FENCE' BY MERCHANTS METALS OR APPROVED EQUAL.

7 CHAINLINK FENCE
L3 NTS

OTTAWA SALUS CORPORATION

key plan / plan repère

legend / légende

01	issue for Site Plan Application	2023/03/03
00	issue for Client review	2023/02/01
rev'n	description / la description	yyyy/mm/dd

FOTENN Planning + Design
396 Cooper Street, Suite 300
Ottawa, ON, CANADA K2P 2H7
613.730.5709
fotenn.com

north / le nord stamp / le cachet

project / projet
56 CAPILANO
drawing / dessin

LANDSCAPE DETAILS

designed / conçu BM	drawn / dessiné BM/MB	reviewed / examiné DF
date 2023/01/26		project number / No. du projet

drawing number / No. du dessin
L4 of 4

**PRELIMINARY
NOT FOR CONSTRUCTION**

500 SERIES
MBR-0500-00003
Legacy #MBR500-S

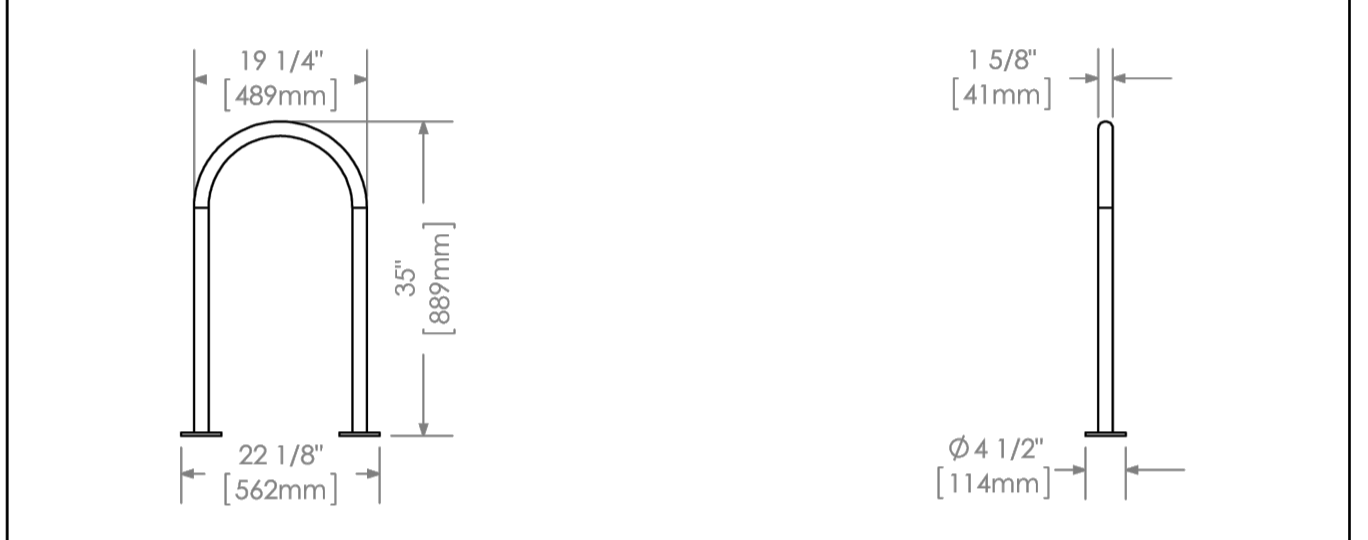
Sustainability Facts

Unit Size	One (1) MBR-0500-00001 Bike Rack
Carbon footprint (GWP)	103 kg CO ₂ -Eq <i>Measured in kilograms of carbon dioxide equivalent</i>
Total energy use (TPE)	1770 MJ-Eq <i>Measured in megajoules of energy equivalent</i>
Water use (WUP)	0.643 m ³ water <i>Measured in cubic metres of water</i>
Material recyclability	100%
LEED v4.1 Credits	
Type III Environmental Product Declaration	<input checked="" type="checkbox"/>
Material Inventory	<input checked="" type="checkbox"/>
Low VOC finishes	<input checked="" type="checkbox"/>
Free of Red List substances	<input checked="" type="checkbox"/>

*Full EPD can be referenced for more information: <https://www.epdinformation.com/maglin/>

DESCRIPTION: 500 Series - 500 Bike Rack: H.S. Steel Tube, Surface Mount, 2 Bike Configuration
FINISH: All steel components are protected with E-Coat rust proofing. The Maglin Powdercoat System provides a durable finish on all metal surfaces.
INSTALLATION: The bike rack is delivered pre-assembled. It is available with either a surface mount or direct burial installation option.
TO SPECIFY: Select MBR-0500-00003
 Choose:
 - Powdercoat Color

HEIGHT: 35" (88.9cm) LENGTH: 19.25" (48.9cm) WEIGHT: 13.27 lbs (6.0kg)

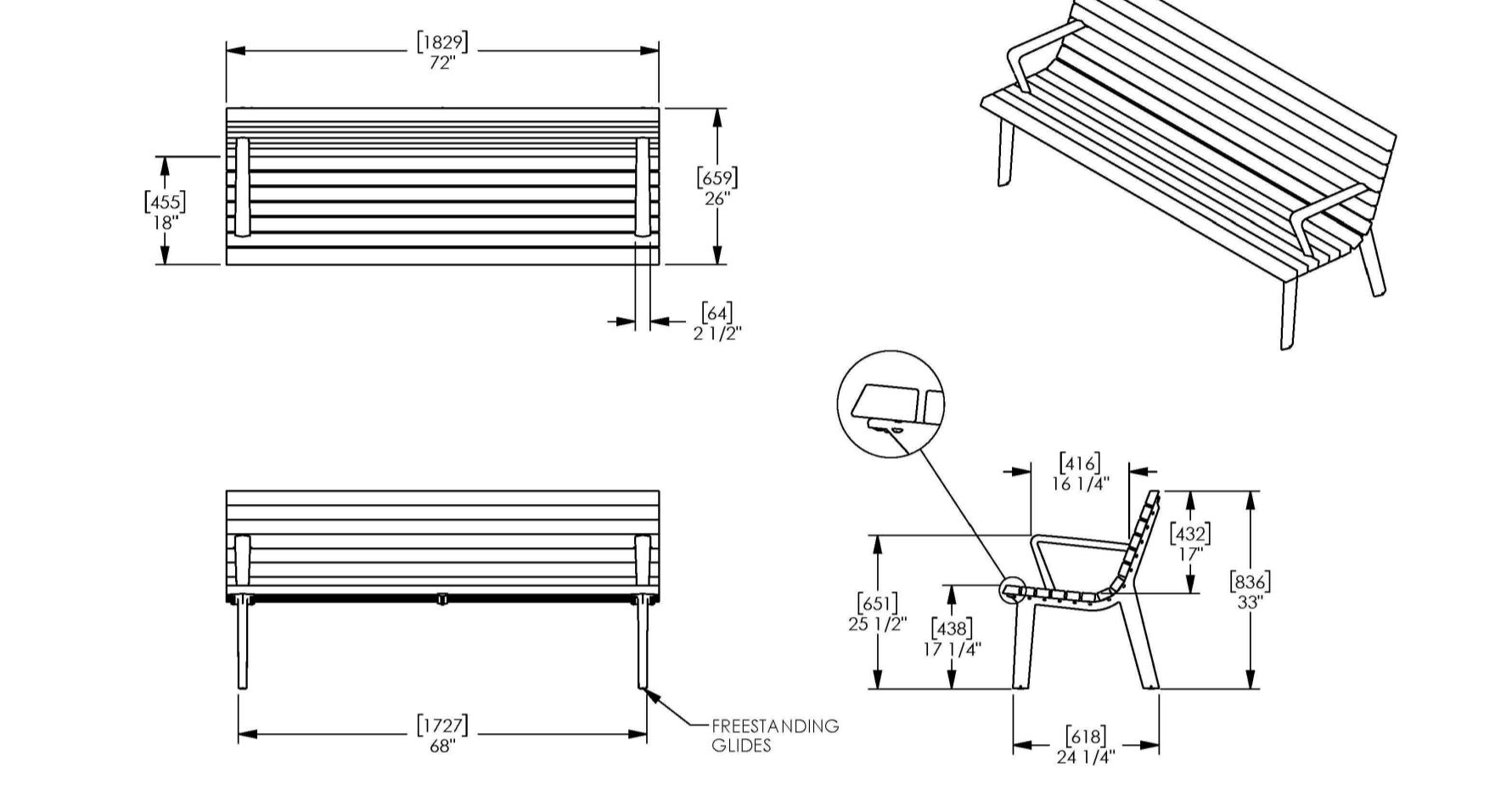


MAGLIN Site Furniture
 T 800 718 5558
 F 877 260 9393
 www.maglin.com
 sales@maglin.com

All drawings, specifications, design and details on this page remain the property of Maglin Site Furniture Inc. and may not be used without Maglin authorization. Details and specifications may vary due to continuing improvements of our products.

Generation 50 bench, backrest, 72in length, straight cut face board, traditional support, angled end arms
 Product Drawing Date: 3/9/2019 Ph: 800.521.2546

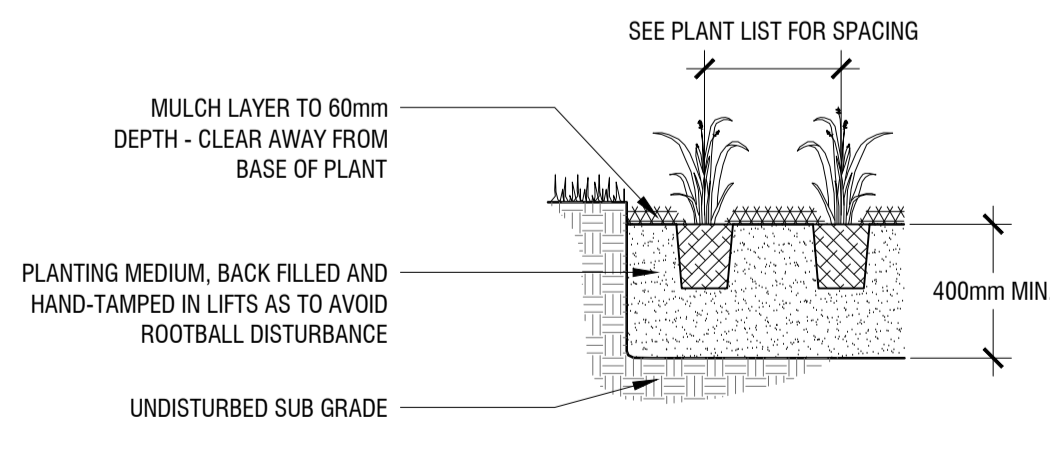
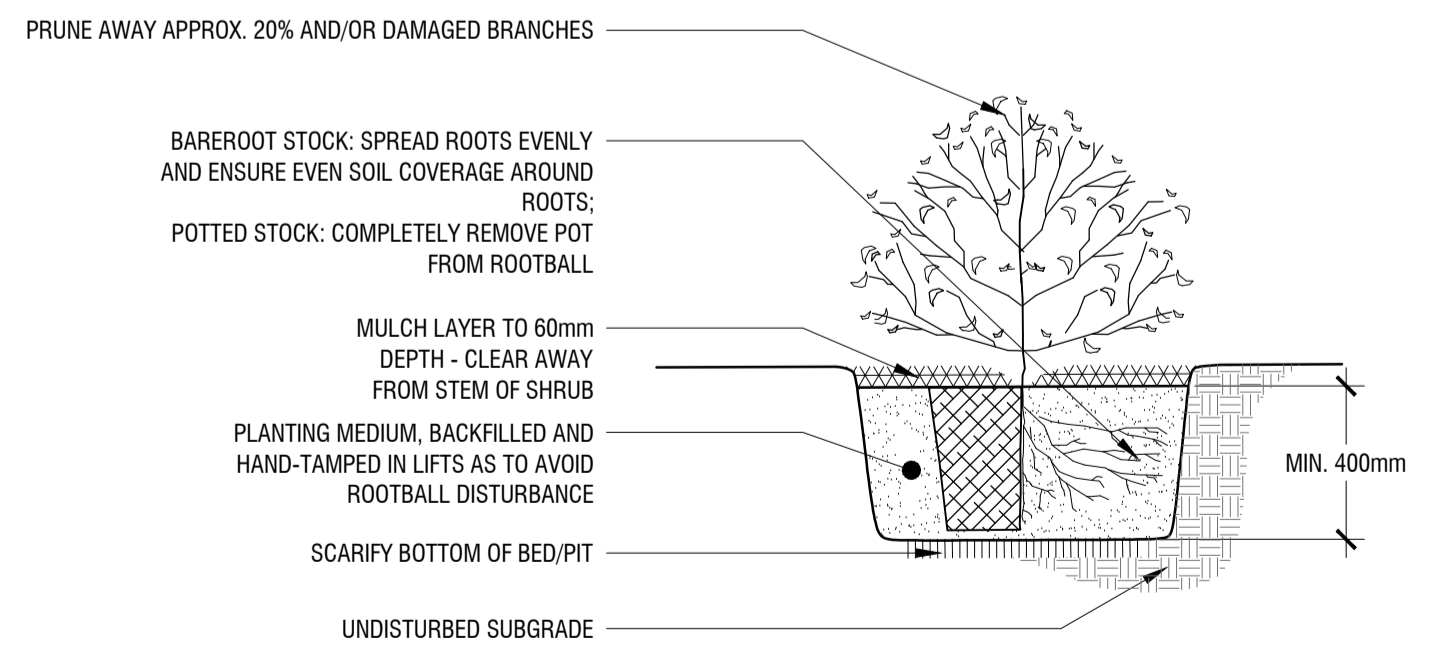
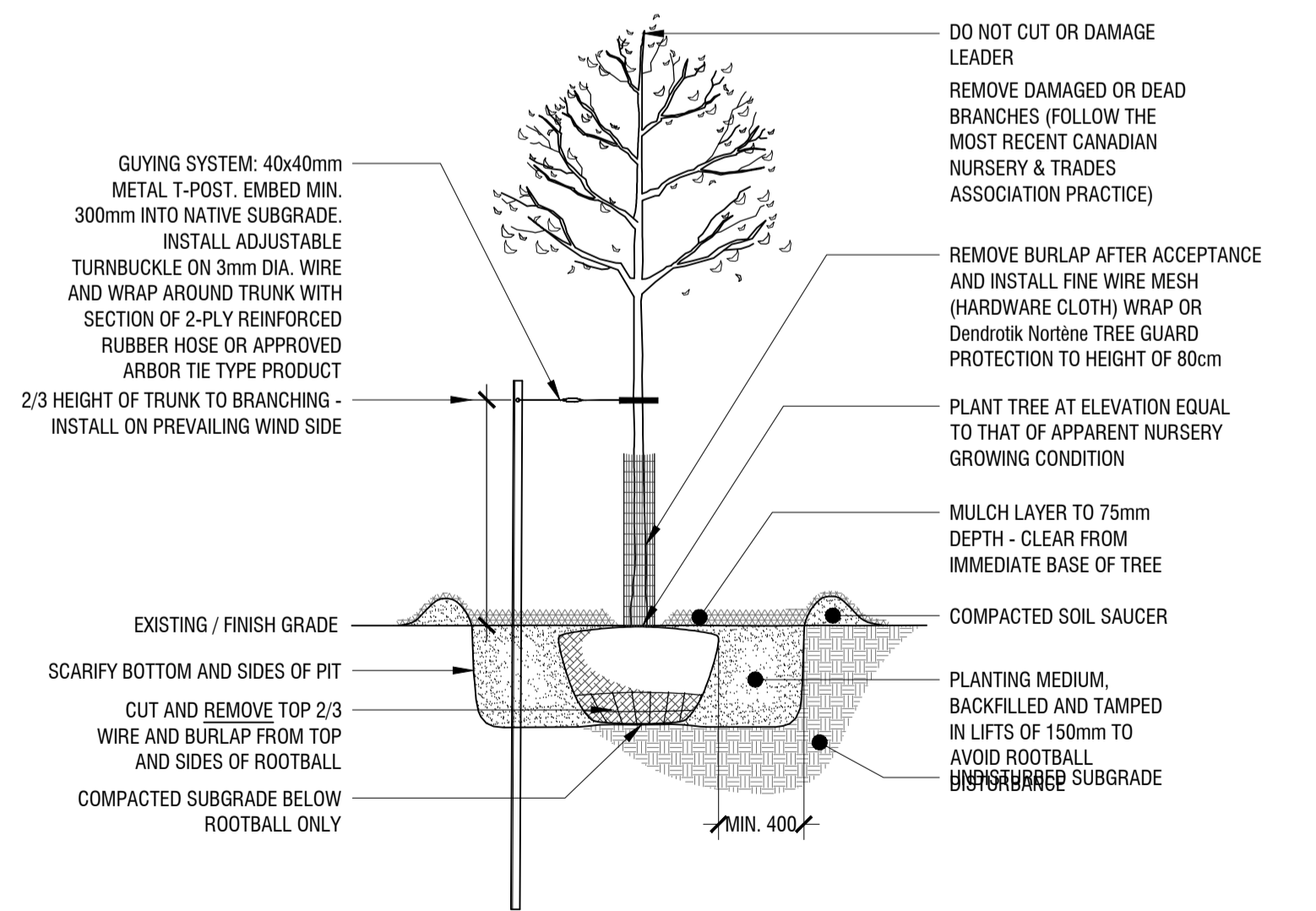
AVAILABLE WITH:
 -FREESTANDING GLIDES
 -SURFACE MOUNT, INCLUDES 1/2-13 THREADED CUSTOM BOLTS AND DROP-IN ANCHORS
 -EMBEDDED, INCLUDES 1/2-13 x 5" THREADED RODS



landscapeforms Drawing: EV201-04 Dimensions are in inches (mm) Patent Pending
 CONFIDENTIAL DRAWING INFORMATION CONTAINED HEREIN IS THE PROPERTY OF LANDSCAPE FORMS. INTENDED USE IS LIMITED TO DESIGN PROFESSIONALS SPECIFYING LANDSCAPE FORMS PRODUCTS AND THEIR LORGE CLIENTS. DRAWINGS IS NOT TO BE COPIED OR DISCLOSED TO OTHERS WITHOUT THE CONSENT OF LANDSCAPE FORMS. © 2018 LANDSCAPE FORMS ALL RIGHTS RESERVED.

1 BIKE RACK
L4 NTS

2 BENCH
L4 NTS



3 DECIDUOUS TREE PLANTING DETAIL
L4 1:30

4 SHRUB PLANTING DETAIL
L4 1:20

5 PERENNIAL PLANTING DETAIL
L4 1:20