



1 ELEVATION - NORTH
A301 1:100



3 ELEVATION - EAST
A301 1:100



2 NORTH/EAST PERSPECTIVE VIEW
A301

ELEVATION NOTES:

CONTRACTOR TO COORDINATE WITH MANUFACTURER'S SPECIFICATIONS AND INSTALLATIONS GUIDELINES FOR ALL MATERIAL SEALING, TRANSITIONS, SEPARATIONS, FLASHING DETAILS, CONNECTIONS, ANCHORAGES, ETC. CONTRACTOR TO PROVIDE DETAIL DRAWINGS OR MOCK-UP FOR ARCHITECT'S REVIEW AND APPROVAL FOR ALL SPECIAL CONDITIONS NOT SHOWN IN THE CONTRACT DOCUMENTS.

ELEVATION KEYNOTES:

- 1 OVERFLOW SCUPPER FLASHING COLOUR TO MATCH PARAPET CAP FLASHING
- 2 FUTURE PHOTOVOLTAIC ARRAY
- 3 ROOF ACCESS HATCH
- 4 PRE FINISHED METAL PARAPET CAP FLASHING
- 5 CANOPY STRUCTURE
- 6 MECHANICAL VENTILATION WELL
- 7 BICYCLE PARKING RACK/RING
- 8 BUILDING SIGNAGE
- 9 WALL MOUNTED EXTERIOR LIGHT
- 10 1070mm HIGH STAINLESS STEEL GUARD ANCHORED TO CONCRETE BLOCK RETAINING WALL
- 11 CONCRETE FACED INSULATION PANEL
- 12 STANDING SEAM METAL ROOF

ELEVATION LEGEND:

HATCH PATTERNS SHOWN ARE FOR GRAPHIC PURPOSES ONLY AND SHOULD BE COORDINATED WITH ACTUAL SPECIFIED MATERIALS.

HATCH	SYMBOL	DESCRIPTION
	A	SIMULATED WOOD PLANK ALUMINIUM SIDING MANUFACTURER: TBD COLOUR: TBD
	B	METAL CASSETTE PANEL CLADDING MANUFACTURER: TBD COLOUR: TBD
	C	CONCRETE REINFORCED PANEL CLADDING MANUFACTURER: TBD COLOUR: TBD



APPROVED
By Allison Hamlin at 4:16 pm, Nov 01, 2023



STRUCTURAL ENGINEER
Cleland Jardine Engineering Ltd
580 Terry Fox Drive, Suite 200
Ottawa, ON
613-591-1533
mail@clelandjardine.com



MECHANICAL & ELECTRICAL ENGINEER
Chorley + Bisset Consulting Engineers
250 City Centre Ave.,
Ottawa, ON
613-241-0030
email@chorley.com



CIVIL ENGINEER
McIntosh Perry
115 Walgreen Road
RR3 Carp, ON
613-836-2184
info@mcintoshperry.com



LANDSCAPE ARCHITECT
Fotenn
396 Cooper St, Suite 300
Ottawa, ON
613-730-5709
info@fotenn.com



STAMP

2 2023.03.08 ISSUED FOR SITE PLAN CONTROL
1 2023.02.03 ISSUED FOR RHU 3 APPLICATION
REV DATE ISSUE

NOTES

- 1. OWNERSHIP OF THE COPYRIGHT OF THE DESIGN AND THE WORKS EXECUTED FROM THE DESIGN REMAINS WITH CSV ARCHITECTS, AND MAY NOT BE REPRODUCED IN ANY FORM WITHOUT THE WRITTEN CONSENT OF CSV ARCHITECTS.
- 2. THE DRAWINGS, PRESENTATIONS AND SERVICE SPECIFICATIONS AS INSTRUMENTS OF SERVICE ARE AND SHALL REMAIN THE PROPERTY OF CSV ARCHITECTS. THEY ARE NOT TO BE USED BY THE CLIENT ON OTHER PROJECTS OR ON EXTENSIONS TO THIS PROJECT WITHOUT THE WRITTEN CONSENT OF CSV ARCHITECTS.
- 3. THIS DRAWING IS TO BE READ IN CONJUNCTION WITH ALL OTHER PROJECT DRAWINGS AND SPECIFICATIONS.
- 4. DO NOT SCALE DRAWINGS. CONTRACTOR SHALL BE RESPONSIBLE TO VERIFY DIMENSIONS ON SITE.
- 5. ALL WORK SHALL BE IN ACCORDANCE WITH THE ONTARIO BUILDING CODE AND ALL SUPPLEMENTS AND APPLICABLE MUNICIPAL REGULATIONS.

CLIENT

OTTAWA SALUS

200 Scott Street
Ottawa Ontario
K1Z 6T2
Salusottawa.org

PROJECT

SALUS 56 CAPILANO

56 Capilano Drive, Ottawa, ON

TITLE

APARTMENT ELEVATIONS

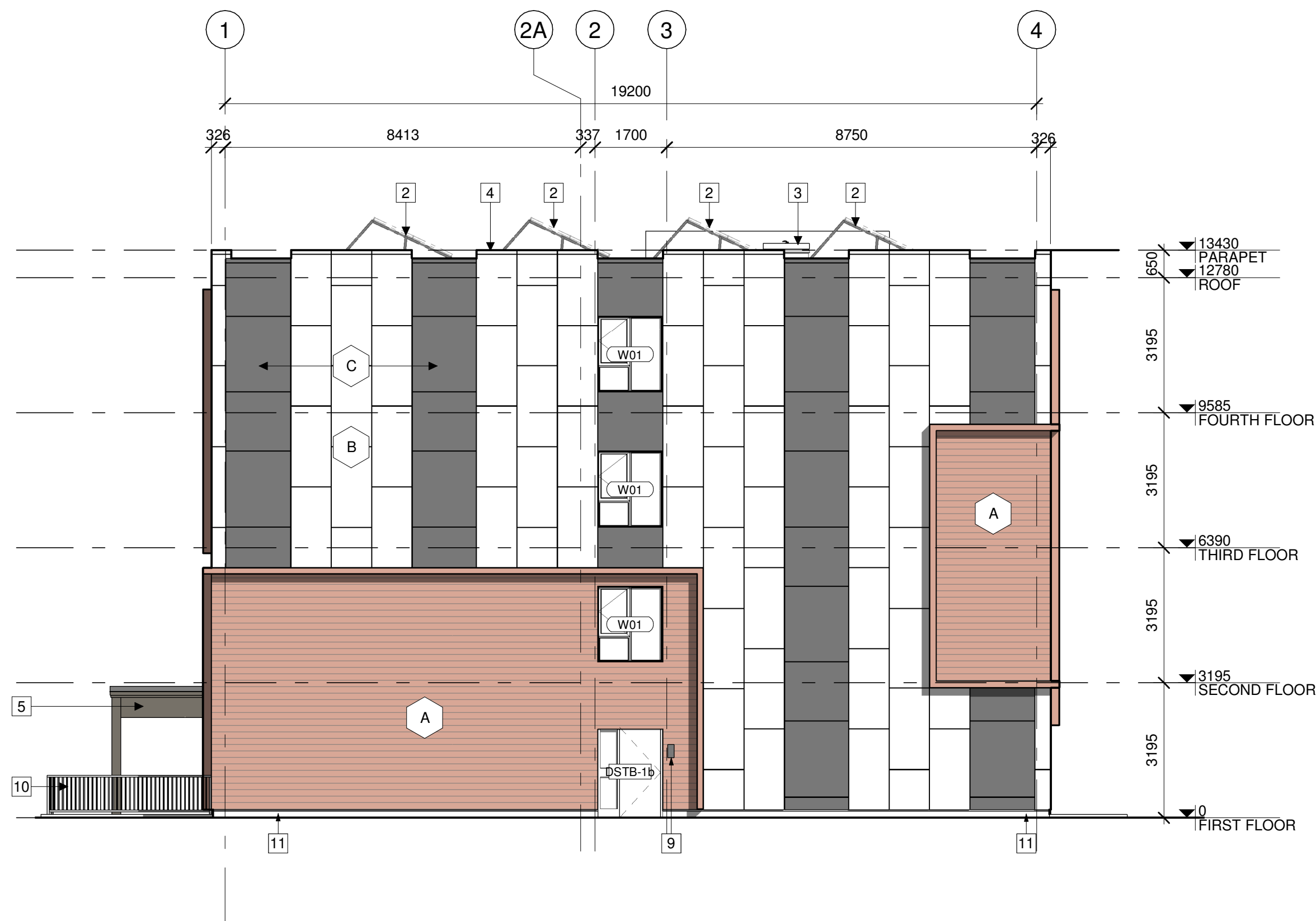
PROJECT NO: 2019-0291
DRAWN: AS, KV
APPROVED: DH
SCALE: 1:100

REV DRAWING NO.

2 A301



1 ELEVATION - SOUTH
A302 1:100



2 ELEVATION - WEST
A302 1:100



3 SOUTH/WEST PERSPECTIVE VIEW
A302

ELEVATION NOTES:

CONTRACTOR TO COORDINATE WITH MANUFACTURER'S SPECIFICATIONS AND INSTALLATIONS GUIDELINES FOR ALL MATERIAL SEALING, TRANSITIONS, SEPARATIONS, FLASHING DETAILS, CONNECTIONS, ANCHORAGES, ETC. CONTRACTOR TO PROVIDE DETAIL DRAWINGS OR MOCK-UP FOR ARCHITECT'S REVIEW AND APPROVAL FOR ALL SPECIAL CONDITIONS NOT SHOWN IN THE CONTRACT DOCUMENTS.

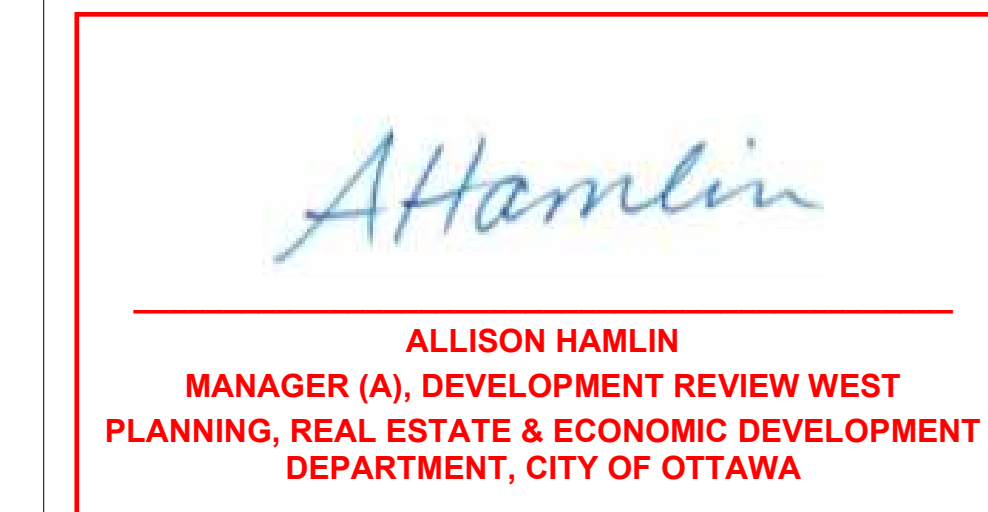
ELEVATION KEYNOTES:

- 1 OVERFLOW SCUPPER FLASHING COLOUR TO MATCH PARAPET CAP FLASHING
- 2 FUTURE PHOTOVOLTAIC ARRAY
- 3 ROOF ACCESS HATCH
- 4 PRE FINISHED METAL PARAPET CAP FLASHING
- 5 CANOPY STRUCTURE
- 6 MECHANICAL VENTILATION WELL
- 7 BICYCLE PARKING RACK/RING
- 8 BUILDING SIGNAGE
- 9 WALL MOUNTED EXTERIOR LIGHT
- 10 1070mm HIGH STAINLESS STEEL GUARD ANCHORED TO CONCRETE BLOCK RETAINING WALL
- 11 CONCRETE FACED INSULATION PANEL
- 12 STANDING SEAM METAL ROOF

ELEVATION LEGEND:

HATCH PATTERNS SHOWN ARE FOR GRAPHIC PURPOSES ONLY AND SHOULD BE COORDINATED WITH ACTUAL SPECIFIED MATERIALS.

HATCH	SYMBOL	DESCRIPTION
[Wood Plank Pattern]	A	SIMULATED WOOD PLANK ALUMINIUM SIDING MANUFACTURER: TBD COLOUR: TBD
[Cassette Panel Pattern]	B	METAL CASSETTE PANEL CLADDING MANUFACTURER: TBD COLOUR: TBD
[Concrete Panel Pattern]	C	CONCRETE REINFORCED PANEL CLADDING MANUFACTURER: TBD COLOUR: TBD



APPROVED
By Allison Hamlin at 4:16 pm, Nov 01, 2023



STRUCTURAL ENGINEER
Cleland Jardine Engineering Ltd
580 Terry Fox Drive, Suite 200
Ottawa, ON
613-591-1533
mail@clelandjardine.com



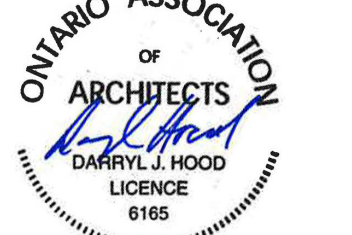
MECHANICAL & ELECTRICAL ENGINEER
Chorley + Bisset Consulting Engineers
250 City Centre Ave.,
Ottawa, ON
613-241-0030
email@chorley.com



CIVIL ENGINEER
McIntosh Perry
115 Walgreen Road
RR3 Carp, ON
613-836-2184
info@mcintoshperry.com



LANDSCAPE ARCHITECT
Fotenn
396 Cooper St, Suite 300
Ottawa, ON
613-730-5709
info@fotenn.com



STAMP

REV	DATE	ISSUE
2	2023.03.08	ISSUED FOR SITE PLAN CONTROL
1	2023.02.03	ISSUED FOR RHI 3 APPLICATION

NOTES

1. OWNERSHIP OF THE COPYRIGHT OF THE DESIGN AND THE WORKS EXECUTED FROM THE DESIGN REMAINS WITH CSV ARCHITECTS, AND MAY NOT BE REPRODUCED IN ANY FORM WITHOUT THE WRITTEN CONSENT OF CSV ARCHITECTS.
2. THE DRAWINGS, PRESENTATIONS AND SERVICE SPECIFICATIONS AS INSTRUMENTS OF SERVICE ARE AND SHALL REMAIN THE PROPERTY OF CSV ARCHITECTS. THEY ARE NOT TO BE USED BY THE CLIENT ON OTHER PROJECTS OR ON EXTENSIONS TO THIS PROJECT WITHOUT THE WRITTEN CONSENT OF CSV ARCHITECTS.
3. THIS DRAWING IS TO BE READ IN CONJUNCTION WITH ALL OTHER PROJECT DRAWINGS AND SPECIFICATIONS.
4. DO NOT SCALE DRAWINGS. CONTRACTOR SHALL BE RESPONSIBLE TO VERIFY DIMENSIONS ON SITE.
5. ALL WORK SHALL BE IN ACCORDANCE WITH THE ONTARIO BUILDING CODE AND ALL SUPPLEMENTS AND APPLICABLE MUNICIPAL REGULATIONS.

CLIENT

OTTAWA SALUS

200 Scott Street
Ottawa Ontario
K1Z 6T2
Salusottawa.org

PROJECT

SALUS 56 CAPILANO

56 Capilano Drive, Ottawa, ON

TITLE

APARTMENT ELEVATIONS

PROJECT NO: 2019-0291
DRAWN: AS, KV
APPROVED: DH
SCALE: 1:100

REV DRAWING NO.

2 A302



STRUCTURAL ENGINEER
 Cleland Jardine Engineering Ltd
 580 Terry Fox Drive, Suite 200
 Ottawa, ON K1M 1S3
 613-591-1533
 mail@clelandjardine.com



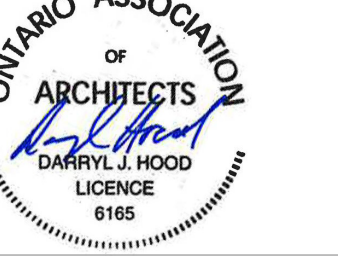
MECHANICAL & ELECTRICAL ENGINEER
 Chorley + Bisset Consulting Engineers
 250 City Centre Ave.,
 Ottawa, ON K1P 1H1
 613-241-0030
 email@chorley.com



CIVIL ENGINEER
 McIntosh Perry
 115 Walgreen Road
 RR3 Carp, ON K0S 1L0
 613-836-2184
 info@mcintoshperry.com



LANDSCAPE ARCHITECT
 Fotenn
 396 Cooper St, Suite 300
 Ottawa, ON K1P 1H1
 613-730-5709
 info@fotenn.com



STAMP

ELEVATION NOTES:

CONTRACTOR TO COORDINATE WITH MANUFACTURER'S SPECIFICATIONS AND INSTALLATIONS GUIDELINES FOR ALL MATERIAL SEALING, TRANSITIONS, SEPARATIONS, FLASHING DETAILS, CONNECTIONS, ANCHORAGES, ETC. CONTRACTOR TO PROVIDE DETAIL DRAWINGS OR MOCK-UP FOR ARCHITECT'S REVIEW AND APPROVAL FOR ALL SPECIAL CONDITIONS NOT SHOWN IN THE CONTRACT DOCUMENTS.

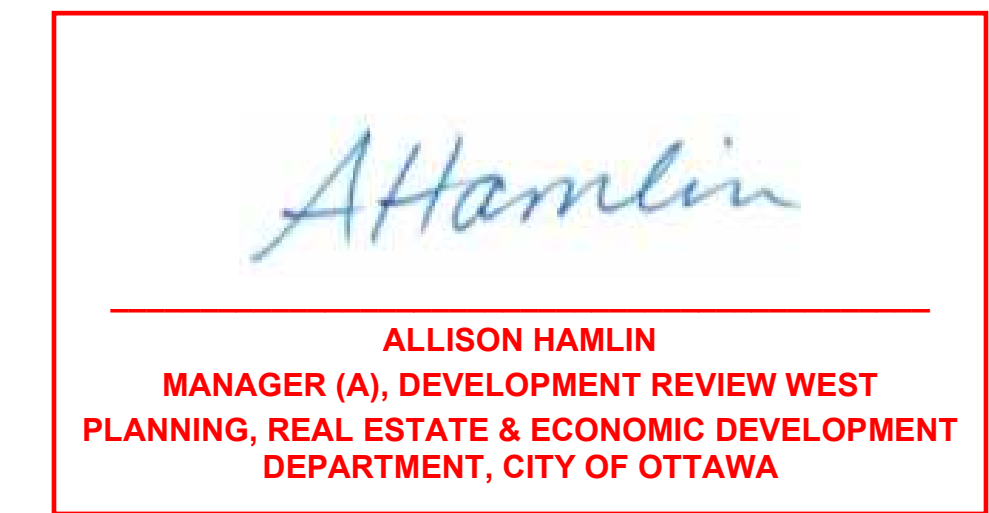
ELEVATION KEYNOTES:

- 1 OVERFLOW SCUPPER
- 2 FLASHING COLOUR TO MATCH PARAPET CAP FLASHING
- 3 FUTURE PHOTOVOLTAIC ARRAY
- 4 ROOF ACCESS HATCH
- 5 PRE FINISHED METAL PARAPET CAP FLASHING
- 6 CANOPY STRUCTURE
- 7 MECHANICAL VENTILATION WELL
- 8 BICYCLE PARKING RACK/RING
- 9 BUILDING SIGNAGE
- 10 WALL MOUNTED EXTERIOR LIGHT
- 11 1070mm HIGH STAINLESS STEEL GUARD ANCHORED TO CONCRETE BLOCK RETAINING WALL
- 12 CONCRETE FACED INSULATION PANEL

ELEVATION LEGEND:

HATCH PATTERNS SHOWN ARE FOR GRAPHIC PURPOSES ONLY AND SHOULD BE COORDINATED WITH ACTUAL SPECIFIED MATERIALS.

HATCH	SYMBOL	DESCRIPTION
	A	SIMULATED WOOD PLANK ALUMINIUM SIDING MANUFACTURER: TBD COLOUR: TBD
	B	METAL CASSETTE PANEL CLADDING MANUFACTURER: TBD COLOUR: TBD
	C	CONCRETE REINFORCED PANEL CLADDING MANUFACTURER: TBD COLOUR: TBD



APPROVED
 By Allison Hamlin at 4:16 pm, Nov 01, 2023

REV	DATE	ISSUE
2	2023.03.08	ISSUED FOR SITE PLAN CONTROL
1	2023.02.03	ISSUED FOR RHI 3 APPLICATION

NOTES

1. OWNERSHIP OF THE COPYRIGHT OF THE DESIGN AND THE WORKS EXECUTED FROM THE DESIGN REMAINS WITH CSV ARCHITECTS, AND MAY NOT BE REPRODUCED IN ANY FORM WITHOUT THE WRITTEN CONSENT OF CSV ARCHITECTS.
2. THE DRAWINGS, PRESENTATIONS AND SPECIFICATIONS AS INSTRUMENTS OF SERVICE ARE AND SHALL REMAIN THE PROPERTY OF CSV ARCHITECTS. THEY ARE NOT TO BE USED BY THE CLIENT ON OTHER PROJECTS OR ON EXTENSIONS TO THIS PROJECT WITHOUT THE WRITTEN CONSENT OF CSV ARCHITECTS.
3. THIS DRAWING IS TO BE READ IN CONJUNCTION WITH ALL OTHER PROJECT DRAWINGS AND SPECIFICATIONS.
4. DO NOT SCALE DRAWINGS. CONTRACTOR SHALL BE RESPONSIBLE TO VERIFY DIMENSIONS ON SITE.
5. ALL WORK SHALL BE IN ACCORDANCE WITH THE ONTARIO BUILDING CODE AND ALL SUPPLEMENTS AND APPLICABLE MUNICIPAL REGULATIONS.

CLIENT

OTTAWA SALUS

200 Scott Street
 Ottawa Ontario
 K1Z 6T2
 Salusottawa.org

PROJECT

SALUS 56 CAPILANO

56 Capilano Drive, Ottawa, ON

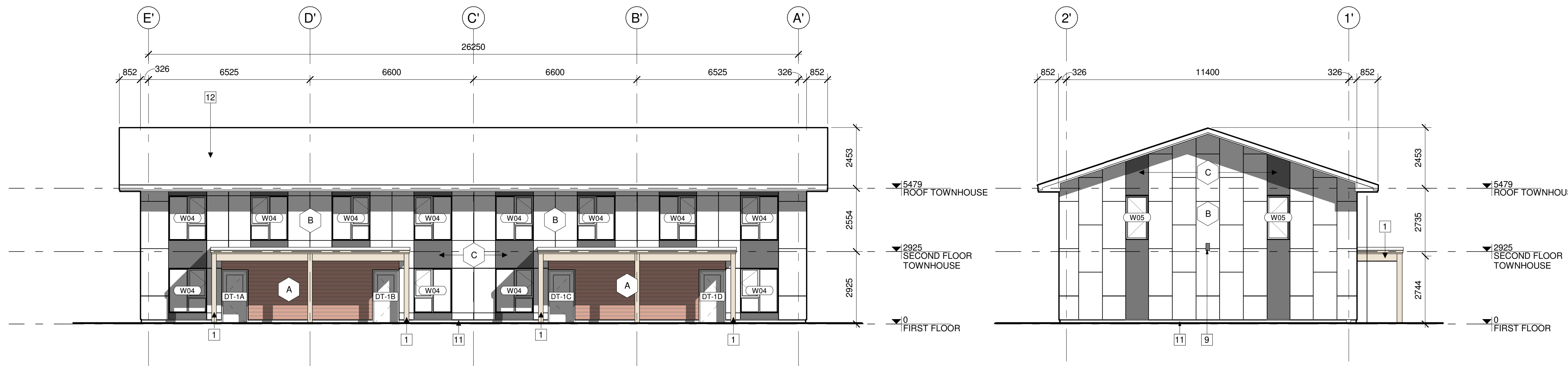
TITLE

TOWNHOUSE ELEVATIONS

PROJECT NO: 2019-0291
 DRAWN: AS, KV
 APPROVED: DH
 SCALE: 1 : 100

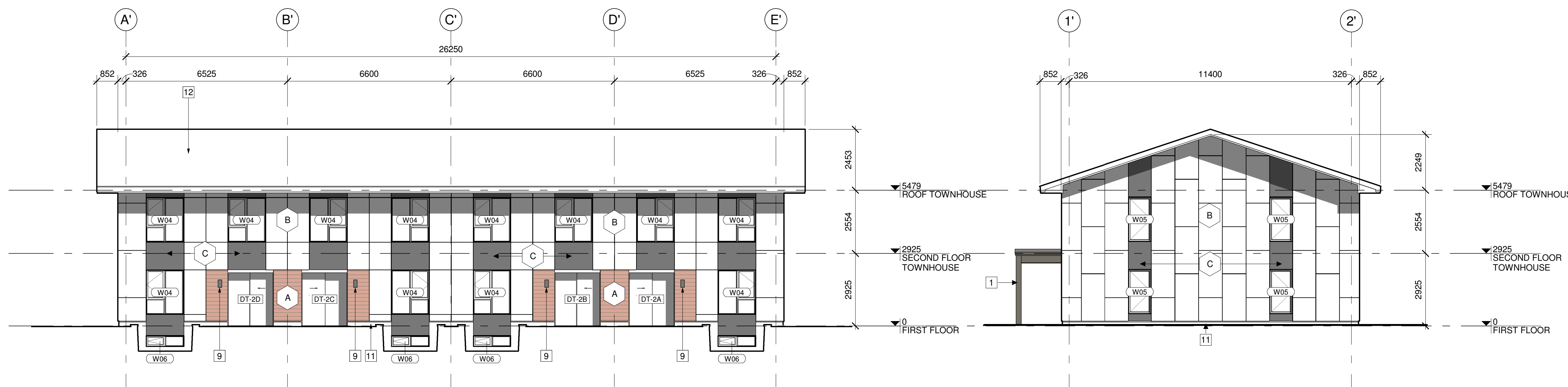
REV DRAWING NO.

2 A310



1 TOWNHOUSES NORTH ELEVATION
 A310 1:100

2 TOWNHOUSES EAST ELEVATION
 A310 1:100



3 TOWNHOUSES SOUTH ELEVATION
 A310 1:100

4 TOWNHOUSES WEST ELEVATION
 A310 1:100



5 TOWNHOUSE NORTH/EAST PERSPECTIVE VIEW
 A310



6 TOWNHOUSE SOUTH/WEST PERSPECTIVE VIEW
 A310