

Allan Hamlin

ALLISON HAMLIN
MANAGER (A), DEVELOPMENT REVIEW WEST
PLANNING, REAL ESTATE & ECONOMIC DEVELOPMENT
DEPARTMENT, CITY OF OTTAWA

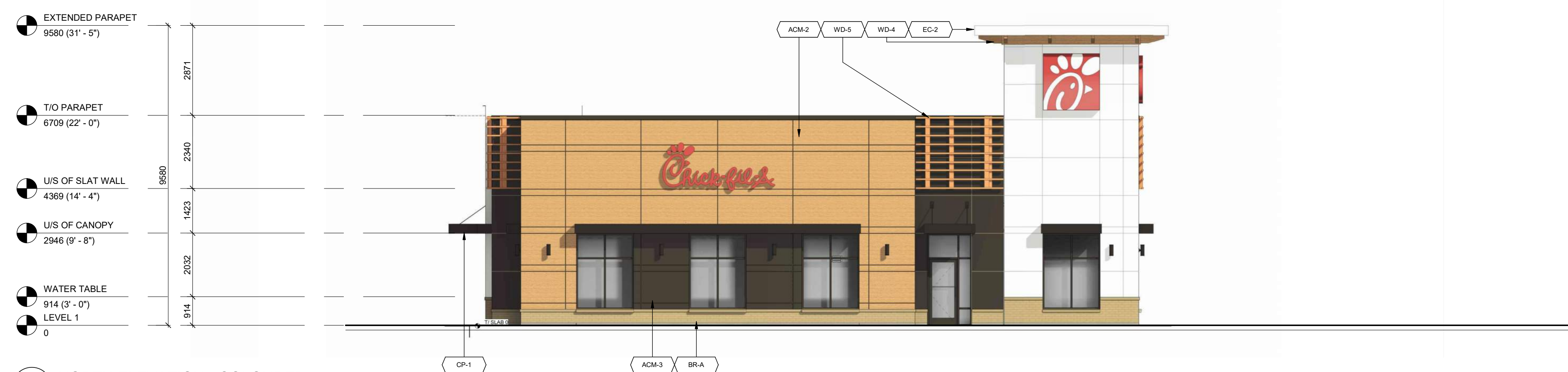
APPROVED
By Allison Hamlin at 1:55 pm, Sep 19, 2023



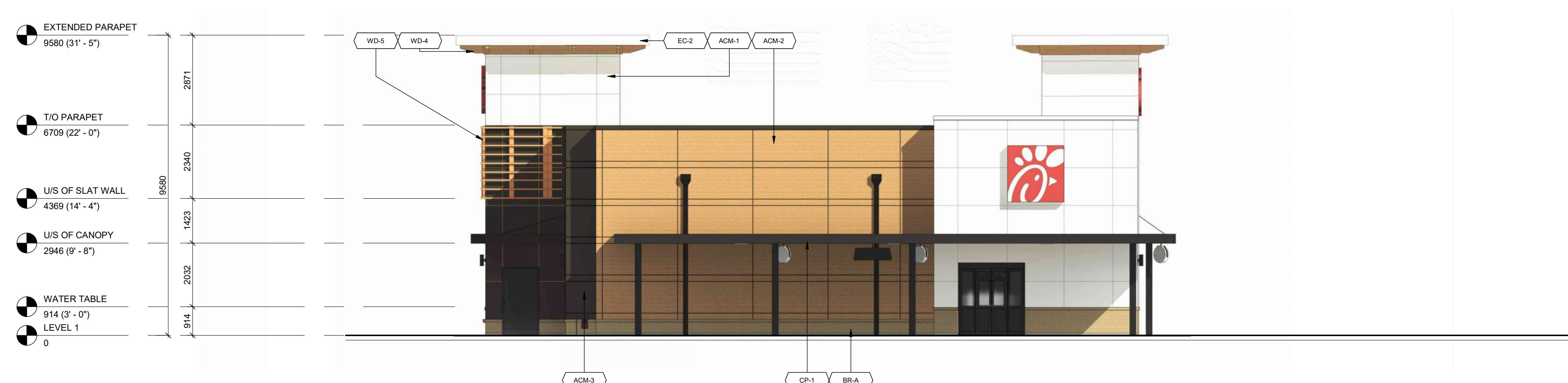
1 EAST ELEVATION - COLOURED
A111 1:100



2 WEST ELEVATION - COLOURED
A111 1:100



3 NORTH ELEVATION - COLOURED
A111 1:100



4 SOUTH ELEVATION - COLOURED
A111 1:100



EXTERIOR FINISH SCHEDULE						
MARK	DESCRIPTION	MANUFACTURER	MODEL NAME	MODEL NO.	COLOUR	NOTE
ACM-1	ALUMINUM COMPOSITE MATERIAL	ALPOLIC	SOLID, 30 YR	BNT	BONE WHITE	(FINAL SPEC & COLOUR T.B.D.)
ACM-2	ALUMINUM COMPOSITE MATERIAL	ALPOLIC	TIMBER SERIES, 20 YR	MPL	MPL MAPLE	(FINAL SPEC & COLOUR T.B.D.)
ACM-3	ALUMINUM COMPOSITE MATERIAL	ALPOLIC	SOLID, 30 YR	JBR	BRONZE	(FINAL SPEC & COLOUR T.B.D.)
BM-1	BREAK METAL	ALPOLIC	SOLID, 30 YR	JBR	BRONZE	COLOUR TO MATCH ACM-3
BM-2	BRICK VENEER (PRIMARY)	CANADA BRICK (FORMERLY...)	CANADA ARCHITECTURAL SERIE...	-	TAUPE MATTE	MORTAR 25H TAN
CP-1	CANOPY METAL FASCIA	DURA COAT	DC19ST-2703		DARK BRONZE	OIL RUBBED BRONZE METALLIC TEXTURE PVD
EC-1	PARAPET WALL COPING	DUROLAST / EXCEPTIONAL...			MIDNIGHT BRONZE	
EC-2	PARAPET WALL COPING	DUROLAST / EXCEPTIONAL...			WHITE	
PT-113	EXTERIOR PAINT	SHERWIN WILLIAMS			DARK BRONZE	
PT-200	EXTERIOR PAINT - TANGER BUILDING...	SHERWIN WILLIAMS			T.B.D.	
ST-1	STOREFRONT	YKK			DARK BRONZE (MATTE)	
WD-4	CORBEL	T.B.D.	N/A			TO MATCH ADJACENT DEVELOPMENT
WD-5	HORIZONTAL SLAT	T.B.D.	N/A			TO MATCH ADJACENT DEVELOPMENT

#	DATE	DESCRIPTION	BY
7	2023-08-03	ISSUE FOR SPA SUBMISSION 3	MHB
6	2023-07-18	ISSUE FOR SPA SUBMISSION 3	MHB
5	2023-07-13	ISSUE FOR SPA SUBMISSION 2	MHB
4	2023-06-30	ISSUE FOR SPA SUBMISSION 2	MHB
3	2023-08-14	ISSUE FOR SPA SUBMISSION 2	MHB
2	2023-08-14	ISSUE FOR SPA SUBMISSION 2	MHB
1	2023-03-07	ISSUE FOR REVIEW	MHB



PROJECT
CHICK-FIL TANGER OUTLETS OTTAWA
3000 PALLADIUM DRIVE, STITTSVILLE, ON K2S 1B9

DRAWING
CHICK-FIL-A COLOURED EXTERIOR ELEVATIONS

PROJECT NO.
12.258P01
PROJECT DATE
2023-02-14
DRAWN BY
Author
CHECKED BY
Checker
SCALE
N.T.S.

DRAWING NO.	REV
A111	7