



NORTH ELEVATION

UNIT #306
 TYPE 'C'
 OPT 3RD FLR #1
 CIVIC# 780 CDW

UNIT #297 (MODEL HOME)
 TYPE 'C' REV
 OPT 3RD FLR #1
 CIVIC# 528 SR



EAST ELEVATION

UNIT #302
 TYPE 'B' END REV
 OPT 3RD FLR #1
 CIVIC# 788 CDW

UNIT #303
 TYPE 'A'
 CIVIC# 786 CDW

UNIT #304
 TYPE 'B'
 OPT 3RD FLR #1
 CIVIC# 784 CDW

UNIT #305
 TYPE 'B' REV
 OPT 3RD FLR #1
 CIVIC# 782 CDW

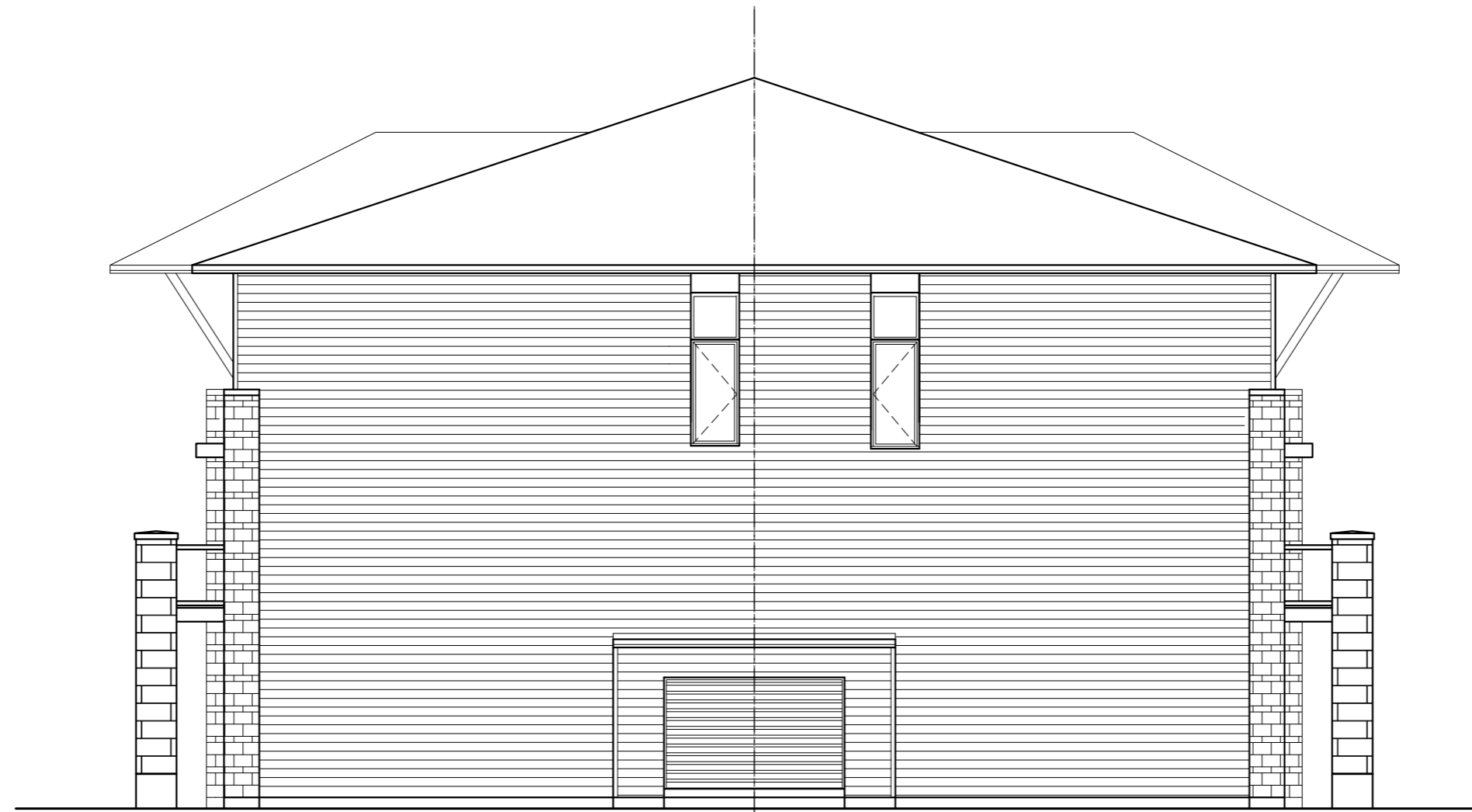
UNIT #306
 TYPE 'C'
 OPT 3RD FLR #1
 CIVIC# 780 CDW

TAMARACK

DATE DRAWN:	JUNE 4/18
DRAWN:	EK
CHECKED:	JH
SCALE:	1:100

CARDINAL CREEK
 - SPEC -

UNITS 297-306
 ELEVATION PLAN, E-STAR
 BLK 105



SOUTH ELEVATION

UNIT #301
TYPE 'A' END
OPT 3RD FLR #1
CIVIC# 520 SR

UNIT #302
TYPE 'B' END REV
OPT 3RD FLR #1
CIVIC# 788 CDW



WEST ELEVATION

UNIT #297 (MODEL HOME)
TYPE 'C' REV
OPT 3RD FLR #1
CIVIC# 528 SR

UNIT #298 (MODEL HOME)
TYPE 'B'
OPT 3RD FLR #1
CIVIC# 526 SR

UNIT #299 (MODEL HOME)
TYPE 'A' REV
OPT 3RD FLR #1
CIVIC# 524 SR

UNIT #300
TYPE 'B' REV
CIVIC# 522 SR

UNIT #301
TYPE 'A' END
OPT 3RD FLR #1
CIVIC# 520 SR

TAMARACK

DATE DRAWN:	JUNE 4/18
DRAWN:	EK
CHECKED:	JH
SCALE:	1:100

CARDINAL CREEK
- SPEC -

UNITS 297-306
ELEVATION PLAN, E-STAR
BLK 105