

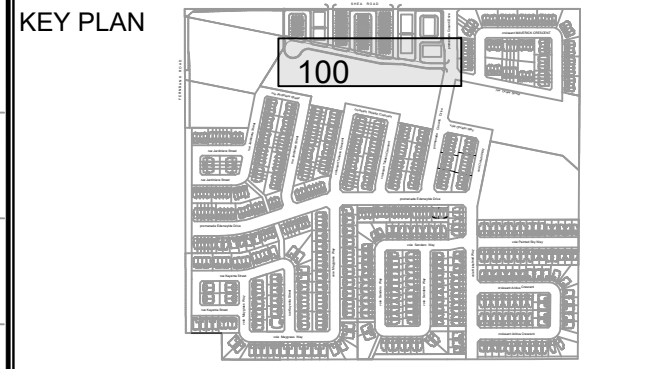
CLIENT  
DAVIDSON SHEA  
PROPERTY INC.

COPYRIGHT  
This drawing has been prepared solely for the intended use. Any reproduction or distribution for any purpose other than that authorized by IBI Group is forbidden. Written dimensions shall have precedence over scaled dimensions. Contractors shall verify and be responsible for all dimensions and conditions on the job, and IBI Group shall be informed of any variations from the dimensions and conditions shown on the drawing. Shop drawings shall be submitted to IBI Group for general concurrence before proceeding with fabrication.

IBI Group Professional Services (Canada) Inc.  
is a member of the IBI Group of companies.

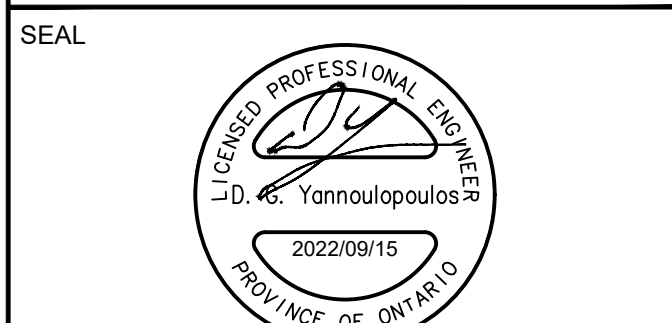
ISSUES	No.	DESCRIPTION	DATE
1	SUBMISSION NO. 1 FOR CITY REVIEW		2022-09-15
2			
3			
4			
5			
6			
7			
8			

SEE 010, 011, 012 FOR NOTES, LEGEND, CB TABLE, STREET SECTIONS AND DETAILS



CONSULTANTS

SCALE: CHUCK  
H 1:500 0 5 10 20m  
V 1:50 0 0.5 1.5 2.5m



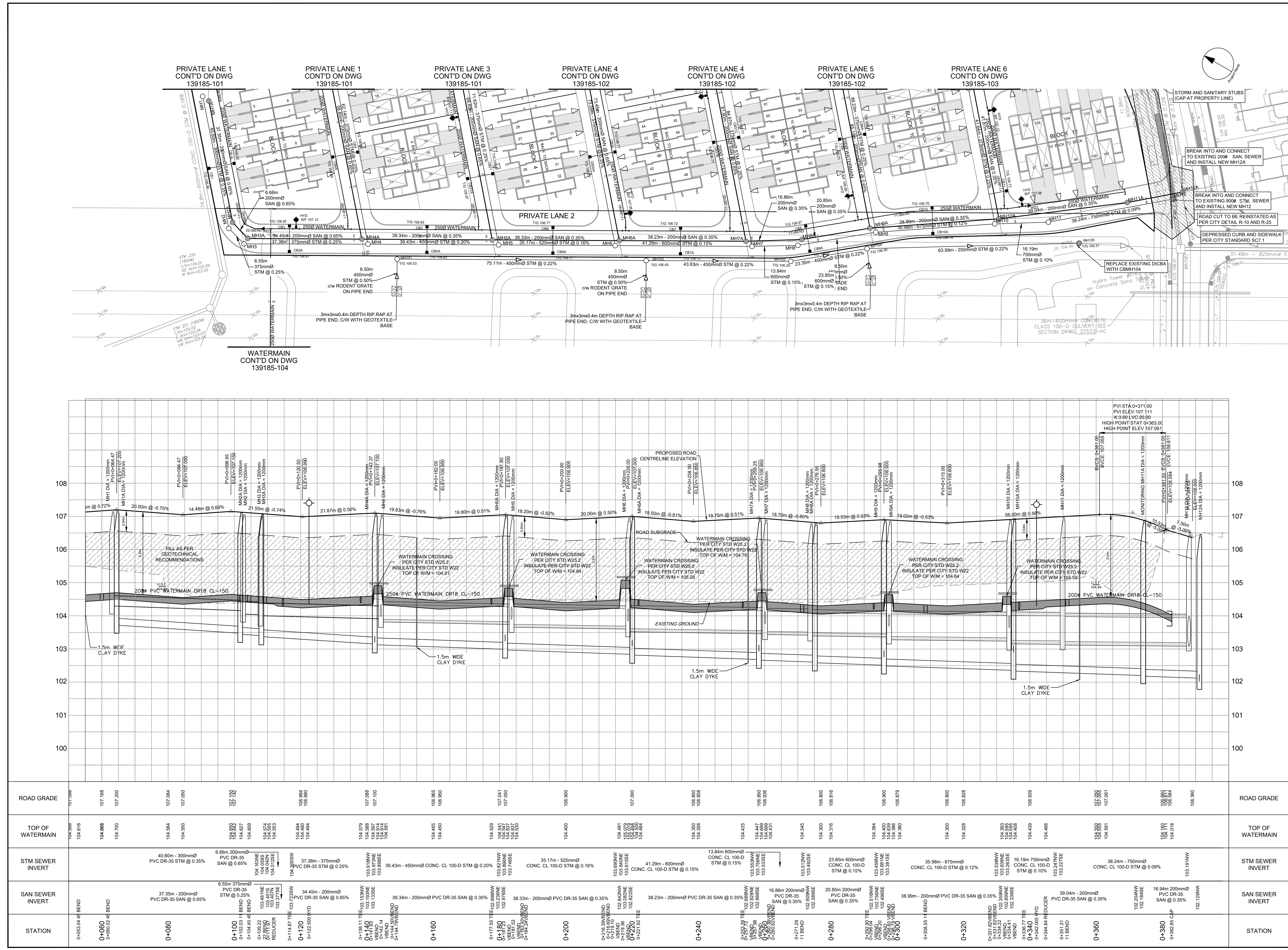
**IBI GROUP**  
Suite 400 - 333 Preston Street  
Ottawa ON K1S 5N4 Canada  
Tel: 613 225 1311 / 613 241 3300 Fax: 613 225 9868  
ibigroup.com

PROJECT  
1650 SHEA ROAD  
(OTTAWA, ON)

PROJECT NO:  
139185  
DRAWN BY:  
M.M.  
PROJECT MGR:  
R.M.  
CHECKED BY:  
A.C./A.B.  
APPROVED BY:  
D.G.Y.

SHEET TITLE  
PRIVATE LANE 2

SHEET NUMBER  
100  
ISSUE  
1



CITY FILE No. D07-1  
Last Saved: September 6, 2022, by mlinde. Plotted: Thursday, September 15, 2022, 8:24:10 AM by Brian Gieseler