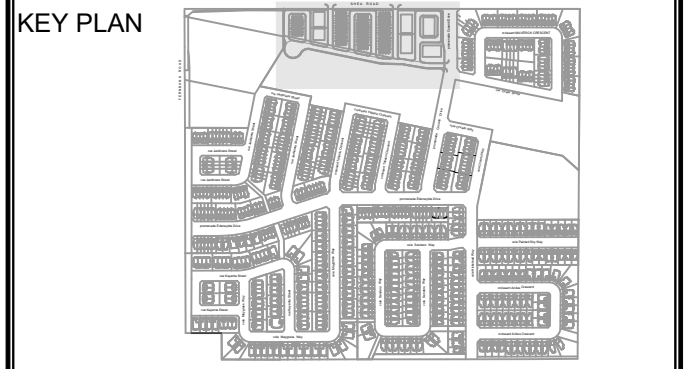


COPYRIGHT
This drawing has been prepared solely for the intended use. Any reproduction or distribution for any purpose other than authorized by IBI Group is forbidden. Written dimensions shall have precedence over scaled dimensions. Contractors shall verify and be responsible for all dimensions and conditions on the job, and IBI Group shall be informed of any variations from the dimensions and conditions shown on the drawing. Shop drawings shall be submitted to IBI Group for general conformance before proceeding with fabrication.

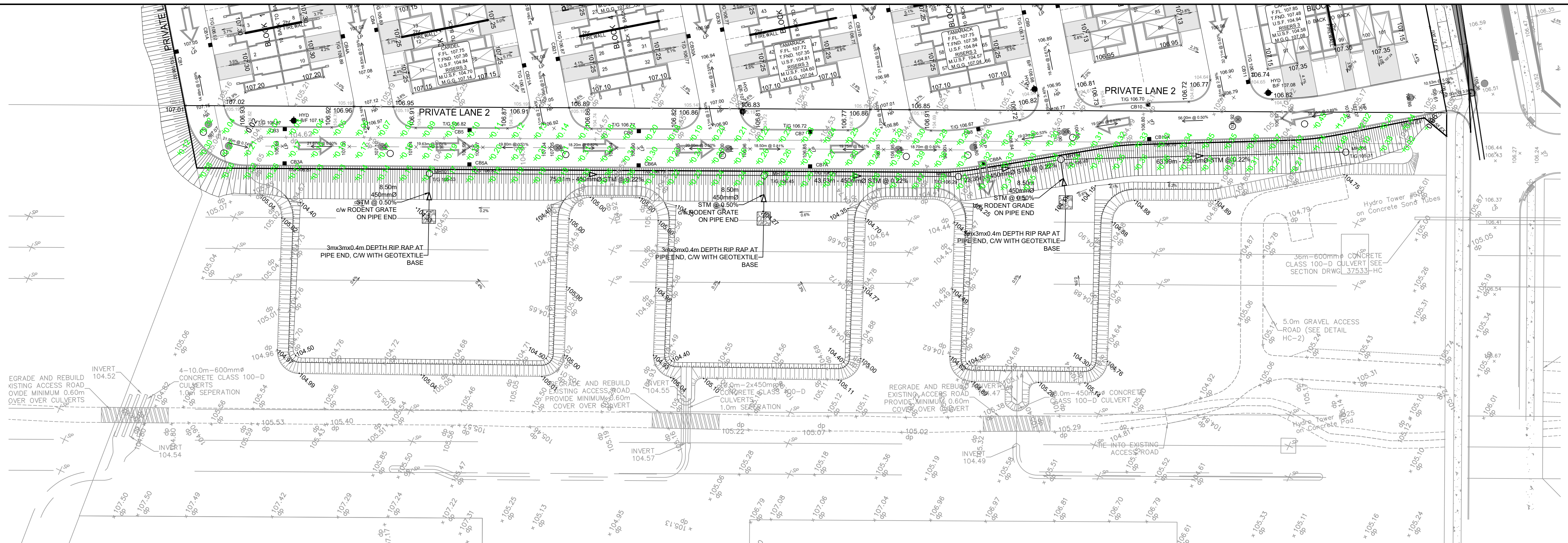
IBI Group Professional Services (Canada) Inc.
is a member of the IBI Group of companies.

ISSUES	No.	DESCRIPTION	DATE
	1	SUBMISSION NO. 1 FOR CITY REVIEW	2022-09-15
	2		
	3		
	4		
	5		
	6		
	7		
	8		

SEE 010, 011, 012 FOR NOTES, LEGEND, CB TABLE, STREET SECTIONS AND DETAILS.



CONSULTANTS



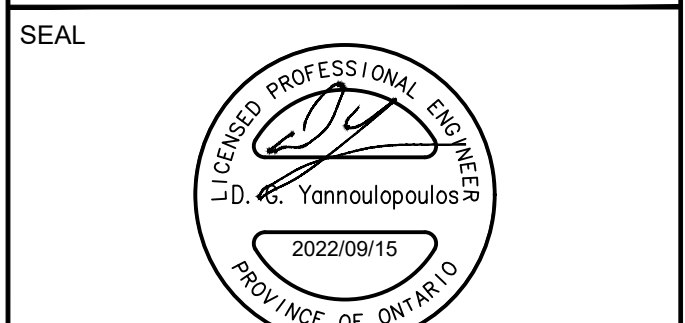
DRY POND FILL AREA

Cut/Fill Summary						
Name	Cut Factor	Fill Factor	2d Area	Cut	Fill	Net
Volume Lost Pond Area	1.000	1.000	3839.51sq.m	7.98 Cu. M.	1036.73 Cu. M.	1028.73 Cu. M.<Fill>
Totals			3839.51sq.m	7.98 Cu. M.	1036.73 Cu. M.	1028.73 Cu. M.<Fill>



DRY POND CUT AREA

Cut/Fill Summary						
Name	Cut Factor	Fill Factor	2d Area	Cut	Fill	Net
Dry Pond Added Cell 1	1.000	1.000	2030.96sq.m	567.41 Cu. M.	0.00 Cu. M.	567.41 Cu. M.<Cut>
Dry Pond Added Cell 2	1.000	1.000	1413.69sq.m	524.38 Cu. M.	0.00 Cu. M.	524.38 Cu. M.<Cut>
Dry Pond Added Cell 3	1.000	1.000	1097.49sq.m	544.17 Cu. M.	0.00 Cu. M.	544.17 Cu. M.<Cut>
Totals			4542.05sq.m	1636.57 Cu. M.	0.00 Cu. M.	1636.56 Cu. M.<Cut>



IBI GROUP
400 - 333 Preston Street
Ottawa ON K1S 5M4 Canada
tel 613 225 1311 fax 613 225 9868
ibigroup.com

PROJECT
1650 SHEA ROAD
(OTTAWA, ON)

PROJECT NO:
139185

DRAWN BY:
D.D.

PROJECT MGR:
R.M.

CHECKED BY:
A.C./A.B.

APPROVED BY:
D.G.Y.

SHEET TITLE
DRY POND COMPENSATION

SHEET NUMBER
201

ISSUE
1