



P: 647 660 7117 F: 647 660 7117
Suite 1020 181 Bay Street,
Toronto, ON M5J 2T3
info@designworkseng.com
www.designworkseng.com
COPYRIGHT 2023
DESIGN WORKS ENGINEERING LTD.

COPYRIGHT RESERVED

THESE DRAWINGS AND DESIGN ARE THE EXCLUSIVE PROPERTY OF DESIGN WORKS ENGINEERING LTD. AND MAY NOT BE REPRODUCED IN ANY WAY OR FORM WITHOUT THE DIRECT WRITTEN PERMISSION OF DESIGN WORKS ENGINEERING LTD.

NOTES

THIS DRAWING IS NOT TO BE USED FOR CONSTRUCTION UNLESS IT IS SIGNED AND SEALED, AND DRAWINGS HAVE BEEN ISSUED FOR CONSTRUCTION IN THE TABLE BELOW.

DO NOT SCALE THIS DRAWING.

No.	Description	Date
1	ISSUED FOR SPA	2023-03-23

ARCHITECT

CLIENT

SEAL	PERMIT
------	--------

DRAWN BY:	AMJ
CHECKED BY:	QASIM AKHTAR, E.I.T.
ENGINEER:	MOSES NORGA, P.ENG.
PROJECT #:	2023317
SCALE:	AS NOTED

PROJECT

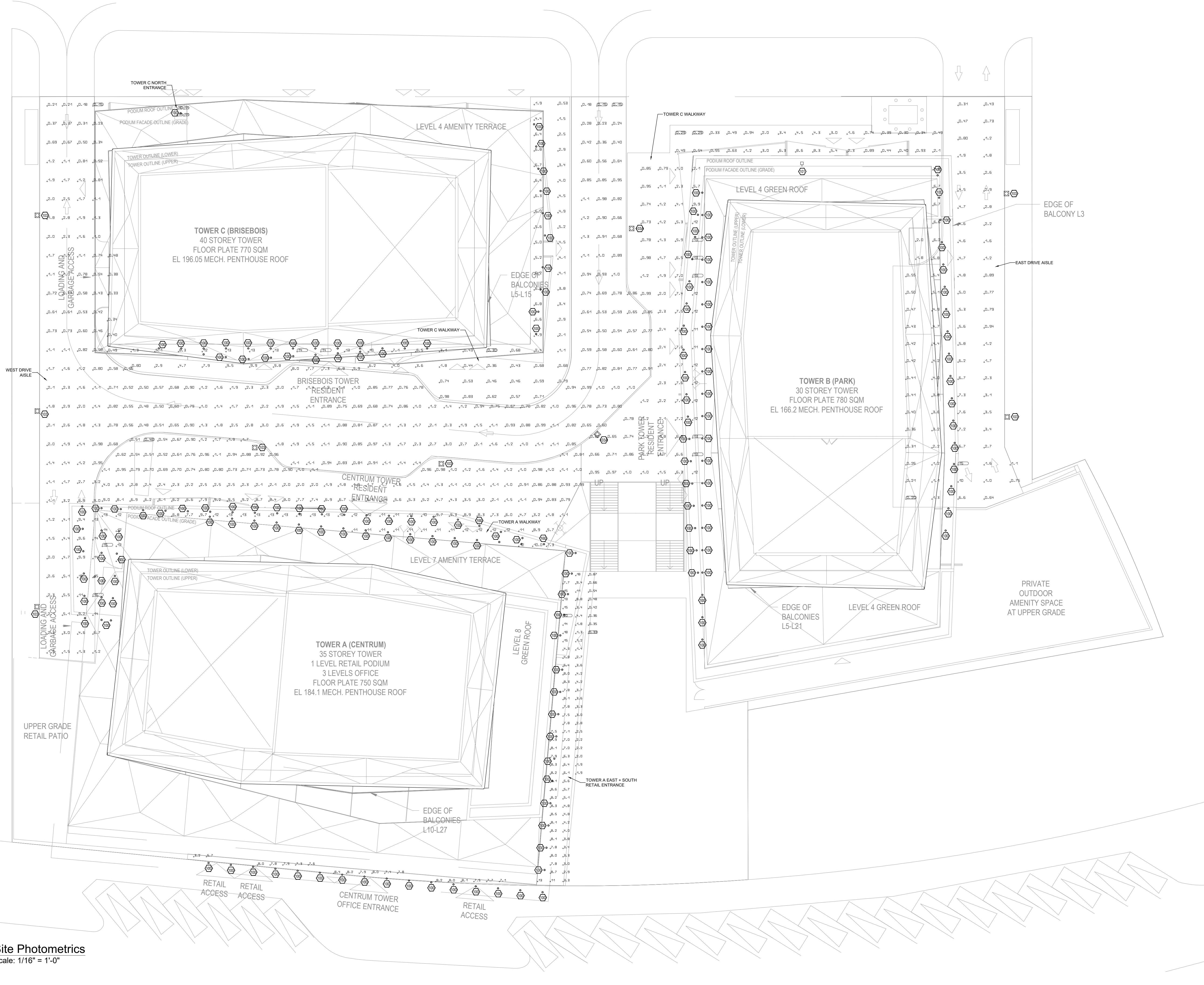
CENTRUM

265 Centrum Blvd Orléans, On K1E 3X7

DESCRIPTION

SITE LIGHTING CALCULATIONS

DRAWING NO.	E1.0	SHEET	1
			3



1 Site Photometrics
E1.0 Scale: 1/16" = 1'-0"

NORTH

COPYRIGHT RESERVED

THESE DRAWINGS AND DESIGN ARE THE EXCLUSIVE PROPERTY OF DESIGN WORKS ENGINEERING LTD. AND MAY NOT BE REPRODUCED IN ANY WAY OR FORM WITHOUT THE DIRECT WRITTEN PERMISSION OF DESIGN WORKS ENGINEERING LTD.

NOTES

THIS DRAWING IS NOT TO BE USED FOR CONSTRUCTION UNLESS IT IS SIGNED AND SEALED, AND DRAWINGS HAVE BEEN ISSUED FOR CONSTRUCTION IN THE TABLE BELOW.

DO NOT SCALE THIS DRAWING.

No.	Description	Date
1	ISSUED FOR SPA	2023-03-23

ARCHITECT

CLIENT

SEAL	PERMIT
------	--------

DRAWN BY:	AMJ
CHECKED BY:	QASIM AKHTAR, E.I.T.
ENGINEER:	MOSES NORGA, P.ENG.
PROJECT #:	2023317
SCALE:	AS NOTED

PROJECT

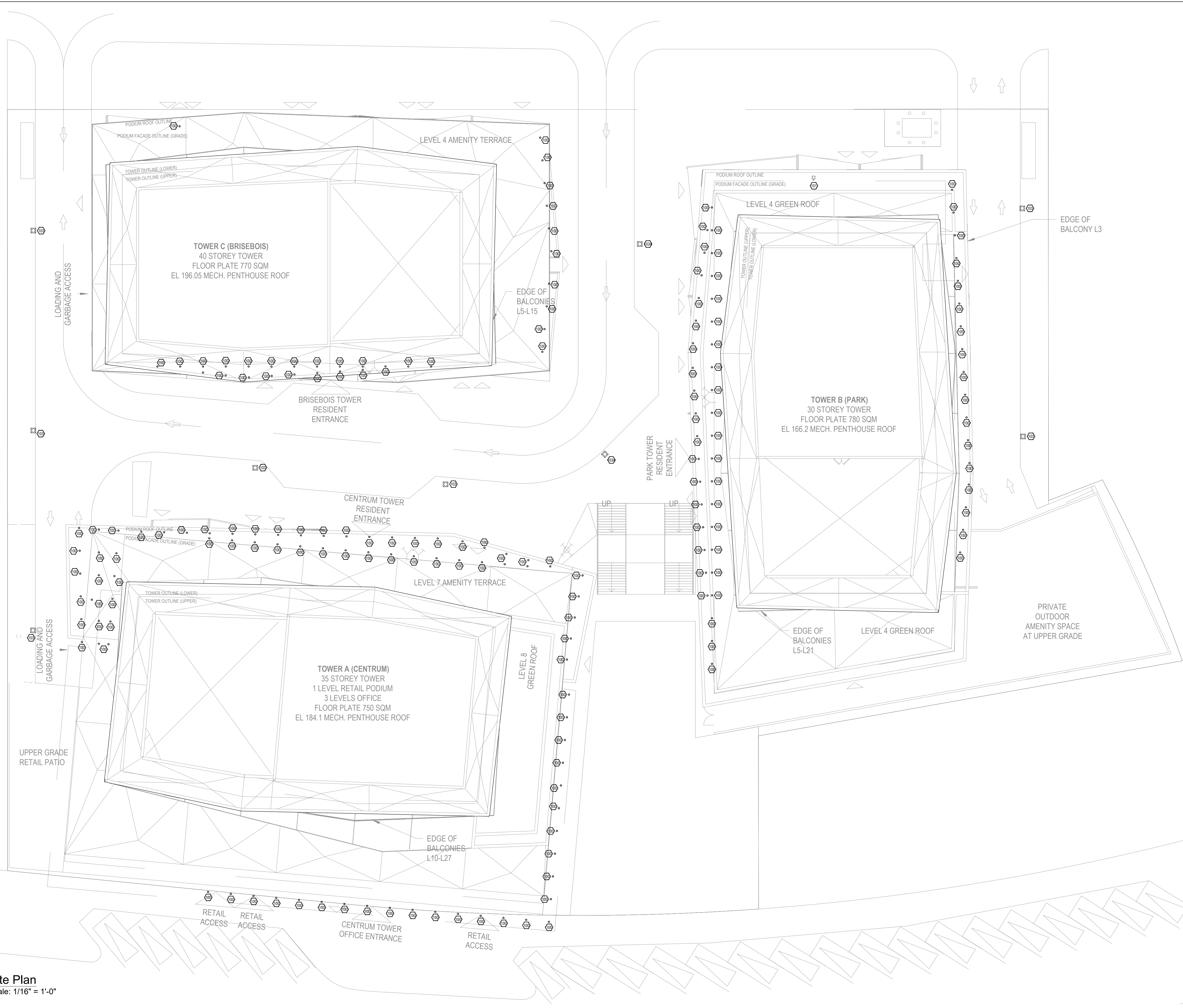
CENTRUM

265 Centrum Blvd Orléans, On K1E 3X7

DESCRIPTION

SITE LIGHTING PLAN

DRAWING NO.	SHEET
E1.1	2 3





P: 647 660 7117 F: 647 660 7117
 Suite 1020 181 Bay Street,
 Toronto, ON M5J 2T3
 info@designworksend.com
 www.designworksend.com
 COPYRIGHT 2023
 DESIGN WORKS ENGINEERING LTD.

COPYRIGHT RESERVED
 THESE DRAWINGS AND DESIGN ARE THE EXCLUSIVE PROPERTY OF DESIGN WORKS ENGINEERING LTD. AND MAY NOT BE REPRODUCED IN ANY WAY OR FORM WITHOUT THE DIRECT WRITTEN PERMISSION OF DESIGN WORKS ENGINEERING LTD.

NOTES
 THIS DRAWING IS NOT TO BE USED FOR CONSTRUCTION UNLESS IT IS SIGNED AND SEALED, AND DRAWINGS HAVE BEEN ISSUED FOR CONSTRUCTION IN THE TABLE BELOW.
 DO NOT SCALE THIS DRAWING.

No.	Description	Date
1	ISSUED FOR SPA	2023-03-23

ARCHITECT

CLIENT

SEAL PERMIT


DRAWN BY: AMJ
 CHECKED BY: QASIM AKHTAR, E.I.T.
 ENGINEER: MOSES NORGA, P.ENG.
 PROJECT #: 2023317
 SCALE: AS NOTED

PROJECT
CENTRUM
 265 Centrum Blvd Orléans, On K1E 3X7

DESCRIPTION
LUMINAIRE SCHEDULES & DETAILS
 DRAWING NO. **E1.2** SHEET **3/3**



LUMINAIRES	4" LED DOWNLIGHT
LAMP	LED, 3000K
LUMENS	996
BALLAST	LED DRIVER
HOUSING	-
LENS	-
INPUT WATTAGE	14.4 W
MOUNTING	CEILING RECESSED
SPECIAL REQUIREMENTS	-
ACCEPTABLE PRODUCTS	DALS - RGR4-3K-BK (OR APPROVED EQUIVALENT)
LUMINAIRE TYPE	100



LUMINAIRES	EXTERIOR WALL LIGHT
LAMP	LED, 3000K
LUMENS	5719
BALLAST	LED DRIVER
HOUSING	-
LENS	-
INPUT WATTAGE	47.2 W
MOUNTING	EXTERIOR WALL - SURFACE
SPECIAL REQUIREMENTS	-
ACCEPTABLE PRODUCTS	LITHONIA - WPX2-LED-30K-MVOLT-DBLXD (OR APPROVED EQUIVALENT)
LUMINAIRE TYPE	102



LUMINAIRES	POST TOP
LAMP	LED, 3000K
LUMENS	3788
BALLAST	LED DRIVER
HOUSING	-
LENS	-
INPUT WATTAGE	48 W
MOUNTING	POST TOP WITH 12 FT HEIGHT
SPECIAL REQUIREMENTS	-
ACCEPTABLE PRODUCTS	COOPER LIGHTING - ARB-B2-LED-D1-T3-8030 (OR APPROVED EQUIVALENT)
LUMINAIRE TYPE	103



LUMINAIRES	POST TOP
LAMP	LED, 3000K
LUMENS	3784
BALLAST	LED DRIVER
HOUSING	-
LENS	-
INPUT WATTAGE	41 W
MOUNTING	POST TOP WITH 12 FT HEIGHT
SPECIAL REQUIREMENTS	-
ACCEPTABLE PRODUCTS	COOPER LIGHTING - ARB-B2-LED-D1-T5-8030 (OR APPROVED EQUIVALENT)
LUMINAIRE TYPE	103A

#	NAME	PARAMETER	MIN	MAX	AVERAGE	MEAN/MIN	MAX/MIN
1	WEST DRIVE AISLE	PERPENDICULAR ILLUMINANCE (ADAPTIVE)	0.13 fc	16.1 fc	1.66 fc	13.07	126.5
2	TOWER C WALKWAY	PERPENDICULAR ILLUMINANCE (ADAPTIVE)	0.19 fc	13.7 fc	4.55 fc	23.45	70.81
3	TOWER A WALKWAY	PERPENDICULAR ILLUMINANCE (ADAPTIVE)	0.47 fc	15.3 fc	5.05 fc	10.85	32.87
4	TOWER B WALKWAY	PERPENDICULAR ILLUMINANCE (ADAPTIVE)	0.25 fc	13.6 fc	4.10 fc	16.28	54.13
5	EAST DRIVE AISLE	PERPENDICULAR ILLUMINANCE (ADAPTIVE)	0.13 fc	16.7 fc	2.84 fc	21.84	128.8
6	TOWER A EAST+SOUTH RETAIL ENTRANCES	PERPENDICULAR ILLUMINANCE (ADAPTIVE)	0.32 fc	20.7 fc	6.40 fc	20.15	65.12
7	TOWER C NORTH ENTRANCE	PERPENDICULAR ILLUMINANCE (ADAPTIVE)	8.30 fc	12.2 fc	10.6 fc	1.28	1.47