

265 CENTRUM

CITY COMMENTS RESPONSE

January 12, 2024

B+H

Accessibility

- 4.8. The pre-consultation comments noted the need for an AODA compliant pedestrian connection from Centrum to the entries of Towers B and C. Neither the pre-consult concept, nor the concept of September 2022 suggested that this would not be possible (both images below).

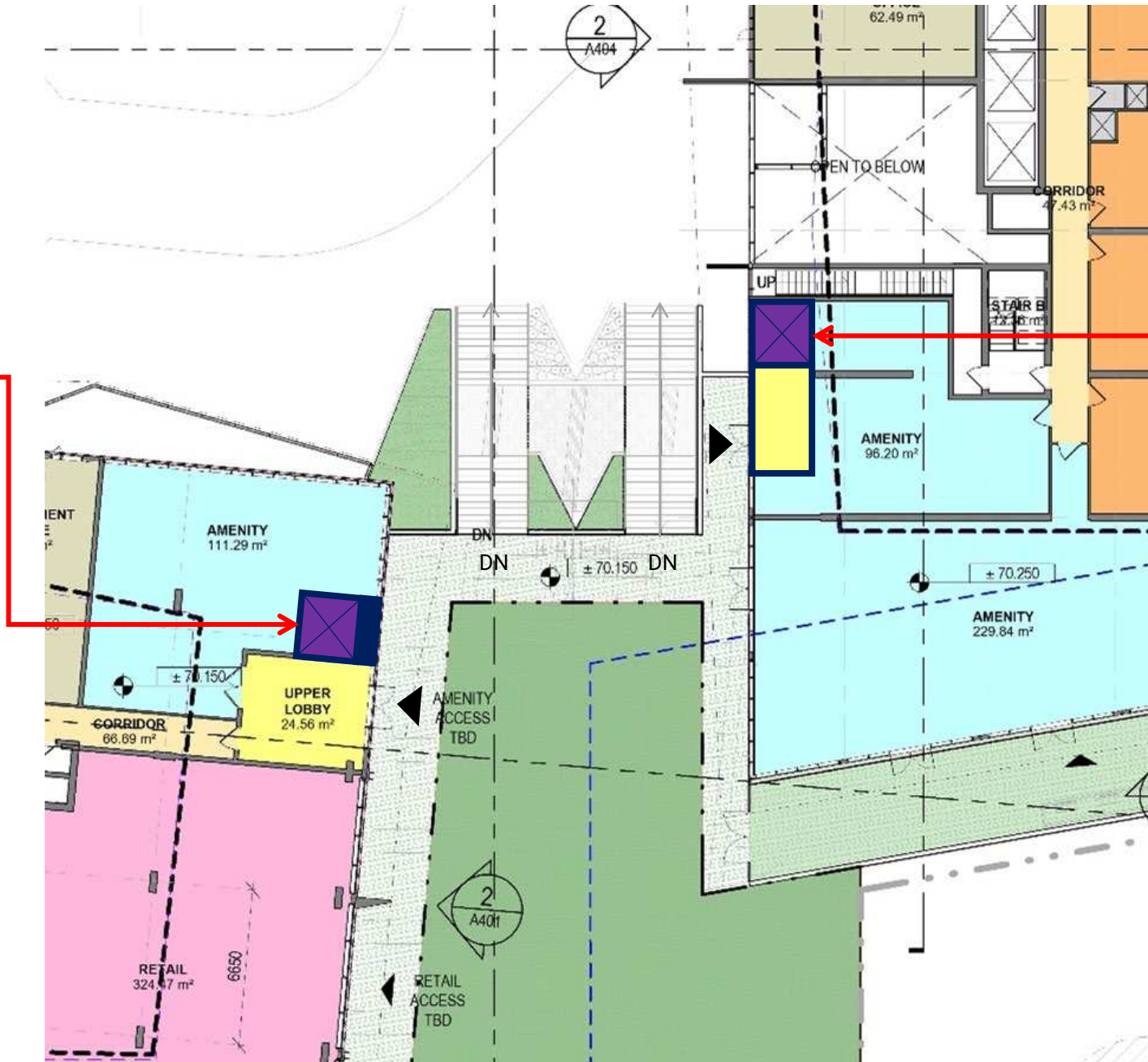
The current submission shows a significant staircase, which is in no way accessible. People living in Tower C, who may use wheelchairs, canes, walkers, strollers etc. will be required to go all the way around Brisebois to get to any uses on Centrum, including bus service.

The plan needs to be reworked to include an AODA compliant connection, as clearly noted in the original pre-consult comments provided in Spring 2022.

ACCESSIBILITY

UPPER GRADE

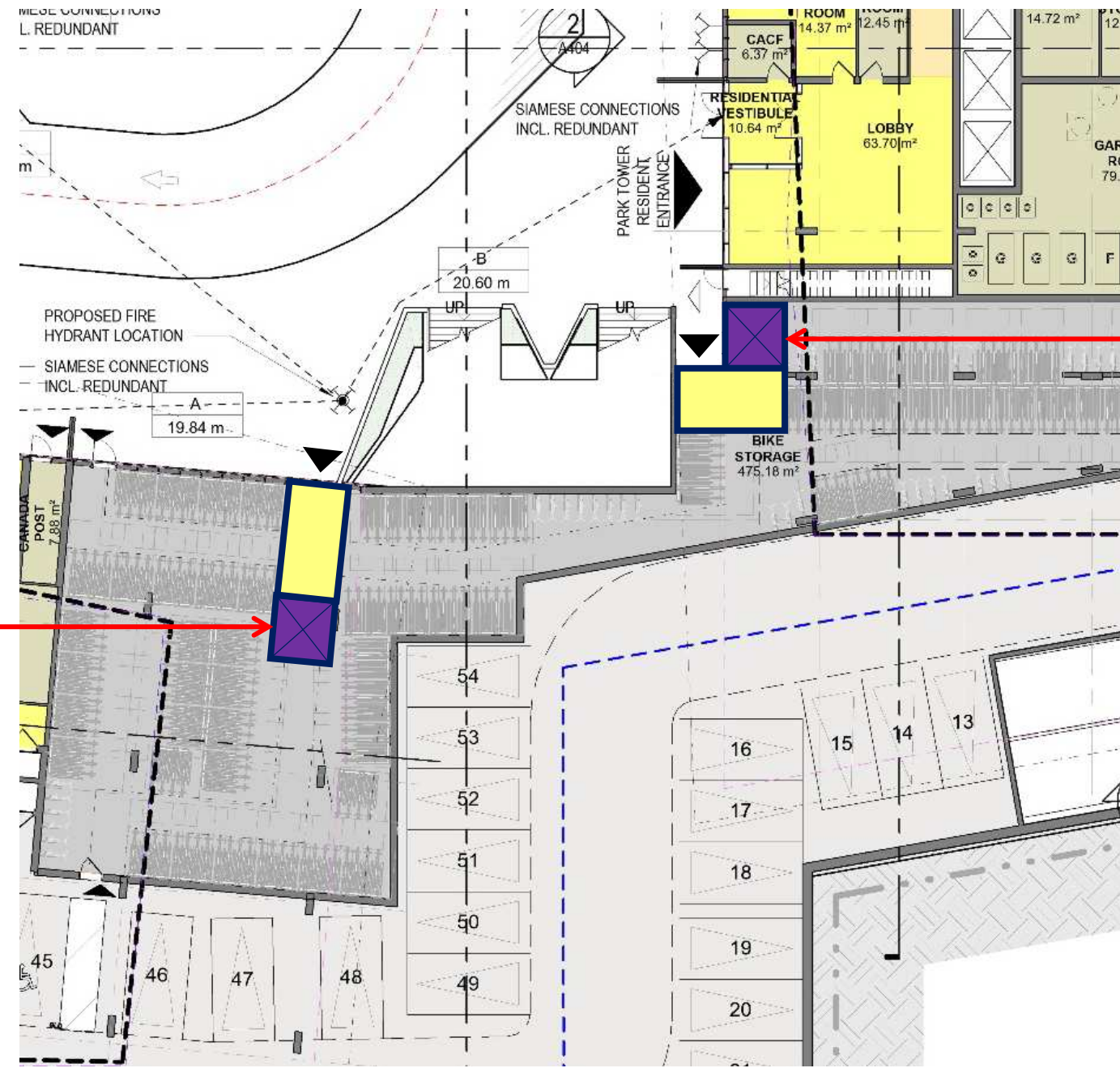
1



2

ACCESSIBILITY

LOWER GRADE



1

MORE IMPACT ON
BIKE PARKING

2

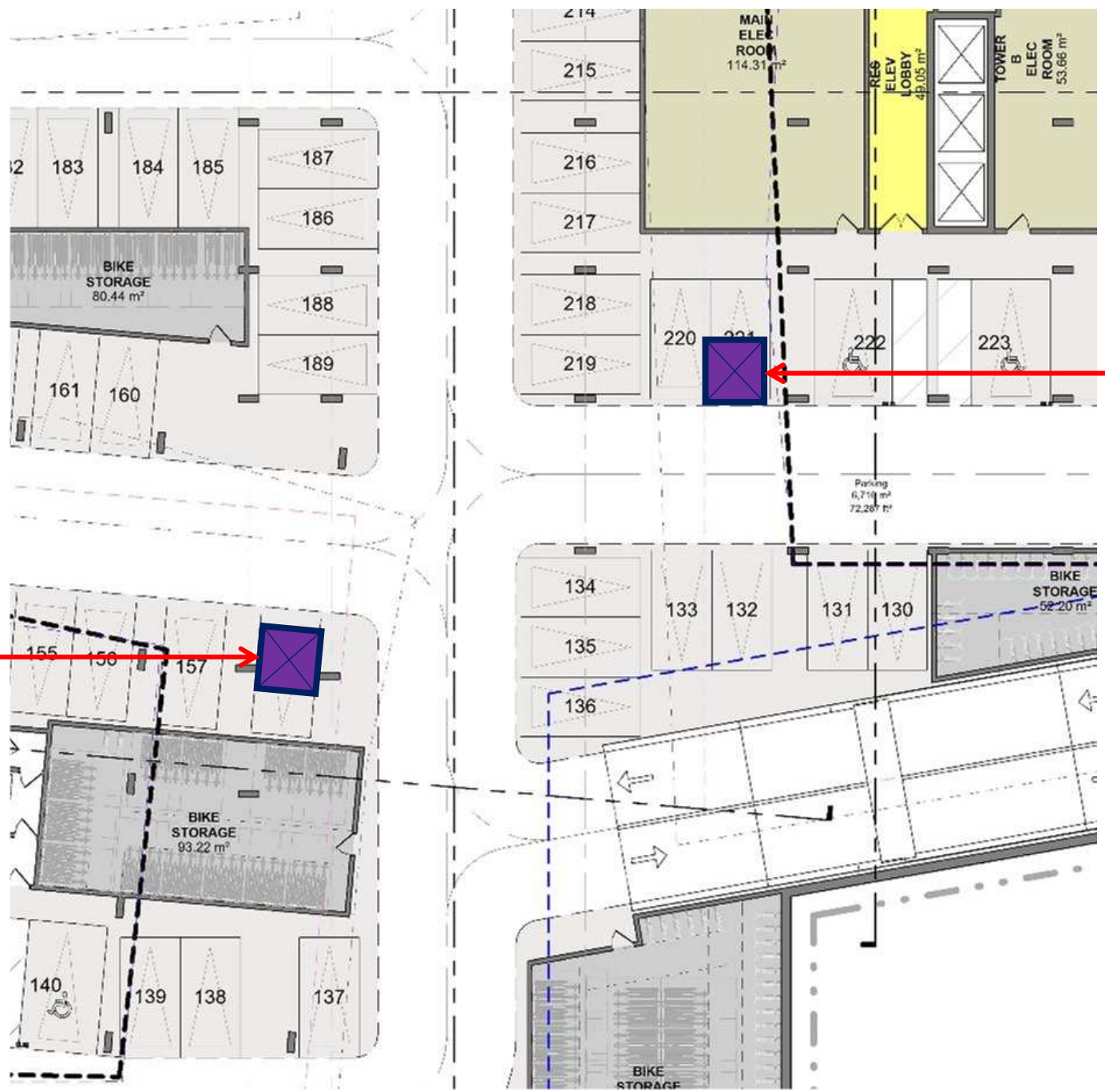
LESS IMPACT ON
BIKE PARKING

ACCESSIBILITY

P1

1
PIT – LOSE 1
PARKING SPOT

2
PIT – LOSE 1
PARKING SPOT



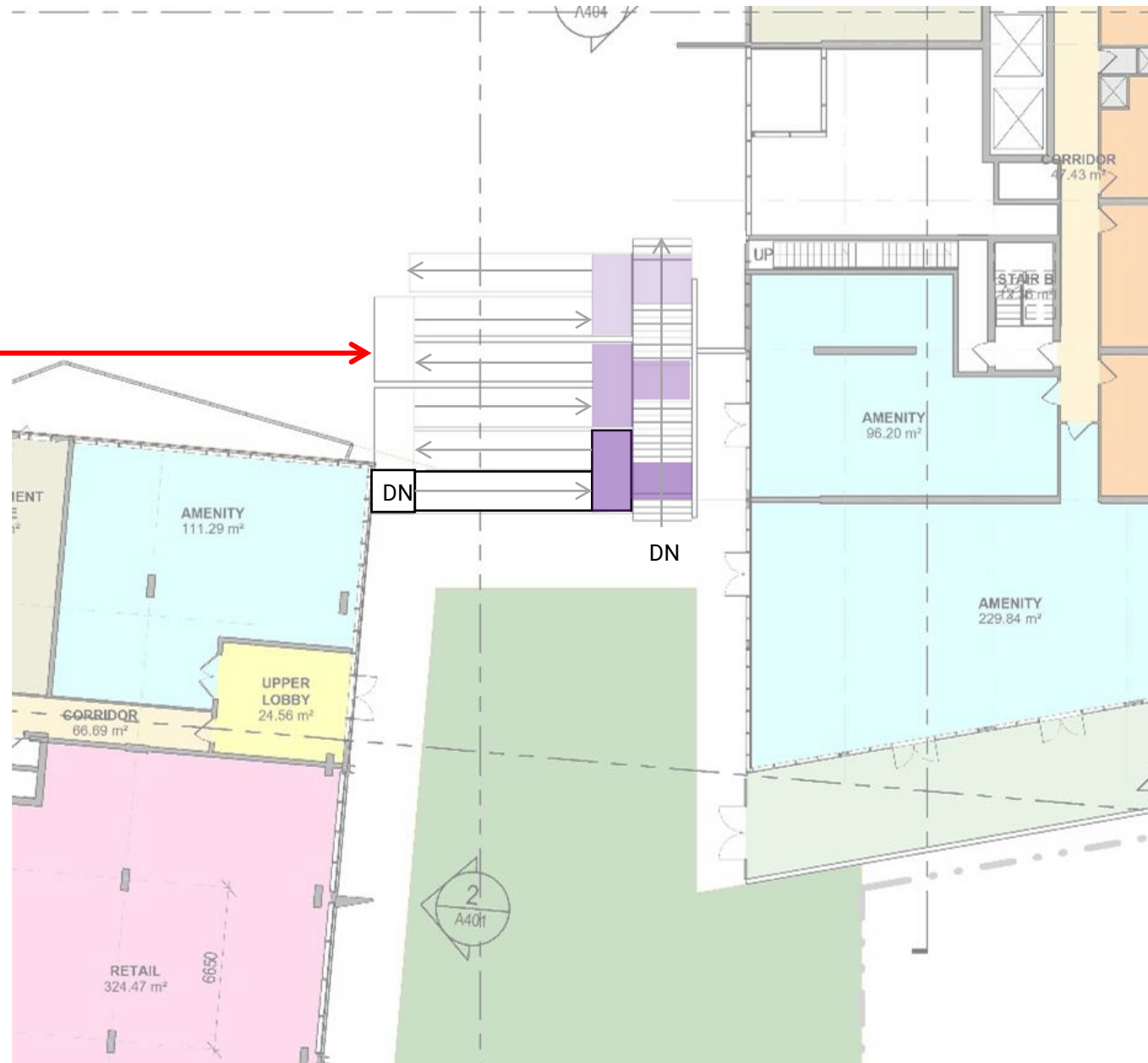
ACCESSIBILITY

UPPER GRADE

3

RAMP AT 10%
(MAX EXTERIOR
RAMP SLOPE)

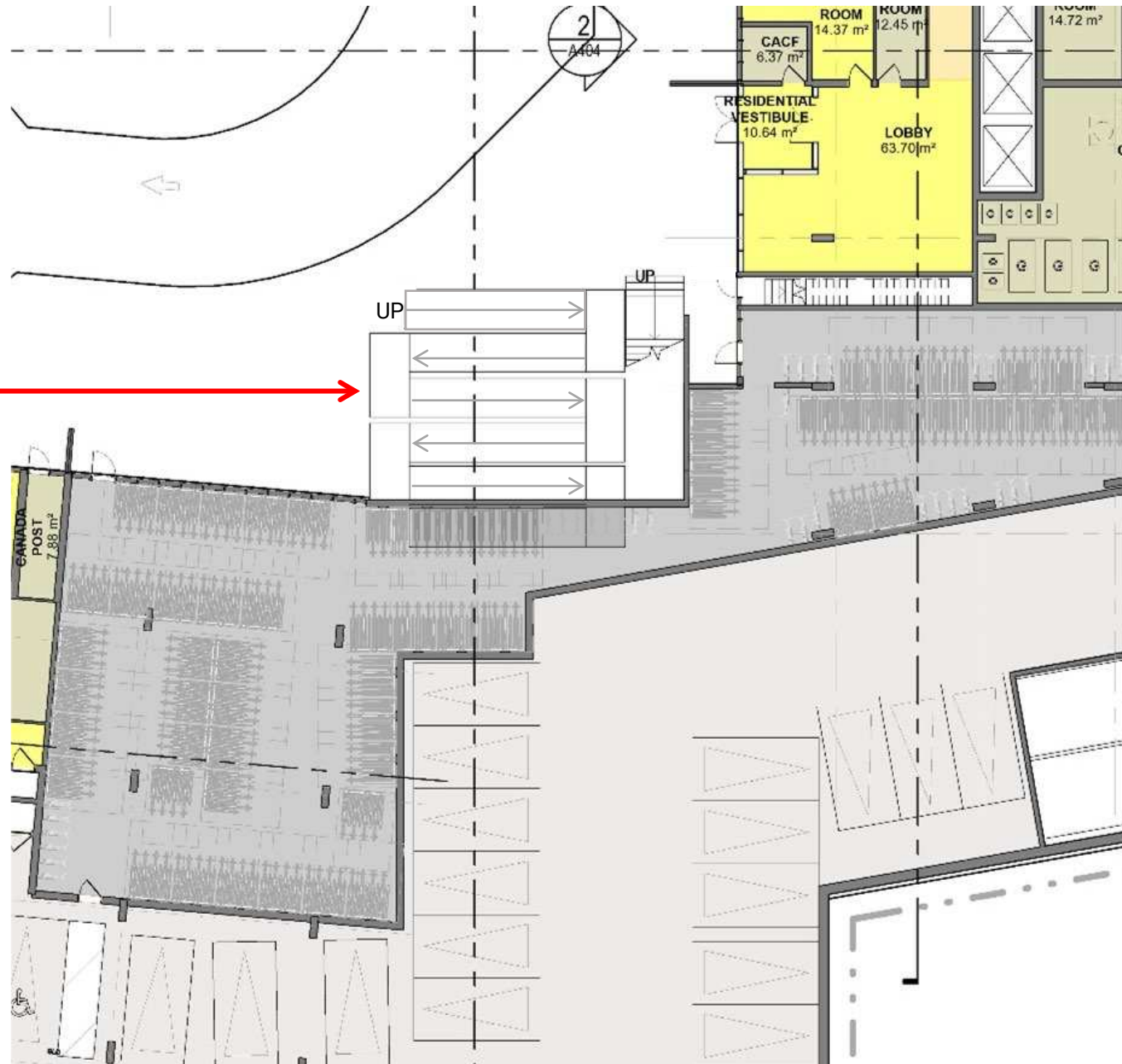
TO BE STUDIED
TO OPTIMIZE
ALIGNMENT WITH
STAIR LANDINGS



ACCESSIBILITY

LOWER GRADE

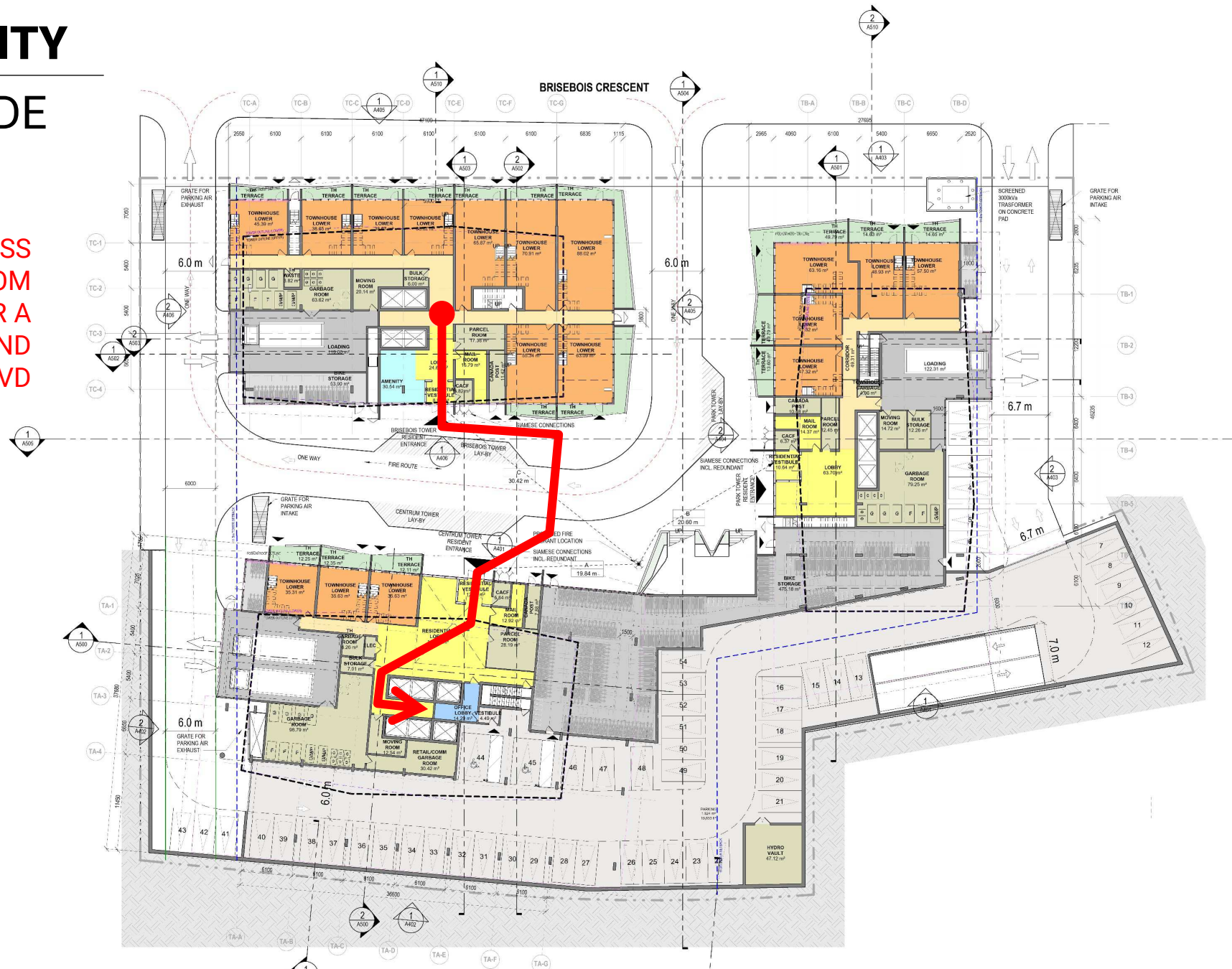
3



ACCESSIBILITY

LOWER GRADE

ACCESSIBLE ACCESS
ROUTE FROM
TOWER C - TOWER A
AMENITIES AND
CENTRUM BLVD



ACCESSIBILITY

UPPER GRADE

ACCESSIBLE ACCESS
ROUTE FROM
TOWER C - TOWER A
AMENITIES AND
CENTRUM BLVD



265 CENTRUM

CITY COMMENTS RESPONSE

January 12, 2024

B+H