

ISSUED

No.	Date	Description
0	2023 MAR 22	ISSUED FOR SITE PLAN APPROVAL
1	2023 MAY 12	ISSUED FOR 100% SCHEMATIC DESIGN
2	2023 MAY 18	ISSUED FOR REZONING AND SITE PLAN CONTROL - RESUBMISSION #1
3	2023 JUL 13	ISSUED FOR SITE PLAN CONTROL - RESUBMISSION #2
4	2023 AUG 25	ISSUED FOR 100% DESIGN DEVELOPMENT
5	2023 DEC 11	ISSUED FOR SITE PLAN CONTROL - RESUBMISSION

LEGEND

- NEW AREA DRAIN (REFER TO MECHANICAL FOR CONTINUATION)
- NEW CATCH-BASIN
- NEW STORM SEWER
- NEW SANITARY SEWER
- NEW WATERMAIN
- NEW WATER VALVE AND VALVE BOX (W24)
- EXISTING STORMS/SANITARY MANHOLE
- EXISTING STORM SEWER
- EXISTING SANITARY SEWER BY
- EXISTING WATERMAIN
- ▼ NEW ENTRANCE
- STORMWATER MANAGEMENT CISTERN
- SITE BOUNDARY
- EDGE OF SUBSTRUCTURE
- ▼ ENTRANCE OF PARKING GARAGE ACCESS RAMP
- PROPERTY LINE

CATCH BASIN DATA

NO.	COVER	STRUCT.	ELEVATION		NOTES	CB CONNECTION		
			T/FRAME	LOW/INV		DIA (mm)	TYPE	LENGTH (m)
CB1	S22	705.010B	61.00	59.72		250	PVC DR35	N/A
CB2	S22	705.010B	58.78	57.50		250	PVC DR35	5.5
CBMH1	S28.1	701.011	61.20	59.92		250	PVC DR35	7.5

NEW STORM STRUCTURE

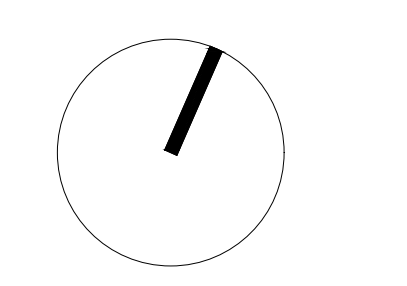
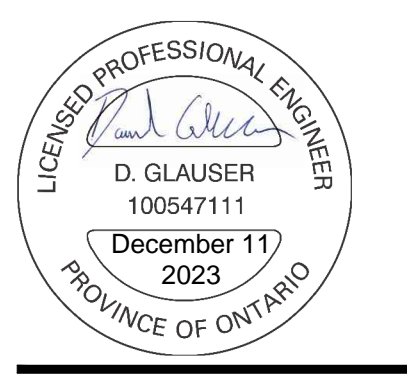
NO.	COVER	STRUCT.	ELEVATION		LOCATION		NOTES
			T/FRAME	INVERTS	NORTHING	EASTING	
STMH1	S24.1 OR OPSD 401.010 TYPE B	701.011	61.45	59.02 (N) 58.99(SW)	5032694.90	368763.08	

PIPE CROSSING TABLE

NO.	PIPE	CLEARANCE	OVER	UNDER	STM INV	OBV
1	200mmØ WM 0.97m	CLEARANCE OVER	250mmØ SAN	WM INV=59.90, STM OBV=58.93		
2	200mmØ WM 0.30m	CLEARANCE OVER	250mmØ STM	WM INV=59.50, STM OBV=59.20		
3	250mmØ STM 0.48m	CLEARANCE OVER	600mmØ STM	STM INV=58.78, SAN OBV=58.30		
4	200mmØ WM 0.41m	CLEARANCE OVER	200mmØ SAN	WM INV=59.48, STM OBV=59.07		
5	200mmØ STM 0.60m	CLEARANCE OVER	600mmØ SAN	STM INV=58.88, SAN OBV=58.28		

Andrew McCreight
ANDREW MCCREIGHT
MANAGER (A), DEVELOPMENT REVIEW CENTRAL
PLANNING, REAL ESTATE & ECONOMIC DEVELOPMENT
DEPARTMENT, CITY OF OTTAWA

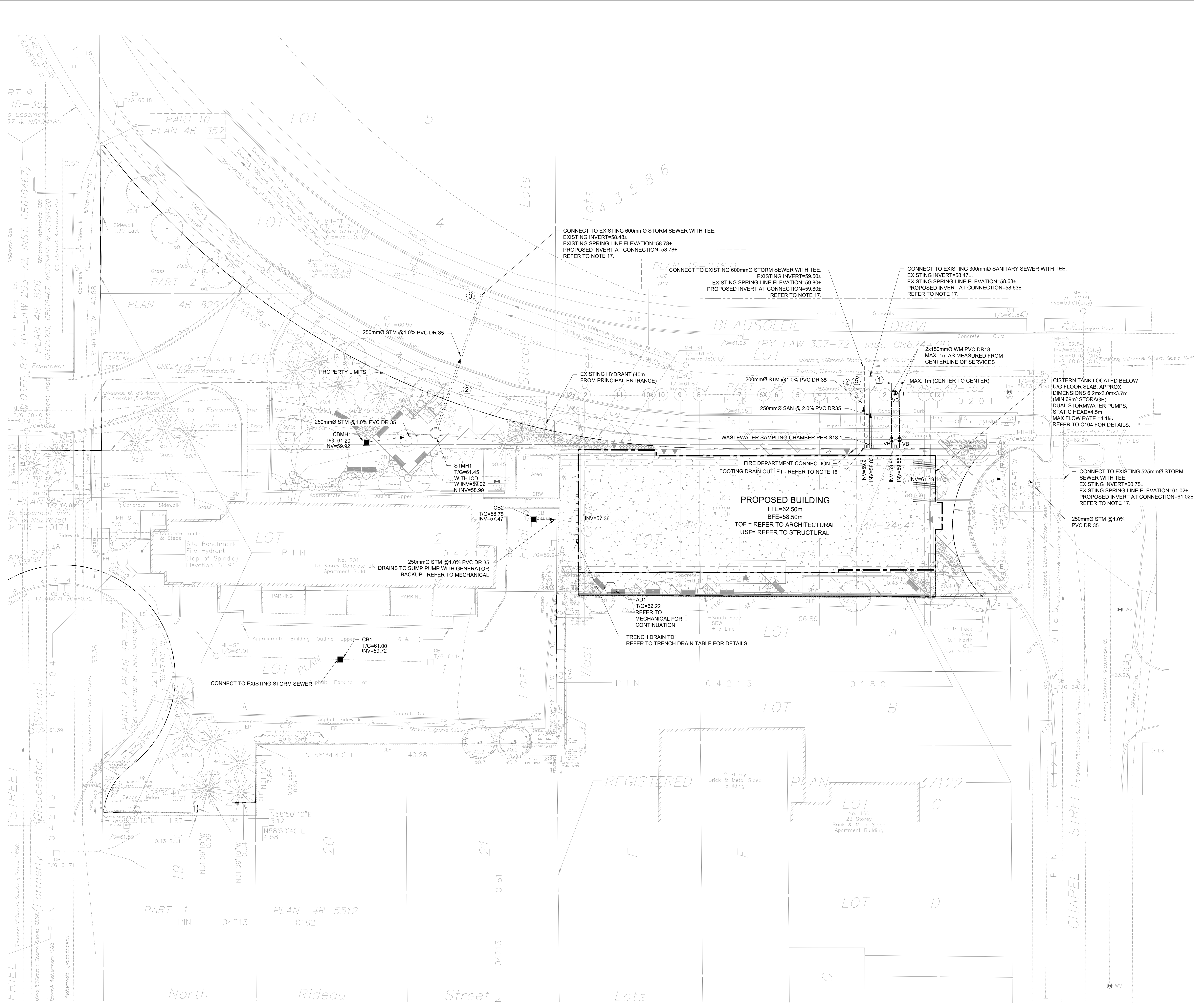
APPROVED
By Andrew McCreight at 4:14 pm, Dec 21, 2023



CONTRACTOR MUST CHECK & VERIFY ALL DIMENSIONS ON THE JOB. SEE 50% SCALE DRAWING.
ALL DRAWINGS, SPECIFICATIONS AND RELATED DOCUMENTS ARE THE COPYRIGHT PROPERTY OF THE ARCHITECT AND MUST BE RETURNED UPON REQUEST. REPRODUCTION OF DRAWINGS, SPECIFICATIONS AND RELATED DOCUMENTS IN PART OR IN WHOLE IS FORBIDDEN WITHOUT THE WRITTEN PERMISSION OF THE ARCHITECT.
THIS DRAWING IS NOT TO BE USED FOR CONSTRUCTION UNLESS SIGNED BY THE ARCHITECT.

OCH FRIEL STREET / CHAPEL
200201 FRIEL STREET
221021

SITE SERVICING PLAN
Scale: 1:200
Project No: 220262200
Date: 11/12/23
C001
#18930



- NOTES:**
- GENERAL**
 - TOPOGRAPHICAL SURVEY PREPARED BY FARLEY, SMITH & DENIS SURVEYING LTD. DATED SEPT 13, 2022. MTH ZONE 9, GEODETIC DATUM CGVD-1928-1978. SITE BENCHMARK HYDRANT TOP OF SPINDLE ELEV. 61.91
 - SERVICES ARE TO BE CONSTRUCTED TO 1.0m FROM FACE OF BUILDING.
 - REFER TO "SITE SEWERING AND STORMWATER MANAGEMENT DESIGN BRIEF" PREPARED BY MORRISON HERSHFELD.
 - REFER TO GEOTECHNICAL INVESTIGATION REPORT (AUG 2017) GEOTECH REPORT (04-29-1) PREPARED BY PATTERSON GROUP FOR SUBSURFACE CONDITIONS. CONSTRUCTION RECOMMENDATIONS AND GEOTECHNICAL INSPECTION REQUIREMENTS. THE GEOTECHNICAL CONSULTANT SHALL REVIEW EXCAVATIONS PRIOR TO THE PLACEMENT OF GRANULAR MATERIAL.
 - CONTRACTOR TO VERIFY ALL EXISTING UTILITY ELEVATIONS AT CONNECTION AND CROSSING LOCATIONS PRIOR TO CONSTRUCTION AND ADVISE THE ENGINEER OF ANY DISCREPANCIES.
 - UNLESS DIRECTED OTHERWISE ANY DAMAGED ASPHALT OR CURB (REGARDLESS OF WHETHER WITHIN OR EXTERNAL TO THE SITE) SHALL BE REINTEGRATED IN ACCORDANCE WITH CITY STD. DET. R10 AND S1.
 - UNLESS DIRECTED OTHERWISE THE CONTRACTOR SHALL REINSTATE ALL SIGNS, LIGHTING AND OTHER STREET FURNITURE DISTURBED BY THE WORK.
 - THE CONTRACTOR SHALL DEVELOP AND IMPLEMENT TRAFFIC MANAGEMENT PLANS FOR WORK IN RIGHT OF WAY IN ACCORDANCE WITH OTM BOOK 7.
 - THE CONTRACTOR SHALL PROVIDE ANY TEMPORARY SERVICING NEEDED, AND SHALL ALSO COORDINATE WITH OTHER TRADES AS NECESSARY.

- SEWERS**
- ALL STORM SEWERS, SANITARY SEWERS AND CATCH BASINS LEADS SHALL BE PVC DR 35 UNLESS OTHERWISE SPECIFIED.
 - REFER TO CITY STD. DETAIL S6 ON DRAWING C102 FOR SEWER INSTALLATION.
 - CONTRACTOR SHALL MAINTAIN EXISTING SEWER FLOWS DURING CONSTRUCTION IN ACCORDANCE WITH CITY OF OTTAWA SPECIFICATIONS.
 - ALL MAINTENANCE HOLES, CATCHBASINS AND AREA DRAINS SHALL BE ADJUSTED TO POST-CONSTRUCTION GRADE.
 - LEAKAGE TEST (SANITARY SEWER ONLY) AND CCTV INSPECTION SHALL BE COMPLETED AS PER CITY OF OTTAWA SPECIFICATIONS PRIOR TO THE INSTALLATION OF BASE COURSE ASPHALT.
 - BACKWATER VALVES TO BE INSTALLED AS PER CITY OF OTTAWA STANDARD S14 & S14.2.
 - CONTRACTOR TO CONFIRM EXACT ELEVATION OF SEWER PRIOR TO CONSTRUCTION AND NOTIFY ENGINEER OF ANY DISCREPANCIES. ROAD CUT REINSTATEMENT AS PER CITY OF OTTAWA STANDARD R10. CONNECTION TO SEWERMAIN PER S11.1
 - FOOTING DRAINS OUTLET TO THE BUILDING'S STAMP PUMP. THE BUILDING STAMP PUMP IS CONNECTED TO THE BACKUP GENERATOR.
- WATERMANS**
- REFER TO CITY STD. DETAIL W17 ON DRAWING C102 FOR WATERMAIN INSTALLATION.

- ALL WATERMAIN MATERIALS AND CONSTRUCTION METHODS SHALL BE IN ACCORDANCE WITH THE LATEST EDITION OF THE CITY OF OTTAWA STANDARD SPECIFICATIONS AND STANDARD DRAWINGS. PVC PIPE TO BE CLASS 150 DR18 TO LATEST EDITION OF A.W.W.A. SPECIFICATION C900 AND CSA B137.3 LATEST AMENDMENT WITH GASKETED BELL AND SPIGOT COUPLINGS.
- THE CONTRACTOR SHALL BE RESPONSIBLE FOR OBTAINING A WATER PERMIT AS REQUIRED FROM THE CITY OF OTTAWA, AND COMPLYING WITH ALL CITY OF OTTAWA REQUIREMENTS. THE CITY MAY REQUIRE THAT CERTAIN ACTIVITIES (E.G. VALVE OPERATION, CONNECTION OF NEW WATER SERVICE TO EXISTING WATERMAIN, DISINFECTION) BE CARRIED OUT ONLY BY CITY FORCES.
- ALL VALVES 300mm DIAMETER AND SMALLER SHALL INCLUDE A VALVE BOX AS PER W24.
- THE NEW WATERMAIN IS TO BE INSTALLED WITH A MINIMUM OF 2.4m COVER WHERE 2.4m COVER IS NOT POSSIBLE, PROVIDE INSULATION IN ACCORDANCE WITH CITY OF OTTAWA STANDARD DETAILS W22 & W23.
- THRUST RESTRAINT SHALL BE PROVIDED BY BOTH RESTRAINING/RETAINING RINGS AND THRUST BLOCKS AT ALL DEAD END CAPS, PLUGS, VALVES, BENDS AND REDUCERS AS PER CITY OF OTTAWA STANDARD DETAILS W25.3, W25.4, W25.5 AND W25.6. ALL TEMPORARY THRUST RESTRAINTS ARE THE RESPONSIBILITY OF THE CONTRACTOR.
- TRACER WIRE SHALL BE PROVIDED FOR ALL NEW PVC WATERMANS IN ACCORDANCE WITH THE SPECIFICATIONS AND CITY OF OTTAWA STANDARD DETAIL W36.
- CATHODIC PROTECTION SHALL BE PROVIDED FOR ALL NEW WATERMANS IN ACCORDANCE WITH THE SPECIFICATIONS AND CITY OF OTTAWA STANDARD DETAILS W39, W40, W41, W42 AND W47. CATHODIC PROTECTION OF EXISTING WATERMANS SHALL ALSO BE PROVIDED AT CONNECTIONS BETWEEN EXISTING AND NEW WATERMANS.

- ADJUST ALL VALVE CHAMBERS, VALVE BOXES AND HYDRANTS TO FINISHED GRADE.
- UTILITY NOTE**
- THE POSITION OF POLE LINES, CONDUITS, WATERMANS, SEWERS AND OTHER UNDERGROUND AND OVERGROUND UTILITIES AND STRUCTURES IS NOT NECESSARILY SHOWN ON THE CONTRACT DRAWING AND, WHERE SHOWN, THE ACCURACY OF THE POSITION OF SUCH UTILITIES AND STRUCTURES IS NOT GUARANTEED. BEFORE STARTING WORK THE CONTRACTOR SHALL INFORM HIMSELF OF THE EXACT LOCATION OF ALL SUCH UTILITIES AND STRUCTURES, AND SHALL ASSUME ALL LIABILITY FOR DAMAGE TO THEM. THE CONTRACTOR WILL BE RESPONSIBLE FOR SUPPORTING AND PROTECTING ANY EXISTING UTILITIES AS REQUIRED, IN ACCORDANCE WITH THE UTILITY OWNERS' REQUIREMENTS. CONTRACTOR IS REQUIRED TO OBTAIN LOCATES, IN ADVANCE OF EXCAVATION WORK, AND FORWARD COPIES OF THE LOCATES TO THE CONSULTANT AND THE OWNER PRIOR TO EXCAVATION.
 - ALL CROSSING OF EX. UTILITIES TO BE IN ACCORDANCE WITH CITY STD. DET. S10

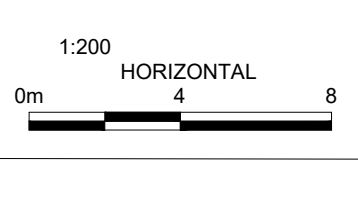
TRENCH DRAIN DATA

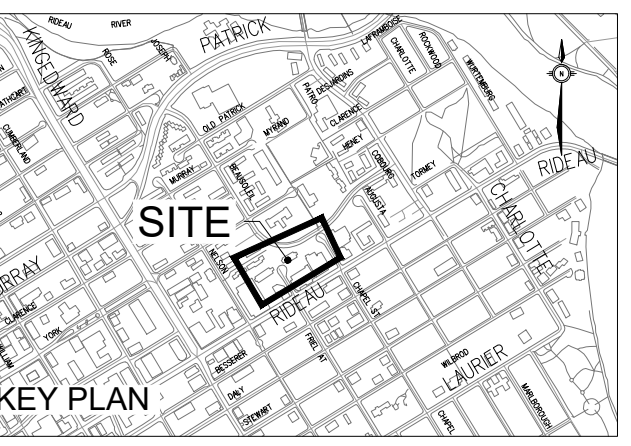
NO.	TRENCH DRAIN WIDTH	GRATE	ELEVATION		TO CONNECTION			
			T/FRAME	LOW/INV	DIA (mm)	TYPE	LENGTH (m)	INV.
T01	100mm	STAINLESS STEEL, ACCESSIBLE, HEEL SAFE, LIGHT DUTY (ACO 447044480 OR APPROVED EQUIVALENT)	58.50	57.70	200	PVC DR35	1.2	REFER TO MECHANICAL

NOTE: POLYMER CONCRETE TRENCH DRAIN WITH 2% INTERNAL SLOPE AND MATCHING CATCH BASIN, UNLESS OTHERWISE SPECIFIED.

INLET CONTROL DEVICE DATA TABLE - STMH1

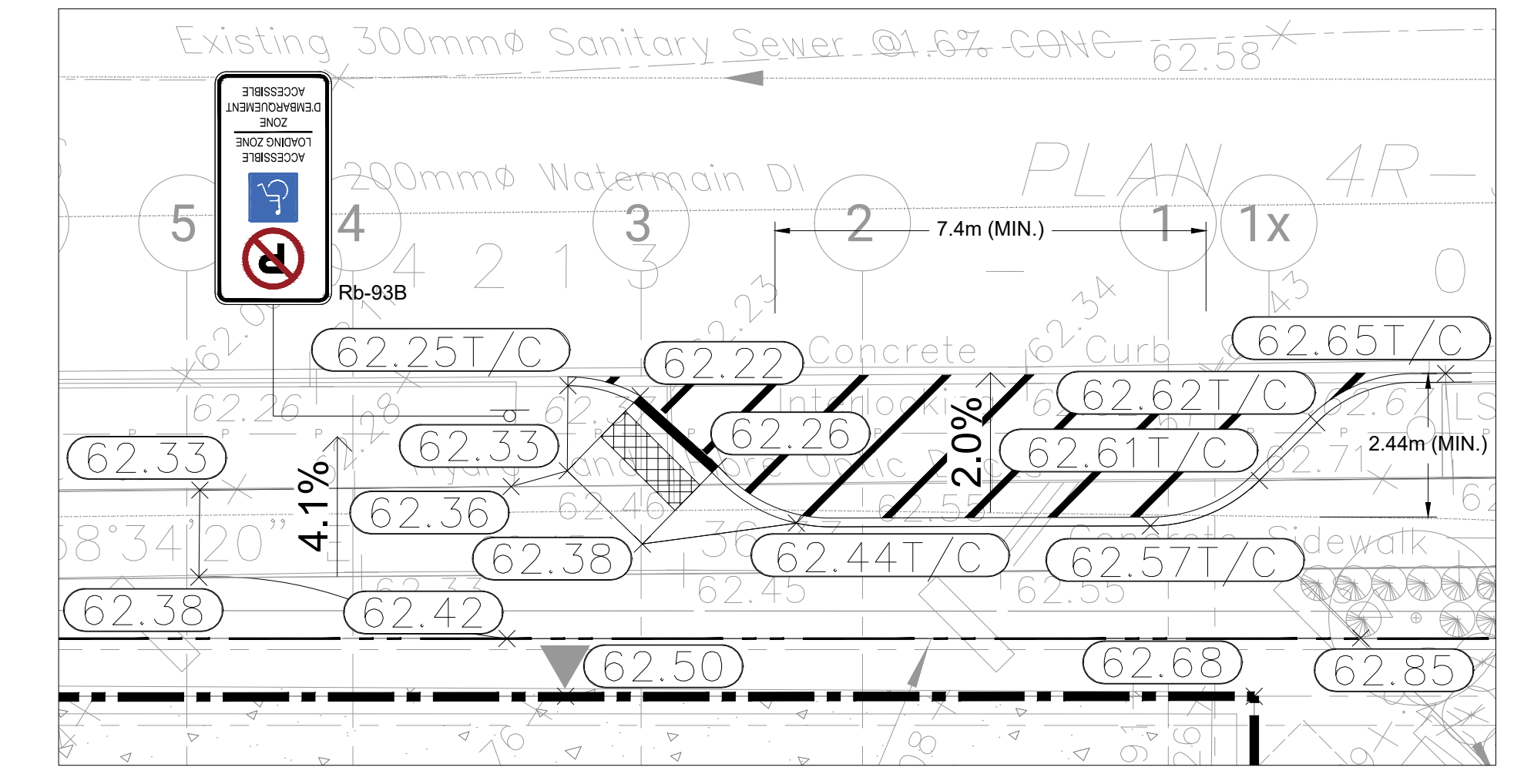
DESIGN EVENT	ICD TYPE	DIAMETER OF OUTLET PIPE (mm)	DESIGN FLOW (L/s)	WATER ELEVATION (m)	REQUIRED VOLUME (m³)	TOTAL VOLUME PROVIDED (m³)
1:5 YR	HYDROVEX 50VHV-2	250mmØ PVC	2.1	60.17	4.9	42
1:100 YR	HYDROVEX 50VHV-2	250mmØ PVC	3.0	61.32	9.1	42



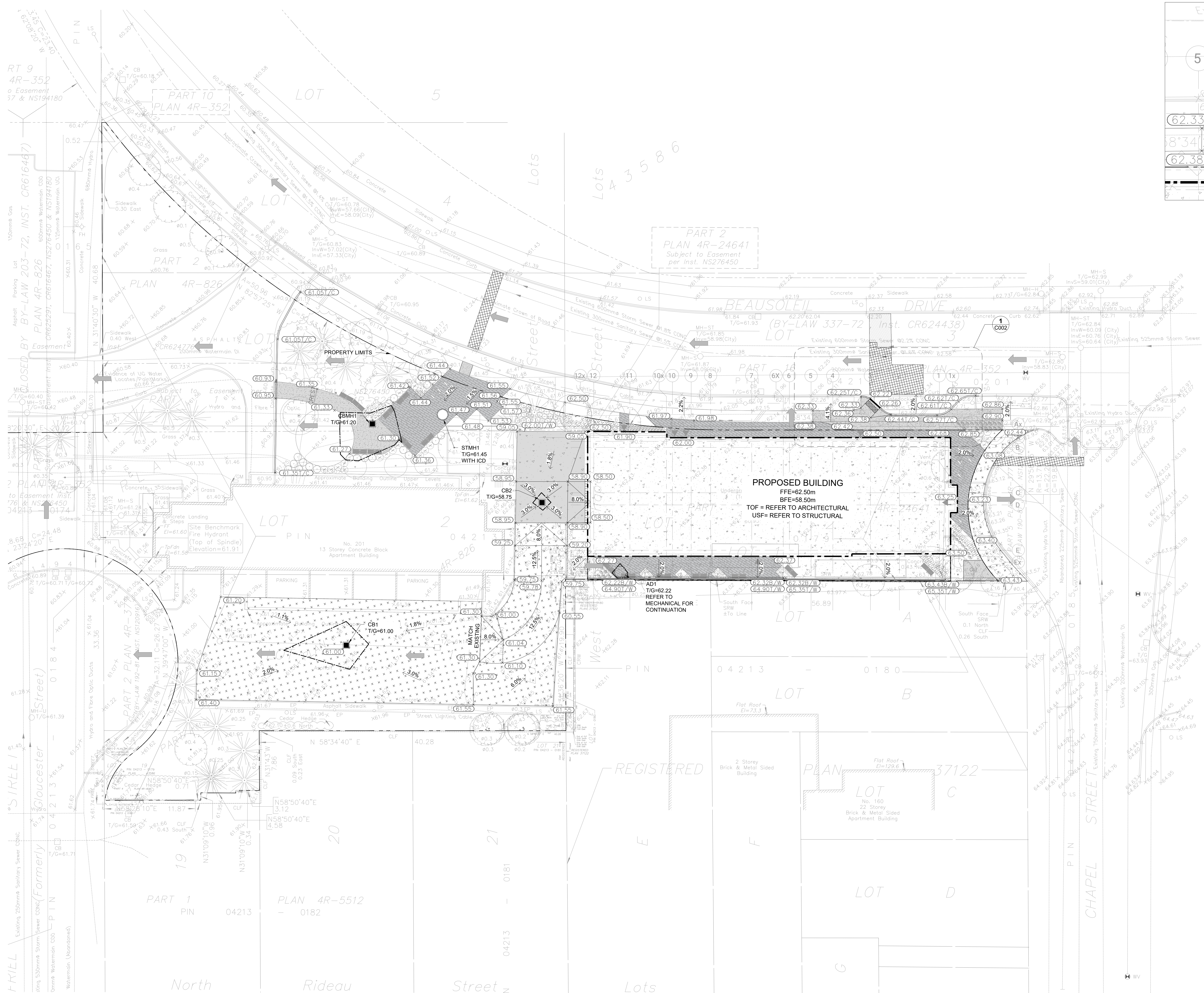


ISSUED

No.	Date	Description
0	2023 MAR 22	ISSUED FOR SITE PLAN APPROVAL
1	2023 MAY 12	ISSUED FOR 100% SCHEMATIC DESIGN
2	2023 MAY 18	ISSUED FOR REZONING AND SITE PLAN CONTROL - RESUBMISSION #1
3	2023 JUL 13	ISSUED FOR SITE PLAN CONTROL - RESUBMISSION #2
4	2023 AUG 25	ISSUED FOR 100% DESIGN DEVELOPMENT
5	2023 DEC 11	ISSUED FOR SITE PLAN CONTROL - RESUBMISSION



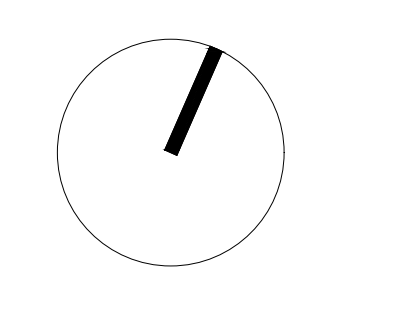
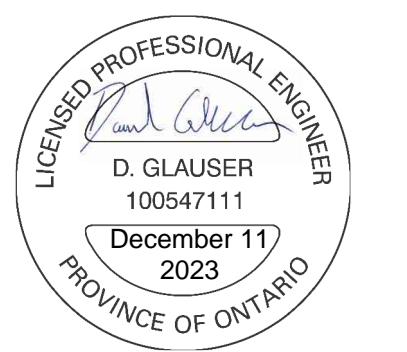
1 PASSENGER LOADING ZONE DETAIL
SCALE: 1:100



- NOTES:**
1. ALL ELEVATIONS ARE GEODETIC AND IN METERS UNLESS OTHERWISE NOTED.
 2. THIS DRAWING SHALL BE READ IN CONJUNCTION WITH ALL OTHER DRAWINGS.
 3. REFER TO ARCHITECTURAL AND LANDSCAPE DRAWINGS FOR LAYOUT, DIMENSIONS AND SURFACE FINISHES.
 4. ALL ELEVATIONS BY CURBS ARE EDGE OF PAVEMENT UNLESS OTHERWISE INDICATED.
 5. REINSTATE ALL DISTURBED/DAMAGED AREAS TO THEIR ORIGINAL CONDITION OR BETTER.
 6. PROVIDE POSITIVE DRAINAGE, MATCHING EXISTING OVERALL DRAINAGE PATTERN INDICATED.
 7. ALL WORK AND MATERIALS SHALL BE IN ACCORDANCE WITH CITY OF OTTAWA AND/OR ONTARIO PROVINCIAL STANDARDS.
 8. ALL TOPSOIL, ORGANIC OR DELETERIOUS MATERIAL MUST BE ENTIRELY REMOVED FROM BENEATH THE PROPOSED PAVED AREAS AS DIRECTED BY THE OWNER'S REPRESENTATIVE.
 9. SUBGRADE FOR THE PAVED AREAS SHALL BE PROOF ROLLED WITH A LARGE (10 TONNE MINIMUM) STEEL DRUM ROLLER UNDER DRY CONDITIONS. ANY SOFT AREAS EXPOSED FROM THE PROOF ROLLING SHOULD BE SUBEXCAVATED TO A DEPTH OF 500mm AND REPLACED WITH COMPACTED SUBGRADE FILL.
 10. ALL AREAS SHALL DRAIN AT A MINIMUM OF 1%. ANY DISCREPANCIES PREVENTING THIS SHALL BE REPORTED TO THE ENGINEER PRIOR TO CONTINUING WORK.
 11. BLEND NEW EARTHWORK INTO EXISTING, PROVIDING VERTICAL CURVES OR ROUNDING AT ALL TOP AND BOTTOM OF SLOPES.
 12. CONCRETE SIDEWALKS SHALL BE IN ACCORDANCE WITH CITY OF OTTAWA STANDARD DRAWING SC14 AND SC14 UNLESS SHOWN OTHERWISE.
 13. CONCRETE BARRIER CURBS SHALL BE IN ACCORDANCE WITH CITY OF OTTAWA STANDARD DRAWING SC11 UNLESS SHOWN OTHERWISE.
 14. SAW CUT AND KEY GRIND ASPHALT AT ALL THE INS PER CITY OF OTTAWA STANDARD R10.
 15. REINSTATE ANY LINE PAINTING DISTURBED BY THE WORK.
 16. REFER TO GEOTECHNICAL INVESTIGATION REPORT (AUG 2017 GEOTECH REPORT PG4129-1) PREPARED BY PATTERSON GROUP FOR SUBSURFACE CONDITIONS, CONSTRUCTION RECOMMENDATIONS AND GEOTECHNICAL INSPECTION REQUIREMENTS. THE GEOTECHNICAL CONSULTANT SHALL REVIEW EXCAVATIONS PRIOR TO THE PLACEMENT OF GRANULAR MATERIAL.

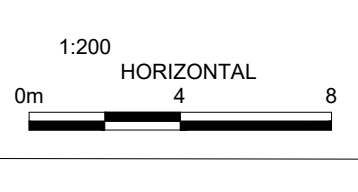
6. THE POSITION OF POLE LINES, CONDUITS, WATERMANS, SEWERS AND OTHER UNDERGROUND AND OVERGROUND UTILITIES AND STRUCTURES IS NOT NECESSARILY SHOWN ON THE CONTRACT DRAWING, AND, WHERE SHOWN, THE ACCURACY OF THE POSITION OF SUCH UTILITIES AND STRUCTURES IS NOT GUARANTEED. BEFORE STARTING WORK THE CONTRACTOR SHALL INFORM HIMSELF OF THE EXACT LOCATION OF ALL SUCH UTILITIES AND STRUCTURES, AND SHALL ASSUME ALL LIABILITY FOR DAMAGE TO THEM. THE CONTRACTOR WILL BE RESPONSIBLE FOR SUPPORTING AND PROTECTING ANY EXISTING UTILITIES, AS REQUIRED, IN ACCORDANCE WITH THE UTILITY OWNERS' REQUIREMENTS. CONTRACTOR IS REQUIRED TO OBTAIN LOCATES, IN ADVANCE OF EXCAVATION WORK, AND FORWARD COPIES OF THE LOCATES TO THE CONSULTANT AND THE OWNER PRIOR TO EXCAVATION. HAND EXCAVATION IS REQUIRED PER UTILITY OWNERS' REQUIREMENTS.
7. CONTRACTOR IS RESPONSIBLE TO KEEP THE ROADS FREE AND CLEAN FROM THE MUD OR DEBRIS.
8. SWALES MUST HAVE MINIMUM 1.5% LONGITUDINAL AND SIDE SLOPE AND MAX 3H:1V SIDE SLOPE (S29).
9. BENCHMARK NOTE:
TOPOGRAPHICAL SURVEY PREPARED BY FARLEY, SMITH & DENIS SURVEYING LTD. DATED SEPT 13, 2022. MTM ZONE 9, GEODETIC DATUM CGVD-1988-1979
SITE BENCHMARK: HYDRANT TOP OF SPINDLE ELEV. 61.91

- LEGEND**
- NEW AREA DRAIN
 - ⊙ PROPOSED MANHOLE
 - 62.55 PROPOSED ELEVATION
 - ⊗ 62.71/0 PROPOSED TOP OF CURB ELEVATION
 - ⊗ 62.75/0 PROPOSED TOP OF WALL ELEVATION
 - 2.0% PROPOSED SLOPE DIRECTION
 - ➔ MAJOR OVERLAND FLOW PATH
 - PAVERS - REFER TO LANDSCAPE
 - ⊗ LIGHT HEAVY DUTY ASPHALT PAVING
 - LIGHT DUTY CONCRETE
 - HEAVY DUTY CONCRETE
 - 40mm MILLING & REINSTATEMENT WITH HL3 OR SP12.5 ASPHALTIC CONCRETE
 - EXISTING ELEVATION
 - EXISTING MANHOLE
 - CONCRETE CURB AS PER SC 1.1
 - PONDING ELEVATION (MAX 110mm)
 - ▼ NEW ENTRANCE
 - ▼ ENTRANCE OF PARKING GARAGE ACCESS RAMP
 - PROPERTY LINE

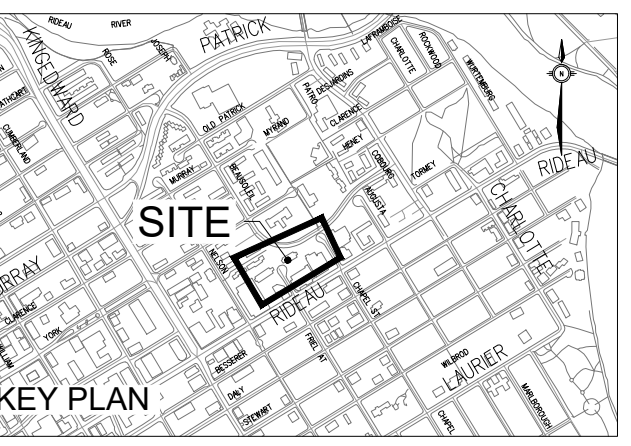


CONTRACTOR MUST CHECK & VERIFY ALL DIMENSIONS ON THE JOB.
SHOWN SCALE DRAWING.
ALL DRAWINGS, SPECIFICATIONS AND RELATED DOCUMENTS ARE THE COPYRIGHT PROPERTY OF THE ARCHITECT AND MUST BE RETURNED UPON REQUEST. REPRODUCTION OF DRAWINGS, SPECIFICATIONS AND RELATED DOCUMENTS IN PART OR IN WHOLE IS FORBIDDEN WITHOUT THE WRITTEN PERMISSION OF THE ARCHITECT.
THIS DRAWING IS NOT TO BE USED FOR CONSTRUCTION LABELS, SIGNED BY THE ARCHITECT.

OCH FRIEL STREET / CHAPEL
2002011 FRIEL STREET
221021



Scale: 1:200
Project No: 220822000
Date: 11/12/23

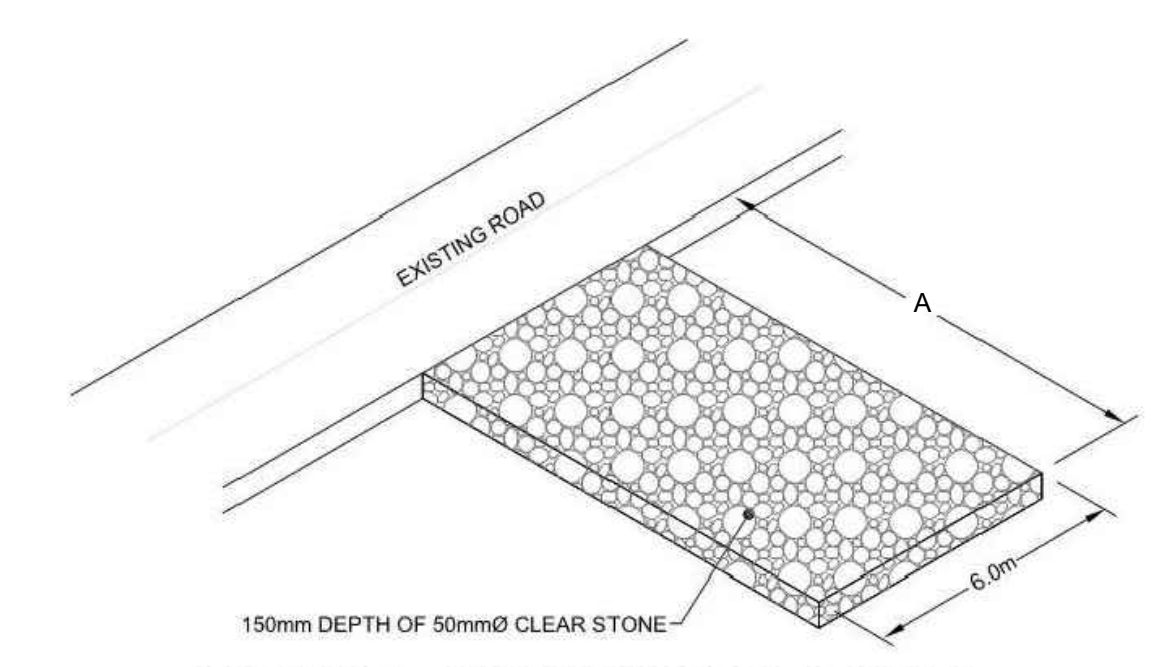


ISSUED

No.	Date	Description
0	2023 MAR 22	ISSUED FOR SITE PLAN APPROVAL
1	2023 MAY 12	ISSUED FOR 100% SCHEMATIC DESIGN
2	2023 MAY 18	ISSUED FOR REZONING AND SITE PLAN CONTROL - RESUBMISSION #1
3	2023 JUL 13	ISSUED FOR SITE PLAN CONTROL - RESUBMISSION #2
4	2023 AUG 25	ISSUED FOR 100% DESIGN DEVELOPMENT
5	2023 DEC 11	ISSUED FOR SITE PLAN CONTROL - RESUBMISSION

LEGEND

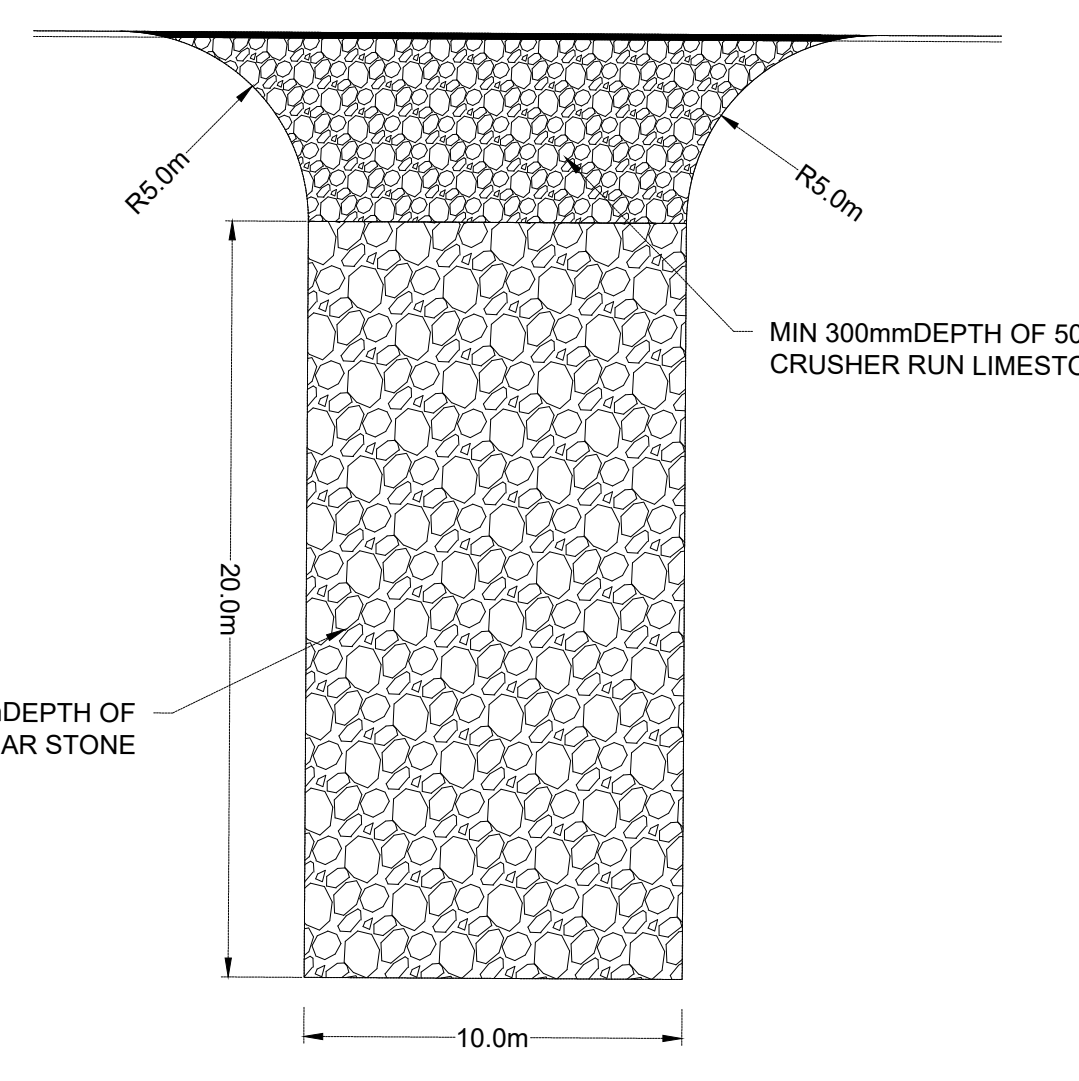
- LIGHT DUTY SILT FENCE BARRIER (PER OPSD 219.110)
- CATCH BASIN PROTECTION (SILT SACK WITHIN CB, OR SURROUND CB WITH SILT SOCK)
- SEDIMENT CAPTURE FILTER SOCK HELD IN PLACE USING SANDBAGS



MUD MAT - CONSTRUCTION ACCESS
N.T.S.

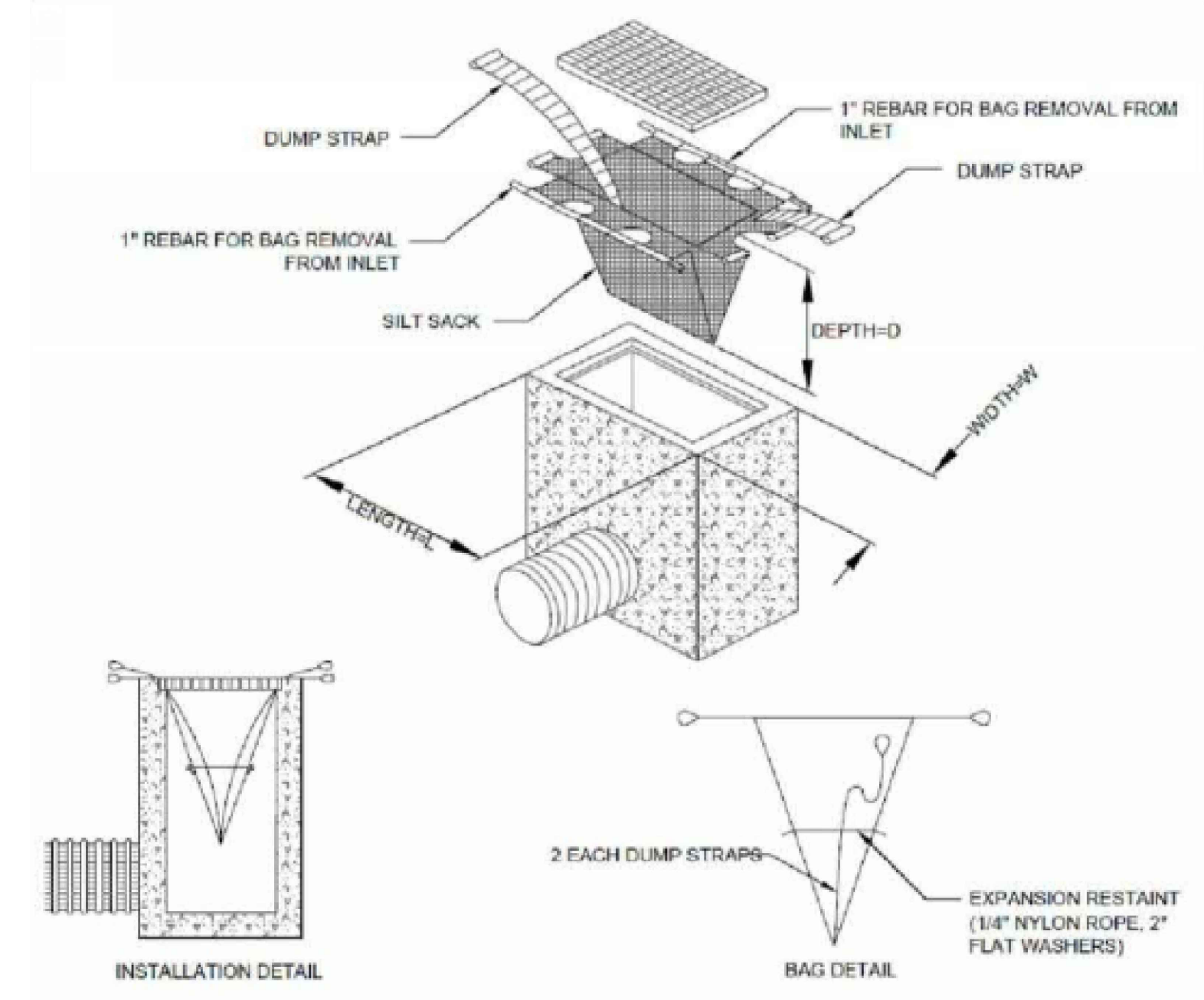
A - TO BE DETERMINED ON SITE IN CONJUNCTION WITH CONSTRUCTION MANAGER

TEMP. ASPHALT RAMP OR CURB CUT

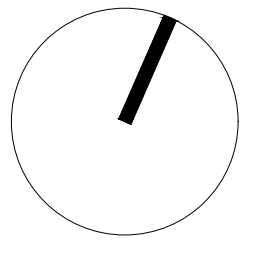
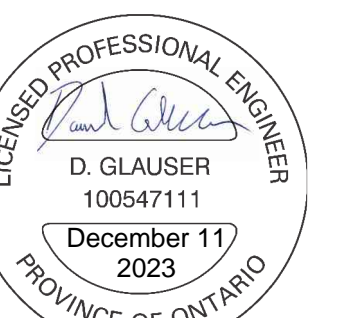


NOTES:

- INSTALL AT ALL SITE ACCESS LOCATIONS.
- TEMPORARY CONSTRUCTION ACCESS SHALL BE REMOVED ON COMPLETION OF THE WORK AND ALL DISTURBED AREAS SHALL BE RESTORED TO ORIGINAL OR BETTER CONDITION.



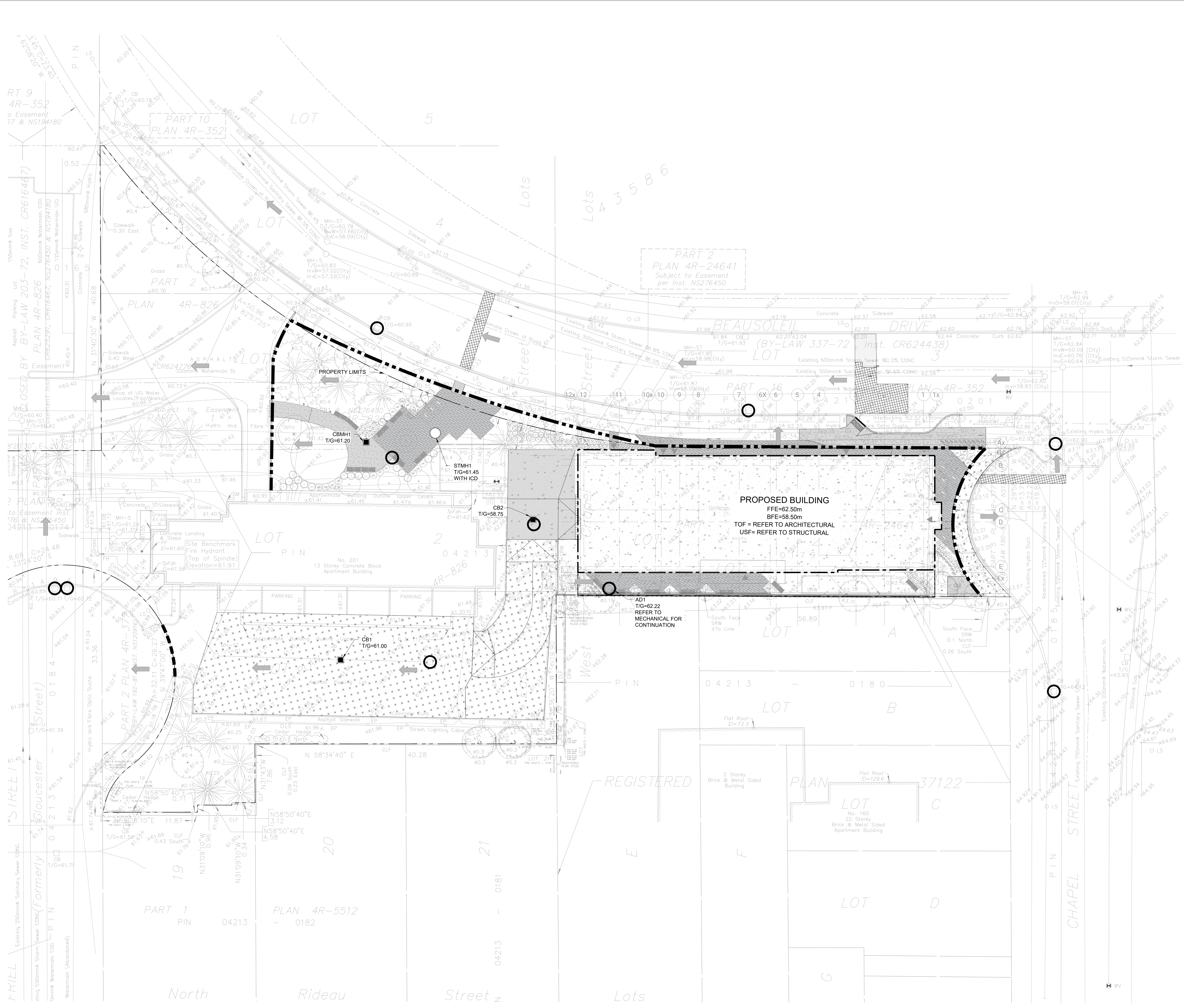
INLET SEDIMENT CONTROL DEVICE
N.T.S.



CONTRACTOR MUST CHECK & VERIFY ALL DIMENSIONS ON THE JOB. 50:40 SCALE DRAWING.
ALL DRAWINGS, SPECIFICATIONS AND RELATED DOCUMENTS ARE THE COPYRIGHT PROPERTY OF THE ARCHITECT AND MUST BE RETURNED UPON REQUEST. REPRODUCTION OF DRAWINGS, SPECIFICATIONS AND RELATED DOCUMENTS IN PART OR IN WHOLE IS FORBIDDEN WITHOUT THE WRITTEN PERMISSION OF THE ARCHITECT.
THIS DRAWING IS NOT TO BE USED FOR CONSTRUCTION UNLESS SIGNED BY THE ARCHITECT.

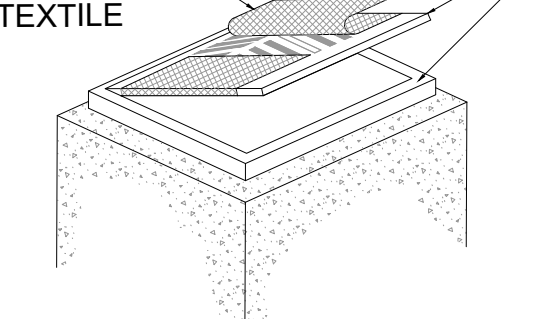
OCH FRIEL STREET / CHAPEL
200/201 FRIEL STREET
21021

EROSION & SEDIMENT CONTROL PLAN
Scale: 1:200
Project No: 230282300
Date: 11/12/23
C003
#18930

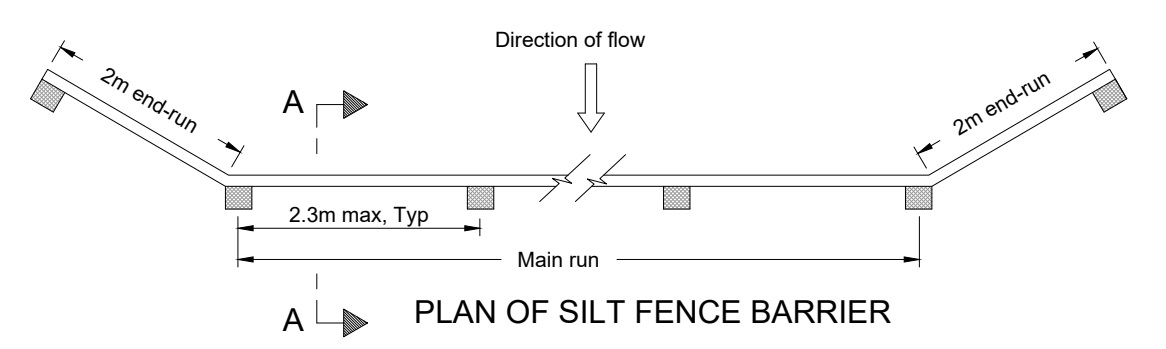


- EROSION AND SEDIMENT CONTROL**
- THE CONTRACTOR SHALL IMPLEMENT BEST MANAGEMENT PRACTICES, TO PROVIDE FOR PROTECTION OF THE AREA DRAINAGE SYSTEM AND THE RECEIVING WATER COURSE. DURING CONSTRUCTION ACTIVITIES THIS INCLUDES LIMITING THE AMOUNT OF EXPOSED SOIL, USING CATCH BASIN SEDIMENT PROTECTION AND INSTALLING SILT FENCES AND OTHER EFFECTIVE SEDIMENT TRAPS. THE CONTRACTOR ACKNOWLEDGES THAT FAILURE TO IMPLEMENT APPROPRIATE EROSION AND SEDIMENT CONTROL MEASURES MAY BE SUBJECT TO PENALTIES IMPOSED BY ANY APPLICABLE REGULATORY AGENCY.
 - EROSION AND SEDIMENT CONTROL MEASURES ARE TO BE IMPLEMENTED PRIOR TO CONSTRUCTION AND REMAIN IN PLACE UNTIL VEGETATION IS ESTABLISHED.
 - REGULAR INSPECTION AND MAINTENANCE OF THE EROSION AND SEDIMENT MEASURES SHALL BE UNDERTAKEN. THE IMPLEMENTATION AND ADJUSTMENT AND/OR CORRECTIVE MAINTENANCE OF THE EROSION AND SEDIMENT MEASURES IS AN INTEGRAL PART OF THE PLAN AND MUST BE PERFORMED.
 - CONTRACTOR IS RESPONSIBLE TO KEEP THE ROADS FREE AND CLEAN FROM MUD AND DEBRIS. AS A MINIMUM THIS SHALL INCLUDE SWEEPING LIBRARY ROAD DAILY DURING EXCAVATION WORK.
 - THE SEDIMENT AND EROSION CONTROL MEASURES MAY BE MODIFIED IN THE FIELD AT THE DISCRETION OF THE CITY OF OTTAWA SITE INSPECTOR OR CONSERVATION AUTHORITY.

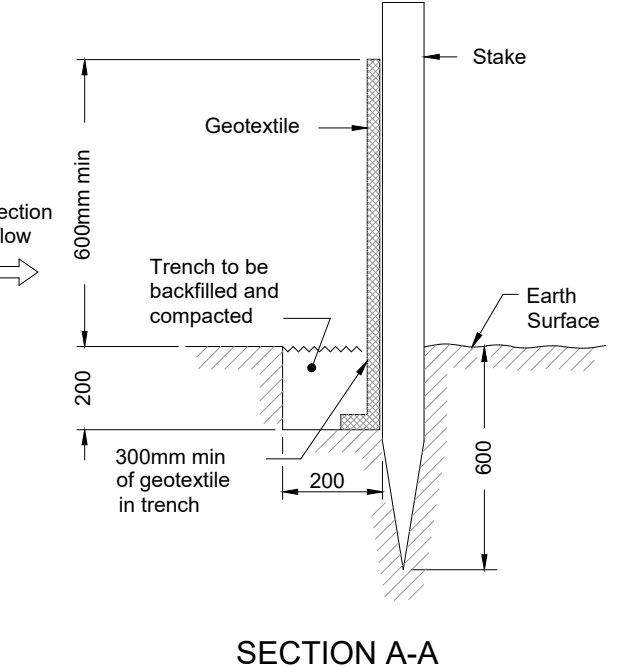
GRATE TO BE DOUBLE WRAPPED WITH WOVEN GEOTEXTILE



CATCH BASIN /MANHOLE PROTECTION DETAIL
N.T.S.



PLAN OF SILT FENCE BARRIER



SECTION A-A

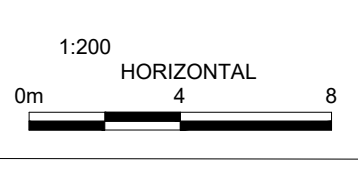
NOTES:

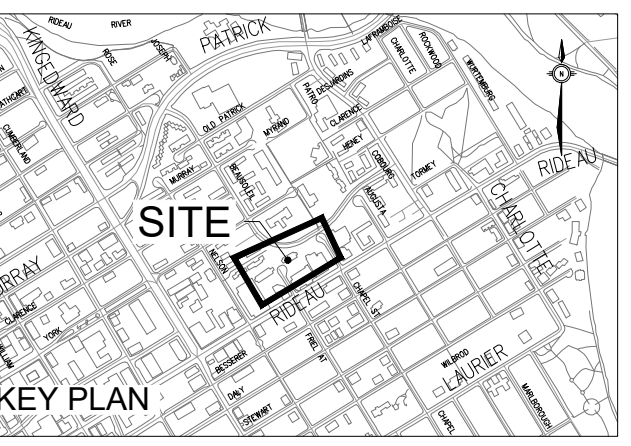
- TO BE USED UNDER APPROPRIATE DRAINAGE CIRCUMSTANCES, DURING THE CONSTRUCTION PERIOD.
- WOVEN GEOTEXTILE TO HAVE A MINIMUM EQUIVALENT OPENING SIZE OF 0.15mm AND A MAXIMUM EQUIVALENT OPENING SIZE OF 0.25mm.
- WOVEN GEOTEXTILE TO BE REPLACED PERIODICALLY WHEN ACCUMULATED SEDIMENTS INTERFERE WITH DRAINAGE.
- ALL DIMENSIONS ARE IN MILLIMETERS UNLESS OTHERWISE SHOWN.

NOTES:

- WOVEN GEOTEXTILE TO HAVE A MINIMUM EQUIVALENT OPENING SIZE OF 0.15mm AND A MAXIMUM EQUIVALENT OPENING SIZE OF 0.25mm.
- WOVEN GEOTEXTILE TO HAVE A HORIZONTAL OVERLAP OF 100mm AT JOINTS.
- ALL DIMENSIONS ARE IN MILLIMETERS UNLESS OTHERWISE SHOWN.

LIGHT DUTY SILT FENCE BARRIER
AS PER OPSD 219.110
N.T.S.

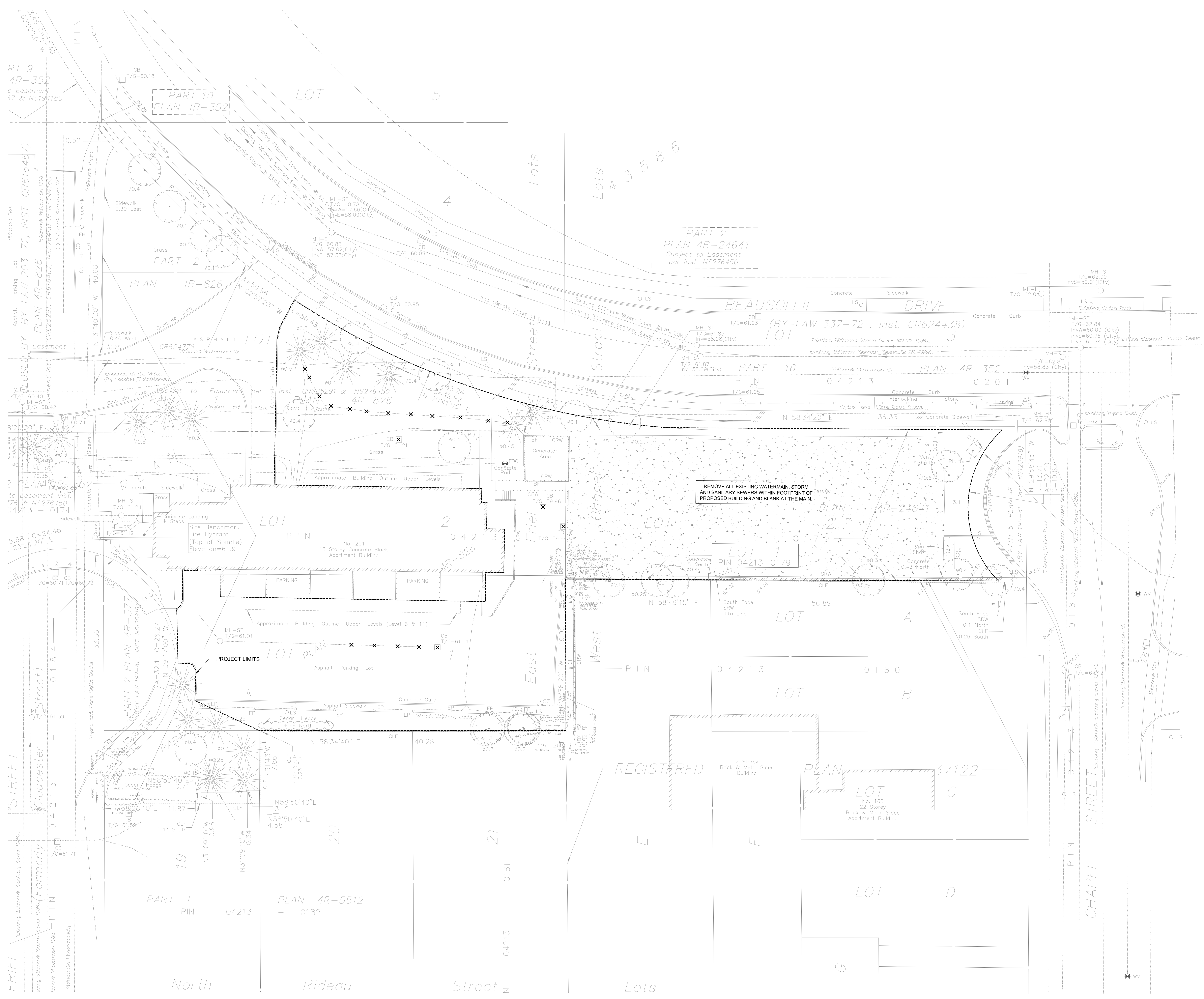




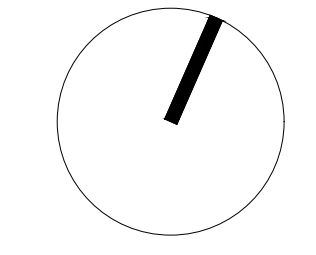
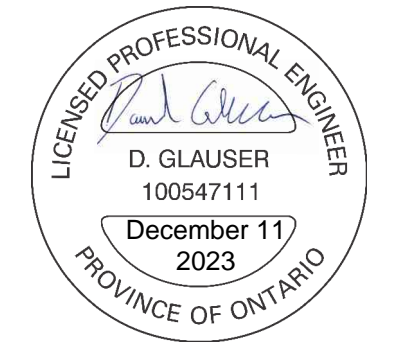
LEGEND
X X X EXISTING WATERMAIN OR SEWER VALVE CHAMBER, MAINTENANCE HOLE OR CATCH BASIN TO BE REMOVED OR ABANDONED (REMOVE IF WITH EXCAVATION LIMITS)

ISSUED

No.	Date	Description
0	2023 MAR 22	ISSUED FOR SITE PLAN APPROVAL
1	2023 MAY 12	ISSUED FOR 100% SCHEMATIC DESIGN
2	2023 MAY 18	ISSUED FOR REZONING AND SITE PLAN CONTROL - RESUBMISSION #1
3	2023 JUL 13	ISSUED FOR SITE PLAN CONTROL - RESUBMISSION #2
4	2023 AUG 25	ISSUED FOR 100% DESIGN DEVELOPMENT
5	2023 DEC 11	ISSUED FOR SITE PLAN CONTROL - RESUBMISSION



NOTES:
1. COMPLETE ALL REMOVALS AND ABANDONMENTS IN ACCORDANCE WITH OPSS MUNI. 510.



CONTRACTOR MUST CHECK AND VERIFY ALL DIMENSIONS ON THE JOB. 50/40 SCALE DRAWING.
ALL DRAWINGS, SPECIFICATIONS AND RELATED DOCUMENTS ARE THE COPYRIGHT PROPERTY OF THE ARCHITECT AND MUST BE RETURNED UPON REQUEST. REPRODUCTION OF DRAWINGS, SPECIFICATIONS AND RELATED DOCUMENTS IN PART OR IN WHOLE IS FORBIDDEN WITHOUT THE WRITTEN PERMISSION OF THE ARCHITECT.
THIS DRAWING IS NOT TO BE USED FOR CONSTRUCTION UNLESS SIGNED BY THE ARCHITECT.

OCH FRIEL STREET / CHAPEL
200201 FRIEL STREET
221021

Scale: 1:200
Project No: 220282000
Date: 11/12/23

REMOVALS PLAN
#18930
C700