

Site Plan Developed Based On Site Survey By Farley, Smith & Densi Surveying LTD.:
 Site Area: 7235.9m²
 LOTS 1 AND 2 (West Friel Street), PART OF LOT 19 (North Rideau Street) PART OF LOTS 1, 2, 3 AND 4 (East Friel Street), PART OF LOTS 1, 2 AND 3 (West Chapel Street) PART OF FRIEL STREET (As Closed by By-Law 203-72, Inst. CR616467) REGISTERED PLAN 43586 CITY OF OTTAWA

Architect
Diamond Schmitt Architects
 384 Adelaide Street West, Suite 100
 Toronto, ON M5V 1R7
 T: (416)-862-8800

Architect
KWC Architects Inc.
 383 Parkdale Avenue, Suite 201
 Ottawa, ON K1Y 4R4
 T: (613)-238-2117

Planner
WSP
 2611 Queensview Drive #300
 Ottawa, ON K2B 8K2
 T: (613)-829-2800

Civil
Morrison Hershfield
 2932 Baseline Road
 Ottawa, ON K2H 1B1
 T: (613)-739-2910

Electrical
Smith + Andersen
 1600 Carling Avenue #530
 Ottawa, ON K1Z 1G3
 T: (613)-230-1186

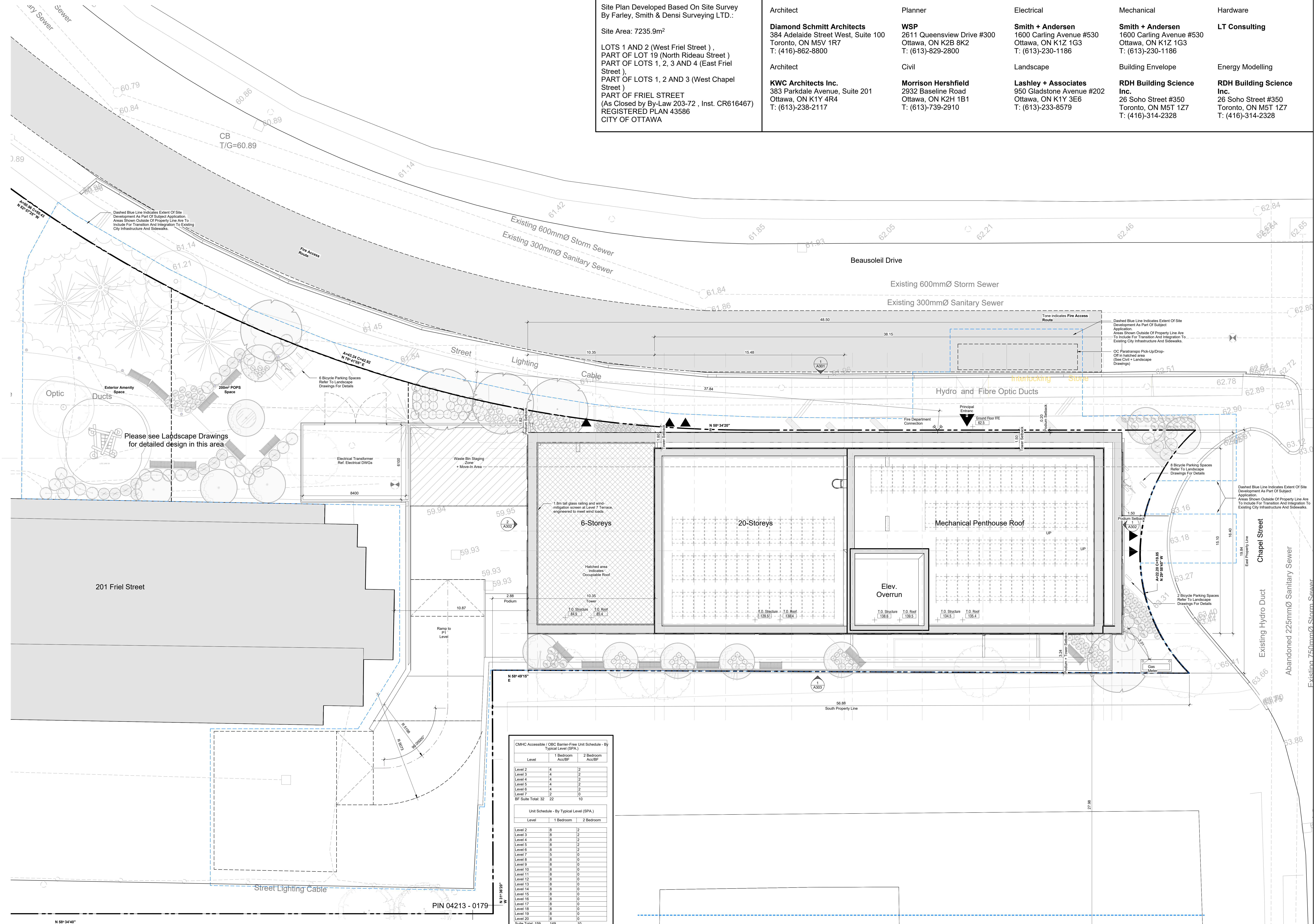
Landscape
Lashley + Associates
 950 Gladstone Avenue #202
 Ottawa, ON K1Y 3E6
 T: (613)-233-8579

Mechanical
Smith + Andersen
 1600 Carling Avenue #530
 Ottawa, ON K1Z 1G3
 T: (613)-230-1186

Building Envelope
RDH Building Science Inc.
 26 Soho Street #350
 Toronto, ON M5T 1Z7
 T: (416)-314-2328

Hardware
LT Consulting

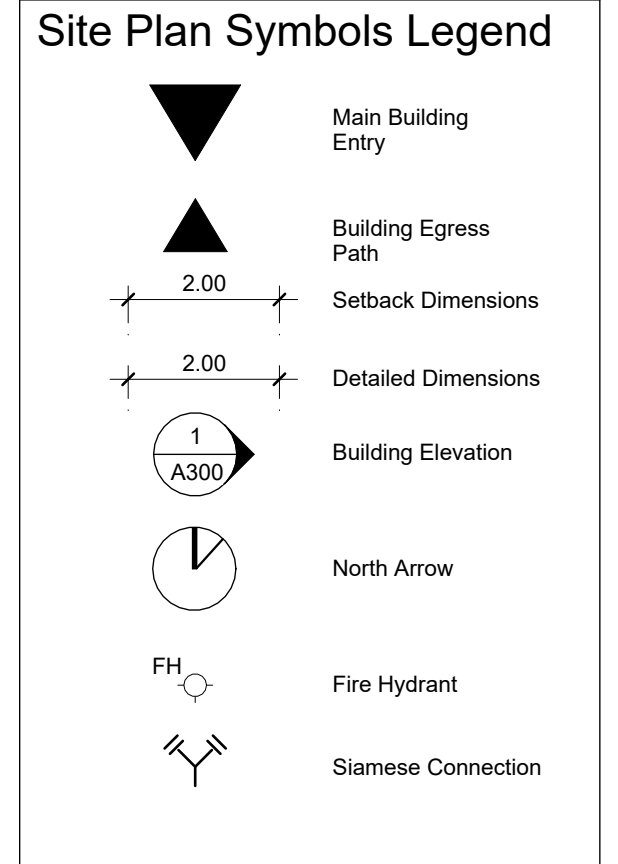
Energy Modelling
RDH Building Science Inc.
 26 Soho Street #350
 Toronto, ON M5T 1Z7
 T: (416)-314-2328



Issue No.	Date	Description
1	22 MAR 2023	Issued for Rezoning and Site Plan Control
3	18 MAY 2023	Issued for Rezoning and Site Plan Control - Resubmission #1
5	13 JUL 2023	Issued for Site Plan Control - Resubmission #2

Please see Landscape Drawings for detailed design in this area

Dashed Blue Line Indicates Extent Of Site Development As Part Of Subject Application. Areas Shown Outside Of Property Line Are To Include For Transition And Integration To Existing City Infrastructure And Sidewalks.



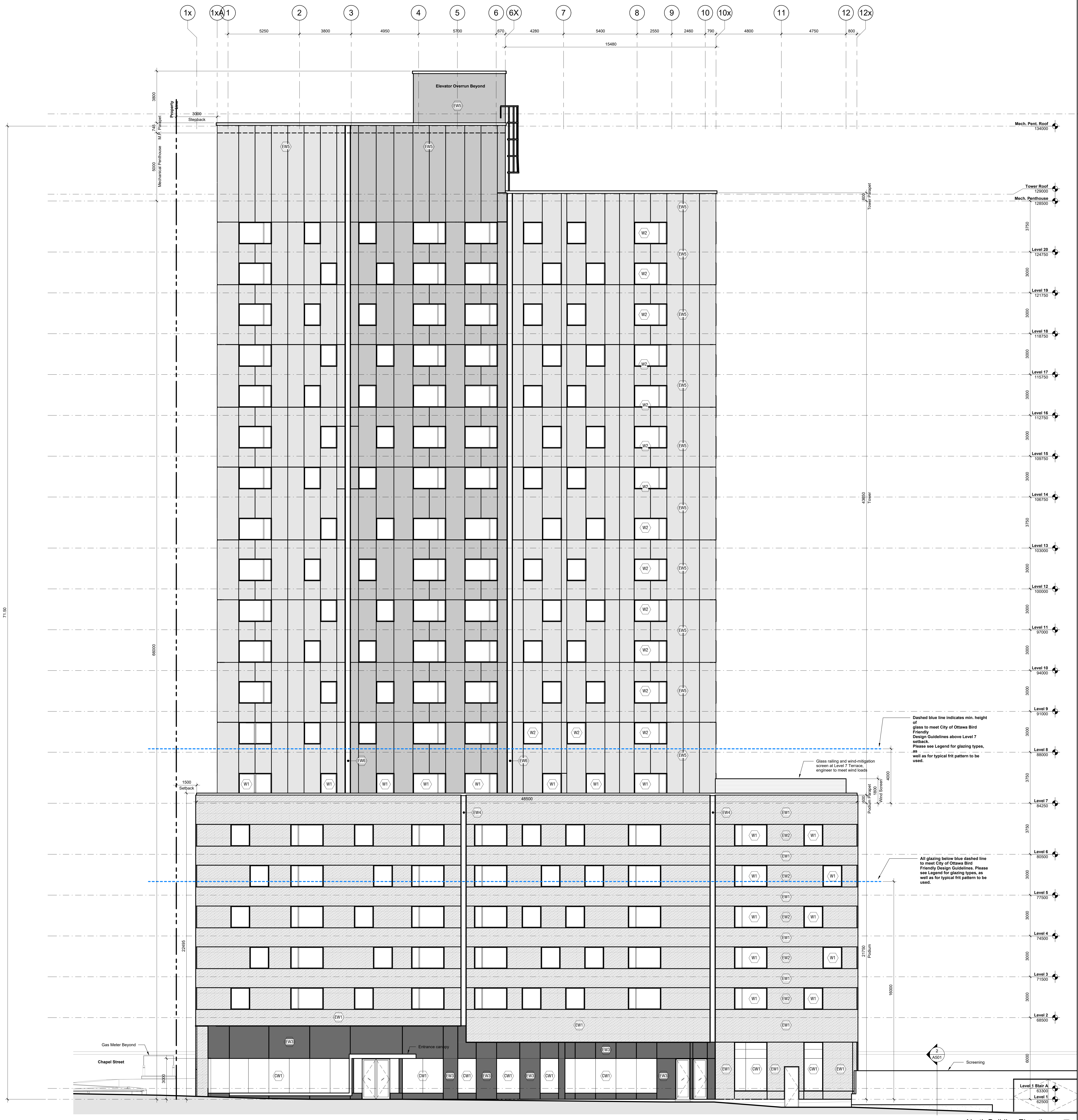
NOT FOR CONSTRUCTION



Contractor Must Check & Verify all Dimensions on the Job.
 Do Not Scale Drawings.
 All Drawings, Specifications and Related Documents are the Copyright Property of the Architect and Must be Retained Under License. Reproduction or Change of any Part of the Drawings and Related Documents is Prohibited Without the Written Permission of the Architect.
 This Drawing is Not to be Used for Construction Until Signed by the Architect.

OCH Friel Street / Chapel
 200-201 Friel Street (200 Beausoleil), Ottawa, ON K1Z 1G3
 2/21/21

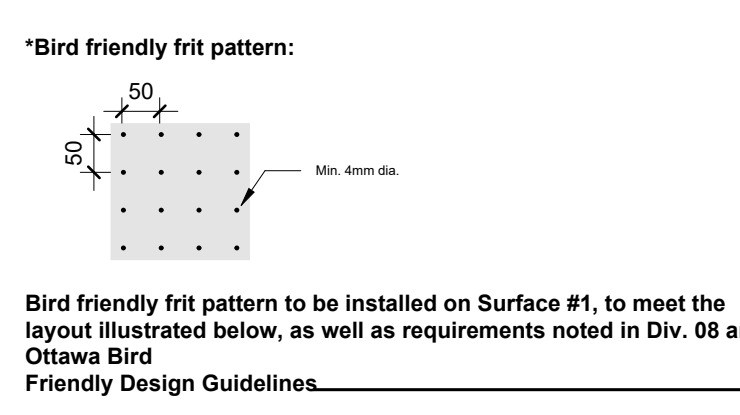
Level	Gross Floor Area (m ²)	Gross Floor Area (ft ²)	Level	Name	AR_AreaType_KSI	Area	Level	Area (m ²)	Area (ft ²)
Level P1	100.51 m ²	1081.50 ft ²	Level 1	Outdoor Seating Area	Amenity Exterior	116.99 m ²	Level P1	229.38 m ²	2468.98 ft ²
Level 1	204.72 m ²	2203.62 ft ²	Level 1	East Garden	Amenity Exterior	31.41 m ²	Level 1	3.44 m ²	37.07 ft ²
Level 2	690.19 m ²	7426.11 ft ²	Level 1	Private Garden	Amenity Exterior	32.18 m ²	Level 2	4.36 m ²	46.97 ft ²
Level 3	690.19 m ²	7426.11 ft ²	Level 1	Children's Play	Amenity Exterior	245.29 m ²	Level 7	42.20 m ²	454.22 ft ²
Level 4	690.19 m ²	7426.11 ft ²	Level 1	Games Lounge	Amenity Interior	72.48 m ²	Level 8	7.15 m ²	76.48 ft ²
Level 5	690.19 m ²	7426.11 ft ²	Level 1	Library	Amenity Interior	28.20 m ²	Level 9	3.50 m ²	37.54 ft ²
Level 6	690.19 m ²	7426.11 ft ²	Level 1	Private Seating	Amenity Interior	97.76 m ²	Level 10	3.50 m ²	37.54 ft ²
Level 7	354.08 m ²	3816.92 ft ²	Level 1	Arts + Activities	Amenity Interior	117.17 m ²	Level 11	3.50 m ²	37.54 ft ²
Level 8	456.89 m ²	4917.97 ft ²	Level 1	WiFi	Amenity Interior	40.51 m ²	Level 12	3.50 m ²	37.54 ft ²
Level 9	456.89 m ²	4917.97 ft ²	Level 1	Wellness	Amenity Interior	50.90 m ²	Level 13	3.50 m ²	37.54 ft ²
Level 10	456.89 m ²	4917.97 ft ²	Level 1	Bookable	Amenity Interior	29.11 m ²	Level 14	3.50 m ²	37.54 ft ²
Level 11	456.89 m ²	4917.97 ft ²	Level 7	Resident Terrace	Amenity Exterior	141.19 m ²	Level 15	3.50 m ²	37.54 ft ²
Level 12	456.89 m ²	4917.97 ft ²	Level 7	Quiet Seating	Amenity Interior	48.46 m ²	Level 16	3.50 m ²	37.54 ft ²
Level 13	456.89 m ²	4917.97 ft ²	Grand total:			1011.17 m ²	Level 17	3.50 m ²	37.54 ft ²
Level 14	456.89 m ²	4917.97 ft ²					Level 18	3.50 m ²	37.54 ft ²
Level 15	456.89 m ²	4917.97 ft ²					Level 19	3.50 m ²	37.54 ft ²
Level 16	456.89 m ²	4917.97 ft ²					Level 20	3.50 m ²	37.54 ft ²
Level 17	456.89 m ²	4917.97 ft ²					Mech. Penthouse	255.08 m ²	2745.71 ft ²
Level 18	456.89 m ²	4917.97 ft ²					Grand total:	581.08 m ²	6260.09 ft ²
Level 19	456.89 m ²	4917.97 ft ²							
Level 20	456.89 m ²	4917.97 ft ²							
Mech. Penthouse	255.08 m ²	2745.71 ft ²							
Level 21	10096.11 m ²	108705.87 ft ²							



Issue

No.	Date	Description
1	22 MAR 2023	Issued for Rezoning and Site Plan Control
3	18 MAY 2023	Issued for Rezoning and Site Plan Control - Resubmission #1
5	13 JUL 2023	Issued for Site Plan Control - Resubmission #2

- Legend - Cladding Materials
- (EW1) Exterior Wall Type 1 - Masonry Cladding
 - (EW2) Exterior Wall Type 2 - Masonry/Precast Cladding
 - (EW3) Exterior Wall Type 3 - Sintered Stone Cladding
 - (EW4) Exterior Wall Type 4 - Coloured Masonry Cladding
 - (EW5) Exterior Wall Type 5 - Metal Panel Cladding
 - (EW6) Exterior Wall Type 6 - Coloured Metal Panel Cladding
 - (CW1) Curtain Wall Type 1 - Triple Glazed Curtain Wall Bird-Friendly Fit on Surface #1 to meet Ottawa Bird Friendly Design Guidelines*
 - (W1) Punched Window Type 1 - Triple Glazed Fibreglass Window Bird-Friendly Fit on Surface #1 to meet Ottawa Bird Friendly Design Guidelines*
 - (W2) Punched Window Type 2 - Triple Glazed Fibreglass Window Clear glazing without fit



Contractor Must Check & Verify all Dimensions on the Job.
Do Not Scale Drawings.
All Drawings, Specifications and Related Documents are the Copyright Property of the Architect and Must be Returned Upon Request. Reproduction or Circulation of any Drawings and Related Documents is Prohibited Without the Written permission of the Architect.
This Drawing is Not to be Used for Construction Until Signed by the Architect.

OCH Friel Street / Chapel
200-201 Friel Street (200 Beausoleil), Ottawa, ON K1P 2T1

2023-07-14 11:57:04 AM Autodesk Docs://22-102-COCH-Frie-Street/2023/10/14/2023-07-14/2023-07-14-11-57-04-AM.dwg

