

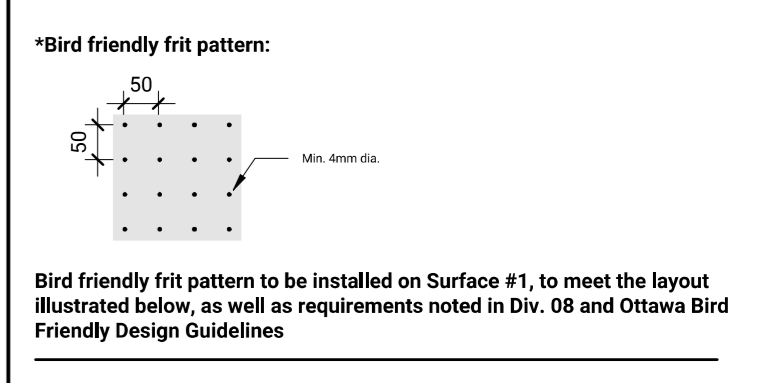
Andrew McCreight
ANDREW MCCREIGHT
 MANAGER (A), DEVELOPMENT REVIEW CENTRAL
 PLANNING, REAL ESTATE & ECONOMIC DEVELOPMENT
 DEPARTMENT, CITY OF OTTAWA

APPROVED
 By Andrew McCreight at 4:14 pm, Dec 21, 2023

Issues

No.	Date	Description
1	02 MAR 2023	Issued for Rezoning and Site Plan Control
2	18 MAY 2023	Issued for Rezoning and Site Plan Control - Resubmission #1
3	13 JUL 2023	Issued for Site Plan Control - Resubmission #2
4	25 AUG 2023	Issued for 100% Design Development
5	18 SEP 2023	Issued for Site Plan Control - Resubmission

- Legend - Cladding Materials**
- (EW1) Exterior Wall Type 1 - Masonry Cladding
 - (EW2) Exterior Wall Type 2 - Sintered Stone Cladding
 - (EW3) Exterior Wall Type 3 - Metal Panel Cladding
 - (EW4) Exterior Wall Type 4 - Triple Glazed Fibreglass Window
 - (EW5) Exterior Wall Type 5 - Metal Panel Cladding
 - (CW1) Curtain Wall Type 1 - Triple Glazed Fibreglass Window
 - (CW2) Curtain Wall Type 2 - Triple Glazed Fibreglass Window
 - (CW3) Curtain Wall Type 3 - Triple Glazed Fibreglass Window
- Wind mitigation screening at Level 7 roof terrace to meet City of Ottawa Bird Friendly Design Guidelines. Please see Legend for glazing types, as well as for typical fit pattern to be used.**
- Glass railing and wind-mitigation screen at Level 7 Terrace, engineer to meet wind loads.**



NOT FOR CONSTRUCTION



Contractor Must Check & Verify all Dimensions on the Job.
 Do Not Scale Drawings.
 All Drawings, Specifications and Related Documents are the Copyright Property of the Architect and shall be returned upon Request. Reproduction of Drawings, Specifications and Related Documents in Part or in whole is forbidden without the written permission of the Architect.
 This Drawing is Not to be Used for Construction until Signed by the Architect.

OCH Friel Street / Chapel
 200-201 Friel Street (200 Beauséjour), Ottawa, ON K1R 7Y1
 221021

North Exterior Building Elevation
 As Indicated
A301
 1/100

Autodesk/2023/03/22/10:00:00/1/Friel Street/200-201/001/Architectural/Building/2522.MXD
 2023-09-15 13:53:27 PM

Issue

No.	Date	Description
1	22 MAR 2023	Issued for Rezoning and Site Plan Control
2	18 MAY 2023	Issued for Rezoning and Site Plan Control - Resubmission #1
3	13 JUL 2023	Issued for Site Plan Control - Resubmission #2
4	25 AUG 2023	Issued for 100% Design Development
5	18 SEP 2023	Issued for Site Plan Control - Resubmission

- Legend - Cladding Materials**
- (EW1) Exterior Wall Type 1 - Masonry Cladding
 - (EW2) Exterior Wall Type 2 - Sintered Stone Cladding
 - (EW3) Exterior Wall Type 3 - Metal Panel Cladding
 - (CW1) Curtain Wall Type 1 - Triple Glazed Curtain Wall Bird-friendly Frit on Surface #1 to meet Ottawa Bird Friendly Design Guidelines*
 - (W1) Punched Window Type 1 - Triple Glazed Fiberglass Window Clear glazing without frit.
 - (W1-F) W1-F to contain bird-friendly Frit on Surface #1 to meet Ottawa Bird Friendly Design Guidelines*
 - (W2) Punched Window Type 2 - Triple Glazed Fiberglass Window Clear glazing without frit.
 - (W3) Punched Window Type 3 - Triple Glazed Fiberglass Window Clear glazing without frit.
- *Bird friendly frit pattern:**
-
- Bird friendly frit pattern to be installed on Surface #1, to meet the layout illustrated below, as well as requirements noted in Div. 08 and Ottawa Bird Friendly Design Guidelines

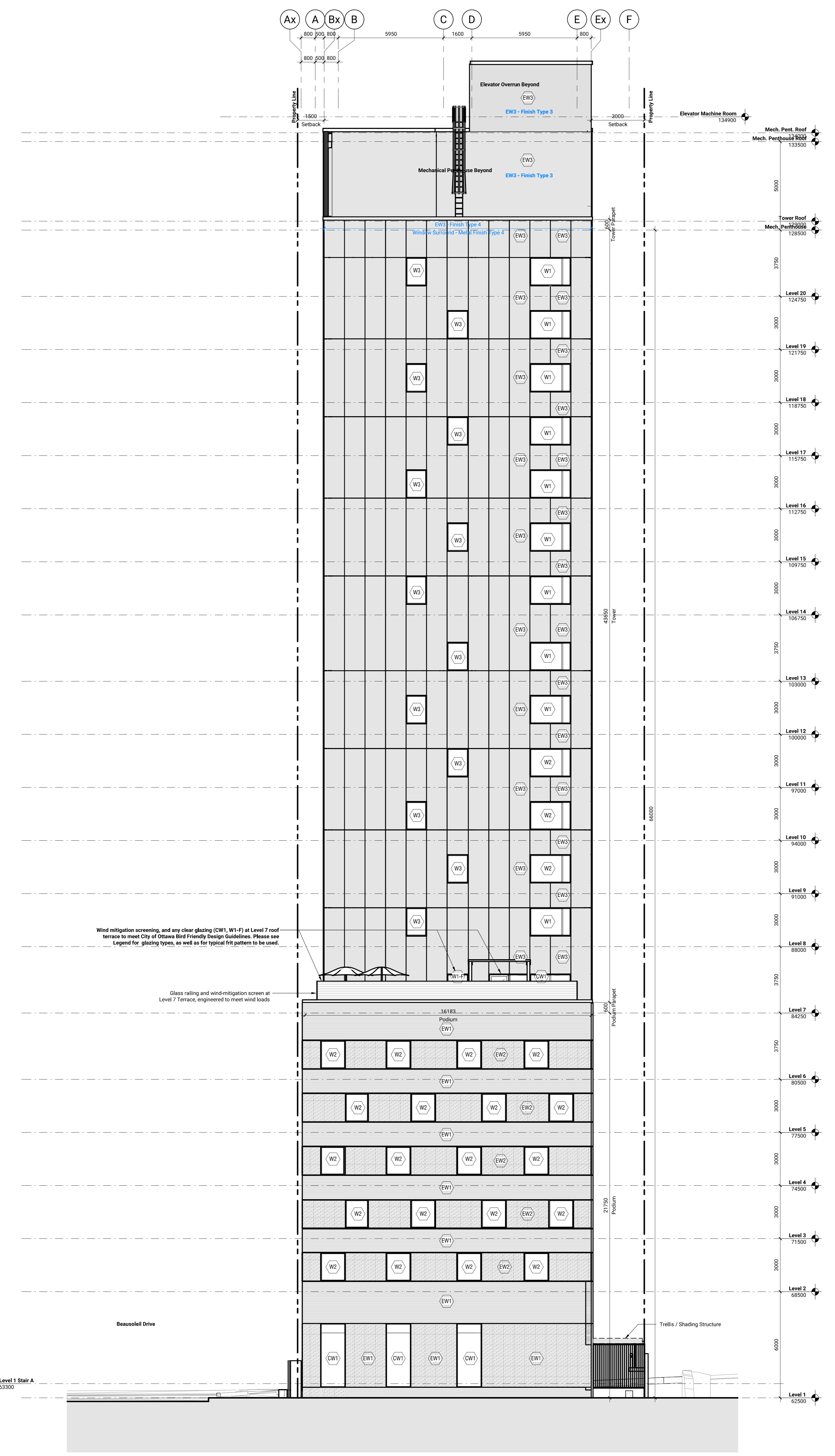
NOT FOR CONSTRUCTION



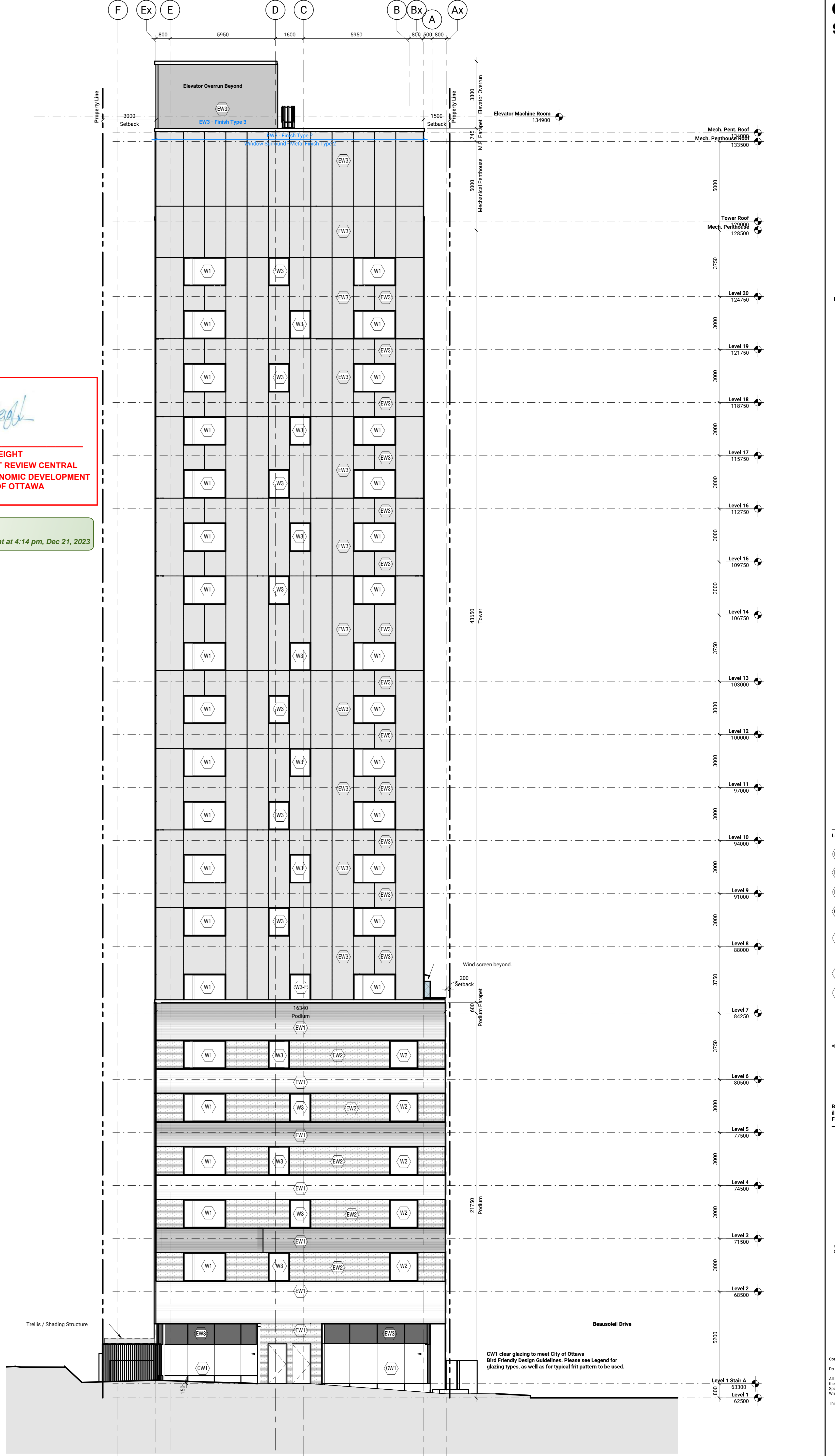
Contractor Must Check & Verify all Dimensions on the Job.
Do Not Scale Drawings.
All Drawings, Specifications and Related Documents are the Copyright Property of the Architect and shall be retained upon issuance. Reproduction of Drawings, Specifications and Related Documents in Part or in whole is forbidden without the written permission of the Architect.
This Drawing is Not to be Used for Construction Until Signed by the Architect.

OCH Friel Street / Chapel
200-201 Friel Street (201 Beauséjour), Ottawa, ON K1R 7L1
221021

East and West Exterior Building Elevations
As indicated
A302
D07-12-23-0034 (SPC)



West Building Elevation
1:100

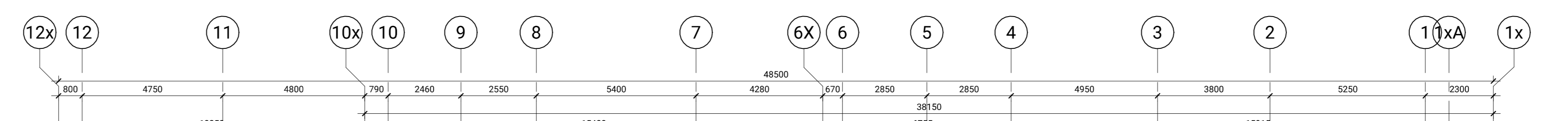


East Building Elevation
1:100

ANDREW MCCREIGHT
 MANAGER (A), DEVELOPMENT REVIEW CENTRAL
 PLANNING, REAL ESTATE & ECONOMIC DEVELOPMENT
 DEPARTMENT, CITY OF OTTAWA

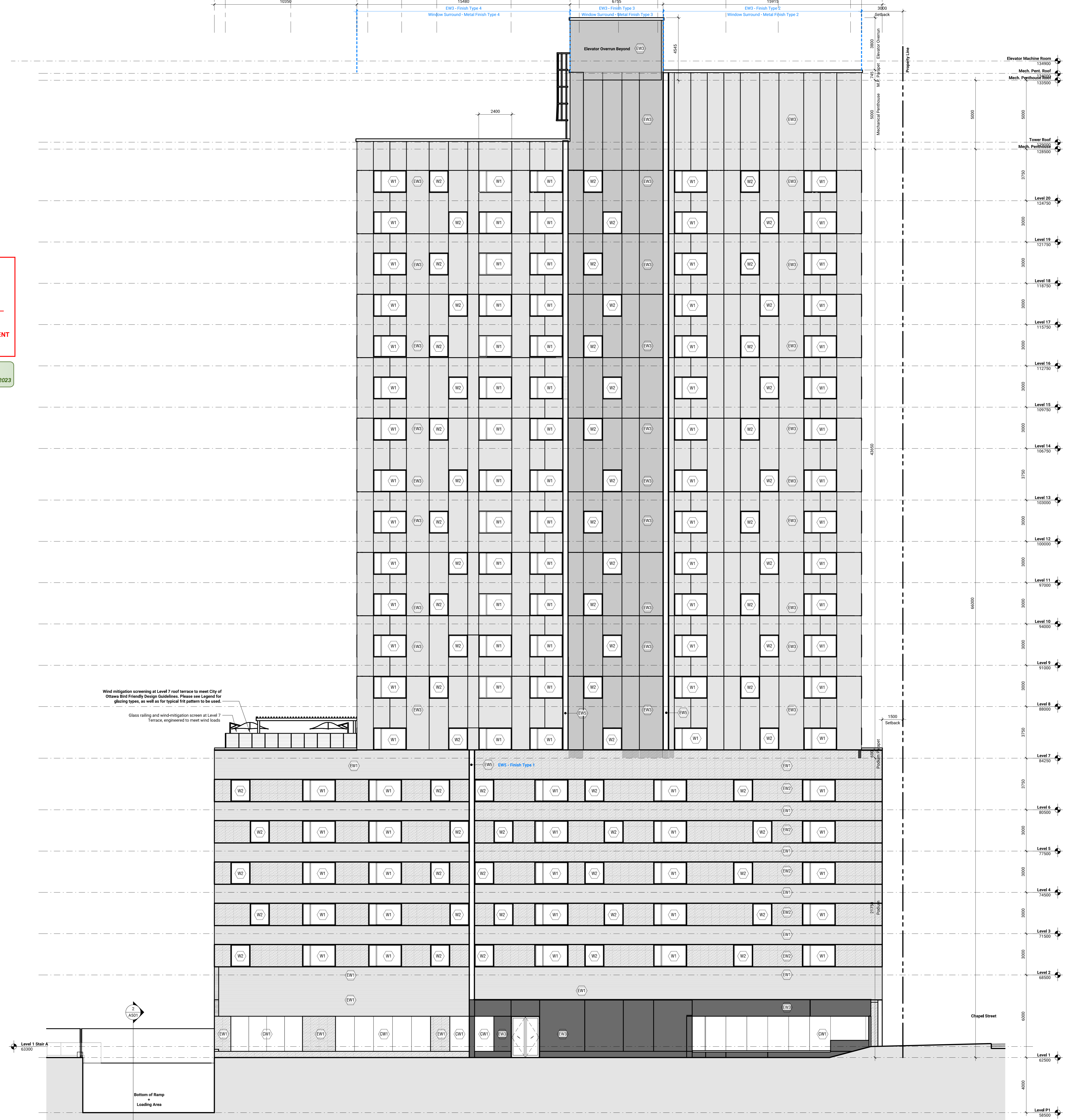
APPROVED
 By Andrew McCreight at 4:14 pm, Dec 21, 2023

2023-09-15 15:56:33 PM
 Autodesk/Docu/221021-0034-Friel-Street-Building-2023-09-15 15:56:33 PM



Andrew McCreight
ANDREW MCCREIGHT
 MANAGER (A), DEVELOPMENT REVIEW CENTRAL
 PLANNING, REAL ESTATE & ECONOMIC DEVELOPMENT
 DEPARTMENT, CITY OF OTTAWA

APPROVED
 By Andrew McCreight at 4:19 pm, Dec 21, 2023

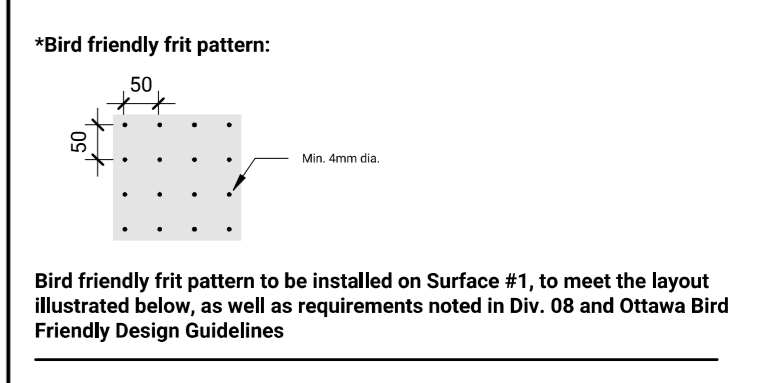


Wind mitigation screening at Level 7 roof terrace to meet City of Ottawa Bird Friendly Design Guidelines. Please see Legend for glazing types, as well as for typical frit pattern to be used.
 Glass railing and wind-mitigation screen at Level 7 Terrace, engineered to meet wind loads

Issues

No.	Date	Description
1	27 MAR 2023	Issued for Rezoning and Site Plan Control
2	18 MAY 2023	Issued for Rezoning and Site Plan Control - Resubmission #1
3	13 JUL 2023	Issued for Site Plan Control - Resubmission #2
4	25 AUG 2023	Issued for 100% Design Development
5	18 SEP 2023	Issued for Site Plan Control - Resubmission

- Legend - Cladding Materials**
- (EW1) Exterior Wall Type 1 - Masonry Cladding
 - (EW2) Exterior Wall Type 2 - Sintered Stone Cladding
 - (EW3) Exterior Wall Type 3 - Metal Panel Cladding
 - (EW4) Exterior Wall Type 4 - Triple Glazed Fibreglass Window Clear glazing without frit
 - (EW5) Exterior Wall Type 5 - Triple Glazed Fibreglass Window Clear glazing without frit
 - (W1) Punched Window Type 1 - Triple Glazed Fibreglass Window Clear glazing without frit
 - (W2) Punched Window Type 2 - Triple Glazed Fibreglass Window Clear glazing without frit
 - (W3) Punched Window Type 3 - Triple Glazed Fibreglass Window Clear glazing without frit



NOT FOR CONSTRUCTION



Contractor Must Check & Verify all Dimensions on the Job.
 Do Not Scale Drawings.
 All Drawings, Specifications and Related Documents are the Copyright Property of the Architect and shall be returned upon Request. Reproduction of Drawings, Specifications and Related Documents in Part or in Whole is Prohibited Without the Written Permission of the Architect.
 This Drawing is Not to be Used for Construction Until Signed by the Architect.

OCH Friel Street / Chapel
 200-201 Friel Street (201 Beauséjour), Ottawa, ON K1P 6E1
 221021

South Exterior Building Elevation
 As Indicated
A303
 D07-12-23-0034 (SPC)