

TOPOGRAPHICAL PLAN OF SURVEY OF
LOT 81,
PART OF LOTS 80 and 82
REGISTERED PLAN 109930
CITY OF OTTAWA
 Surveyed by Annis, O'Sullivan, Vollebek Ltd.

Scale 1: 150

Metric
 DISTANCES SHOWN ON THIS PLAN ARE IN METRES AND
 CAN BE CONVERTED TO FEET BY DIVIDING BY 0.3048

Surveyor's Certificate

- I CERTIFY THAT:
1. This survey and plan are correct and in accordance with the Surveys Act and the Surveyors Act and the regulations made under them.
 2. The survey was completed on the 10th day of February, 2022.

FEB 11 2022
 Date

 E. H. Herveyer
 Ontario Land Surveyor

Notes & Legend

Denotes	
—○—	Survey Monument Planted
—■—	Survey Monument Found
—SIB	Standard Iron Bar
—SSIB	Short Standard Iron Bar
—IB	Iron Bar
—CP	Concrete Pin
—IB#	Round Iron Bar
—Meas.	Measured
—(AOC)	Annis, O'Sullivan, Vollebek Ltd.
—(P1)	Registered Plan 109930
—(P2)	(647) Plan March 10, 1983
—(P3)	(1692) Plan March 19, 2020
—(P4)	(647) Plan January 5, 1990
—(P5)	Plan 5R-9048
—(P6)	(647) Plan June 16, 1980
—(P7)	(1473) Plan November 5, 1986
—(PB)	Plan 5R-6674
—(NI)	(632) Field Notes July 25, 1951
—(DI)	Inst. 706 761
—WV	Water Valve
—MH-ST	Maintenance Hole (Storm Sewer)
—MH-S	Maintenance Hole (Sanitary)
—ST	Underground Storm Sewer
—S	Underground Sanitary Sewer
—W	Underground Water
—OW	Overhead Wires
—G	Underground Gas
—B	Underground Bell
—CB	Catch Basin
—GM	Gas Meter
—HH	Handhole
—LS	Light Standard
—UP	Utility Pole
—BF	Board Fence
—D	Diameter
—+ 65.00	Location of Elevations
—+ 66.00	Top of Wall / Concrete Curb Elevation
—C/L	Centreline
—CRW	Concrete Retaining Wall
—T/G	Top of Grate
—Inv.	Invert
—○	Deciduous Tree
—B	Bollard
—S	Sign
—MB	Mail Box

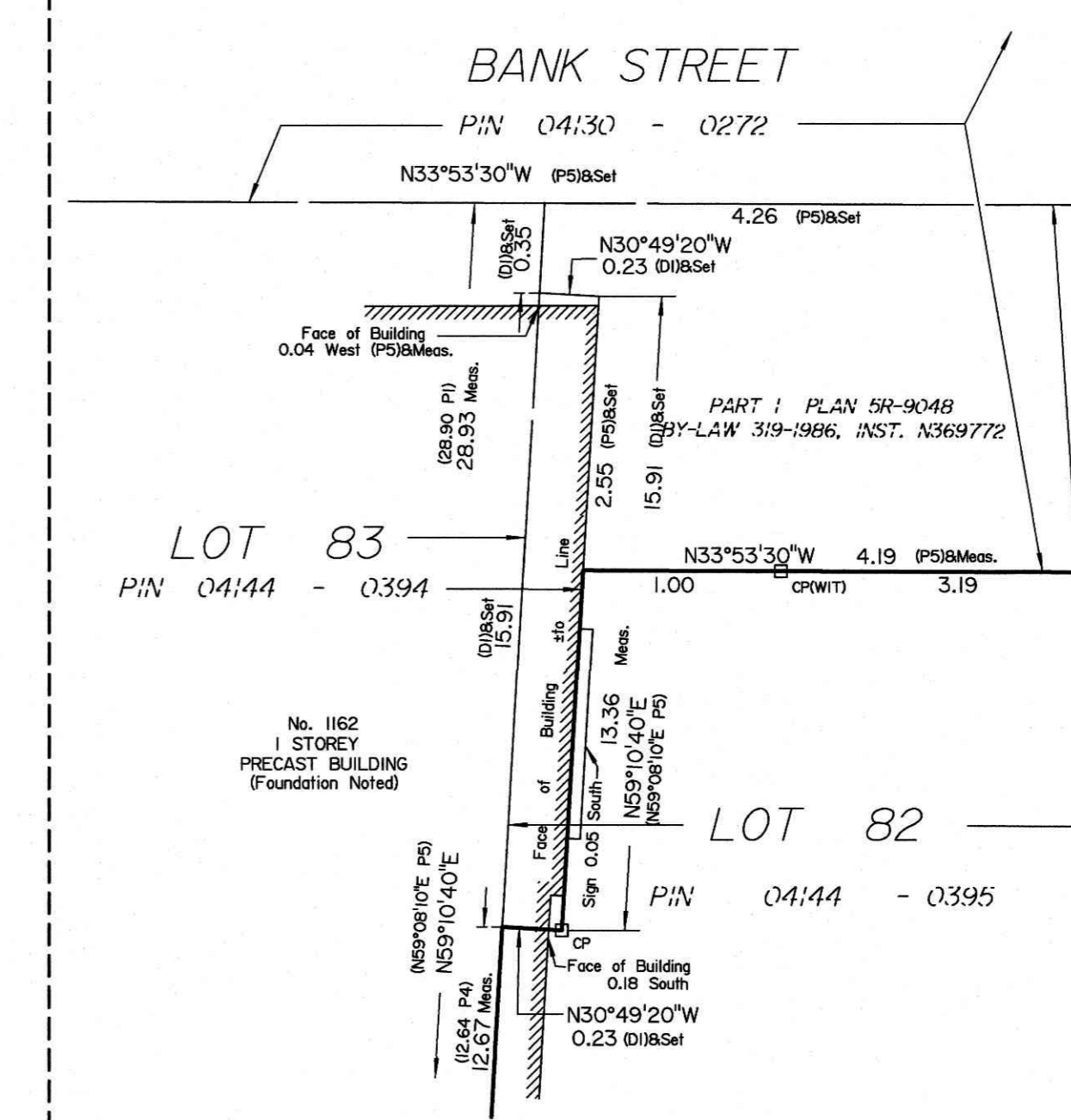
ELEVATION NOTES

1. Elevations shown are geodetic and are referred to the CGVD28 geodetic datum, derived from City of Ottawa Benchmark No. 3637 (Index No. 228) having an elevation of 64.437 metres.
2. It is the responsibility of the user of this information to verify that the job benchmark has not been altered or disturbed and that its relative elevation and description agrees with the information shown on this drawing.

UTILITY NOTES

1. This drawing cannot be accepted as acknowledging all of the utilities and it will be the responsibility of the user to contact the respective utility authorities for confirmation.
2. Only visible surface utilities were located.
3. A field location of underground plant by the pertinent utility authority is mandatory before any work involving breaking ground, probing, excavating etc.
4. Underground services and inverts are taken from City of Ottawa Engineering Plans 11617-12 Sheet 12 of 61 and 11617-13 Sheet 13 of 61.
5. Inverts and catch basins noted with a "*" are scaled from City of Ottawa Engineering Plans 11617-12 and 11617-13 due to ambiguities.

DETAIL NOT TO SCALE



Bearings are grid, derived from the easterly limit of Part 1 Plan 5R-9048 shown to be N34°06'50"W thereon and are referred to MTM Zone 9 (76°30' West Longitude) NAD-83 (original).

For bearing comparisons, a rotation of 0°32'25" counter-clockwise was applied to bearings on plan P2 0°11'30" clockwise was applied to bearings on plan P3

For comparison purposes, bearings shown on Plan P1 are astronomic bearings.

ASSOCIATION OF ONTARIO
 LAND SURVEYORS
 PLAN SUBMISSION FORM
V-22562

THIS PLAN IS NOT VALID UNLESS
 IT IS AN EMBOSSED ORIGINAL
 COPY ISSUED BY THE SURVEYOR
 In accordance with
 Regulation 1026, Section 29 (3).

© Annis, O'Sullivan, Vollebek Ltd. 2019. THIS PLAN IS PROTECTED BY COPYRIGHT.
ANNIS, O'SULLIVAN, VOLLEBEK LTD.
 14 Concourse Gate, Suite 500
 Nepean, Ont. K2E 7S8
 Phone: (613) 727-0850 / Fax: (613) 727-1079
 Email: Annis@anniso.com
 Ontario Land Surveyors
 Job No. 22660-22, Ambrosador, P/L 80, P/L 109930, T.F.