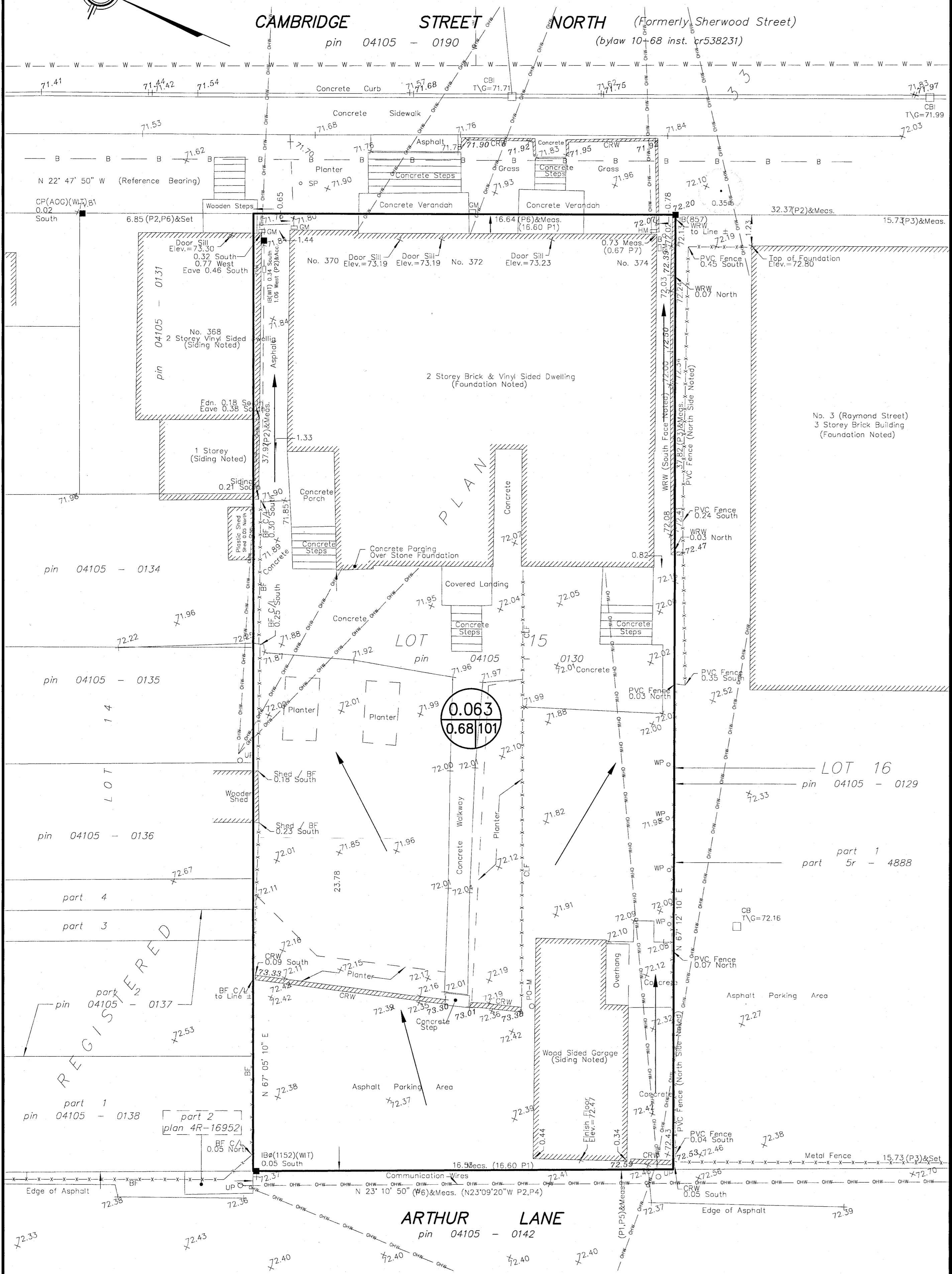
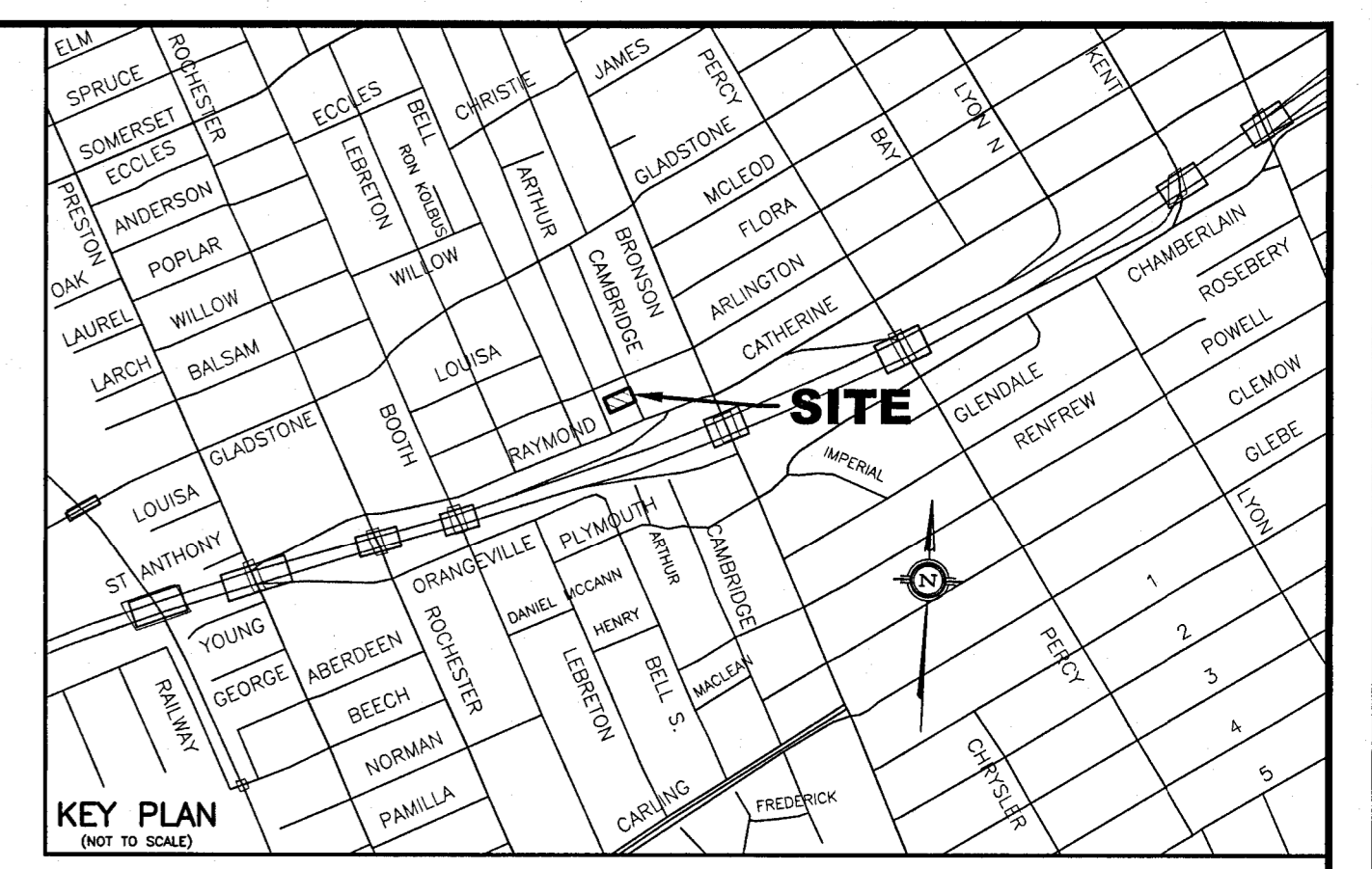
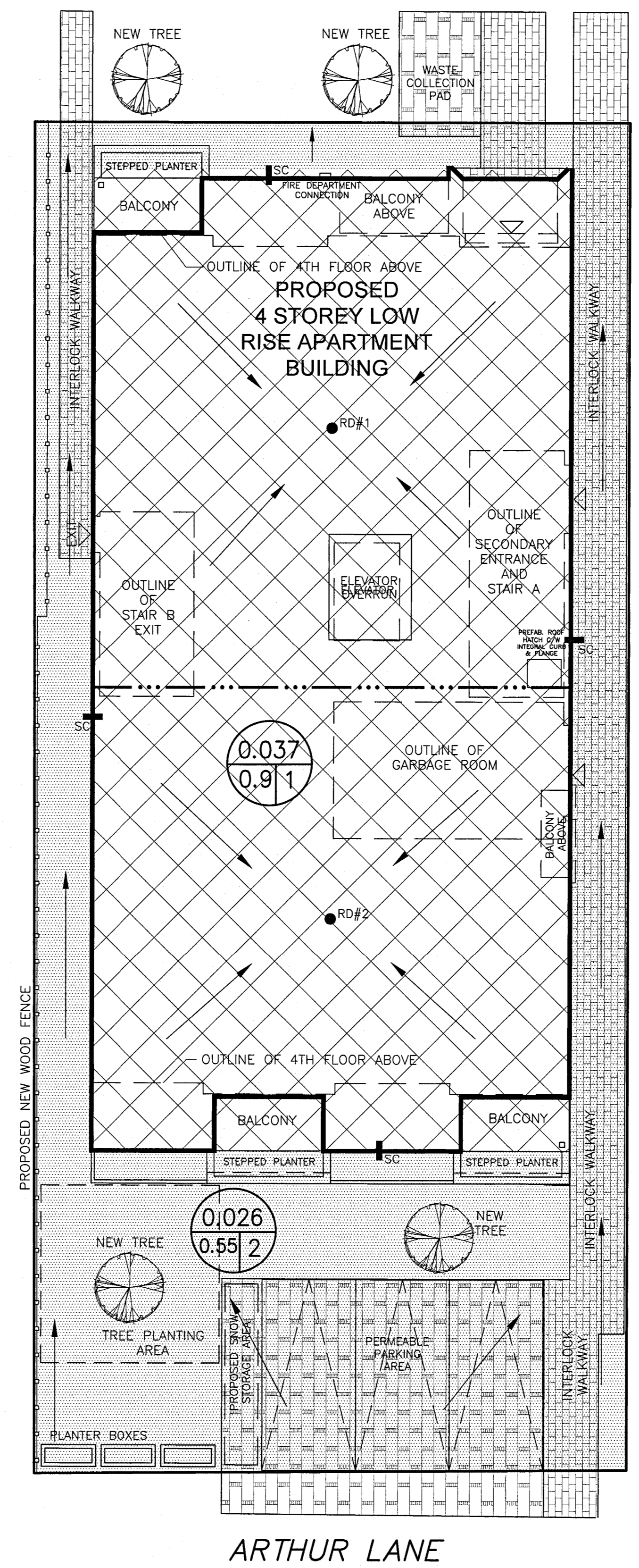


PRE - DEVELOPMENT STORM DRAINAGE AREA

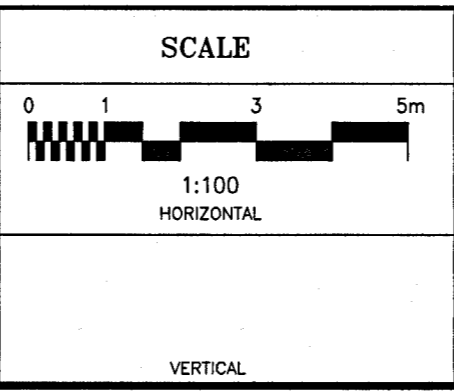
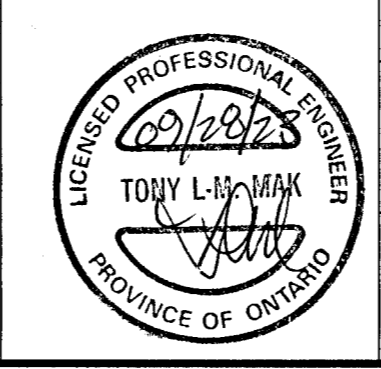


POST DEVELOPMENT STORM DRAINAGE AREA



- LEGEND**
- RD#1 PROPOSED ROOF DRAIN NUMBER AND LOCATION
 - SC PROPOSED ROOF SCUPPER LOCATION
 - PROPOSED HIGH RIDGE LINE
 - 0.002 / 0.9/2 DRAINAGE AREA IN HECTARES / DRAINAGE NODE NUMBER
 - COEFFICIENT OF RUNOFF
 - UN-CONTROLLED DRAINAGE AREA
 - ▨ CONTROLLED DRAINAGE AREA
- NOTES**
- NODE #1 REPRESENTS BUILDING ROOF AREA (SWM CONTROLLED AREA)
 - NODE #2 REPRESENTS UNCONTROLLED DRAINAGE AREA
 - NODE #101 REPRESENTS PRE-DEVELOPMENT DATA.

NO.	REVISION	DATE	BY
2	REVISION TO INCLUDE CITY OF OTTAWA PROJECT NUMBER AND PLAN NUMBER AS PER CITY'S REQUEST OF JUNE 20, 2023 AND PER HOUSE DESIGNER'S REVISION SITE PLAN OF AUGUST 23, 2023.	09/28/23	TLM
1	REVISIONS AS PER HOUSE DESIGNER'S LATEST REVISED SITE PLAN OF AUGUST 8, 2022	08/08/22	TLM



DESIGN	T.L.M.
CHECKED	T.L.M.
DRAWN BY	P.M.
CHECKED	T.L.M.
APPROVED	T.L.M.

PROJECT
370 CAMBRIDGE STREET NORTH
 LOT 15
 WEST CAMBRIDGE STREET NORTH
 SOUTH OF STONE BOUNDARY
 REGISTERED PLAN 33
 CITY OF OTTAWA

DRAWING TITLE
STORM DRAINAGE AREA PLAN

		PROJECT No.	DATE	DRAWING No.
		821-155	APRIL 2022	D-1