



By E-mail: [dinis@urbanlux.ca](mailto:dinis@urbanlux.ca)

December 13, 2023

Our File Ref.: 230537

JLG Developments  
9 Calais Court  
Ottawa, Ontario

Attention: Dinis Cabral  
Subject: Site Lighting Certificate - 4 Storey - 20 Unit Development  
Location: 370 Cambridge Street North, Ottawa, ON

Dear Dinis,

The following is to confirm that the proposed site lighting design for the above-mentioned project complies with the City of Ottawa standards pertaining to full cut-off classification fixtures and minimal light spillage ( maximum 5.0 Lux or 0.5 fc ) on adjacent properties.

In the summary of our lighting design simulation, the lighting levels at the property line are as follows:

1. Average Lighting Level: 0.54 lux or 0.5 fc
2. Minimum Lighting Level: 0.00 lux or 0.00 fc
3. Maximum Lighting Level: 5.00 lux or 0.5 fc

The proposed Light fixture model is identified on the Light Simulation Document, as attached. The proposed fixtures are all wall mounted at between 7ft, 9ft and 14ft as indicated on the Light Simulation Drawing preceded by MH:.

Yours truly,  
LRL Associates Ltd.

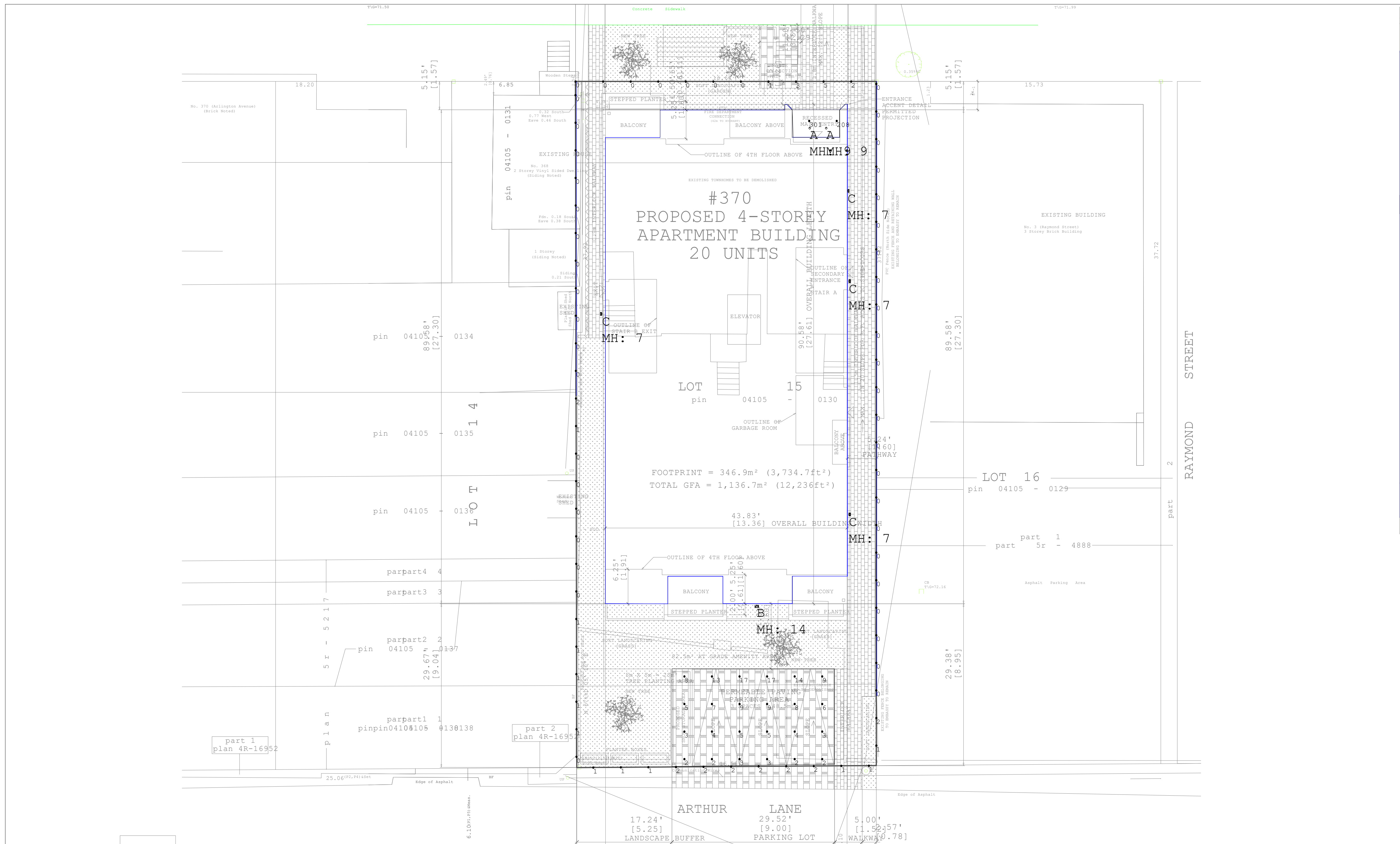
*Karl Brown*

Karl Brown, Electrical Designer



Martin Tessier, P. Eng





Calculation Summary

Label	CalcType	Units	Avg	Max	Min	Avg/Min	Max/Min
ENTRANCE	Illuminance	Lux	254.50	301	208	1.22	1.45
PARKING	Illuminance	Lux	6.67	17	2	3.34	8.50
PROPERTY LINE	Illuminance	Lux	0.54	5	0	N.A.	N.A.

Luminaire Schedule

Symbol	Qty	Label	Arrangement	Description	Tag	LLF	Luminaire Lumens	Luminaire Watts	Total Watts
⊙	2	A	Single	LBRP-M-LSSLCS9 _ LBRP-4RD-T-D		0.900	1174	14.1	28.2
⊞	1	B	Single	SG1-20-3K7-FT		0.900	2054	21.616	21.616
⊞	4	C	Single	SG1-10-3K		0.900	1346	11.4	45.6



MVP LIGHTING  
 Stewart Impey | Principal  
 o: 613-800-9909 ext #3  
 c: 613-282-0997

Drawn By:  
 Checked By:  
 Date: 2023-12-12  
 Scale: