

Job Benchmark  
 FH Top of Spindle  
 Elevation = 72.04

**ELEVATION NOTES**

- Elevations shown are geodetic and are referred to the CGVD28 geodetic datum, derived from City of Ottawa vertical control monument No. 3803 having an elevation of 78.959 metres.
- It is the responsibility of the user of this information to verify that the job benchmark has not been altered or disturbed and that its relative elevation and description agrees with the information shown on this drawing.

**UTILITY NOTES**

- This drawing cannot be accepted as acknowledging all of the utilities and it will be the responsibility of the user to contact the respective utility authorities for confirmation.
- Only visible surface utilities were located.
- Underground utility data derived from City of Ottawa utility sheet reference F-10-08C
- Sewer grades and inverts were derived from City of Ottawa Plan Reference 3335 (Sheet 3 of 24)
- A field location of underground plant by the pertinent utility authority is mandatory before any work involving breaking ground, probing, excavating etc.

**SURVEYOR'S REAL PROPERTY REPORT**

**PART 1** Plan of  
**LOT 15**  
**WEST CAMBRIDGE STREET NORTH**  
**SOUTH OF STONE BOUNDARY**  
**REGISTERED PLAN 33**  
**CITY OF OTTAWA**  
 Surveyed by Annis, O'Sullivan, Vollebek Ltd.

Scale 1:100

**Metric**  
 DISTANCES SHOWN ON THIS PLAN ARE IN METRES AND CAN BE CONVERTED TO FEET BY DIVIDING BY 0.3048

**Surveyor's Certificate**

- I CERTIFY THAT:
- This survey and plan are correct and in accordance with the Surveys Act and the Surveyors Act and the regulations made under them.
  - The survey was completed on the 25th day of March, 2021.

April 19 2021  
 Date  
 E. H. Herveyer  
 Ontario Land Surveyor

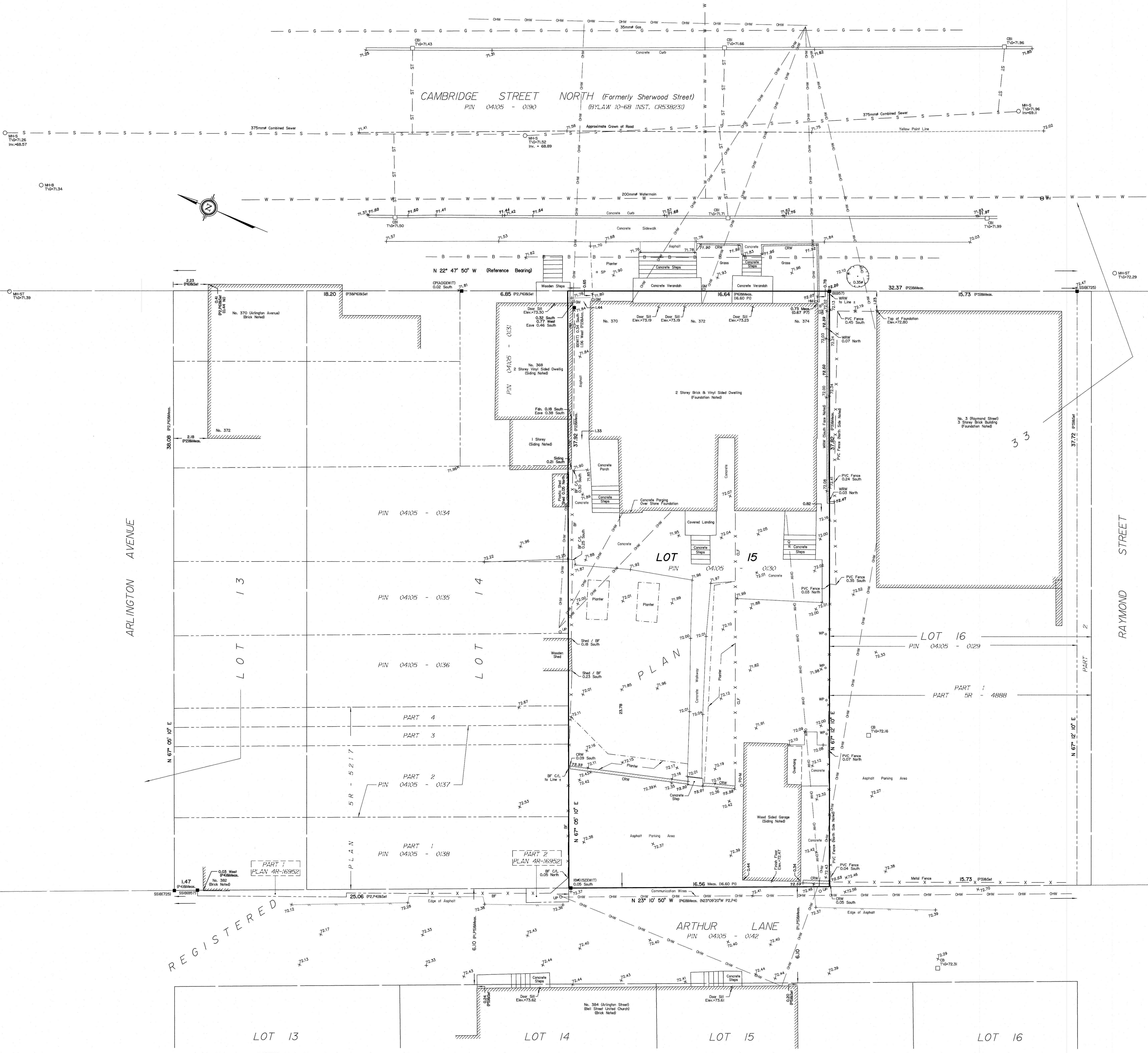
**PART 2**  
 THIS PLAN MUST BE READ IN CONJUNCTION WITH SURVEY REPORT DATED April 19, 2021

ANNIS, O'SULLIVAN, VOLLEBEK LTD. grants to \_\_\_\_\_ 2250276 Ontario Inc. (The Client), their successors, mortgagees, and other related parties, permission to use original, signed, sealed copies of the Surveyor's Real Property Report in transactions involving The Client.

**Notes & Legend**

Denotes	Survey Monument Planted
—	Survey Monument Found
SIB	Standard Iron Bar
SSIB	Short Standard Iron Bar
IB	Iron Bar
CP	Concrete Pin
IBP	Round Iron Bar
(WIT)	Witness
Misc.	Measured
(AOG)	Annis, O'Sullivan, Vollebek Ltd.
(P1)	Registered Plan 33
(P2)	(AOG) Plan July 30, 2007
(P3)	Plan SR-4888
(P4)	Plan AR-16952
(P5)	(857) Plan February 2, 1995
(P6)	(671) Plan January 10, 1985
(P7)	(857) Plan June 8, 1972
(NI)	Field Notes (632) Field book 159-123
○ MH-ST	Maintenance Hole (Storm Sewer)
○ MH-S	Maintenance Hole (Sanitary)
— ST	Underground Storm Sewer
— S	Underground Sanitary Sewer
— W	Underground Water
— G	Underground Gas
— OHW	Overhead Wires
— B	Underground Bell
○ UP	Utility Pole
□ CB	Catch Basin Inlet
○ FH	Fire Hydrant
Invt.	Invert
T/G	Top of Grate
□ GM	Gas Meter
□ HM	Hydro Meter
□ GM	Gas Meter
□ HM	Hydro Meter
○	Deciduous Tree
○ B	Bollard
○ PO-M	Metal Pole
○	Diameter
○ 65.00	Location of Elevations
○ 65.00	Top of Concrete Curb / Retaining Wall Elevation
C/L	Centreline
CLF	Chain Link Fence
BF	Board Fence
PVC	Plastic Fence
CRW	Concrete Retaining Wall
WRW	Wooden Retaining Wall

Bearings are grid, derived from... and are referred to the Central Meridian of MTM Zone 9 ( 78°30' West Longitude ) NAD-83 (original).  
 For bearing comparisons, a rotation of 0°30'50" counter-clockwise was applied to bearings on P2, P3, P4 & P6.



ASSOCIATION OF ONTARIO  
 LAND SURVEYORS  
 PLAN SUBMISSION FORM  
 V-11460  
 THIS PLAN IS NOT VALID UNLESS  
 IT IS AN UNCOPIED ORIGINAL  
 COPY ISSUED BY THE SURVEYOR  
 in accordance with  
 Regulation 1026, Section 29 (3).

ANNIS, O'SULLIVAN, VOLLEBEK LTD. 2021 THIS PLAN IS PROTECTED BY COPYRIGHT  
 ANNIS, O'SULLIVAN, VOLLEBEK LTD.  
 14 Concourse Circle, Suite 500  
 Niagara, Ont. N2E 7S6  
 Phone: (905) 727-0850 / Fax: (905) 727-1079  
 Email: Annis@annisov.com  
 Ont. Reg. No. 21327-21 L1 U 133 T F