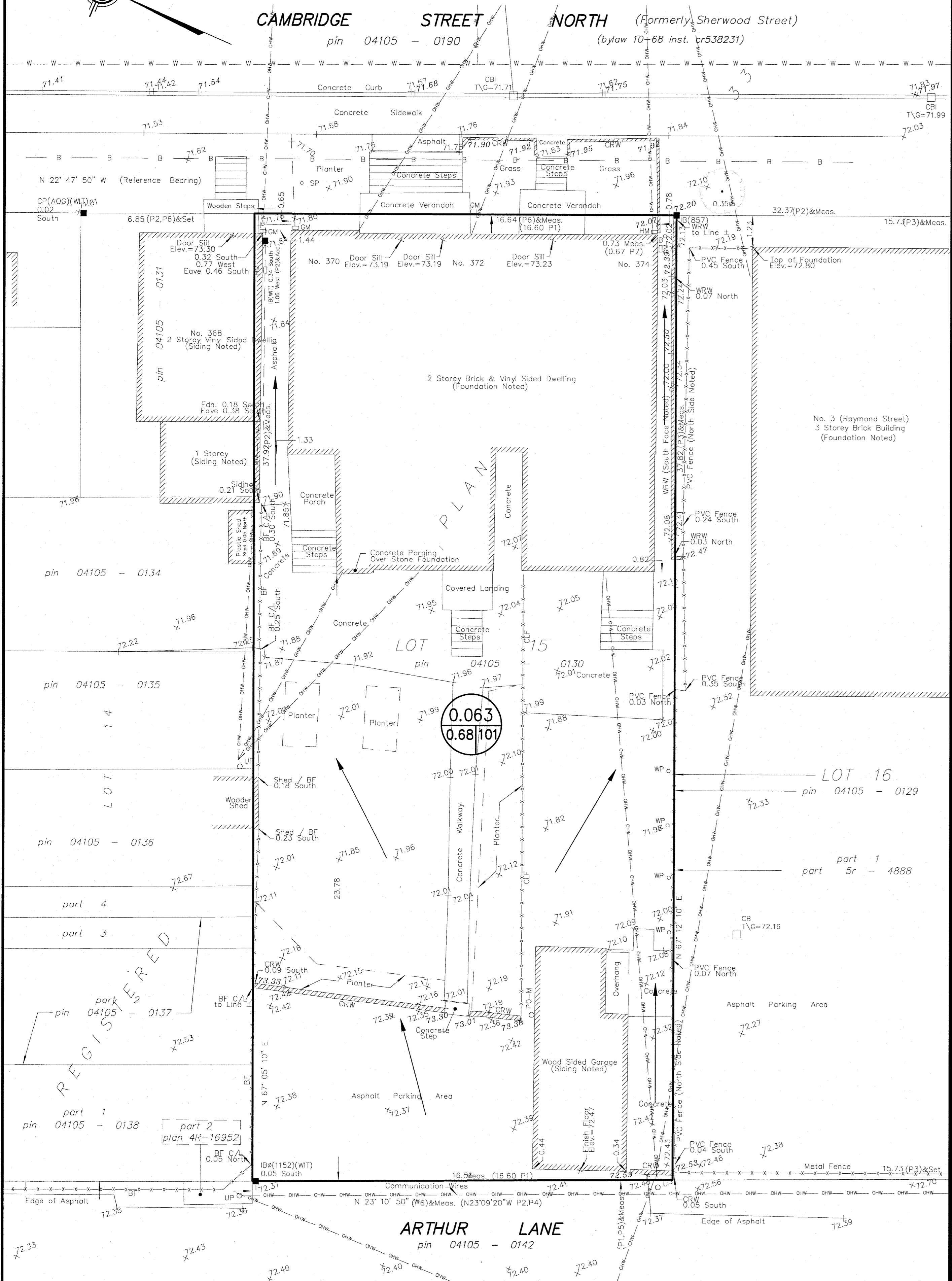
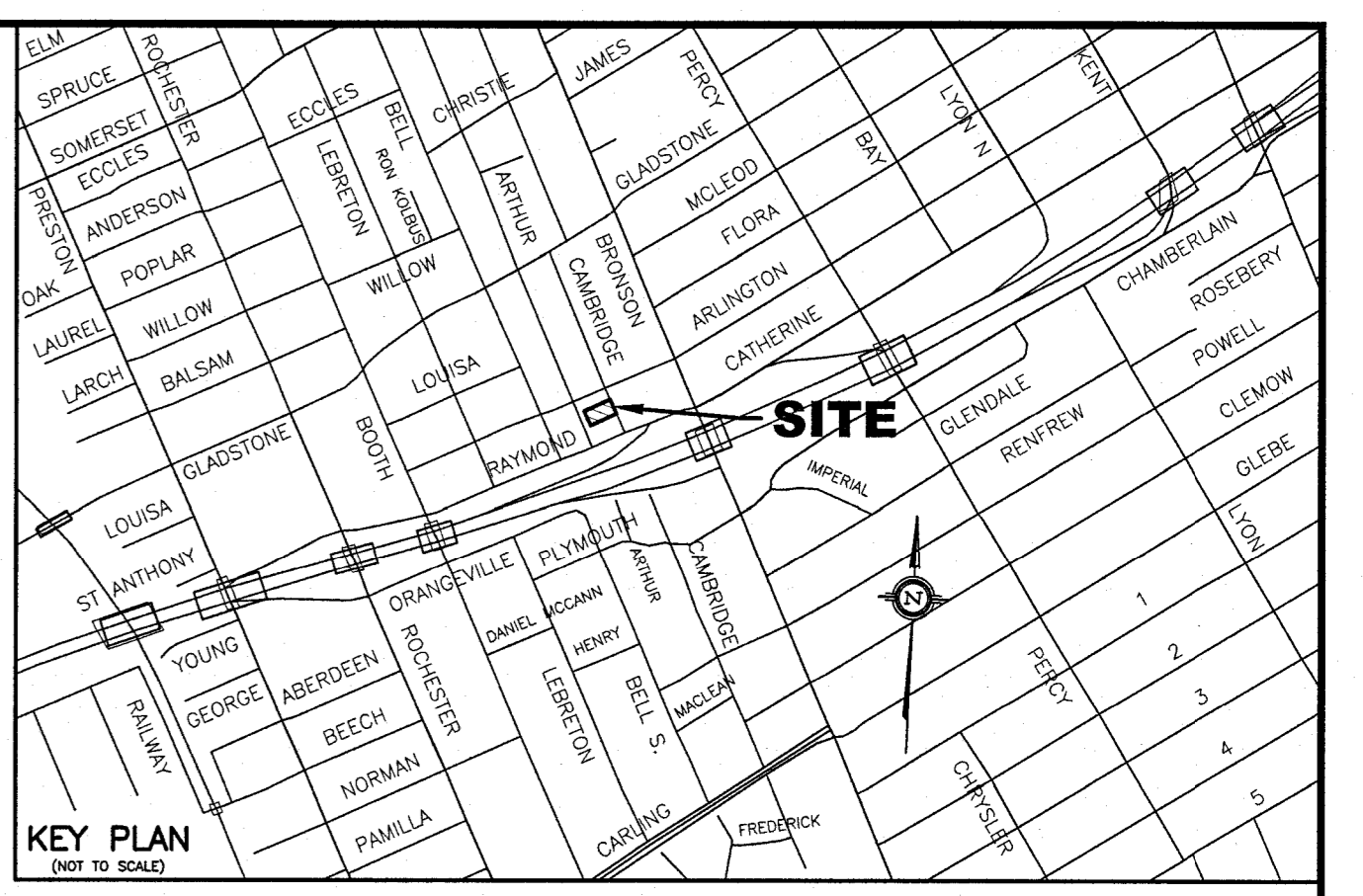
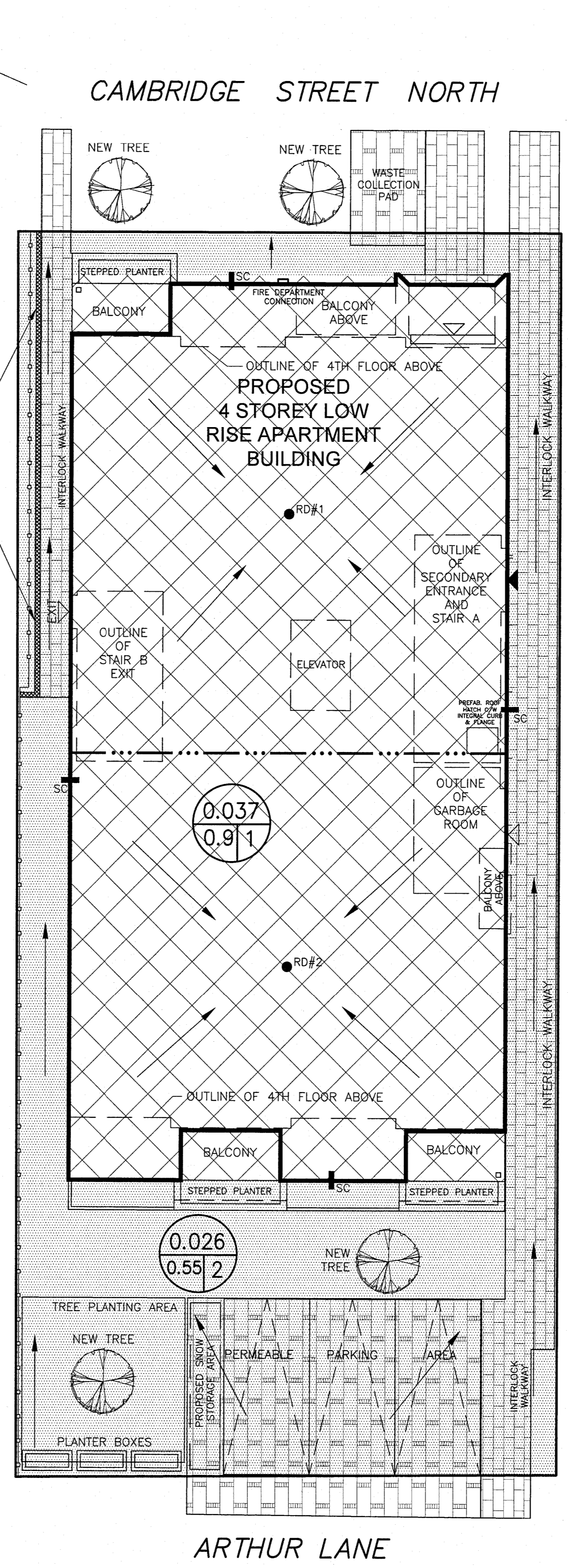


PRE - DEVELOPMENT STORM DRAINAGE AREA



POST DEVELOPMENT STORM DRAINAGE AREA



- LEGEND**
- RD#1 PROPOSED ROOF DRAIN NUMBER AND LOCATION
 - SC PROPOSED ROOF SCUPPER LOCATION
 - ▬▬▬ PROPOSED CONCRETE BARRIER CURB LOCATION
 - PROPOSED HIGH RIDGE LINE
 - (0.002 / 0.9 / 2) DRAINAGE AREA IN HECTARES
 - (0.002 / 0.9 / 2) DRAINAGE NODE NUMBER
 - COEFFICIENT OF RUNOFF
 - ▭ UN-CONTROLLED DRAINAGE AREA
 - ▨ CONTROLLED DRAINAGE AREA
- NOTES**
- NODE #1 REPRESENTS BUILDING ROOF AREA (SWM CONTROLLED AREA)
 - NODE #2 REPRESENTS UNCONTROLLED DRAINAGE AREA
 - NODE #101 REPRESENTS PRE-DEVELOPMENT DATA.

NO.	REVISION	DATE	BY
3	REVISIONS AS PER HOUSE DESIGNER'S LATEST REVISED SITE PLAN PROVIDED ON NOVEMBER 28, 2022 AND PER CITY'S REVIEW COMMENTS OF NOVEMBER 27, 2022	12/01/23	T.L.M.
2	REVISIONS TO INCLUDE CITY OF OTTAWA HOUSE NUMBER AND PLAN NUMBER AS PER CITY'S REQUEST OF JUNE 23, 2023 AND PER HOUSE DESIGNER'S REVISED SITE PLAN OF AUGUST 28, 2023	09/28/23	T.L.M.
1	REVISIONS AS PER HOUSE DESIGNER'S LATEST REVISED SITE PLAN OF AUGUST 6, 2022	08/08/22	T.L.M.



SCALE

0 1 2 3 5m

1:100 HORIZONTAL

VERTICAL

DESIGN T.L.M.
CHECKED T.L.M.
DRAWN BY P.M.
CHECKED T.L.M.
APPROVED T.L.M.

PROJECT
370 CAMBRIDGE STREET NORTH
LOT 15
WEST CAMBRIDGE STREET NORTH
SOUTH OF STONE BOUNDARY
REGISTERED PLAN 33
CITY OF OTTAWA

DRAWING TITLE
STORM DRAINAGE AREA PLAN

T.L. MAK ENGINEERING CONSULTANTS LTD.
CONSULTING ENGINEERS

PROJECT No. 821-155
DATE APRIL 2022
DRAWING No. D-1

D07-12-23-0036

#18957