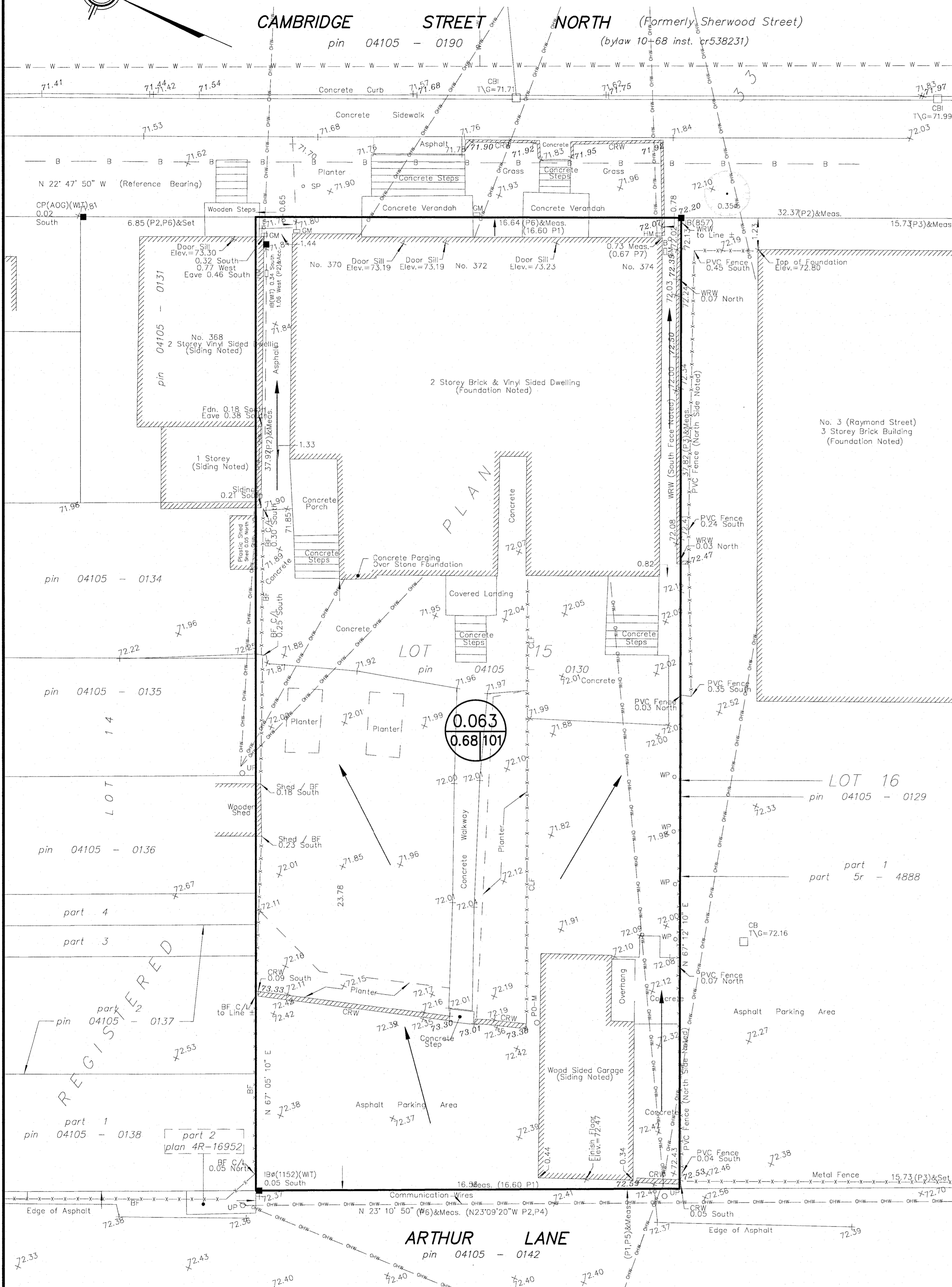
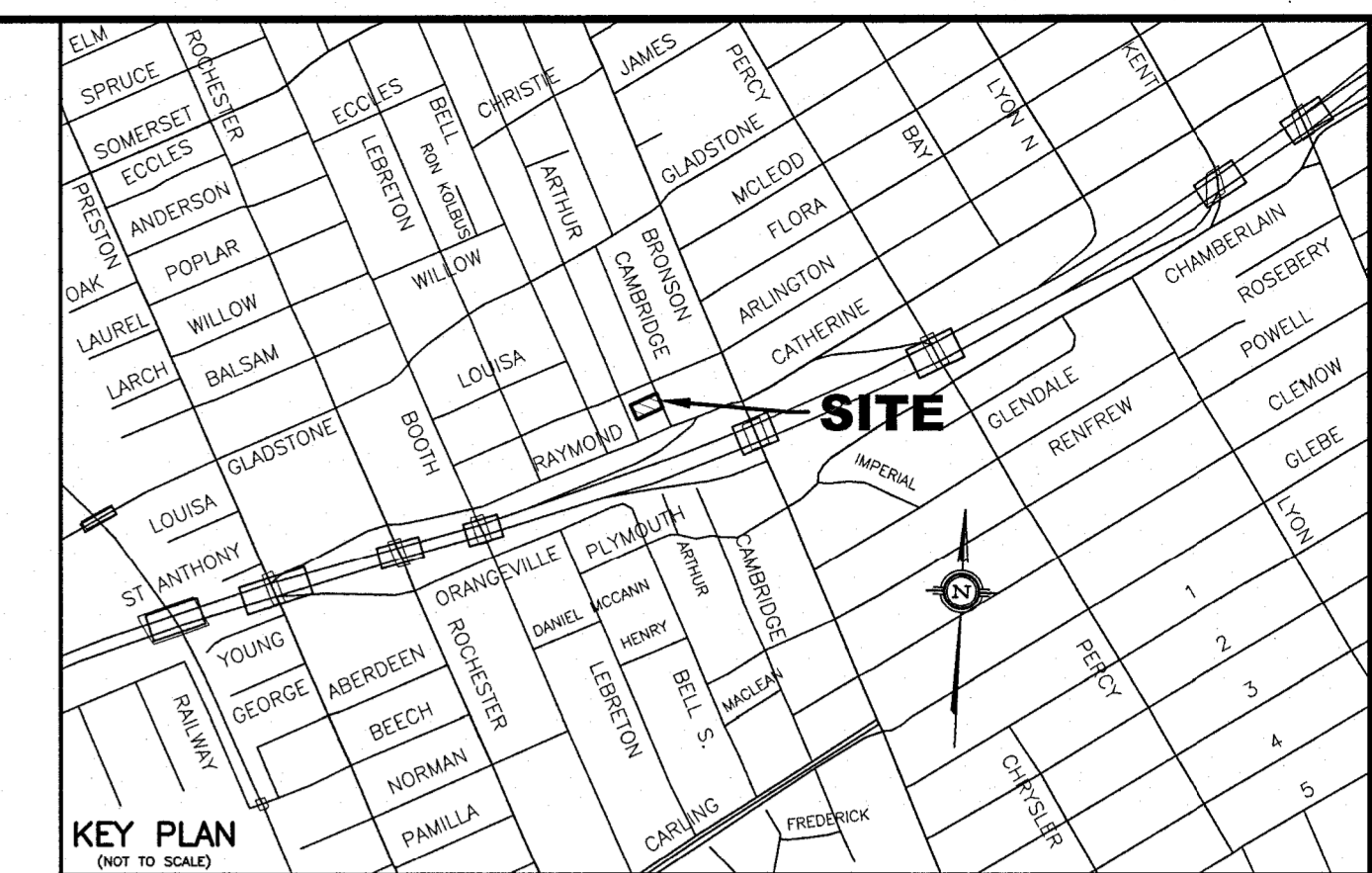
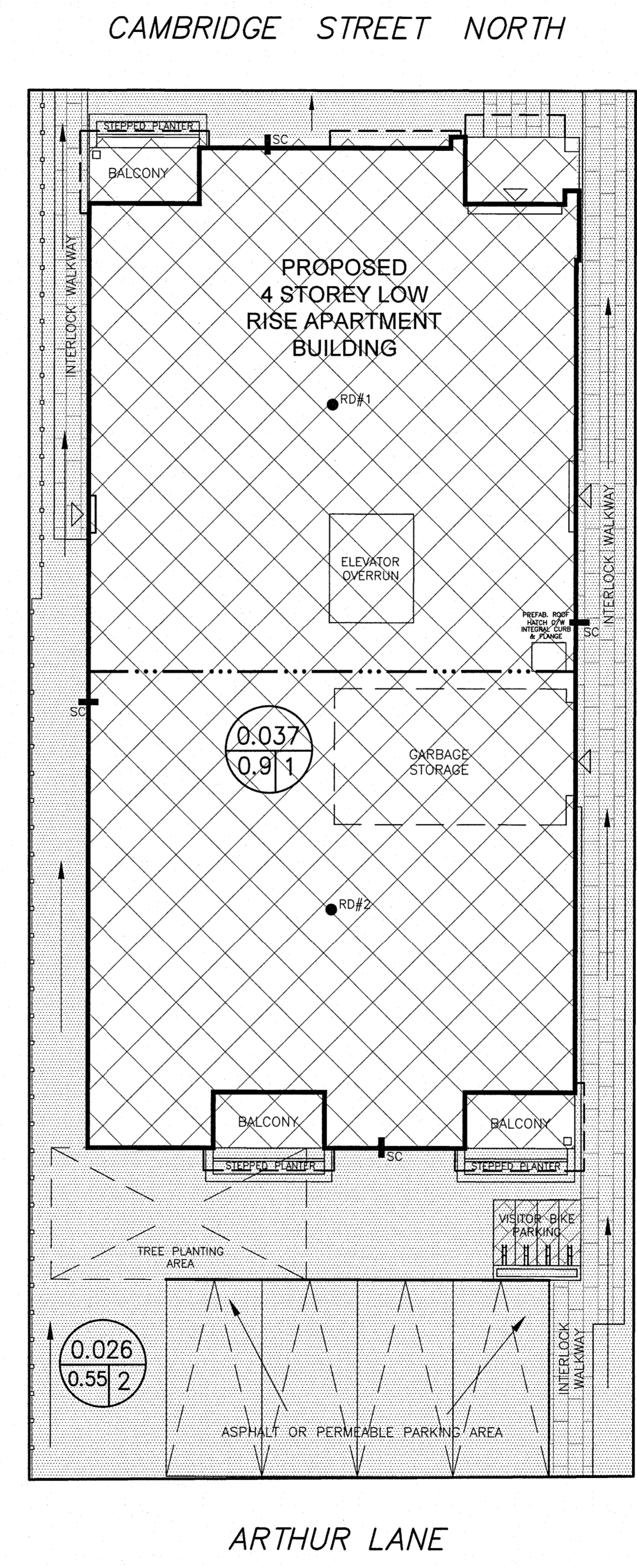


**PRE - DEVELOPMENT STORM DRAINAGE AREA**

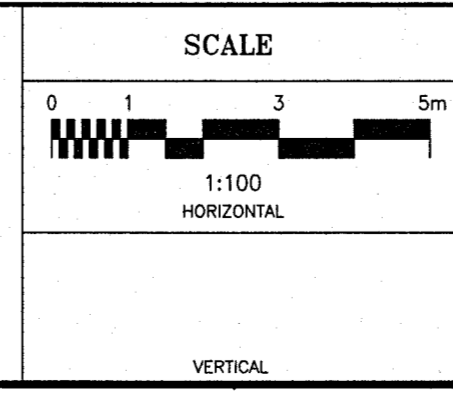
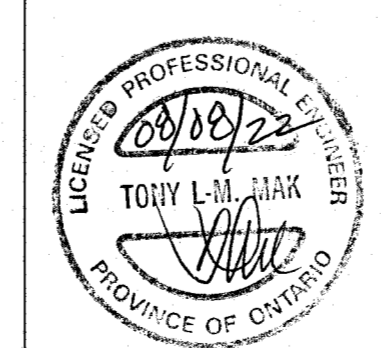


**POST DEVELOPMENT STORM DRAINAGE AREA**



- LEGEND**
- RD#1 PROPOSED ROOF DRAIN NUMBER AND LOCATION
  - SC PROPOSED ROOF SCUPPER LOCATION
  - — — PROPOSED HIGH RIDGE LINE
  - 0.002 / 0.9/2 DRAINAGE AREA IN HECTARES / DRAINAGE NODE NUMBER
  - COEFFICIENT OF RUNOFF
  - ▨ UN-CONTROLLED DRAINAGE AREA
  - ▩ CONTROLLED DRAINAGE AREA
- NOTES**
- NODE #1 REPRESENTS BUILDING ROOF AREA (SWM CONTROLLED AREA)
  - NODE #2 REPRESENTS UNCONTROLLED DRAINAGE AREA
  - NODE #101 REPRESENTS PRE-DEVELOPMENT DATA.

NO.	REVISION	DATE	BY
1	REVISIONS AS PER HOUSE DESIGNER'S LATEST REVISED SITE PLAN OF AUGUST 8, 2022	08/08/22	TLM



DESIGN	T.L.M.
CHECKED	T.L.M.
DRAWN BY	P.M.
CHECKED	T.L.M.
APPROVED	T.L.M.

PROJECT  
 370 CAMBRIDGE STREET NORTH  
 LOT 15  
 WEST CAMBRIDGE STREET NORTH  
 SOUTH OF STONE BOUNDARY  
 REGISTERED PLAN 33  
 CITY OF OTTAWA

DRAWING TITLE  
**STORM DRAINAGE AREA PLAN**

T.L. MAK ENGINEERING CONSULTANTS LTD.  
 CONSULTING ENGINEERS

PROJECT No.	DATE	DRAWING No.
821-155	APRIL 2022	D-1