

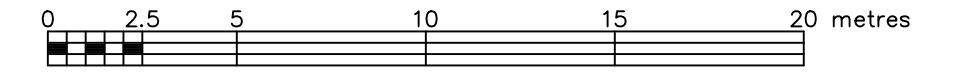
ALEXANDER STREET

TOPOGRAPHIC SKETCH OF

2026 CARP ROAD CITY OF OTTAWA

FARLEY, SMITH & DENIS SURVEYING LTD. 2023

Scale 1: 200



Metric Note

Distances and coordinates on this plan are in metres and can be converted to feet by dividing by 0.3048.

Distance Note

Distances shown on this plan are ground distances and can be converted to grid distances by multiplying by the combined scale factor of 0.99993.

Bearing Note

Bearings are grid, are referred to the northeasterly limit of Carp Road as widened having a bearing of N 42° 17' 50" W as shown on Plan SR-4886 and are referred to the Central Meridian of MTM Zone 9 (76°30' West Longitude) Nad-83 (Original). For bearing comparisons, a rotation of 0°21'10" counter-clockwise was applied to bearings on P1.

Boundary Note

Boundary and topographic information compiled from a Topographic Plan of Survey by (1692) dated November 10, 2021. (FSD Reference 78-21)

Revisions have been made to reflect current site conditions (removal of trees on the subject property) as well as to include additional trees on neighbouring properties.

Elevation Notes

- 1. Elevations shown are geodetic and are referred to Geodetic Datum CGVD-1928 -1978. (See FSD File No. 365-18)
2. It is the responsibility of the user of this information to verify that the job benchmark has not been altered or disturbed and that its relative elevation and description agrees with the information shown on this drawing.

Utility Notes

- 1. This drawing cannot be accepted as acknowledging all of the utilities and it will be the responsibility of the user to contact the respective utility authorities for confirmation.
2. Only visible surface utilities were located.
3. Underground utility data derived from City of Ottawa utility sheet reference: O-Q-05, O-Q-09, O-Q-15, 7894p&p08, 7894p&p09, 11867p&p8 & 11867p&p9.
4. A field location of underground plant by the pertinent utility authority is mandatory before any work involving breaking ground, probing, excavating etc.

Notes & Legend

Table with 2 columns: Symbol and Description. Includes symbols for Survey Monument Planted, Standard Iron Bar, Short Standard Iron Bar, Iron Bar, Witness, Measured, Plan SR-793, Plan SR-4886, Plan by (AOG) dated April 25, 2018, Plan by (857) dated December 16, 2015, Plan 4R-12904, Notes by (647) dated December 20, 1973, Underground Sanitary Sewer, Underground Water, Underground Gas, Underground Bell, Overhead Wires, Utility Pole, Anchor, Sign, Diameter, Chain Link Fence, Board Fence, Metal Fence, Stone Retaining Wall, Underside of Eave, Top of Foundation, Centreline, Location of Elevations, Top of Retaining Wall Elevation, Property Line.

Deciduous Tree - The Symbol shown denotes location and trunk diameter only. Size of its root system/overhead canopy may be smaller/larger than the symbol size depicted on this plan.
Coniferous Tree - The Symbol shown denotes location and trunk diameter only. Size of its root system/overhead canopy may be smaller/larger than the symbol size depicted on this plan.

LEGAL DESCRIPTION OF PROPERTY PART OF LOT 1 CONCESSION 2 GEOGRAPHIC TOWNSHIP OF HUNTLEY CITY OF OTTAWA

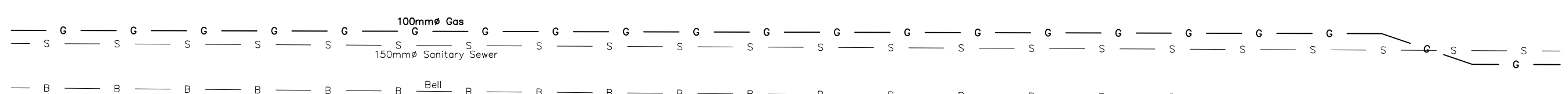
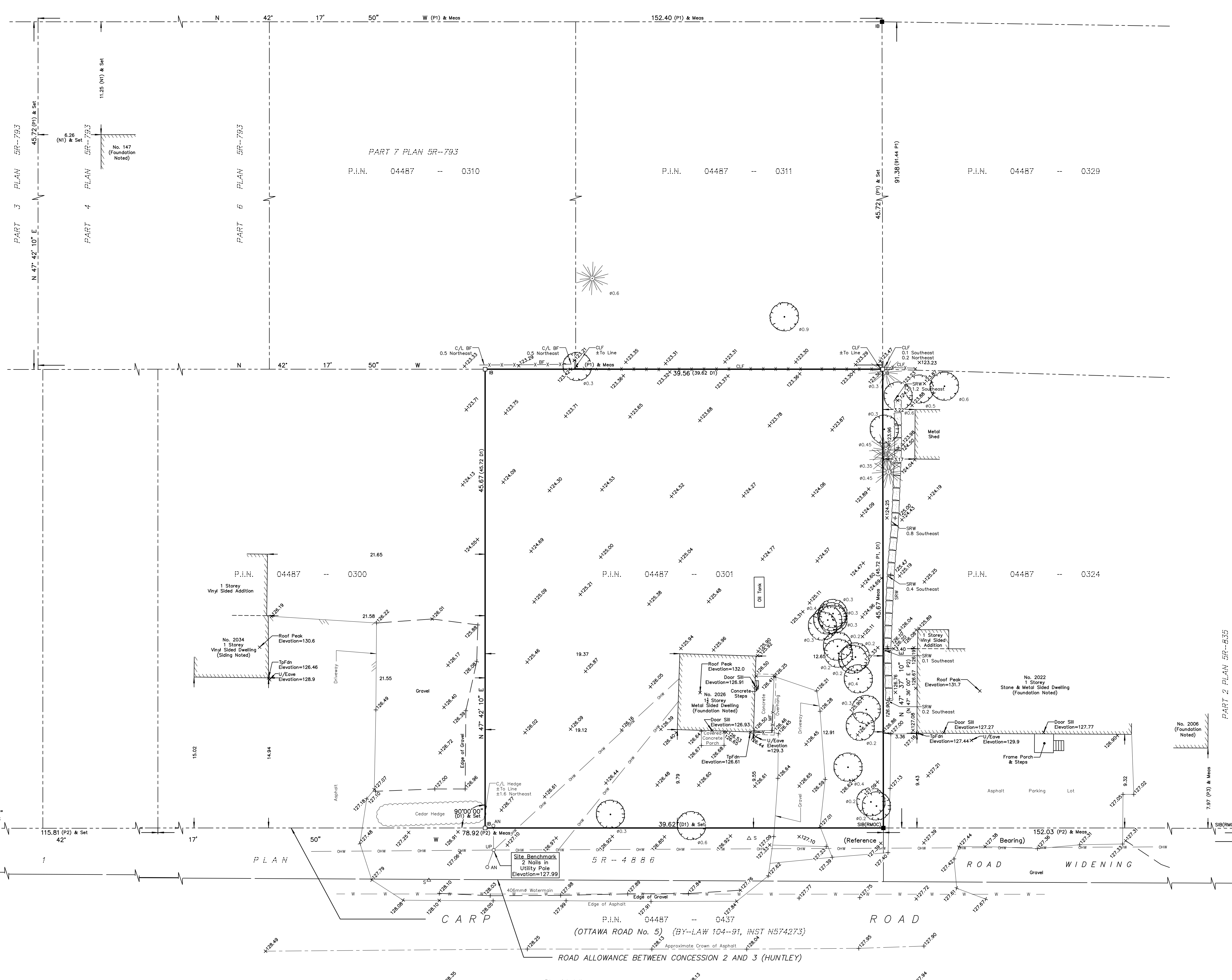
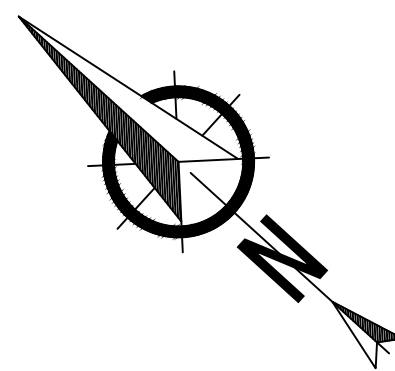
Caution

- 1. This is not a plan of survey and shall not be used except for the purpose indicated in the title block.
2. This sketch is protected by copyright.

Fieldwork completed December 22, 2022

FARLEY, SMITH & DENIS SURVEYING LTD.

ONTARIO LAND SURVEYORS CANADA LAND SURVEYORS
Unit 275, 30 COLONNADE ROAD, OTTAWA, ONTARIO K2E 7J6
TEL: (613) 727-8226 E-mail: fdsurveys@bellnet.ca



TOPOGRAPHIC DATA WAS COLLECTED UNDER WINTER CONDITIONS. SNOW COVER AND ICE PRECLUDE DETERMINING LOCATION AND ELEVATION OF SOME TOPOGRAPHICAL DATA THAT IS OTHERWISE VISIBLE.

WARNING: NO PERSON MAY COPY, REPRODUCE, DISTRIBUTE OR ALTER THIS PLAN IN WHOLE OR IN PART WITHOUT THE WRITTEN PERMISSION OF FARLEY, SMITH & DENIS SURVEYING LTD. © FARLEY, SMITH & DENIS SURVEYING LTD., 2023.