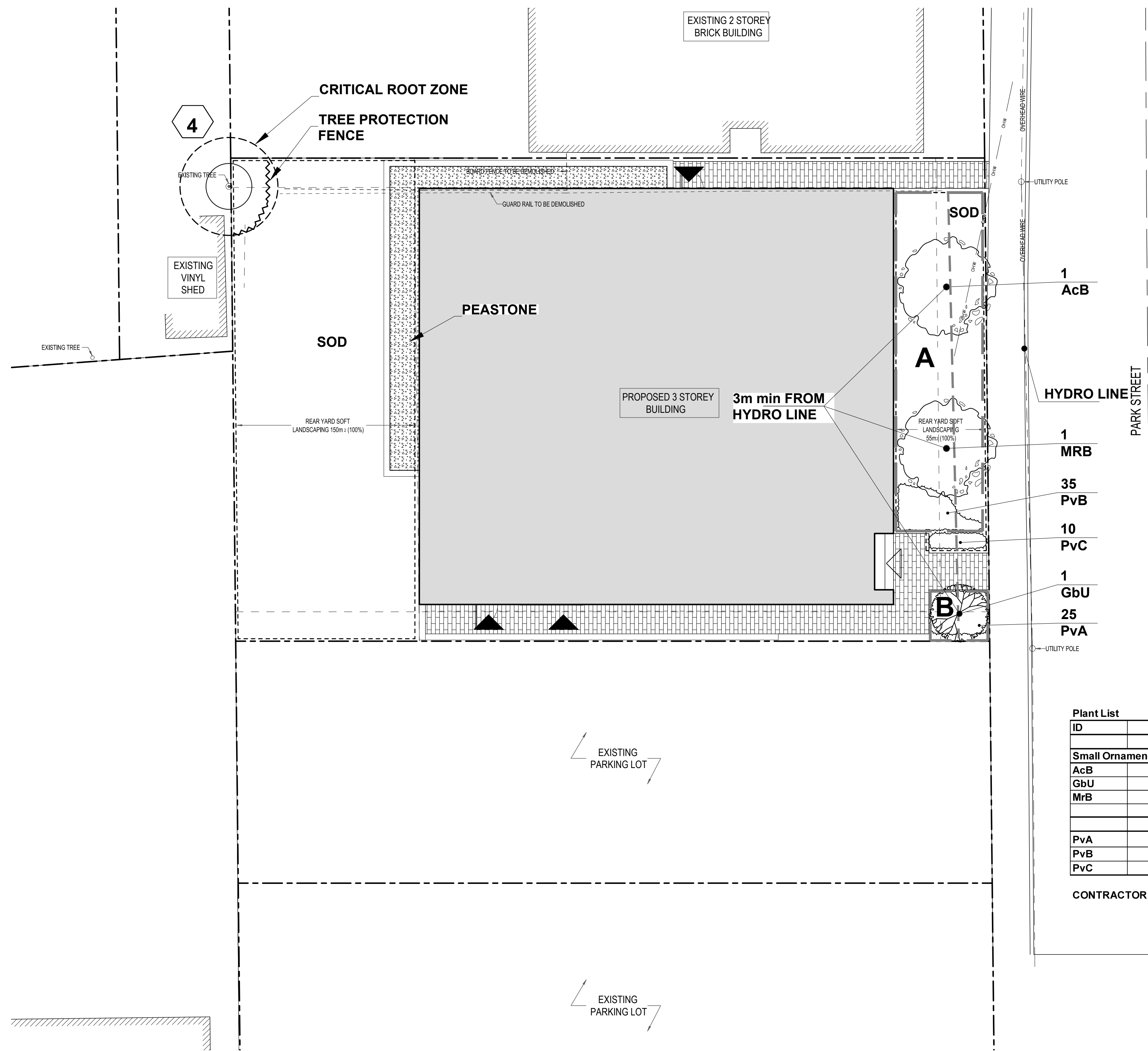


PLAN TO BE READ IN CONJUNCTION WITH 'TREE CONSERVATION REPORT FOR 266 Park Street OTTAWA ON' MARCH 20, 2023 BY Kevin Myers, MFC ISA Certified Arborist®, ON-2907A Dendron Forestry Services



266 Park Street Ottawa ON				
Soil Volume Area, Tree Quantity and Size	Tree Quantity	OTTAWA Target Soil Volume (m ³)	Design Soil Volume	Soil Adequacy percentage
AREA A - 2 Ornamental trees				
plant bed (50 sq m x 0.4 metre deep)	2	18.0	20.0	111.11%
AREA B - 1 small ornamental tree				
plant bed (5 sq m x 0.9 metre deep)	1	5.0	4.5	90.00%

* Small ornamental trees with growth to 8-15cm DBH, columnar conifers calculated using 'How much soil to grow a big tree' by DeepRoot as a guide

ID	Qty	Botanical Name	Common Name	Scheduled Size	Remarks
Trees					
Small Ornamental Trees (Up to 6m ht.)					
AcB	1	Amelanchier canadensis 'Ballerina'	Ballerina Serviceberry	50mm cal.	WB, Staked
GbU	1	Ginkgo biloba 'Umbrella'	Globe Ginkgo	45mm cal.	WB, Staked
MrB	1	Malus 'Royal Beauty'	Royal Beauty Crab Apple	50mm cal.	WB, Staked
Perennials					
PvA	25	Sun Flowering perennials	Low Flowering Perennials	1 gallon Pot	60cm o.c.
PvB	35	Low Flowering Perennials	Medium to tall Flowering Perennials	1 gallon Pot	60cm o.c.
PvC	10	Calamagrostis acutifolia 'Karl Foerster'	Karl Foerster Feather Reed Grass	1 gallon Pot	80cm o.c.

CONTRACTOR TO REPORT ANY DISCREPANCIES FOUND BETWEEN PLAN & PLANT LIST PRIOR TO PLANTING

- LEGEND**
- EXISTING VEGETATION TO REMAIN
 - CRITICAL ROOT ZONE
 - TREE PROTECTION FENCE
 - ROPOSED PLANTING
 - PROPOSED PEASTONE MAINTENANCE EDGE
 - PROPOSED STANDARD PAVERS
 - SOIL VOLUME AREAS ID

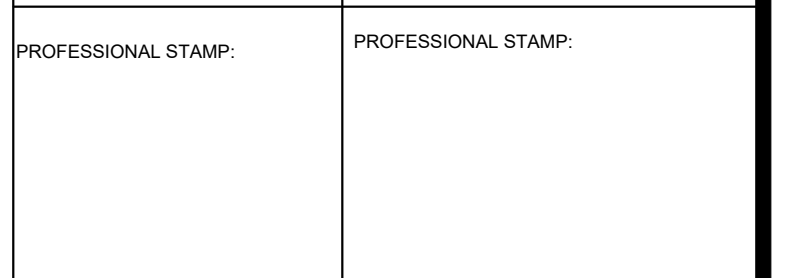
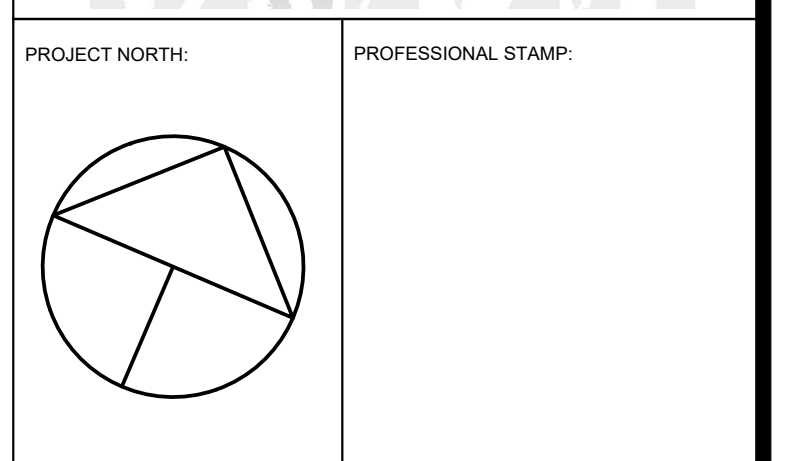


GENERAL NOTES

- All general site information and conditions compiled from existing plans, surveys and consultant's field notes. Report all discrepancies prior to any work. No responsibility is born by the Consultant for unknown subsurface conditions.
- The location of the utilities is approximate only, and the exact location should be determined by consulting the municipal authorities and utility companies concerned. The Contractor shall prove the location of utilities and shall be responsible for adequate protection from damage.
- All dimensions shown are to be verified on site prior to any construction. No deviations are to be made from the layouts as shown on this plan without prior consultation with the Landscape Architect and Owner.
- No other trees to be removed without prior approval by Landscape Architect.

No.	ISSUE	DATE
7		
6		
5		
4		
3		
2		
1	For final review	Mar. 23/23

SCALE: 1:100



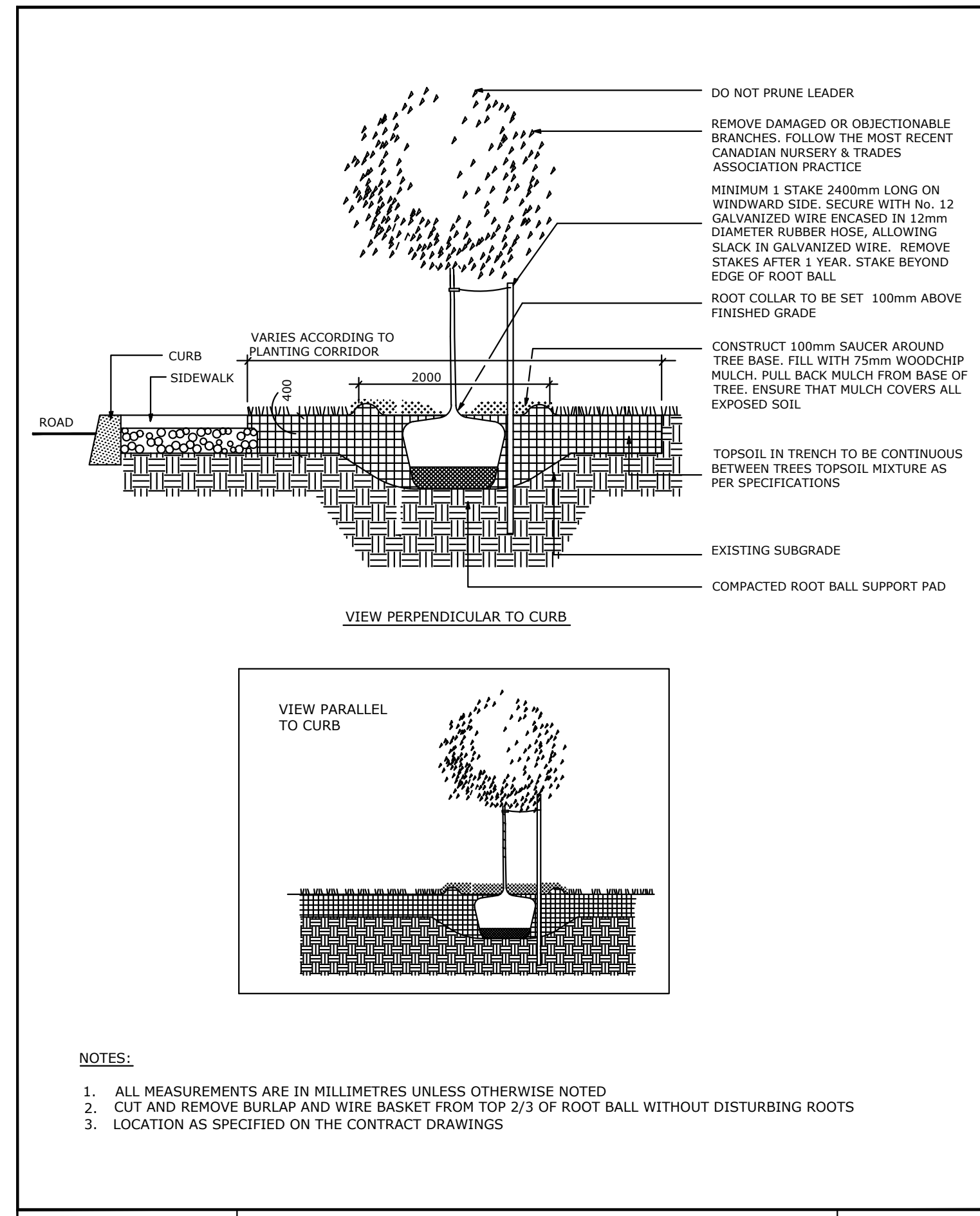
PROJECT:
266 Park Street OTTAWA ON

DRAWING:
LANDSCAPE PLAN

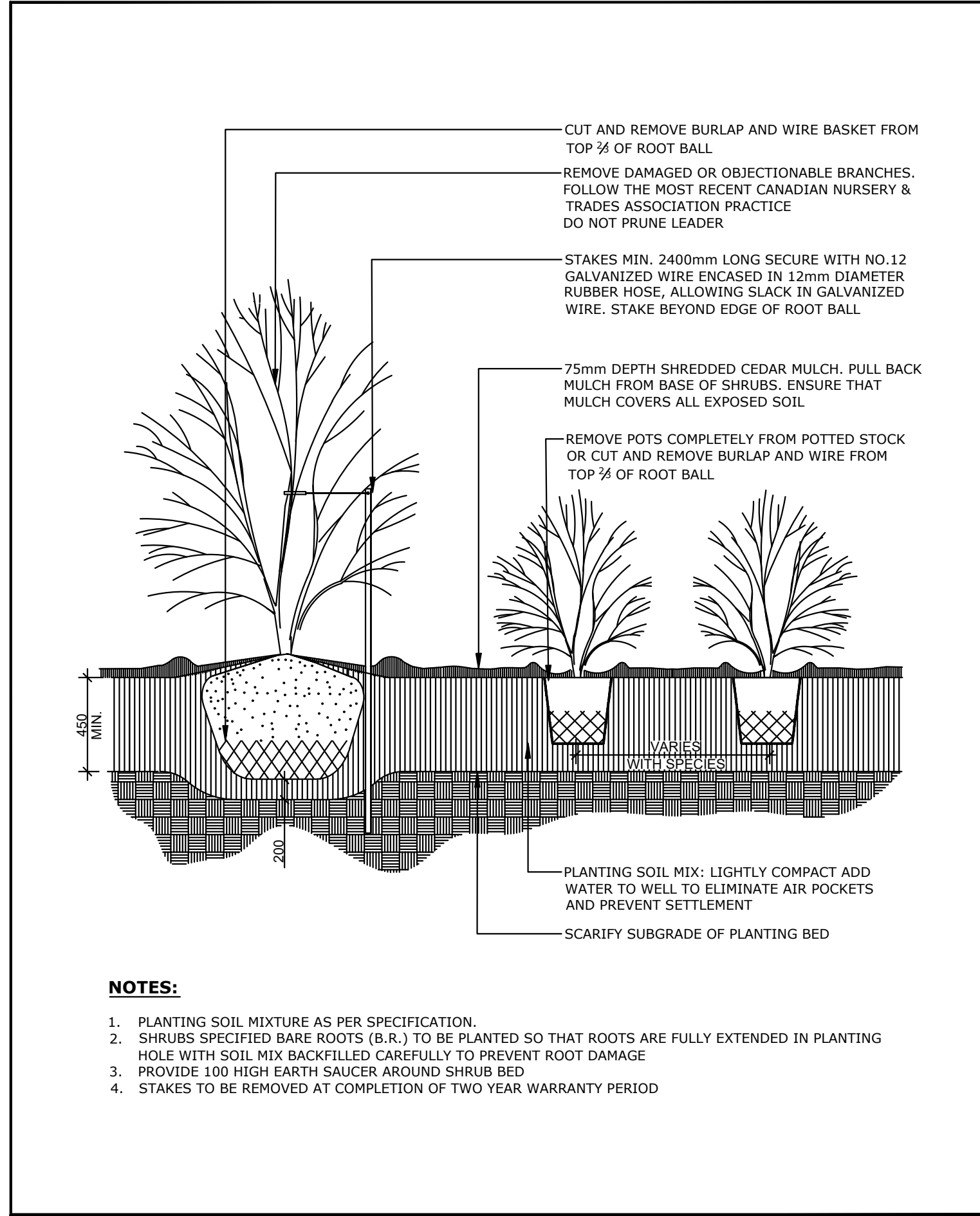
DESIGN: M.R.	DRAWING NO: L-01
DRAWN: M.M.	
CHECKED: M.R.	G-C NO:
PLOTTED:	

TREE SOIL VOLUME REQUIREMENTS:

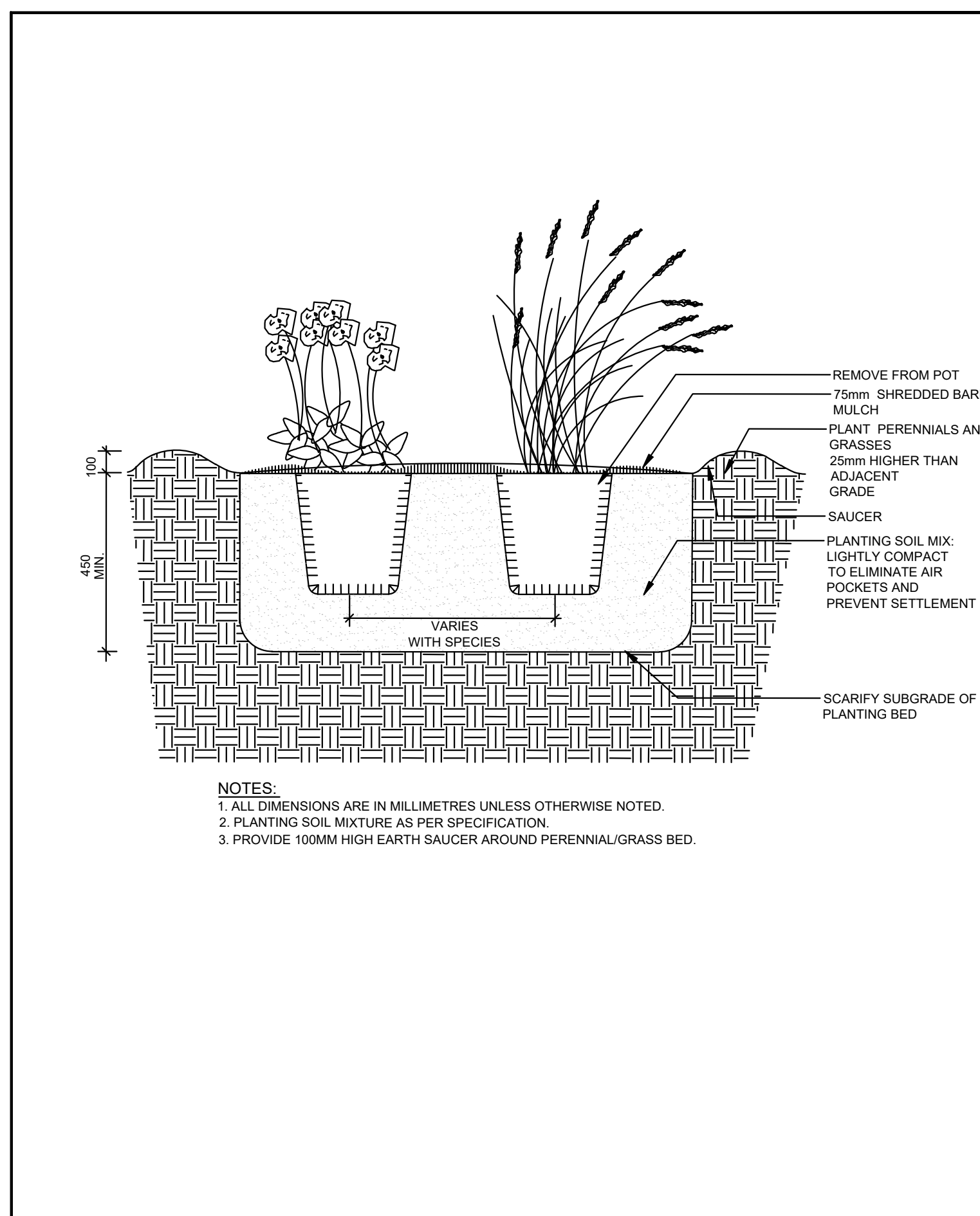
- STANDARD TREE SOIL VOLUMES QUANTITIES INCLUDE THE TOP 900-1000mm OF SOIL/EXISTING SUBSOIL LAYER TO CALCULATE TOTAL SOIL VOLUMES REQUIRED BY CITY OF OTTAWA FOR SUSTAINABLE TREE GROWTH. WHERE LARGER SOFT AREAS ARE AVAILABLE, THE TOP 400-500mm LAYER IS USED TO CALCULATE SOIL VOLUMES.
- WHERE EXISTING MATERIAL BELOW THE SPECIFIED TOPSOIL IS NOT CONDUSIVE TO TREE GROWTH, AN ADDITIONAL LAYER OF PLANTING MEDIUM IS TO BE INSTALLED BELOW SPECIFIED TOPSOIL DEPTH TO OBTAIN 900-1000mm SOIL VOLUME DEPTH REQUIRED.
- REFER TO SOIL VOLUME CHART AND PLANS FOR AREA WHERE TREE SOIL VOLUMES ARE REQUIRED.



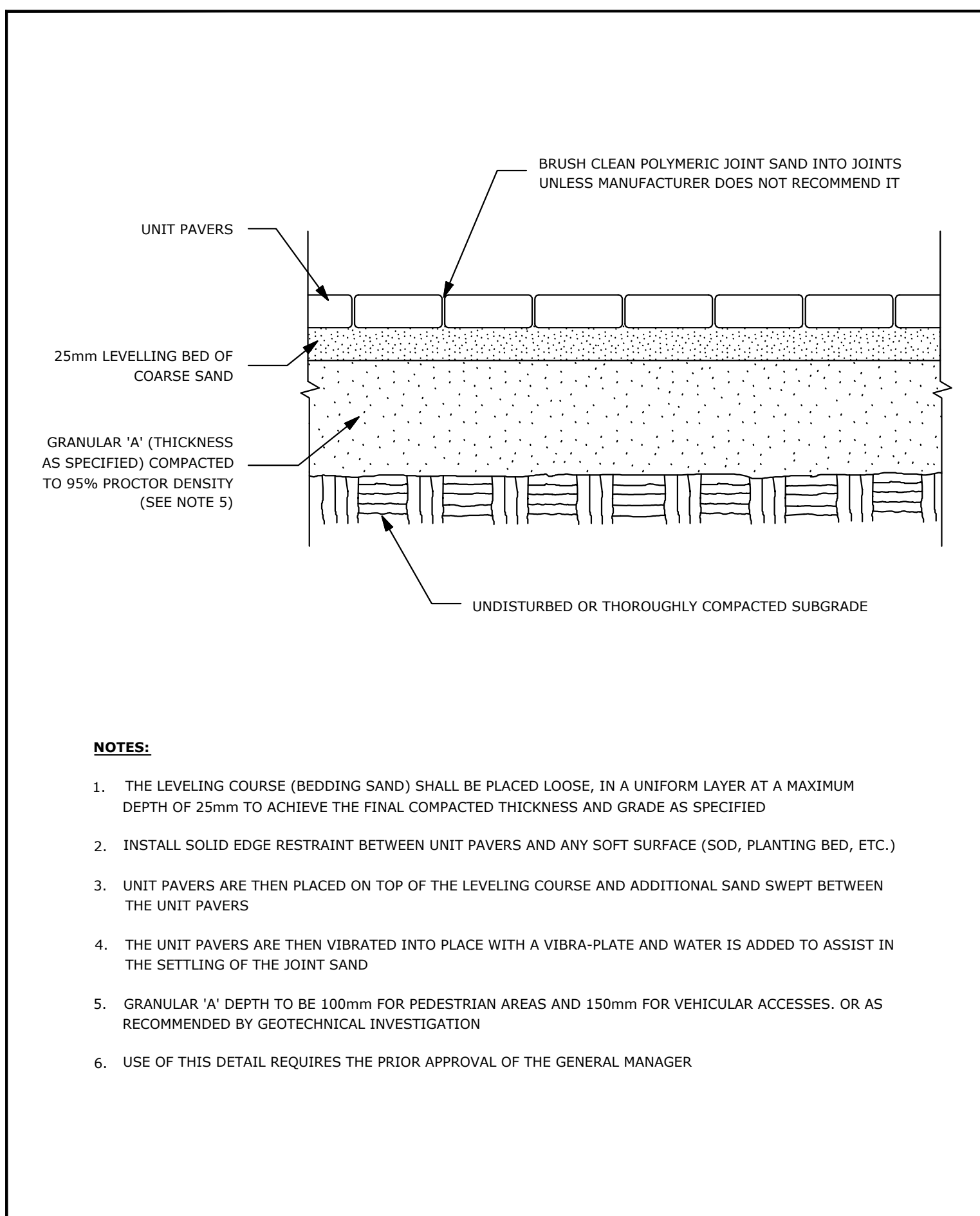
Ottawa TITLE: PLANTING TRENCH WELL DRAINED SOILS DATE: MAY 2001
 REV: JAN 2017
 DWG No: L1



Ottawa TITLE: CONTINUOUS SHRUB BED PLANTING DATE: FEB 2013
 REV: FEB 2014
 DWG No: L17



Ottawa TITLE: PERENNIAL AND ORNAMENTAL GRASS PLANTING DATE: JAN 2015
 REV:
 DWG No: L21



Ottawa TITLE: UNIT PAVING - ON GRANULAR BASE DATE: MAY 2001
 REV: FEB 2016
 DWG No: SC9

GENERAL NOTES

1. All general site information and conditions compiled from existing plans, surveys and consultant's field notes. Report all discrepancies prior to any work. No responsibility is born by the Consultant for unknown subsurface conditions.
2. The location of the utilities is approximate only, and the exact location should be determined by consulting the municipal authorities and utility companies concerned. The Contractor shall prove the location of utilities and shall be responsible for adequate protection from damage.
3. All dimensions shown are to be verified on site prior to any construction. No deviations are to be made from the layouts as shown on this plan without prior consultation with the Landscape Architect and Owner.
4. No other trees to be removed without prior approval by Landscape Architect.

7		
6		
5		
4		
3		
2		
1	For final review	Mar. 23/23
No.	ISSUE	DATE

SCALE: NTS



PROJECT NORTH:	PROFESSIONAL STAMP:
PROFESSIONAL STAMP:	PROFESSIONAL STAMP:

PROJECT:
**266 Park Street
 OTTAWA ON**

DRAWING:
LANDSCAPE DETAILS

DESIGN:	M.R.	DRAWING NO:	L-02
DRAWN:	M.M.	G-C NO:	
CHECKED:	M.R.		
PLOTTED:			