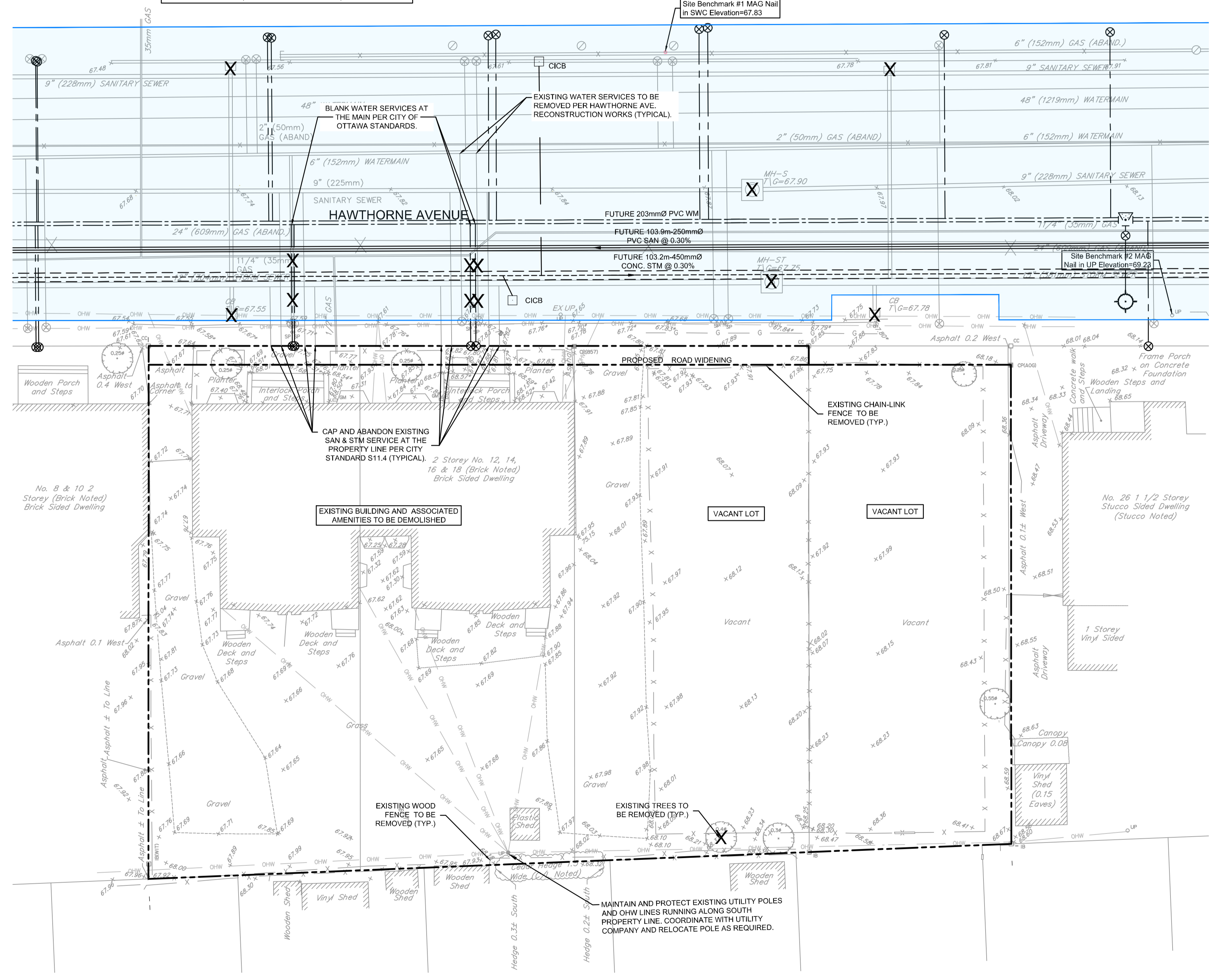


FUTURE UPGRADES TO THE MUNICIPAL INFRASTRUCTURE WITHIN THE R.O.W. ARE SHOWN WITHIN THE BLUE HATCHED AREA. EXISTING STORM AND SANITARY STRUCTURES (MANHOLES AND CATCHBASINS), SERVICE LATERALS AND OVERHEAD WIRES WILL BE REMOVED AND/OR RECONNECTED AS PART OF THE PROPOSED WORKS. REFER TO THE HAWTHORNE AVE. RECONSTRUCTION PROJECT PLANS (CITY CONTRACT CP000136) FOR DETAILS.



LEGEND

X	REMOVALS
FUTURE 203mmØ PVC WM	PROPOSED WATERMAIN (PER HAWTHORNE RECONSTRUCTION PROJECT)
HYD V&VB	PROPOSED HYDRANT c/w LEAD & VALVE & VALVE BOX (PER HAWTHORNE RECONSTRUCTION PROJECT)
FUTURE 103.9m-150mmØ PVC SAN @ 0.30%	PROPOSED SANITARY SEWER (PER HAWTHORNE RECONSTRUCTION PROJECT)
CICB	PROPOSED CATCHBASIN C/W LEAD (PER HAWTHORNE RECONSTRUCTION PROJECT)
FUTURE 103.2m-450mmØ CONC. STM @ 0.30%	PROPOSED STORM SEWER (PER HAWTHORNE RECONSTRUCTION PROJECT)
---	EXISTING CONCRETE CURB
V&VB	EXISTING VALVE & VALVE BOX
EX UP	EXISTING UTILITY POLE
○	EXISTING TREES / VEGETATION
MH-ST	EXISTING STORM MANHOLE & SEWER
CB	EXISTING CATCHBASIN C/W CATCHBASIN LEAD
MH-S	EXISTING SANITARY MANHOLE & SEWER

- GENERAL NOTES:**
- COORDINATE AND SCHEDULE ALL WORK WITH OTHER TRADES AND CONTRACTORS.
 - DETERMINE THE EXACT LOCATION, SIZE, MATERIAL AND ELEVATION OF ALL EXISTING UTILITIES PRIOR TO COMMENCING CONSTRUCTION. PROTECT AND ASSUME RESPONSIBILITY FOR ALL EXISTING UTILITIES WHETHER OR NOT SHOWN ON THIS DRAWING.
 - ALL ELEVATIONS ARE GEODETIC.

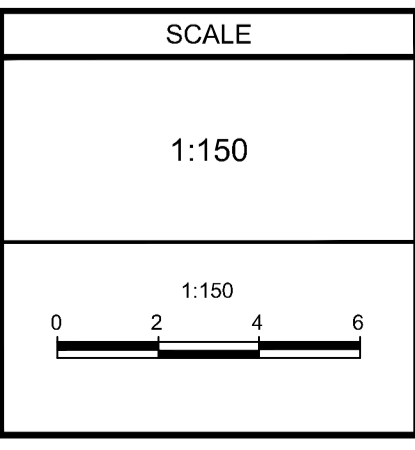
- BENCHMARK NOTES:**
- ELEVATIONS SHOWN ARE GEODETIC AND ARE REFERRED TO THE CGVD28 GEODETIC DATUM, AND ARE REFERRED TO CITY OF OTTAWA BENCHMARK OTT 25, HAVING AN ELEVATION OF 69.613.
 - IT IS THE RESPONSIBILITY OF THE USER OF THIS INFORMATION TO VERIFY THAT THE JOB BENCHMARK HAS NOT BEEN ALTERED OR DISTURBED AND THAT ITS RELATIVE ELEVATION AND DESCRIPTION AGREES WITH THE INFORMATION SHOWN ON THIS DRAWING.
 - TEMPORARY JOB BENCHMARK #1 DESCRIPTION IS LOCATED ON MAG NAIL IN CONCRETE SIDEWALK LOCATED APPROXIMATELY 18m NORTH OF THE NORTH PROPERTY BOUNDARY ALONG HAWTHORNE AVE. TEMPORARY BENCHMARK #2 DESCRIPTION IS MAG NAIL IN UTILITY POLE LOCATED ON BOULEVARD APPROXIMATELY 10m EAST FROM EAST PROPERTY BOUNDARY ALONG HAWTHORNE AVE. SEE TOPOGRAPHICAL PLAN OF SURVEY OF LOTS 2, 3, 4, 5 AND PART OF LOT 6, REGISTERED PLAN 220, CITY OF OTTAWA, SURVEYED BY ANNIS, O'SULLIVAN, VOLLEBEKK LTD.
 - A NEW TEMPORARY BENCHMARK MAY BE REQUIRED IF EXISTING BENCHMARKS ARE DISTURBED DURING THE HAWTHORNE AVE. RECONSTRUCTION PROJECT. ALTERNATIVELY, CONTRACTOR MAY NEED TO USE HAWTHORNE AVENUE RECONSTRUCTION PROJECT BENCHMARKS.

NOTE: THE POSITION OF ALL POLE LINES, CONDUITS, WATERMANS, SEWERS AND OTHER UNDERGROUND AND OVERGROUND UTILITIES AND STRUCTURES IS NOT NECESSARILY SHOWN ON THE CONTRACT DRAWINGS, AND WHERE SHOWN, THE ACCURACY OF THE POSITION OF SUCH UTILITIES AND STRUCTURES IS NOT GUARANTEED. BEFORE STARTING WORK, DETERMINE THE EXACT LOCATION OF ALL SUCH UTILITIES AND STRUCTURES AND ASSUME ALL LIABILITY FOR DAMAGE TO THEM.

OWNER INFORMATION
 JBPA Developments Inc.
 107 Pretoria Avenue
 Ottawa, ON, K1S 1W8

CONTACT: KEVIN FAGAN
 Tel: (613) 695-6767
 EMAIL: kfagan@jbpa.ca

No.	REVISION	DATE	BY
1.	ISSUED FOR SITE PLAN CONTROL APPROVAL	APRIL 12/23	FST



FOR REVIEW ONLY

DESIGN	CVZA
CHECKED	FST
DRAWN	ZA
CHECKED	FST
APPROVED	FST

NOVATECH
 Engineers, Planners & Landscape Architects
 Suite 200, 240 Michael Cowpland Drive
 Ottawa, Ontario, Canada K2M 1P6

Telephone (613) 254-9643
 Facsimile (613) 254-5867
 Website www.novatech-eng.com

LOCATION
 CITY OF OTTAWA
 12-24 HAWTHORNE AVENUE

DRAWING NAME
 EXISTING CONDITIONS AND REMOVALS PLAN

PROJECT No.	122152
REV	REV # 1
DRAWING No.	122152-REM
PLAN #	

M:\2023\122152\CAD\Civil\122152-REM.dwg, REM, Apr 12, 2023 - 12:24pm, zfh

D07-12-22