

LEGEND

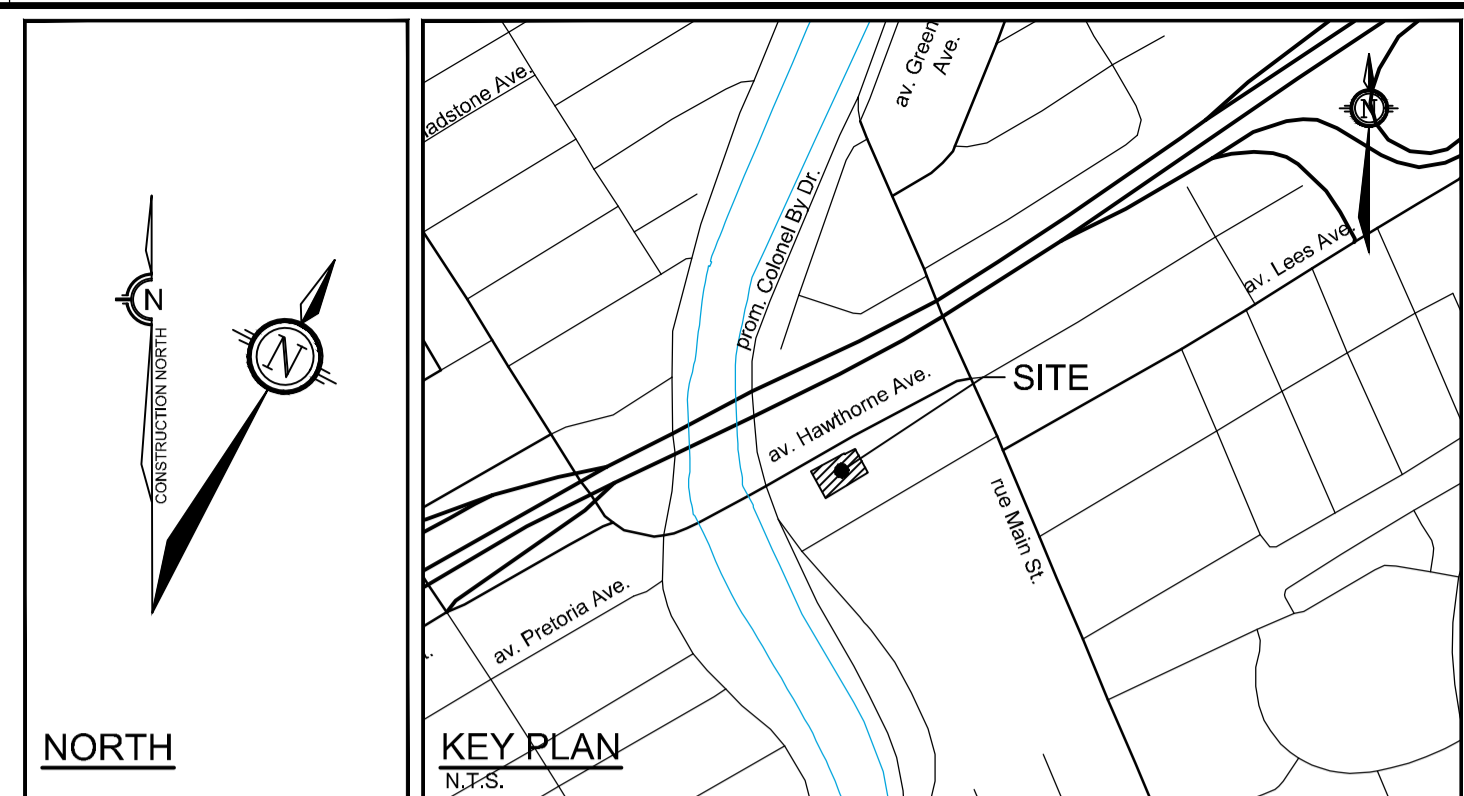
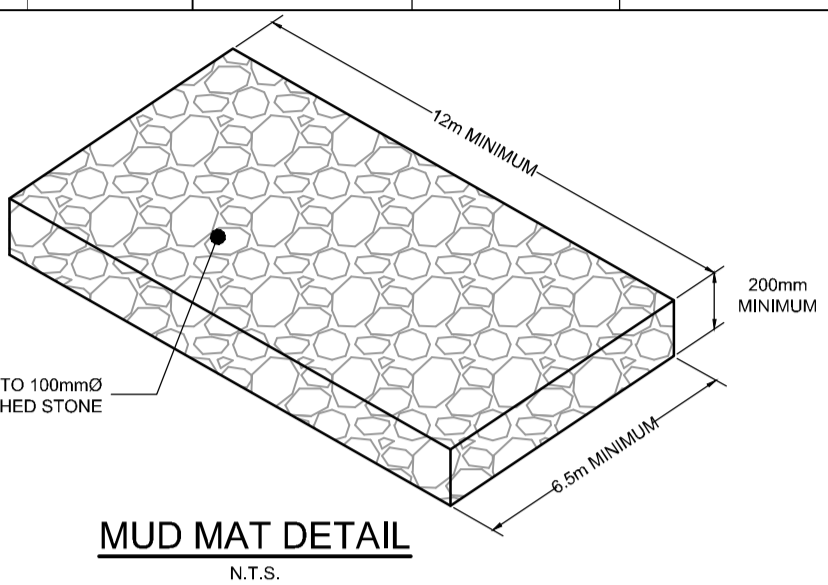
- PROPOSED ELEVATION
- EXISTING ELEVATION
- PROPOSED HAWTHORNE AVENUE RE-CONSTRUCTION DESIGN ELEVATION
- PROPOSED TOP OF RETAINING WALL ELEVATION
- PROPOSED TERRACE/FLOOR ELEVATION
- GRADE AND DIRECTION
- MAXIMUM 3:1 SIDESLOPE
- EMERGENCY OVERLAND FLOW ROUTE
- PROPOSED CATCHBASIN MANHOLE
- PROPOSED VALVE & VALVE BOX
- PROPOSED BARRIER CURB (PER SC1.1)
- PROPOSED DEPRESSED CURB (PER SC1.1)
- PROPOSED CURB INLET CATCHBASIN (PER HAWTHORNE RECONSTRUCTION PROJECT)
- PROPOSED HYDRANT c/w VALVE & VALVE BOX (PER HAWTHORNE RECONSTRUCTION PROJECT)
- MECHANICAL DECK DRAIN ABOVE U/G PARKING
- AREA DRAIN OUTSIDE OF U/G PARKING LIMITS
- PROPOSED FINISHED FLOOR ELEVATION
- PROPOSED UNDERSIDE OF FOOTING ELEVATION
- BUILDING ENTRANCE / EXIT
- REMOVALS
- PROPOSED SILT FENCING (OPSD 219.110)
- PROPOSED MUD MAT / CONSTRUCTION ENTRANCE
- PROPOSED STREET LIGHT

PAVEMENT STRUCTURE:

- NEW LIGHT DUTY PAVEMENT
 - 60mm SUPERPAVE LEVEL D 12.5mm
 - 150mm GRANULAR "A"
 - 300mm GRANULAR "B" TYPE II
 - ASPHALT GRADE PG 58-34
- NEW HEAVY DUTY PAVEMENT (PER HAWTHORNE RECONSTRUCTION PROJECT)
 - 60mm SUPERPAVE LEVEL D 12.5mm
 - 60mm SUPERPAVE LEVEL D 19mm
 - 150mm GRANULAR "A"
 - 350mm GRANULAR "B" TYPE II
 - ASPHALT GRADE PG 64-34

Erosion and Sediment Control Responsibilities:

ESC Measure	Symbol	Specification	Installation Responsibility	During Construction		After Construction Prior to Final Acceptance		After Final Acceptance
				Inspection/Maintenance Responsibility	Inspection Frequency	Approval to Remove	Removal Responsibility	Inspection/Maintenance Responsibility
Silt Fence	[Symbol]	OPSD 219.110	Developer's Contractor	Developer's Contractor	Weekly (as a minimum)	Consultant	Developer's Contractor	N/A
Filter Fabric	[Symbol]	Erosion and Sediment Control Notes	Developer's Contractor	Developer's Contractor	Weekly (as a minimum)	Consultant	Developer's Contractor	N/A
Mud Mat	[Symbol]	Drawing Details	Developer's Contractor	Developer's Contractor	Weekly (as a minimum)	Developer's Contractor	Developer's Contractor	N/A
Dust Control	[Symbol]	Erosion and Sediment Control Notes	Developer's Contractor	Developer's Contractor	Weekly (as a minimum)	Consultant	Developer's Contractor	N/A
Stabilized Material Stockpiling	[Symbol]	Erosion and Sediment Control Notes	Developer's Contractor	Developer's Contractor	Weekly (as a minimum)	Developer's Contractor	Developer's Contractor	N/A
Sediment Basin (for flows being pumped out of excavations)	[Symbol]	...	Developer's Contractor	Developer's Contractor	After Every Rainstorm	Developer's Contractor	Developer's Contractor	N/A



GENERAL NOTES:

- COORDINATE AND SCHEDULE ALL WORK WITH OTHER TRADES AND CONTRACTORS.
- DETERMINE THE EXACT LOCATION, SIZE, MATERIAL AND ELEVATION OF ALL EXISTING UTILITIES PRIOR TO COMMENCING CONSTRUCTION. PROTECT AND ASSUME RESPONSIBILITY FOR ALL EXISTING UTILITIES WHETHER OR NOT SHOWN ON THIS DRAWING.
- OBTAIN ALL NECESSARY PERMITS AND APPROVALS FROM THE CITY OF OTTAWA BEFORE COMMENCING CONSTRUCTION.
- BEFORE COMMENCING CONSTRUCTION OBTAIN AND PROVIDE PROOF OF COMPREHENSIVE, ALL RISK AND OPERATIONAL LIABILITY INSURANCE FOR \$5,000,000.00. INSURANCE POLICY TO NAME OWNERS, ENGINEERS AND ARCHITECTS AS COINSURED.
- COMPLETE ALL WORKS IN ACCORDANCE WITH THE MOST CURRENT CITY OF OTTAWA STANDARDS AND SPECIFICATIONS USING THE CURRENT GUIDELINES, BYLAWS AND STANDARDS INCLUDING MATERIALS OF CONSTRUCTION, DISINFECTION AND ALL RELEVANT REFERENCES TO OPSS, OPSD & AWWA GUIDELINES - ALL CURRENT VERSIONS AND AS AMENDED.
- RESTORE ALL DISTURBED AREAS ON-SITE AND OFF-SITE, INCLUDING TRENCHES AND SURFACES ON PUBLIC ROAD ALLOWANCES TO EXISTING CONDITIONS OR BETTER TO THE SATISFACTION OF THE CITY OF OTTAWA AND THE ENGINEER.
- REMOVE FROM SITE ALL EXCESS EXCAVATED MATERIAL, ORGANIC MATERIAL AND DEBRIS UNLESS OTHERWISE INSTRUCTED BY ENGINEER. EXCAVATE AND REMOVE FROM SITE ANY CONTAMINATED MATERIAL. ALL CONTAMINATED MATERIAL SHALL BE DISPOSED OF AT A LICENSED LANDFILL FACILITY.
- ALL ELEVATIONS ARE GEODETIC.
- REFER TO GEOTECHNICAL INVESTIGATION REPORT (58-JB-PA-RO, DATED AUGUST 04, 2022), PREPARED BY YURI MENDEZ ENGINEERING, FOR SUBSURFACE CONDITIONS, CONSTRUCTION RECOMMENDATIONS, AND GEOTECHNICAL INSPECTION REQUIREMENTS. THE GEOTECHNICAL CONSULTANT IS TO REVIEW ON-SITE CONDITIONS AFTER EXCAVATION PRIOR TO PLACEMENT OF THE GRANULAR MATERIAL.
- REFER TO ARCHITECT'S AND LANDSCAPE ARCHITECT'S DRAWINGS FOR BUILDING AND HARDSURFACE AREAS AND DIMENSIONS.
- REFER TO THE DEVELOPMENT SERVICING STUDY AND STORMWATER MANAGEMENT REPORT (R-2022-143) PREPARED BY NOVATECH.
- SAW CUT AND KEY GRIND ASPHALT AT ALL ROAD CUTS AND ASPHALT TIE IN POINTS AS PER CITY OF OTTAWA STANDARDS (R10).

GRADING NOTES:

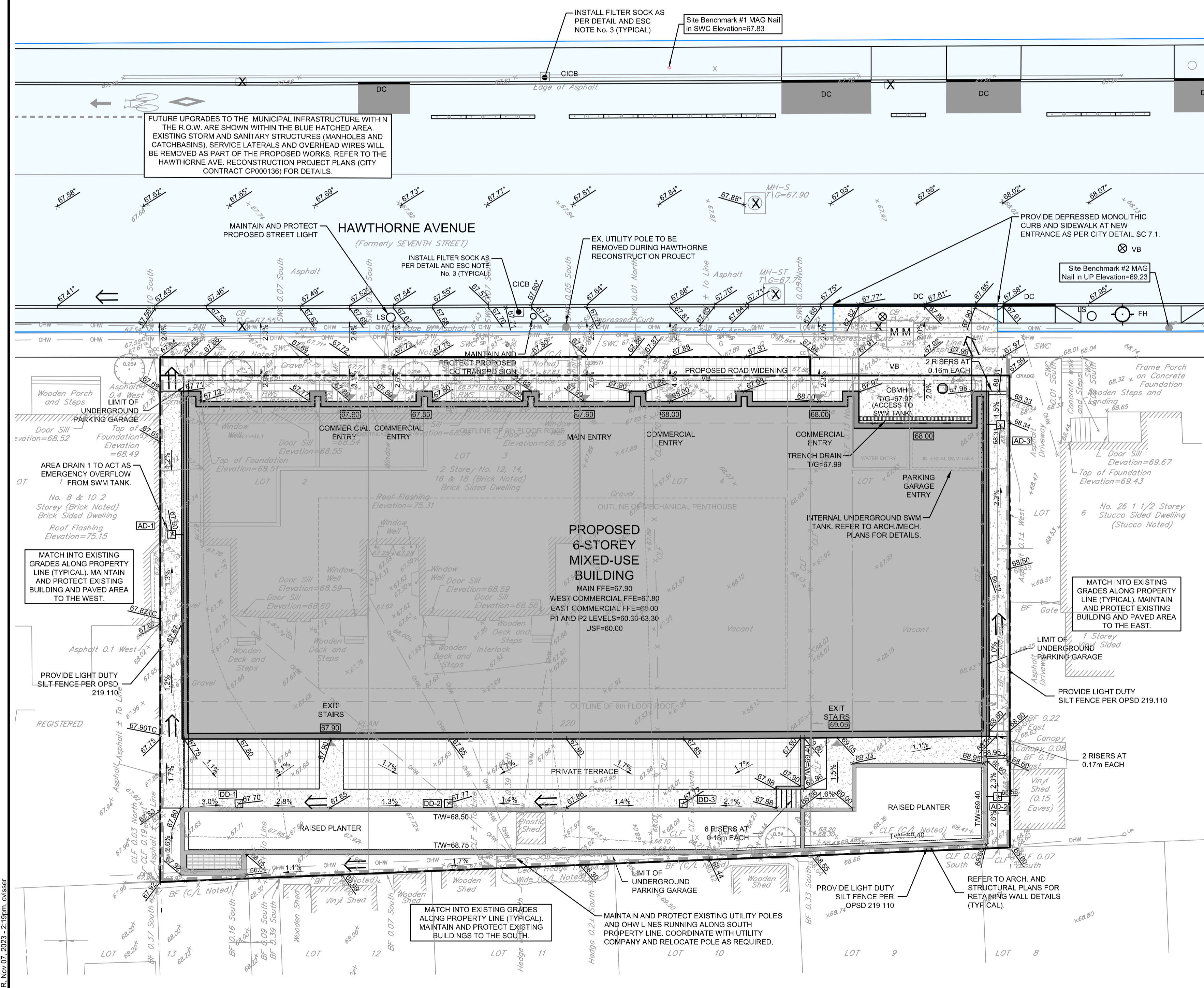
- ALL TOPSOIL, ORGANIC OR DELETERIOUS MATERIAL MUST BE ENTIRELY REMOVED FROM BENEATH THE PROPOSED PAVED AREAS AS DIRECTED BY THE SITE ENGINEER OR GEOTECHNICAL ENGINEER.
- EXPOSED SUBGRADES IN PROPOSED PAVED AREAS SHOULD BE PROOF ROLLED WITH A LARGE STEEL DRUM ROLLER AND INSPECTED BY THE GEOTECHNICAL ENGINEER PRIOR TO THE PLACEMENT OF GRANULARS.
- ANY SOFT AREAS EVIDENT FROM THE PROOF ROLLING SHOULD BE SUB-EXCAVATED AND REPLACED WITH SUITABLE MATERIAL THAT IS FROST COMPATIBLE WITH THE EXISTING SOILS AS RECOMMENDED BY THE GEOTECHNICAL ENGINEER.
- THE GRANULAR BASE SHOULD BE COMPACTED TO AT LEAST 98% OF THE STANDARD PROCTOR MAXIMUM DRY DENSITY VALUE. ANY ADDITIONAL GRANULAR FILL USED BELOW THE PROPOSED PAVEMENT SHOULD BE COMPACTED TO AT LEAST 95% OF THE STANDARD PROCTOR MAXIMUM DRY DENSITY VALUE.
- MINIMUM OF 2% GRADE FOR ALL GRASS AREAS UNLESS OTHERWISE NOTED.
- MAXIMUM TERRACING GRADE TO BE 3:1 UNLESS OTHERWISE NOTED.
- ALL GRADES BY CURBS ARE EDGE OF PAVEMENT GRADES UNLESS OTHERWISE INDICATED.
- ALL CURBS SHALL BE BARRIER CURB (130mm) UNLESS OTHERWISE NOTED AND CONSTRUCTED AS PER CITY OF OTTAWA STANDARDS (SC1.1).
- REFER TO LANDSCAPE PLAN FOR PLANTING AND OTHER LANDSCAPE FEATURE DETAILS.
- CONTRACTOR TO PROVIDE THE CONSULTANT WITH A GRADING PLAN INDICATING THE AS-BUILT ELEVATIONS OF ALL DESIGN GRADES SHOWN ON THIS PLAN.

EROSION AND SEDIMENT CONTROL NOTES:

- ALL EROSION AND SEDIMENT CONTROLS ARE TO BE INSTALLED TO THE SATISFACTION OF THE ENGINEER AND THE CITY OF OTTAWA. THEY ARE TO BE APPROPRIATE TO THE SITE CONDITIONS, PRIOR TO UNDERTAKING ANY SITE ALTERATIONS (FILLING, GRADING, REMOVAL OF VEGETATION, ETC.) AND DURING ALL PHASES OF SITE PREPARATION AND CONSTRUCTION. THESE PRACTICES ARE TO BE IMPLEMENTED IN ACCORDANCE WITH THE CURRENT BEST MANAGEMENT PRACTICES FOR EROSION AND SEDIMENT CONTROL, AND SHOULD INCLUDE AS A MINIMUM THOSE MEASURES INDICATED ON THE PLAN.
- A LIGHT DUTY SILT FENCE BARRIER WILL ALSO BE INSTALLED AROUND THE CONSTRUCTION AREA (WHERE APPLICABLE). THESE CONTROL MEASURES WILL REMAIN IN PLACE UNTIL CONSTRUCTION IS COMPLETE.
- TO PREVENT SURFACE EROSION FROM ENTERING ANY STORM SEWER SYSTEM DURING CONSTRUCTION, FILTER BAGS WILL BE PLACED UNDER GRATES OF NEARBY SURFACE CATCHBASINS AND MANHOLE STRUCTURES. TERRAFIX® ULTRA SILT SOCK (FILTER SOCK) IS TO BE USED AT THE OPENING OF ALL CURB INLET CATCHBASINS. A LIGHT DUTY SILT FENCE BARRIER WILL ALSO BE INSTALLED (PER OPSS 219.110) AROUND THE CONSTRUCTION AREA (WHERE APPLICABLE). IN AREAS WHERE SILT FENCING CANNOT BE INSTALLED PER OPSS 219.110 (i.e. HARD SURFACES), A FILTER SOCK SHALL BE SUBSTITUTED. THESE CONTROL MEASURES WILL REMAIN IN PLACE UNTIL CONSTRUCTION IS COMPLETE.
- THE SEDIMENT CONTROL MEASURES SHALL ONLY BE REMOVED WHEN, IN THE OPINION OF THE ENGINEER, THE MEASURES ARE NO LONGER REQUIRED. NO CONTROL MEASURES MAY BE PERMANENTLY REMOVED WITHOUT PRIOR AUTHORIZATION FROM THE ENGINEER.
- THE CONTRACTOR SHALL IMMEDIATELY REPORT TO THE ENGINEER ANY ACCIDENTAL DISCHARGES OF SEDIMENT MATERIAL INTO ANY STORM SEWER SYSTEM. APPROPRIATE RESPONSE MEASURES, INCLUDING ANY REPAIRS TO EXISTING CONTROL MEASURES OR THE IMPLEMENTATION OF ADDITIONAL CONTROL MEASURES, SHALL BE CARRIED OUT BY THE CONTRACTOR WITHOUT DELAY.
- THE CONTRACTOR ACKNOWLEDGES THAT FAILURE TO IMPLEMENT EROSION AND SEDIMENT CONTROL MEASURES MAY BE SUBJECT TO PENALTIES IMPOSED BY ANY APPLICABLE REGULATORY AGENCY.
- ROADWAYS ARE TO BE SWEEPED AS REQUIRED OR AS DIRECTED BY THE ENGINEER AND/OR MUNICIPALITY.
- THE CONTRACTOR SHALL ENSURE PROPER DUST CONTROL IS PROVIDED WITH THE APPLICATION OF WATER (AND IF REQUIRED, CALCIUM CHLORIDE) DURING DRY PERIODS.

BENCHMARK NOTES:

- ELEVATIONS SHOWN ARE GEODETIC AND ARE REFERRED TO THE CGVD28 GEODETIC DATUM, AND ARE REFERRED TO CITY OF OTTAWA BENCHMARK OTT 25, HAVING AN ELEVATION OF 69.613.
- IT IS THE RESPONSIBILITY OF THE USER OF THIS INFORMATION TO VERIFY THAT THE JOB BENCHMARK HAS NOT BEEN ALTERED OR DISTURBED AND THAT ITS RELATIVE ELEVATION AND DESCRIPTION AGREES WITH THE INFORMATION SHOWN ON THIS DRAWING.
- TEMPORARY JOB BENCHMARK #1 DESCRIPTION IS LOCATED ON MAG NAIL IN CONCRETE SIDEWALK LOCATED APPROXIMATELY 18m NORTH OF THE NORTH PROPERTY BOUNDARY ALONG HAWTHORNE AVE. TEMPORARY BENCHMARK #2 DESCRIPTION IS MAG NAIL IN UTILITY POLE LOCATED ON BOULEVARD APPROXIMATELY 10m EAST FROM EAST PROPERTY BOUNDARY ALONG HAWTHORNE AVE. SEE TOPOGRAPHICAL PLAN OF SURVEY OF LOTS 2, 3, 4, 5 AND PART OF LOT 6, REGISTERED PLAN 220, CITY OF OTTAWA, SURVEYED BY ANNIS, O'SULLIVAN, VOLLEBEKK LTD.
- A NEW TEMPORARY BENCHMARK MAY BE REQUIRED IF EXISTING BENCHMARKS ARE DISTURBED DURING THE HAWTHORNE AVE. RECONSTRUCTION PROJECT. ALTERNATIVELY, CONTRACTOR MAY NEED TO USE HAWTHORNE AVENUE RECONSTRUCTION PROJECT BENCHMARKS.

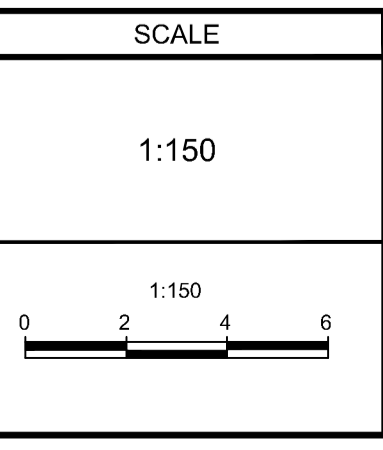


NOTE:
THE POSITION OF ALL POLE LINES, CONDUITS, WATERMANS, SEWERS AND OTHER UNDERGROUND AND OVERGROUND UTILITIES AND STRUCTURES IS NOT NECESSARILY SHOWN ON THE CONTRACT DRAWINGS, AND WHERE SHOWN, THE ACCURACY OF THE POSITION OF SUCH UTILITIES AND STRUCTURES IS NOT GUARANTEED. BEFORE STARTING WORK, DETERMINE THE EXACT LOCATION OF ALL SUCH UTILITIES AND STRUCTURES AND ASSUME ALL LIABILITY FOR DAMAGE TO THEM.

OWNER INFORMATION
JBPA Developments Inc.
107 Pretoria Avenue
Ottawa, ON, K1S 1W8

CONTACT: KEVIN FAGAN
Tel: (613) 695-6767
EMAIL: kfagan@jbpa.ca

No.	REVISION	DATE	BY
3.	REVISED PER CITY COMMENTS	NOV 7/23	FST
2.	REVISED PER CITY COMMENTS	JULY 26/23	FST
1.	ISSUED FOR SITE PLAN CONTROL APPROVAL	APRIL 12/23	FST



DESIGN	CV/ZA
CHECKED	FST
DRAWN	ZA
CHECKED	FST
APPROVED	FST



NOVATECH
Engineers, Planners & Landscape Architects
Suite 200, 240 Michael Cowpland Drive
Ottawa, Ontario, Canada K2M 1P6
Telephone: (613) 254-9643
Facsimile: (613) 254-5867
Website: www.novatech-eng.com

LOCATION
CITY OF OTTAWA
12-24 HAWTHORNE AVENUE

DRAWING NAME
GRADING AND EROSION & SEDIMENT CONTROL PLAN

PROJECT No. 122152
REV # 3
DRAWING No. 122152-GR
PLAN #19052

M:\2023\12152\CAD\CAD\12152-GR.dwg, GR, Nov 07, 2023, 2:10pm, cnsfstr

D07-12-23-0043