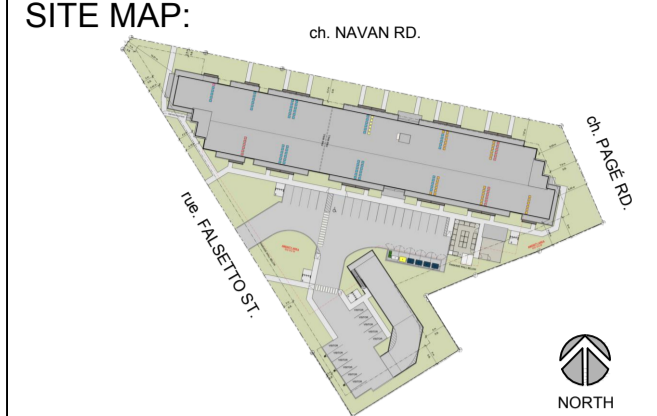


J. Selin
JOHN SEVIGNY C.E.T.
 MANAGER (A), DEVELOPMENT REVIEW EAST
 PLANNING, DEVELOPMENT & BUILDING SERVICES
 DEPARTMENT, CITY OF OTTAWA



APPROVED
 By sevignyo at 3:26 pm, Jun 21, 2024

PROJECT STATUS:
 ISSUED FOR COORDINATION

Revision Schedule

No.	Description	Revision Date
1	ISSUED FOR SITE PLAN REVIEW	2023-04-19
2	ISSUED FOR SITE PLAN SUBMISSION	2023-04-26
3	RE-ISSUED FOR SITE PLAN SUBMISSION	2023-07-14
4	ISSUED FOR SITE PLAN SUBMISSION	2023-09-11
5	ISSUED FOR SITE PLAN SUBMISSION	2023-11-16
6	RE-ISSUED FOR SITE PLAN SUBMISSION	2023-11-24
7	ISSUED FOR UDRP SUBMISSION	2024-01-31
8	RE-ISSUED FOR UDRP SUBMISSION	2024-04-12



TRADE CONTRACTORS SHALL VERIFY ALL DIMENSIONS AND REPORT ANY DISCREPANCIES OR INCONSISTENCIES TO SEYMOUR PACIFIC DEVELOPMENTS LTD., WITHOUT DELAY. FOR CLARIFICATION AND/OR CONFIRMATION, DO NOT SCALE DRAWINGS. DESIGNS REPRESENTED AND DRAWINGS USED AS INSTRUMENTS OF SERVICE SHALL REMAIN THE COPYRIGHT AND PROPERTY OF SEYMOUR PACIFIC DEVELOPMENTS LTD. ANY REPRODUCTION OR USE FOR ANY PURPOSE OTHER THAN THAT AUTHORIZED BY SEYMOUR PACIFIC DEVELOPMENTS LTD. IS PROHIBITED.

CONTRACTORS SHALL REMAIN FAMILIAR WITH, SHALL REFER TO, AND SHALL PERFORM IN ACCORDANCE WITH LOCAL LAWS, REGULATIONS AND BUILDING CODES. CONTRACTORS SHALL MAINTAIN GOOD INDUSTRY BUILDING AND SAFETY PRACTICES CONSISTENT WITH THE CONTRACT INTENT AND THE REQUIREMENTS OF JURISDICTIONAL AUTHORITIES.

ADDITIONAL CLAIMS AND COSTS RELATED TO NON-MATERIAL CHANGES WILL NOT BE ACCEPTED BY SEYMOUR PACIFIC DEVELOPMENTS LTD. NON-MATERIAL CHANGES ARE DEEMED TO BE PLAN CHANGES OR SPECIFICATION ADJUSTMENTS THAT DO NOT SUBSTANTIALLY AFFECT THE VALUE, TIME, COST AND QUALITY OF CONSTRUCTION.

CONTRACTORS SHALL MAKE EVERY REASONABLE EFFORT TO MAINTAIN SCHEDULE TARGETS AND PROVIDE GOOD EFFICIENCY, PROGRESS, WORKMANSHIP AND QUALITY TOWARD DEFICIENCY-FREE RESULTS.

PROJECT NAME:
 RHYTHM APARTMENTS

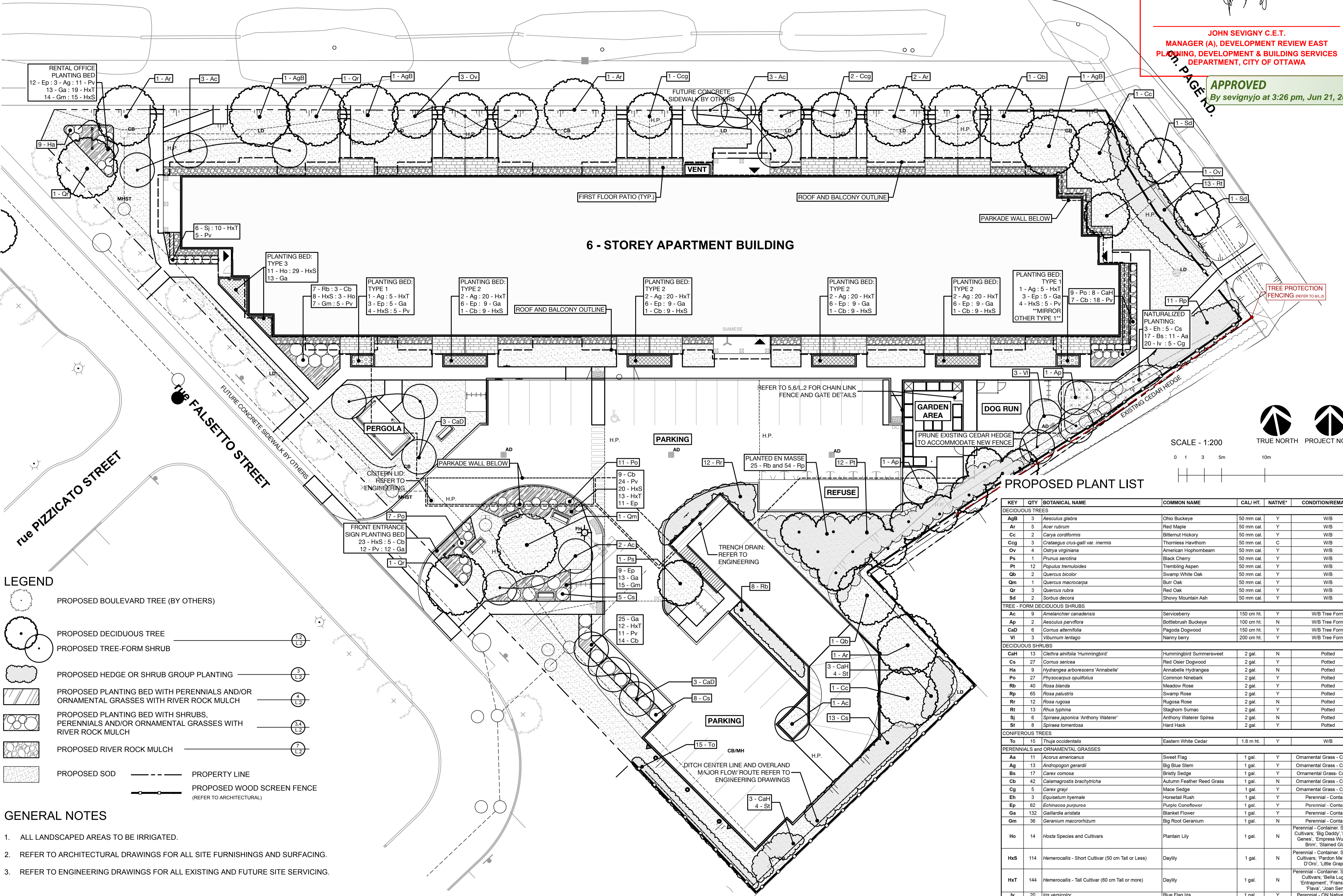
PROJECT NUMBER:
 CITY OF OTTAWA:

ADDRESS:
 3080 NAVAN ROAD
 OTTAWA, ON

DRAWING TITLE:
LANDSCAPE PLAN

DRAWN BY: K. SELIN
 CHECKED BY: K. CERVENY
 DATE: 2024-04-12
 SCALE: 1:200
 DRAWING #: **L.1**

6 - STOREY APARTMENT BUILDING

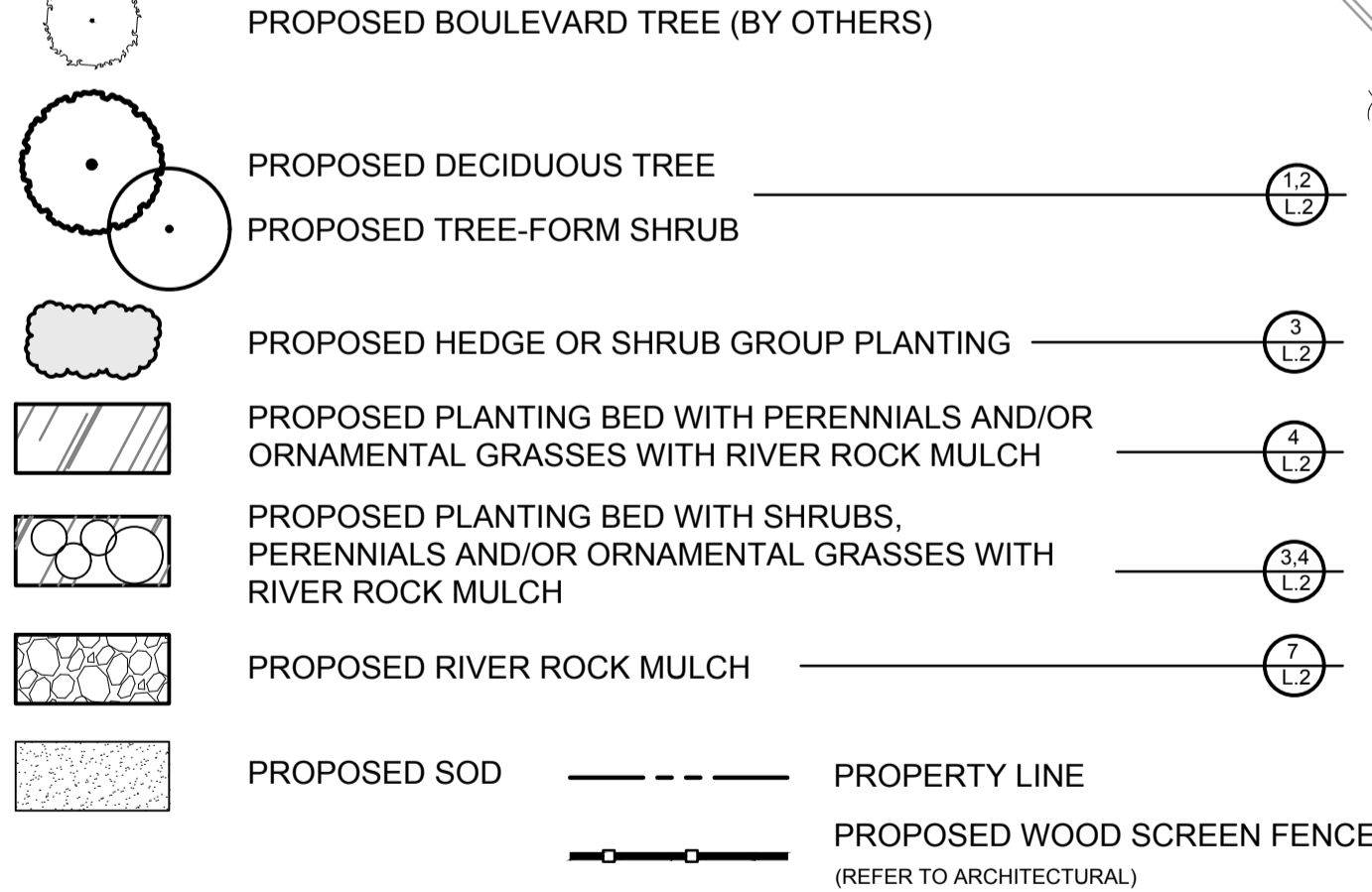


PROPOSED PLANT LIST

KEY	QTY	BOTANICAL NAME	COMMON NAME	CAL/ HT.	NATIVE*	CONDITION/REMARKS
DECIDUOUS TREES						
AgB	3	<i>Aesculus glabra</i>	Ohio Buckeye	50 mm cal.	Y	WB
Ar	5	<i>Acer rubrum</i>	Red Maple	50 mm cal.	Y	WB
Cc	2	<i>Carya cordiformis</i>	Bitternut Hickory	50 mm cal.	Y	WB
Ccg	3	<i>Crataegus crus-galli var. inermis</i>	Thornless Hawthorn	50 mm cal.	C	WB
Ov	4	<i>Ostrya virginiana</i>	American Hophornbeam	50 mm cal.	Y	WB
Ps	1	<i>Prunus serotina</i>	Black Cherry	50 mm cal.	Y	WB
Pt	12	<i>Populus tremuloides</i>	Trembling Aspen	50 mm cal.	Y	WB
Qb	2	<i>Quercus bicolor</i>	Swamp White Oak	50 mm cal.	Y	WB
Qm	1	<i>Quercus macrocarpa</i>	Burr Oak	50 mm cal.	Y	WB
Qr	3	<i>Quercus rubra</i>	Red Oak	50 mm cal.	Y	WB
Sd	2	<i>Sorbus decora</i>	Showy Mountain Ash	50 mm cal.	Y	WB
TREE - FORM DECIDUOUS SHRUBS						
AC	9	<i>Amelanchier canadensis</i>	Serviceberry	150 cm ht.	Y	WB Tree Form
Ap	2	<i>Aesculus parviflora</i>	Bottlebrush Buckeye	100 cm ht.	N	WB Tree Form
CaD	6	<i>Cornus alternifolia</i>	Pagoda Dogwood	150 cm ht.	Y	WB Tree Form
Vi	3	<i>Viburnum lentago</i>	Nanny berry	200 cm ht.	Y	WB Tree Form
DECIDUOUS SHRUBS						
CaH	13	<i>Clethra alnifolia</i> 'Hummingbird'	Hummingbird Summersweet	2 gal.	N	Potted
Cs	27	<i>Cornus sericea</i>	Red Osier Dogwood	2 gal.	Y	Potted
Ha	9	<i>Hydrangea arborescens</i> 'Annabelle'	Annabelle Hydrangea	2 gal.	N	Potted
Po	27	<i>Physocarpus opulifolius</i>	Common Ninebark	2 gal.	Y	Potted
Rb	40	<i>Rosa blanda</i>	Meadow Rose	2 gal.	Y	Potted
Rp	65	<i>Rosa palustris</i>	Swamp Rose	2 gal.	Y	Potted
Rr	12	<i>Rosa rugosa</i>	Rugosa Rose	2 gal.	N	Potted
Rt	13	<i>Rhus typhina</i>	Staghorn Sumac	2 gal.	Y	Potted
Sj	6	<i>Spiraea japonica</i> 'Anthony Waterer'	Anthony Waterer Spirea	2 gal.	N	Potted
St	8	<i>Spiraea tomentosa</i>	Hard Hack	2 gal.	Y	Potted
CONIFEROUS TREES						
To	15	<i>Thuja occidentalis</i>	Eastern White Cedar	1.8 m ht.	Y	WB
PERENNIALS and ORNAMENTAL GRASSES						
Aa	11	<i>Acorus americanus</i>	Sweet Flag	1 gal.	Y	Ornamental Grass - Container
Ag	13	<i>Andropogon gerardii</i>	Big Blue Stem	1 gal.	Y	Ornamental Grass - Container
Bs	17	<i>Carex comosa</i>	Bristly Sedge	1 gal.	Y	Ornamental Grass - Container
Cb	42	<i>Calamagrostis brachytricha</i>	Autumn Feather Reed Grass	1 gal.	N	Ornamental Grass - Container
Cg	5	<i>Carex grayi</i>	Mace Sedge	1 gal.	Y	Ornamental Grass - Container
Eh	3	<i>Equisetum hyemale</i>	Horsetail Rush	1 gal.	Y	Perennial - Container
Ep	62	<i>Echinacea purpurea</i>	Purple Coneflower	1 gal.	Y	Perennial - Container
Ga	132	<i>Gallardia aristata</i>	Blanket Flower	1 gal.	Y	Perennial - Container
Gm	36	<i>Geranium macrorrhizum</i>	Big Root Geranium	1 gal.	N	Perennial - Container
Ho	14	<i>Hosta</i> Species and Cultivars	Plantain Lily	1 gal.	N	Perennial - Container, Suggested Cultivars: 'Big Daddy', 'Designer Genes', 'Empress Wu', 'Wide Brim', 'Stained Glass'
HxS	114	<i>Hemerocallis - Short Cultivar</i> (50 cm Tall or Less)	Daylily	1 gal.	N	Perennial - Container, Suggested Cultivars: 'Pardon Me', 'Stella D'Oro', 'Little Grapette'
HxT	144	<i>Hemerocallis - Tall Cultivar</i> (60 cm Tall or more)	Daylily	1 gal.	N	Perennial - Container, Suggested Cultivars: 'Beta Lugosa', 'Entrapment', 'Frans Hals', 'Flava', 'Joan Senior'
Iv	20	<i>Iris versicolor</i>	Blue Flag Iris	1 gal.	Y	Perennial - ON Native - Cont.
Pv	96	<i>Potentilla verna nana</i>	Alpine Cinquefoil	9 pt.	N	Perennial - Container

*Native: Y= Yes, N= No, C= Cultivar of Native Species

LEGEND

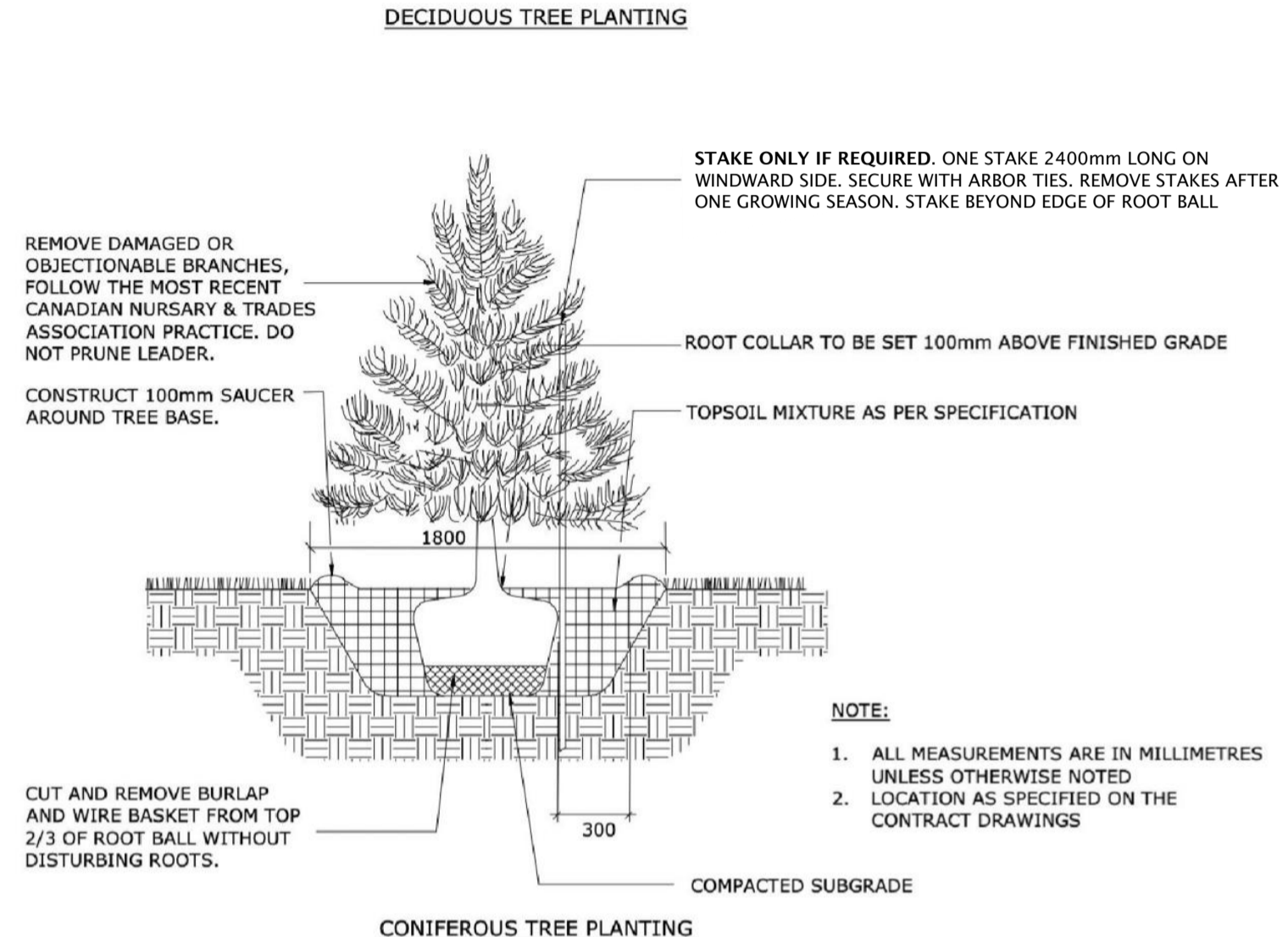
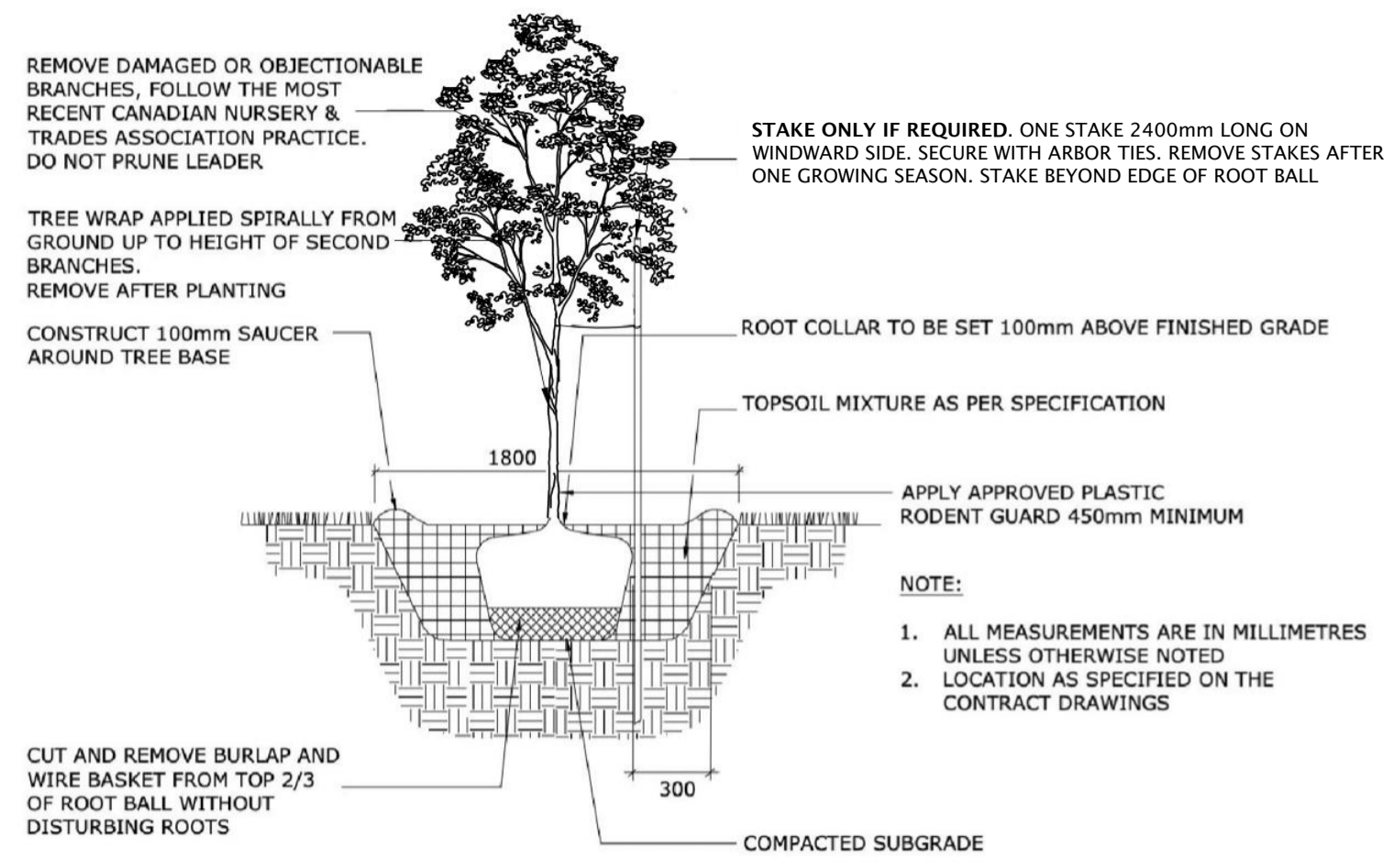


GENERAL NOTES

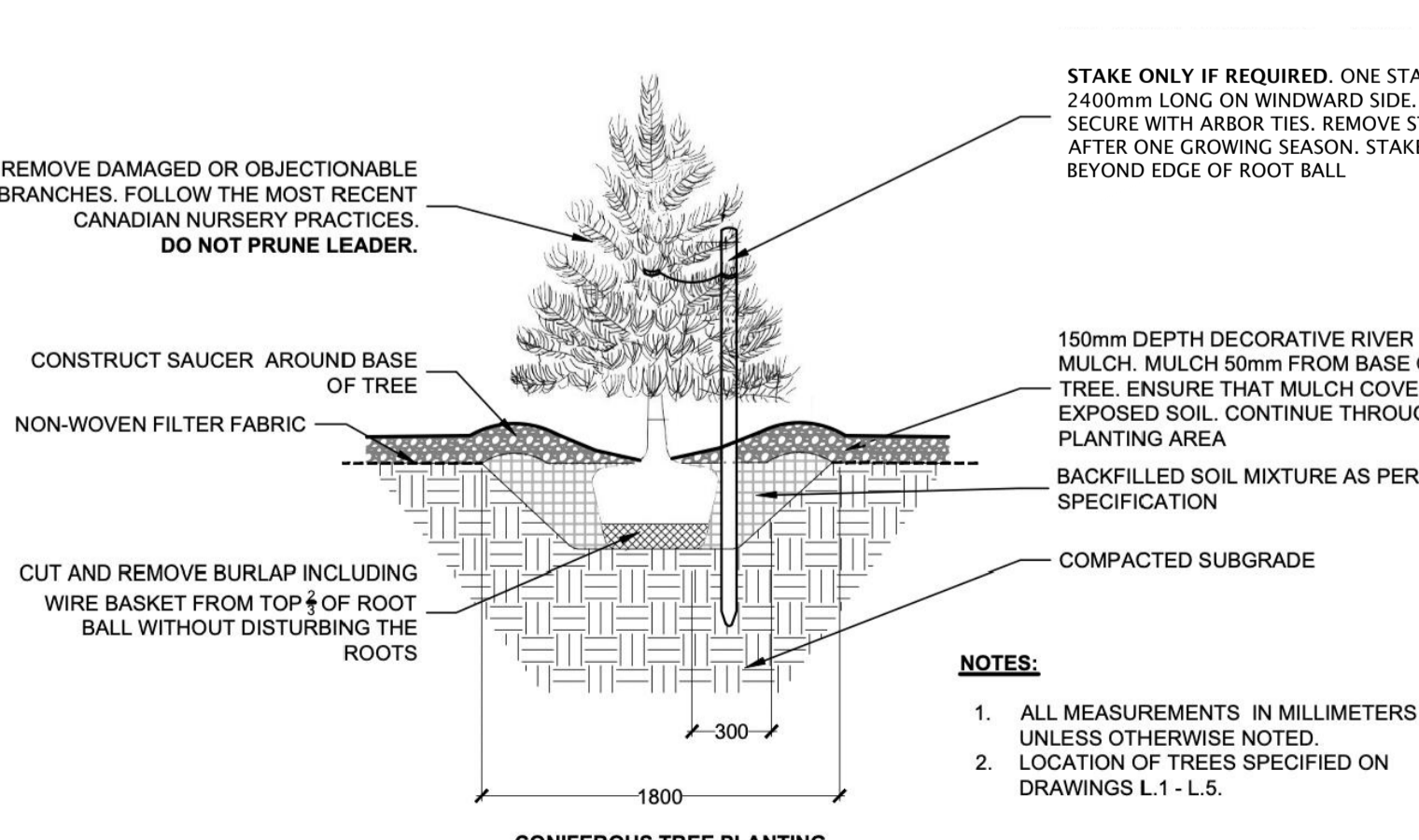
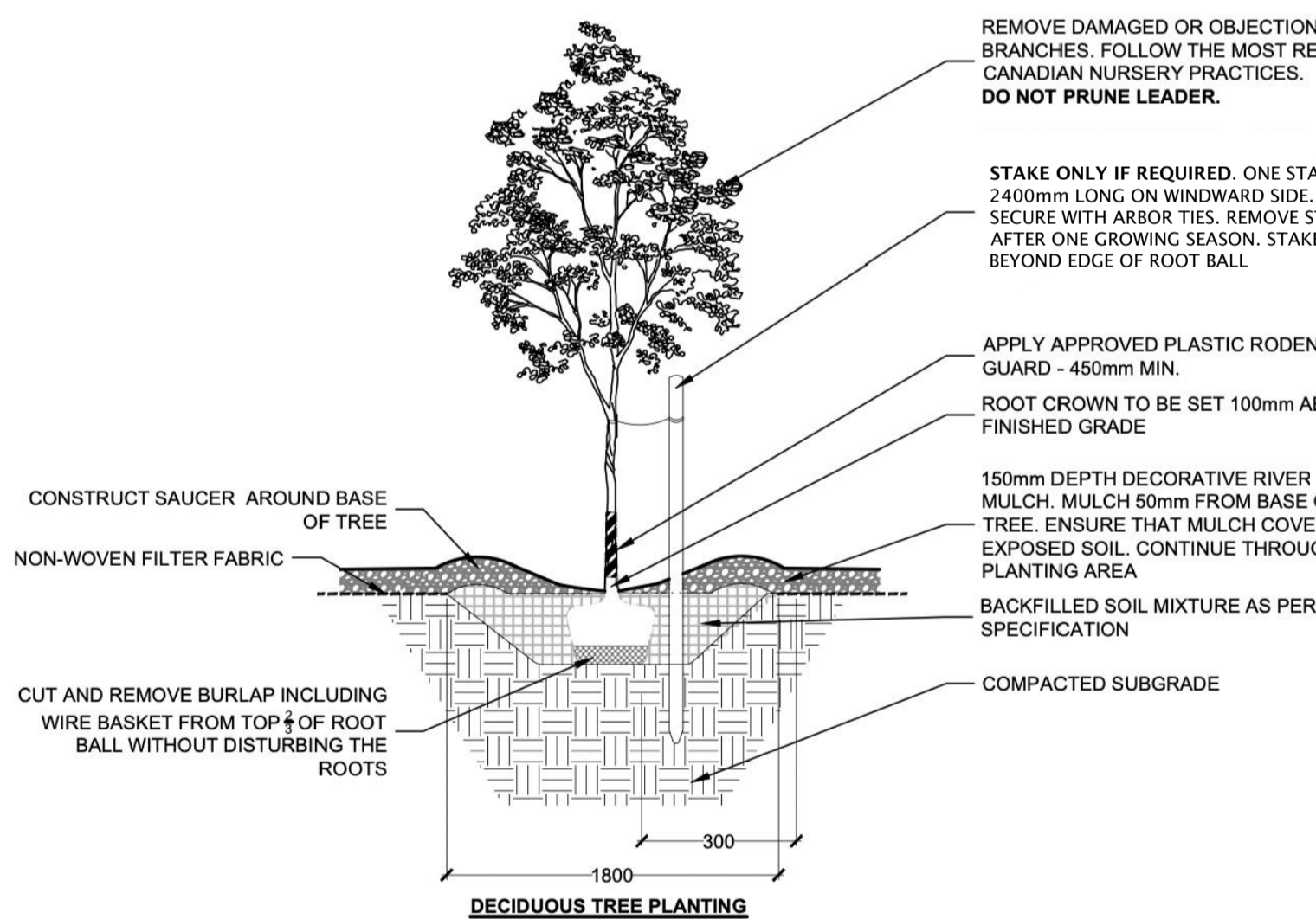
- ALL LANDSCAPED AREAS TO BE IRRIGATED.
- REFER TO ARCHITECTURAL DRAWINGS FOR ALL SITE FURNISHINGS AND SURFACING.
- REFER TO ENGINEERING DRAWINGS FOR ALL EXISTING AND FUTURE SITE SERVICING.

PLANTING NOTES

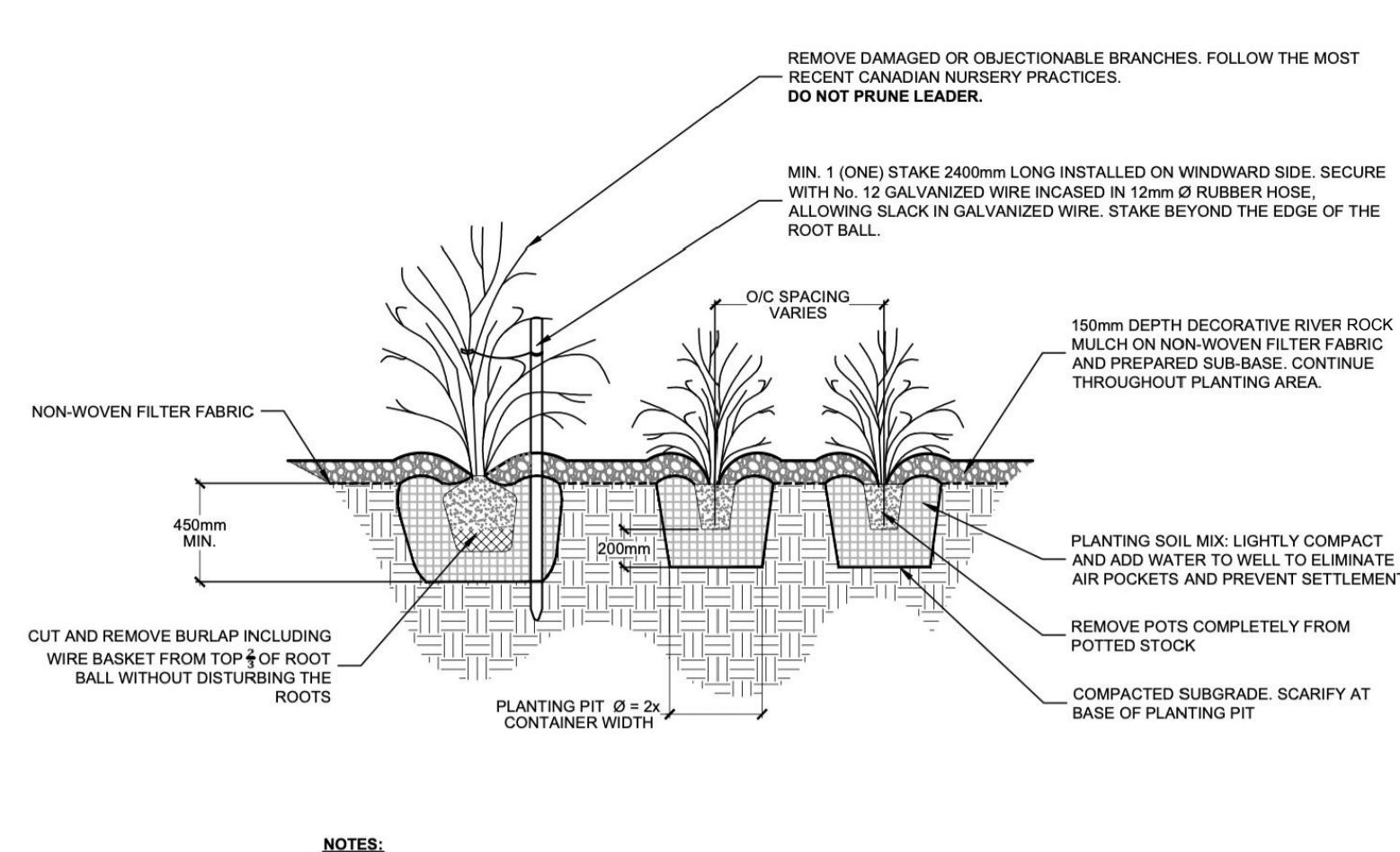
- CONTRACTOR TO VERIFY LOCATION OF ALL UTILITIES PRIOR TO EXCAVATION.
- LOCATION OF ALL PLANT MATERIAL TO BE STAKED BY THE CONTRACTOR AND VERIFIED IN THE FIELD BY THE PROJECT MANAGER PRIOR TO THE EXCAVATION OF TREE PITS, SHRUBS AND PERENNIALS
- ALL PLANT MATERIAL SHALL BE NURSERY GROWN STOCK UNLESS OTHERWISE NOTED.
- DECIDUOUS TREES TO HAVE A MINIMUM 1800 CLEAR STEM ABOVE GRADE.
- ALL PLANT MATERIAL SHALL BE WARRANTED FOR TWO YEARS FROM THE DATE OF PERFORMANCE ACCEPTANCE AS DETERMINED BY THE PROJECT MANAGER.
- CONTRACTOR TO MAKE GOOD ALL EXISTING AREAS DAMAGED BY HIS OR HER WORK TO THE SATISFACTION OF THE PROJECT MANAGER.
- ANY PROPOSED PLANT MATERIAL SUBSTITUTIONS SHALL BE MADE WITH PLANTS OF EQUIVALENT OVERALL FORM, HEIGHT, HABIT, FLOWER, LEAF, COLOUR AND CULTURE AND ONLY AFTER WRITTEN APPROVAL FROM THE PROJECT MANAGER.
- ALL LANDSCAPE CONSIDERATIONS INCLUDING PROPOSED AND CITY APPROVED TREES ARE NOT SUBJECT TO THE CITY OF OTTAWA TREE PLANTING IN SENSITIVE MARINE CLAY SOILS (2017 GUIDELINES) IN ACCORDANCE WITH PATERSON GROUP - GEOTECHNICAL INVESTIGATION REPORT PG6527-1 REVISION 2 DATED MAY 17, 2023



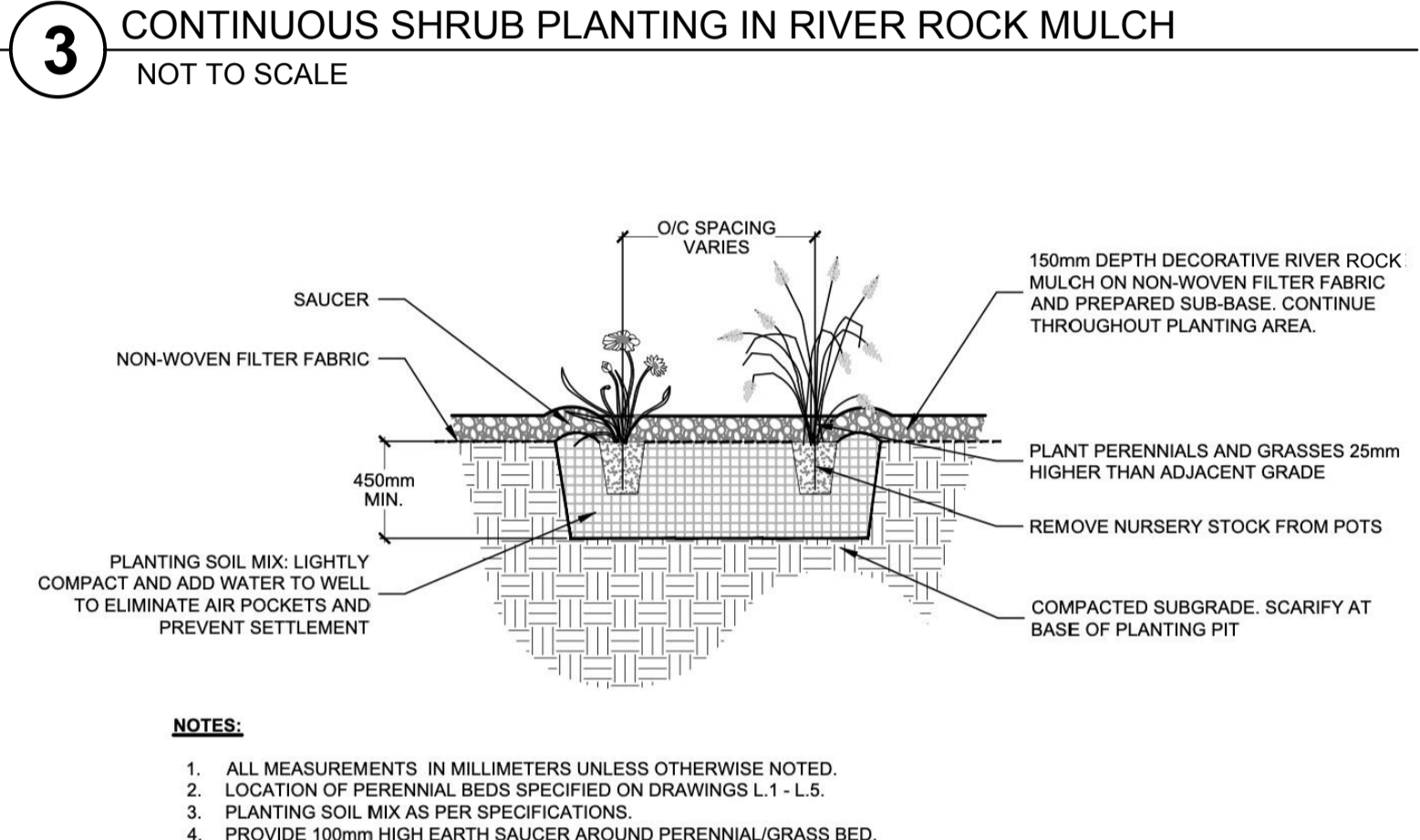
1 DECIDUOUS AND CONIFEROUS TREE PLANTING IN GRASSED AREAS
NOT TO SCALE



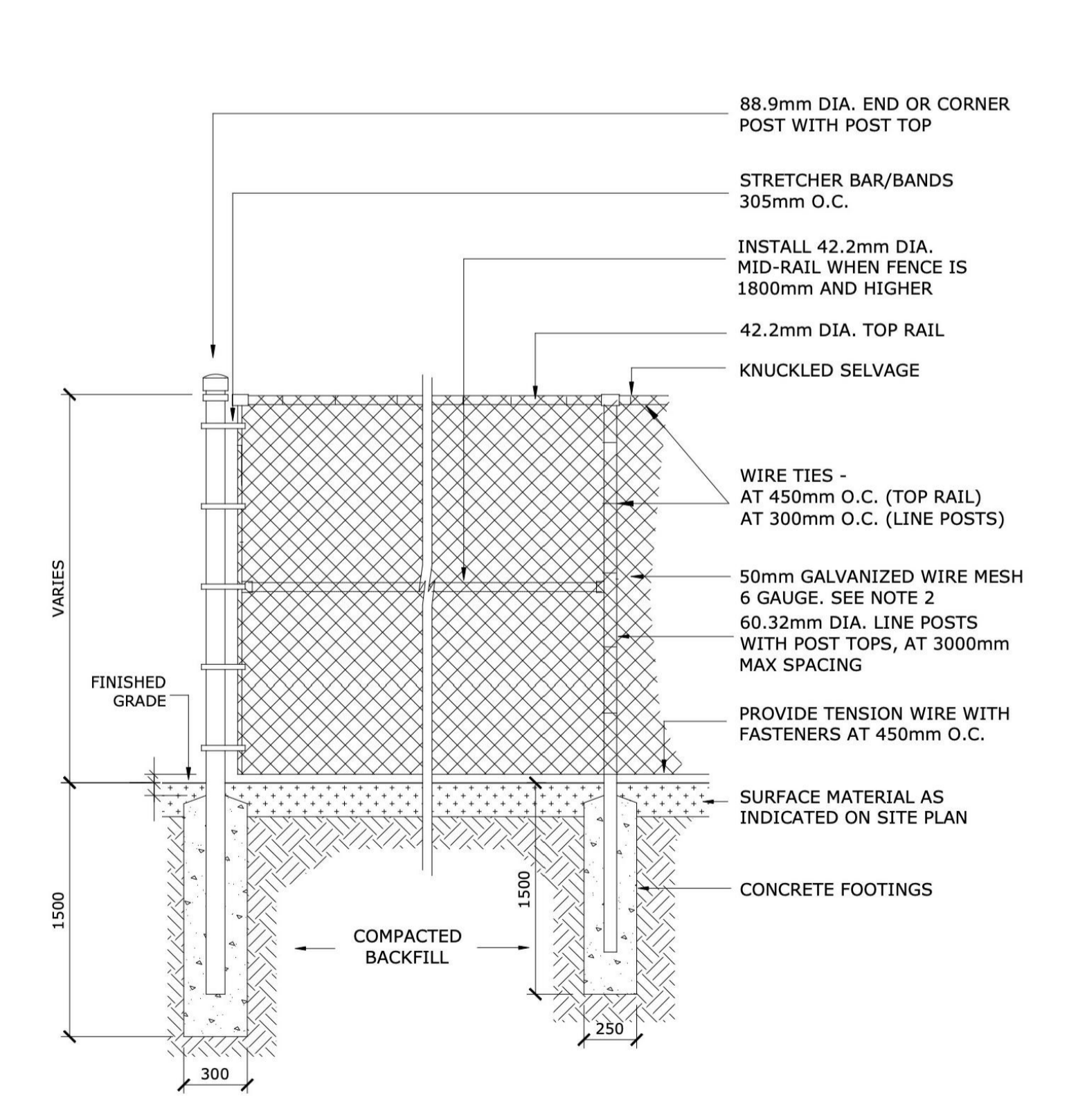
2 DECIDUOUS AND CONIFEROUS TREE PLANTING IN RIVER ROCK MULCH
NOT TO SCALE



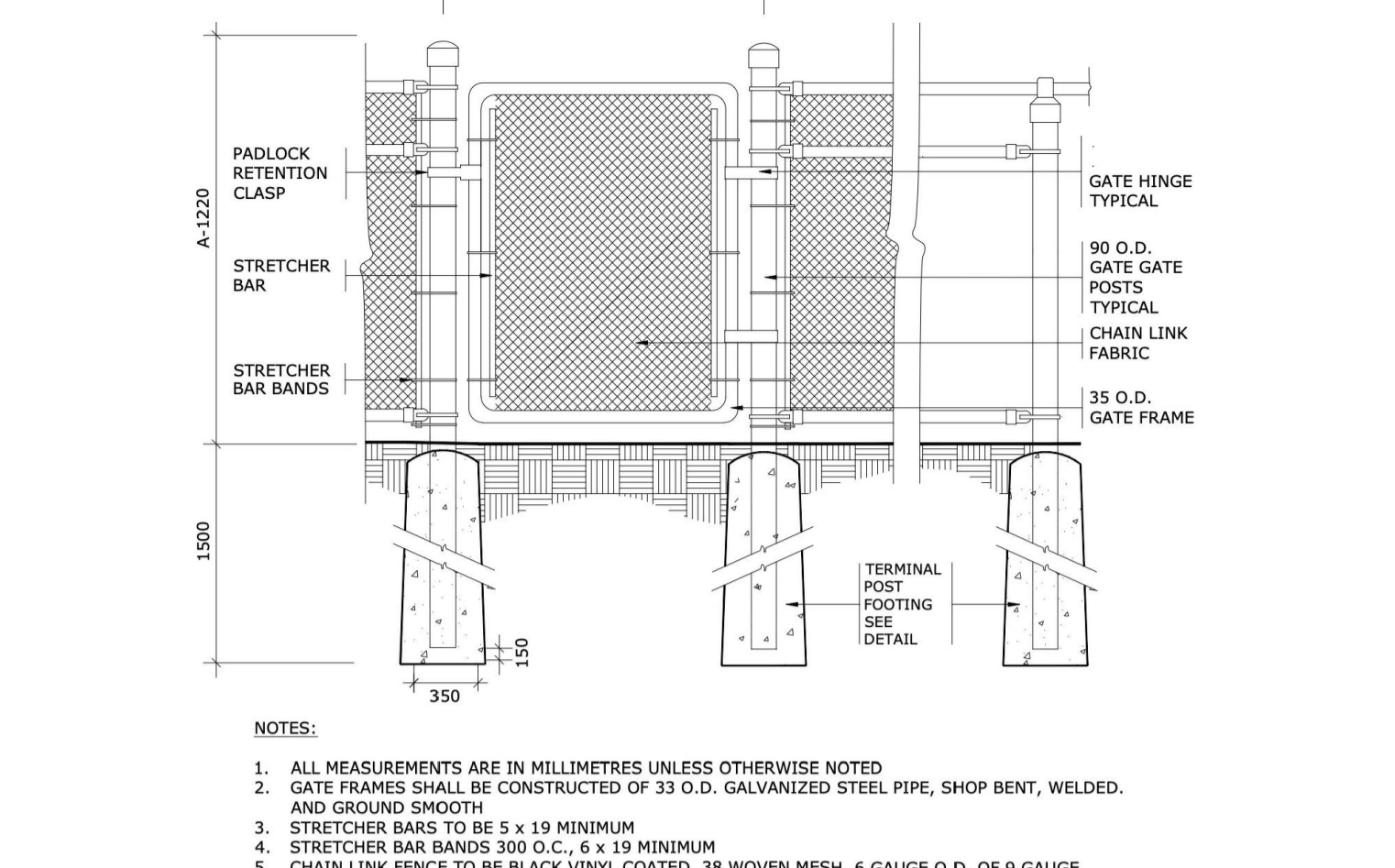
3 CONTINUOUS SHRUB PLANTING IN RIVER ROCK MULCH
NOT TO SCALE



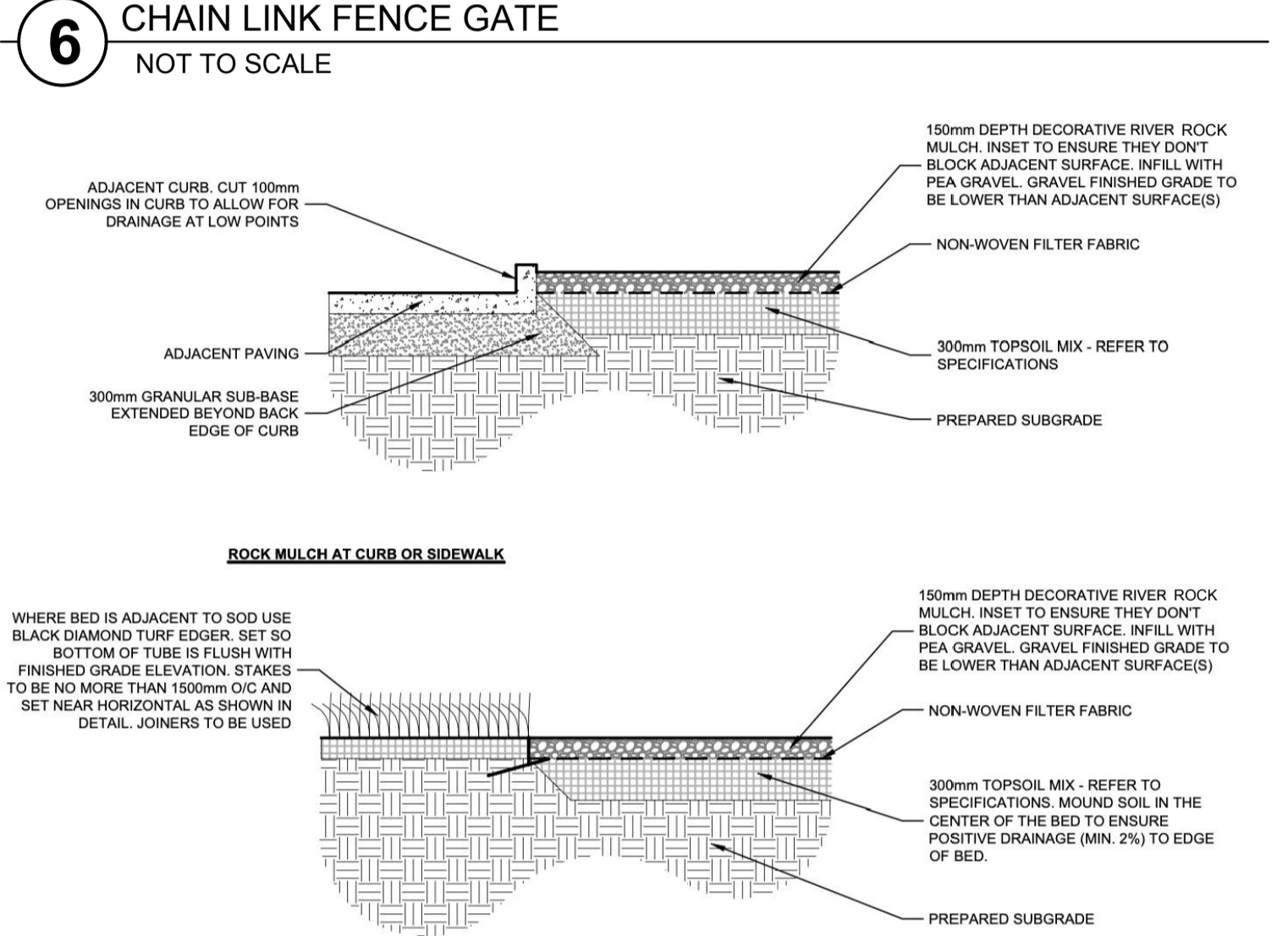
4 PERENNIAL AND ORNAMENTAL GRASS PLANTING IN MULCH
NOT TO SCALE



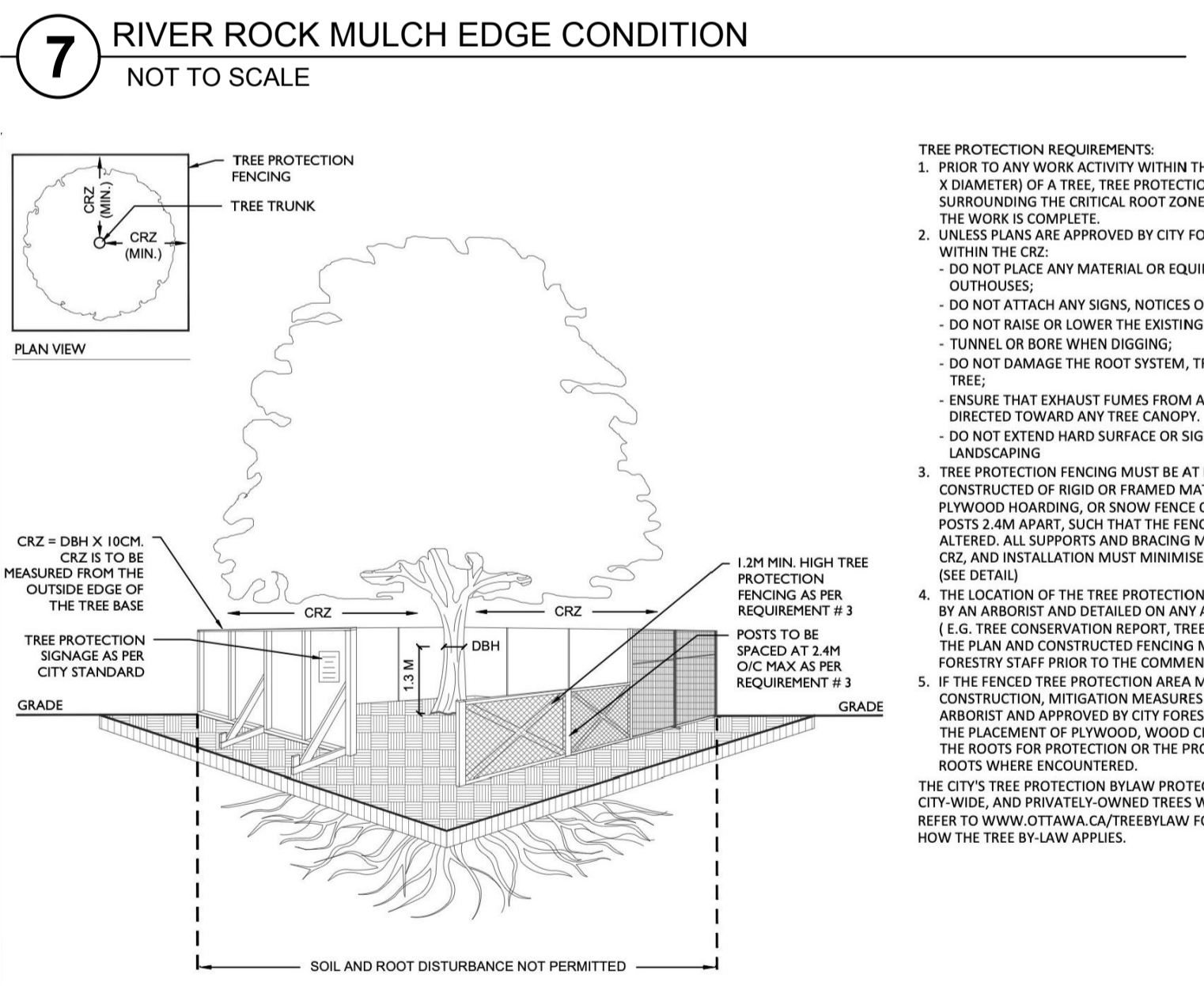
5 CHAIN LINK FENCE
NOT TO SCALE



6 CHAIN LINK FENCE GATE
NOT TO SCALE



7 RIVER ROCK MULCH EDGE CONDITION
NOT TO SCALE



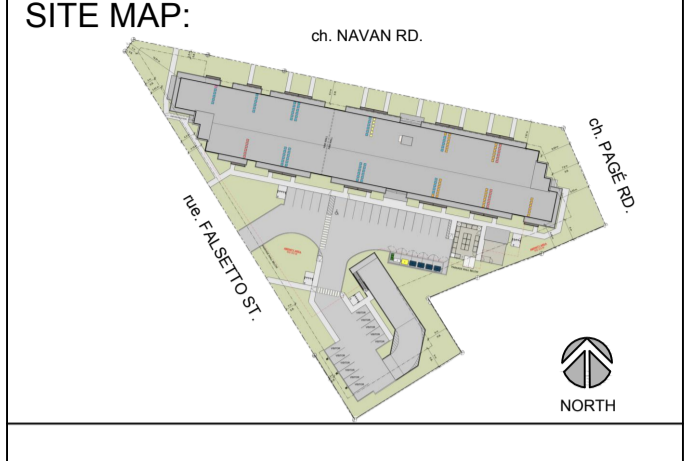
8 TREE PROTECTION FENCING
NOT TO SCALE

- NOTES**
1. ALL SOD BEDS SHALL HAVE A MINIMUM 150mm TOPSOIL. A SOIL TEST MAY BE REQUIRED TO ENSURE PROPER GROWING CONDITIONS (INCLUDING pH, CEC) ARE MET FOR STRONGEST GROWTH AND ESTABLISHMENT OF SOD.
 2. ALL SOD MUST BE FROM A RECOGNIZED GROWER FOLLOWING THE CANADIAN LANDSCAPE AND NURSERY STANDARDS AND ANY LOCAL GOVERNMENT REGULATIONS.
 3. PREPARE THE SOIL - ADD ANY AMENDMENTS AS NEEDED. GENTLY TAMP OR ROLL THE BED AFTER APPLICATION. **DO NOT COMPACT THE SOIL.** EXCESSIVE FORCE WILL DESTROY THE SOIL STRUCTURE AND INHIBIT GROWTH.
 4. AREAS WITH SOD WILL BE ACCEPTED BY THE PROJECT MANAGER FOLLOWING PERFORMANCE ACCEPTANCE PROVIDED: SODDED AREAS ARE PROPERLY ESTABLISHED.
 - A. TURF IS FREE OF DEAD SPOTS AND WEEDS.
 - B. NO SURFACE SOIL IS VISIBLE WHEN GRASS HAS BEEN CUT TO A HEIGHT OF 60mm.
 - C. TURF AREAS HAVE BEEN CUT NO LESS THAN TWICE, THE LAST CUT BEING CARRIED OUT WITHIN 24 HOURS PRIOR TO THE ACCEPTANCE INSPECTION.
 7. RIVER ROCK SIZE TO BE 100-150mm DIAMETER.

APPROVED
By sevignyjo at 3:27 pm, Jun 21, 2024

JOHN SEVIGNY C.E.T.
MANAGER (A), DEVELOPMENT REVIEW EAST
PLANNING, DEVELOPMENT & BUILDING SERVICES
DEPARTMENT, CITY OF OTTAWA

APPROVED
By sevignyjo at 3:27 pm, Jun 21, 2024



PROJECT STATUS:
ISSUED FOR COORDINATION

Revision Schedule

No.	Description	Revision Date
1	ISSUED FOR SITE PLAN REVIEW	2023-04-19
2	ISSUED FOR SITE PLAN SUBMISSION	2023-04-26
3	RE-ISSUED FOR SITE PLAN SUBMISSION	2023-07-14
4	ISSUED FOR SITE PLAN SUBMISSION	2023-09-11
5	ISSUED FOR SITE PLAN SUBMISSION	2023-11-16
6	RE-ISSUED FOR SITE PLAN SUBMISSION	2023-11-24
7	ISSUED FOR UDRP SUBMISSION	2024-01-31
8	RE-ISSUED FOR UDRP SUBMISSION	2024-04-12



TRADE CONTRACTORS SHALL VERIFY ALL DIMENSIONS AND REPORT ANY DISCREPANCIES OR INCONSISTENCIES TO SEYMOUR PACIFIC DEVELOPMENTS LTD., WITHOUT DELAY. FOR CLARIFICATION AND/OR CONFIRMATION. DO NOT SCALE DRAWINGS. DESIGNS REPRESENTED AND DRAWINGS USED AS INSTRUMENTS OF SERVICE SHALL REMAIN THE COPYRIGHT AND PROPERTY OF SEYMOUR PACIFIC DEVELOPMENTS LTD. ANY REPRODUCTION OR USE FOR ANY PURPOSE OTHER THAN THAT AUTHORIZED BY SEYMOUR PACIFIC DEVELOPMENTS LTD. IS PROHIBITED.

CONTRACTORS SHALL REMAIN FAMILIAR WITH, SHALL REFER TO, AND SHALL PERFORM IN ACCORDANCE WITH LOCAL LAWS, REGULATIONS AND BUILDING CODES. CONTRACTORS SHALL MAINTAIN GOOD INDUSTRY BUILDING AND SAFETY PRACTICES CONSISTENT WITH THE CONTRACT INTENT AND THE REQUIREMENTS OF JURISDICTIONAL AUTHORITIES.

ADDITIONAL CLAIMS AND COSTS RELATED TO NON-MATERIAL CHANGES WILL NOT BE ACCEPTED BY SEYMOUR PACIFIC DEVELOPMENTS LTD. NON-MATERIAL CHANGES ARE DEEMED TO BE PLAN CHANGES OR SPECIFICATION ADJUSTMENTS THAT DO NOT SUBSTANTIALLY AFFECT THE VALUE, TIME, COST AND QUALITY OF CONSTRUCTION.

CONTRACTORS SHALL MAKE EVERY REASONABLE EFFORT TO MAINTAIN SCHEDULE TARGETS AND PROVIDE GOOD EFFICIENCY, PROGRESS, WORKMANSHIP AND QUALITY TOWARD DEFICIENCY-FREE RESULTS.

PROJECT NAME: RHYTHM APARTMENTS

PROJECT NUMBER:

CITY OF OTTAWA:

ADDRESS: 3080 NAVAN ROAD OTTAWA, ON

DRAWING TITLE:

DETAILS

DRAWN BY: K. SELIN

CHECKED BY: K. CERVENY

DATE: 2024-04-12

SCALE: AS NOTED

DRAWING #: L.2

REV #: