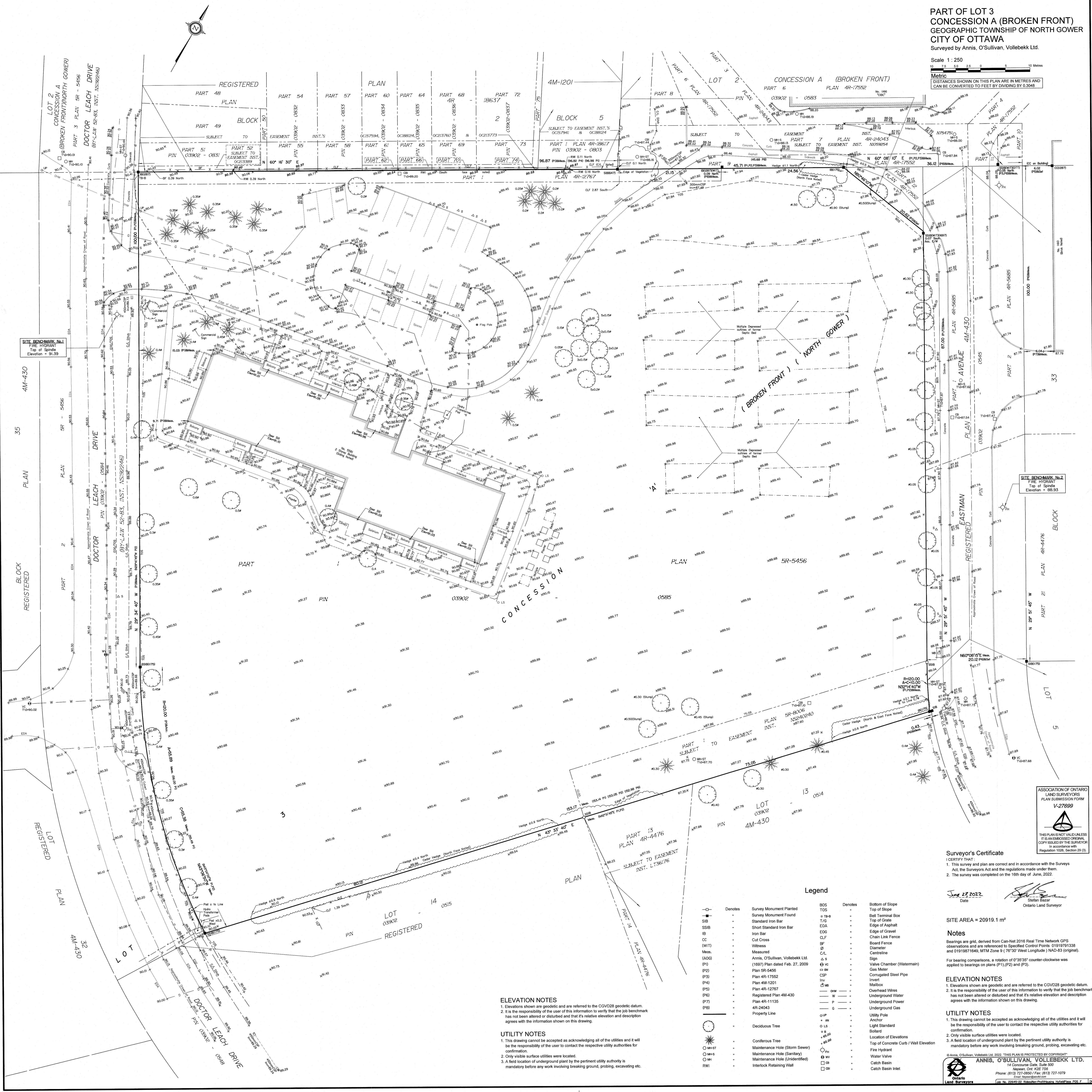


PART OF LOT 3  
CONCESSION A (BROKEN FRONT)  
GEOGRAPHIC TOWNSHIP OF NORTH GOWER  
CITY OF OTTAWA

Surveyed by Annis, O'Sullivan, Vollebek Ltd.

Scale 1:250

Metric  
DISTANCES SHOWN ON THIS PLAN ARE IN METRES AND  
CAN BE CONVERTED TO FEET BY DIVIDING BY 0.3048



SITE BENCHMARK No.1  
FIRE HYDRANT  
Top of Spindle  
Elevation = 91.39

SITE BENCHMARK No.2  
FIRE HYDRANT  
Top of Spindle  
Elevation = 90.93

ASSOCIATION OF ONTARIO  
LAND SURVEYORS  
PLAN SUBMISSION FORM  
V-27699

THIS PLAN IS NOT VALID UNLESS  
IT IS AN EMBOSSED ORIGINAL  
COPY ISSUED BY THE SURVEYOR  
In accordance with  
Regulation 1028, Section 20 (3).

Surveyor's Certificate  
I CERTIFY THAT:  
1. This survey and plan are correct and in accordance with the Surveys Act, the Surveys Regulations and the regulations made under them.  
2. The survey was completed on the 16th day of June, 2022.

June 27, 2022  
Date  
Shafiq Usman  
Ontario Land Surveyor

SITE AREA = 20919.1 m<sup>2</sup>  
Notes  
Bearings are grid, derived from Can-Net 2016 Real Time Network GPS observations and are referenced to Specified Control Points 01919701336 and 01919871649, MTM Zone 9 (76°30' West Longitude) NAD-83 (original).  
For bearing comparisons, a rotation of 0°35'35" counter-clockwise was applied to bearings on plans (P1), (P2) and (P3).

ELEVATION NOTES  
1. Elevations shown are geodetic and are referred to the CGVD28 geodetic datum.  
2. It is the responsibility of the user of this information to verify that the job benchmark has not been altered or disturbed and that its relative elevation and description agrees with the information shown on this drawing.

UTILITY NOTES  
1. This drawing cannot be accepted as acknowledging all of the utilities and it will be the responsibility of the user to contact the respective utility authorities for confirmation.  
2. Only visible surface utilities were located.  
3. A field location of underground plant by the pertinent utility authority is mandatory before any work involving breaking ground, probing, excavating etc.

UTILITY NOTES  
1. This drawing cannot be accepted as acknowledging all of the utilities and it will be the responsibility of the user to contact the respective utility authorities for confirmation.  
2. Only visible surface utilities were located.  
3. A field location of underground plant by the pertinent utility authority is mandatory before any work involving breaking ground, probing, excavating etc.

Legend table with symbols and descriptions for monuments, trees, utility lines, and other features.

ELEVATION NOTES  
UTILITY NOTES