

Client / Client

Rideau Non-Profit Housing Inc.

key plan / plan repère



legend / légende

- SCOPE OF LANDSCAPE WORKS
- # EXISTING TREES TO REMAIN REFER TO Tree Conservation Report FOR DETAILS
- CRITICAL ROOT ZONE
- TREE PROTECTION FENCING
- DECIDUOUS TREES (SEE PLANTING NOTES & SCHEDULE FOR SPECIES AND QUANTITIES)
- CONIFEROUS TREES (SEE PLANTING SCHEDULE FOR SPECIES AND QUANTITIES)
- HEAVY DUTY PAVING
- PEDESTRIAN PATHWAY
- UNIT PAVER PATIOS
- PLANTING AREA
- BENCH
- SEAT WALL

rev'n	description / la description	yyyy/mm/dd
01	issue for site plan application	2023/03/31
00	issue for client review	2023/01/11

FOTENN Planning + Design
 396 Cooper Street, Suite 300 Ottawa, ON, CANADA K2P 2H7
 613.730.5709
 fotenn.com

north / le nord stamp / le cachet

project / projet
Hyfield Place
5581 Doctor Leach Drive,
Manotick

drawing / dessin

LANDSCAPE PLAN

designed / conçu
BM drawn / dessiné
BM reviewed / examiné
DF

date
2022-07-26
 project number / No. du projet

drawing number / No. du dessin
L1 of 4

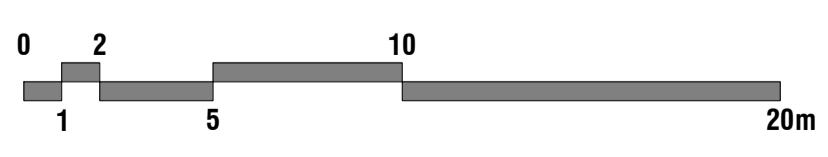


NOTES:
 DO NOT SCALE DRAWINGS;
 NOTES ARE APPLICABLE TO ALL DRAWINGS IN THE SET.
 Fotenn Consultants Inc. IS NOT RESPONSIBLE FOR ACCURACY OF BASE INFORMATION;
 REFER TO CIVIL ENGINEERING DRAWINGS FOR GRADING & SITE SERVICING INFORMATION;
 THE CONTRACTOR IS RESPONSIBLE FOR CONFIRMING SITE CONDITIONS AND REPORTING ANY DISCREPANCIES TO THE LANDSCAPE ARCHITECT;
 THE CONTRACTOR IS RESPONSIBLE FOR CONFIRMING EXACT LOCATIONS OF ALL UNDERGROUND SERVICES AND OBTAINING CLEARANCE FROM ALL APPLICABLE UTILITIES. PROPOSED WORKS FOUND TO BE IN CONFLICT WITH UNDERGROUND SERVICES MAY BE ADJUSTED AT THE DIRECTION OF THE LANDSCAPE ARCHITECT;
 LANDSCAPE ELEMENTS SHOWN ARE SUBJECT TO THE FINAL LOCATION OF UNDERGROUND SERVICES AND UTILITIES;
 DO NOT INSTALL TREES ON PROPERTY / LOT LINES OR WITHIN DRAINAGE EASEMENTS;
 PERFORM WORK IN ACCORDANCE WITH DETAILS AND SPECIFICATIONS;
 ALL PLANT MATERIAL SHALL BE No. 1 NURSERY STOCK AND SHALL MEET OR EXCEED THE SPECIFICATION OF THE Canadian Standards for Nursery Stock, AS PUBLISHED BY THE Canadian Nursery Landscape Association;
 SPECIES SUBSTITUTIONS ARE NOT PERMITTED WITHOUT PRIOR WRITTEN APPROVAL OF THE LANDSCAPE ARCHITECT;
 ALL UN-PAVED SURFACES TO RECEIVE 150mm DEPTH TOPSOIL & SOD.
 THESE PLANS ARE TO BE READ IN CONJUNCTION WITH THE Tree Conservation Report, AS PREPARED BY IFS Associates Inc.

STANDARDS FOR TREE PLANTING:
 NO PLANTING ON CORNERS OR ANYWHERE WHERE IT WOULD CREATE A SIGHT LINE CONCERN;
 MAINTAIN A MINIMUM DISTANCE OF 2.5m FROM THE CURB FOR DECIDUOUS TREES AND 4.5m FOR CONIFEROUS TREES;
 MAINTAIN A MINIMUM DISTANCE OF 1.5m FOR DECIDUOUS (4.5m FOR CONIFERS) FROM ANY SIDEWALK OR PRIVATE WALKWAY;
 MAINTAIN A MINIMUM DISTANCE OF 1.2m FROM ALL DRIVEWAYS;
 MAINTAIN A MINIMUM DISTANCE OF 2.5m FROM COMMUNITY MAILBOXES, LIGHT STANDARDS, FIRE HYDRANTS AND NO PLANTING IN FRONT OF HYDRANTS;
 MAINTAIN A MINIMUM DISTANCE OF 3.0m FROM ALL HYDRO TRANSFORMERS;
 MAINTAIN A MINIMUM DISTANCE OF 1.0m FROM ALL UNDERGROUND SERVICES;
 MAINTAIN A MINIMUM DISTANCE OF 1.0m FROM ALL BELL AND CABLE BOXES;

IMPORTANT NOTICE FOR CONTRACTOR:
 THE CITY OF OTTAWA REQUIRES A Certificate of Completion (F1) Landscape Works TO BE SUBMITTED AND SEALED BY THE LANDSCAPE ARCHITECT. CONTRACTORS ARE RESPONSIBLE FOR FAMILIARIZING THEMSELVES WITH THE REQUIREMENTS OF THIS PROCESS AND PROVIDING SUFFICIENT NOTICE TO THE LANDSCAPE ARCHITECT TO CONDUCT SITE REVIEWS DURING INSTALLATION OF TREES. THE 1 YEAR WARRANTY PERIOD SHALL NOT COMMENCE UNTIL THE LANDSCAPE ARCHITECT HAS SUBMITTED THE F1 Certificate.
 PRIOR TO INSTALLATION OF TREES, THE DEVELOPER WILL CONTACT THE PLANNING AND GROWTH MANAGEMENT AND FORESTRY SERVICES TO REVIEW THE SPECIES AND LOCATION OF TREES.

1 LANDSCAPE PLAN
L1 1:200



TREE PLANTING SCHEDULE				
KEY	QTY.	BOTANICAL NAME	COMMON NAME	SIZE / CONDITION / SPACING
DECIDUOUS TREES				
AS	1	Acer saccharum	Sugar Maple	70mm cal. / W.B.
BA	2	Betula alleghaniensis	Yellow Birch	50mm cal. / W.B.
CA	5	Cornus alternifolia	Pagoda Dogwood	50mm cal. / W.B. / Single Stem
QR	3	Quercus rubra	Red Oak	70mm cal. / W.B.
TA	2	Tilia americana	Basswood	70mm cal. / W.B.
CONIFEROUS TREES				
PP	1	Picea pungens	Colorado Spruce	175cm ht. / W.B.

REFER TO SHEETS L2 AND L3 FOR SHRUB AND PERENNIAL PLANTING SCHEDULE AND LOCATIONS

PLOT INFORMATION: DWG NAME: P:\PROJECTS\2023\07\05\5581 Doctor Leach Drive\LANDSCAPE\1 - LANDSCAPE PLAN.dwg PLOT DATE: 2023-07-05 09:56:47 PM SHEET SIZE: 300x420 (A1) PLOT BY: S. Williams/M. Moore LAST SAVED BY: amoham

Client / Client

Rideau Non-Profit Housing Inc.

key plan / plan repère

legend / légende

rev'n	description / la description	yyyy/mm/dd
01	issue for site plan application	2023/03/31
00	issue for client review	2023/01/11

FOTENN Planning + Design
 395 Cooper Street, Suite 300
 Ottawa, ON, CANADA K2P 2H7
 613.730.5709
 fotenn.com

north / le nord stamp / le cachet

project / projet
Hyfield Place
5581 Doctor Leach Drive,
Manotick

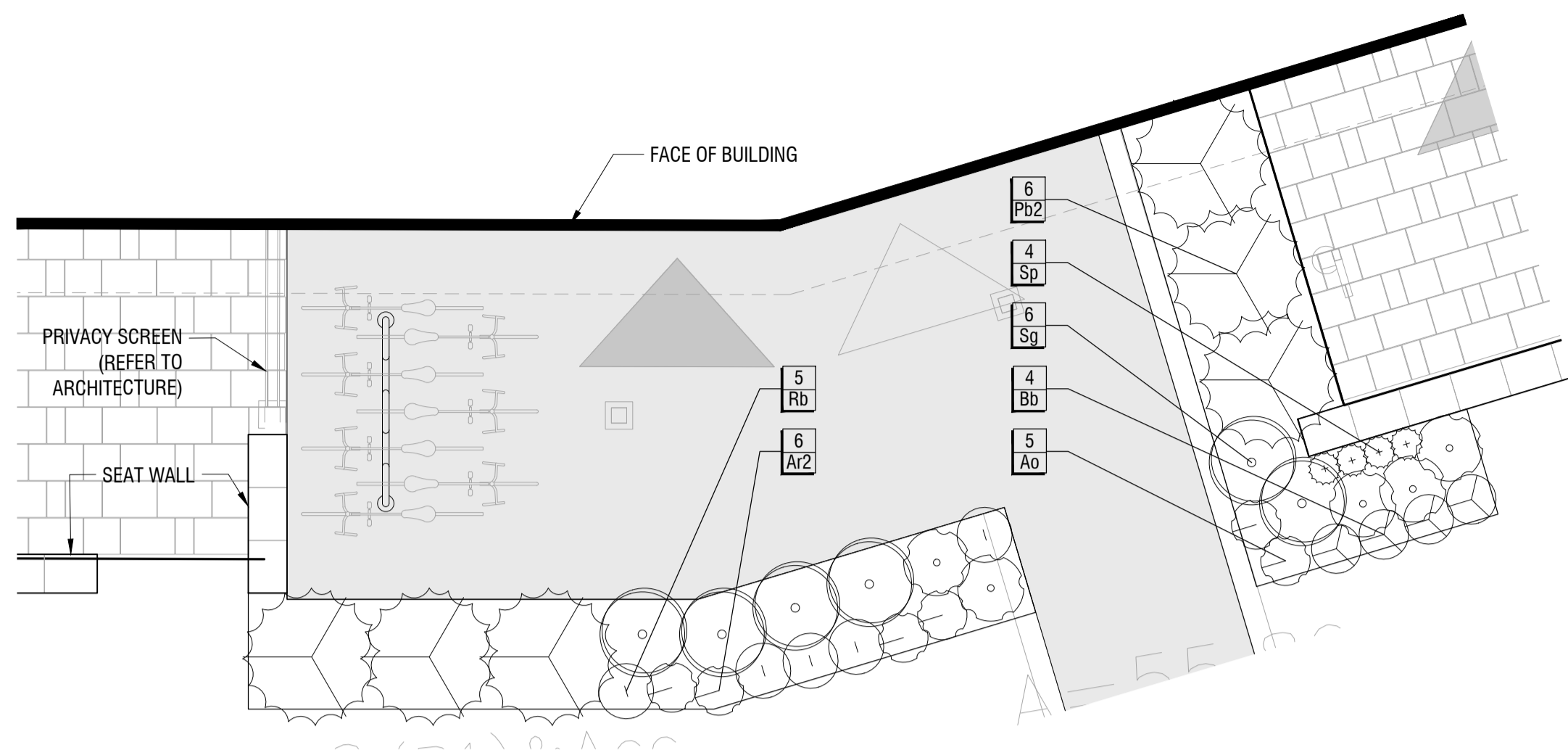
drawing / dessin

PLANTING PLANS

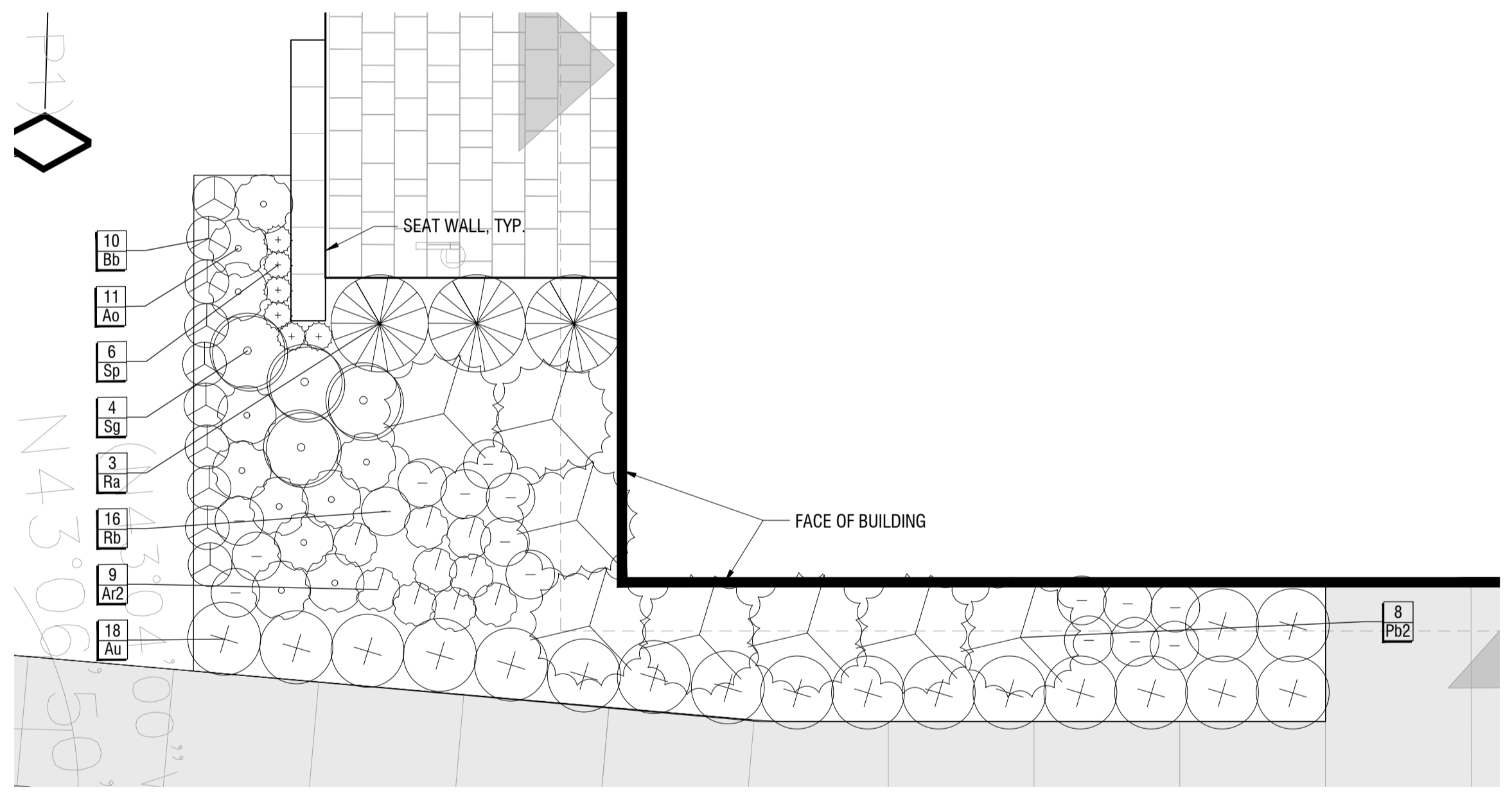
designed / conçu	drawn / dessiné	reviewed / examiné
BM	BM	DF
date	project number / No. du projet	
2022-07-26		

drawing number / No. du dessin

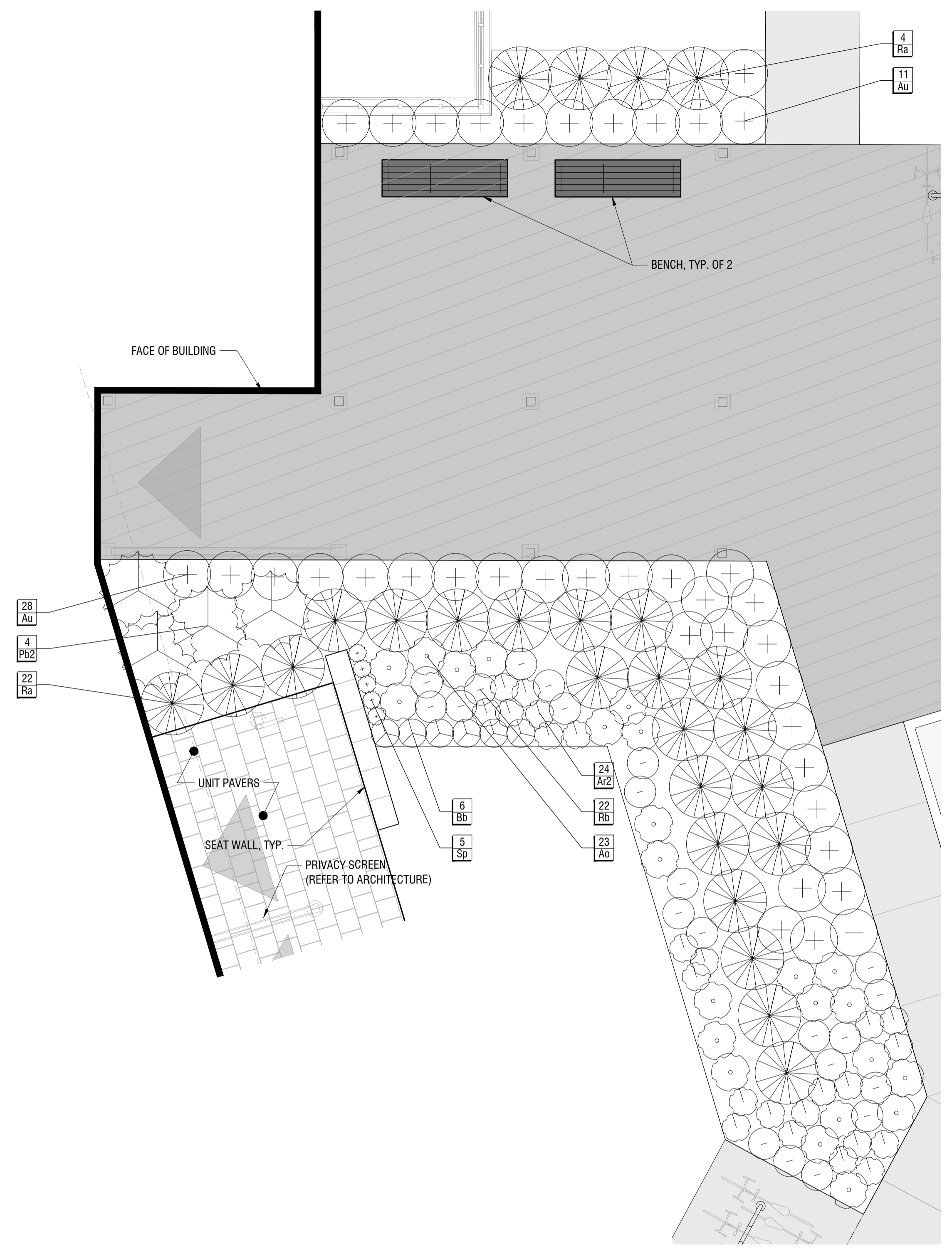
L3 of 4



1 PLANTING AREA F
L3 1:50



2 PLANTING AREA G
L3 1:50



3 PLANTING AREA H
L3 1:50



PRELIMINARY
 NOT FOR CONSTRUCTION

PLOT INFORMATION: DWG NAME: P:\PROJECTS\2023\5581 Doctor Leach Drive - LANDSCAPE DESIGN DEVELOPMENT\01 PLANTING\Hyfield Place - L3.dwg PLOT DATE: 2023-04-26 02:27 PM SHEET SIZE: 33.0x41.00 (MM) PLOTTED BY: Suzanne Mihaljic LAST SAVED BY: amihaljic

