

TOPOGRAPHIC PLAN OF
PART OF LOT 11
CONCESSION 3 (RIDEAU FRONT)
GEOGRAPHIC TOWNSHIP NEPEAN
CITY OF OTTAWA
Surveyed by Annis, O'Sullivan, Vollebek Ltd.

Scale 1 : 300
12 6 3 0 6 12 Metres

Metric
DISTANCES AND COORDINATES SHOWN ON THIS PLAN
ARE IN METRES AND CAN BE CONVERTED TO FEET BY
DIVIDING BY 0.3048.

Oct. 21, 2022
Date
J. E. Anderson
Ontario Land Surveyor

OTTAWA - CARLETON STANDARD
CONDOMINIUM PLAN 1079
PIN 16079 - 0001 TO 0158

BLOCK 181
0.30 Reserve
PIN 04595-2650

PART 3
PIN 04595 - 2080

PART 1
PIN 04595 - 2078

LOT 11 CONCESSION 3 (RIDEAU FRONT)
PLAN 4R 31049

BLOCK 282

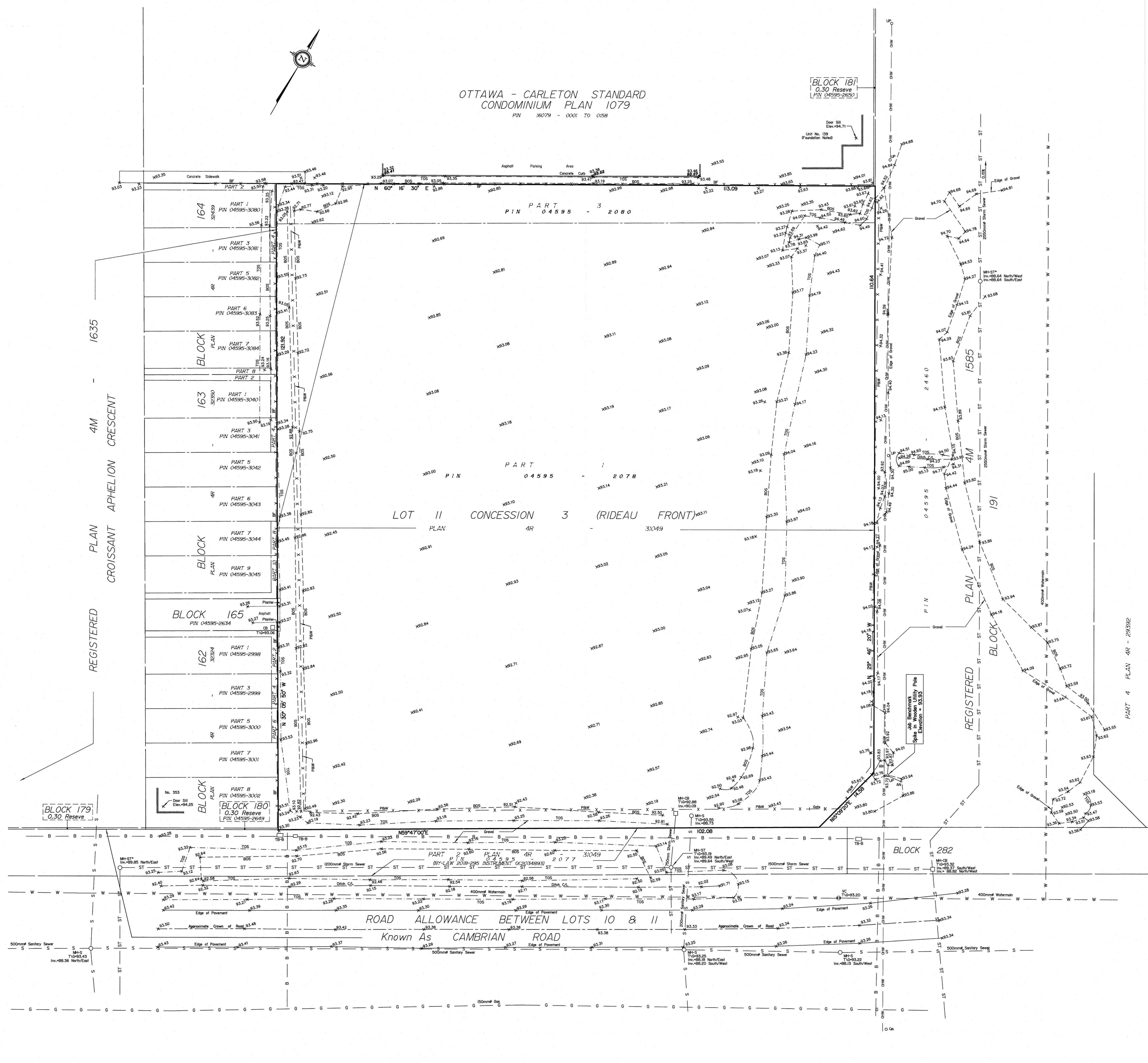
REGISTERED
PLAN CROISSANT APHELION CRESCENT
4M 1635

Notes & Legend

Denotes	
○ MH-ST	Maintenance Hole (Storm Sewer)
○ MH-S	Maintenance Hole (Sanitary)
○ VC	Valve Chamber (Watermain)
□ CB	Catch Basin
○ TB-B	Bell Terminal Box
BF	Board Fence
P&W	Post and Wire Fence
○ UP	Utility Pole
• AN	Anchor
— OW	Overhead Wires
— ST	Underground Storm Sewer
— S	Underground Sanitary Sewer
— W	Underground Water
— B	Underground Bell
∅	Diameter
+ 85.00	Location of Elevations
+ 85.00	Top of Concrete Curb Elevation
C/L	Centreline
—	Property Line
TOS	Top of Slope
BOS	Bottom of Slope

Boundary information compiled from Registered Plan 4M-1635
and Plan 4R-31049

SITE AREA = 13626 m²



ELEVATION NOTES

- Elevations shown are geodetic and are referred to the CGVD28 geodetic datum, derived from control monument No. 01668071 having an elevation of 89.742 metres.
- It is the responsibility of the user of this information to verify that the job benchmark has not been altered or disturbed and that it's relative elevation and description agrees with the information shown on this drawing.

UTILITY NOTES

- This drawing cannot be accepted as acknowledging all of the utilities and it will be the responsibility of the user to contact the respective utility authorities for confirmation.
- Only visible surface utilities were located.
- Underground utility data derived from City of Ottawa utility sheet reference CC-B-20 & CC-B-21.
- Sanitary and storm sewer grades and inverts were derived from City of Ottawa Plans Reference D07-16-16-0023 P1 Plan No. 17566 (Sheet 18 & 20).
- A field location of underground plant by the pertinent utility authority is mandatory before any work involving breaking ground, probing, excavating etc.
- Location of Storm and Sewer Manhole marked with * derived from City of Ottawa Plans Reference D07-16-16-0023 P1 Plan No. 17566 (Sheet 18 & 20)