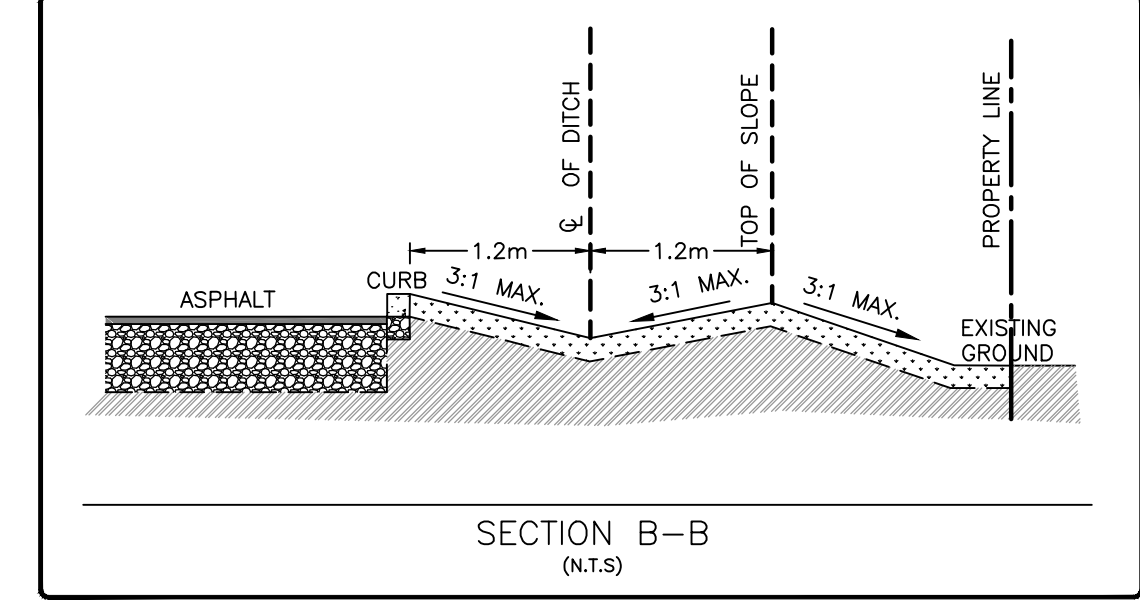
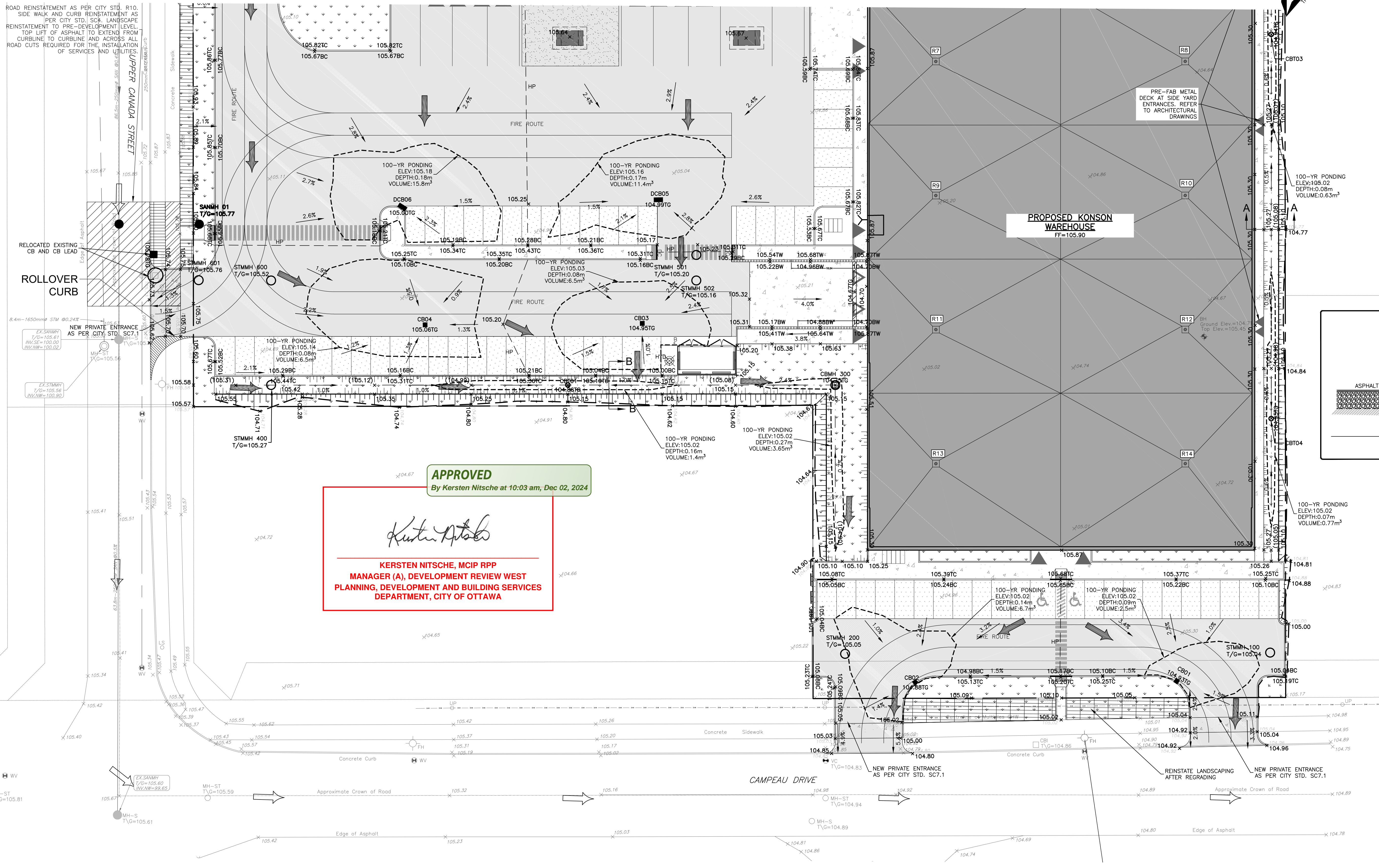
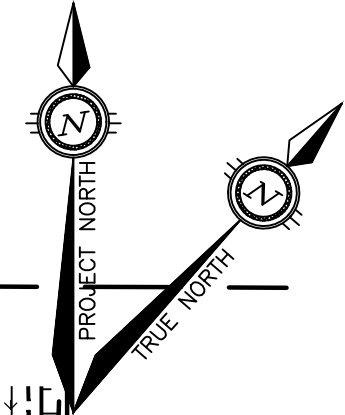
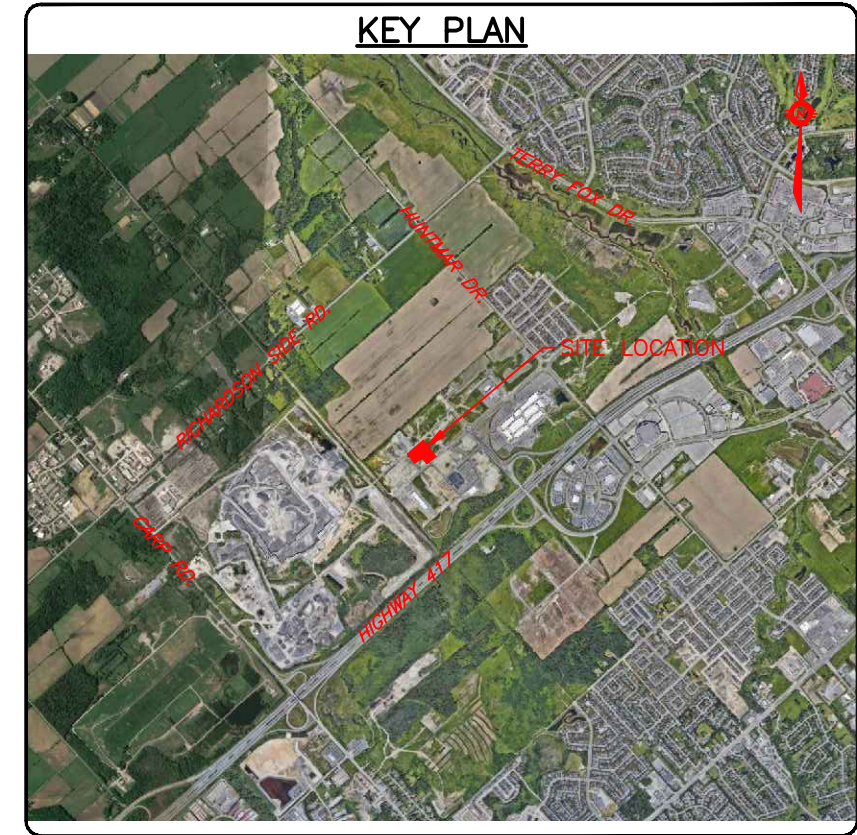
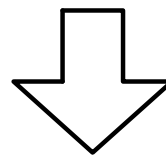


CONTINUE FROM DWG# C201



APPROVED
By Kersten Nitsche at 10:03 am, Dec 02, 2024
Kersten Nitsche
KERSTEN NITSCH, MCIP RPP
MANAGER (A), DEVELOPMENT REVIEW WEST
PLANNING, DEVELOPMENT AND BUILDING SERVICES
DEPARTMENT, CITY OF OTTAWA

Vertical text on the left margin containing drawing details and scale information.

CAUTION
THE POSITION OF ALL POLE LINES, CONDUITS, WATERMANS, SEWERS AND OTHER UNDERGROUND AND OVERGROUND UTILITIES AND STRUCTURES IS NOT NECESSARILY SHOWN ON THE CONTRACT DRAWINGS, AND WHERE SHOWN, THE ACCURACY OF THE POSITION OF SUCH UTILITIES AND STRUCTURES IS NOT GUARANTEED. BEFORE STARTING WORK, DETERMINE THE EXACT LOCATION OF ALL SUCH UTILITIES AND STRUCTURES AND ASSUME ALL LIABILITY FOR DAMAGE TO THEM.

NOT FOR CONSTRUCTION

Table with 4 columns: REV, REVISION DESCRIPTION, DATE, BY. Contains revision history for the drawing.



CLIENT: DOLYN CONSTRUCTION LTD., 1-888 LADY ELLEN PLACE, OTTAWA, ON. K1Z 5L5

Table with 2 columns: PROJECT, TITLE. Lists project name and drawing title.

PROJECT: KONSON WAREHOUSE, 1485 UPPER CANADA STREET, OTTAWA, ONTARIO.
TITLE: SITE GRADING PLAN-2

PROJECT No. OTT-22023462-AD
SURVEY ADV
DATE 01/10/2023
DRAWING No. C202