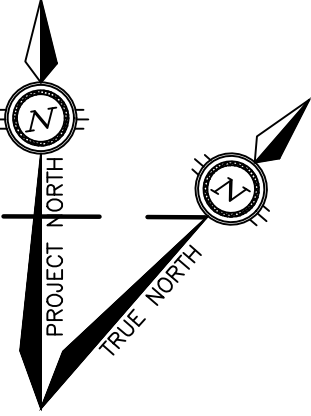
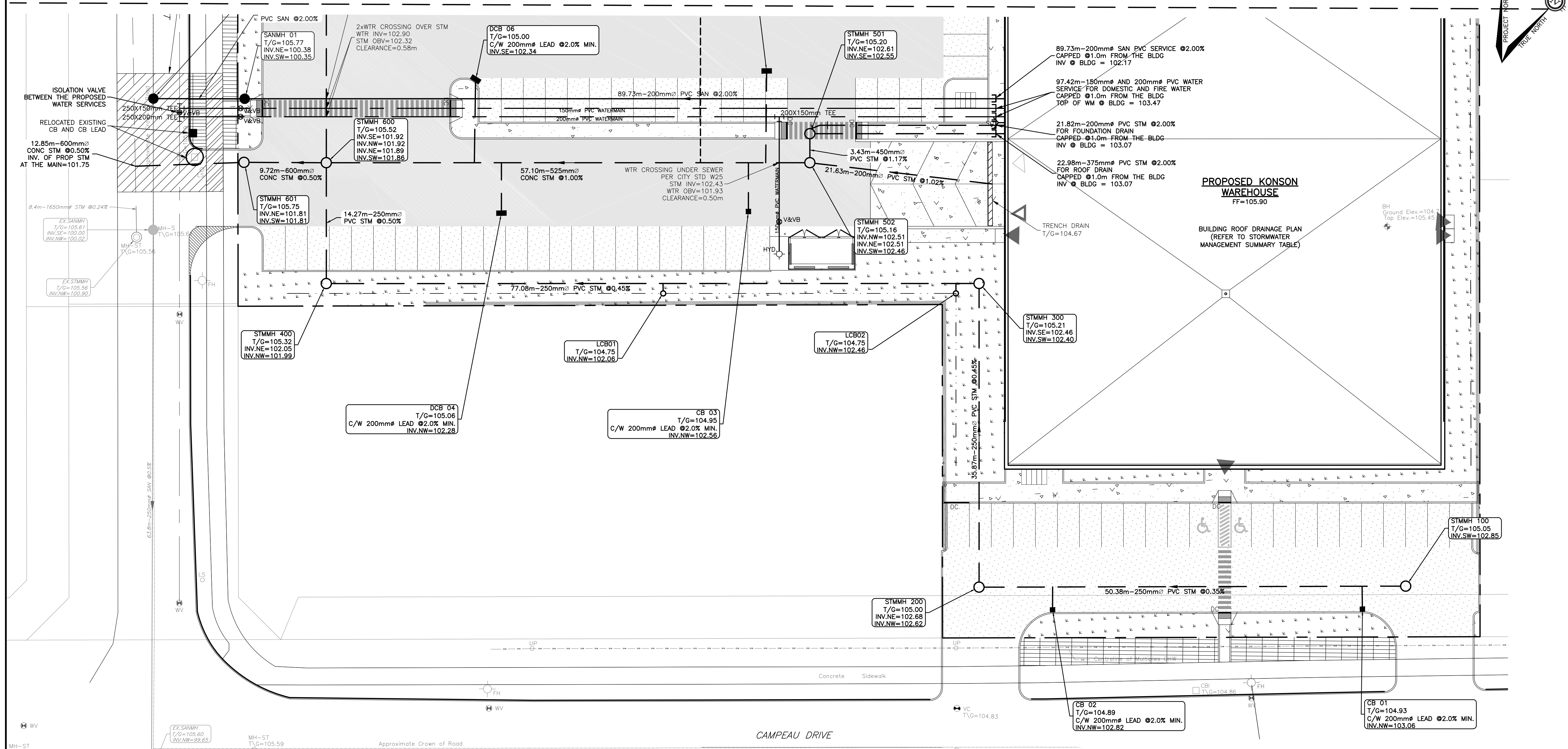
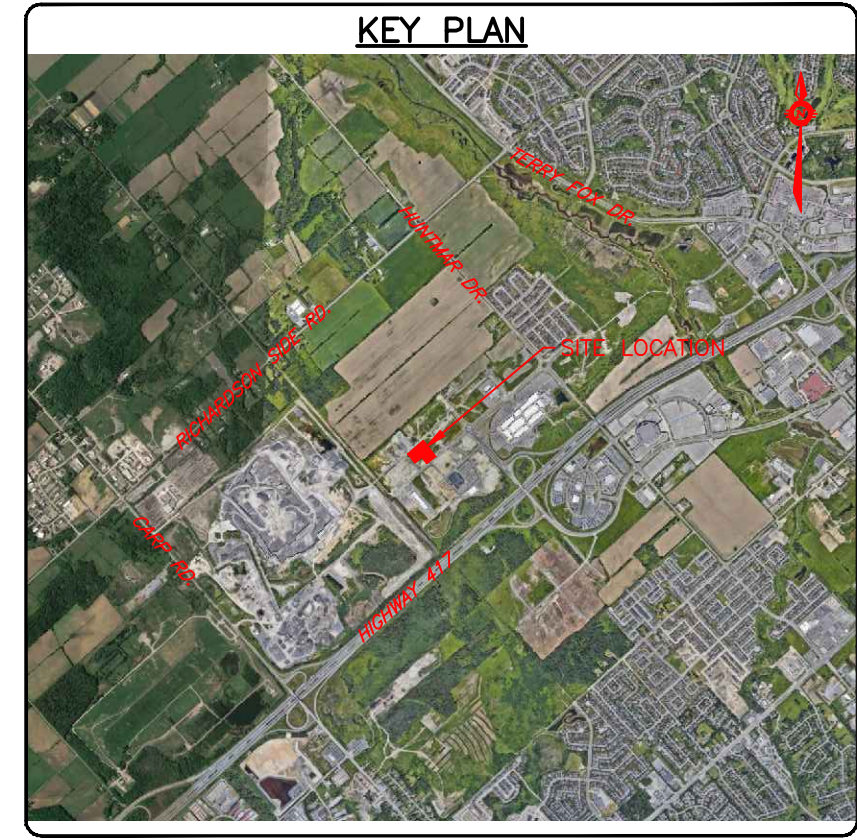


CONTINUE FROM DWG# C101



NOT FOR CONSTRUCTION

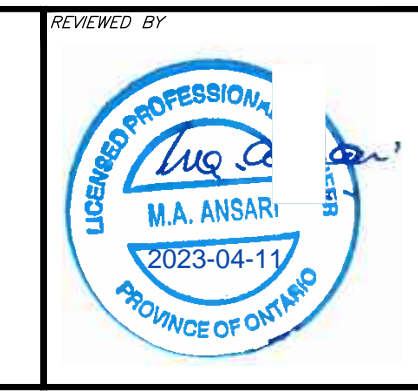
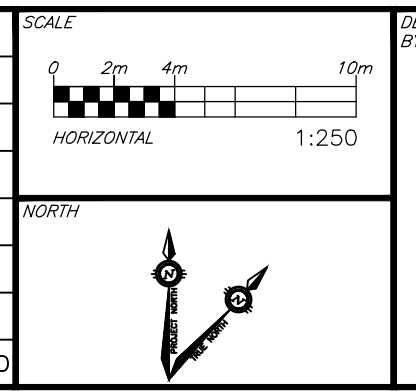
MH #	TOP OF GRATE	INVERTS	REFERENCE	FRAME	COVER
SANMH01	T/G=206.74	NE. IN=100.21 (250mm) SW. OUT=100.18 (250mm)	OPSD 701.010	S25	S24
SANMH02	T/G=105.78	NW. IN=100.07 (250mm) NE. IN=100.07 (250mm) SE. OUT=100.07 (250mm)	OPSD 701.010	S25	S24

CB #	TOP OF GRATE	INVERTS	REFERENCE	FRAME	COVER
LCB01	T/G=104.75	NW. OUT=102.06 (200mm)	ADS NYLOPLAST 12" DRAIN BASIN OR APPROVED EQUIVALENT		
LCB02	T/G=104.75	NW. OUT=102.46 (200mm)			
LCB03	T/G=105.20	SW. OUT=103.07 (200mm)			
CB01	T/G=104.93	NW. OUT=103.06 (200mm)		OPSD 705.010	S19
CB02	T/G=104.89	NW. OUT=102.82 (200mm)	OPSD 705.010	S19	S19
CB03	T/G=104.95	NW. OUT=102.56 (200mm)	OPSD 705.010	S19	S19
DCB04	T/G=105.06	NW. OUT=102.28 (200mm)	OPSD 705.020	S19	S19
DCB05	T/G=104.99	SE. OUT=102.69 (200mm)	OPSD 705.020	S19	S19
DCB06	T/G=105.00	SE. OUT=102.34 (200mm)	OPSD 705.020	S19	S19
CB07	T/G=105.40	NE. OUT=102.18 (200mm)	OPSD 705.010	S19	S19
CB09	T/G=105.41	SE. OUT=102.51 (200mm)	OPSD 705.010	S19	S19
CB10	T/G=105.23	SE. OUT=102.65 (200mm)	OPSD 705.010	S19	S19
CB11	T/G=105.15	SE. OUT=102.87 (200mm)	OPSD 705.010	S19	S19

MH #	TOP OF GRATE	INVERTS	REFERENCE	FRAME	COVER
STMMH100	T/G=105.05	SW. OUT=102.85 (250mm)	OPSD 701.010	S25	S24.1
STMMH200	T/G=105.00	NE. IN=102.68 (250mm) NW. OUT=102.62 (250mm)	OPSD 701.010	S25	S24.1
STMMH300	T/G=105.21	SE. IN=102.46 (250mm) SW. OUT=102.40 (250mm)	OPSD 701.010	S25	S24.1
STMMH400	T/G=105.32	NE. IN=102.05 (250mm) NW. OUT=101.99 (250mm)	OPSD 701.010	S25	S24.1
STMMH501	T/G=105.20	NE. IN=102.61 (375mm) SE. OUT=102.55 (450mm)	OPSD 701.010	S25	S24.1
STMMH502	T/G=105.16	NW. IN=102.51 (450mm) NE. IN=102.51 (200mm) SW. OUT=102.46 (525mm)	OPSD 701.010	S25	S24.1
STMMH600	T/G=105.52	SE. IN=101.92 (250mm) NW. IN=101.92 (375mm) NE. IN=101.89 (525mm) SW. OUT=101.86 (600mm)	OPSD 701.011	S25	S24.1
STMMH601	T/G=105.76	NE. IN=101.81 (600mm) SW. OUT=101.81 (600mm)	OPSD 701.010	S25	S24.1
STMMH700	T/G=105.74	NE. IN=102.24 (300mm) SE. OUT=102.18 (375mm)	OPSD 701.010	S25	S24.1
STMMH900	T/G=105.28	SW. OUT=102.83 (300mm)	OPSD 701.010	S25	S24.1

CAUTION THE POSITION OF ALL POLE LINES, CONDUITS, WATERMANS, SEWERS AND OTHER UNDERGROUND AND OVERGROUND UTILITIES AND STRUCTURES IS NOT NECESSARILY SHOWN ON THE CONTRACT DRAWINGS, AND WHERE SHOWN, THE ACCURACY OF THE POSITION OF SUCH UTILITIES AND STRUCTURES IS NOT GUARANTEED. BEFORE STARTING WORK, DETERMINE THE EXACT LOCATION OF ALL SUCH UTILITIES AND STRUCTURES AND ASSUME ALL LIABILITY FOR DAMAGE TO THEM.

REV	REVISION DESCRIPTION	DATE	BY	APPD
1	ISSUED FOR SPC	04/06/23	AJ	AA



DESIGNED BY: M.A. ANSARI  
REVIEWED BY: M.A. ANSARI  
CLIENT: DOLYN CONSTRUCTION LTD., 1-888 LADY ELLEN PLACE, OTTAWA, ON. K1Z 5L5

PROJECT NAME: KONSON WAREHOUSE	PROJECT ADDRESS: 1485 UPPER CANADA STREET, OTTAWA, ONTARIO.	PROJECT NO: OTT-22023462-AD
DRAWING TITLE: SITE SERVICING PLAN-2	DRAWING NO: C102	DATE: 01/10/2023

Vertical text on the far left edge containing file paths and project identifiers.