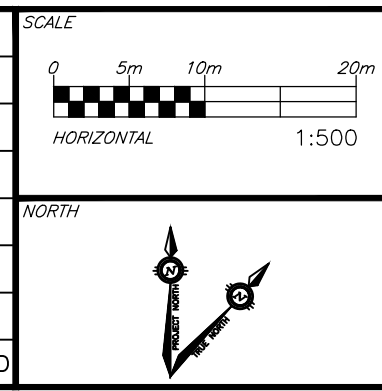


STORMWATER STORAGE AND CONTROL TABLE

AREA NO.	CONTROL METHOD (LOCATION)	CONTROL PRODUCT	100-YR PONDING DEPTH (m) (PONDING LOCATION)	MAX. PONDING AVAILABLE (m) (PONDING LOCATION)
A1	ICD (CB11)	Hydrovex 150 VHV-2	0.15 (CB11)	0.18 (CB11)
A2	ICD (CB10)	Hydrovex 150 VHV-2	0.13 (CB10)	0.13 (CB10)
A3	ICD (CB09)	Hydrovex 150 VHV-2	0.19 (CB09)	0.20 (CB09)
A4	ICD (CB07)	Hydrovex 125 VHV-2	0.15 (CB07)	0.17 (CB07)
A5-1	ICD (DCB06)	Hydrovex 200 VHV-2	0.18 (DCB06)	0.18 (DCB06)
A5-2	ICD (CB04)	Hydrovex 125 VHV-2	0.08 (CB04)	0.14 (CB04)
A6-1	ICD (DCB05)	Hydrovex 200 VHV-2	0.17 (DCB05)	0.18 (DCB05)
A6-2	ICD (CB03)	Hydrovex 100 VHV-1	0.08 (CB03)	0.20 (CB03)
A7-1			0.16 (CBT01) 0.27 (CBMH300)	0.16 (CBT01) 0.27 (CBMH300)
A7	ICD (STMMH400)	Hydrovex 150 VHV-2	0.09 (CB01) 0.14 (CB02) 0.08 (CBT03, CBT04)	0.09 (CB01) 0.14 (CB02) 0.08 (CBT03, CBT04)
A8	UNCONTROLLED	-	-	-
A9	UNCONTROLLED	-	-	-
A10-1	UNCONTROLLED	-	-	-
A10-2	UNCONTROLLED	-	-	-
A10-3	UNCONTROLLED	-	-	-
A11-1 - A11-4	ROOF DRAIN	1-WATTS ACCUTROL ROOF DRAIN WITH 2 WIERS (FOR INFILTRATION)	0.15 (R1, R2, R3, R4)	0.15 (R1, R2, R3, R4)
A11-5 - A11-12	ROOF DRAIN	1-WATTS ACCUTROL ROOF DRAIN WITH 3 WIERS (FLOW TO STM SEWER)	0.15 (R5 - R12)	0.15 (R5 - R12)
A11-13 - A11-14	ROOF DRAIN	1-WATTS ACCUTROL ROOF DRAIN WITH 2 WIERS (FLOW TO STM SEWER)	0.15 (R13, R14)	0.15 (R13, R14)

**CAUTION**  
THE POSITION OF ALL POLE LINES, CONDUITS, WATERMANS, SEWERS AND OTHER UNDERGROUND AND OVERGROUND UTILITIES AND STRUCTURES IS NOT NECESSARILY SHOWN ON THE CONTRACT DRAWINGS, AND WHERE SHOWN, THE ACCURACY OF THE POSITION OF SUCH UTILITIES AND STRUCTURES IS NOT GUARANTEED. BEFORE STARTING WORK, DETERMINE THE EXACT LOCATION OF ALL SUCH UTILITIES AND STRUCTURES AND ASSUME ALL LIABILITY FOR DAMAGE TO THEM.

REV	REVISION DESCRIPTION	DATE	BY	APPD
2	RE-ISSUED FOR SPC	09/12/23	AJ	AA
1	ISSUED FOR SPC	04/06/23	AJ	AA



DESIGNED BY  
REVIEWED BY  
CLIENT



**DOLYN CONSTRUCTION LTD.**  
1-888 LADY ELLEN PLACE  
OTTAWA, ON. K1Z 5L5

**exp.**  
exp Services Inc.  
1-416-368-1899 | F: +1-613-225-7330  
3055 Queenmarch Drive, Unit 100  
Ottawa, ON K2B 8H6  
Canada  
www.exp.com  
• BUILDINGS • EARTH & ENVIRONMENT • ENERGY • INDUSTRIAL • INFRASTRUCTURE • SUSTAINABILITY •

BASEPLAN	PROJECT	PROJECT NO.
AJ	KONSON WAREHOUSE 1485 UPPER CANADA STREET OTTAWA, ONTARIO.	OTT-22023462-AG
AJ		
AA		
AJ	POST-DEVELOPMENT STORM DRAINAGE PLAN	C400
AA		
AA		

P:\Projects\2023\111306\KONSON\DWG\111306-KONSON-1485-UPPER-CANADA-STREET-POST-DEVELOPMENT-STORM-DRAINAGE-PLAN.dwg  
 User: s1048441 (s1048441) 2023/09/13 11:13:36 AM  
 Plotter: HP DesignJet T1100e  
 Plot Date: 2023/09/13 11:13:36 AM  
 Plot Size: A1 (841x1190 mm)  
 Scale: 1:500  
 Plot Style: s1048441.ctb  
 Plot Path: P:\Projects\2023\111306\KONSON\DWG\111306-KONSON-1485-UPPER-CANADA-STREET-POST-DEVELOPMENT-STORM-DRAINAGE-PLAN.dwg  
 Plot Sheet: 1 of 1