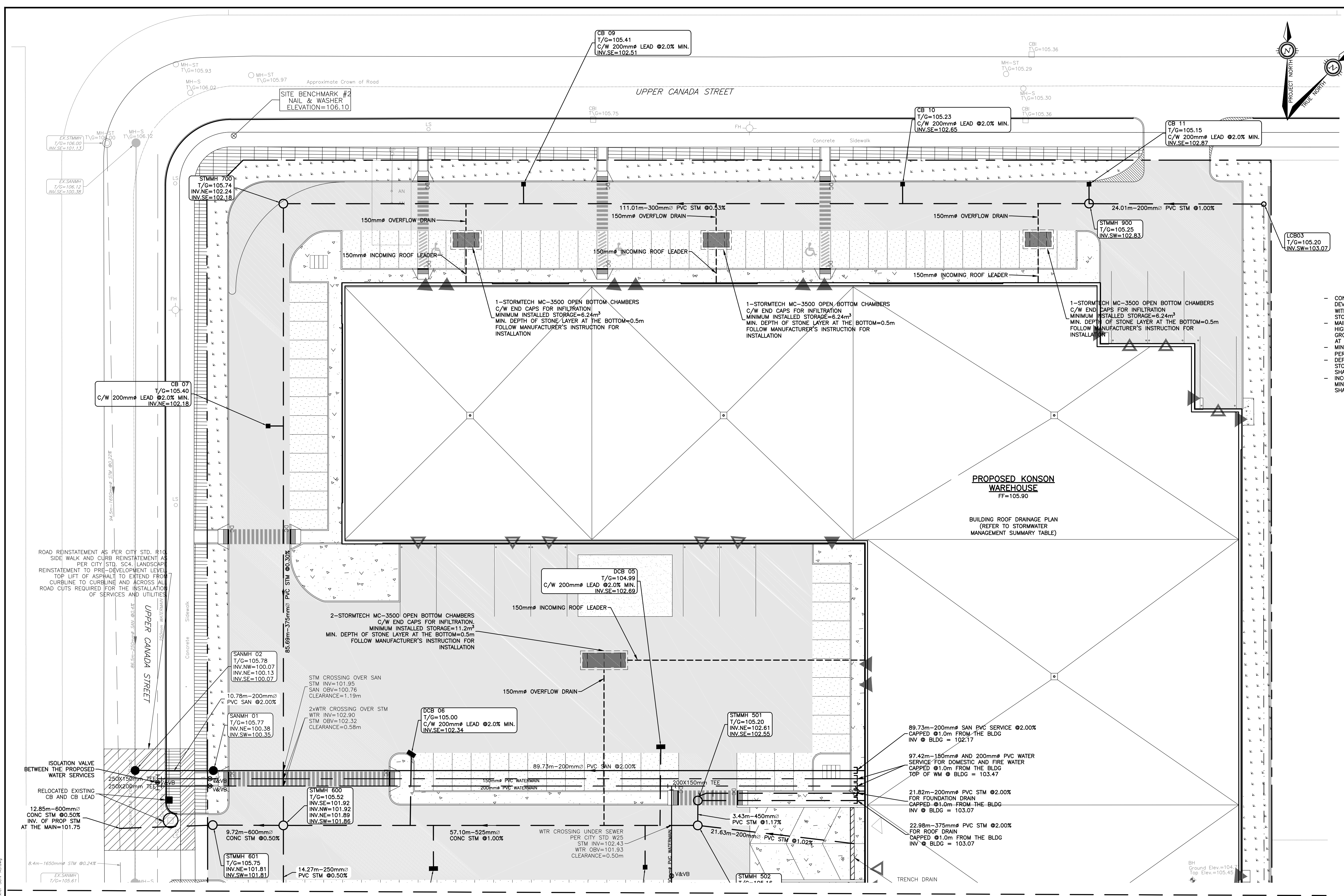
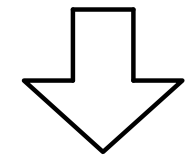


**ADDITIONAL SERVICING NOTES**

- CONSTRUCT STORMTECH CHAMBERS AND ADJACENT WORKS NEAR THE END OF THE DEVELOPMENT, AFTER BUILDING IS CONSTRUCTED. NATIVE MATERIAL AT INTERFACE WITH FILTRATION LAYER TO BE SCARIFIED/RACKED PRIOR TO INSTALLATION OF CLEAR STONE.
- MAINTAIN AT LEAST 1.0m CLEARANCE BETWEEN THE BOTTOM OF STONE LAYER AND HIGH GROUND WATER TABLE. GEOTECHNICAL REPORT PREPARED BY PATERSON GROUP DATED JANUARY 10, 2023 NOTES THE GROUNDWATER ELEVATION ~102.46m AT THE BOREHOLES NEAR THE PROPOSED STORMTECH CHAMBER LOCATIONS.
- MINIMUM PERIMETER STONE ON THE SIDES AND ON TOP OF THE CHAMBERS ARE AS PER MANUFACTURER'S INSTRUCTIONS.
- DEPTH OF STONE BELOW THE CHAMBERS TO BE AT LEAST 0.5m. THE BOTTOM STONE GRADATION SHOULD BE CHOSEN TO PROVIDE HIGH INFILTRATION RATES AND SHALL BE PROVIDED BY THE MANUFACTURER.
- INCOMING ROOF LEADERS AND OVER FLOW DRAINS SHALL BE MIN. 150mmø LAID AT MIN. 2.0% SLOPE. THE PIPE MATERIAL AND CONNECTION DETAILS WITH THE CHAMBER SHALL BE PROVIDED BY THE MANUFACTURER.



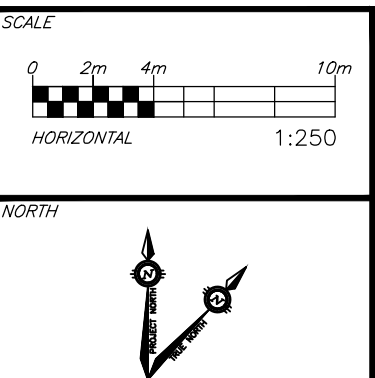
CONTINUE ON DWG# C102



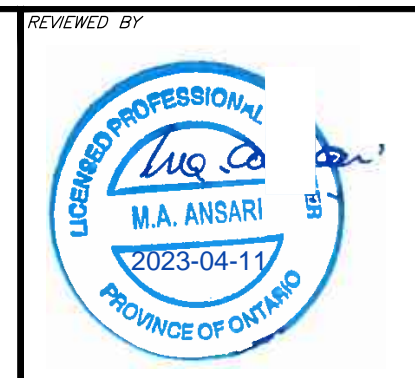
**CAUTION**  
THE POSITION OF ALL POLE LINES, CONDUITS, WATERMANS, SEWERS AND OTHER UNDERGROUND AND OVERGROUND UTILITIES AND STRUCTURES IS NOT NECESSARILY SHOWN ON THE CONTRACT DRAWINGS, AND WHERE SHOWN, THE ACCURACY OF THE POSITION OF SUCH UTILITIES AND STRUCTURES IS NOT GUARANTEED. BEFORE STARTING WORK, DETERMINE THE EXACT LOCATION OF ALL SUCH UTILITIES AND STRUCTURES AND ASSUME ALL LIABILITY FOR DAMAGE TO THEM.

**NOT FOR CONSTRUCTION**

REV	REVISION DESCRIPTION	DATE	BY	APPR
1	ISSUED FOR SPC	04/06/23	AJ	AA



DESIGNED BY  
REVIEWED BY



CLIENT  
**DOLYN CONSTRUCTION LTD.**  
1-888 LADY ELLEN PLACE  
OTTAWA, ON. K1Z 5L5

ROLE	NAME
DESIGN	AJ, AS
CHECKED	AA
CAD	AJ, AS
PROJECT MANAGER	AA
APPROVED	AA

PROJECT  
**KONSON WAREHOUSE**  
1485 UPPER CANADA STREET  
OTTAWA, ONTARIO.

TITLE  
**SITE SERVICING PLAN-1**

DRAWING NO.  
**C101**

PROJECT No.  
OTT-22023462-A0

SURVEY  
AOV

DATE  
01/10/2023

??????