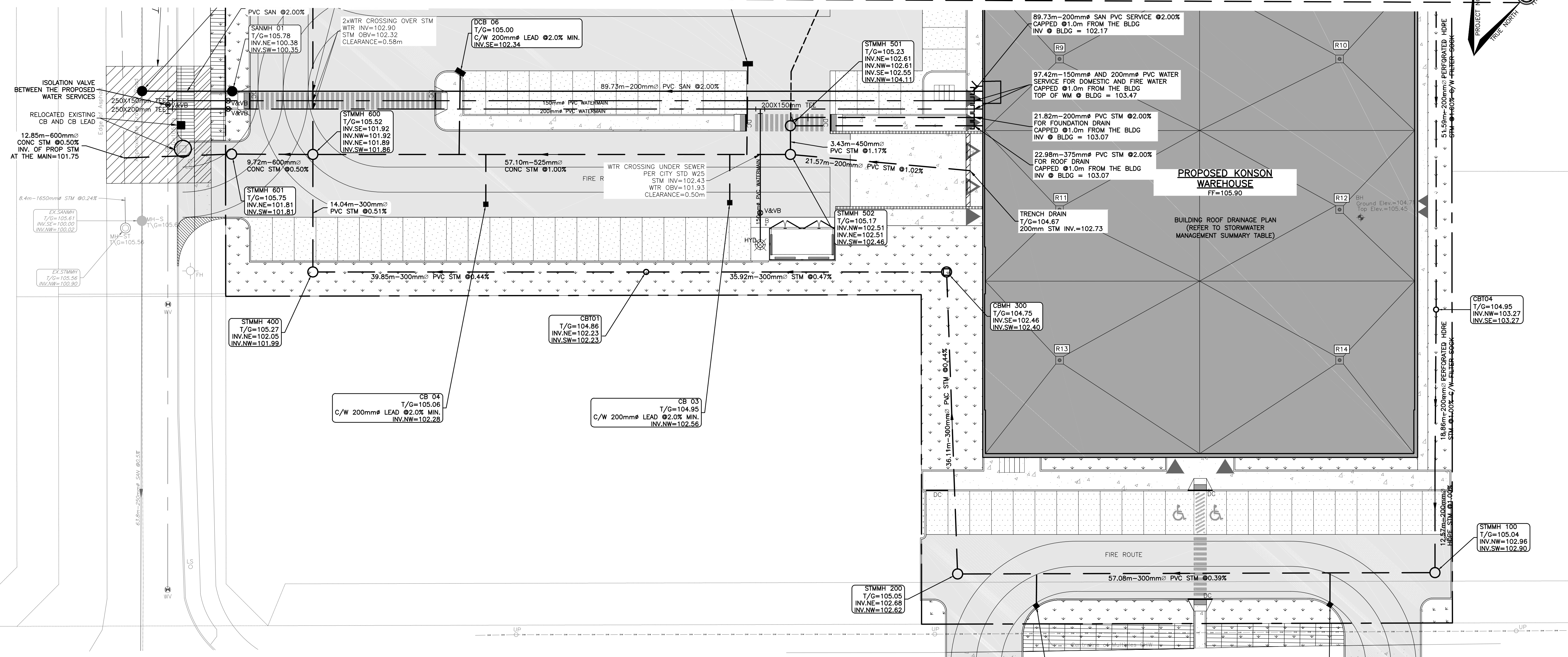
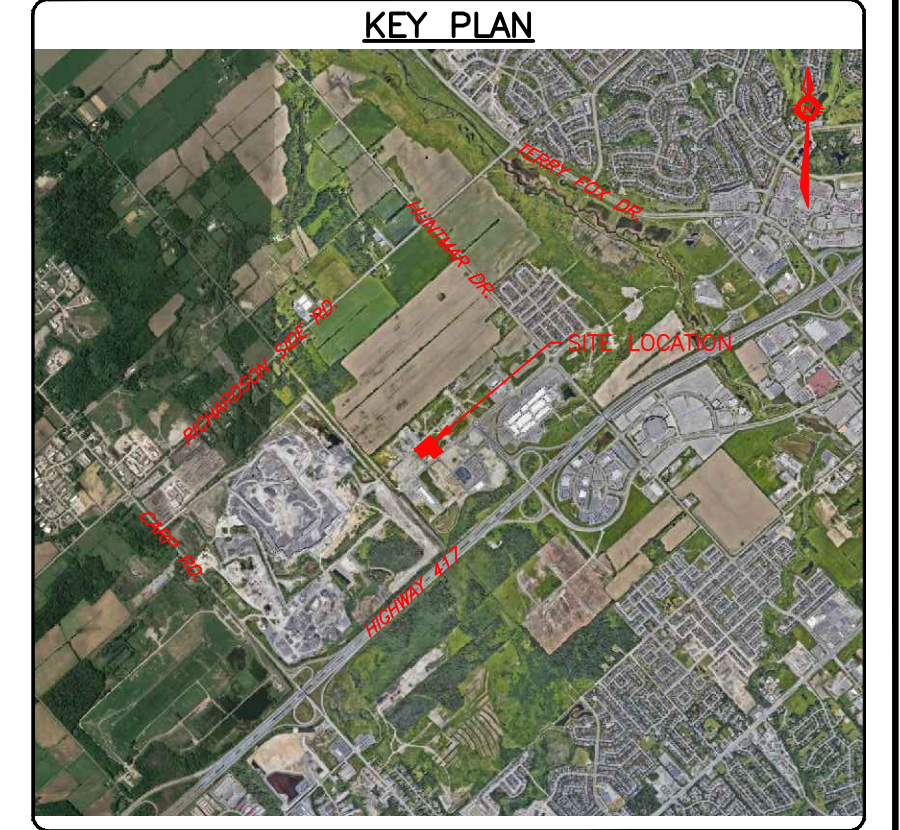
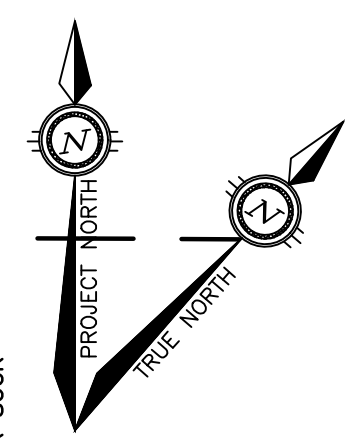
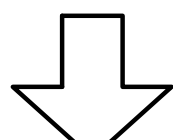


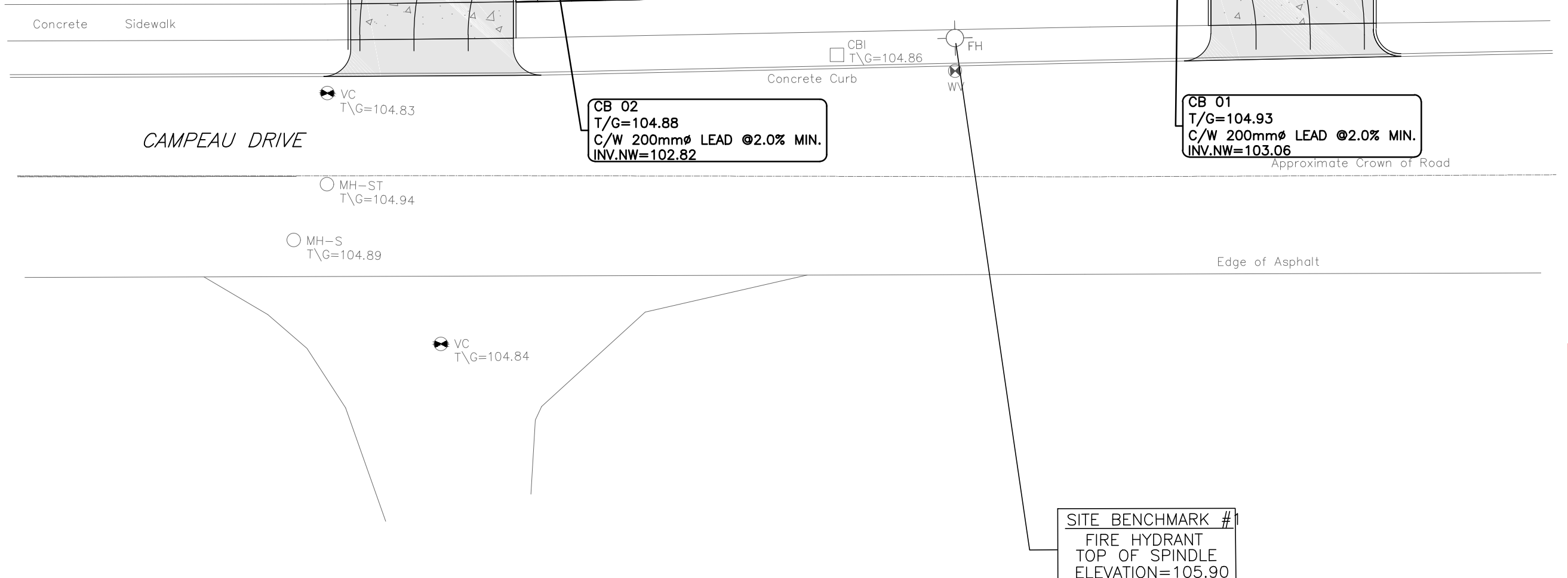
CONTINUE FROM DWG# C101



STRUCT #	TOP OF GRATE	INVERTS	REFERENCE	FRAME	COVER
CBT01	T/G=104.86	NE. IN=102.23 (300mm) SW. OUT=102.23 (300mm)	S30	S30	S30
CBT03	T/G=104.94	NW. IN=103.79 (200mm) SE. OUT=103.79 (200mm)	S30	S30	S30
CBT04	T/G=104.95	NW. IN=103.27 (200mm) SE. OUT=103.27 (200mm)	S30	S30	S30
CBE02	T/G=105.21	SE. OUT=104.20 (200mm)	S31	S31	S31
CB01	T/G=104.93	NW. OUT=103.06 (200mm)	OPSD 705.010	S19	S19
CB02	T/G=104.88	NW. OUT=102.82 (200mm)	OPSD 705.010	S19	S19
CB03	T/G=104.95	NW. OUT=102.56 (200mm)	OPSD 705.010	S19	S19
CB04	T/G=105.06	NW. OUT=102.28 (200mm)	OPSD 705.010	S19	S19
DCB05	T/G=104.99	SE. OUT=102.69 (200mm)	OPSD 705.020	S19	S19
DCB06	T/G=105.00	SE. OUT=102.34 (200mm)	OPSD 705.020	S19	S19
CB07	T/G=105.43	NE. OUT=102.18 (200mm)	OPSD 705.010	S19	S19
CB08	T/G=105.63	NW. OUT=102.45 (200mm)	OPSD 705.010	S19	S19
CB09	T/G=105.40	SE. OUT=102.51 (200mm)	OPSD 705.010	S19	S19
CB10	T/G=105.25	SE. OUT=102.65 (200mm)	OPSD 705.010	S19	S19
CB11	T/G=105.15	SE. OUT=102.87 (200mm)	OPSD 705.010	S19	S19
STMH100	T/G=105.04	NW. IN=102.96 (200mm) SW. OUT=102.90 (300mm)	OPSD 701.010	S25	S24.1
STMH200	T/G=105.05	NE. IN=102.68 (300mm) NW. OUT=102.62 (300mm)	OPSD 701.010	S25	S24.1
STMH300	T/G=104.75	SE. IN=102.46 (300mm) SW. OUT=102.40 (300mm)	OPSD 701.010	S25	S28.1

MH #	TOP OF GRATE	INVERTS	REFERENCE	FRAME	COVER
SANMH01	T/G=206.74	NE. IN=100.21 (250mm) SW. OUT=100.18 (250mm)	OPSD 701.010	S25	S24
SANMH02	T/G=105.78	NW. IN=100.07 (250mm) NE. IN=100.07 (250mm) SE. OUT=100.07 (250mm)	OPSD 701.010	S25	S24

STRUCT #	TOP OF GRATE	INVERTS	REFERENCE	FRAME	COVER
STMH400	T/G=105.27	NE. IN=102.05 (300mm) NW. OUT=101.99 (300mm)	OPSD 701.010	S25	S24.1
STMH501	T/G=105.20	NE. IN=102.61 (375mm) SE. OUT=102.55 (450mm)	OPSD 701.010	S25	S24.1
STMH502	T/G=105.16	NW. IN=102.51 (450mm) NE. IN=102.51 (200mm) SW. OUT=102.46 (525mm)	OPSD 701.010	S25	S24.1
STMH600	T/G=105.52	SE. IN=101.92 (300mm) NW. IN=101.92 (375mm) NE. IN=101.89 (525mm) SW. OUT=101.86 (600mm)	OPSD 701.010	S25	S24.1
STMH601	T/G=105.75	NE. IN=101.81 (600mm) SW. OUT=101.81 (600mm)	OPSD 701.010	S25	S24.1
STMH700	T/G=105.74	NE. IN=102.24 (300mm) SE. OUT=102.18 (375mm)	OPSD 701.010	S25	S24.1
STMH800	T/G=105.53	NE. IN=102.56 (300mm) SW. OUT=102.53 (300mm)	OPSD 701.010	S25	S24.1
STMH900	T/G=105.30	SE. IN=102.98 (200mm) SW. OUT=102.88 (300mm)	OPSD 701.010	S25	S24.1



APPROVED
By Kersten Nitsche at 10:05 am, Dec 02, 2024

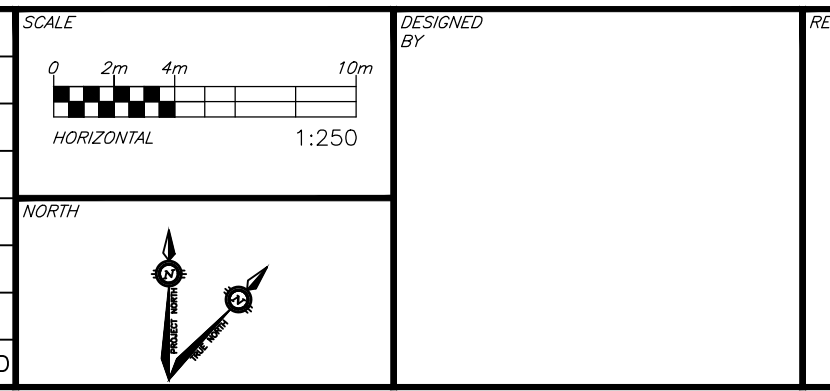
Kersten Nitsche

KERSTEN NITSCHKE, MCIP RPP
MANAGER (A), DEVELOPMENT REVIEW WEST
PLANNING, DEVELOPMENT AND BUILDING SERVICES
DEPARTMENT, CITY OF OTTAWA

CAUTION
THE POSITION OF ALL POLE LINES, CONDUITS, WATERMANS, SEWERS AND OTHER UNDERGROUND AND OVERGROUND UTILITIES AND STRUCTURES IS NOT NECESSARILY SHOWN ON THE CONTRACT DRAWINGS, AND WHERE SHOWN, THE ACCURACY OF THE POSITION OF SUCH UTILITIES AND STRUCTURES IS NOT GUARANTEED. BEFORE STARTING WORK, DETERMINE THE EXACT LOCATION OF ALL SUCH UTILITIES AND STRUCTURES AND ASSUME ALL LIABILITY FOR DAMAGE TO THEM.

NOT FOR CONSTRUCTION

REV	REVISION DESCRIPTION	DATE	BY	APPD
3	RE-ISSUED FOR SPC	12/15/23	AJ	AJ
2	RE-ISSUED FOR SPC	09/12/23	AJ	AA
1	ISSUED FOR SPC	04/06/23	AJ	AA



DOLYN CONSTRUCTION LTD.
1-888 LADY ELLEN PLACE
OTTAWA, ON. K1Z 5L5

exp Services Inc.
1-416-368-1899 | 1-613-225-7330
2025 Construction Drive, Unit 100
Ottawa, ON K2B 8R6
Canada
www.exp.com

• BUILDINGS • EARTH & ENVIRONMENT • ENERGY •
• INDUSTRIAL • INFRASTRUCTURE • SUSTAINABILITY •

PROJECT	NO.
OTT-22023462-AD	AD
DATE	01/10/2023
DRAWING NO.	C102