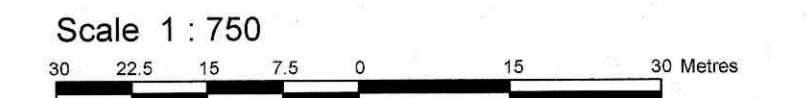


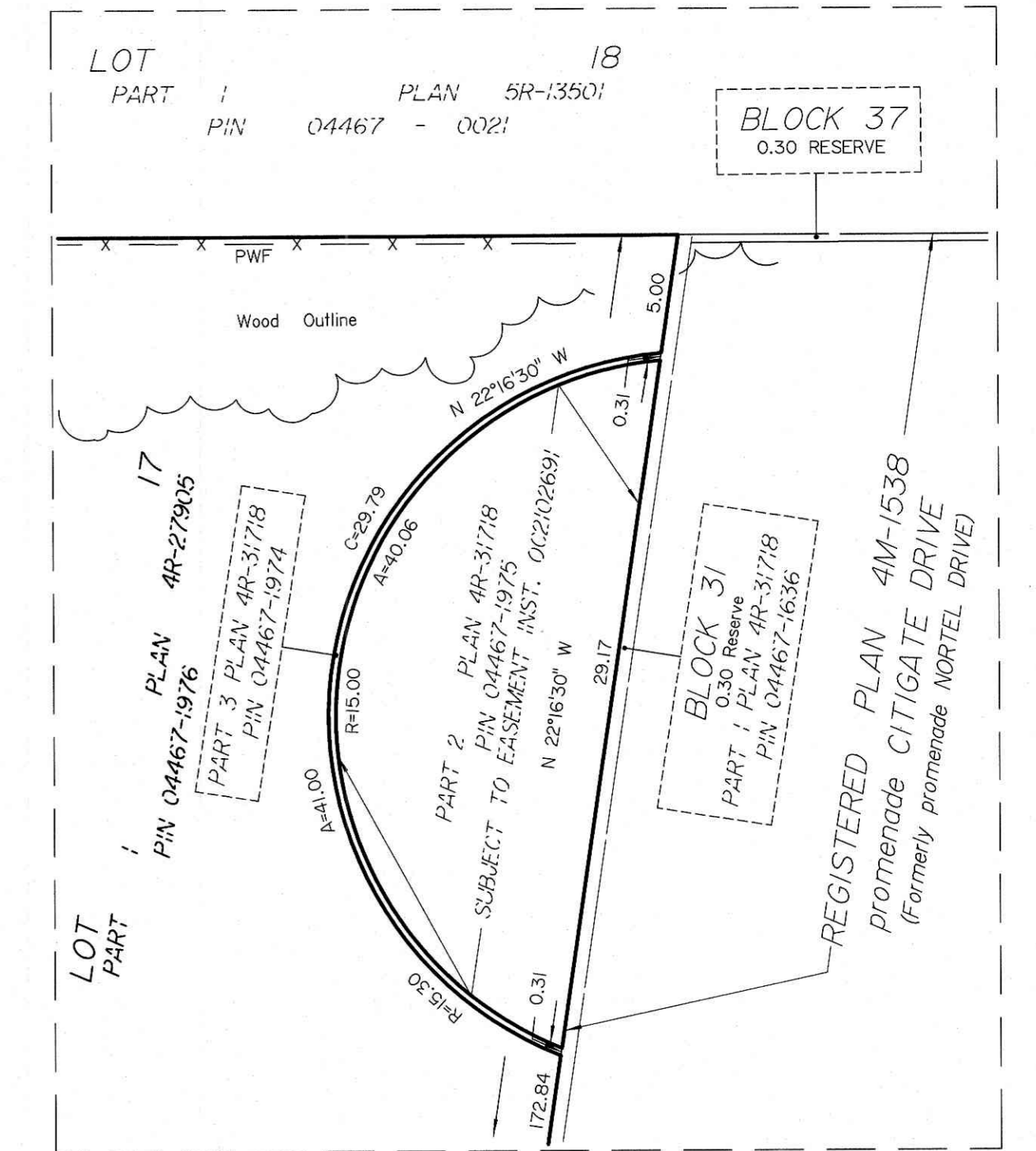
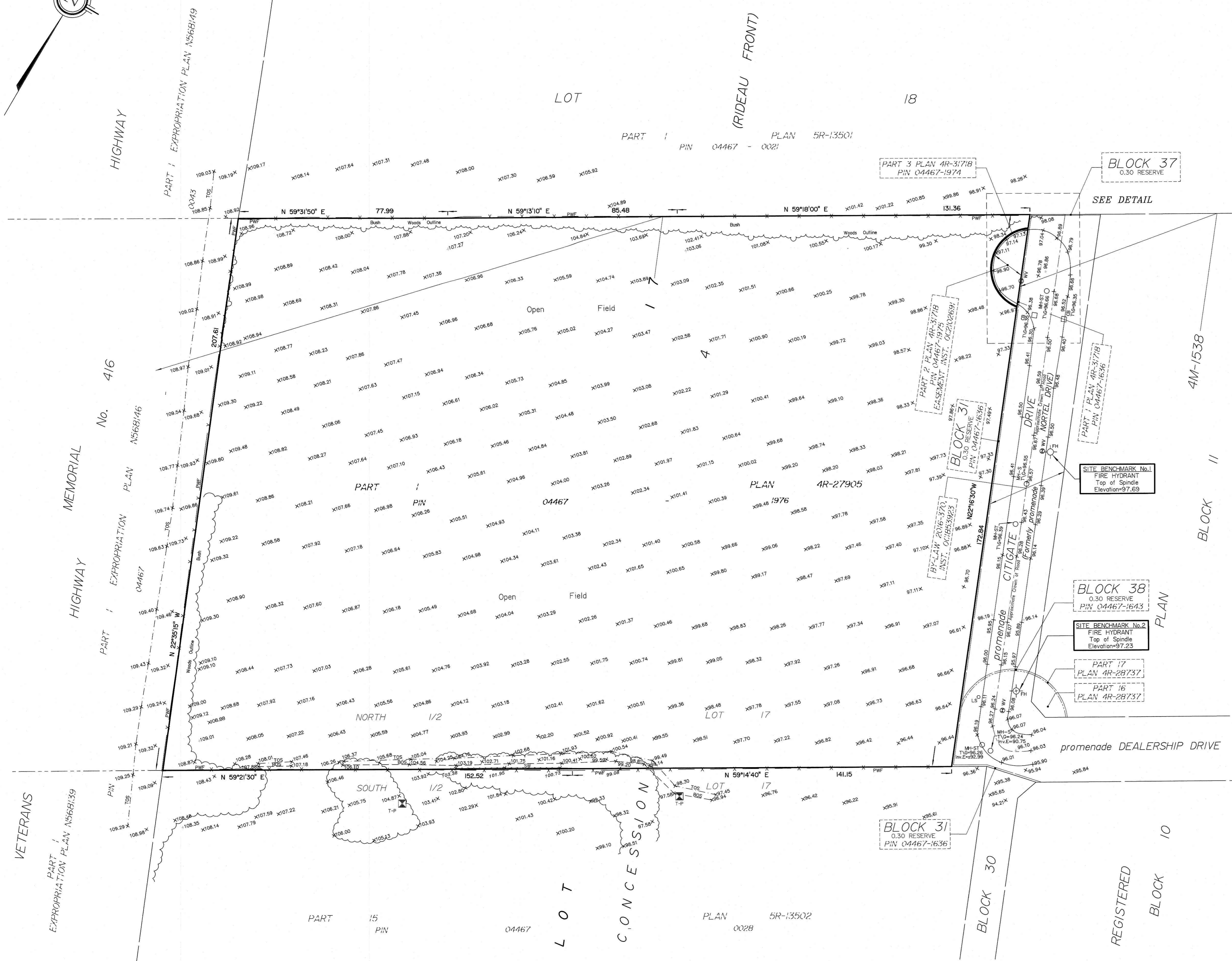
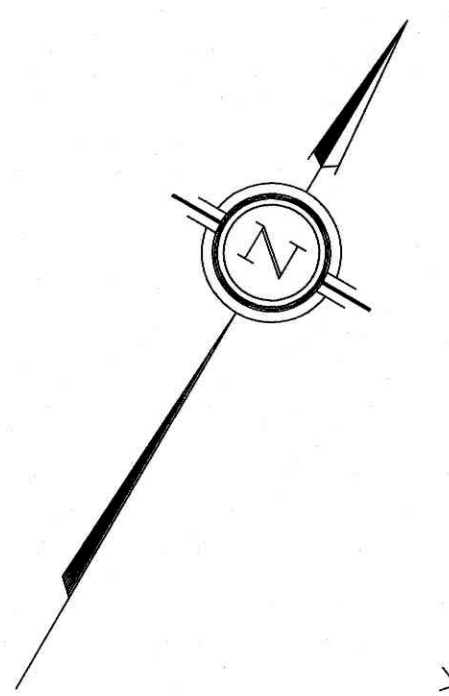
TOPOGRAPHICAL PLAN OF  
**575 DEALERSHIP DRIVE**  
 CITY OF OTTAWA

Prepared by Annis, O'Sullivan, Vollebek Ltd.  
 Field Work Completed July 10, 2021



Metric  
 DISTANCES SHOWN ON THIS PLAN ARE IN METRES AND  
 CAN BE CONVERTED TO FEET BY DIVIDING BY 0.3048

July 29, 2021  
 Date  
 E. H. Herweyer  
 Ontario Land Surveyor



DETAIL  
 Scale 1:250

Caution  
 This is NOT a Plan of Survey and shall not be used except for the purpose indicated in the title block.

SITE AREA = 6.0439 Ha.

BOUNDARY INFORMATION COMPILED FROM  
 REGISTERED PLAN 4M-1538, PLANS 4R-27905, PLAN 4R-31718  
 AND SURVEY RECORDS.

Notes & Legend

Denotes	
○ FH	Fire Hydrant
⊗ T-P	Test Pit
⊗ W	Water Valve
T/G	Top of Gate
Inv.E	Invert East
CE	Location of Ground Elevations
BOS	Bottom of Slope
TOS	Top of Slope
SW	Stone Wall
EP	Edge of Pavement
MF	Metal Fence
PWF	Post and Wire Fence
○ FP	Flag Pole
○ LS	Light Standard
○ MH-ST	Maintenance Hole (Storm Sewer)
○ MH-S	Maintenance Hole (Sanitary)
— ST —	Underground Storm Sewer
— S —	Underground Sanitary Sewer
— W —	Underground Water
+ 65.00	Location of Elevations
+ 65.00	Top of Wall Elevation
—	Property Line

ELEVATION NOTES

- Elevations shown are geodetic and are referred to the CGVD28 geodetic datum, derived from control monument No. 00820118014, having a published elevation of 103.306m.
- It is the responsibility of the user of this information to verify that the job benchmark has not been altered or disturbed and that its relative elevation and description agrees with the information shown on this drawing.

UTILITY NOTES

- This drawing cannot be accepted as acknowledging all of the utilities and it will be the responsibility of the user to contact the respective utility authorities for confirmation.
- A field location of underground plant by the pertinent utility authority is mandatory before any work involving breaking ground, probing, excavating etc.
- Only visible surface utilities were located.
- Sanitary and Storm Sewer grades and inverts were taken from a Plan by Farley, Smith & Denis Surveying Ltd. dated June 8, 2018.