

CITY DETAILS

Related details from City of Ottawa Standard Tender Documents Volume No. 2 Standard Detail Drawings.

- F7. Tree Preservation Protection Fence
- SC4. Typical Concrete Sidewalk in Boulevard
- SC5. Sidewalk Construction Joints

NOVATECH DETAILS

Found on Sheet L2.

- D1. Standard Deciduous Tree Planting
- D2. Shrub and Perennial Planting
- D3. Reforestation
- D4. Bike Layout

LEGEND

- PROPERTY LIMIT
- PROPOSED CONCRETE
- PROPOSED DECIDUOUS TREE
- PROPOSED SHRUBS
- PROPOSED SHRUB REFORESTATION
- SPECIES (SEE PLANT LIST)
- QUANTITY
- RETAINING WALL - REFER TO CIVIL DRAWINGS
- EXISTING TREES TO BE PRESERVED
- TREE PROTECTION FENCE

GENERAL

1. Read and interpret this drawing/ drawing set in conjunction with all the contract details and specifications, including related civil, utility, structural, architectural, mechanical, electrical, environmental, geotechnical, and survey information.
2. The Contractor is to determine the exact location, size, material, and elevation of all existing utilities prior to commencing construction. Protect and assume responsibility for all existing utilities regardless of being shown on the drawings.
3. It is essential to use the plans and details in conjunction with the specifications and notes.
4. Do not scale drawings. Work to dimensions only.
5. Protect all existing and retained vegetation for the duration of construction according to the contract details and specifications.
6. Reinstatement all areas and items damaged or disturbed, beyond the Limit of Work, because of construction activities, including but not limited to construction staging areas, haul roads, stockpile areas, etc. to the satisfaction of the Consultant. Unless otherwise noted, Contractor is to reestablish all areas to pre-construction condition or better to the satisfaction of the Contract Administrator.

PLANTING

1. Plant material to be No. 1 Grade and is to comply with Canadian Standards for Nursery Stock (latest edition) published by the Canadian Nursery Landscape Association. Use structurally sound plant material with strong fibrous root system free of disease, defects, and injuries. Use trees with straight trunks, well and characteristically branched for species. Obtain approval from consultant of plant material at source prior to digging. All trees and shrubs to be container grown, potted, W/B or B/B, as indicated on Plant List. Bare root plants are only acceptable for certain species and as approved by the Landscape Architect.
2. Plant material substitutions are not permitted without the written approval from the Consultant, with 48 hours notice, prior to shipping plant material.
3. Plant locations are schematic/ approximate only. Contractor is to stake out locations on site for approval by the Landscape Architect prior to installation.
4. The illustrated number of plants shown in the Planting Plan supersedes the estimated number in the Planting Plan. Contractor to report any discrepancies to the Landscape Architect prior to installation. Contractor will assume full responsibility if the Landscape Architect is not notified.
5. Ensure trees are thoroughly watered following planting. Monitor material and ensure adequate moisture until acceptance.
6. In heavy clay or poorly drained soils, set root ball with root collar 75-100mm higher than finished grade.
7. Approved topsoil depths are as follows:
 - a. Plant Beds - 450mm continuous depth. Applies to shrubs, perennials, vines, and groundcovers.
 - b. Sod/ Seed Areas - 100mm depth.
 - c. Reforestation - 300mm depth.
8. Apply the following mineral fertilizer unless soil tests show other requirements:
 - a. Plant Beds - (8-32-16), i.e. 8% Nitrogen, 32% Phosphorus, 16% Potash per manufacturer specifications.
 - b. Sod Areas - (8-32-16), i.e. 8% Nitrogen, 32% Phosphorus, 16% Potash at a rate of 350kg/ha.
9. Where applicable, for any plant areas with a mix of species/ cultivars notes, Contractor is to cluster like plants in groups of 3-5 and evenly distribute these in the noted area.

NOTE: See sheet 119123-TCR for Tree Protection Notes

SEED MIX AND APPLICATION

For areas steeper than 3:1, refer to grading plan for slope stabilization measure details.

In addition to the specified seed mixes, all applications are to include a nurse crop as noted.

NURSE CROP
Annual Ryegrass
Seeding Rate: 25kg/hectare

SEED MIX A
FUTURA BOULEVARD SEED MIX BY DLF PICKSEED
Seeding Rate: 150kg/hectare

SEED MIX B
STEEP SLOPE SEED MIX BY DLF PICKSEED
Seeding Rate: 34kg/hectare

TREE PLANTING IN SENSITIVE CLAY

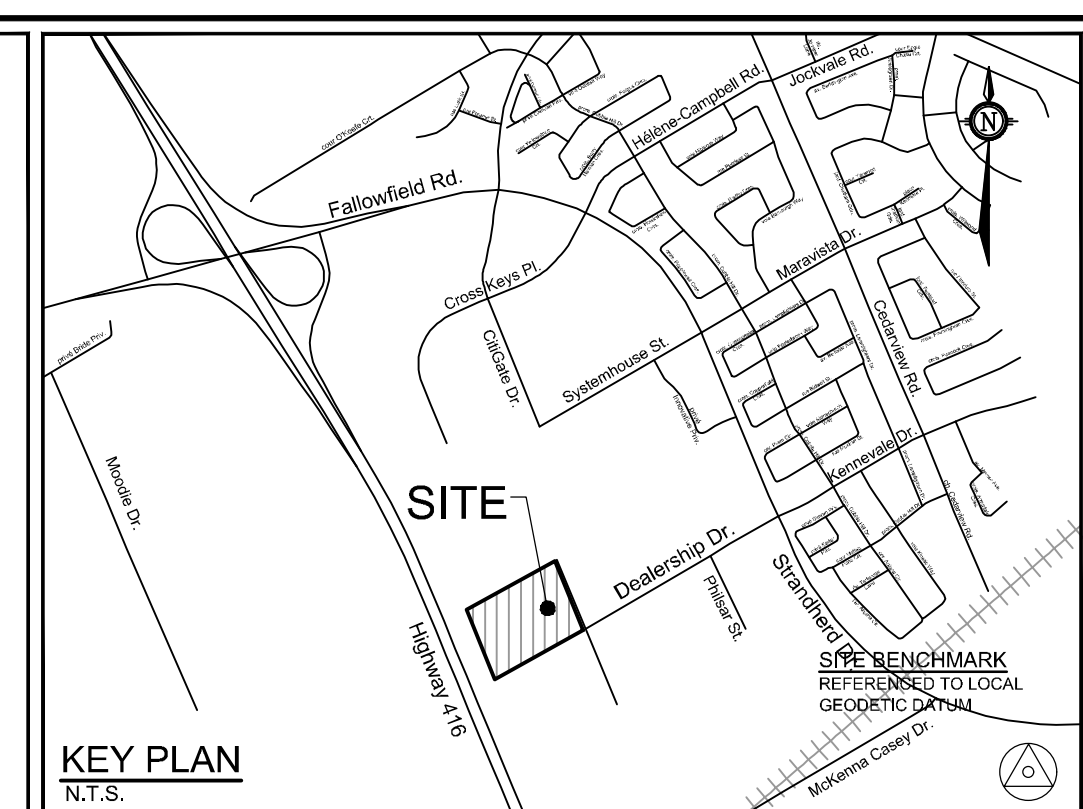
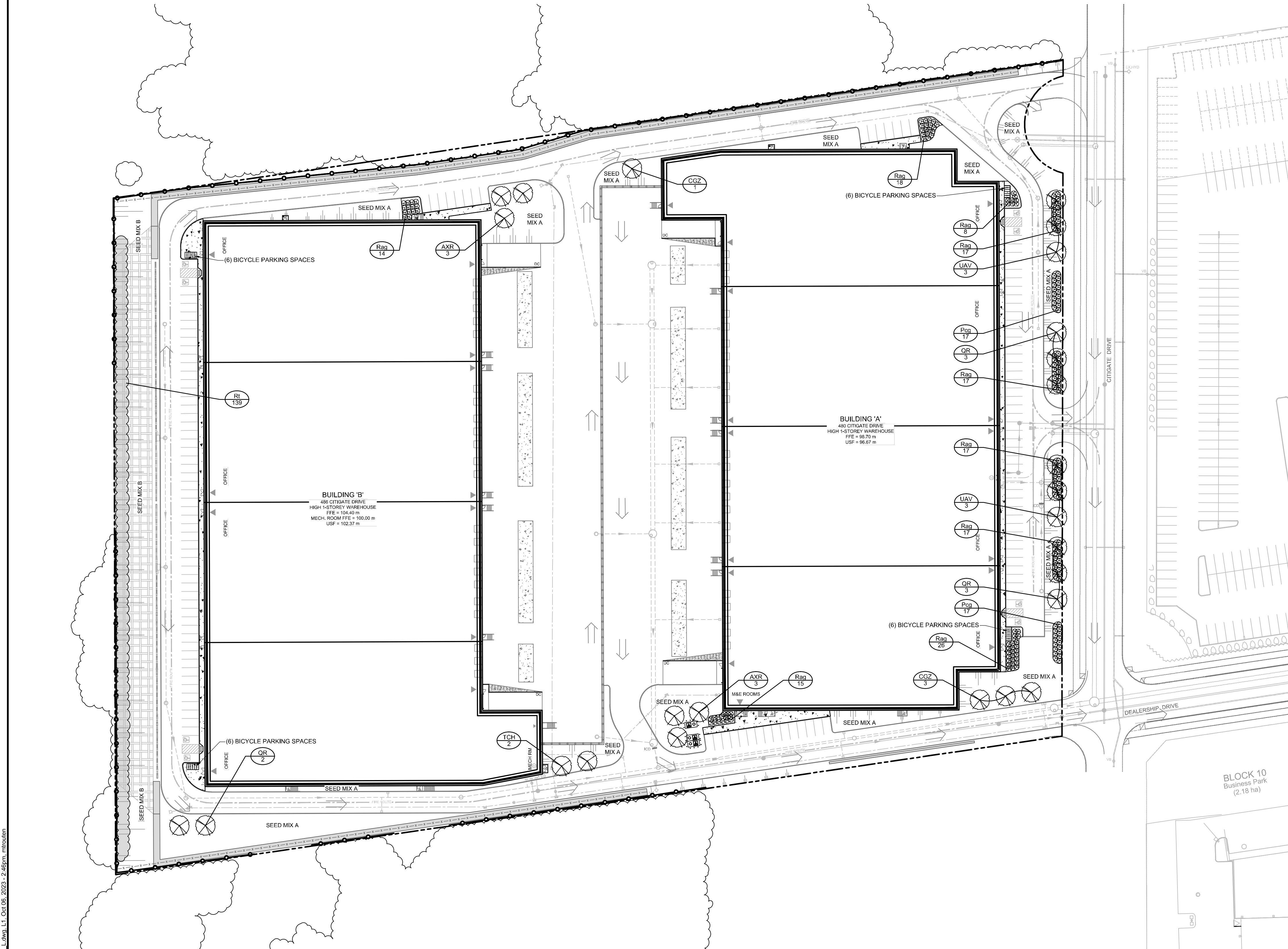
1. The landscape plans have been developed in accordance with the Geotechnical Report: Geotechnical Investigation prepared by Paterson Group, January 11, 2023. Refer to Section 6.8 Landscape Considerations.
2. The following City of Ottawa clay soils guideline applies: Guidelines for Tree Planting in Sensitive Marine Clay Soils (2017).
3. The soil volumes provided are sufficient for a reasonable chance of tree survival. Unless otherwise noted, all new trees on City property meet the minimum soil volume requirements of the following, based on a depth of 1.5m below finished grade, and subtracting the volume of utility trenches.
 - a. Small tree (mature height up to 7.5m) - 25m³/ minimum soil volume provided.
 - b. Medium tree (mature height 7.5-14m) - 30m³/ minimum soil volume provided.

Where trees share a continuous greenspace:

- a. Two (2) small trees - 15m³/ minimum soil volume provided per tree.
- b. Two (2) medium trees - 18m³/ minimum soil volume provided per tree.

PLANT LIST

KEY	QTY	BOTANICAL NAME	COMMON NAME	SIZE	COND	SPACING
Deciduous Trees - Large Mature Size (Greater than 14m)						
QR	8	<i>Quercus rubra</i>	Red Oak	50mm Cal	WB	As Shown
UAV	8	<i>Ulmus americana 'Valley Forge'</i>	Valley Forge Elm	50mm Cal	WB	As Shown
Deciduous Trees - Small Mature Size (Under 6m Height)						
AXR	6	<i>Amelanchier x grandiflora 'Robin Hill'</i>	Robin Hill Serviceberry	50mm Cal	WB	As Shown
CGZ	4	<i>Crataegus crus-galli 'Cruzam'</i>	Crusader Hawthorn	50mm Cal	WB	As Shown
TCH	2	<i>Tilia cordata 'Halka'</i>	Summer Sprite Linden	50mm Cal	WB	As Shown
Deciduous Shrubs						
Pcg	34	<i>Physocarpus opulifolius 'Centre Glow'</i>	Centre Glow Ninebark	60cm Ht.	PT	As Shown
Rag	149	<i>Rhus aromatica 'Gro-Low'</i>	Gro-Low Fragrant Sumac	40cm Ht.	PT	As Shown
Rt	139	<i>Rhus typhina</i>	Staghorn Sumac	60cm Ht.	PT	2500mm O.C.



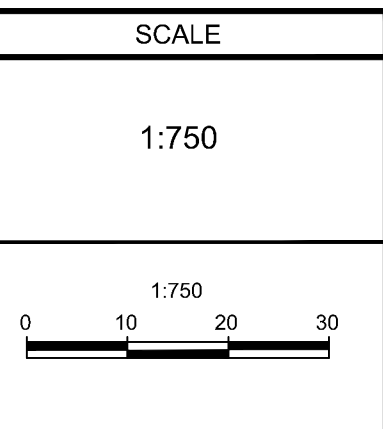
NORTH

KEY PLAN
N.T.S.

NOTE:
THE POSITION OF ALL POLE LINES, CONDUITS, WATERMANS, SEWERS AND OTHER UNDERGROUND AND OVERGROUND UTILITIES AND STRUCTURES IS NOT NECESSARILY SHOWN ON THE CONTRACT DRAWINGS, AND WHERE SHOWN, THE ACCURACY OF THE POSITION OF SUCH UTILITIES AND STRUCTURES IS NOT GUARANTEED. BEFORE STARTING WORK, DETERMINE THE EXACT LOCATION OF ALL SUCH UTILITIES AND STRUCTURES AND ASSUME ALL LIABILITY FOR DAMAGE TO THEM.

NOT FOR CONSTRUCTION

No.	REVISION	DATE	BY
2.	REVISED PER CITY COMMENTS	OCT 8/23	RGJ
1.	ISSUED FOR SITE PLAN	MAY 4/23	RGJ



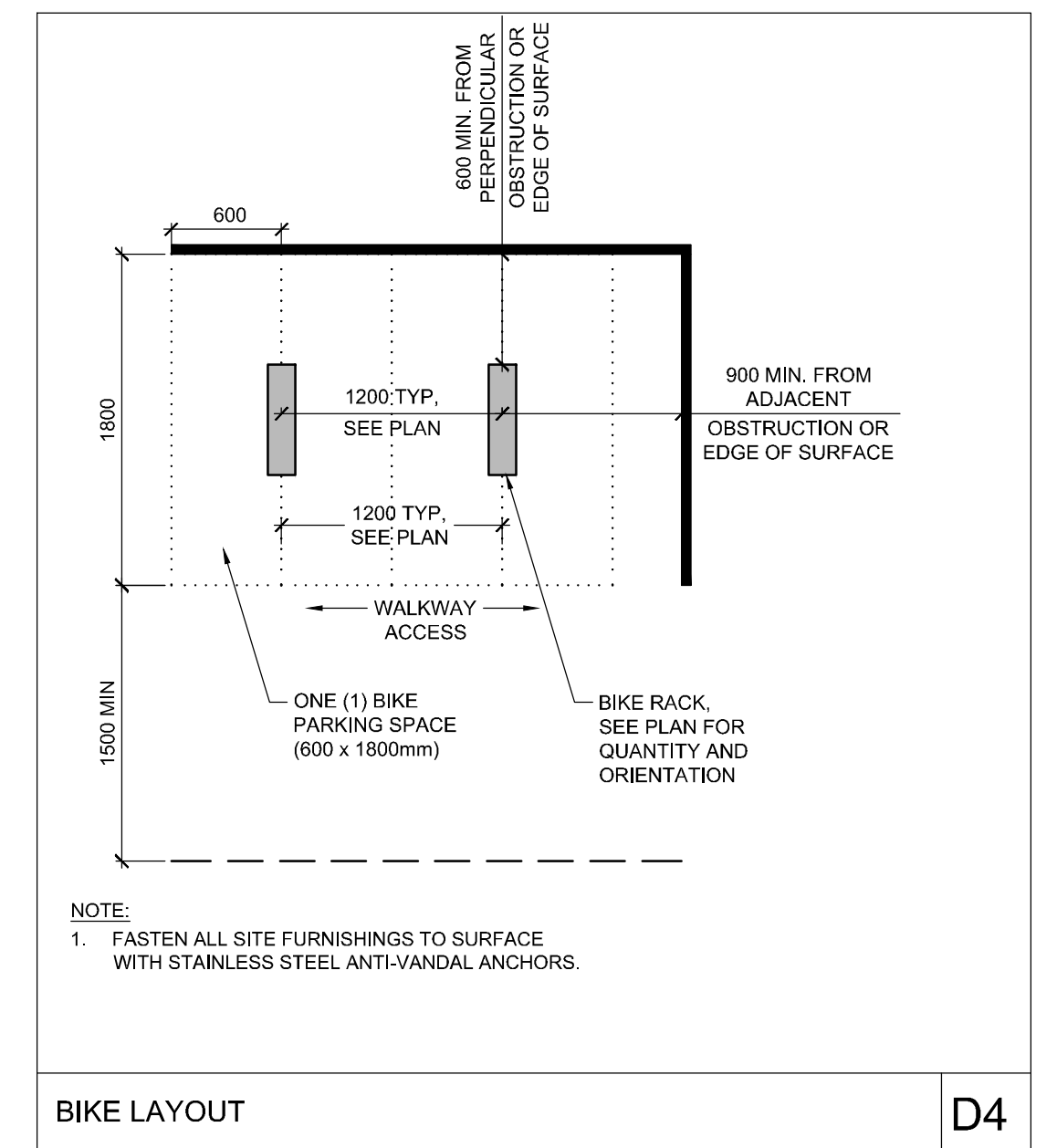
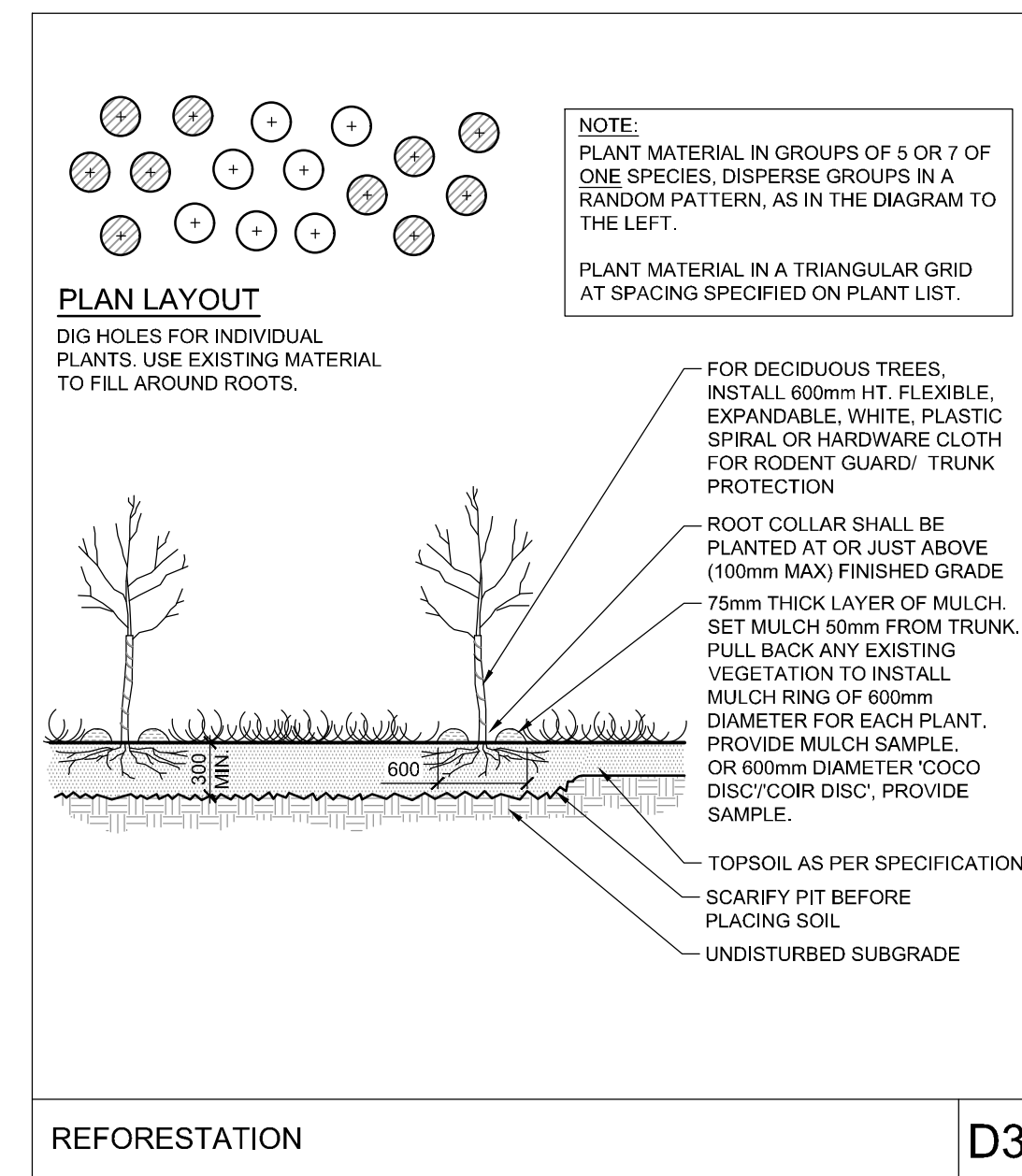
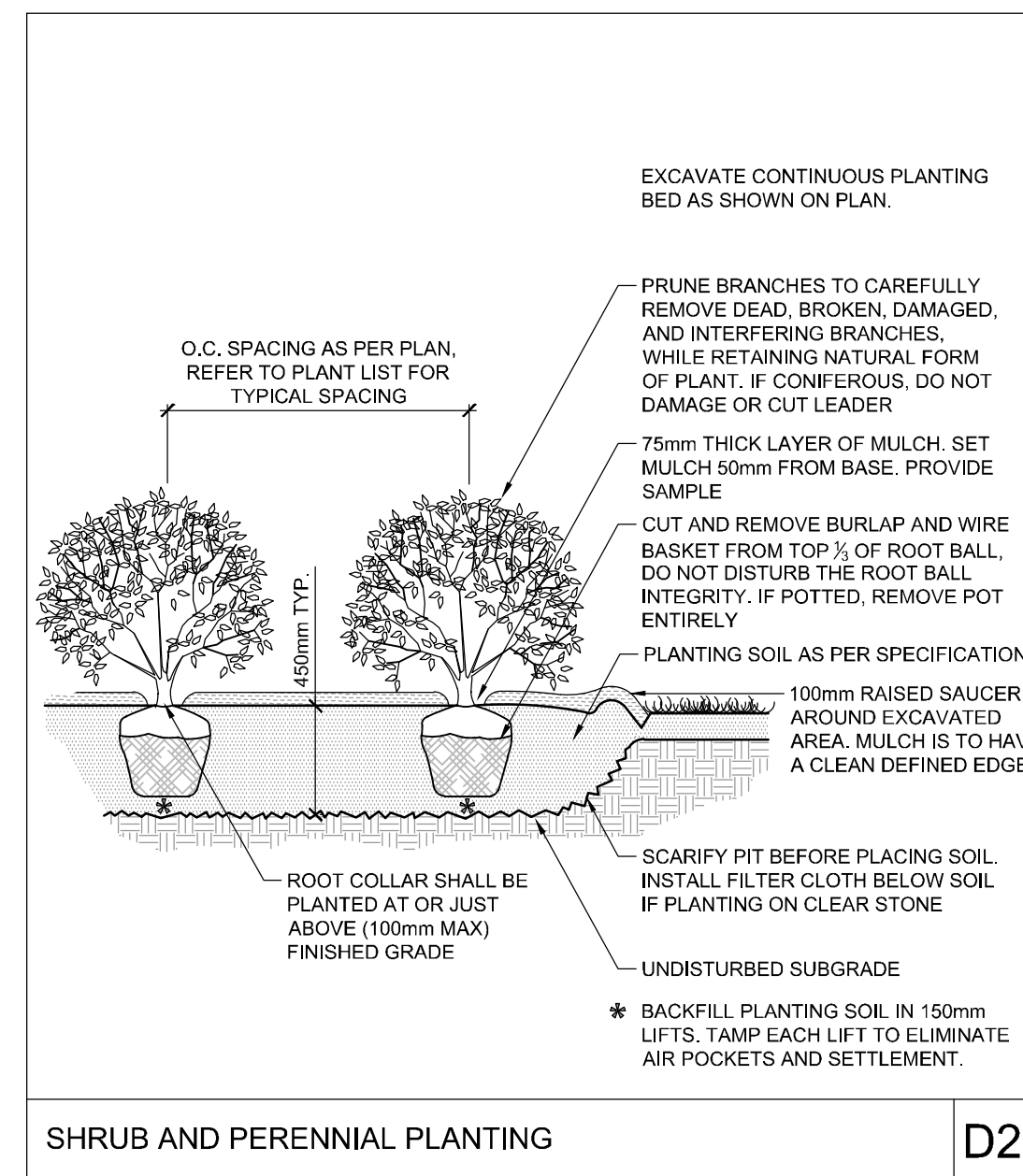
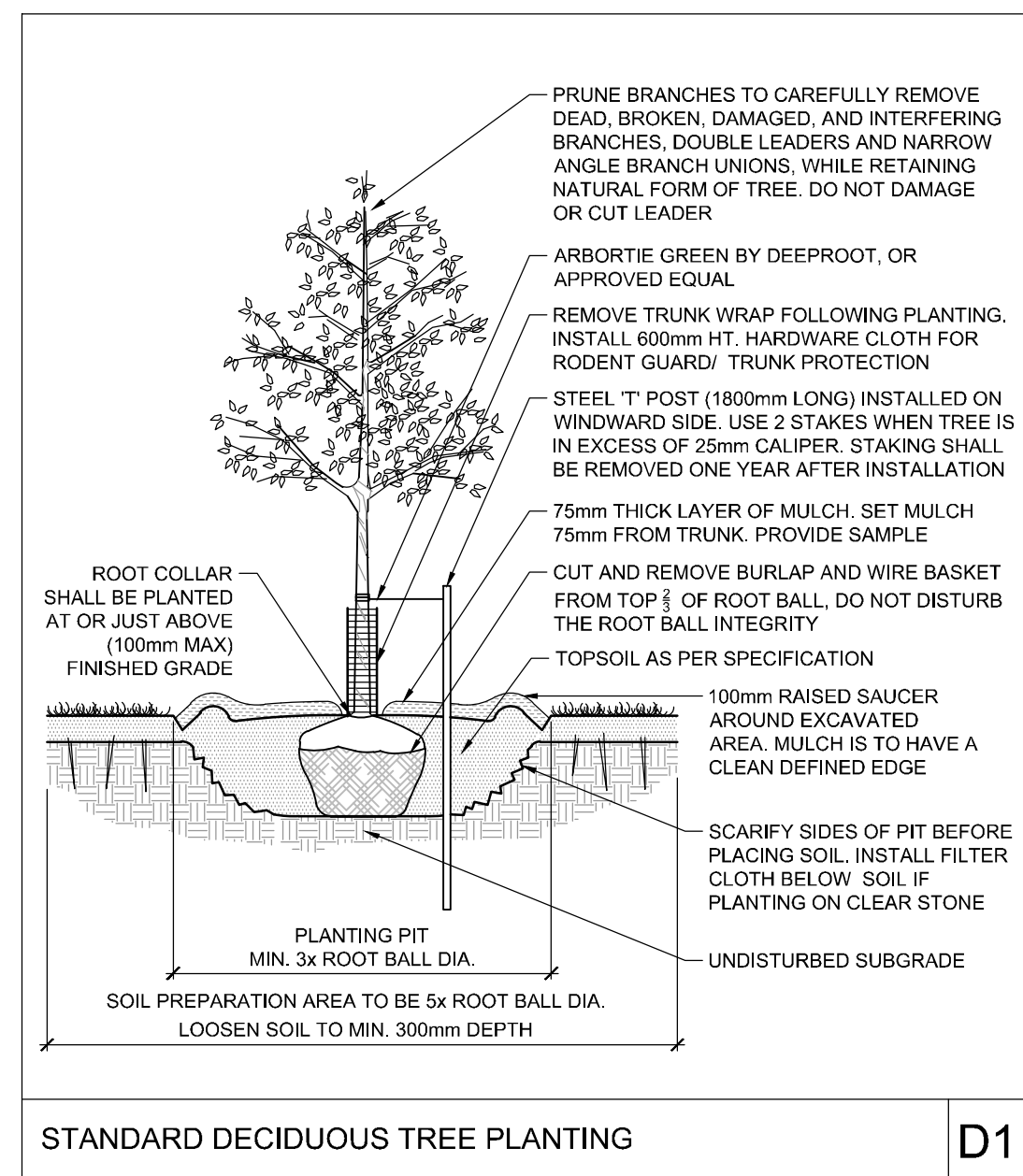
DESIGN	MJT
CHECKED	RGJ
DRAWN	MJT
CHECKED	RGJ
APPROVED	MJT

FOR REVIEW ONLY

NOVATECH
Engineers, Planners & Landscape Architects
Suite 200, 240 Michael Cowpland Drive
Ottawa, Ontario, Canada K2M 1P6
Telephone (613) 254-9643
Facsimile (613) 254-5867
Website www.novatech-eng.com

LOCATION CITY OF OTTAWA 575 DEALERSHIP DRIVE	PROJECT No. 119123-00
DRAWING NAME LANDSCAPE PLAN	REV # 2
	DRAWING No. 119123-L1

M:\2019\119123\CAD\Landscapes\1-Plan\119123_L_dwg_L1_Oct 06 2023 - 2:46pm.mxd



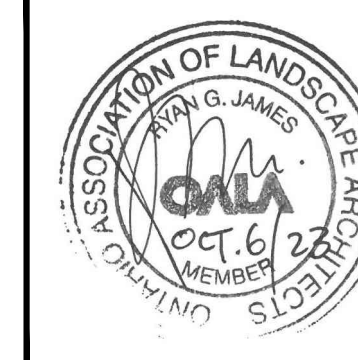
NOTE:
THE POSITION OF ALL POLE LINES, CONDUITS, WATERMANS, SEWERS AND OTHER UNDERGROUND AND OVERGROUND UTILITIES AND STRUCTURES IS NOT NECESSARILY SHOWN ON THE CONTRACT DRAWINGS, AND WHERE SHOWN, THE ACCURACY OF THE POSITION OF SUCH UTILITIES AND STRUCTURES IS NOT GUARANTEED. BEFORE STARTING WORK, DETERMINE THE EXACT LOCATION OF ALL SUCH UTILITIES AND STRUCTURES AND ASSUME ALL LIABILITY FOR DAMAGE TO THEM.

NOT FOR CONSTRUCTION

No.	REVISION	DATE	BY
2.	REVISED PER CITY COMMENTS	OCT 8/23	RGJ
1.	ISSUED FOR SITE PLAN	MAY 4/23	RGJ

SCALE	DESIGN
N.T.S.	MJT
	CHECKED RGJ
	DRAWN MJT
N.T.S.	CHECKED RGJ
	APPROVED MJT

FOR REVIEW ONLY



NOVATECH
Engineers, Planners & Landscape Architects
Suite 200, 240 Michael Cowpland Drive
Ottawa, Ontario, Canada K2M 1P6
Telephone (613) 254-9643
Facsimile (613) 254-5867
Website www.novatech-eng.com

LOCATION
CITY OF OTTAWA
575 DEALERSHIP DRIVE

DRAWING NAME
LANDSCAPE DETAILS

PROJECT No.	119123-00
REV	REV # 2
DRAWING No.	119123-L2