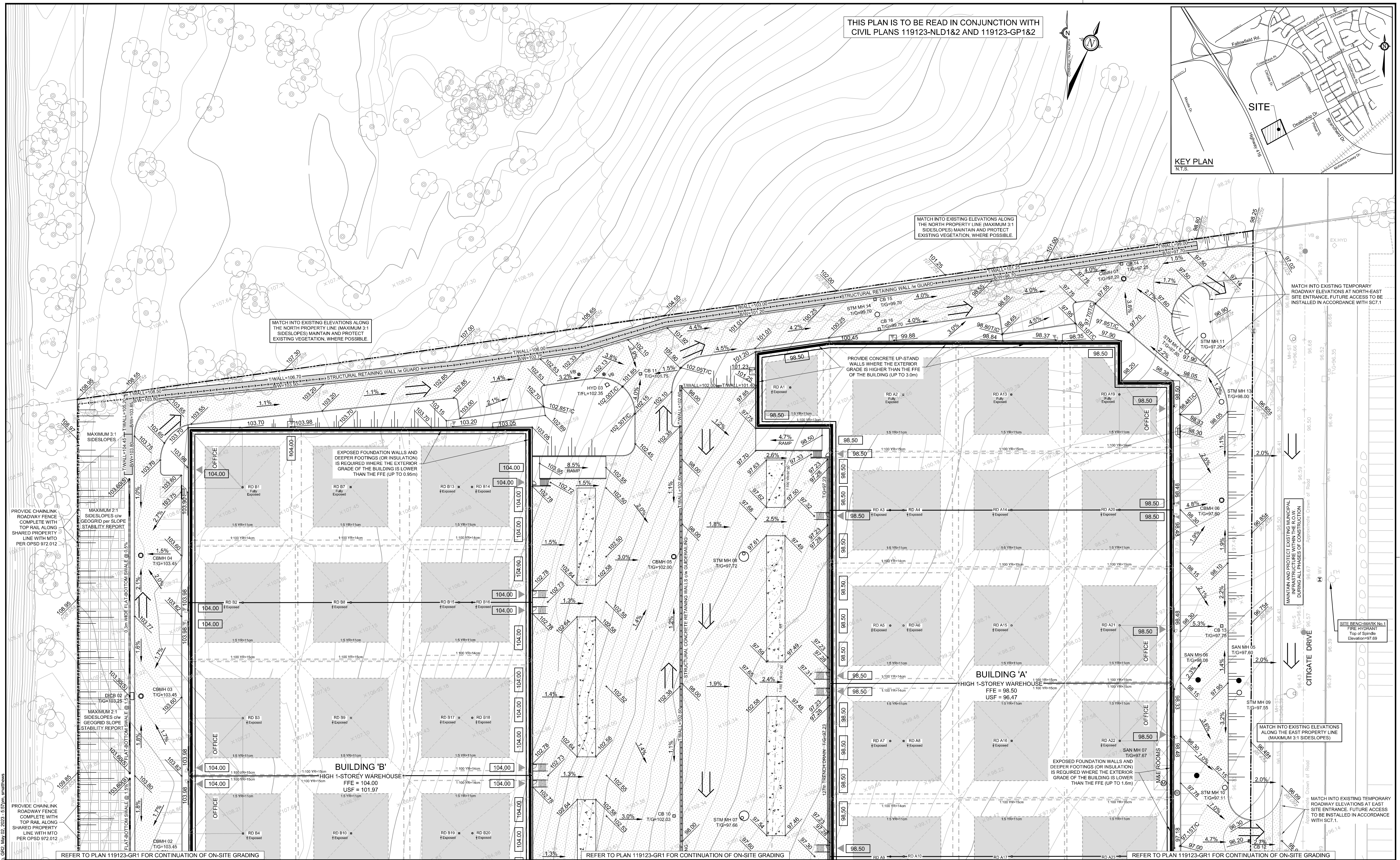
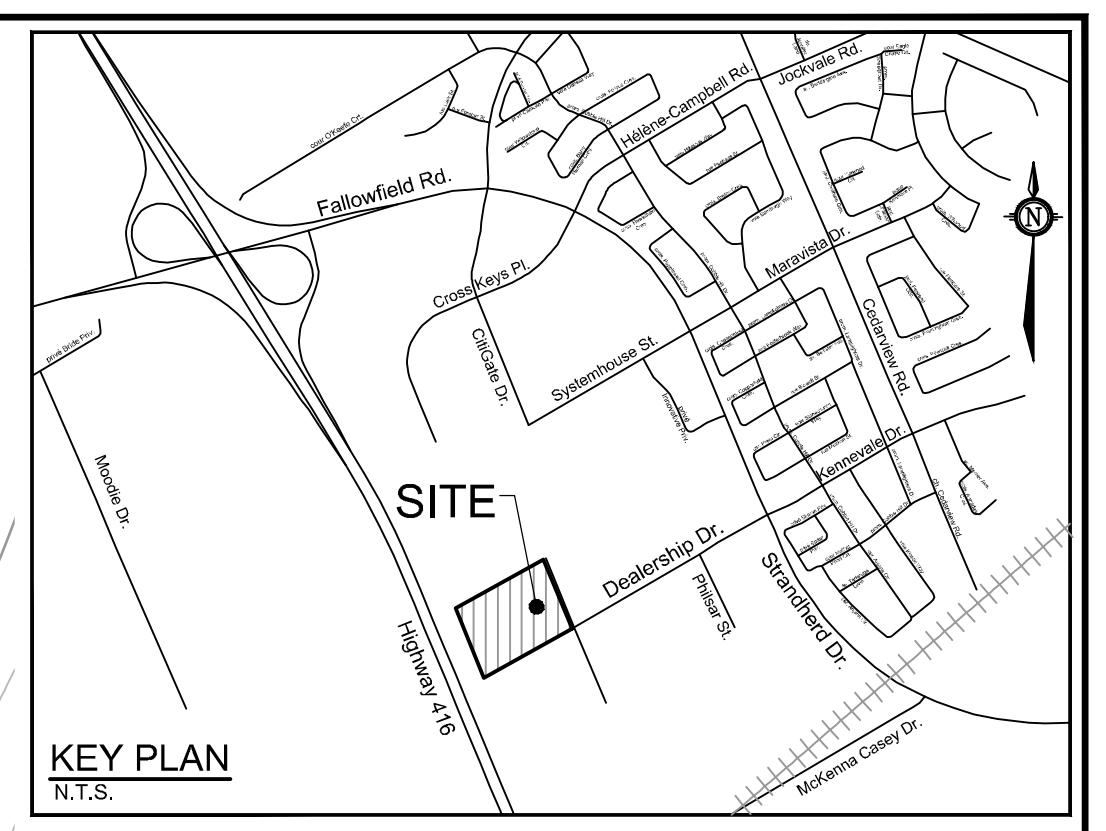
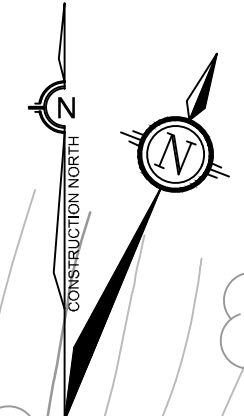


THIS PLAN IS TO BE READ IN CONJUNCTION WITH CIVIL PLANS 119123-NLD1&2 AND 119123-GP1&2



NOTE:
THE POSITION OF ALL POLE LINES, CONDUITS, WATERMANS, SEWERS AND OTHER UNDERGROUND AND OVERGROUND UTILITIES AND STRUCTURES IS NOT NECESSARILY SHOWN ON THE CONTRACT DRAWINGS, AND WHERE SHOWN, THE ACCURACY OF THE POSITION OF SUCH UTILITIES AND STRUCTURES IS NOT GUARANTEED. BEFORE STARTING WORK, DETERMINE THE EXACT LOCATION OF ALL SUCH UTILITIES AND STRUCTURES AND ASSUME ALL LIABILITY FOR DAMAGE TO THEM.

No.	REVISION	DATE	BY
1	ISSUED FOR CITY OF OTTAWA REVIEW	MAY 3/23	DDB

SCALE: 1:400

FOR REVIEW ONLY

DESIGN: SM / BM / DDB
CHECKED: DDB
DRAWN: SM
CHECKED: BM / DDB
APPROVED: DDB

NOVATECH
Engineers, Planners & Landscape Architects
Suite 200, 240 Michael Cowland Drive
Ottawa, Ontario, Canada K2M 1P6
Telephone: (613) 254-6643
Facsimile: (613) 254-5867
Website: www.novatech-eng.com

LOCATION:
CITY OF OTTAWA
575 DEALERSHIP DRIVE - PROPOSED WAREHOUSES

DRAWING NAME: GRADING PLAN

PROJECT NO.: 119123

REV: #1

DRAWING NO.: 119123-GR2