

**ROADWAY TRAFFIC NOISE
ASSESSMENT**

360 Laurier Avenue West
Ottawa, Ontario

REPORT: 23-097-Traffic Noise



May 3, 2023

PREPARED FOR

CLV Group Developments Inc.
209 Oak Park Boulevard, Suite 501,
Oakville, ON
L6H 0M2

PREPARED BY

Michael Lafortune, C.E.T., Environmental Scientist
Joshua Foster, P.Eng., Lead Engineer

EXECUTIVE SUMMARY

This report describes a roadway traffic noise assessment undertaken in support of site plan application for a proposed development located at 360 Laurier Avenue West in Ottawa, Ontario. The proposed development comprises a newly renovated 12-storey building, plus mechanical penthouse, containing five levels of below-grade parking. The site is surrounded by medium-rise office and residential buildings in all directions. The major sources of roadway traffic noise are Kent Street and Laurier Avenue, which are arterial roadways. Figure 1 illustrates a complete site plan with surrounding context.

The assessment is based on (i) theoretical noise prediction methods that conform to the Ministry of the Environment, Conservation and Parks (MECP) and City of Ottawa requirements; (ii) noise level criteria as specified by the City of Ottawa's Environmental Noise Control Guidelines (ENCG); (iii) future vehicular traffic volumes based on the City of Ottawa's Official Plan roadway classifications; and (iv) architectural drawings prepared by Linebox Studio.

The results of the current analysis indicate that noise levels will range between 54 and 67 dBA during the daytime period (07:00-23:00) and between 59 and 60 dBA during the nighttime period (23:00-07:00). The highest noise level (67 dBA) occurs at the north façade, which is nearest and most exposed to Laurier Avenue West. Noise levels at the rooftop terrace fall below the OLA criteria, therefore OLA mitigation will not be required. Building components with a higher Sound Transmission Class (STC) rating will be required where exterior noise levels exceed 65 dBA, as indicated in Figure 3.

Results of the calculations also indicate that the development will require central air conditioning, which will allow occupants to keep windows closed and maintain a comfortable living environment. A Type D Warning Clause will also be required be placed on all Lease, Purchase and Sale Agreements, as summarized in Section 6.

Stationary Noise impacts from the development on the surroundings can be minimized by judicious placement mechanical equipment such as its placement on a roof or in a mechanical penthouse, or the incorporation of silencers and noise screens as necessary. It is recommended that any large pieces of HVAC equipment be placed in the middle of the roof. A stationary noise assessment will be conducted during detailed design to determine noise control measures as necessary.



TABLE OF CONTENTS

1. INTRODUCTION 1

2. TERMS OF REFERENCE 1

3. OBJECTIVES 2

4. METHODOLOGY..... 2

4.1 Background.....2

4.2 Roadway Traffic Noise.....2

4.2.1 Criteria for Roadway Traffic Noise2

4.2.2 Theoretical Roadway Noise Predictions4

4.2.3 Roadway Traffic Volumes.....4

4.3 Indoor Noise Calculations5

5. RESULTS AND DISCUSSION 6

5.1 Roadway Traffic Noise Levels.....6

5.2 Noise Control Measures6

6. CONCLUSIONS AND RECOMMENDATIONS 8

FIGURES

APPENDICES

Appendix A – STAMSON 5.04 Input and Output Data and Supporting Information



1. INTRODUCTION

Gradient Wind Engineering Inc. (Gradient Wind) was retained by CLV Group Developments Inc. to undertake a roadway traffic noise assessment in support of site plan application for a proposed development located at 360 Laurier Avenue West in Ottawa, Ontario. This report summarizes the methodology, results, and recommendations related to the assessment of exterior and interior noise levels generated by local roadway traffic.

Our work is based on theoretical noise calculation methods conforming to the City of Ottawa¹ and Ministry of the Environment, Conservation and Parks (MECP)² guidelines. Noise calculations were based on architectural drawings prepared by Linebox Studio, with future traffic volumes corresponding to the City of Ottawa's Official Plan (OP) roadway classifications.

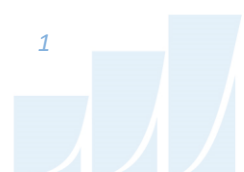
2. TERMS OF REFERENCE

The focus of this traffic noise assessment is a proposed development at 360 Laurier Avenue West in Ottawa, Ontario. The study site is located northeast of the Kent Street & Laurier Avenue intersection. The proposed development comprises a newly renovated 12-storey building, plus mechanical penthouse, containing five levels of below-grade parking, amenities and retail spaces at grade, as well as residential units from levels two to 11, with Juliet balconies along the north and south elevations from level three to 11. The 12th floor contains additional amenity spaces, as well as a green roof/landscaped area.

The site is surrounded by medium-rise office and residential buildings in all directions. The study buildings east façade is connected to the building at 340 Laurier Avenue and has no exposure to roadway traffic sources. The major sources of roadway traffic noise are Kent Street and Laurier Avenue, which are arterial roadways. Figure 1 illustrates a complete site plan with surrounding context.

¹ City of Ottawa Environmental Noise Control Guidelines, January 2016

² Ontario Ministry of the Environment and Climate Change – Environmental Noise Guidelines, Publication NPC-300, Queens Printer for Ontario, Toronto, 2013



3. OBJECTIVES

The principal objectives of this study are to (i) calculate the future noise levels on the study buildings produced by local roadway traffic, and (ii) ensure that interior and exterior noise levels do not exceed the allowable limits specified by the City of Ottawa’s Environmental Noise Control Guidelines as outlined in Section 4.2 of this report.

4. METHODOLOGY

4.1 Background

Noise can be defined as any obtrusive sound. It is created at a source, transmitted through a medium, such as air, and intercepted by a receiver. Noise may be characterized in terms of the power of the source or the sound pressure at a specific distance. While the power of a source is characteristic of that particular source, the sound pressure depends on the location of the receiver and the path that the noise takes to reach the receiver. Measurement of noise is based on the decibel unit, dBA, which is a logarithmic ratio referenced to a standard noise level (2×10^{-5} Pascals). The ‘A’ suffix refers to a weighting scale, which better represents how the noise is perceived by the human ear. With this scale, a doubling of power results in a 3 dBA increase in measured noise levels and is just perceptible to most people. An increase of 10 dBA is often perceived to be twice as loud.

4.2 Roadway Traffic Noise

4.2.1 Criteria for Roadway Traffic Noise

For surface roadway traffic noise, the equivalent sound energy level, L_{eq} , provides a measure of the time varying noise levels, which is well correlated with the annoyance of sound. It is defined as the continuous sound level, which has the same energy as a time varying noise level over a period of time. For roadways, the L_{eq} is commonly calculated on the basis of a 16-hour (L_{eq16}) daytime (07:00-23:00) / 8-hour (L_{eq8}) nighttime (23:00-07:00) split to assess its impact on residential buildings. The City of Ottawa’s Environmental Noise Control Guidelines (ENCG) specifies that the recommended indoor noise limit range (that is relevant to this study) is 45 and 40 dBA for living rooms and sleeping quarters respectively for roadway as listed in Table 1.



TABLE 1: INDOOR SOUND LEVEL CRITERIA (ROAD)³

Type of Space	Time Period	Leq (dBA)
General offices, reception areas, retail stores, etc.	07:00 – 23:00	50
Living/dining/den areas of residences , hospitals, schools, nursing/retirement homes, day-care centres, theatres, places of worship, libraries, individual or semi-private offices, conference rooms, etc.	07:00 – 23:00	45
Sleeping quarters of hotels/motels	23:00 – 07:00	45
Sleeping quarters of residences , hospitals, nursing/retirement homes, etc.	23:00 – 07:00	40

Predicted noise levels at the plane of window (POW) dictate the action required to achieve the recommended sound levels. An open window is considered to provide a 10 dBA reduction in noise, while a standard closed window is capable of providing a minimum 20 dBA noise reduction⁴. A closed window due to a ventilation requirement will bring noise levels down to achieve an acceptable indoor environment⁵. Therefore, where noise levels exceed 55 dBA daytime and 50 dBA nighttime, the ventilation for the building should consider the need for having windows and doors closed, which triggers the need for forced air heating with provision for central air conditioning. Where noise levels exceed 65 dBA daytime and 60 dBA nighttime, air conditioning will be required and building components will require higher levels of sound attenuation⁶.

The sound level criterion for outdoor living areas is 55 dBA, which applies during the daytime (07:00 to 23:00). When noise levels exceed 55 dBA, mitigation must be provided to reduce noise levels where technically and administratively feasible to acceptable levels at or below the criterion.

³ Adapted from ENCG 2016 – Tables 2.2b and 2.2c

⁴ Burberry, P.B. (2014). Mitchell’s Environment and Services. Routledge, Page 125

⁵ MECP, Environmental Noise Guidelines, NPC 300 – Part C, Section 7.8

⁶ MECP, Environmental Noise Guidelines, NPC 300 – Part C, Section 7.1.3

4.2.2 Theoretical Roadway Noise Predictions

Noise predictions were performed with the aid of the MECP computerized noise assessment program, STAMSON 5.04, for road analysis. Appendix A includes the STAMSON 5.04 input and output data.

Roadway traffic noise calculations were performed by treating each roadway segment as separate line sources of noise. In addition to the traffic volumes summarized in Table 2, theoretical noise predictions were based on the following parameters:

- Truck traffic on all roadways was taken to comprise 5% heavy trucks and 7% medium trucks, as per ENCG requirements for noise level predictions.
- The day/night split for all streets was taken to be 92%/8%, respectively.
- Ground surfaces were taken to be reflective due to the presence of hard (paved) ground.
- Topography was assumed to be a flat/gentle slope surrounding the study building.
- Noise receptors were strategically placed at three locations around the study area (see Figure 2).
- Receptor distances and exposure angles are illustrated in Figure 4.

4.2.3 Roadway Traffic Volumes

The ENCG dictates that noise calculations should consider future sound levels based on a roadway’s classification at the mature state of development. Therefore, traffic volumes are based on the roadway classifications outlined in the City of Ottawa’s Official Plan (OP) and Transportation Master Plan⁷ which provide additional details on future roadway expansions. Average Annual Daily Traffic (AADT) volumes are then based on data in Table B1 of the ENCG for each roadway classification. Table 2 (below) summarizes the AADT values used for each roadway included in this assessment.

TABLE 2: ROADWAY TRAFFIC DATA

Segment	Roadway Traffic Data	Speed Limit (km/h)	Traffic Volumes
Kent Street	2-Lane Arterial	40	15,000
Laurier Avenue	2-Lane Arterial	40	15,000

⁷ City of Ottawa Transportation Master Plan, November 2013

4.3 Indoor Noise Calculations

The difference between outdoor and indoor noise levels is the noise attenuation provided by the building envelope. According to common industry practice, complete walls and individual wall elements are rated according to the Sound Transmission Class (STC). The STC ratings of common residential walls built in conformance with the Ontario Building Code (2012) typically exceed STC 35, depending on exterior cladding, thickness and interior finish details. For example, brick veneer walls can achieve STC 50 or more. Standard commercially sided exterior metal stud walls have around STC 45. Standard good quality double-glazed non-operable windows can have STC ratings ranging from 25 to 40, depending on the window manufacturer, pane thickness and inter-pane spacing. As previously mentioned, the windows are the known weak point in a partition.

As per Section 4.2, when daytime noise levels (from road and rail sources) at the plane of the window exceed 65 dBA, calculations must be performed to evaluate the sound transmission quality of the building components to ensure acceptable indoor noise levels. The calculation procedure⁸ considers:

- Window type and total area as a percentage of total room floor area
- Exterior wall type and total area as a percentage of the total room floor area
- Acoustic absorption characteristics of the room
- Outdoor noise source type and approach geometry
- Indoor sound level criteria, which varies according to the intended use of a space

Based on published research⁹, exterior walls possess specific sound attenuation characteristics that are used as a basis for calculating the required STC ratings of windows in the same partition. Due to the limited information available at the time of the study, which was prepared for site plan approval, detailed floor layouts and building elevations have not been finalized; therefore, detailed STC calculations could not be performed at this time. As a guideline, the anticipated STC requirements for windows have been estimated based on the overall noise reduction required for each intended use of space (STC = outdoor noise level – targeted indoor noise levels).

⁸ Building Practice Note: Controlling Sound Transmission into Buildings by J.D. Quirt, National Research Council of Canada, September 1985

⁹ CMHC, Road & Rail Noise: Effects on Housing

5. RESULTS AND DISCUSSION

5.1 Roadway Traffic Noise Levels

The results of the roadway traffic noise calculations are summarized in Table 3 below. A complete set of input and output data from all STAMSON 5.04 calculations are available in Appendix A.

TABLE 3: EXTERIOR NOISE LEVELS DUE TO ROAD TRAFFIC

Receptor Number	Receptor Height Above Grade (m)	Receptor Location	STAMSON 5.04 Noise Level (dBA)	
			Day	Night
1	30	POW – North Façade	67	60
2	30	POW – West Façade	66	59
3	37.5	OLA – Rooftop Terrace	54	N/A

The results of the current analysis indicate that noise levels will range between 54 and 67 dBA during the daytime period (07:00-23:00) and between 59 and 60 dBA during the nighttime period (23:00-07:00). The highest noise level (67 dBA) occurs at the north façade, which is nearest and most exposed to Laurier Avenue West. Noise levels at the rooftop terrace fall below the OLA criteria, therefore OLA mitigation will not be required.

5.2 Noise Control Measures

The noise levels predicted due to roadway traffic exceed the criteria listed in Section 4.2 for building components. As discussed in Section 4.3, the anticipated STC requirements for windows have been estimated based on the overall noise reduction required for each intended use of space (STC = outdoor noise level – targeted indoor noise levels). As per city of Ottawa requirements, detailed STC calculations will be required to be completed prior to building permit application for each unit type. The STC requirements for the windows are summarized below for various units within the development (see Figure 3):

- **Bedroom Windows**
 - (i) Bedroom windows facing north or west will require a minimum STC of 30
 - (ii) All other bedroom windows are to satisfy Ontario Building Code (OBC 2020) requirements

- **Living Room Windows**
 - (i) Living room windows facing north or west will require a minimum STC of 25
 - (ii) All other living room windows are to satisfy Ontario Building Code (OBC 2020) requirements

- **Exterior Walls**
 - (i) Exterior wall components on the north and west façades will require a minimum STC of 45, which will be achieved with brick cladding or an acoustical equivalent according to NRC test data¹⁰

The STC requirements apply to windows, doors, spandrel panels and curtainwall elements. Exterior wall components on these façades are recommended to have a minimum STC of 45, where a window/wall system is used. A review of window supplier literature indicates that the specified STC ratings can be achieved by a variety of window systems having a combination of glass thickness and inter-pane spacing. We have specified an example window configuration, however several manufacturers and various combinations of window components, such as those proposed, will offer the necessary sound attenuation rating. It is the responsibility of the manufacturer to ensure that the specified window achieves the required STC. This can only be assured by using window configurations that have been certified by laboratory testing. The requirements for STC ratings assume that the remaining components of the building are constructed and installed according to the minimum standards of the Ontario Building Code. The specified STC requirements also apply to swinging and/or sliding patio doors.

Results of the calculations also indicate that the development will require central air conditioning, which will allow occupants to keep windows closed and maintain a comfortable living environment. In addition to ventilation requirements, Warning Clauses will also be required in all Lease, Purchase and Sale Agreements, as summarized in Section 6.

¹⁰ J.S. Bradley and J.A. Birta. Laboratory Measurements of the Sound Insulation of Building Façade Elements, National Research Council October 2000.

6. CONCLUSIONS AND RECOMMENDATIONS

The results of the current analysis indicate that noise levels will range between 54 and 67 dBA during the daytime period (07:00-23:00) and between 59 and 60 dBA during the nighttime period (23:00-07:00). The highest noise level (67 dBA) occurs at the north façade, which is nearest and most exposed to Laurier Avenue West. Noise levels at the rooftop terrace fall below the OLA criteria, therefore OLA mitigation will not be required. Building components with a higher Sound Transmission Class (STC) rating will be required where exterior noise levels exceed 65 dBA, as indicated in Figure 3.

Results of the calculations also indicate that the development will require central air conditioning, which will allow occupants to keep windows closed and maintain a comfortable living environment. The following Type D Warning Clause¹¹ will also be required be placed on all Lease, Purchase and Sale Agreements, as summarized below:

“This dwelling unit has been supplied with a central air conditioning system which will allow windows and exterior doors to remain closed, thereby ensuring that the indoor sound levels are within the sound level limits of the Municipality and the Ministry of the Environment.”

Stationary Noise impacts from the development on the surroundings can be minimized by judicious placement mechanical equipment such as its placement on a roof or in a mechanical penthouse, or the incorporation of silencers and noise screens as necessary. It is recommended that any large pieces of HVAC equipment be placed in the middle of the roof. A stationary noise assessment will be conducted during detailed design to determine noise control measures as necessary.

¹¹ City of Ottawa Environmental Noise Control Guidelines, January 2016

This concludes our traffic noise assessment and report. If you have any questions or wish to discuss our findings, please advise us. In the interim, we thank you for the opportunity to be of service.

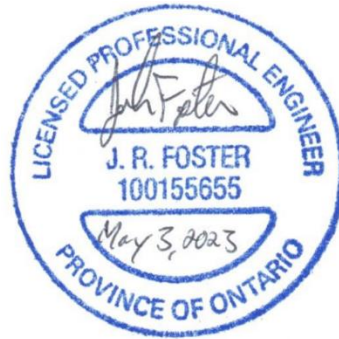
Sincerely,

Gradient Wind Engineering Inc.

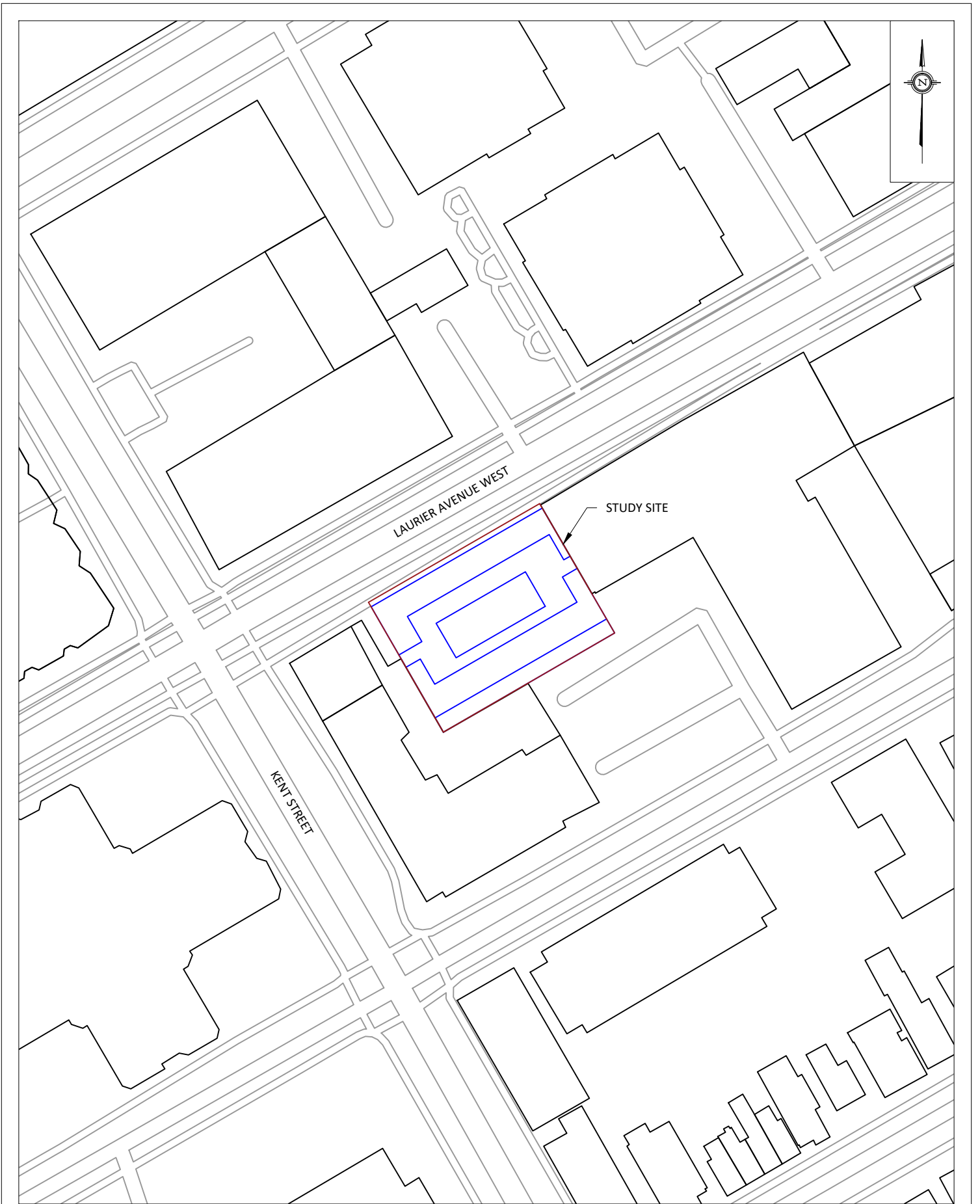


Michael Lafortune, C.E.T.
Environmental Scientist

Gradient Wind File #23-097-Traffic Noise

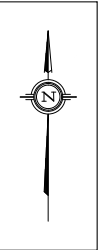


Joshua Foster, P.Eng.
Lead Engineer

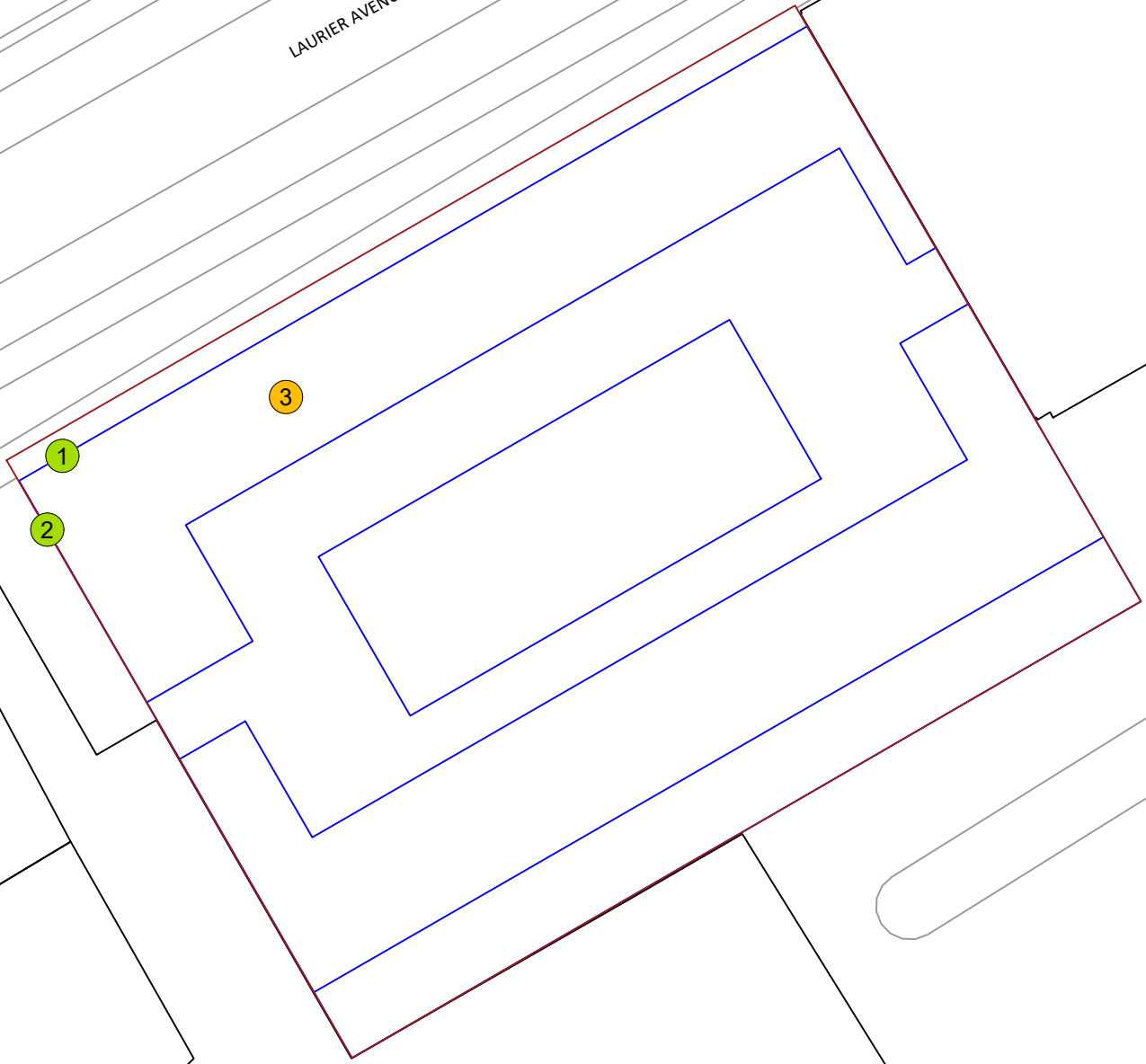


PROJECT	360 LAURIER AVENUE WEST, OTTAWA ROADWAY TRAFFIC NOISE ASSESSMENT	
SCALE	1:1000 (APPROX.)	DRAWING NO. GW23-097-1
DATE	APRIL 19, 2023	DRAWN BY M.L.

DESCRIPTION	FIGURE 1: SITE PLAN AND SURROUNDING CONTEXT
-------------	--

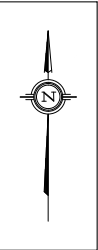


LAURIER AVENUE WEST

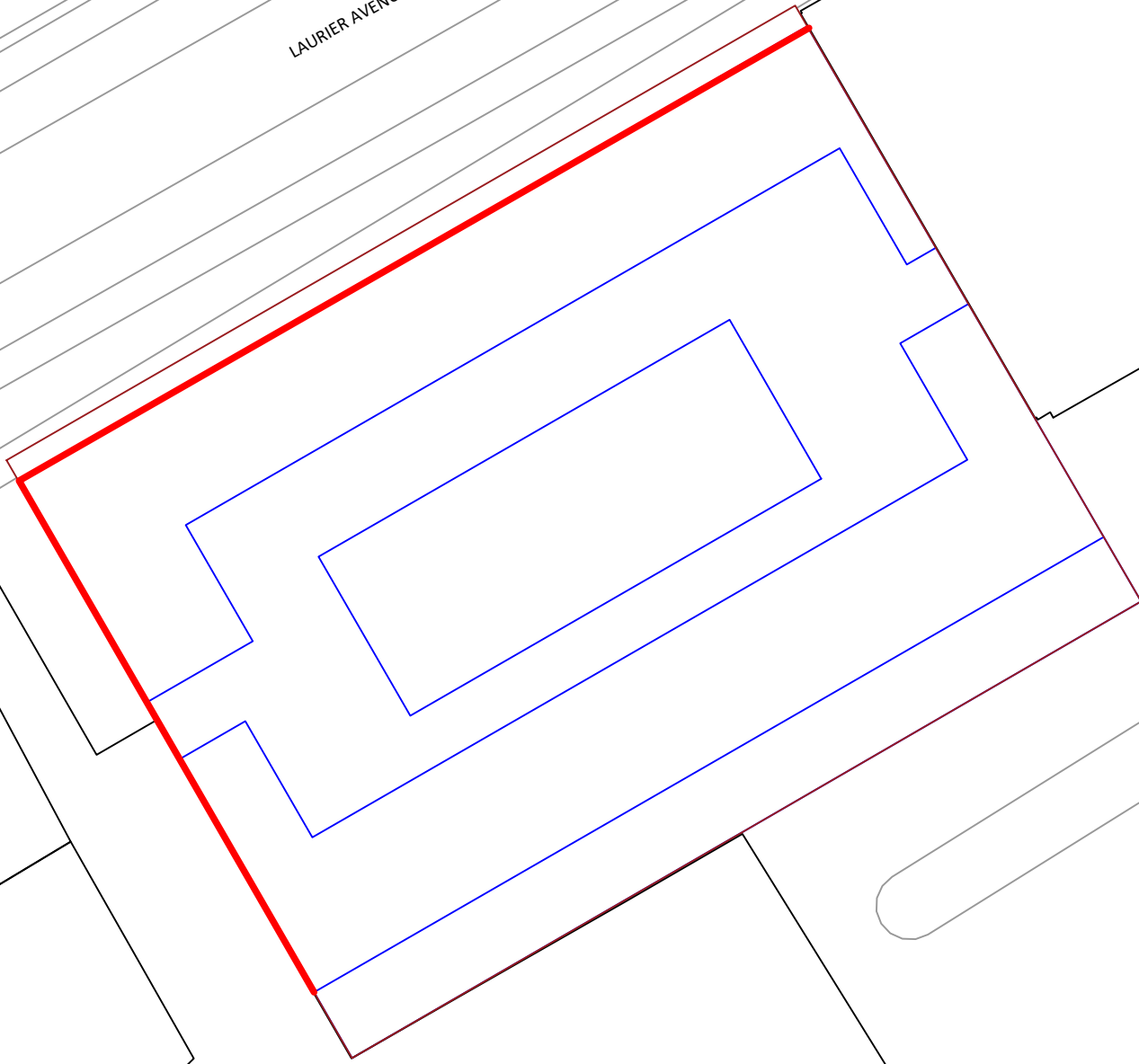



- 1 OLA RECEPTOR
- 1 POW RECEPTOR

PROJECT	360 LAURIER AVENUE WEST, OTTAWA ROADWAY TRAFFIC NOISE ASSESSMENT	
SCALE	1:300 (APPROX.)	DRAWING NO. GW23-097-2
DATE	APRIL 19, 2023	DRAWN BY M.L.

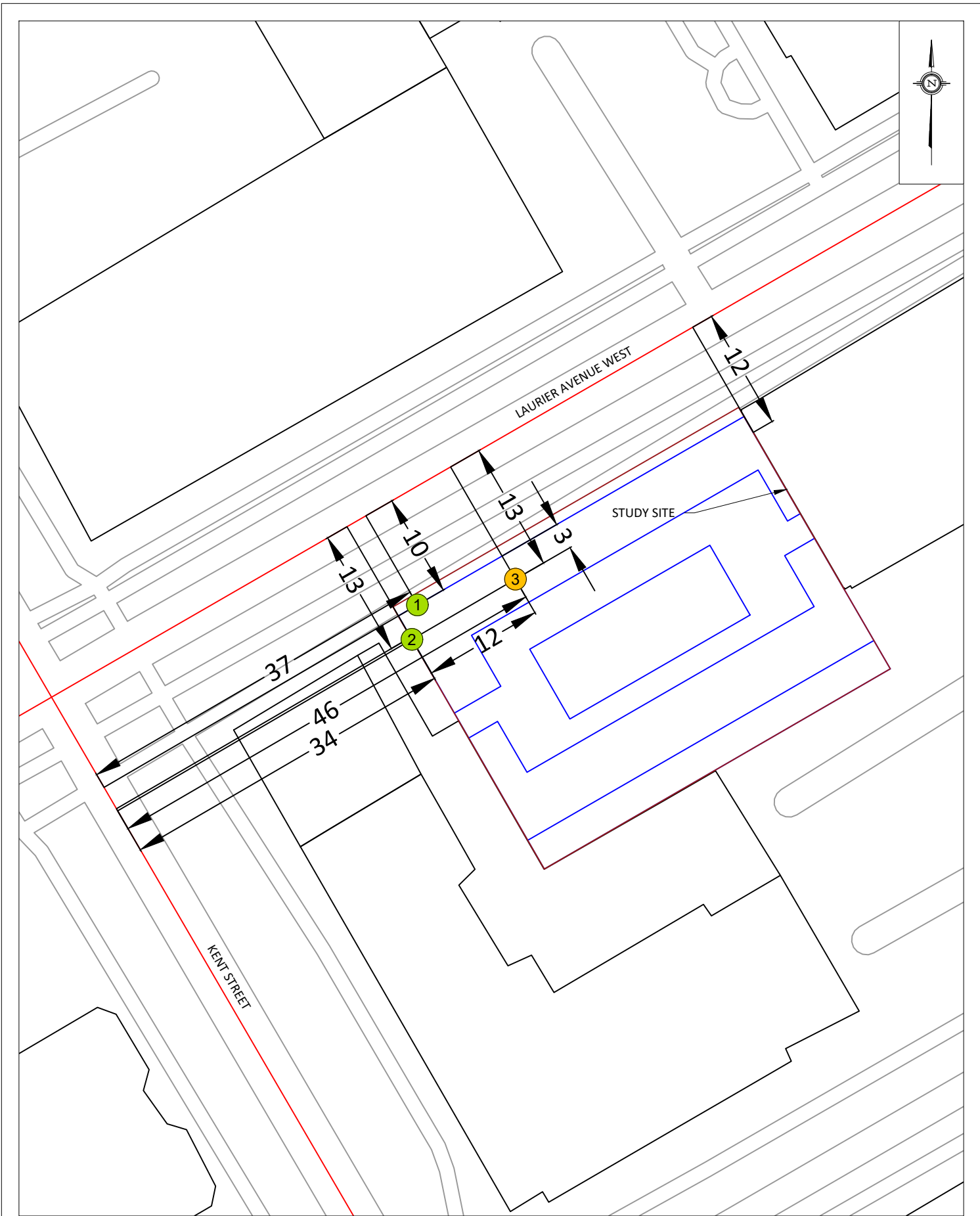


LAURIER AVENUE WEST



 BEDROOM/LIVING ROOM WINDOWS: STC 30/25

PROJECT	360 LAURIER AVENUE WEST, OTTAWA ROADWAY TRAFFIC NOISE ASSESSMENT	
SCALE	1:300 (APPROX.)	DRAWING NO. GW23-097-3
DATE	APRIL 19, 2023	DRAWN BY M.L.



PROJECT	360 LAURIER AVENUE WEST, OTTAWA ROADWAY TRAFFIC NOISE ASSESSMENT	
SCALE	1:500 (APPROX.)	DRAWING NO. GW23-097-4
DATE	APRIL 19, 2023	DRAWN BY M.L.

DESCRIPTION	FIGURE 4: STAMSON INPUT PARAMETERS
-------------	---------------------------------------

GRADIENTWIND

ENGINEERS & SCIENTISTS



APPENDIX A

STAMSON 5.04 – INPUT AND OUTPUT DATA

GRADIENTWIND

ENGINEERS & SCIENTISTS

STAMSON 5.0 NORMAL REPORT Date: 18-04-2023 15:31:02
MINISTRY OF ENVIRONMENT AND ENERGY / NOISE ASSESSMENT

Filename: r1.te Time Period: Day/Night 16/8 hours
Description:

Road data, segment # 1: Kent (day/night)

Car traffic volume : 12144/1056 veh/TimePeriod *
Medium truck volume : 966/84 veh/TimePeriod *
Heavy truck volume : 690/60 veh/TimePeriod *
Posted speed limit : 40 km/h
Road gradient : 0 %
Road pavement : 1 (Typical asphalt or concrete)

* Refers to calculated road volumes based on the following input:

24 hr Traffic Volume (AADT or SADT): 15000
Percentage of Annual Growth : 0.00
Number of Years of Growth : 0.00
Medium Truck % of Total Volume : 7.00
Heavy Truck % of Total Volume : 5.00
Day (16 hrs) % of Total Volume : 92.00

Data for Segment # 1: Kent (day/night)

Angle1 Angle2 : 0.00 deg 90.00 deg
Wood depth : 0 (No woods.)
No of house rows : 0 / 0
Surface : 2 (Reflective ground surface)
Receiver source distance : 37.00 / 37.00 m
Receiver height : 30.00 / 30.00 m
Topography : 1 (Flat/gentle slope; no barrier)
Reference angle : 0.00



GRADIENTWIND

ENGINEERS & SCIENTISTS

Road data, segment # 2: Laurier (day/night)

Car traffic volume : 12144/1056 veh/TimePeriod *
Medium truck volume : 966/84 veh/TimePeriod *
Heavy truck volume : 690/60 veh/TimePeriod *
Posted speed limit : 40 km/h
Road gradient : 0 %
Road pavement : 1 (Typical asphalt or concrete)

* Refers to calculated road volumes based on the following input:

24 hr Traffic Volume (AADT or SADT): 15000
Percentage of Annual Growth : 0.00
Number of Years of Growth : 0.00
Medium Truck % of Total Volume : 7.00
Heavy Truck % of Total Volume : 5.00
Day (16 hrs) % of Total Volume : 92.00

Data for Segment # 2: Laurier (day/night)

Angle1 Angle2 : -90.00 deg 90.00 deg
Wood depth : 0 (No woods.)
No of house rows : 0 / 0
Surface : 2 (Reflective ground surface)
Receiver source distance : 15.00 / 15.00 m
Receiver height : 30.00 / 30.00 m
Topography : 1 (Flat/gentle slope; no barrier)
Reference angle : 0.00



Results segment # 1: Kent (day)

Source height = 1.50 m

ROAD (0.00 + 59.75 + 0.00) = 59.75 dBA

Angle1	Angle2	Alpha	RefLeq	P.Adj	D.Adj	F.Adj	W.Adj	H.Adj	B.Adj
SubLeq									

--									
0	90	0.00	66.69	0.00	-3.92	-3.01	0.00	0.00	0.00
59.75									

Segment Leq : 59.75 dBA

Results segment # 2: Laurier (day)

Source height = 1.50 m

ROAD (0.00 + 66.69 + 0.00) = 66.69 dBA

Angle1	Angle2	Alpha	RefLeq	P.Adj	D.Adj	F.Adj	W.Adj	H.Adj	B.Adj
SubLeq									

--									
-90	90	0.00	66.69	0.00	0.00	0.00	0.00	0.00	0.00
66.69									

Segment Leq : 66.69 dBA

Total Leq All Segments: 67.49 dBA



Results segment # 1: Kent (night)

Source height = 1.50 m

ROAD (0.00 + 52.16 + 0.00) = 52.16 dBA

Angle1	Angle2	Alpha	RefLeq	P.Adj	D.Adj	F.Adj	W.Adj	H.Adj	B.Adj
SubLeq									

--									
0	90	0.00	59.09	0.00	-3.92	-3.01	0.00	0.00	0.00
52.16									

Segment Leq : 52.16 dBA

Results segment # 2: Laurier (night)

Source height = 1.50 m

ROAD (0.00 + 59.09 + 0.00) = 59.09 dBA

Angle1	Angle2	Alpha	RefLeq	P.Adj	D.Adj	F.Adj	W.Adj	H.Adj	B.Adj
SubLeq									

--									
-90	90	0.00	59.09	0.00	0.00	0.00	0.00	0.00	0.00
59.09									

Segment Leq : 59.09 dBA

Total Leq All Segments: 59.89 dBA

TOTAL Leq FROM ALL SOURCES (DAY) : 67.49
(NIGHT) : 59.89



GRADIENTWIND

ENGINEERS & SCIENTISTS

STAMSON 5.0 NORMAL REPORT Date: 18-04-2023 15:31:06
MINISTRY OF ENVIRONMENT AND ENERGY / NOISE ASSESSMENT

Filename: r2.te Time Period: Day/Night 16/8 hours
Description:

Road data, segment # 1: Kent (day/night)

Car traffic volume : 12144/1056 veh/TimePeriod *
Medium truck volume : 966/84 veh/TimePeriod *
Heavy truck volume : 690/60 veh/TimePeriod *
Posted speed limit : 40 km/h
Road gradient : 0 %
Road pavement : 1 (Typical asphalt or concrete)

* Refers to calculated road volumes based on the following input:

24 hr Traffic Volume (AADT or SADT): 15000
Percentage of Annual Growth : 0.00
Number of Years of Growth : 0.00
Medium Truck % of Total Volume : 7.00
Heavy Truck % of Total Volume : 5.00
Day (16 hrs) % of Total Volume : 92.00

Data for Segment # 1: Kent (day/night)

Angle1 Angle2 : -90.00 deg 90.00 deg
Wood depth : 0 (No woods.)
No of house rows : 0 / 0
Surface : 2 (Reflective ground surface)
Receiver source distance : 34.00 / 34.00 m
Receiver height : 30.00 / 30.00 m
Topography : 1 (Flat/gentle slope; no barrier)
Reference angle : 0.00



GRADIENTWIND

ENGINEERS & SCIENTISTS

Road data, segment # 2: Laurier (day/night)

Car traffic volume : 12144/1056 veh/TimePeriod *
Medium truck volume : 966/84 veh/TimePeriod *
Heavy truck volume : 690/60 veh/TimePeriod *
Posted speed limit : 40 km/h
Road gradient : 0 %
Road pavement : 1 (Typical asphalt or concrete)

* Refers to calculated road volumes based on the following input:

24 hr Traffic Volume (AADT or SADT): 15000
Percentage of Annual Growth : 0.00
Number of Years of Growth : 0.00
Medium Truck % of Total Volume : 7.00
Heavy Truck % of Total Volume : 5.00
Day (16 hrs) % of Total Volume : 92.00

Data for Segment # 2: Laurier (day/night)

Angle1 Angle2 : -90.00 deg 0.00 deg
Wood depth : 0 (No woods.)
No of house rows : 0 / 0
Surface : 2 (Reflective ground surface)
Receiver source distance : 15.00 / 15.00 m
Receiver height : 30.00 / 30.00 m
Topography : 1 (Flat/gentle slope; no barrier)
Reference angle : 0.00



GRADIENTWIND

ENGINEERS & SCIENTISTS

Results segment # 1: Kent (day)

Source height = 1.50 m

ROAD (0.00 + 63.13 + 0.00) = 63.13 dBA

Angle1	Angle2	Alpha	RefLeq	P.Adj	D.Adj	F.Adj	W.Adj	H.Adj	B.Adj
--------	--------	-------	--------	-------	-------	-------	-------	-------	-------

SubLeq

--									
-90	90	0.00	66.69	0.00	-3.55	0.00	0.00	0.00	0.00
63.13									

Segment Leq : 63.13 dBA

Results segment # 2: Laurier (day)

Source height = 1.50 m

ROAD (0.00 + 63.68 + 0.00) = 63.68 dBA

Angle1	Angle2	Alpha	RefLeq	P.Adj	D.Adj	F.Adj	W.Adj	H.Adj	B.Adj
--------	--------	-------	--------	-------	-------	-------	-------	-------	-------

SubLeq

--									
-90	0	0.00	66.69	0.00	0.00	-3.01	0.00	0.00	0.00
63.68									

Segment Leq : 63.68 dBA

Total Leq All Segments: 66.42 dBA



GRADIENTWIND

ENGINEERS & SCIENTISTS

Results segment # 1: Kent (night)

Source height = 1.50 m

ROAD (0.00 + 55.54 + 0.00) = 55.54 dBA

Angle1	Angle2	Alpha	RefLeq	P.Adj	D.Adj	F.Adj	W.Adj	H.Adj	B.Adj
--------	--------	-------	--------	-------	-------	-------	-------	-------	-------

SubLeq

--									
-90	90	0.00	59.09	0.00	-3.55	0.00	0.00	0.00	0.00
55.54									

Segment Leq : 55.54 dBA

Results segment # 2: Laurier (night)

Source height = 1.50 m

ROAD (0.00 + 56.08 + 0.00) = 56.08 dBA

Angle1	Angle2	Alpha	RefLeq	P.Adj	D.Adj	F.Adj	W.Adj	H.Adj	B.Adj
--------	--------	-------	--------	-------	-------	-------	-------	-------	-------

SubLeq

--									
-90	0	0.00	59.09	0.00	0.00	-3.01	0.00	0.00	0.00
56.08									

Segment Leq : 56.08 dBA

Total Leq All Segments: 58.83 dBA

TOTAL Leq FROM ALL SOURCES (DAY): 66.42
(NIGHT): 58.83



GRADIENTWIND

ENGINEERS & SCIENTISTS

STAMSON 5.0 NORMAL REPORT Date: 18-04-2023 15:31:12
MINISTRY OF ENVIRONMENT AND ENERGY / NOISE ASSESSMENT

Filename: r3.te Time Period: Day/Night 16/8 hours
Description:

Road data, segment # 1: Kent (day/night)

Car traffic volume : 12144/1056 veh/TimePeriod *
Medium truck volume : 966/84 veh/TimePeriod *
Heavy truck volume : 690/60 veh/TimePeriod *
Posted speed limit : 40 km/h
Road gradient : 0 %
Road pavement : 1 (Typical asphalt or concrete)

* Refers to calculated road volumes based on the following input:

24 hr Traffic Volume (AADT or SADT): 15000
Percentage of Annual Growth : 0.00
Number of Years of Growth : 0.00
Medium Truck % of Total Volume : 7.00
Heavy Truck % of Total Volume : 5.00
Day (16 hrs) % of Total Volume : 92.00

Data for Segment # 1: Kent (day/night)

Angle1 Angle2 : -90.00 deg 90.00 deg
Wood depth : 0 (No woods.)
No of house rows : 0 / 0
Surface : 2 (Reflective ground surface)
Receiver source distance : 46.00 / 46.00 m
Receiver height : 37.50 / 37.50 m
Topography : 2 (Flat/gentle slope; with barrier)
Barrier angle1 : -90.00 deg Angle2 : 90.00 deg
Barrier height : 36.00 m
Barrier receiver distance : 12.00 / 12.00 m
Source elevation : 0.00 m
Receiver elevation : 0.00 m
Barrier elevation : 0.00 m
Reference angle : 0.00



GRADIENTWIND

ENGINEERS & SCIENTISTS

Road data, segment # 2: Laurier (day/night)

Car traffic volume : 12144/1056 veh/TimePeriod *
Medium truck volume : 966/84 veh/TimePeriod *
Heavy truck volume : 690/60 veh/TimePeriod *
Posted speed limit : 40 km/h
Road gradient : 0 %
Road pavement : 1 (Typical asphalt or concrete)

* Refers to calculated road volumes based on the following input:

24 hr Traffic Volume (AADT or SADT): 15000
Percentage of Annual Growth : 0.00
Number of Years of Growth : 0.00
Medium Truck % of Total Volume : 7.00
Heavy Truck % of Total Volume : 5.00
Day (16 hrs) % of Total Volume : 92.00

Data for Segment # 2: Laurier (day/night)

Angle1 Angle2 : -90.00 deg 90.00 deg
Wood depth : 0 (No woods.)
No of house rows : 0 / 0
Surface : 2 (Reflective ground surface)
Receiver source distance : 15.00 / 15.00 m
Receiver height : 37.50 / 37.50 m
Topography : 2 (Flat/gentle slope; with barrier)
Barrier angle1 : -90.00 deg Angle2 : 90.00 deg
Barrier height : 36.00 m
Barrier receiver distance : 3.00 / 3.00 m
Source elevation : 0.00 m
Receiver elevation : 0.00 m
Barrier elevation : 0.00 m
Reference angle : 0.00



GRADIENTWIND

ENGINEERS & SCIENTISTS

Results segment # 1: Kent (day)

Source height = 1.50 m

Barrier height for grazing incidence

Source Height (m)	Receiver Height (m)	Barrier Height (m)	Elevation of Barrier Top (m)
1.50	37.50	28.11	28.11

ROAD (0.00 + 45.83 + 0.00) = 45.83 dBA

Angle1	Angle2	Alpha	RefLeq	P.Adj	D.Adj	F.Adj	W.Adj	H.Adj	B.Adj
-90	90	0.00	66.69	0.00	-4.87	0.00	0.00	0.00	-15.99

SubLeq

Segment Leq : 45.83 dBA

Results segment # 2: Laurier (day)

Source height = 1.50 m

Barrier height for grazing incidence

Source Height (m)	Receiver Height (m)	Barrier Height (m)	Elevation of Barrier Top (m)
1.50	37.50	30.30	30.30

ROAD (0.00 + 53.52 + 0.00) = 53.52 dBA

Angle1	Angle2	Alpha	RefLeq	P.Adj	D.Adj	F.Adj	W.Adj	H.Adj	B.Adj
-90	90	0.00	66.69	0.00	0.00	0.00	0.00	0.00	-13.17

SubLeq

Segment Leq : 53.52 dBA

Total Leq All Segments: 54.20 dBA



GRADIENTWIND

ENGINEERS & SCIENTISTS

Results segment # 1: Kent (night)

Source height = 1.50 m

Barrier height for grazing incidence

Source Height (m)	Receiver Height (m)	Barrier Height (m)	Elevation of Barrier Top (m)
1.50	37.50	28.11	28.11

ROAD (0.00 + 38.24 + 0.00) = 38.24 dBA

Angle1	Angle2	Alpha	RefLeq	P.Adj	D.Adj	F.Adj	W.Adj	H.Adj	B.Adj
-90	90	0.00	59.09	0.00	-4.87	0.00	0.00	0.00	-15.99

SubLeq
38.24

Segment Leq : 38.24 dBA

Results segment # 2: Laurier (night)

Source height = 1.50 m

Barrier height for grazing incidence

Source Height (m)	Receiver Height (m)	Barrier Height (m)	Elevation of Barrier Top (m)
1.50	37.50	30.30	30.30

ROAD (0.00 + 45.92 + 0.00) = 45.92 dBA

Angle1	Angle2	Alpha	RefLeq	P.Adj	D.Adj	F.Adj	W.Adj	H.Adj	B.Adj
-90	90	0.00	59.09	0.00	0.00	0.00	0.00	0.00	-13.17

SubLeq
45.92

Segment Leq : 45.92 dBA

Total Leq All Segments: 46.60 dBA

TOTAL Leq FROM ALL SOURCES (DAY): 54.20
(NIGHT): 46.60

