

KEY PLAN

LEGAL DESCRIPTION:
PART OF LOTS 28 AND 29
REGISTERED PLAN 2996
CITY OF OTTAWA
SURVEY REFERENCE:
TECHNICAL INFORMATION GATHERED FROM
SURVEY PREPARED BY CERTIFIED LAND
SURVEYOR: FARLEY, J.D. BARNES LIMITED
DATE: MARCH 10TH, 2023
FILE # 23-10-013-00
PLANNER CONTACT INFORMATION:
NAME: C.M. FOX
TEL: (613) 731-7244

SITE PLAN LEGEND

■ CB	CATCH BASIN
● SAN MH	SANITARY MAN HOLE
▲	BUILDING ENTRANCE
○ UP	UTILITY POLE
⊙ SIGN	TRAFFIC SIGN
⊙	FIRE HYDRANT
⊙ BR	SINGLE BIKE RACK BOLLARD
⊙ SB	COLLAPSABLE SAFETY BOLLARD 3'-0" - 5'-0" O.C.
⊙ SB PC	COLLAPSABLE SAFETY BOLLARD 3'-0" - 5'-0" O.C. MOUNTED ON PIN CURB
⊙	BICYCLE LANE
⊙ MIR	EXISTING CONVEX MIRRORS

VEHICLE PARKING PROVIDED (BY FLOOR)

TYPE	COUNT
LEVEL P5 BASEMENT	
COMPACT (2438x5300)	9
STANDARD (2400x5200)	6
LEVEL P4 BASEMENT	
COMPACT (2438x5300)	9
STANDARD (2400x5200)	5
LEVEL P3 BASEMENT	
ACCESSIBLE (3400x5200)	2
COMPACT (2438x5300)	7
STANDARD (2400x5200)	3
LEVEL P2 BASEMENT	
COMPACT (2438x5300)	6
MOTORCYCLE (1200x2500)	2
STANDARD (2400x5200)	3
LEVEL P1 BASEMENT	
ACCESSIBLE (3400x5200)	1
COMPACT (2438x5300)	5
STANDARD (2400x5200)	2
GRAND TOTAL	40

BICYCLE PARKING PROVIDED (BY FLOOR)

TYPE	COUNT
LEVEL P4 BASEMENT	
HORIZONTAL DBL STACKED BICYCLE SPACE (SECURE)	8
LEVEL P2 BASEMENT	
HORIZONTAL DBL STACKED BICYCLE SPACE (SECURE)	6
LEVEL 01	
HORIZONTAL DBL STACKED BICYCLE SPACE (SECURE)	54
VERTICAL BICYCLE SPACE (SECURE)	9
GRAND TOTAL	77
REQUIRED	70

BICYCLE PARKING (LOCKER @ PARKING STALL)

LEVEL	COUNT
LEVEL P5 BASEMENT	
	13
LEVEL P4 BASEMENT	
	12
LEVEL P3 BASEMENT	
	12
GRAND TOTAL	37
GRAND TOTAL WITH ABOVE REQ'D	114

1 SITE PLAN - PROPOSED
1:150
A0-200

GENERAL NOTES:
UNLESS OTHERWISE NOTED:

- SITE DEMOLITION PLAN AND SITE PLAN TO BE READ IN CONJUNCTION WITH LANDSCAPE AND CIVIL PACKAGE DRAWINGS.
- ALL CONSTRUCTED ELEMENTS ARE TO BE RETAINED.
- PROTECTION MEASURES ARE TO BE TAKEN TO PREVENT DAMAGE TO EXISTING STRUCTURES OR LANDSCAPE FROM OCCURRING.
- ANY PARKING SIGNAGE MOVED OR REMOVED DURING CONSTRUCTION WILL BE REINSTATED.
- SIDEWALK/CURB TO BE REINSTATED WHERE PRIVATE DRIVEWAYS HAVE BEEN DEMOLISHED OR WHERE DAMAGED THROUGH CONSTRUCTION PROCESS.

RESIDENTIAL SUITE COUNTS

TYPE	COUNT
1 BDRM	1
1 BDRM (B.F.)	19
1 BDRM (B.F.) + DEN	1
1 BDRM + DEN	19
2 BDRM	30
2 BDRM (B.F.)	10
2 BDRM + DEN	19
STUDIO	40
TOTAL	139

GFA AREA SCHEDULE

LEVEL	EXISTING AREA	PROPOSED AREA	DIFFERENCE
P5-BASEMENT (PARK./MECH.)	-	-	-
P4-BASEMENT (PARK./MECH.)	-	-	-
P3-BASEMENT (PARK./MECH.)	-	-	-
P2-BASEMENT (PARK./MECH.)	-	-	-
P1-BASEMENT (PARK./MECH.)	-	-	-
LEVEL 01 (RETAIL/AMENITY)	728.31 m ²	704.53 m ²	-23.78 m ²
LEVEL 02 (RESIDENTIAL)	831.90 m ²	807.53 m ²	-24.37 m ²
LEVEL 03 (RESIDENTIAL)	916.17 m ²	893.20 m ²	-22.97 m ²
LEVEL 04 (RESIDENTIAL)	916.17 m ²	893.20 m ²	-22.97 m ²
LEVEL 05 (RESIDENTIAL)	916.17 m ²	893.20 m ²	-22.97 m ²
LEVEL 06 (RESIDENTIAL)	916.17 m ²	893.20 m ²	-22.97 m ²
LEVEL 07 (RESIDENTIAL)	916.17 m ²	893.20 m ²	-22.97 m ²
LEVEL 08 (RESIDENTIAL)	916.17 m ²	893.20 m ²	-22.97 m ²
LEVEL 09 (RESIDENTIAL)	916.17 m ²	893.20 m ²	-22.97 m ²
LEVEL 10 (RESIDENTIAL)	916.17 m ²	893.20 m ²	-22.97 m ²
LEVEL 11 (RESIDENTIAL)	916.17 m ²	893.20 m ²	-22.97 m ²
LEVEL 12 (FFL (AMENITIES))	293.40 m ²	330.16 m ²	36.76 m ²
LEVEL 13 (MECH.)	-	-	-
TOTAL	10,099.12 m²	9,881.05 m²	-218.07 m²

RESIDENTIAL SUITE AREAS

LEVEL	TYPE	AREA (SQ.M)	AREA (SF)
LEVEL 02			
SUITE 01	1 BDRM (B.F.) + DEN	54.72 m ²	588.96 ft ²
SUITE 03	2 BDRM	65.54 m ²	705.50 ft ²
SUITE 04	2 BDRM (B.F.)	62.54 m ²	673.13 ft ²
SUITE 05	STUDIO	45.26 m ²	487.16 ft ²
SUITE 06	STUDIO	38.93 m ²	419.04 ft ²
SUITE 07	1 BDRM	47.52 m ²	511.49 ft ²
SUITE 08	1 BDRM + DEN	59.15 m ²	636.69 ft ²
SUITE 09	STUDIO	38.95 m ²	419.30 ft ²
SUITE 10	STUDIO	45.05 m ²	484.91 ft ²
SUITE 11	2 BDRM	62.71 m ²	675.05 ft ²
SUITE 12	2 BDRM	70.20 m ²	755.58 ft ²
SUITE 13	2 BDRM + DEN	72.25 m ²	777.67 ft ²
SUITE 14	1 BDRM (B.F.)	52.31 m ²	563.11 ft ²
LEVEL 03 TO LEVEL 11 (TYPICAL)			
SUITE 01	1 BDRM (B.F.)	52.55 m ²	565.64 ft ²
SUITE 02	2 BDRM + DEN	72.20 m ²	777.17 ft ²
SUITE 03	2 BDRM	70.51 m ²	759.00 ft ²
SUITE 04	2 BDRM (B.F.)	62.54 m ²	673.13 ft ²
SUITE 05	STUDIO	45.26 m ²	487.16 ft ²
SUITE 06	STUDIO	38.93 m ²	419.04 ft ²
SUITE 07	1 BDRM + DEN	56.87 m ²	612.12 ft ²
SUITE 08	1 BDRM + DEN	56.62 m ²	609.44 ft ²
SUITE 09	STUDIO	38.97 m ²	419.42 ft ²
SUITE 10	STUDIO	44.26 m ²	476.41 ft ²
SUITE 11	2 BDRM	63.92 m ²	688.08 ft ²
SUITE 12	2 BDRM	70.48 m ²	758.65 ft ²
SUITE 13	2 BDRM + DEN	72.55 m ²	780.87 ft ²
SUITE 14	1 BDRM (B.F.)	52.59 m ²	566.07 ft ²
TOTAL		8,232.44 m²	88,613.24 ft²

ZONING MATRIX

ITEM	FIELD	DATA	ITEM	FIELD	DATA
1	LEGAL DESCRIPTION	LOTS 28 AND 29 REGISTERED PLAN 2996	9	LOADING ZONE	REQUIRED: PROPOSED: RESIDENTIAL: 0 spaces (min) 1 SHARED LOADING ZONE PROPOSED:
2	CURRENT ZONING PERMITTED USES:	MD S25 APARTMENT DWELLINGS (HIGH RISE), RESTAURANT (CONDITIONAL), OFFICE (CURRENT EXCEPTION)	10	PARKING	REQUIRED: RESIDENTIAL: 1.5 PER UNIT = 209 spots VISITOR: 0.1 PER SUITE AFTER FIRST 12 UNITS = 13 spots TOTAL: 13 PROPOSED: TOTAL: 60
3	LOT AREA	1,233.35 m ² (EXISTING UNCHANGED)	11	BICYCLE PARKING	REQUIRED: RESIDENTIAL: 0.5 / UNIT = 70 SPACES TOTAL: 70 SPACES + 1 RETAIL SPACES (REFER TO SITE PLAN) PROPOSED: TOTAL: 77
4	LOT FRONTAGE	40.32 m (EXISTING UNCHANGED)	12	LANDSCAPED AREAS	REQUIRED: NONE NOTED FOR THIS SITE
5	BUILDING AREA	1,057.83 m ² (EXISTING UNCHANGED)	13	DRIVE AISLES	REQUIRED: SINGLE TRAFFIC LANE: 3m DOUBLE TRAFFIC LANE: MINIMUM: 6m; MAXIMUM: 3.6m FOR LESS THAN 20 PARKING SPACES, 6.7m FOR 20 OF MORE PARKING SPACES PROPOSED: SEE PLANS
6	BUILDING SETBACKS	FRONT YARD REQUIRED: NO MINIMUM FRONT YARD (EXISTING): 1.02m REAR YARD (REQUIRED): NO MINIMUM REAR YARD (EXISTING): 0m INTERIOR SIDE YARD (REQUIRED): NO MINIMUM INTERIOR SIDE YARD (EXISTING): 0m			
7	AMENITY SPACE	REQUIRED: 6m ² x 139 DWELLING UNITS = 834 m ² PROPOSED COMMUNAL AMENITY: GROUND LEVEL INTERIOR: 228.4 m ² L12 INTERIOR: 326 m ² L12 EXTERIOR: 426.5 m ² TOTAL: 960.9 m ²			
8	BUILDING HEIGHT	HEIGHTS: PROPOSED CHANGE TO USE AS FOLLOWS: 36.39 m TO TOP OF MAIN ROOF AMENITY 40.26 m TO TOP OF AMENITY PENTHOUSE (L12) 44.75 m TO TOP OF MECHANICAL PENTHOUSE / EMR (L13)			

2 REV. FOR SPC COMMENTS	230721
1 ISSUED FOR SITE PLAN CONTROL	230504
no revisions	date
stamp timbre	



general notes | note générale

- CONTRACTOR SHALL CHECK AND VERIFY ALL DIMENSIONS AND REPORT ALL ERRORS AND OMISSIONS TO THE ARCHITECT.
- DO NOT SCALE THE DRAWINGS.
- NOT FOR CONSTRUCTION UNLESS SIGNED BY THE ARCHITECT.

360 LAURIER AVE W
PROPOSED MIXED-USE RENOVATION

360 LAURIER AVE W | OTTAWA | ON | K1P 1C8
drawing title | titre du dessin

SITE PLAN

project number | numéro du projet **2225**
drawn | dessiné **JH**
checked | vérifié **JAP / MAR / AR**
date | date **12/08/22**
scale | échelle **As indicated**

drawing number | numéro du dessin
A0-801

D07-12-23-0055

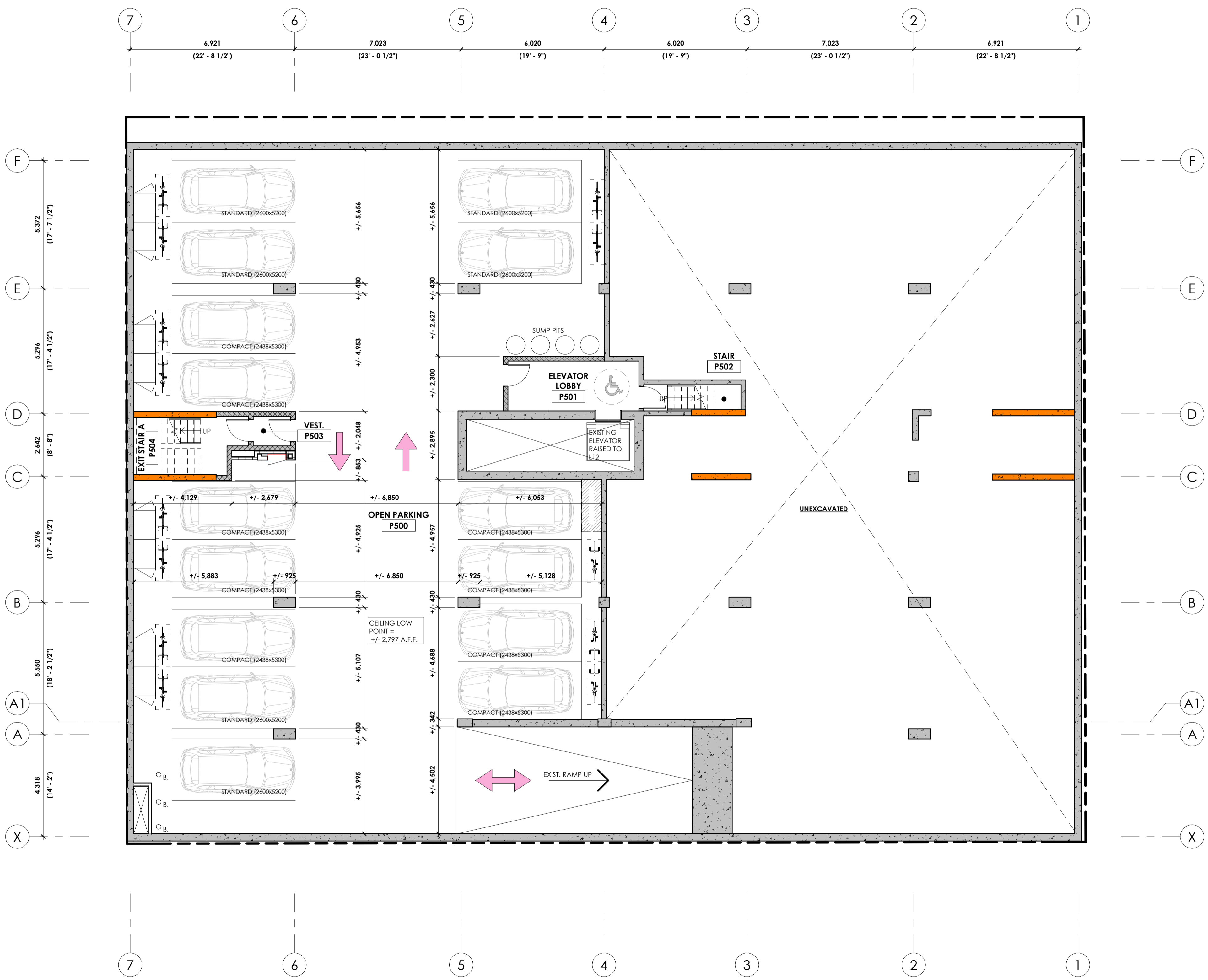
#XXXXX

VEHICLE PARKING PROVIDED (BY FLOOR)	
TYPE	COUNT
LEVEL P5 BASEMENT	
COMPACT (2438x5300)	9
STANDARD (2600x5200)	6
LEVEL P4 BASEMENT	
COMPACT (2438x5300)	9
STANDARD (2600x5200)	5
LEVEL P3 BASEMENT	
ACCESSIBLE (3400x5200)	2
COMPACT (2438x5300)	7
STANDARD (2600x5200)	3
LEVEL P2 BASEMENT	
COMPACT (2438x5300)	6
MOTORCYCLE (1200x2500)	2
STANDARD (2600x5200)	3
LEVEL P1 BASEMENT	
ACCESSIBLE (3400x5200)	1
COMPACT (2438x5300)	5
STANDARD (2600x5200)	2
GRAND TOTAL	60

BICYCLE PARKING PROVIDED (BY FLOOR)	
TYPE	COUNT
LEVEL P4 BASEMENT	
HORIZONTAL DBL STACKED BICYCLE SPACE (SECURE)	8
LEVEL P2 BASEMENT	
HORIZONTAL DBL STACKED BICYCLE SPACE (SECURE)	6
LEVEL 01	
HORIZONTAL DBL STACKED BICYCLE SPACE (SECURE)	54
VERTICAL BICYCLE SPACE (SECURE)	9
GRAND TOTAL	77
REQUIRED	70

BICYCLE PARKING (LOCKER @ PARKING STALL)	
LEVEL	COUNT
LEVEL P5 BASEMENT	13
LEVEL P4 BASEMENT	12
LEVEL P3 BASEMENT	12
GRAND TOTAL	37
GRAND TOTAL WITH ABOVE REQ'D	114

RESIDENTIAL LOCKERS SCHEDULE (BY TYPE)	
TYPE	COUNT
RESIDENTIAL STORAGE LOCKER	
GROUND FLOOR - 36"Wx48"Dx80"H	18
PARKING - 36"Wx48"Dx80"	24
TYPICAL FLOORS - 36"Wx48"Dx80"	98
GRAND TOTAL	140



EXISTING TO REMAIN
 NEW (PROPOSED)

CLV GROUP DEVELOPMENTS
485 BANK STREET, SUITE 200, OTTAWA K2P 1Z2
client | client

CLELAND JARDINE
ENGINEERING LTD.
structural engineers | ingénieur structure

Smith + Andersen
MEP engineers | ingénieur MEP

LRL
ENGINEERING | INGENIEUR
civil engineers | ingénieur civil

C S W
landscape architect | architecte paysagiste

nord du projet / project north
nord actuel / true north

2 REV. FOR SPC COMMENTS 230721
1 ISSUED FOR SITE PLAN CONTROL 230504
no revisions date

stamp | firme

ONTARIO ASSOCIATION OF ARCHITECTS
ANDREW REEVES
LICENCE 6464

architect | architecte
linebox
STUDIO

general notes | note générale
1. CONTRACTOR SHALL CHECK AND VERIFY ALL DIMENSIONS AND REPORT ALL ERRORS AND OMISSIONS TO THE ARCHITECT.
2. DO NOT SCALE THE DRAWINGS.
3. NOT FOR CONSTRUCTION UNLESS SIGNED BY THE ARCHITECT.

project title
360 LAURIER AVE W
PROPOSED MIXED-USE RENOVATION
360 LAURIER AVE W | OTTAWA | ON | K1P 1C8
drawing title | titre du dessin

P5 BASEMENT FLOOR PLAN

project number | numéro du projet 2225
drawn | dessiné JH
checked | vérifié JAP / MAR / AR
date | date 11/28/22
scale | échelle 1:100
drawing number | numéro du dessin
A2-098

VEHICLE PARKING PROVIDED (BY FLOOR)	
TYPE	COUNT
LEVEL P5 BASEMENT	
COMPACT (2438x5300)	9
STANDARD (2600x5200)	6
LEVEL P4 BASEMENT	
COMPACT (2438x5300)	9
STANDARD (2600x5200)	5
LEVEL P3 BASEMENT	
ACCESSIBLE (3400x5200)	2
COMPACT (2438x5300)	7
STANDARD (2600x5200)	3
LEVEL P2 BASEMENT	
COMPACT (2438x5300)	6
MOTORCYCLE (1200x2500)	2
STANDARD (2600x5200)	3
LEVEL P1 BASEMENT	
ACCESSIBLE (3400x5200)	1
COMPACT (2438x5300)	5
STANDARD (2600x5200)	2
GRAND TOTAL	60

BICYCLE PARKING PROVIDED (BY FLOOR)	
TYPE	COUNT
LEVEL P4 BASEMENT	
HORIZONTAL DBL STACKED BICYCLE SPACE (SECURE)	8
LEVEL P2 BASEMENT	
HORIZONTAL DBL STACKED BICYCLE SPACE (SECURE)	6
LEVEL 01	
HORIZONTAL DBL STACKED BICYCLE SPACE (SECURE)	54
VERTICAL BICYCLE SPACE (SECURE)	9
GRAND TOTAL	77
REQUIRED	70

BICYCLE PARKING (LOCKER @ PARKING STALL)	
LEVEL	COUNT
LEVEL P5 BASEMENT	13
LEVEL P4 BASEMENT	12
LEVEL P3 BASEMENT	12
GRAND TOTAL	37
GRAND TOTAL WITH ABOVE REQ'D	114

RESIDENTIAL LOCKERS SCHEDULE (BY TYPE)	
TYPE	COUNT
RESIDENTIAL STORAGE LOCKER	
GROUND FLOOR - 36"Wx48"Dx80"H	18
PARKING - 36"Wx48"Dx80"	24
TYPICAL FLOORS - 36"Wx48"Dx80"	98
GRAND TOTAL	140

CLV GROUP DEVELOPMENTS
485 BANK STREET, SUITE 200, OTTAWA K2P 1Z2
client | client

CLELAND JARDINE ENGINEERING LTD.
PROFESSIONAL ENGINEER (P.E.)
PROFESSIONNEL INGENIEUR (P.ING.)
(813) 981-1933
structural engineers | ingénieur structure

Smith + Andersen
MEP engineers | ingénieur MEP

LRL ENGINEERING INC.
civil engineers | ingénieur civil

CSW
landscape architect | architecte paysagiste

nord du projet / project north
nord actuel / true north

2 REV. FOR SPC COMMENTS 230721
1 ISSUED FOR SITE PLAN CONTROL 230504
no revisions date
stamp | firme

ONTARIO ASSOCIATION OF ARCHITECTS
ANDREW REEVES
LICENCE 6464

architect | architecte

linebox STUDIO

general notes | note générale
1. CONTRACTOR SHALL CHECK AND VERIFY ALL DIMENSIONS AND REPORT ALL ERRORS AND OMISSIONS TO THE ARCHITECT.
2. DO NOT SCALE THE DRAWINGS.
3. NOT FOR CONSTRUCTION UNLESS SIGNED BY THE ARCHITECT.

project title

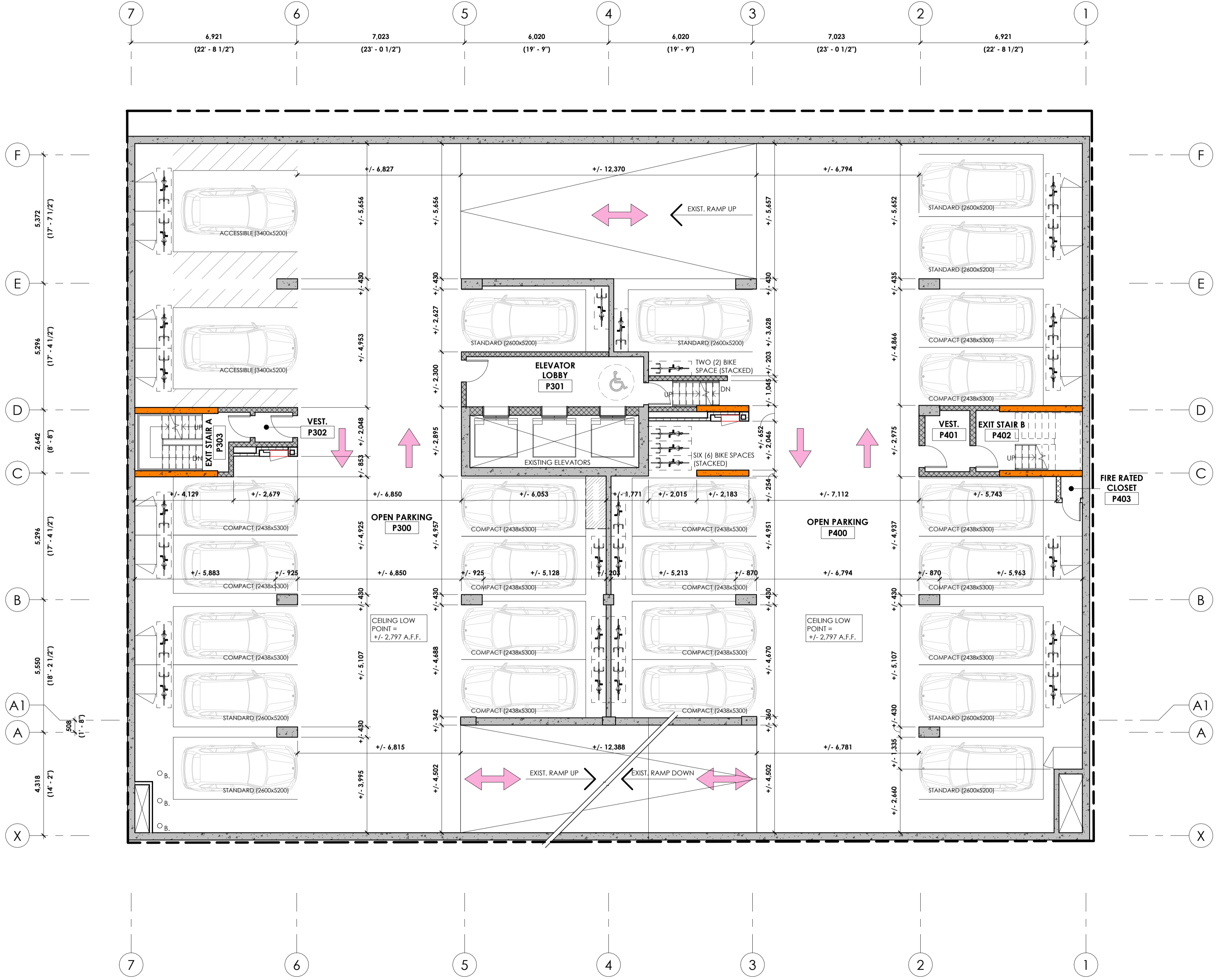
360 LAURIER AVE W
PROPOSED MIXED-USE RENOVATION

360 LAURIER AVE W | OTTAWA | ON | K1P 1C8
drawing title | titre du dessin

P3 AND P4 BASEMENT FLOOR PLAN

project number | numéro du projet 2225
drawn | dessiné JH
checked | vérifié JAP / MAR / AR
date | date 11/28/22
scale | échelle 1:100

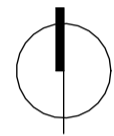
drawing number | numéro du dessin
A2-099



	EXISTING TO REMAIN
	NEW (PROPOSED)



LRL
ENGINEERING | INGENIEURIE



nord du projet
project north



nord actuel
true north

2 REV. FOR SPC COMMENTS	230721
1 ISSUED FOR SITE PLAN CONTROL	230504
no revisions	date

stamp | timbre



architect | architecte

linebox
STUDIO

general notes | note générale

- CONTRACTOR SHALL CHECK AND VERIFY ALL DIMENSIONS AND REPORT ALL ERRORS AND OMISSIONS TO THE ARCHITECT.
- DO NOT SCALE THE DRAWINGS.
- NOT FOR CONSTRUCTION UNLESS SIGNED BY THE ARCHITECT.

project title

360 LAURIER AVE W
PROPOSED MIXED-USE RENOVATION

360 LAURIER AVE W | OTTAWA | ON | K1P 1C8

drawing title | titre du dessin

P1 AND P2 BASEMENT FLOOR PLAN

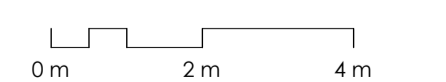
project number | numéro du projet **2225**

drawn | dessiné **JH**

checked | vérifié **JAP / MAR / AR**

date | date **11/28/22**

scale | échelle **1 : 100**



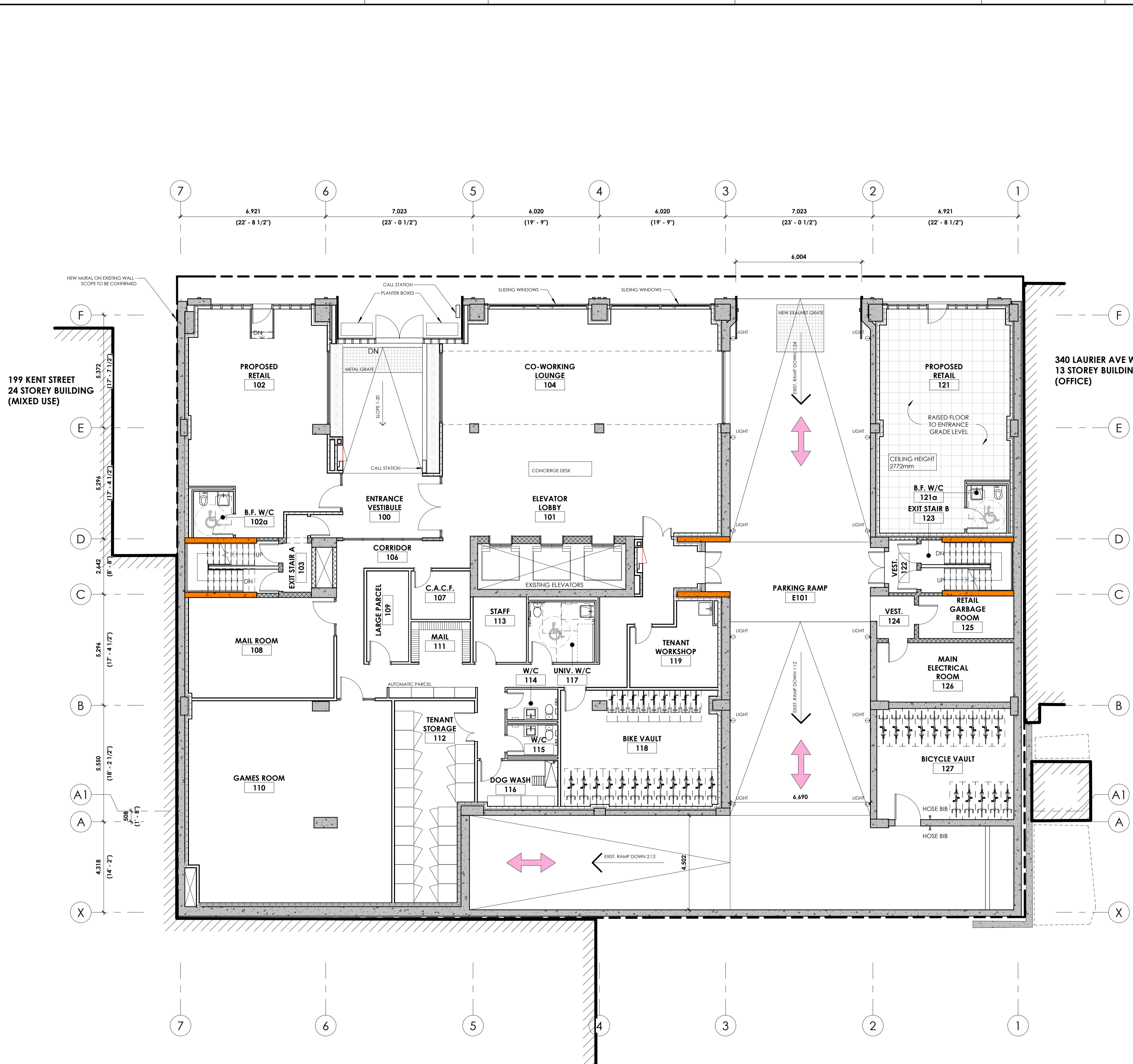
drawing number | numéro du dessin

A2-100

#XXXXX



EXISTING TO REMAIN
NEW (PROPOSED)



BICYCLE PARKING PROVIDED (BY FLOOR)

TYPE	COUNT
LEVEL P4 BASEMENT	
HORIZONTAL DBL STACKED BICYCLE SPACE (SECURE)	8
LEVEL P2 BASEMENT	
HORIZONTAL DBL STACKED BICYCLE SPACE (SECURE)	6
LEVEL 01	
HORIZONTAL DBL STACKED BICYCLE SPACE (SECURE)	54
VERTICAL BICYCLE SPACE (SECURE)	9
GRAND TOTAL REQUIRED	77

BICYCLE PARKING (LOCKER @ PARKING STALL)

LEVEL	COUNT
LEVEL P5 BASEMENT	13
LEVEL P4 BASEMENT	12
LEVEL P3 BASEMENT	12
GRAND TOTAL	37
GRAND TOTAL WITH ABOVE REQ'D	114

RESIDENTIAL LOCKERS SCHEDULE (BY TYPE)

TYPE	COUNT
RESIDENTIAL STORAGE LOCKER	
GROUND FLOOR - 36"Wx48"Dx80"H	18
PARKING - 36"Wx48"Dx80"	24
TYPICAL FLOORS - 36"Wx48"Dx80"	98
GRAND TOTAL	140

CLV GROUP DEVELOPMENTS
485 BANK STREET, SUITE 200, OTTAWA K2P 1Z2
client | client

CLELAND JARDINE ENGINEERING LTD.
PROFESSIONAL ENGINEER
P. ENG. REG. NO. 11533
(613) 981-1933
structural engineers | ingénieur structure

Smith + Andersen
MEP engineers | ingénieur MEP

LRL ENGINEERING INC.
civil engineers | ingénieur civil

C S W
landscape architect | architecte paysagiste

nord du projet / project north
nord actuel / true north

2 REV. FOR SPC COMMENTS 230721
1 ISSUED FOR SITE PLAN CONTROL 230504
no revisions date

stamp | timbre



architect | architecte

linebox STUDIO

general notes | note générale

- CONTRACTOR SHALL CHECK AND VERIFY ALL DIMENSIONS AND REPORT ALL ERRORS AND OMISSIONS TO THE ARCHITECT.
- DO NOT SCALE THE DRAWINGS.
- NOT FOR CONSTRUCTION UNLESS SIGNED BY THE ARCHITECT.

360 LAURIER AVE W
PROPOSED MIXED-USE RENOVATION

360 LAURIER AVE W | OTTAWA | ON | K1P 1C8
drawing title | titre du dessin

LEVEL 01 FLOOR PLAN

project number | numéro du projet 2225
drawn | dessiné JH
checked | vérifié JAP / MAR / AR
date | date 11/28/22
scale | échelle 1 : 100

0 m 2 m 4 m

drawing number | numéro du dessin

1 LEVEL 01 FLOOR PLAN
A2-101 1:100 A0-200

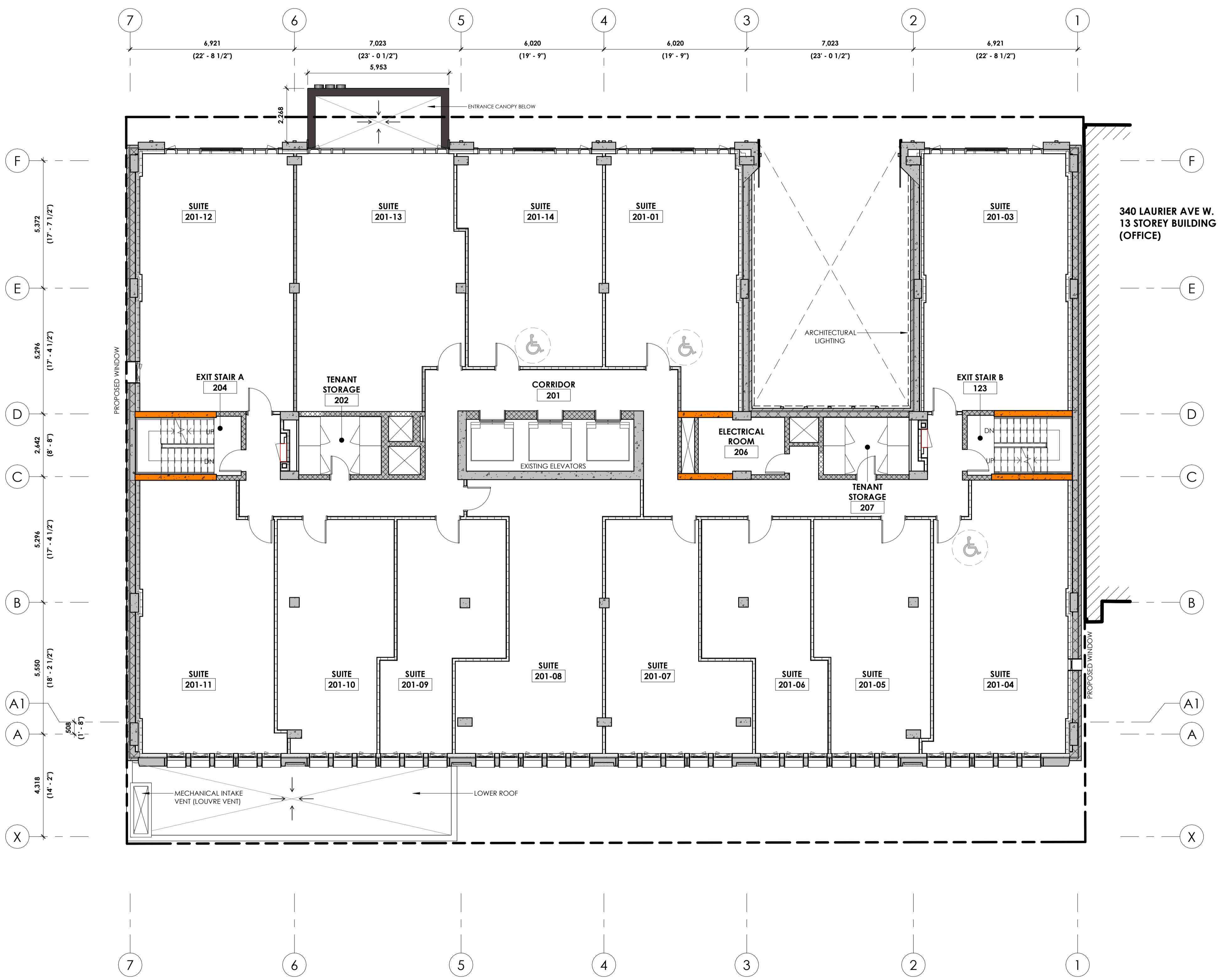
EXISTING TO REMAIN
NEW (PROPOSED)

D07-12-23-0055

#XXXXX

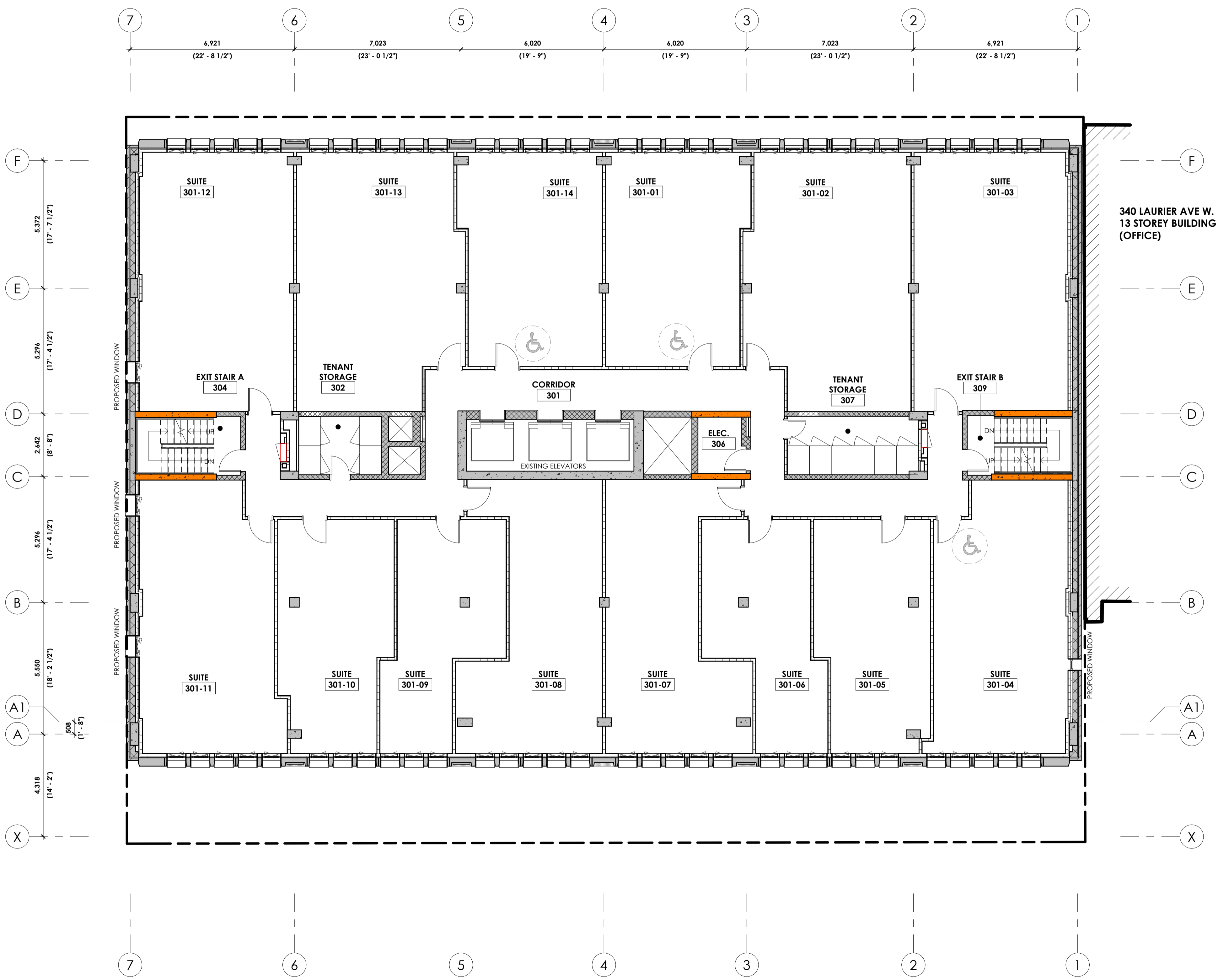
RESIDENTIAL SUITE AREAS			
	TYPE	AREA (SQ.M)	AREA (SF)
LEVEL 02			
SUITE 01	2 BDRM (B.F.) + DEN	54.72 m ²	588.96 ft ²
SUITE 03	2 BDRM	65.54 m ²	705.50 ft ²
SUITE 04	2 BDRM (B.F.)	62.54 m ²	673.13 ft ²
SUITE 05	STUDIO	45.26 m ²	487.16 ft ²
SUITE 06	STUDIO	38.93 m ²	419.04 ft ²
SUITE 07	1 BDRM	47.52 m ²	511.49 ft ²
SUITE 08	1 BDRM + DEN	59.15 m ²	636.69 ft ²
SUITE 09	STUDIO	38.95 m ²	419.30 ft ²
SUITE 10	STUDIO	45.05 m ²	484.91 ft ²
SUITE 11	2 BDRM	62.71 m ²	675.05 ft ²
SUITE 12	2 BDRM	70.20 m ²	755.58 ft ²
SUITE 13	2 BDRM + DEN	72.25 m ²	777.67 ft ²
SUITE 14	1 BDRM (B.F.)	52.31 m ²	563.11 ft ²
LEVEL 03 TO LEVEL 11 [TYPICAL]			
SUITE 01	1 BDRM (B.F.)	52.55 m ²	565.64 ft ²
SUITE 02	2 BDRM + DEN	72.20 m ²	777.17 ft ²
SUITE 03	2 BDRM	70.51 m ²	759.00 ft ²
SUITE 04	2 BDRM (B.F.)	62.54 m ²	673.13 ft ²
SUITE 05	STUDIO	45.26 m ²	487.16 ft ²
SUITE 06	STUDIO	38.93 m ²	419.04 ft ²
SUITE 07	1 BDRM + DEN	56.87 m ²	612.12 ft ²
SUITE 08	1 BDRM + DEN	56.62 m ²	609.44 ft ²
SUITE 09	STUDIO	38.97 m ²	419.42 ft ²
SUITE 10	STUDIO	44.26 m ²	476.41 ft ²
SUITE 11	2 BDRM	63.92 m ²	688.08 ft ²
SUITE 12	2 BDRM	70.48 m ²	758.65 ft ²
SUITE 13	2 BDRM + DEN	72.55 m ²	780.87 ft ²
SUITE 14	1 BDRM (B.F.)	52.59 m ²	566.07 ft ²
TOTAL		8,232.44 m²	88,613.24 ft²

RESIDENTIAL LOCKERS SCHEDULE (BY TYPE)		
TYPE	COUNT	
RESIDENTIAL STORAGE LOCKER		
GROUND FLOOR - 36"Wx48"Dx80"H	18	
PARKING - 36"Wx48"Dx80"	24	
TYPICAL FLOORS - 36"Wx48"Dx80"	98	
GRAND TOTAL	140	

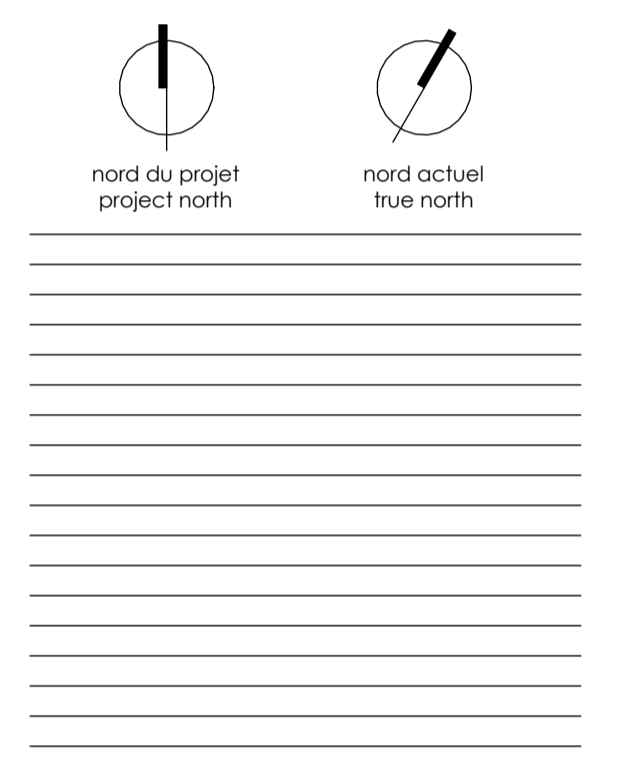


RESIDENTIAL SUITE AREAS			
	TYPE	AREA (SQ.M)	AREA (SF)
LEVEL 02			
SUITE 01	1 BDRM (B.F.) + DEN	54.72 m ²	588.96 ft ²
SUITE 03	2 BDRM	65.54 m ²	705.50 ft ²
SUITE 04	2 BDRM (B.F.)	62.54 m ²	673.13 ft ²
SUITE 05	STUDIO	45.26 m ²	487.16 ft ²
SUITE 06	STUDIO	38.93 m ²	419.04 ft ²
SUITE 07	1 BDRM	47.52 m ²	511.49 ft ²
SUITE 08	1 BDRM + DEN	59.15 m ²	636.69 ft ²
SUITE 09	STUDIO	38.95 m ²	419.30 ft ²
SUITE 10	STUDIO	45.05 m ²	484.91 ft ²
SUITE 11	2 BDRM	62.71 m ²	675.05 ft ²
SUITE 12	2 BDRM	70.20 m ²	755.58 ft ²
SUITE 13	2 BDRM + DEN	72.25 m ²	777.67 ft ²
SUITE 14	1 BDRM (B.F.)	52.31 m ²	563.11 ft ²
LEVEL 03 TO LEVEL 11 (TYPICAL)			
SUITE 01	1 BDRM (B.F.)	52.55 m ²	565.64 ft ²
SUITE 02	2 BDRM + DEN	72.20 m ²	777.17 ft ²
SUITE 03	2 BDRM	70.51 m ²	759.00 ft ²
SUITE 04	2 BDRM (B.F.)	62.54 m ²	673.13 ft ²
SUITE 05	STUDIO	45.26 m ²	487.16 ft ²
SUITE 06	STUDIO	38.93 m ²	419.04 ft ²
SUITE 07	1 BDRM + DEN	56.87 m ²	612.12 ft ²
SUITE 08	1 BDRM + DEN	56.62 m ²	609.44 ft ²
SUITE 09	STUDIO	38.97 m ²	419.42 ft ²
SUITE 10	STUDIO	44.26 m ²	476.41 ft ²
SUITE 11	2 BDRM	63.92 m ²	688.08 ft ²
SUITE 12	2 BDRM	70.48 m ²	758.65 ft ²
SUITE 13	2 BDRM + DEN	72.55 m ²	780.87 ft ²
SUITE 14	1 BDRM (B.F.)	52.59 m ²	566.07 ft ²
TOTAL		8,232.44 m²	88,613.24 ft²

RESIDENTIAL LOCKERS SCHEDULE (BY TYPE)		
TYPE	COUNT	
RESIDENTIAL STORAGE LOCKER		
GROUND FLOOR - 36"Wx48"Dx80"H	18	
PARKING - 36"Wx48"Dx80"	24	
TYPICAL FLOORS - 36"Wx48"Dx80"	98	
GRAND TOTAL	140	



EXISTING TO REMAIN
NEW (PROPOSED)



2 REV. FOR SPC COMMENTS 230721
1 ISSUED FOR SITE PLAN CONTROL 230504
no revisions date



general notes | note générale
1. CONTRACTOR SHALL CHECK AND VERIFY ALL DIMENSIONS AND REPORT ALL ERRORS AND OMISSIONS TO THE ARCHITECT.
2. DO NOT SCALE THE DRAWINGS.
3. NOT FOR CONSTRUCTION UNLESS SIGNED BY THE ARCHITECT.

project title
360 LAURIER AVE W
PROPOSED MIXED-USE RENOVATION
360 LAURIER AVE W | OTTAWA | ON | K1P 1C8
drawing title | titre du dessin

LEVELS 03 TO 11 (TYPICAL) FLOOR PLAN

project number | numéro du projet **2225**
drawn | dessiné **JH**
checked | vérifié **JAP / MAR / AR**
date | date **11/28/22**
scale | échelle **1 : 100**



drawing number | numéro du dessin
A2-103

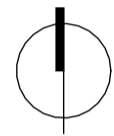


LRL

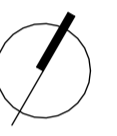
ENGINEERING | INGENIEURIE



CSW



nord du projet
project north



nord actuel
true north



- CONTRACTOR SHALL CHECK AND VERIFY ALL DIMENSIONS AND REPORT ALL ERRORS AND OMISSIONS TO THE ARCHITECT.
- DO NOT SCALE THE DRAWINGS.
- NOT FOR CONSTRUCTION UNLESS SIGNED BY THE ARCHITECT.

360 LAURIER AVE W
PROPOSED MIXED-USE RENOVATION

360 LAURIER AVE W | OTTAWA | ON | K1P 1C8

drawing title | titre du dessin

LEVEL 12 (MAIN ROOF) FLOOR PLAN

project number | numéro du projet 2225

drawn | dessiné JH

checked | vérifié JAP / MAR / AR

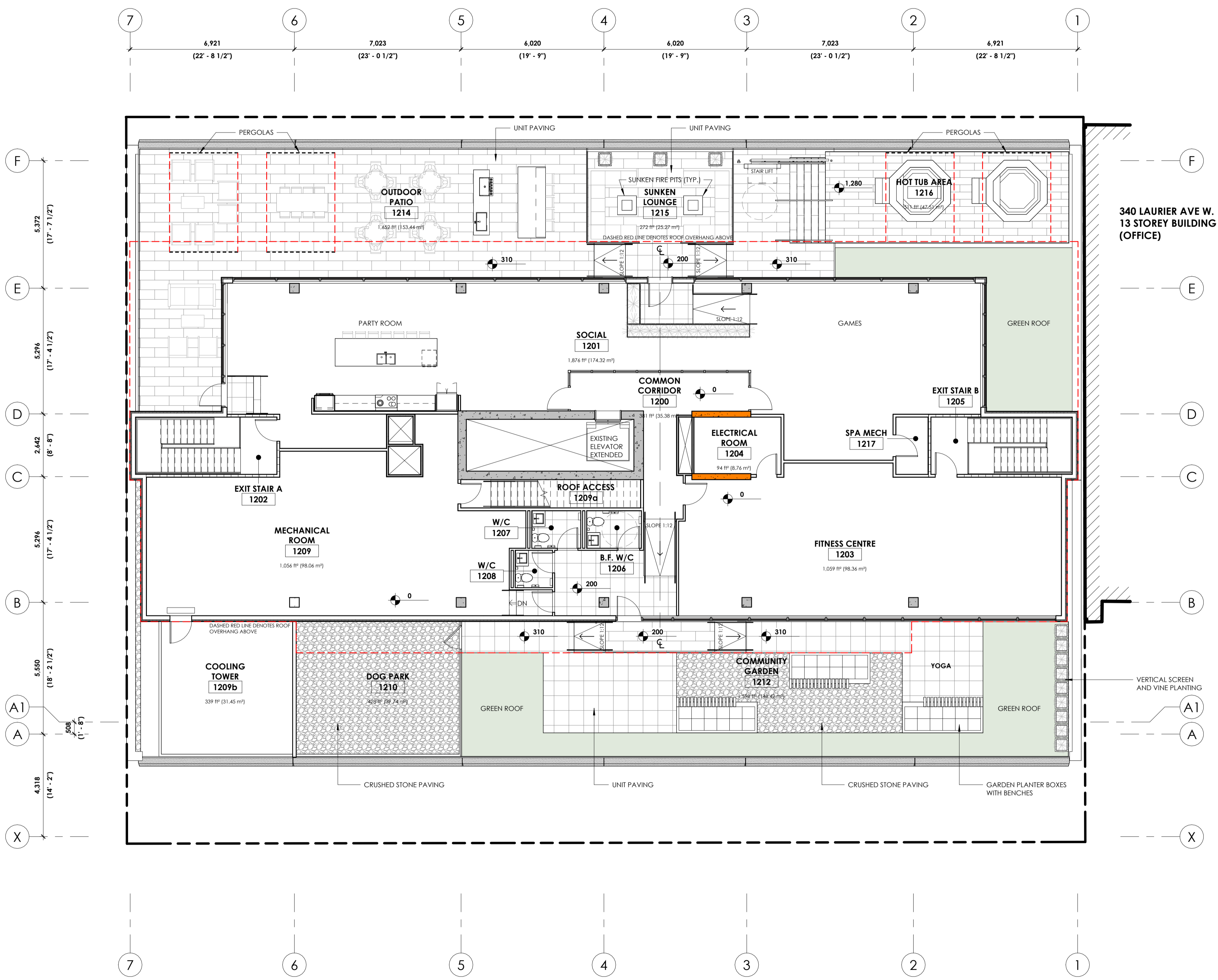
date | date 11/28/22

scale | échelle 1 : 100

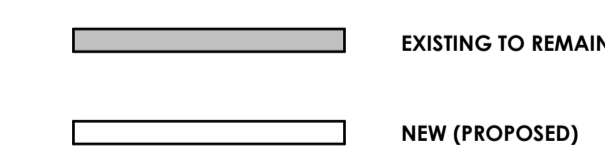
drawing number | numéro du dessin

A2-112

#xxxxx



GENERAL NOTES:
1. REFER TO LANDSCAPE PACKAGE & DRAWINGS FOR ADDITIONAL INFORMATION AND DETAILS.

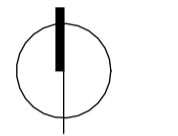


1 LEVEL 12 (MAIN ROOF) FLOOR PLAN
A2-112 1:100 AD-200

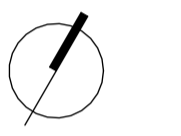
D07-12-23-0055



LRL
 ENGINEERING | INGENIERIE



nord du projet
 project north



nord actuel
 true north

2	REV. FOR SPC COMMENTS	230721
1	ISSUED FOR SITE PLAN CONTROL	230504
no	revisions	date

stamp | timbre



architect | architecte



general notes | note générale

- CONTRACTOR SHALL CHECK AND VERIFY ALL DIMENSIONS AND REPORT ALL ERRORS AND OMISSIONS TO THE ARCHITECT.
- DO NOT SCALE THE DRAWINGS.
- NOT FOR CONSTRUCTION UNITS, SIGNED BY THE ARCHITECT.

project title

360 LAURIER AVE W
 PROPOSED MIXED-USE RENOVATION

360 LAURIER AVE W | OTTAWA | ON | K1P 1C8

drawing title | titre du dessin

LEVEL 13 (MECH. PENTHOUSE) FLOOR PLAN

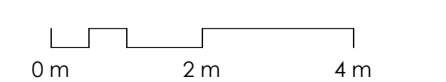
project number | numéro du projet **2225**

drawn | dessiné **JH**

checked | vérifié **JAP / MAR / AR**

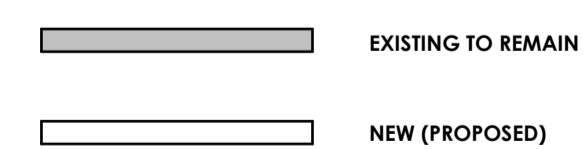
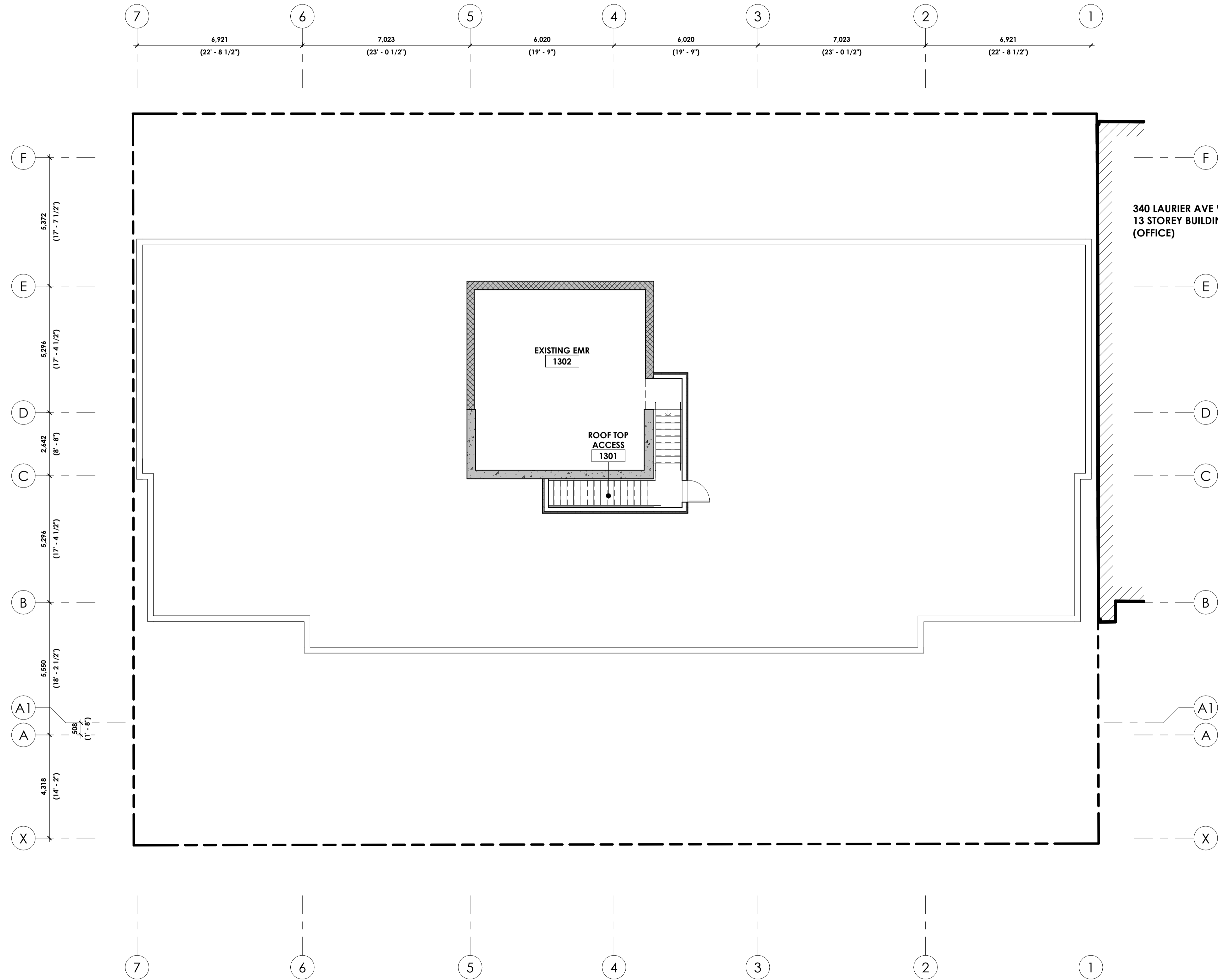
date | date **12/14/22**

scale | échelle **1 : 100**



drawing number | numéro du dessin

A2-113



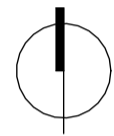


LRL

ENGINEERING | INGÉNIEURIE



CSW



nord du projet
project north



nord actuel
true north

2 REV. FOR SPC COMMENTS 230721

1 ISSUED FOR SITE PLAN CONTROL 230504

no revisions date

stamp | timbre



architect | architecte



general notes | note générale

- CONTRACTOR SHALL CHECK AND VERIFY ALL DIMENSIONS AND REPORT ALL ERRORS AND OMISSIONS TO THE ARCHITECT.
- DO NOT SCALE THE DRAWINGS.
- NOT FOR CONSTRUCTION UNITS, SIGNED BY THE ARCHITECT.

project title

360 LAURIER AVE W
 PROPOSED MIXED-USE RENOVATION

360 LAURIER AVE W | OTTAWA | ON | K1P 1C8

drawing title | titre du dessin

ROOF PLAN (LOWER)

project number | numéro du projet 2225

drawn | dessiné JH

checked | vérifié JAP / MAR / AR

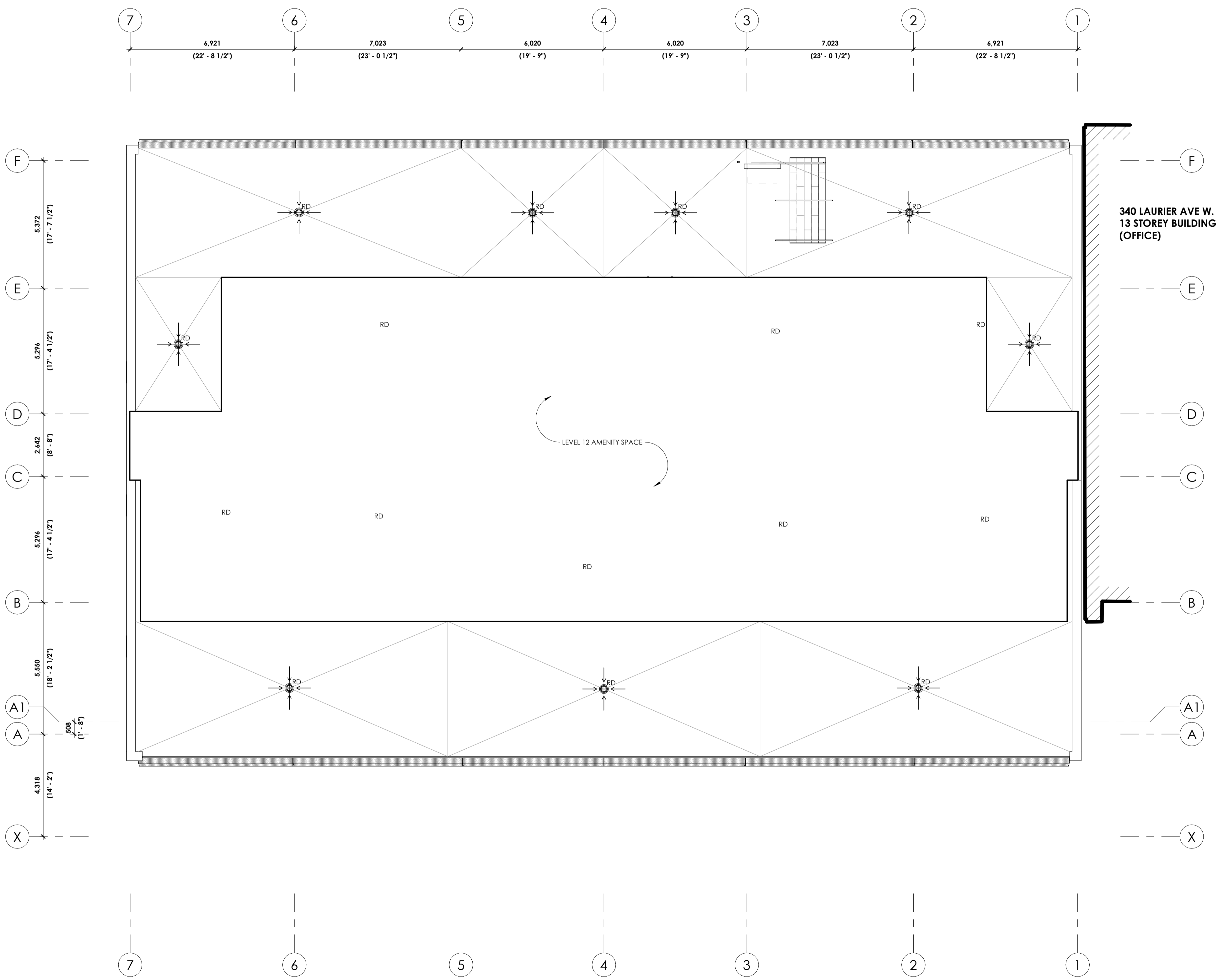
date | date 04/10/23

scale | échelle 1 : 100

drawing number | numéro du dessin

A2-120

#xxxxxx



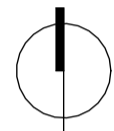


LRL

ENGINEERING | INGENIERIE



CSW



nord du projet
project north



nord actuel
true north

2	REV. FOR SPC COMMENTS	230721
1	ISSUED FOR SITE PLAN CONTROL	230504

no revisions date

stamp | fibre



architect | architecte



general notes | note générale

- CONTRACTOR SHALL CHECK AND VERIFY ALL DIMENSIONS AND REPORT ALL ERRORS AND OMISSIONS TO THE ARCHITECT.
- DO NOT SCALE THE DRAWINGS.
- NOT FOR CONSTRUCTION UNITS, SIGNED BY THE ARCHITECT.

project title

360 LAURIER AVE W
 PROPOSED MIXED-USE RENOVATION

360 LAURIER AVE W | OTTAWA | ON | K1P 1C8

drawing title | titre du dessin

ROOF PLAN (UPPER)

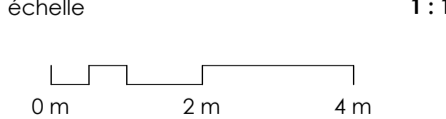
project number | numéro du projet **2225**

drawn | dessiné **JH**

checked | vérifié **JAP / MAR / AR**

date | date **12/14/22**

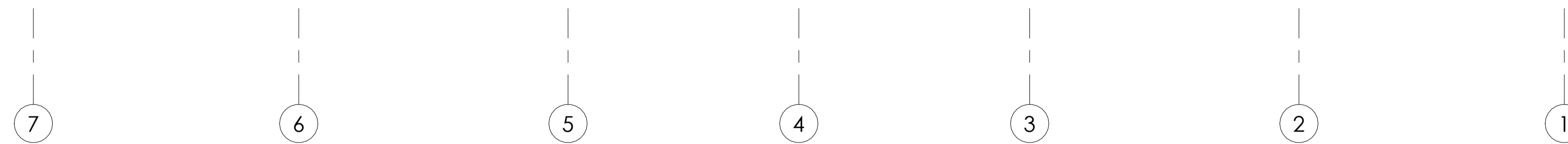
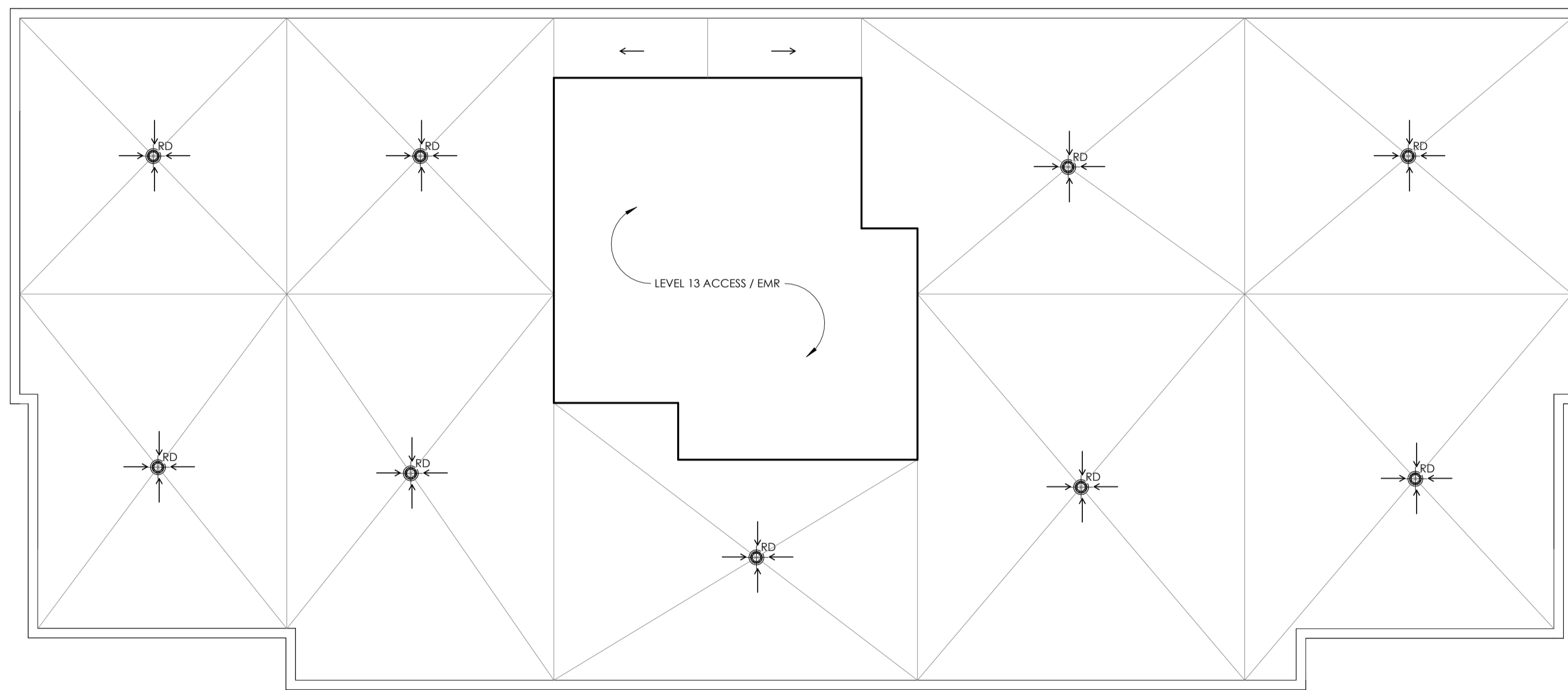
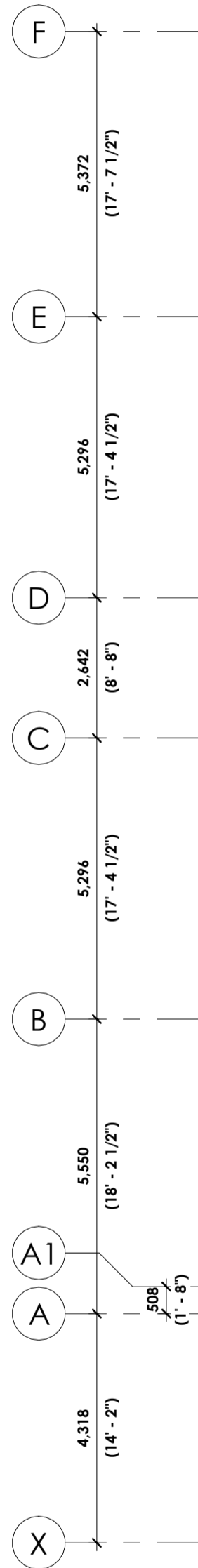
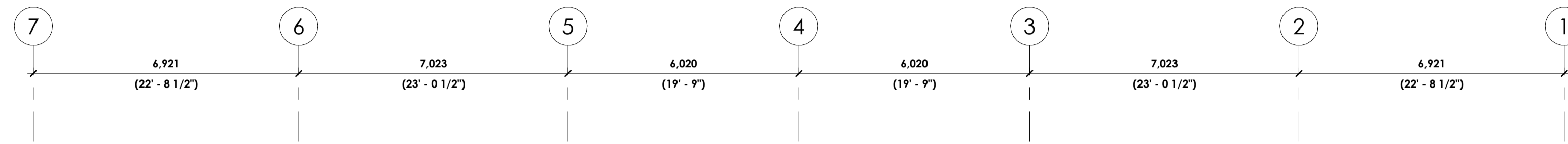
scale | échelle **1 : 100**



drawing number | numéro du dessin

A2-121

#xxxxxx





1 NORTH (LAURIER AVE W) ELEVATION
A4-100 1:100

MATERIAL LEGEND

TAG	DESCRIPTION	TAG	DESCRIPTION	TAG	DESCRIPTION	TAG	DESCRIPTION	TAG	DESCRIPTION
1	CLEAR GLASS (WINDOW), COLOUR TBD, DOUBLE GLAZED, LOW E COATING	4	ALUMINUM PROFILED CLADDING.	7	NOT USED.	10	ACOUSTICAL LOUVRES AT MECHANICAL PENTHOUSE.	13	CLEAR GLASS (CURTAIN WALL), COLOUR TBD, DOUBLE GLAZED, LOW E COATING.
2	EXTERIOR LIGHTING	5	5'-0" HIGH GLASS GUARDS	8	NOT USED.	11	ENTRANCE TO UNDERGROUND PARKING, TO PEDESTRIAN LIGHTING AND ARCHITECTURAL FEATURES.	14	COLOURED GLASS FILM (WINDOW), COLOUR TBD, DOUBLE GLAZED, LOW E COATING.
3	EXTERIOR GLASS GUARD, COLOUR TBD.	6	METAL SIGNAGE.	9	EXISTING RIB PROFILED PRECAST PANEL.	12	SPANDREL PANEL.	15	EXISTING EXTERIOR BRICK.
								16	METAL EXTRUSION CANOPY.
								17	EXTERIOR GLASS PATIO DOORS, COLOUR TBD, DOUBLE GLAZED, LOW E COATING.
								18	CLEAR GLASS (PATIO DOORS), COLOUR TBD, DOUBLE GLAZED, LOW E COATING.
								19	ALLOW FOR NEW PUNCHED WINDOWS IN EXISTING PRECAST PANEL OPENINGS WHERE OPENINGS ARE NOT OBSTRUCTED BY COLUMNS.
								20	SPA ENCLOSURE.
								21	SLIDING WINDOWS.

GENERAL NOTES:

- ALL REMAINING EXISTING WINDOWS TO BE REPLACED.
- ALLOW FOR INTAKE AND EXHAUST VENTS FOR SUITE FAN COIL UNITS, INTEGRATED INTO NEW EXTERIOR WINDOWS, JULIET BALCONIES AND/OR EXTERIOR WALLS.
- COLOURED GLASSING TO BE FILM, INSTALLED ON-SITE.
- BIRD FRIENDLY GLASS - AS PER CITY BIRD SAFE GUIDELINES. GUIDELINE 2 - TREATMENTS TO BE APPLIED TO A MINIMUM OF 90% OF THE GLASS WITHIN THE FIRST 16 METRES OF HEIGHT.
- OPERABLE WINDOWS TO HAVE A MECHANISM CAPABLE OF CONTROLLING THE FREE SWINGING OR SLIDING OF THE OPENABLE PART OF THE WINDOW SO AS TO LIMIT ANY CLEAR UNOBSTRUCTED OPENING TO A SIZE THAT WILL PREVENT THE PASSAGE OF A SPHERE HAVING A DIAMETER MORE THAN 100mm, OR BE PRETECTED BY A GUARD NO LESS THAN 1075mm.

2 REV. FOR SPC COMMENTS	230721
1 ISSUED FOR SITE PLAN CONTROL	230504
no revisions	date



- general notes | note générale
- CONTRACTOR SHALL CHECK AND VERIFY ALL DIMENSIONS AND REPORT ALL ERRORS AND OMISSIONS TO THE ARCHITECT.
 - DO NOT SCALE THE DRAWINGS.
 - NOT FOR CONSTRUCTION UNLESS SIGNED BY THE ARCHITECT.

360 LAURIER AVE W
PROPOSED MIXED-USE RENOVATION

360 LAURIER AVE W | OTTAWA | ON | K1P 1C8

drawing title | titre du dessin

NORTH (LAURIER AVE W) ELEVATION

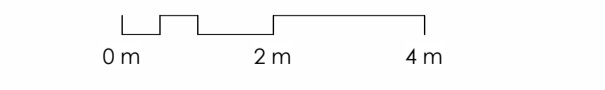
project number | numéro du projet 2225

drawn | dessiné JH

checked | vérifié JAP / MAR / JR

date | date 11/28/22

scale | échelle 1:100



drawing number | numéro du dessin

A4-100

2 - REV. FOR SPC COMMENTS	230721
1 - ISSUED FOR SITE PLAN CONTROL	230504

no revisions _____ date _____

stamp | timbre _____



architect | architecte



general notes | note générale
1. CONTRACTOR SHALL CHECK AND VERIFY ALL DIMENSIONS AND REPORT ALL ERRORS AND OMISSIONS TO THE ARCHITECT.
2. DO NOT SCALE THE DRAWINGS.
3. NOT FOR CONSTRUCTION UNTIL SIGNED BY THE ARCHITECT.

project title

360 LAURIER AVE W
PROPOSED MIXED-USE RENOVATION

360 LAURIER AVE W | OTTAWA | ON | K1P 1C8

drawing title | titre du dessin

SOUTH ELEVATION

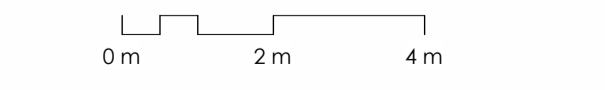
project number | numéro du projet **2225**

drawn | dessiné **JH**

checked | vérifié **JAP / MAR / JR**

date | date **11/28/22**

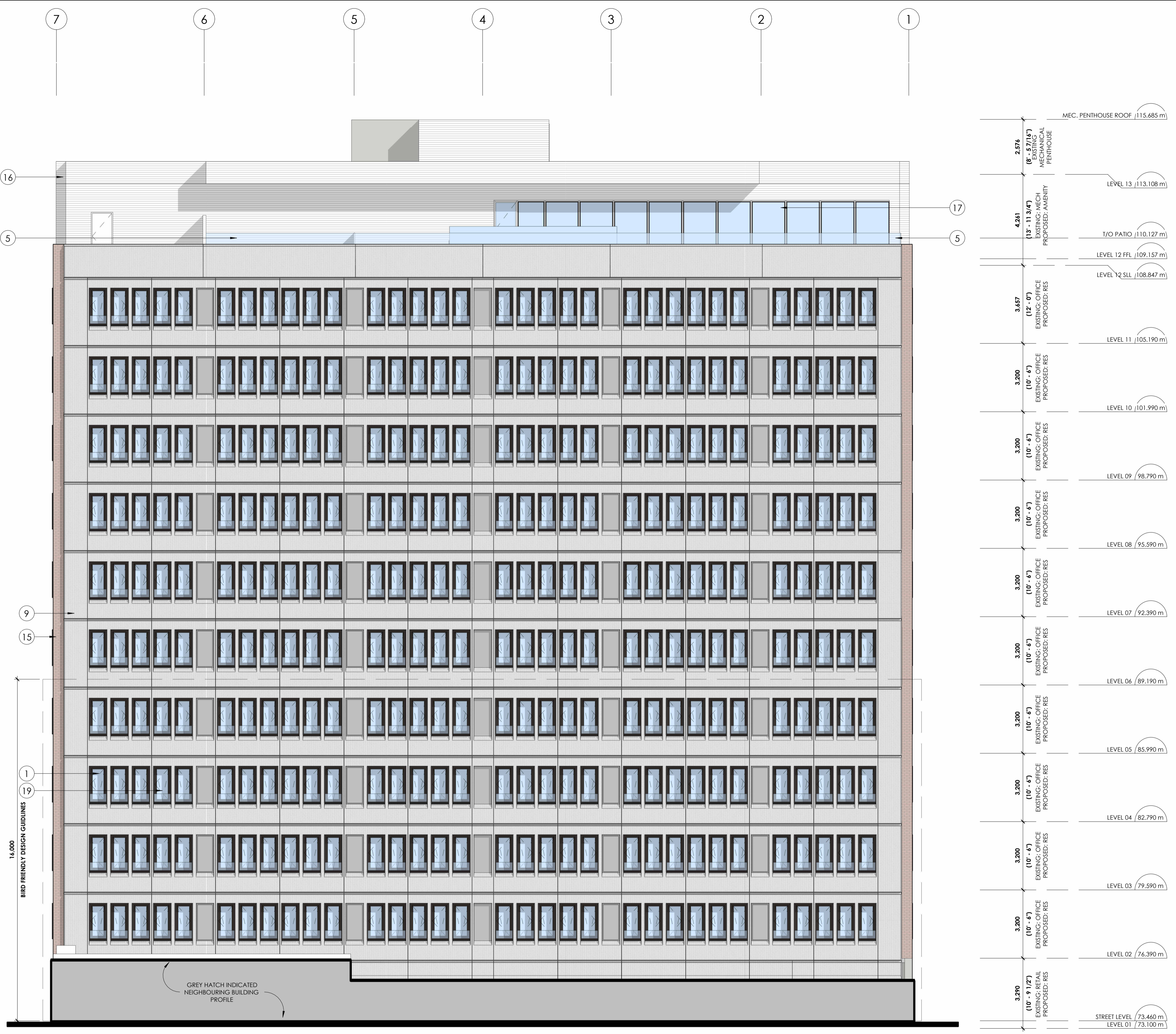
scale | échelle **1 : 100**



drawing number | numéro du dessin

A4-102

#XXXXX



1 SOUTH ELEVATION
A4-102 1:100

MATERIAL LEGEND					
TAG	DESCRIPTION	TAG	DESCRIPTION	TAG	DESCRIPTION
1	CLEAR GLASS (WINDOW), COLOUR TBD, DOUBLE GLAZED, LOW E COATING	4	ALUMINUM PROFILED CLADDING.	7	NOT USED.
2	EXTERIOR LIGHTING	5	5'-0" HIGH GLASS GUARDS	8	NOT USED.
3	EXTERIOR GLASS GUARD, COLOUR TBD.	6	METAL SIGNAGE.	9	EXISTING RIB PROFILED PRECAST PANEL.
				10	ACOUSTICAL LOUVRES AT MECHANICAL PENTHOUSE.
				11	ENTRANCE TO UNDERGROUND PARKING, TO PEDESTRIAN LIGHTING AND ARCHITECTURAL FEATURES.
				12	SPANDREL PANEL.
				13	CLEAR GLASS (CURTAIN WALL), COLOUR TBD, DOUBLE GLAZED, LOW E COATING.
				14	COLOURED GLASS FILM (WINDOW), COLOUR TBD, DOUBLE GLAZED, LOW E COATING.
				15	EXISTING EXTERIOR BRICK.
				16	METAL EXTRUSION CANOPY.
				17	EXTERIOR GLASS PATIO DOORS, COLOUR TBD, DOUBLE GLAZED, LOW E COATING.
				18	CLEAR GLASS (PATIO DOORS), COLOUR TBD, DOUBLE GLAZED, LOW E COATING.
				19	ALLOW FOR NEW PUNCHED WINDOWS IN EXISTING PRECAST PANEL OPENINGS WHERE OPENINGS ARE NOT OBSTRUCTED BY COLUMNS.
				20	SPA ENCLOSURE.
				21	SLIDING WINDOWS.

GENERAL NOTES:
1. ALL REMAINING EXISTING WINDOWS TO BE REPLACED.
2. ALLOW FOR INTAKE AND EXHAUST VENTS FOR SUITE FAN COIL UNITS, INTEGRATED INTO NEW EXTERIOR WINDOWS, JULIET BALCONIES AND/OR EXTERIOR WALLS.
3. COLOURED GLAZING TO BE FILM, INSTALLED ON-SITE.
4. BIRD FRIENDLY GLASS - AS PER CITY BIRD SAFE GUIDELINES.
5. GUIDELINE 2 - TREATMENTS TO BE APPLIED TO A MINIMUM OF 90% OF THE GLASS WITHIN THE FIRST 16 METRES OF HEIGHT.
6. OPERABLE WINDOWS TO HAVE A MECHANISM CAPABLE OF CONTROLLING THE FREE SWINGING OR SLIDING OF THE OPERABLE PART OF THE WINDOW SO AS TO LIMIT ANY CLEAR UNOBSTRUCTED OPENING TO A SIZE THAT WILL PREVENT THE PASSAGE OF A SPHERE HAVING A DIAMETER MORE THAN 100mm, OR BE PRETECTED BY A GUARD NO LESS THAN 1075mm.

D07-12-23-0055

2 REV. FOR SPC COMMENTS 230721

1 ISSUED FOR SITE PLAN CONTROL 230504

no revisions date

stamp | timbre



general notes | note générale
 1. CONTRACTOR SHALL CHECK AND VERIFY ALL DIMENSIONS AND REPORT ALL ERRORS AND OMISSIONS TO THE ARCHITECT.
 2. DO NOT SCALE THE DRAWINGS.
 3. NOT FOR CONSTRUCTION UNLESS SIGNED BY THE ARCHITECT.

project title

360 LAURIER AVE W
 PROPOSED MIXED-USE RENOVATION

360 LAURIER AVE W | OTTAWA | ON | K1P 1C8

drawing title | titre du dessin

WEST ELEVATION

project number | numéro du projet **2225**

drawn | dessiné **JH**

checked | vérifié **JAP / MAR / JR**

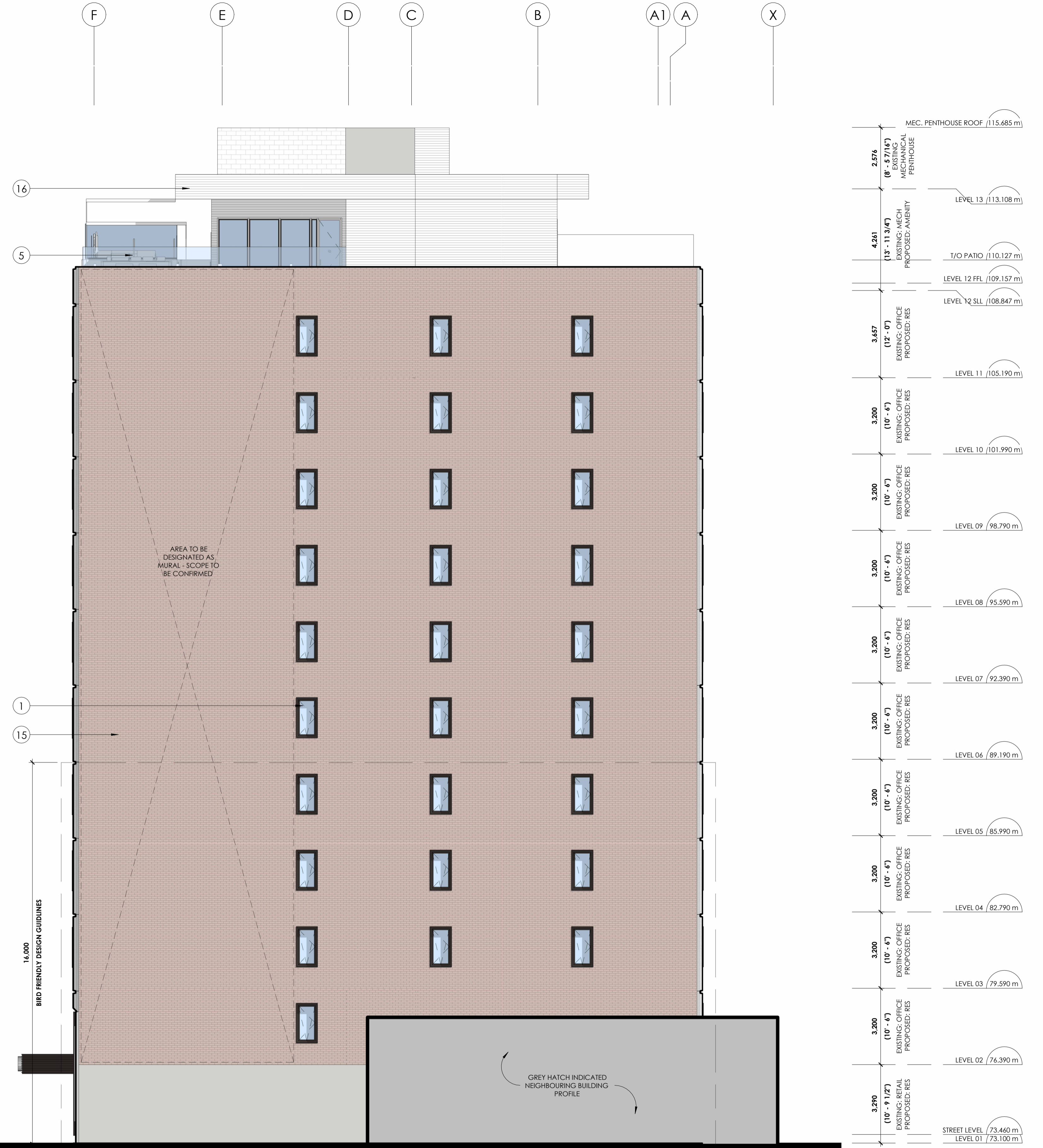
date | date **11/28/22**

scale | échelle **1 : 100**

0 m 2 m 4 m

drawing number | numéro du dessin

A4-103



1 WEST ELEVATION
 A4-103 1:100

MATERIAL LEGEND

TAG	DESCRIPTION	TAG	DESCRIPTION	TAG	DESCRIPTION	TAG	DESCRIPTION	TAG	DESCRIPTION	TAG	DESCRIPTION		
1	CLEAR GLASS (WINDOW), COLOUR TBD, DOUBLE GLAZED, LOW E COATING	4	ALUMINUM PROFILED CLADDING.	7	NOT USED.	10	ACOUSTICAL LOUVRES AT MECHANICAL PENTHOUSE.	13	CLEAR GLASS (CURTAIN WALL), COLOUR TBD, DOUBLE GLAZED, LOW E COATING.	16	METAL EXTRUSION CANOPY.	19	ALLOW FOR NEW PUNCHED WINDOWS IN EXISTING PRECAST PANEL OPENINGS WHERE OPENINGS ARE NOT OBSTRUCTED BY COLUMNS.
2	EXTERIOR LIGHTING	5	5'-0" HIGH GLASS GUARDS	8	NOT USED.	11	ENTRANCE TO UNDERGROUND PARKING, TO PEDESTRIAN LIGHTING AND ARCHITECTURAL FEATURES.	14	COLOURED GLASS FILM (WINDOW), COLOUR TBD, DOUBLE GLAZED, LOW E COATING.	17	EXTERIOR GLASS PATIO DOORS, COLOUR TBD, DOUBLE GLAZED, LOW E COATING.	20	SPA ENCLOSURE.
3	EXTERIOR GLASS GUARD, COLOUR TBD.	6	METAL SIGNAGE.	9	EXISTING RIB PROFILED PRECAST PANEL.	12	SPANDREL PANEL.	15	EXISTING EXTERIOR BRICK.	18	CLEAR GLASS (PATIO DOORS), COLOUR TBD, DOUBLE GLAZED, LOW E COATING.	21	SLIDING WINDOWS.

GENERAL NOTES:

1. ALL REMAINING EXISTING WINDOWS TO BE REPLACED.
2. ALLOW FOR INTAKE AND EXHAUST VENTS FOR SUITE FAN COIL UNITS, INTEGRATED INTO NEW EXTERIOR WINDOWS, JULIET BALCONIES AND/OR EXTERIOR WALLS.
3. COLOURED GLAZING TO BE FILM, INSTALLED ON-SITE.
4. BIRD FRIENDLY GLASS - AS PER CITY BIRD SAFE GUIDELINES.
 GUIDELINE 2 - TREATMENTS TO BE APPLIED TO A MINIMUM OF 90% OF THE GLASS WITHIN THE FIRST 16 METRES OF HEIGHT.
5. OPERABLE WINDOWS TO HAVE A MECHANISM, CAPABLE OF CONTROLLING THE FREE SWINGING OR SLIDING OF THE OPERABLE PART OF THE WINDOW SO AS TO LIMIT ANY CLEAR UNOBSTRUCTED OPENING TO A SIZE THAT WILL PREVENT THE PASSAGE OF A SPHERE HAVING A DIAMETER MORE THAN 100mm, OR BE PRETECTED BY A GUARD NO LESS THAN 1075mm.

