

LEGEND

- 0.24 ha: AREA (hectares)
- A-01: AREA ID
- 0.65: RUN-OFF COEFFICIENT
- Blue outline: PROPOSED STORM DRAINAGE AREA BOUNDARY
- Circle with '100': PROPOSED STORM MANHOLE / SEWER AND FLOW DIRECTION
- CB1: PROPOSED ROAD CATCHBASIN
- CBMH1: CATCH BASIN MANHOLE
- Arrow: MAJOR SYSTEM FLOW ROUTE
- Blue dashed line: MAX STATIC PONDING LIMITS
- Red dashed line: 100-YR PONDING LIMITS

0.073	0.011
A-01	A-03
0.81	0.35

0.029	0.095
A-04	A-02
0.66	0.75

BLOCK 1
 (20 UNITS)
 FF1=94.42
 TF=93.29
 FF0=91.31
 USF=90.96

STM MANHOLE TABLE

MANHOLE ID	SIZE (mm)	T/G ELEV (m)	INVERT (m)	ICD	100YR DESIGN FLOW (L/s)	100YR HEAD (m)
137	1200mmØ	92.94	E=91.14 N=90.65	-	-	-
139	1200mmØ	92.90	S=90.28 NE=90.21	-	-	-
CBMH1	1200mmØ	92.50	SW=90.04 E=90.04	TEMPEST LMF (VORTEX 50)	3.5	2.68

PONDING

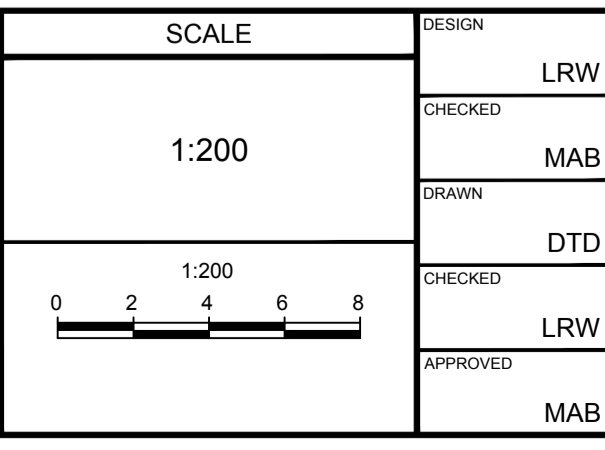
PONDING ID	STRUCTURE	100 YEAR PONDING ELEVATION	100 YEAR PONDING DEPTH (m)	100 YEAR +20% PONDING ELEVATION	100 YEAR +20% PONDING DEPTH (m)	MAX STATIC PONDING ELEVATION	MAX STATIC PONDING DEPTH (m)
P1	CBMH1	92.72	0.22	92.73	0.23	92.70	0.20
P2	CB3	92.75	0.10	92.78	0.13	92.85	0.20
P3	CB1	92.79	0.14	92.83	0.18	92.95	0.30

Melanie Gervais
MÉLANIE GERVAIS
 PLANNER III
 PLANNING, REAL ESTATE & ECONOMIC
 DEVELOPEMENT DEPARTMENT, CITY OF OTTAWA

APPROVED
 By Melanie Gervais at 10:09 am, Jan 22, 2024

NOTE:
 THE POSITION OF ALL POLE LINES, CONDUITS, WATERMANS, SEWERS AND OTHER UNDERGROUND AND OVERGROUND UTILITIES AND STRUCTURES IS NOT NECESSARILY SHOWN ON THE CONTRACT DRAWINGS, AND WHERE SHOWN, THE ACCURACY OF THE POSITION OF SUCH UTILITIES AND STRUCTURES IS NOT GUARANTEED. BEFORE STARTING WORK, DETERMINE THE EXACT LOCATION OF ALL SUCH UTILITIES AND STRUCTURES AND ASSUME ALL LIABILITY FOR DAMAGE TO THEM.

No.	REVISION	DATE	BY
1.	CITY SUBMISSION	FEB 24/23	MAB



FOR REVIEW ONLY

DESIGN: LRW
 CHECKED: MAB
 DRAWN: DTD
 CHECKED: LRW
 APPROVED: MAB

LICENSED PROFESSIONAL ENGINEER
 L.R. WILSON
 100160065
 PROVINCE OF ONTARIO

LICENSED PROFESSIONAL ENGINEER
 M.A. BISSETT
 2023.02.24
 PROVINCE OF ONTARIO

NOVATECH
 Engineers, Planners & Landscape Architects
 Suite 200, 240 Michael Cowpland Drive
 Ottawa, Ontario, Canada K2M 1P6
 Telephone: (613) 254-9643
 Facsimile: (613) 254-5867
 Website: www.novatech-eng.com

CITY OF OTTAWA
 285 MOUNTSHANNON DRIVE - BLOCK 1

STORM DRAINAGE AREA PLAN

PROJECT No: 112021-04
 REV: REV #1
 DRAWING No: 112021-04-STM

M:\2021\112021\Block 1\CADD\Design\112021-04-STM.dwg, STM, Feb 23, 2023, 2:10pm, dduffon