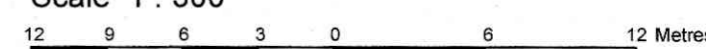


PART OF LOT 10
CONCESSION 3 (RIDEAU FRONT)
Geographic Township of Nepean
CITY OF OTTAWA

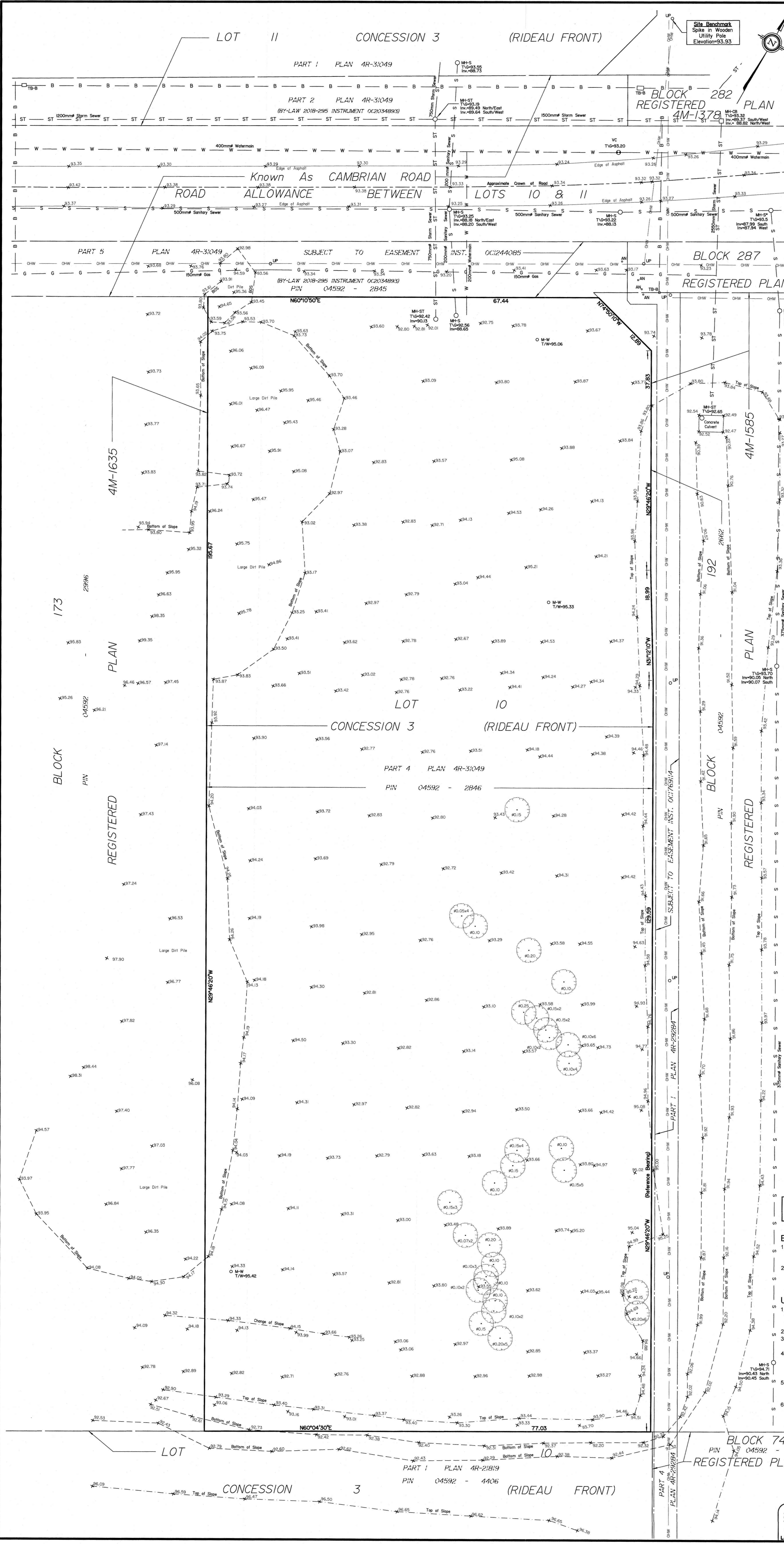
Surveyed by Annis, O'Sullivan, Vollebek Ltd.

Scale 1 : 300



Metric
DISTANCES SHOWN ON THIS PLAN ARE IN METRES AND
CAN BE CONVERTED TO FEET BY DIVIDING BY 0.3048

March 28, 2023
Date
E. H. Henweyer
Ontario Land Surveyor



Notes & Legend

- Denotes
- ⊕ VC - Valve Chamber (Watermain)
 - ⊕ WV - Water Valve
 - ST — - Underground Storm Sewer
 - S — - Underground Sanitary Sewer
 - W — - Underground Water
 - G — - Underground Gas
 - OHW — - Overhead Wires
 - B — - Bell/Telus
 - UP - Utility Pole
 - AN - Anchor
 - - Deciduous Tree
 - TB-B - Bell Terminal Box
 - MH-ST - Maintenance Hole (Storm Sewer)
 - MH-S - Maintenance Hole (Sanitary)
 - ⊘ - Diameter
 - +65.00 - Location of Elevations
 - - Property Line
 - T/G - Top of Grade Elevation
 - Inv - Invert
 - M-W - Monitoring Well
 - T/W - Top of Well Elevation
 - BOS - Bottom of Slope
- SITE AREA = 14998 m²
- BOUNDARY INFORMATION COMPILED FROM
REGISTERED PLAN 4M-1635, REGISTERED PLAN
4M-1585 and Plan 4R-31049.

Topographic data was collected under Winter Conditions.
Snow cover and ice preclude determining location and
elevation of some topographical data that is otherwise visible.

- ELEVATION NOTES**
- Elevations shown are geodetic and are referred to the CGVD25 geodetic datum, derived from vertical control monument No. 019680071 having a published elevation of 99.742 metres.
 - It is the responsibility of the user of this information to verify that the job benchmark has not been altered or disturbed and that its relative elevation and description agrees with the information shown on this drawing.

- UTILITY NOTES**
- This drawing cannot be accepted as acknowledging all of the utilities and it will be the responsibility of the user to contact the respective utility authorities for confirmation.
 - Only visible surface utilities were located.
 - A field location of underground plant by the pertinent utility authority is mandatory before any work involving breaking ground, probing, excavating etc.
 - Underground Utility data derived from City of Ottawa Utility Sheet reference CC-B-20 and CC-B-21, City of Ottawa Plans reference D07-16-16-0023 P1 Plan No. 17586, sheets 18 & 26, and City of Ottawa Plans reference D07-16-19-0005 Plan No. 17803, sheets 63 & 64.
 - Sanitary and storm sewer grades and inverts were derived from City of Ottawa Plans reference D07-16-16-0023 P1 Plan No. 17586, sheets 18 & 26, and City of Ottawa Plans reference D07-16-19-0005 Plan No. 17803, sheets 63 & 64.
 - Location of storm and sewer manhole marked with * derived from City of Ottawa Plans reference D07-16-16-0023 P1 Plan No. 17586, sheets 18 & 26 and D07-16-19-0005 Plan No. 17803, sheets 63 & 64.