

# COMMERCIAL DEVELOPMENT

CAMBRIAN RD, BARRHAVEN, ONTARIO

21.326SD



**TURNER  
FLEISCHER**

67 Lesmill Rd  
Toronto, ON, M3B 2T8  
Contact Name:  
Phone Number: 416-425-2222 ext  
Email: first.last@turnerfleischer.com

**ISSUED FOR SPA  
2023-05-01**



This drawing, as an instrument of service, is provided by and is the property of Turner Fleischer Architects Inc. The contractor must verify and accept responsibility for all dimensions and conditions on site and must notify Turner Fleischer Architects Inc. of any variations from the supplied information. This drawing is not to be scaled. The architect is not responsible for the accuracy of any dimensions, elevations, materials, etc., information shown on this drawing. Refer to the appropriate consultant's drawings before proceeding with the work. The contractor must confirm for all applicable codes and requirements of applicable building jurisdiction. The contractor working from drawings not specifically marked 'For Construction' must assume full responsibility and their risk for any correction or damage resulting from the work.

The site plan prepared by Turner Fleischer is based on a legal survey showing the boundaries of the lands together with the current location of any existing buildings, features or encroachments prepared by Arno, P. (Professional - Ontario), dated 2023-05-28 as provided by Loblaw Companies Limited.





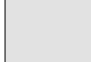


### LEGAL DESCRIPTION

TOPOGRAPHIC PLAN OF PART OF LOT 10  
CONCESSION 3 (RIDEAU FRONT)  
GEOGRAPHIC TOWNSHIP OF NEPEAN  
CITY OF OTTAWA

### STATISTICS

|                          |                |               |
|--------------------------|----------------|---------------|
| SITE AREA                | ±3.72 ACRES    | ±1.51 HA.     |
| PROPOSED BUILDING A AREA | ±34,496 S.F.   | ±3,205 S.M.   |
| MEZZANINE AREA           | ±2,595 S.F.    | ±241 S.M.     |
| TOTAL BUILDING A AREA    | ±37,091 S.F.   | ±3,446 S.M.   |
| PROPOSED BUILDING B AREA | ±5,050 S.F.    | ±469 S.M.     |
| PROPOSED ME ROOM         | ±150 S.F.      | ±14 S.M.      |
| TOTAL BUILDING B AREA    | ±5,200 S.F.    | ±483 S.M.     |
| TOTAL GROSS FLOOR AREA   | ±39,546 S.F.   | ±3,674 S.M.   |
| TOTAL BUILDING AREA      | ±42,291 S.F.   | ±3,929 S.M.   |
| TOTAL PARKING PROVIDED   | 181 CARS       |               |
|                          | 4.58/1000 S.F. | 4.93/100 S.M. |
| COVERAGE                 | 21.28 %        |               |

### LEGEND

-  PROPOSED BUILDING
-  PROPOSED ENTRANCE ARROW
-  PROPOSED CONCRETE SIDEWALK
-  PROPOSED FIRE & TRUCK ROUTE (HEAVY DUTY ASPHALT)
-  PROPOSED PCX PARKING
-  PROPOSED EV PARKING
-  PROPOSED TRANSFORMER

|   |            |                         |     |
|---|------------|-------------------------|-----|
| # | DATE       | DESCRIPTION             | BY  |
| 5 | 2023-05-01 | ISSUED FOR COORDINATION | FPI |
| 4 | 2023-04-24 | ISSUED FOR COORDINATION | FPI |
| 3 | 2023-03-30 | ISSUED FOR COORDINATION | FPI |
| 2 | 2023-03-28 | ISSUED FOR COORDINATION | FPI |
| 1 | 2023-03-02 | ISSUED FOR COORDINATION | FPI |

## Loblaw Companies Limited

PROJECT  
**CAMBRIAN RD (S. PARCEL)**

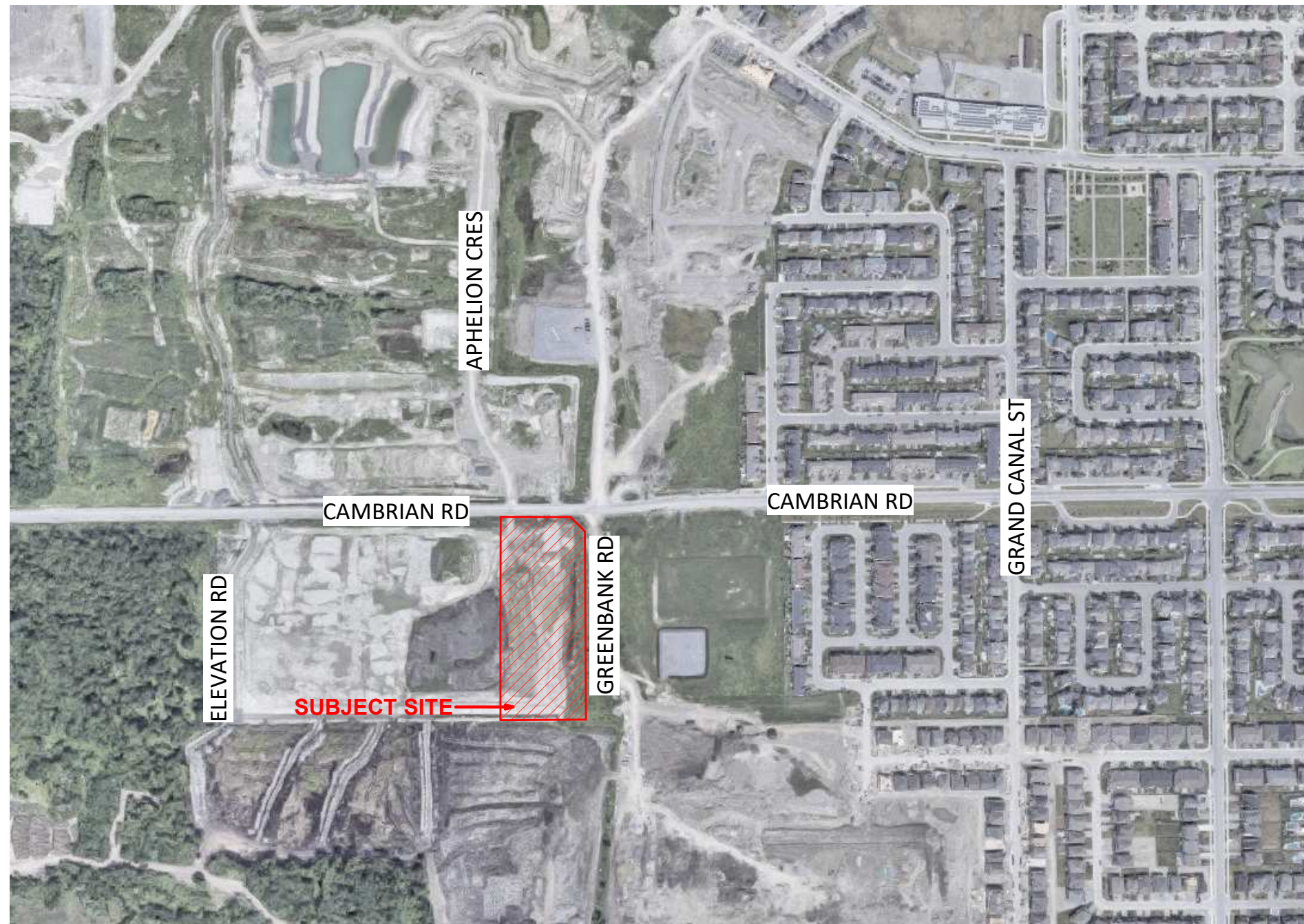
BARRHAVEN, ONTARIO

DRAWING  
**SITE PLAN & FLOOR PLAN**

PROJECT NO.  
21.326SD  
PROJECT DATE  
2023-05-01  
DRAWN BY  
FPI  
CHECKED BY  
RAD

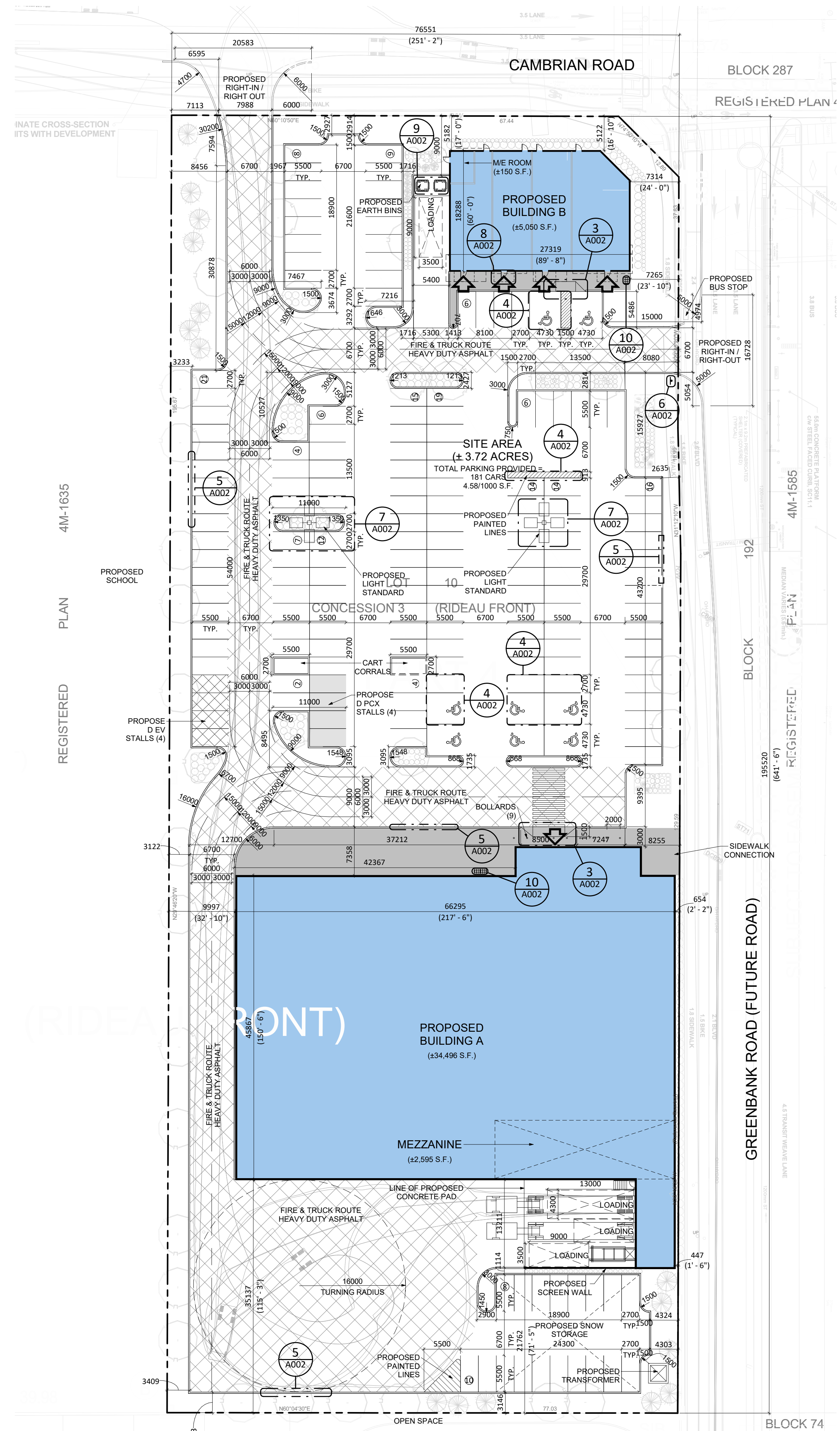
SCALE  
1:400

DRAWING NO.  
**A001**



2 CONTEXT PLAN  
A001 N.T.S.

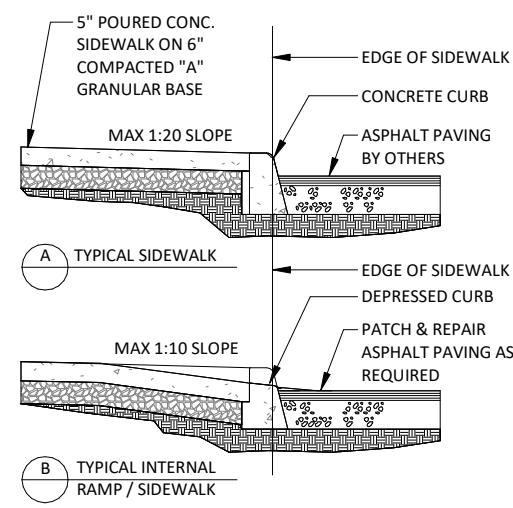
| ZONING COMPLIANCE CHART - ZONING: GM[1628]                  |  |  |
|---|--|--|
|   | REQUIRED   | PROPOSED                               |
| Minimum Lot Width (m)                                       | N/A  | 76.55 m                                |
| Minimum Lot Area (acres)                                    | N/A  | 3.72 acres                             |
| Minimum Front Yard Setback (Cambrian Rd) (m)                | 3 m  | 5.12 m                                 |
| Minimum Rear Yard Setback (m)                               | N/A  | 21.76 m                                |
| Minimum Interior Side Yard Setback (m)                      | 5m on West lot line<br>0m on East lot line (future Greenbank Rd)   | 9.99 m West<br>0.45 m East             |
| Maximum Height (m)  | 24 m / 6 storeys   | 7.48 m / 1 storey                      |
| Minimum Parking Dimensions (m)                              | 2.6m x 5.2m  | 2.7m x 5.5m                            |
| Minimum Parking required (3.6 per 100 s.m. of GFA)          | 141 spaces   | 181 spaces                             |
| Minimum Bicycle Parking required (1 per 250 s.m. of GFA)    | 15 spaces  | 15 spaces                              |
| Loading spaces (for up to 4999 s.m. of GFA)                 | 1 standard space (3.5x9x4.2 m)<br>1 oversized space (4.3x13x4.2 m) | 3 standard spaces<br>1 oversized space |
| Minimum Drive Aisle Width (parking angle at 90 degrees) (m) | 6.7 m  | 6.7 m                                  |



1 SITE PLAN  
A001 1:400



This drawing, as an instrument of service, is provided by and is the property of Turner Fleischer Architects Inc. The contractor must verify and accept responsibility for all dimensions and conditions on site and must notify Turner Fleischer Architects Inc. of any variations from the supplied information. This drawing is not to be scaled. The architect is not responsible for the accuracy of survey, structural, mechanical, electrical, etc. information shown on this drawing. Refer to the appropriate consultant's drawings before proceeding with the work. Contractor must conform to all applicable codes and requirements of authority having jurisdiction. The contractor working from drawings not specifically marked "For Construction" must assume full responsibility and bear costs for any corrections or damages resulting from the work.

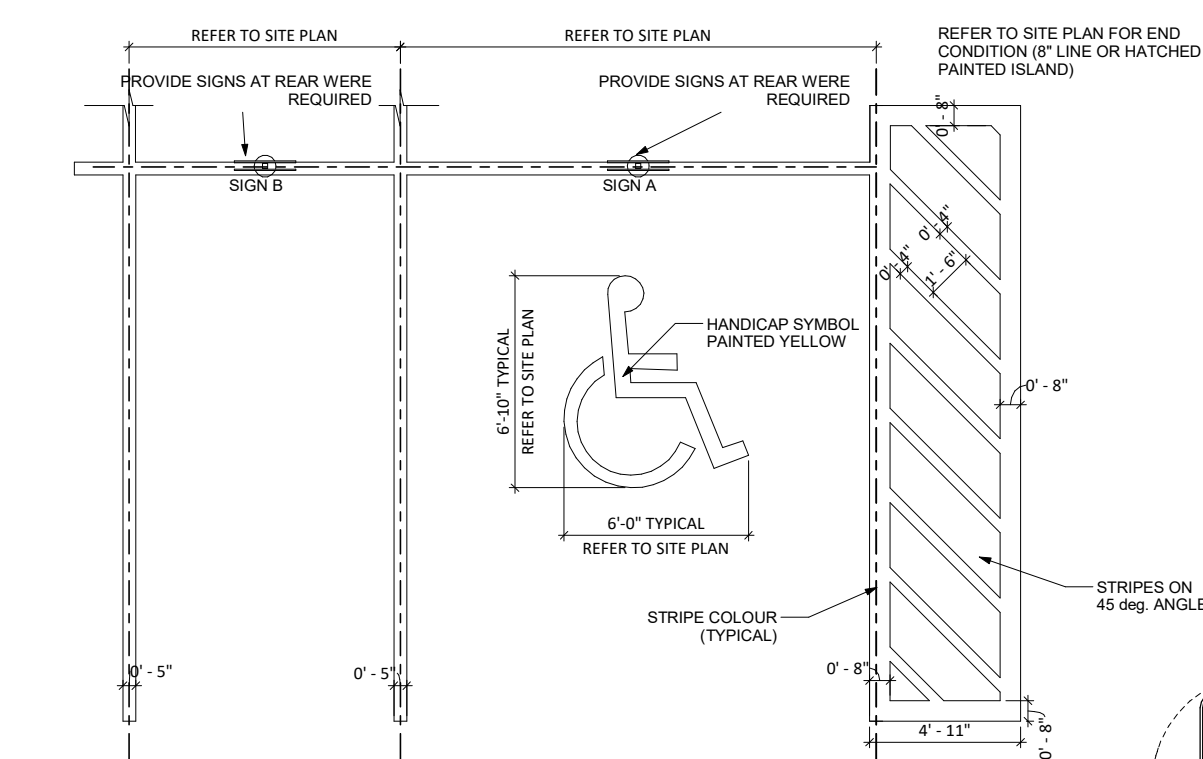
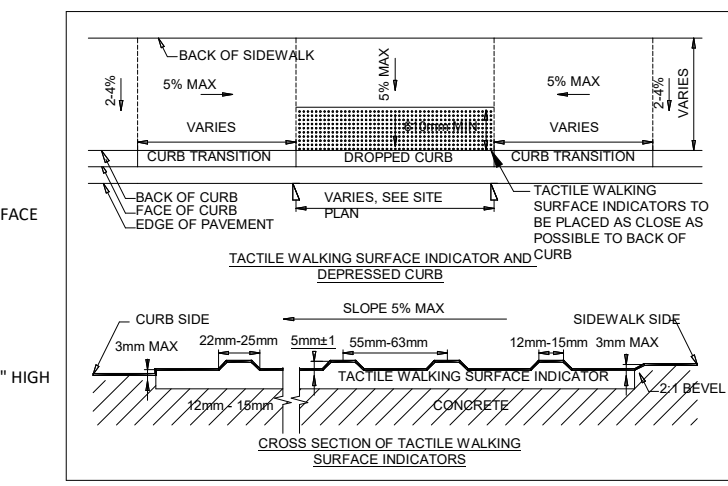
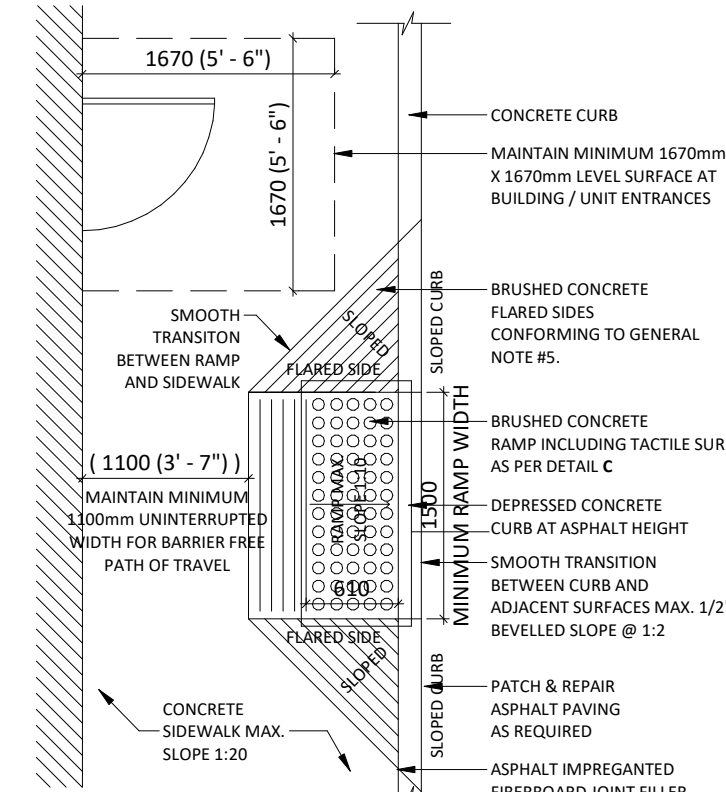


### GENERAL NOTES:

- G1. SIDEWALK SLOPES TO BE 1/8" / FT. (1%)
- G2. MAX. IN ALL DIRECTIONS ALONG STOREFRONT, 1/4" / FT. (2%) MAX. IN OTHER AREAS.
- G3. EXPANSION JOINTS ARE TO BE AS SPECIFIED & AS LOCATED ON ARCHITECTURAL DOCUMENTS.
- G4. REINFORCING TO BE AS PER STRUCTURAL DOCUMENTS.
- G5. CONCRETE TO BE BROOM FINISHED AS PER ARCHITECTURAL SPECIFICATIONS.
- G6. CONSTRUCTION OF CURB RAMPS TO BE IN ACCORDANCE WITH THE REQUIREMENTS IN PROVINCE OF ONTARIO - DESIGN OF PUBLIC SPACES STANDARD PART IV.3 OF ONTARIO REGULATION 191/13. IT MUST HAVE TACTILE WALKING SURFACE INDICATORS THAT:
  - i) HAVE BASED TACTILE PROFILES.
  - ii) HAVE A HIGH TONAL CONTRAST WITH THE ADJACENT SURFACE.
  - iii) ARE LOCATED AT THE BOTTOM OF THE CURB RAMP.
  - iv) ARE SET BACK BETWEEN 150mm AND 200mm FROM THE CURB EDGE.
  - v) EXTEND THE FULL WIDTH OF THE CURB RAMP, AND
  - vi) ARE A MINIMUM OF 610mm IN DEPTH.

### NOTES:

1. WHERE SIDEWALK IS CONTINUOUSLY ADJACENT, REDUCE THE DROPPED CURB AT ENTRANCES TO 3".
2. FOR SURFING PROCEDURE A 5% BATTER IS ACCEPTABLE.
- A. TREATMENT AT ENTRANCES SHALL CONFORM WITH OPSD 353.01
- B. OUTLET TREATMENT SHALL CONFORM WITH OPSD 410 SERIES
- C. THE LENGTH OF TRANSITION FROM ONE CURB TYPE TO ANOTHER SHALL BE 3.0M, EXCEPT IN CONJUNCTION WITH GUIDE RAIL, IT SHALL CONFORM TO OPSD 300 SERIES



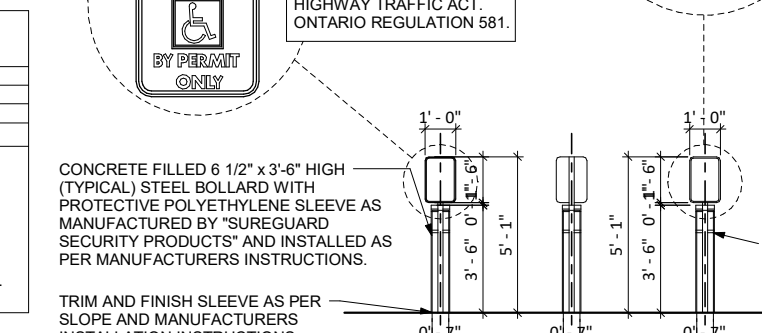
- NOTES:
1. PARKING BAY DIMENSIONS REFLECT I.P.L. STANDARDS. REFER TO SITE PLAN DRAWINGS FOR SPECIFIC PROJECT SITE PLANNING DIMENSIONS
  2. ALL PARKING LOT LINE STRIPING TO BE PAINTED WITH YELLOW AND CONFORM TO CANCSG-14 COLOUR SAMPLE TO BE APPROVED BY I.P.L.
  3. ALL PARKING DIMENSIONS SHOWN ARE MINIMUM. CONFIRM REQUIRED SIZES WITH LOCAL AUTHORITY HAVING JURISDICTION.

**SUREGUARD SLEEVE COLOUR LEGEND:**

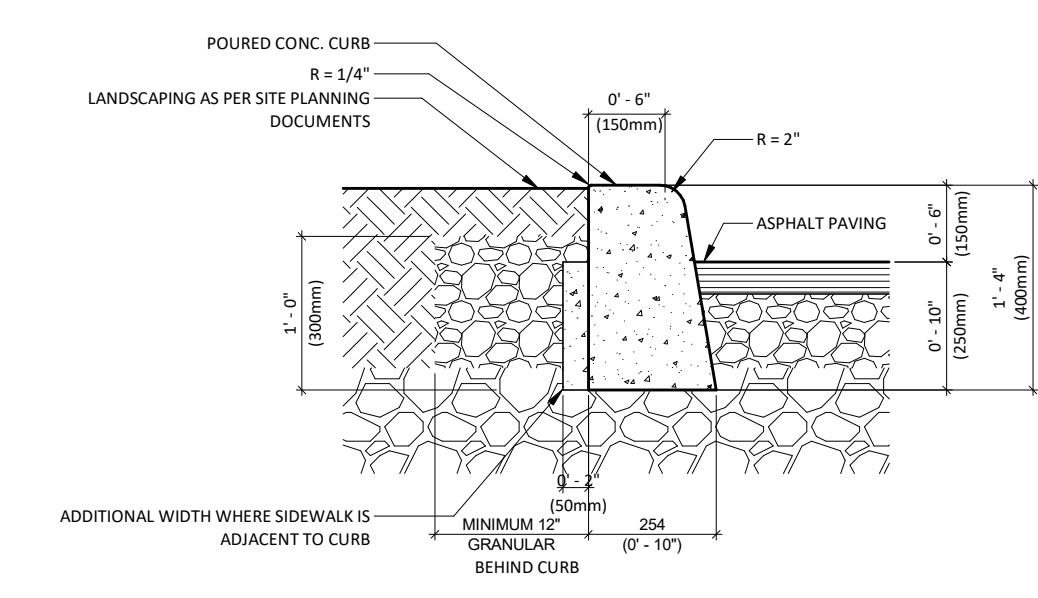
| MODEL     | COLOUR | TAPE COLOUR |
|-----------|--------|-------------|
| INSPIRE   | YELLOW | WHITE       |
| SUPERCORE | YELLOW | WHITE       |
| NORFILL   | YELLOW | WHITE       |
| NEIGHBOUR | YELLOW | WHITE       |

FOR NORFILLS:  
OMIT SUREGUARD SHIELD. PROVIDE 6 1/2" O.C. STEEL BOLLARD C/W CONCRETE & PAINTED SAFETY YELLOW

FOR FORTINGS:  
OMIT SURE GUARD SHIELD - PROVIDE 6 1/2" O.C. GLAZENAVZ STEEL BOLLARD C/W CONCRETE

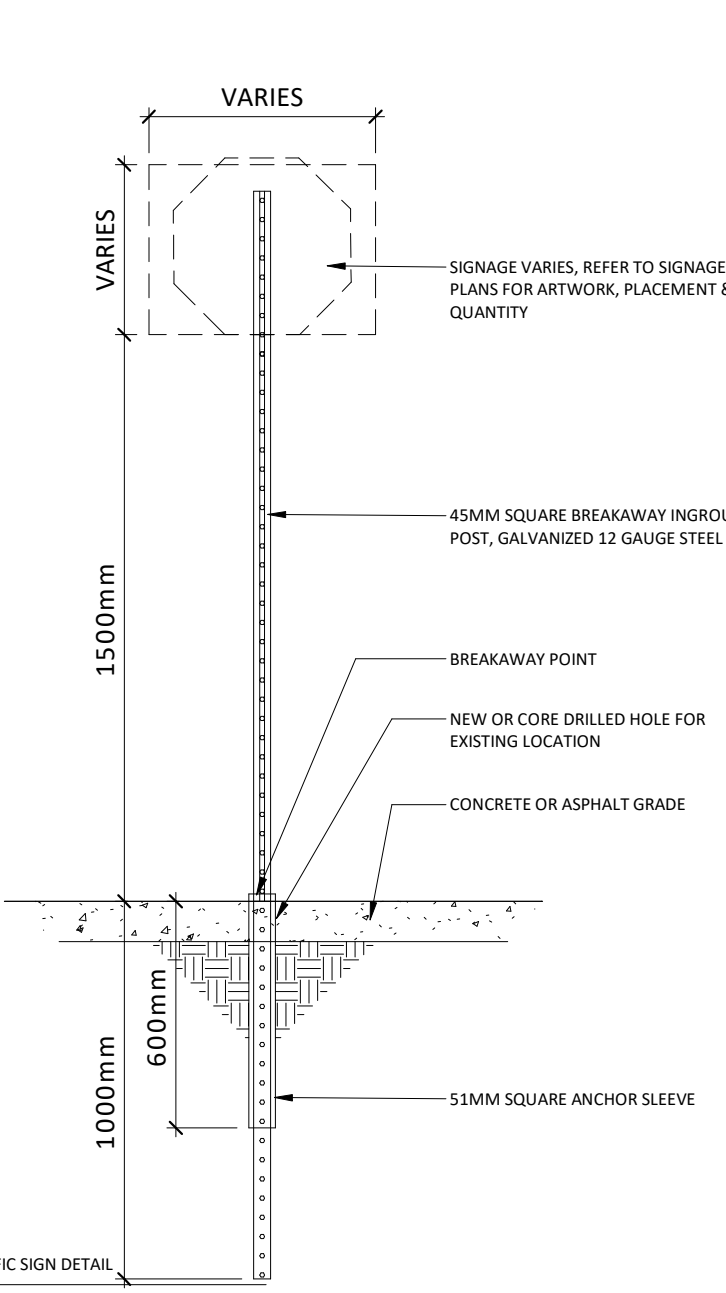


**PAINTED PARKING LINES, STRIPES AND SIGNAGE**  
DETAIL DRAWN BY TURNER FLEISCHER ARCHITECTS INC. ON BEHALF OF LOBLAW COMPANIES LIMITED  
C-209 SCALE 1/4" = 1'-0"

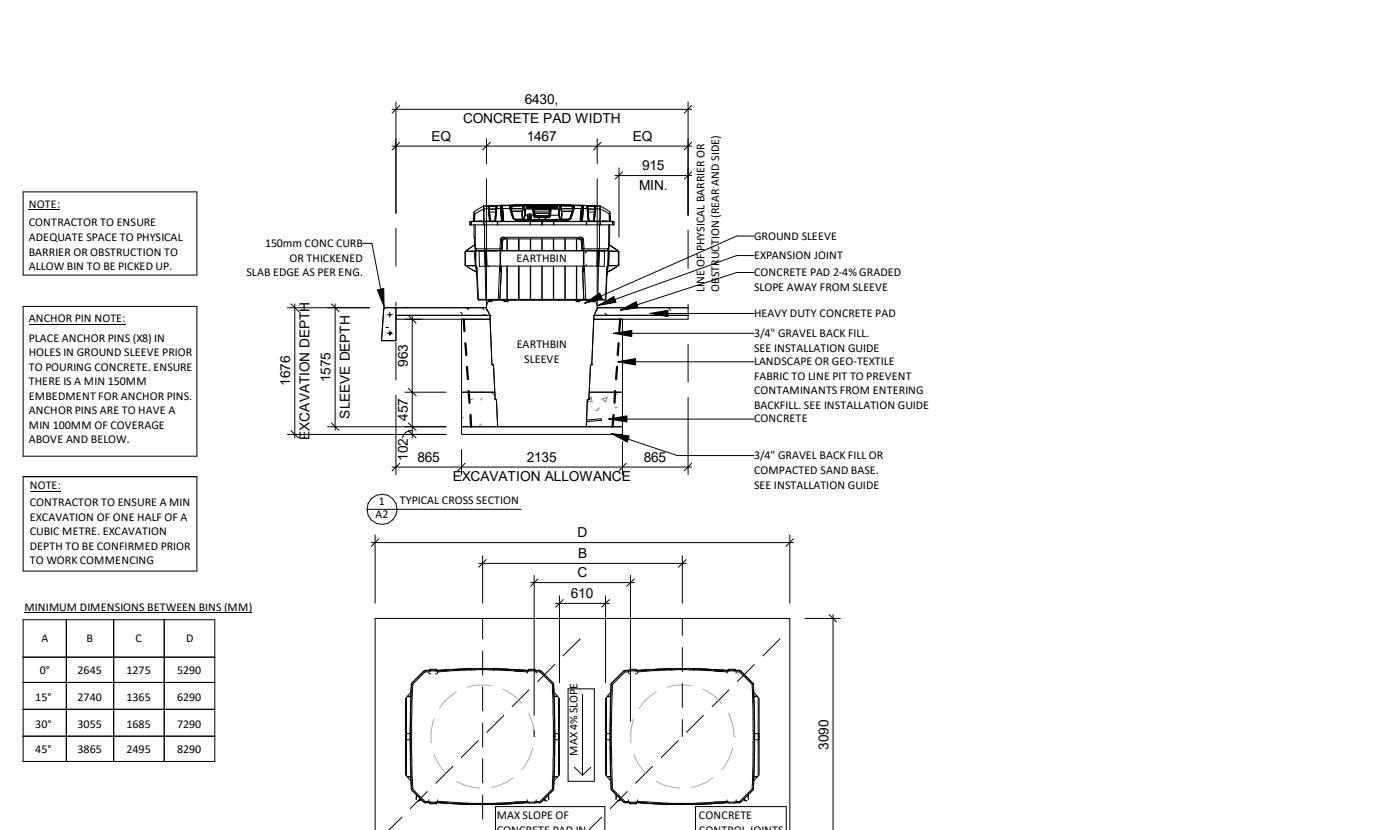
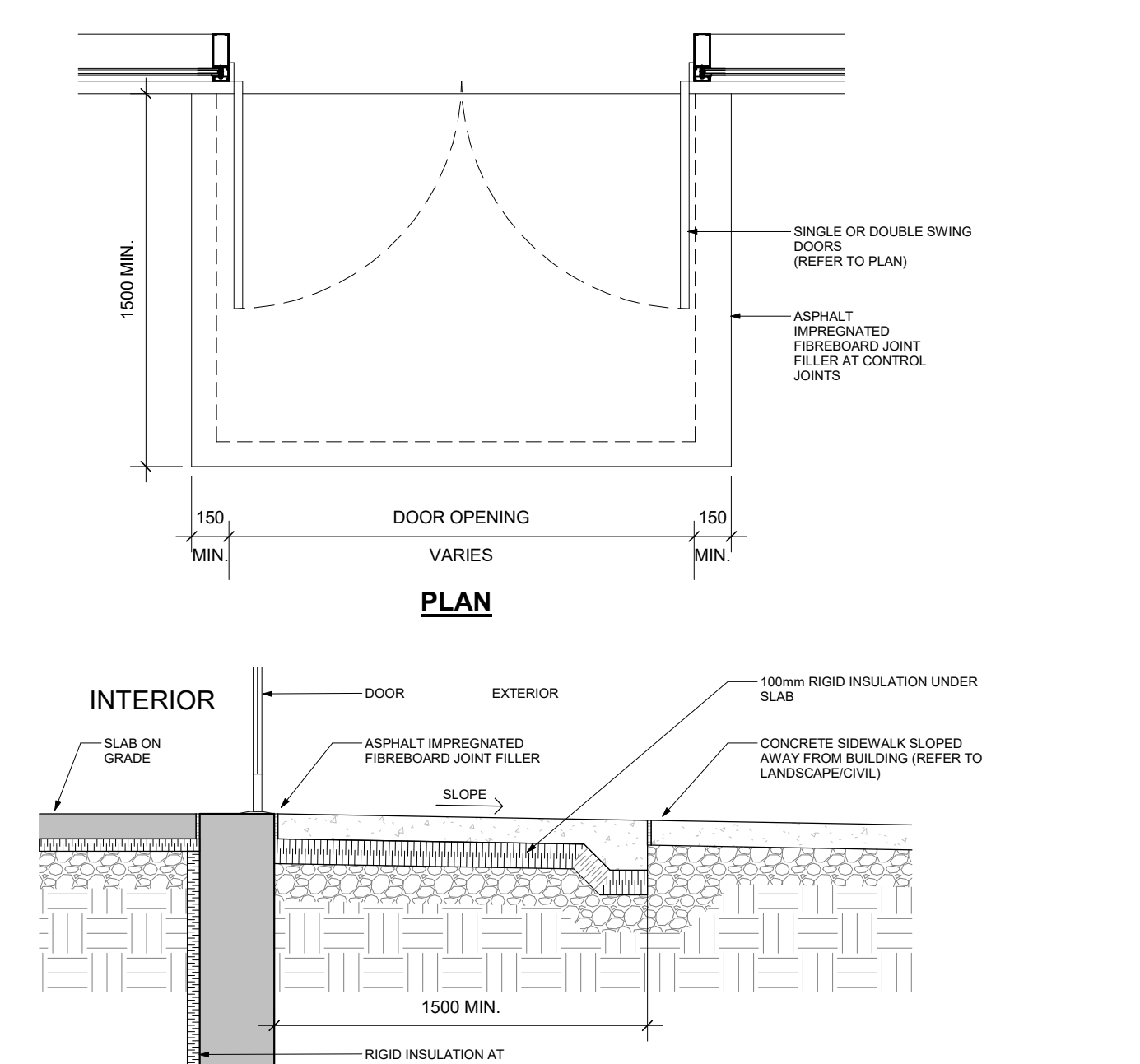
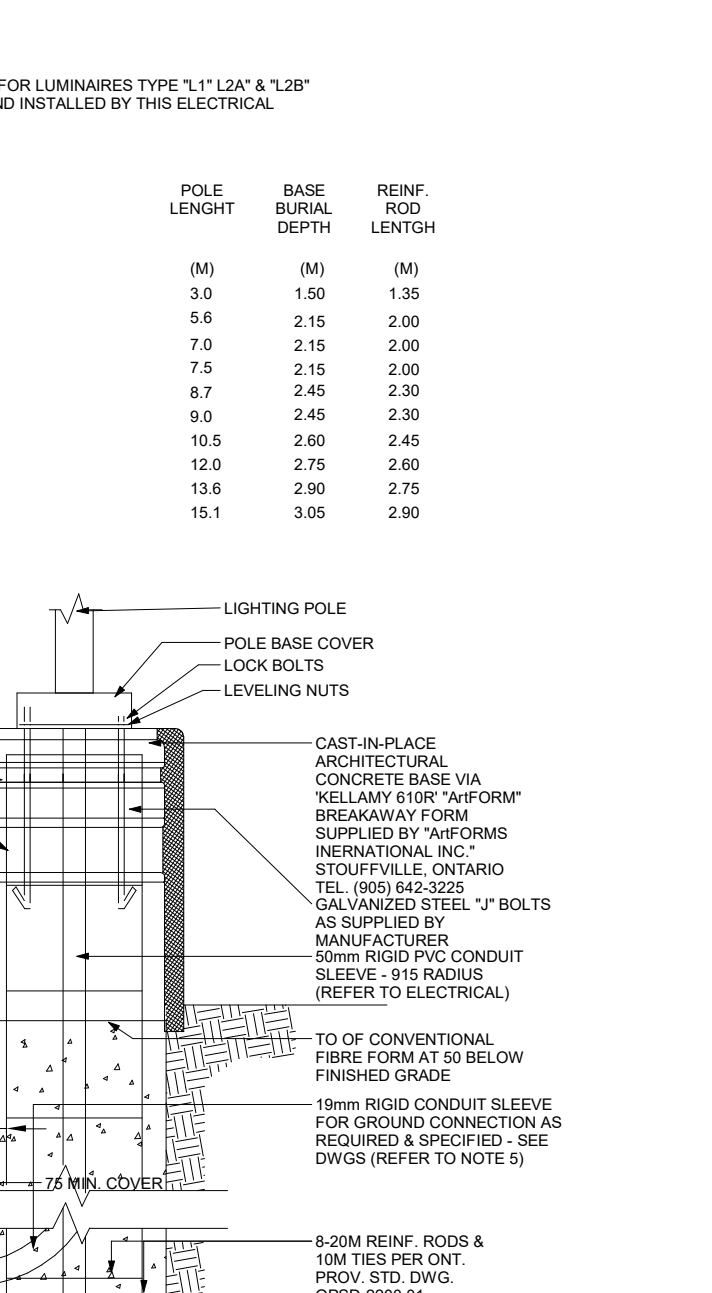


- NOTES:
1. THESE CURBS APPLY TO THE PARKING AREA FOR CURBS AND SLABS.
  2. TREATMENT AT ENTRANCES SHALL CONFORM WITH LOCAL JURISDICTION HAVING AUTHORITY.
  3. OUTLET TREATMENT SHALL CONFORM WITH LOCAL JURISDICTION HAVING AUTHORITY.
  4. THE LENGTH OF TRANSITION FROM ONE CURB TYPE TO ANOTHER SHALL BE 3.0M, EXCEPT IN CONJUNCTION WITH GUIDE RAIL, IT SHALL CONFORM WITH LOCAL JURISDICTION HAVING AUTHORITY.

**TYPICAL POURED CONCRETE CURB**  
DETAIL DRAWN BY TURNER FLEISCHER ARCHITECTS INC. ON BEHALF OF LOBLAW COMPANIES LIMITED  
C-211 SCALE 1" = 1'-0"



- NOTE:  
CONCRETE BASES FOR LUMINAIRE TYPE "L1" "L2A" & "L2B" TO BE SUPPLIED AND INSTALLED BY THIS ELECTRICAL CONTRACTOR.
- NOTES:
1. ALL DIMENSIONS ARE IN MILLIMETERS OR METERS
  2. TOP OF FOUNDATION SHALL BE TROWELED SMOOTH & LEVEL
  3. CLASS OF CONCRETE SHALL BE 25MPa. CONCRETE SHALL BE VIBRATED. A MINIMUM OF TWO SLICES REQUIRED FOR EACH CONC. FOUNDATION UNLESS OTHERWISE SHOWN.
  4. PROVIDE A 19mm DIA. 3000mm STEEL COPPER COATED GROUND ROD ADJACENT TO POLE AS SPECIFIED ON PLAN AND CONNECT TO METAL POLE WITH BARE COPPER CONDUCTOR.
  5. CONTRACTOR TO VERIFY OPENING SIZE IN POLE BASE PLATE PRIOR TO SETTING CONDUIT SLEEVES.
  6. CONTRACTOR TO PROVIDE STRUCTURAL ENGINEER APPROVAL FOR BASE DESIGN.
  7. SUBJECT TO SOIL CONDITIONS, REFER TO SOIL REPORT.
  8. FORM RELEASE AGENT HAS BEEN FACTORY APPLIED TO INSIDE SURFACE OF "A" FORM.

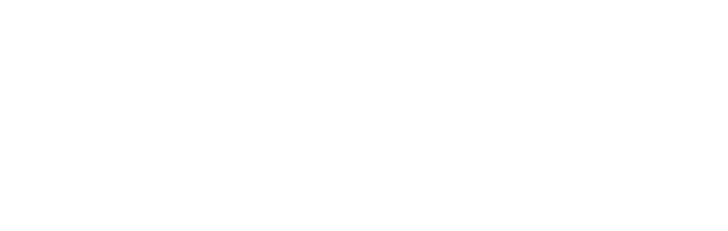
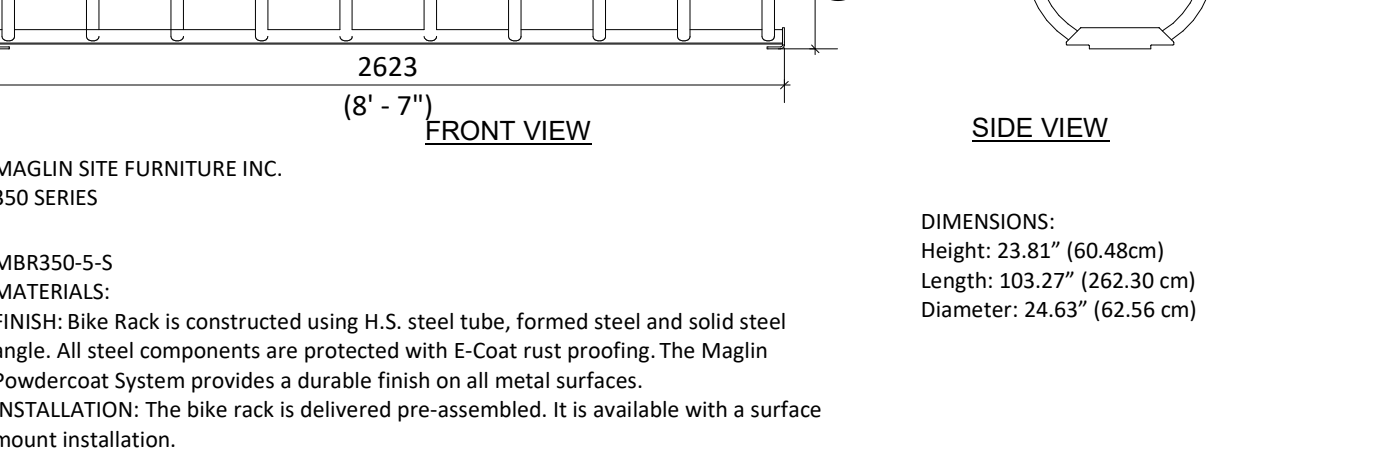
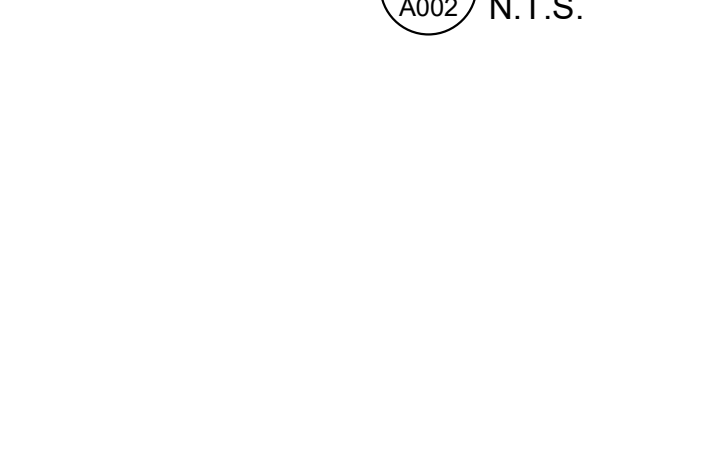
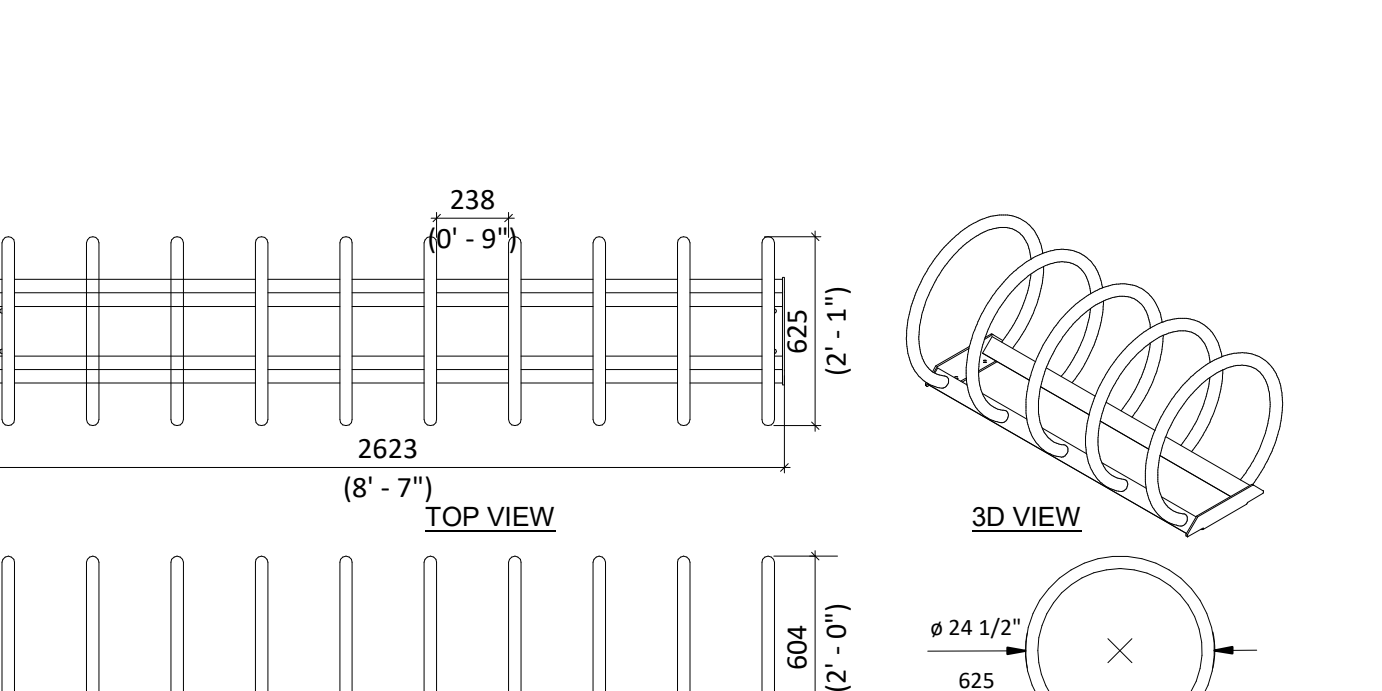
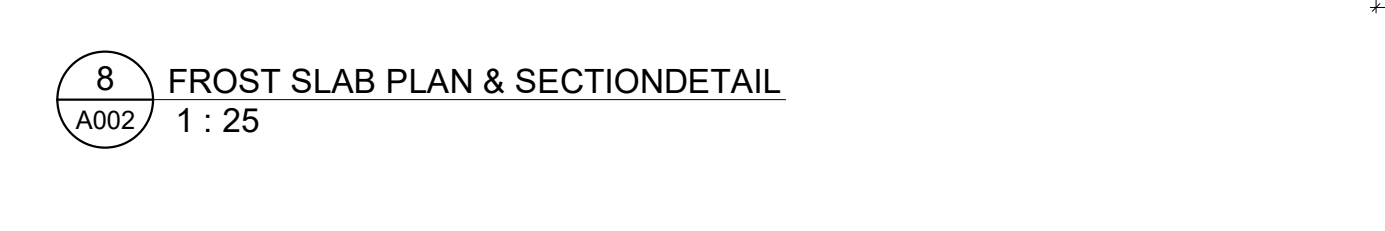
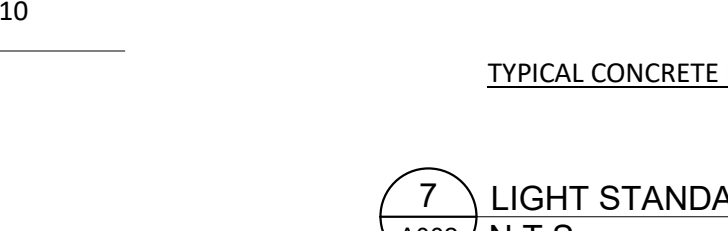
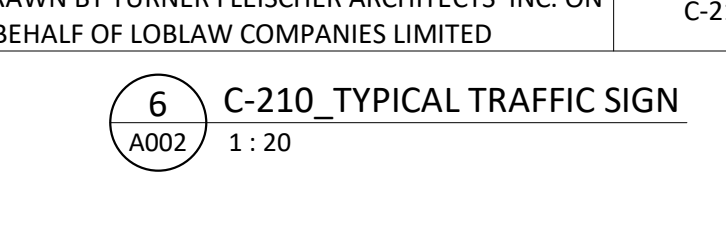


**TYPICAL TRAFFIC SIGN**  
DETAIL DRAWN BY TURNER FLEISCHER ARCHITECTS INC. ON BEHALF OF LOBLAW COMPANIES LIMITED  
C-210 SCALE 3/4" = 1'-0"

**TYPICAL CONCRETE BASE FOR LUMINAIRE**  
DETAIL DRAWN BY TURNER FLEISCHER ARCHITECTS INC. ON BEHALF OF LOBLAW COMPANIES LIMITED  
C-210

**FROST SLAB PLAN & SECTION DETAIL**  
DETAIL DRAWN BY TURNER FLEISCHER ARCHITECTS INC. ON BEHALF OF LOBLAW COMPANIES LIMITED  
C-209

**EARTH BIN DETAIL**  
DETAIL DRAWN BY TURNER FLEISCHER ARCHITECTS INC. ON BEHALF OF LOBLAW COMPANIES LIMITED  
C-211



**TYPICAL TRAFFIC SIGN**  
DETAIL DRAWN BY TURNER FLEISCHER ARCHITECTS INC. ON BEHALF OF LOBLAW COMPANIES LIMITED  
C-210

**TYPICAL CONCRETE BASE FOR LUMINAIRE**  
DETAIL DRAWN BY TURNER FLEISCHER ARCHITECTS INC. ON BEHALF OF LOBLAW COMPANIES LIMITED  
C-210

**FROST SLAB PLAN & SECTION DETAIL**  
DETAIL DRAWN BY TURNER FLEISCHER ARCHITECTS INC. ON BEHALF OF LOBLAW COMPANIES LIMITED  
C-209

**EARTH BIN DETAIL**  
DETAIL DRAWN BY TURNER FLEISCHER ARCHITECTS INC. ON BEHALF OF LOBLAW COMPANIES LIMITED  
C-211

| # | DATE       | DESCRIPTION             | BY  |
|---|------------|-------------------------|-----|
| 5 | 2023-05-01 | ISSUED FOR COORDINATION | FPI |
| 4 | 2023-04-24 | ISSUED FOR COORDINATION | FPI |
| 3 | 2023-03-30 | ISSUED FOR COORDINATION | FPI |
| 2 | 2023-03-28 | ISSUED FOR COORDINATION | FPI |
| 1 | 2023-03-02 | ISSUED FOR COORDINATION | FPI |

## Loblaw Companies Limited

PROJECT  
**CAMBRIAN RD (S. PARCEL)**  
BARRHAVEN, ONTARIO

DRAWING  
**SITE DETAILS**

PROJECT NO.  
21.326SD  
PROJECT DATE  
2023-05-01  
DRAWN BY  
FPI  
CHECKED BY  
RAD  
SCALE  
As indicated

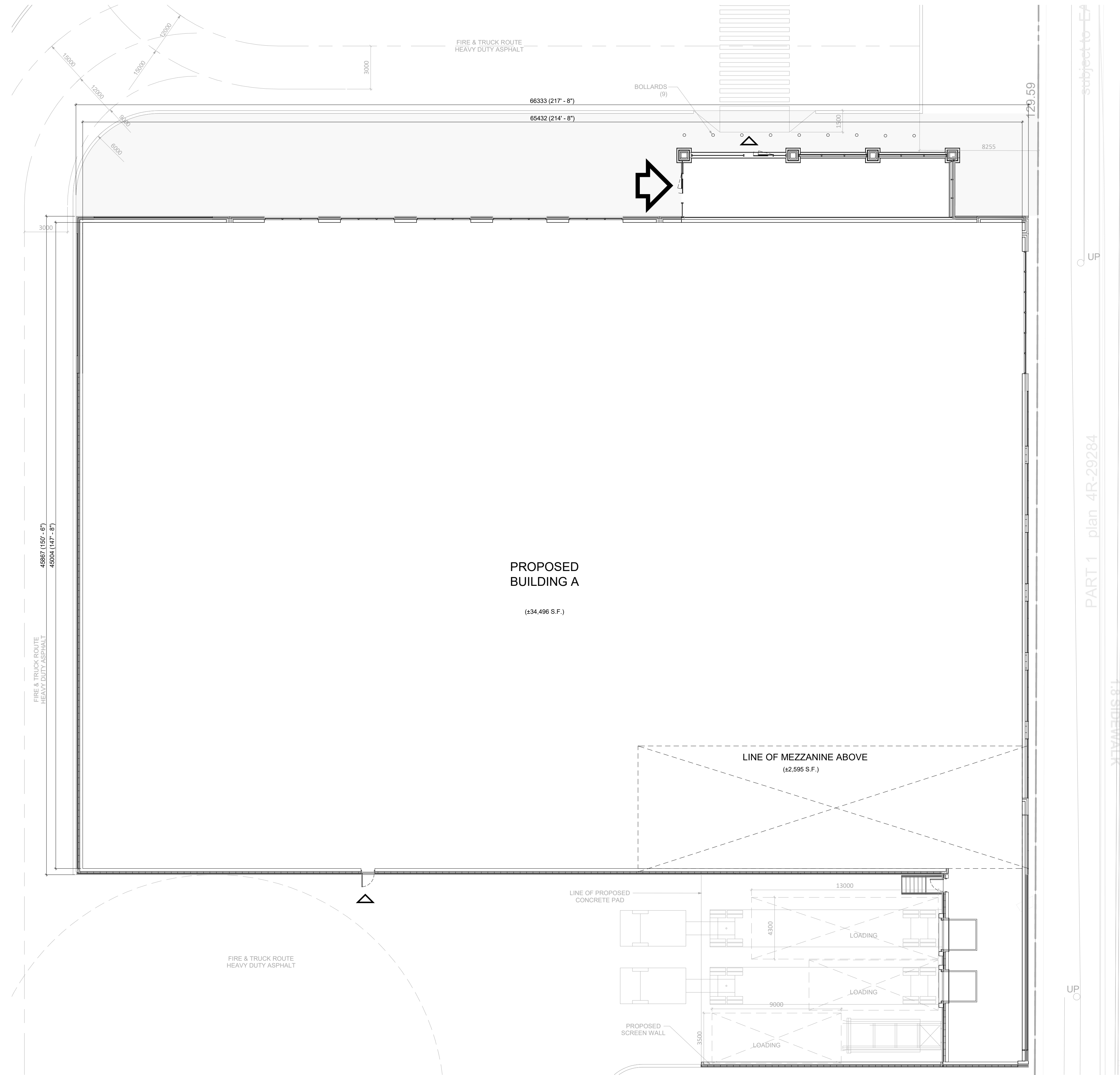
DRAWING NO.  
**A002**



**BICYCLE RACK DETAIL - 12 SPACES**  
DETAIL DRAWN BY TURNER FLEISCHER ARCHITECTS INC. ON BEHALF OF LOBLAW COMPANIES LIMITED  
C-211



This drawing, as an instrument of service, is provided by and is the property of Turner Fleischer Architects Inc. The contractor must verify and accept responsibility for all dimensions and conditions on site and must notify Turner Fleischer Architects Inc. of any variations from the supplied information. This drawing is not to be used for any other project without the written consent of Turner Fleischer Architects Inc. Information shown on this drawing is for the contractor's use only and is not to be used for any other purpose. The contractor must comply with all applicable codes and requirements of authority having jurisdiction. The contractor working from drawings not specifically marked for construction must assume full responsibility and bear costs for any corrections or damages resulting from his work.



subject to E/P

PART 1 plan 4R-29284

1.8 SIDEWALK

UP

UP

| # | DATE       | ISSUED FOR COORDINATION | DESCRIPTION | FPI | BY |
|---|------------|-------------------------|-------------|-----|----|
| 4 | 2023-05-01 |                         |             |     |    |

**Loblaw Companies Limited**

PROJECT  
**CAMBRIAN RD (S. PARCEL)**  
BARRHAVEN, ON

DRAWING  
**BUILDING A - FLOOR PLAN**

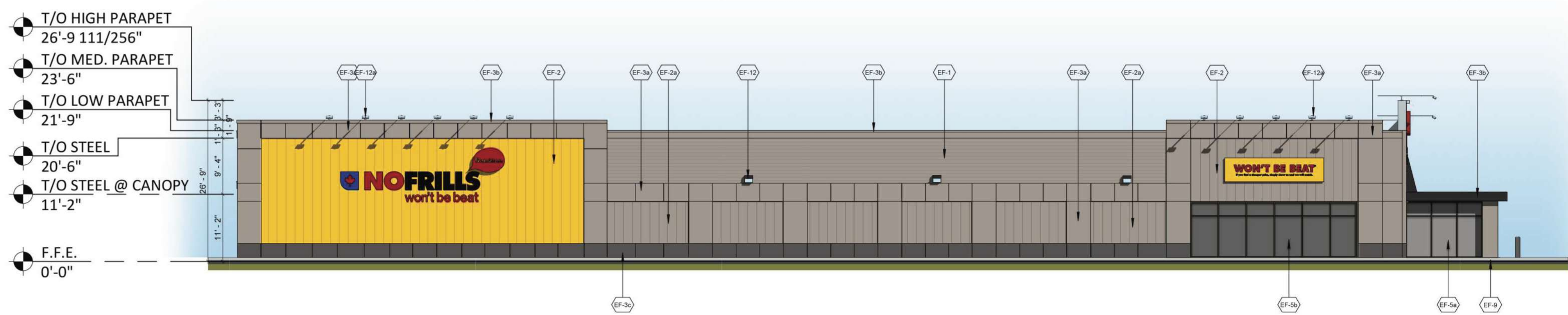
PROJECT NO.  
21.326SD  
PROJECT DATE  
2023-05-01  
DRAWN BY  
FPI  
CHECKED BY  
RAD  
SCALE  
1 : 150

DRAWING NO.  
**A101**

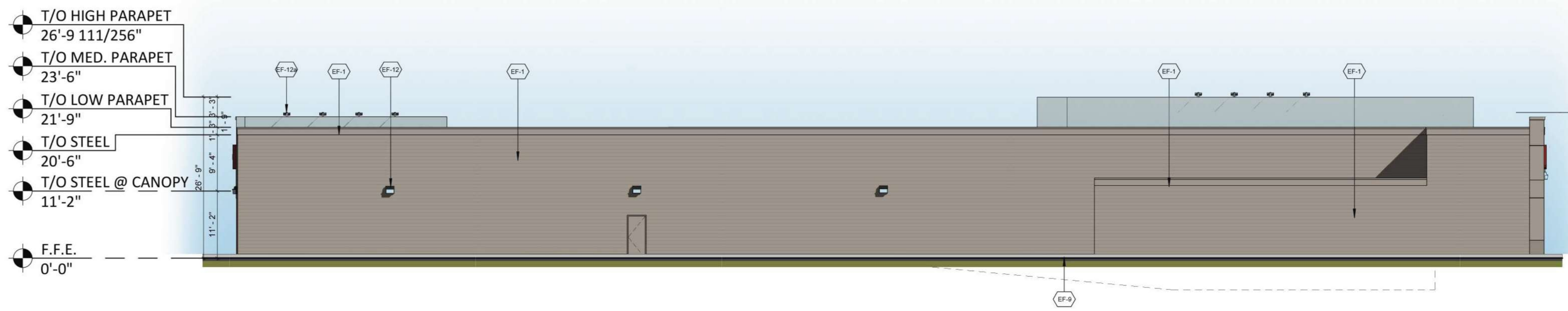




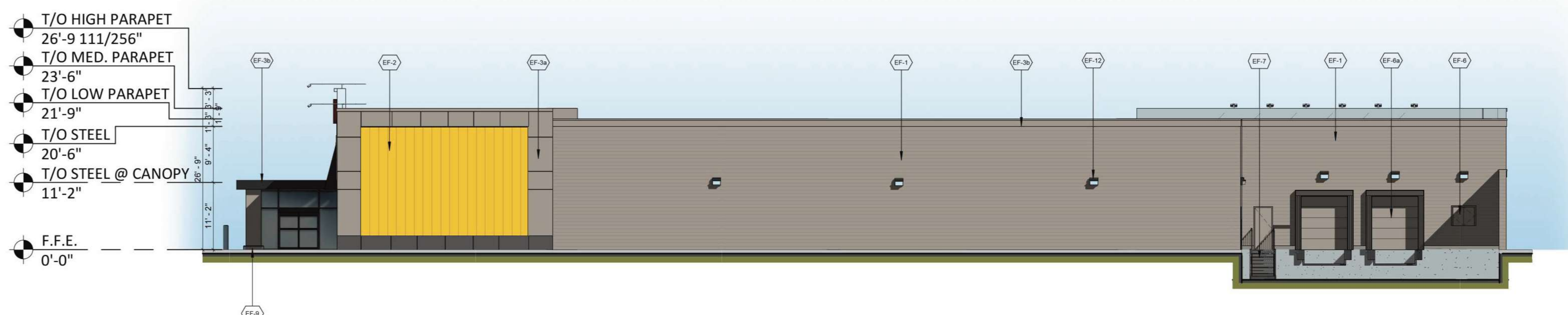
3 NORTH  
A301 1:150



2 EAST  
A301 1:150



4 SOUTH  
A301 1:150



5 WEST  
A301 1:150

| EXTERIOR FINISH SCHEDULE |  |
|--------------------------|--|
| EF-1                     | <b>HORIZONTAL METAL SIDING:</b><br>- PREPAINTED GALVANIZED SHEET STEEL SIDING<br>- VOWEST 24ga. CL602SSR<br>- COLOUR: DURANAR SEAWOLF<br>- CAP FLASHING CORNICE<br>- PAINT STONE GREY  |
| EF-2                     | <b>VERTICAL METAL SIDING</b><br>- PREPAINTED GALVANIZED SHEET STEEL SIDING<br>- VOWEST 24ga. CL602SSR<br>- COLOUR TO MATCH NO FRILLS YELLOW - ARM995 - SWOOSH YELLOW   |
| EF-2a                    | <b>VERTICAL METAL SIDING</b><br>- PREPAINTED GALVANIZED SHEET STEEL SIDING<br>- VOWEST 24ga. CL602SSR<br>- COLOUR: STONE GREY  |
| EF-3a                    | <b>CONTINUOUS CORNICE &amp; HIGH PARAPET CORNICE CAP FLASHING</b><br>- PREFINISHED METAL PANEL 1/8" THICK ALUMINUM<br>- BENT TO PROFILE AS INDICATED WITH BUTT JOINT BETWEEN PANELS<br>- PANELS TO BE FIXED TO HORIZONTAL METAL SIDING REFER TO DETAIL 3/A8.1<br>- PPG DURANAR FINISH UC109855<br>- COLOUR: STONE GREY<br>- CAP FLASHING:<br>- 24 GAUGE PREPAINTED GALVANIZED STEEL SHEET BRAKE<br>- FORMED AS REQUIRED TO SUIT PROFILE AS INDICATED ON DRAWINGS<br>- COLOUR: STONE GREY |
| EF-3b                    | <b>CART STORAGE FASCIA</b><br>- PPG DURANAR FINISH UC40577/ 5MB86928<br>- COLOUR: BLACK- CLASSIC   |
| EF-4                     | <b>VINYL CANOPY</b><br>- BLACK PREFINISHED 1/8" DIABOND ON 1"x1" ALUMINUM TUBING FRAME<br>- WITH BLACK POLYURETHANE PAINT FINISH WITH FASTENINGS AND CONNECTION PLATES   |
| EF-5                     | <b>STOREFRONT GLAZING &amp; FRAMES</b><br>- 6mm INSULATED GLAZING IN BLACK ANODIZED (KAWNEER FINISH NO. 29), THERMALLY BROKEN ALUMINUM FRAMES<br>- ALUMINUM FRAMES: ARCHITECTURAL CLASS I (7 mils MINIMUM), ALUMINUM ASSOCIATION SPECIFICATION: AA-M10C22A44<br>- PROVIDE SOLARBAN 60 ON CLEAR GLASS. PROVIDE TEMPERED GLAZING ON LOWER PANELS   |
| EF-5a                    | <b>CART STORAGE GLAZING &amp; FRAMES</b><br>- 6mm GLAZING IN BLACK ANODIZED (KAWNEER FINISH NO. 29) ALUMINUM FRAMES<br>- ALUMINUM FRAMES: ARCHITECTURAL CLASS I (7 mils MINIMUM), ALUMINUM ASSOCIATION SPECIFICATION: AA-M10C22A44<br>- PROVIDE TEMPERED GLAZING ON LOWER PANELS   |
| EF-5b                    | <b>SPANDREL PANEL &amp; FRAMES</b><br>- INKAY CUSTOM OPAQICOAT FINISH OPAQI-COAT-300 # 3-967 (BLACK GREY) ON INTERIOR FACE OF PANE WITH 22 GAUGE GALVANIZED METAL AND INSULATION BACKPAN<br>- BLACK ANODIZED (KAWNEER FINISH NO. 29), THERMALLY BROKEN ALUMINUM FRAMES<br>- ALUMINUM FRAMES: ARCHITECTURAL CLASS I (7 mils MINIMUM), ALUMINUM ASSOCIATION SPECIFICATION: AA-M10C22A44  |
| EF-6                     | <b>MISCELLANEOUS DOORS &amp; OPENINGS</b><br>- PAINT BLACK (P14-SICO 922-180)  |
| EF-6a                    | <b>OVERHEAD DOORS</b><br>- PREFINISHED STANDARD WHITE  |
| EF-6b                    | <b>GLAZED ALUMINUM DOOR</b><br>- 6mm GLAZING IN BLACK ANODIZED (KAWNEER FINISH NO. 29), ALUMINUM FRAMES (TO MATCH GLAZING SYSTEM)<br>- ALUMINUM FRAMES: ARCHITECTURAL CLASS I (7 mils MINIMUM), ALUMINUM ASSOCIATION SPECIFICATION: AA-M10C22A44   |
| EF-7                     | <b>EXTERIOR STAIRS, HANDRAILS, PICKETS &amp; STRINGER</b><br>- PAINT BLACK (P14-SICO 922-180)  |
| EF-8                     | <b>BUILDING PROTECTION BOLLARD</b><br>- STEEL PIPE BOLLARD FILLED WITH CONCRETE<br>- PAINTED SAFETY YELLOW<br>- REFER TO DETAIL C-05 AND C-06  |
| EF-9                     | <b>CONCRETE FOUNDATION CURB</b>  |

| # | DATE       | DESCRIPTION             | BY  |
|---|------------|-------------------------|-----|
| 4 | 2023-05-01 | ISSUED FOR COORDINATION | FPI |
| 3 | 2023-04-24 | ISSUED FOR COORDINATION | FPI |
| 2 | 2023-02-24 | ISSUED FOR COORDINATION | FPI |
| 1 | 2023-01-24 | ISSUED FOR COORDINATION | FPI |

**Loblaw Companies Limited**

PROJECT  
**CAMBRIAN RD (S. PARCEL)**

BARRHAVEN, ON

DRAWING  
**BUILDING A ELEVATIONS**

PROJECT NO.  
21.326SD  
PROJECT DATE  
2023-05-01  
DRAWN BY  
FPI  
CHECKED BY  
RCH  
SCALE  
As indicated

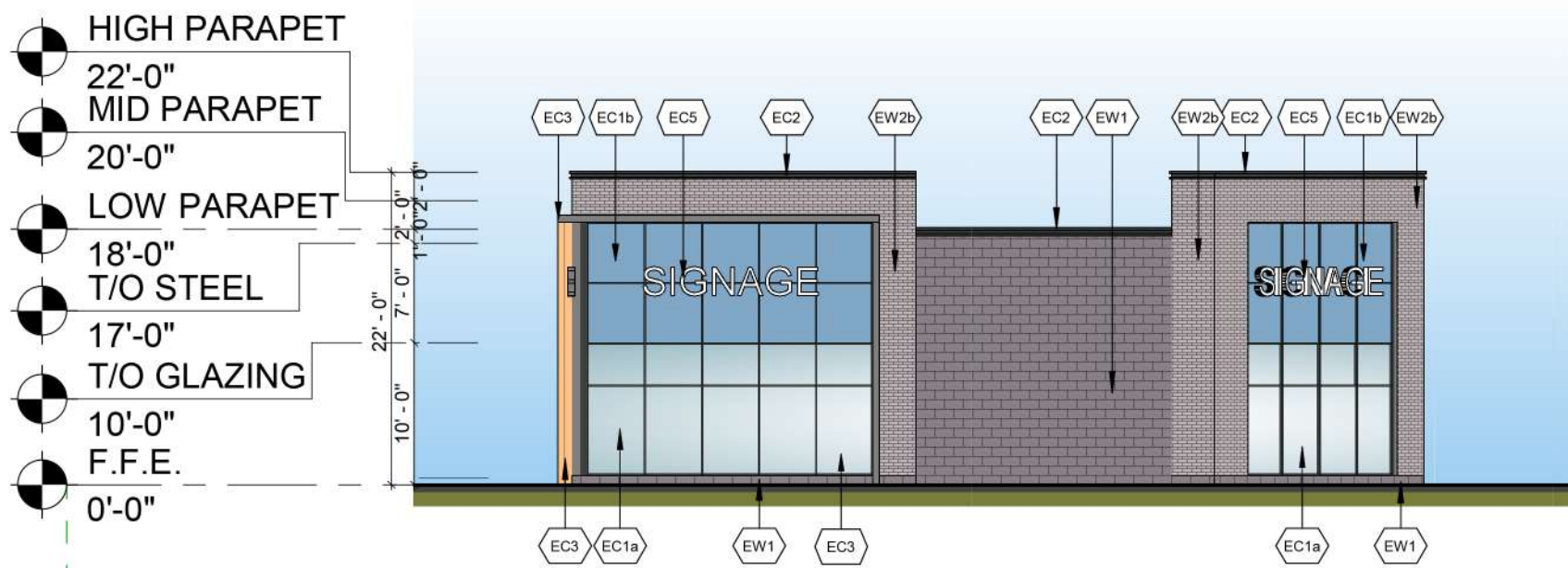
DRAWING NO.  
**A301**



This drawing, as an instrument of service, is provided by and is the property of Turner Fleischer Architects Inc. The contractor must verify and accept responsibility for all dimensions and conditions on site and must notify Turner Fleischer Architects Inc. of any variations from the supplied information. This drawing is not to be used for any other project without the written consent of Turner Fleischer Architects Inc. Information shown on this drawing refers to the appropriate consultant's drawings before proceeding with the work. Construction must conform to all applicable codes and requirements of authority having jurisdiction. The contractor working from drawings not specifically marked 'For Construction' must assume full responsibility and bear costs for any corrections or damages resulting from his work.



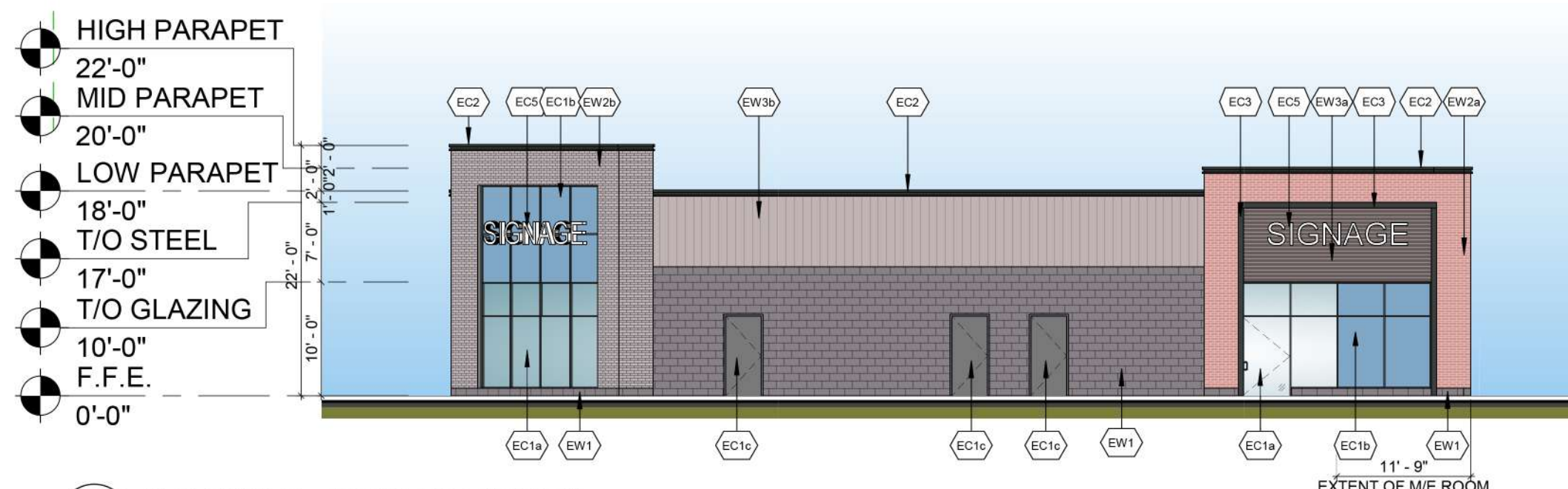
1 BUILDING B - SOUTH ELEVATION  
A302 1 : 150



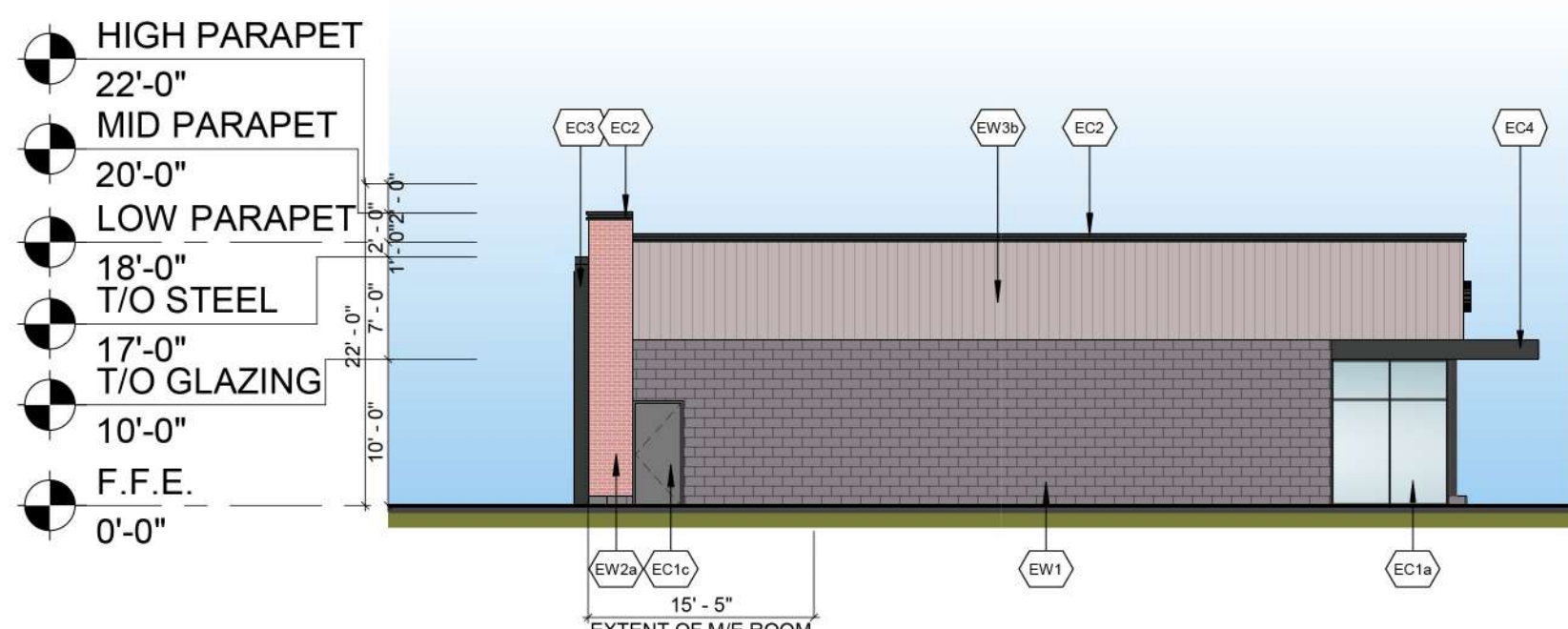
4 BUILDING B - EAST ELEVATION  
A302 1 : 150



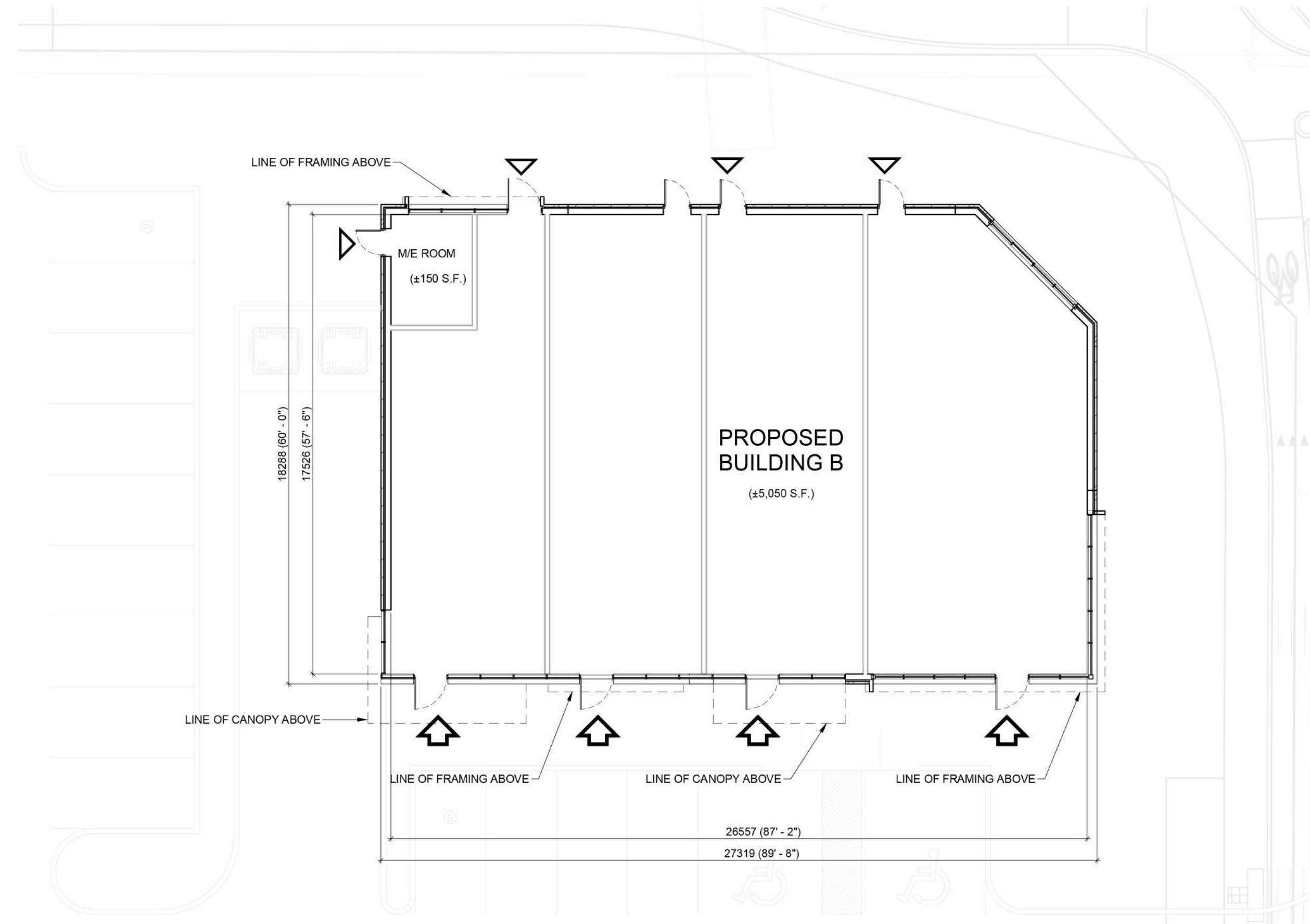
7 BUILDING B - NORTH-EAST ELEVATION  
A302 1 : 150



2 BUILDING B - NORTH ELEVATION  
A302 1 : 150



3 BUILDING B - WEST ELEVATION  
A302 1 : 150



5 BUILDING B - FLOOR PLAN  
A302 1 : 150

### EXTERIOR FINISH SCHEDULE

|      |   |      |  |
|------|---|------|--|
| EW1  | <b>ARCHITECTURAL BLOCK:</b><br>PRODUCT: CONCRETE MASONRY<br>COLOUR: DARK GREY<br>MORTAR: DARK GREY<br>SEE MANUFACTURER'S STANDARD SPECIFICATIONS CONTROL JOINT AND CAULKING COLOURS TO MATCH MASONRY UNIT COLOUR. | EC1a | <b>GLAZED DOORS &amp; WINDOWS:</b><br>CURTAIN WALL & STOREFRONT FRAMING SYSTEM<br>COLOUR: BLACK ANODIZED<br>THERMALLY BROKEN ALUMINUM FRAMES<br>GLAZING: CLEAR INSULATED VISION GLASS c/w LOW-E GLAZING                                    |
| EW2a | <b>BRICKS:</b><br>PRODUCT: BRICK MASONRY<br>COLOUR: BROWN<br>MORTAR: WHITE<br>SEE MANUFACTURER'S STANDARD SPECIFICATIONS CONTROL JOINT AND CAULKING COLOURS TO MATCH MASONRY UNIT COLOUR.                         | EC1b | <b>SPANDREL GLAZED DOORS &amp; WINDOWS:</b><br>BLACK ANODIZED ALUMINUM FRAMES<br>CLEAR GLASS UNIT WITH CUSTOM COLOUR COATING ON INBOARD SURFACE OF OUTERLITE (TEMPERED GLASS TO BE USED AT DOORS AND SIDELIGHTS)<br>COLOUR: BLACK ANODIZED |
| EW2b | <b>BRICKS:</b><br>PRODUCT: BRICK MASONRY<br>COLOUR: LIGHT GREY<br>MORTAR: LIGHT GREY<br>SEE MANUFACTURER'S STANDARD SPECIFICATIONS CONTROL JOINT AND CAULKING COLOURS TO MATCH MASONRY UNIT COLOUR.               | EC1c | <b>H.M. DOORS &amp; FRAMES:</b><br>PREFINISHED HOLLOW METAL DOORS AND FRAMES PAINT DARK GREY   |
| EW3a | <b>METAL SIDING - HORIZONTAL:</b><br>PRODUCT: METAL PANELS<br>PROFILE: CORRUGATED<br>COLOUR: CHARCOAL   | EC2  | <b>PREFINISHED METAL CAP FLASHING:</b><br>PRE-FINISHED 20 GA. METAL FLASHING<br>COLOUR: BLACK<br>REFER TO DETAILS FOR PROFILE  |
| EW3b | <b>METAL SIDING - VERTICAL:</b><br>PRODUCT: METAL PANELS<br>PROFILE: CORRUGATED<br>COLOUR: LIGHT GREY   | EC3  | <b>ACM PORTAL:</b><br>PRODUCT: ALPOLIC COMPOSITE METAL PANEL<br>COLOUR: CHARCOAL<br>SOFFIT: METAL COMPOSITE WOOD FINISH.<br>COLOUR: MPL MAPLE  |
|      |   | EC4  | <b>ACM CANOPY:</b><br>PRODUCT: ALPOLIC COMPOSITE METAL PANEL<br>COLOUR: CHARCOAL   |
|      |   | EC5  | <b>EXTERIOR SIGNAGE:</b><br>SIGNAGE TO BE PROVIDED BY AND INSTALLED BY TENANT  |

| 3 | 2023-05-21 | ISSUED FOR COORDINATION | FPI |
|---|------------|-------------------------|-----|
| 2 | 2023-04-19 | ISSUED FOR COORDINATION | FPI |
| 1 | 2023-02-23 | ISSUED FOR COORDINATION | FPI |
| # | DATE       | DESCRIPTION             | BY  |

**Loblaw Companies Limited**

PROJECT  
**CAMBRIAN RD (S. PARCEL)**

BARRHAVEN, ONTARIO

DRAWING  
**BUILDING B ELEVATIONS**

PROJECT NO.  
21.326SD  
PROJECT DATE  
2023-05-01  
DRAWN BY  
FPI  
CHECKED BY  
RAD  
SCALE  
As indicated

DRAWING NO.  
**A302**