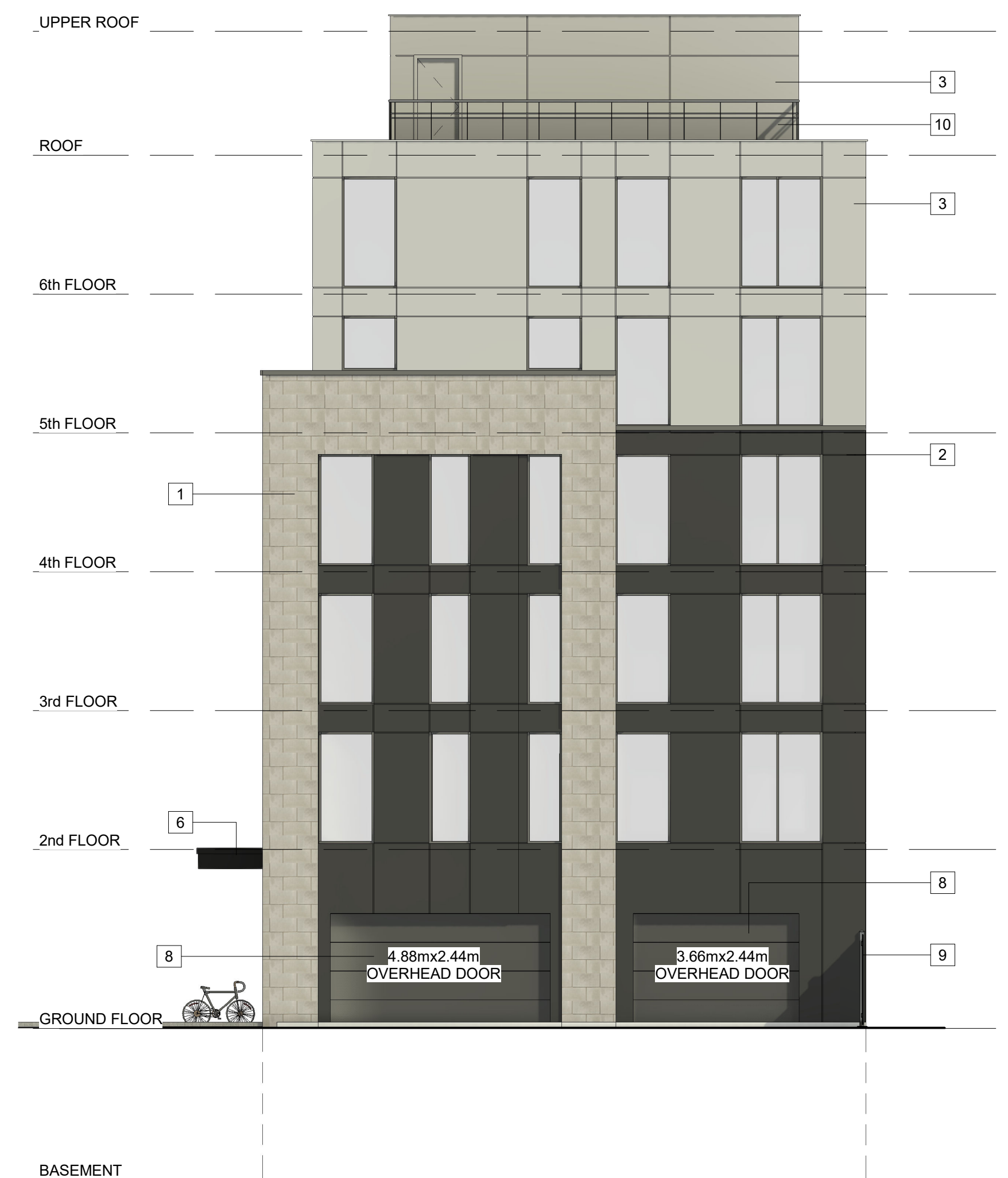


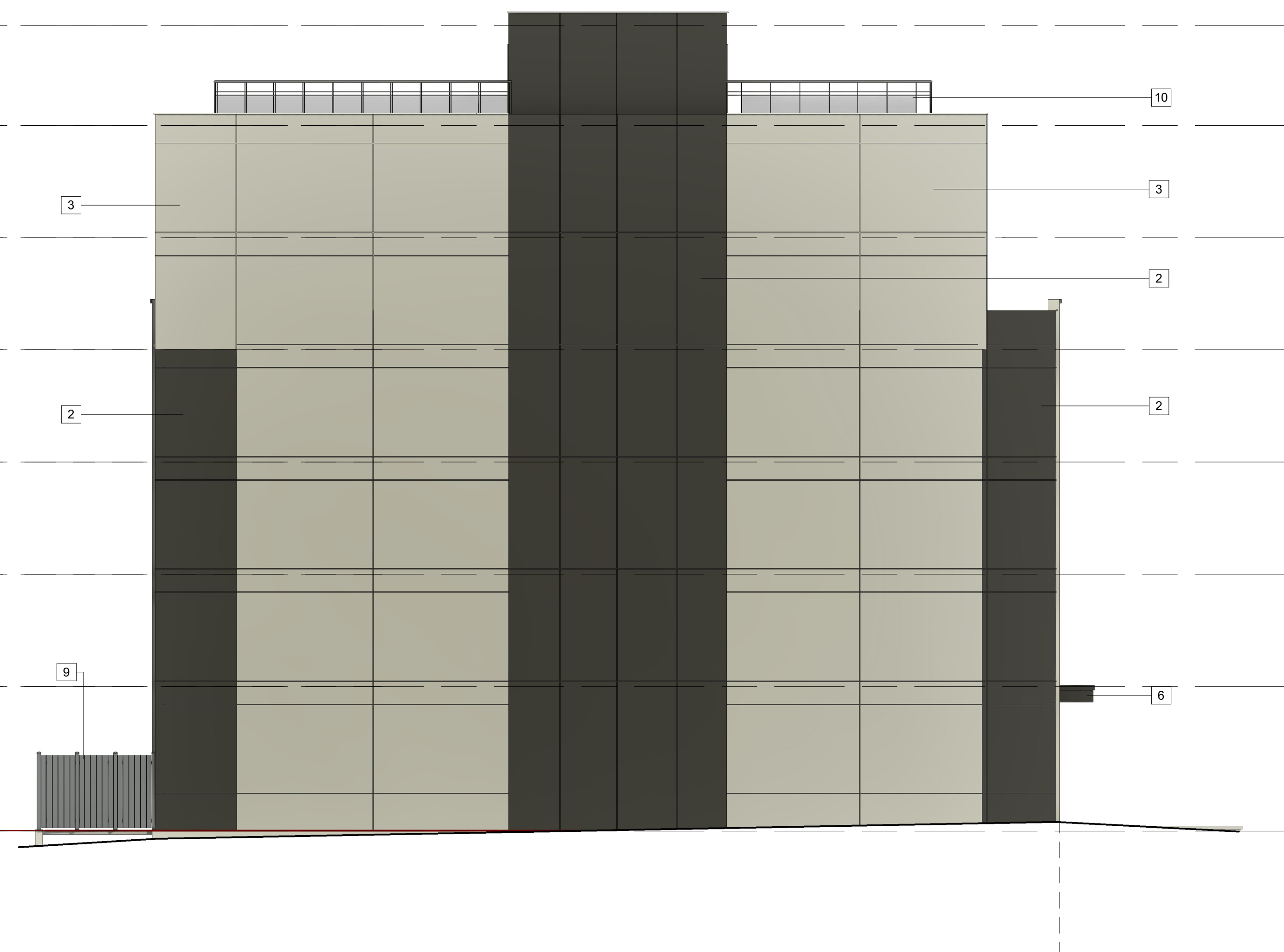


1 East (Front) Elevation  
1:100

2 North (Corner) Elevation  
1:100



3 West (Rear) Elevation  
1:100



4 South (Side) Elevation  
1:100

- MATERIAL LEGEND & NOTES**
- 1 STONE VENEER
  - 2 METAL PANEL, DARK GREY
  - 3 METAL PANEL, LIGHT GREY
  - 4 PRECAST CORNICE
  - 5 PRECAST PARAPET CAP
  - 6 CANOPY
  - 7 BIRD-SAFE GLASS
  - 8 OVERHEAD DOOR
  - 9 OPAQUE FENCE
  - 10 OPAQUE GLASS RAILING

- COLOUR SAMPLE PALETTE**
- 1 STONE VENEER
  - 2 METAL PANEL, DARK GREY
  - 3 METAL PANEL, LIGHT GREY

*Andrew McCreight*  
**ANDREW MCCREIGHT**  
 MANAGER, DEVELOPMENT REVIEW CENTRAL  
 PLANNING, DEVELOPMENT & BUILDING SERVICES  
 DEVELOPMENT DEPARTMENT, CITY OF OTTAWA

**APPROVED**  
 By Andrew McCreight at 1:55 pm, Aug 14, 2024

**RA** REDLINE ARCHITECTURE  
 REDLINE ARCHITECTURE INC.  
 Tel: 613-612-2232  
 info@redlinearchitecture.ca  
 www.redlinearchitecture.ca

**RESPONSIBILITIES:**  
 DO NOT SCALE DRAWINGS  
 ALL DESIGN AND CONSTRUCTION TO BE IN ACCORDANCE WITH THE ONTARIO BUILDING CODE 2012  
 ALL CONTRACTORS MUST WORK IN ACCORDANCE WITH ALL LAWS, REGULATIONS AND BYLAWS HAVING JURISDICTION  
 IT IS THE RESPONSIBILITY OF THE APPROPRIATE CONTRACTOR TO CHECK AND VERIFY ALL DIMENSIONS ON SITE AND REPORT ALL ERRORS AND OMISSIONS TO THE ARCHITECT/DRAWER  
 COPYRIGHT RESERVED



**224 PRESTON ST.**  
 NEW 6 STOREY  
 MIXED-USE

**OWNER/DEVELOPER:**  
 224 ON PRESTON INC.  
**ARCHITECT:**  
 REDLINE ARCHITECTURE INC.  
**APPLICANT:**  
**CIVIL ENGINEER:**  
 EXP. 1551 BAXTER ROAD  
 OTTAWA, ON  
 K2C-3P1  
**LANDSCAPING:**  
 DENDRON FORESTRY SERVICES  
 OTTAWA, ON  
 K1S 5B2  
**SURVEYOR:**  
 ADRI L.D.  
 14 CONCOURSE GATE, SUITE 500  
 OTTAWA, ON  
 K2E-7S6  
**CONSULTANTS:**  
 STRUCTURAL - TBD  
 MECHANICAL - TBD  
 ELECTRICAL - TBD

NO.	REVISION/ISSUE	DATE	MDY
9			
8			
7			
6			
5			
4			
3			
2	ISSUED FOR REVISION	11/15/23	
1	ISSUED FOR SPA & ZA	01/23/23	

**ELEVATIONS**  
 DRAWN BY: SHEET:  
 DATE: MARCH 28, 2022  
 SCALE: AS NOTED **A4**  
 # 18968

D07-12-23-0060